

KD-Validated Anti-Keratin 4 Recombinant Rabbit Monoclonal Antibody



Catalog #: 62132

Aliases

KRT4; Keratin 4; CYK4; K4; Keratin, Type II Cytoskeletal 4; CK4; Type-II Keratin Kb4; Cytokeratin 4; CK-4; Keratin 4, Type II; Cytokeratin-4; Keratin-4; WSN1

Background

Gene Name: KRT4

NCBI Gene Entry: [3851](#)

UniProt Entry: [P19013](#)

Application Information

Molecular Weight: Predicted, 56 kDa, observed, 57 kDa

Clonality: Rabbit monoclonal antibody

Clone ID: 23GB6150

Species Reactivity: Human, mouse, rat

Applications Tested: Western blotting (WB), flow cytometry (FCM), immunocytochemistry (IC)

Immunogen

A synthesized peptide derived from human Cytokeratin 4

Isotype

Rabbit IgG

Storage Buffer

Supplied in PBS (pH 7.4) containing 50% glycerol, and 0.02% sodium azide.

Storage

Store at -20 °C for one year.

Recommended Dilutions

Western Blotting (WB): 1:1,000-1:5,000

Flow Cytometry (FCM): 1:2,000

Immunocytochemistry (IC): 1:100-1:1,000

Note: This product is for research use only.

Validation Data

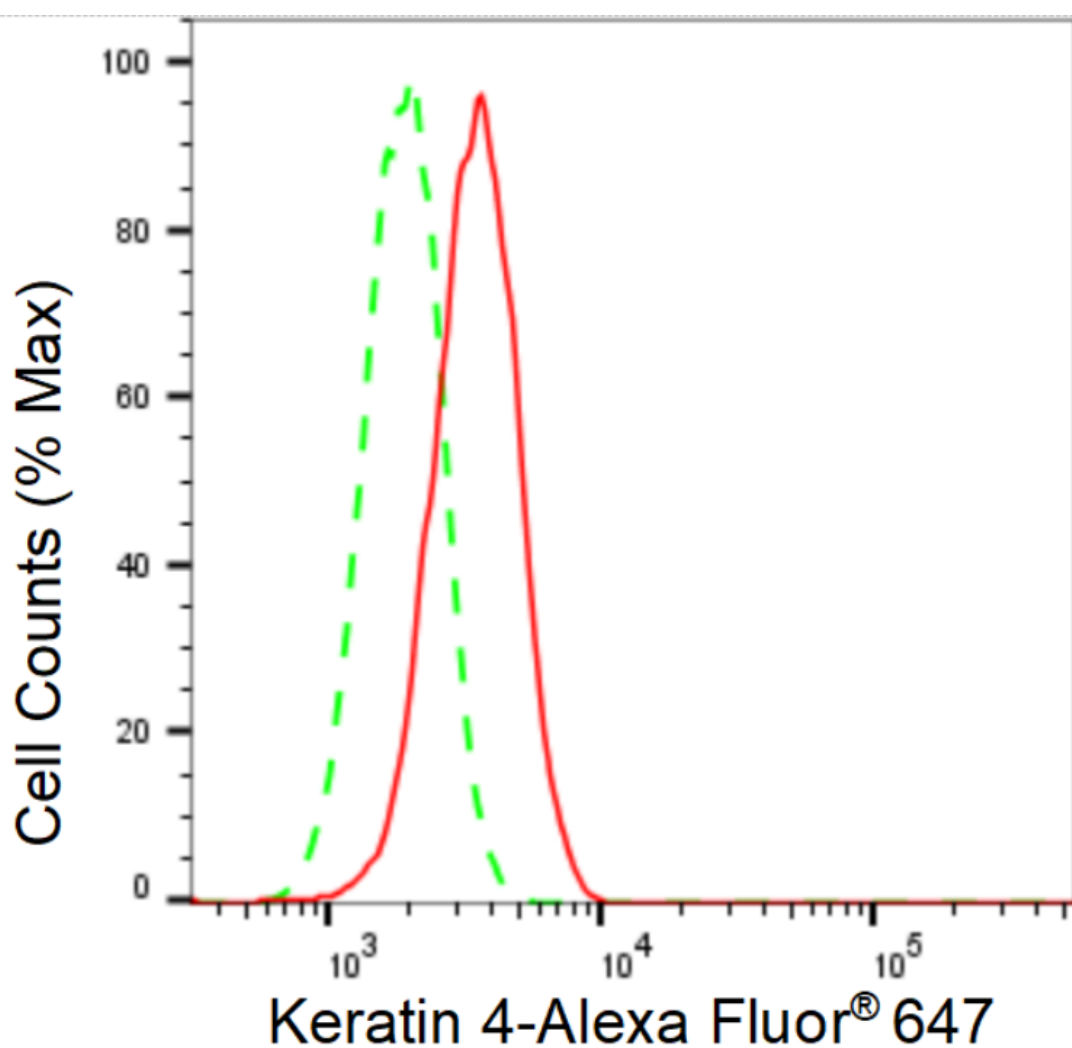
SUPPORT

SUPPORT@GENUINBIOTECH.COM
TEL: +1-540-855-7041

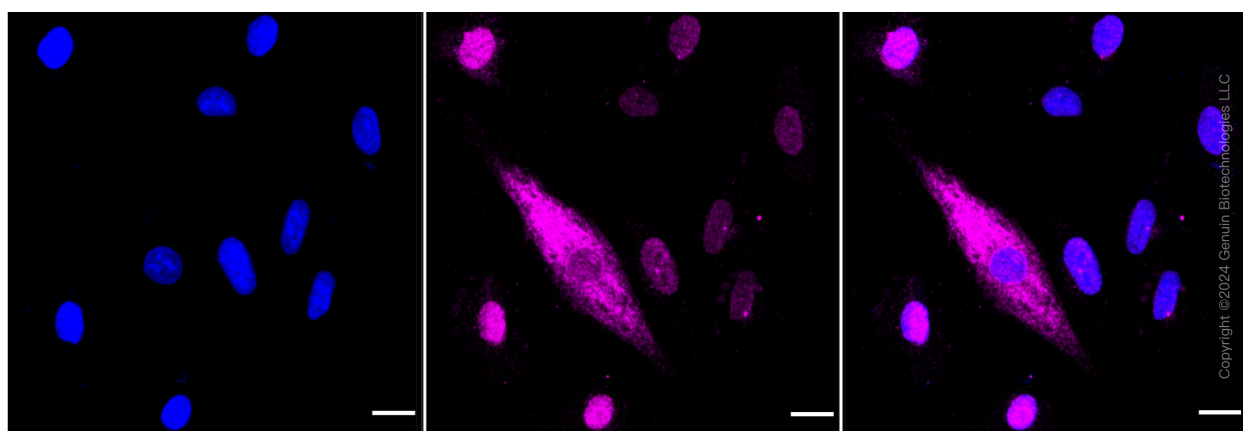
ORDERS

SALES@GENUINBIOTECH.COM
FAX: +1-540-855-7041

WWW.GENUINBIOTECH.COM



Flow cytometric analysis of Keratin 4 expression in H9c2 cells using Keratin 4 antibody (Cat#62132, 1:2,000). Green, isotype control; red, Keratin 4.



Immunocytochemical staining of H9C2 cells with anti-Keratin 4 antibody (Cat#62132, 1:1,000). Nuclei were stained blue with DAPI; Keratin 4 was stained magenta with Alexa Fluor® 647.

SUPPORT

SUPPORT@GENUINBIOTECH.COM
TEL: +1-540-855-7041

ORDERS

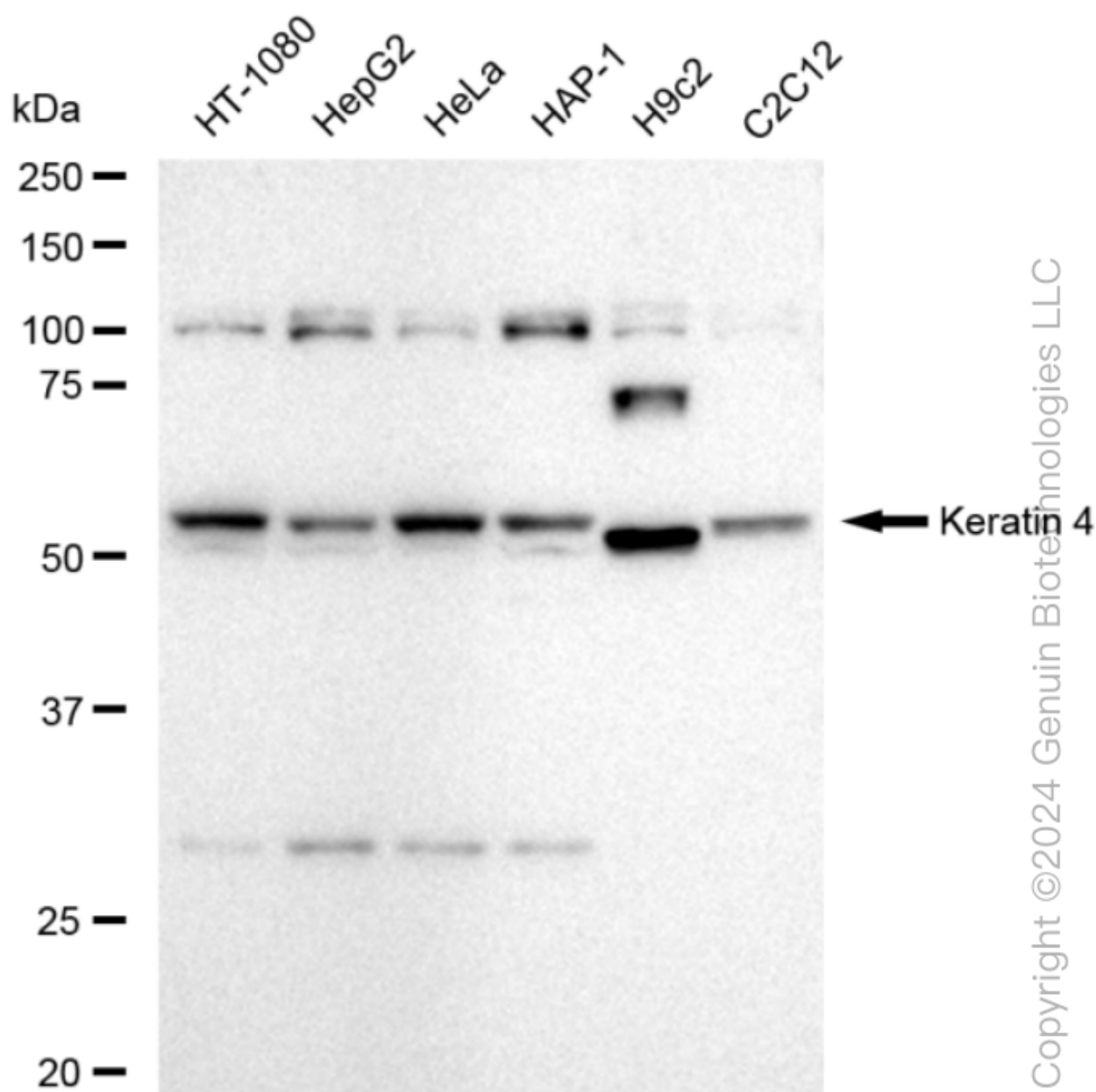
SALES@GENUINBIOTECH.COM
FAX: +1-540-855-7041

WWW.GENUINBIOTECH.COM

KD-Validated Anti-Keratin 4 Recombinant Rabbit Monoclonal Antibody

PAGE 3

Images were taken using Leica stellaris 5. Protein abundance based on laser Intensity and smart gain: Medium. Scale bar: 20 μ m.



Western blotting analysis using anti-Keratin 4 antibody (Cat#62132). Total cell lysates (30 μ g) from various cell lines were loaded and separated by SDS-PAGE. The blot was incubated with anti-Keratin 4 antibody (Cat#62132, 1:5,000) and HRP-conjugated goat anti-rabbit secondary antibody (Cat#201, 1:20,000) respectively. Image was developed using FeQ™ ECL Substrate Kit (Cat#226).

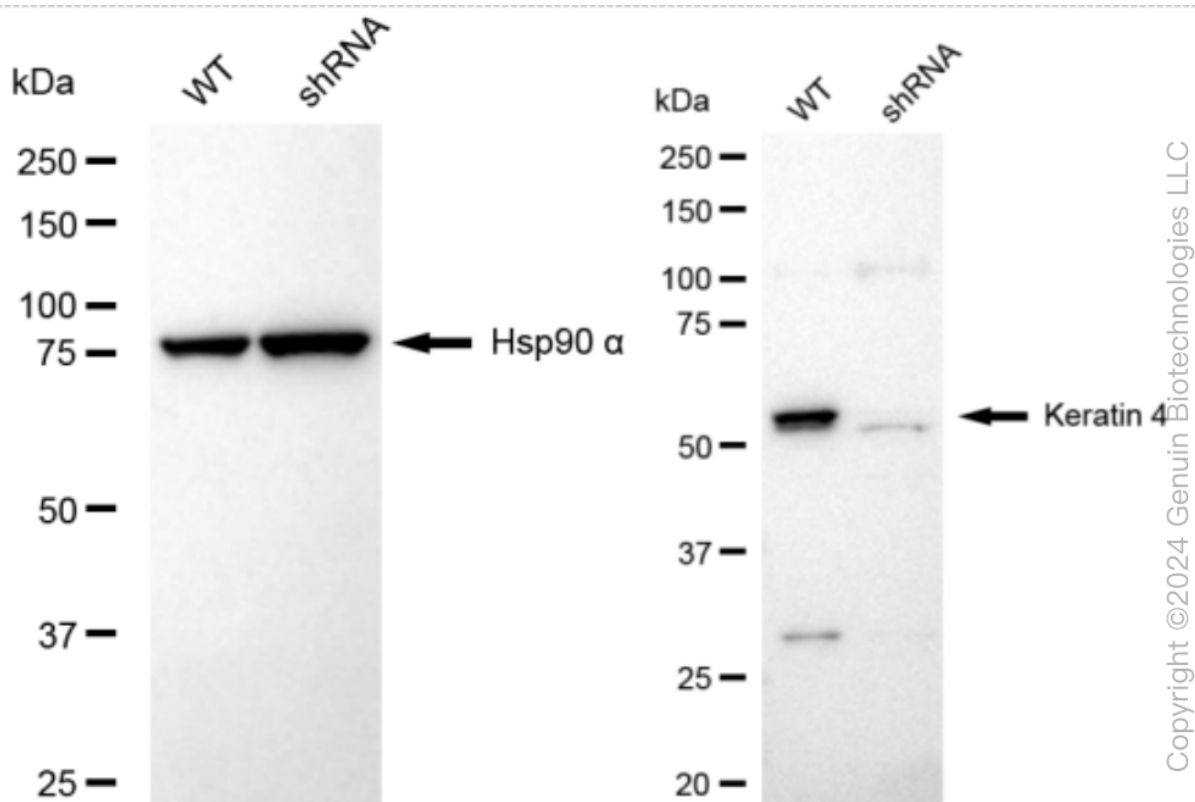
SUPPORT

SUPPORT@GENUINBIOTECH.COM
TEL: +1-540-855-7041

ORDERS

SALES@GENUINBIOTECH.COM
FAX: +1-540-855-7041

WWW.GENUINBIOTECH.COM



Western blotting analysis using anti-Keratin 4 antibody (Cat#62132). Keratin 4 expression in wild type (WT) and Keratin 4 shRNA knockdown (KD) HeLa cells with 20 µg of total cell lysates. Hsp90 α serves as a loading control. The blot was incubated with anti-Keratin 4 antibody (Cat#62132, 1:5,000) and HRP-conjugated goat anti-rabbit secondary antibody (Cat#201, 1:20,000) respectively. Image was developed using NaQ™ ECL Substrate Kit (Cat#716).