

KD-Validated Anti-Histone deacetylase 6 Recombinant Rabbit Monoclonal Antibody



Catalog #: 62136

Aliases

HDAC6; Histone Deacetylase 6; HD6; KIAA0901; PPP1R90; JM21; Protein Phosphatase 1, Regulatory Subunit 90; Tubulin-Lysine Deacetylase HDAC6; Alpha-Tubulin Deacetylase HDAC6; EC 3.5.1.98; FLJ16239; EC 3.5.1.-; CPBHM; KDAC6

Background

Gene Name: HDAC6

NCBI Gene Entry: [10013](#)

UniProt Entry: [Q9UBN7](#)

Application Information

Molecular Weight: Predicted, 131 kDa, observed, 160 kDa

Clonality: Rabbit monoclonal antibody

Clone ID: 23GB6170

Species Reactivity: Human

Applications Tested: Western blotting (WB), flow cytometry (FCM), immunocytochemistry (IC)

Immunogen

A synthesized peptide derived from human HDAC6

Isotype

Rabbit IgG

Storage Buffer

Supplied in PBS (pH 7.4) containing 50% glycerol, and 0.02% sodium azide.

Storage

Store at -20 °C for one year.

Recommended Dilutions

Western Blotting (WB): 1:4000-1:20,000

Flow Cytometry (FCM): 1:2,000

Immunocytochemistry (IC): 1:100-1:1,000

Note: This product is for research use only.

SUPPORT

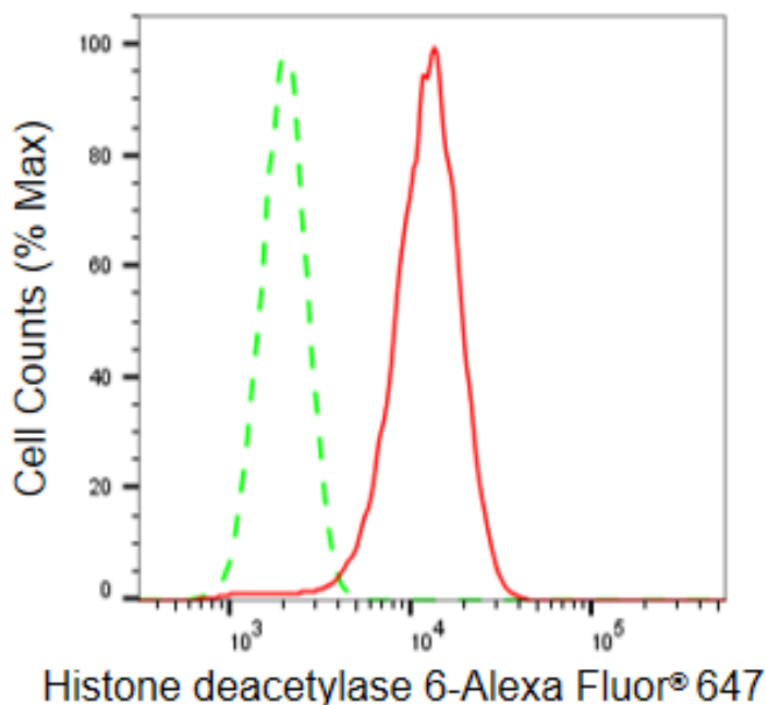
SUPPORT@GENUINBIOTECH.COM
TEL: +1-540-855-7041

ORDERS

SALES@GENUINBIOTECH.COM
FAX: +1-540-855-7041

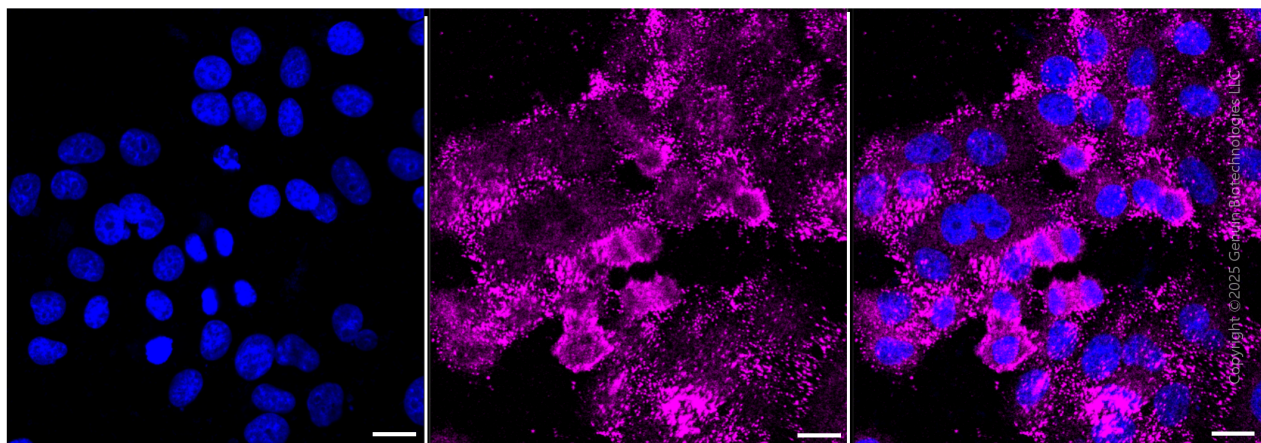
WWW.GENUINBIOTECH.COM

Validation Data



Copyright ©2024 Genuin Biotechnologies LLC

Flow cytometric analysis of Histone deacetylase 6 expression in HepG2 cells using Histone deacetylase 6 antibody (Cat#62136, 1:2,000). Green, isotype control; red, Histone deacetylase 6.



Immunocytochemical staining of HepG2 cells with anti-Histone deacetylase 6 antibody (Cat#62136, 1:1,000) . Nuclei were stained blue with DAPI; Histone deacetylase 6 was stained magenta with Alexa Fluor® 647. Images were taken using Leica stellaris 5. Protein abundance based on laser Intensity and smart gain: Medium. Scale bar, 20 μ m.

SUPPORT

SUPPORT@GENUINBIOTECH.COM
TEL: +1-540-855-7041

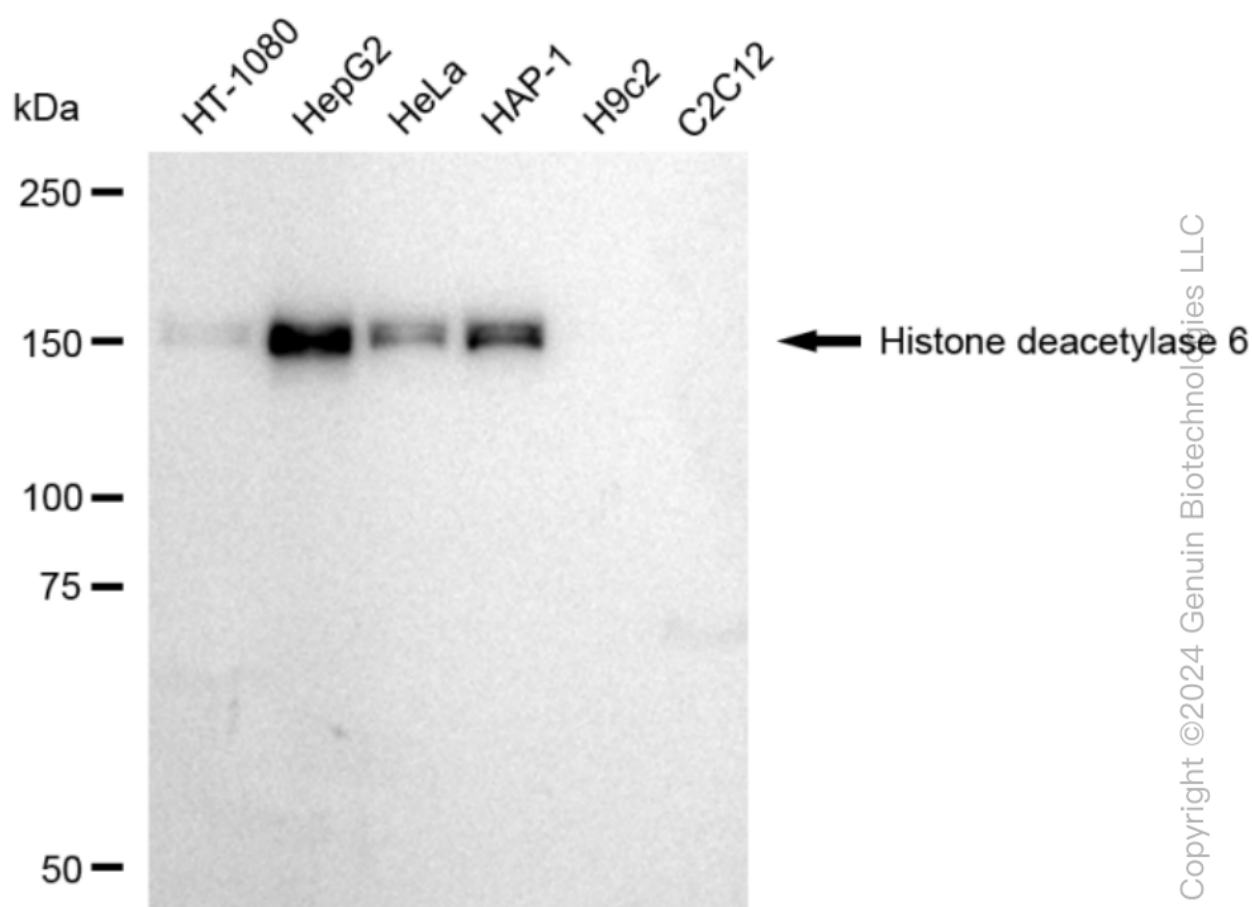
ORDERS

SALES@GENUINBIOTECH.COM
FAX: +1-540-855-7041

WWW.GENUINBIOTECH.COM

KD-Validated Anti-Histone deacetylase 6 Recombinant Rabbit Monoclonal Antibody

PAGE 3



Western blotting analysis using anti-Histone deacetylase 6 antibody (Cat#62136). Total cell lysates (30 µg) from various cell lines were loaded and separated by SDS-PAGE. The blot was incubated with anti-Histone deacetylase 6 antibody (Cat#62136, 1:20,000) and HRP-conjugated goat anti-rabbit secondary antibody (Cat#201, 1:20,000) respectively. Image was developed using FeQ™ ECL Substrate Kit (Cat#226).

SUPPORT

SUPPORT@GENUINBIOTECH.COM
TEL: +1-540-855-7041

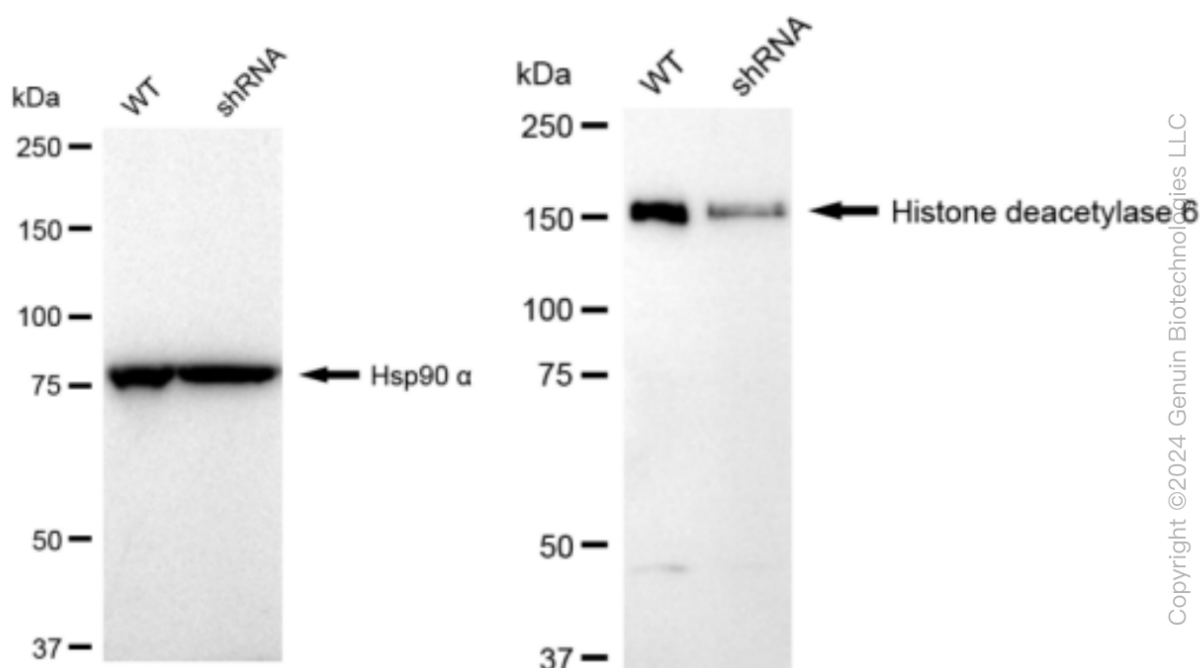
ORDERS

SALES@GENUINBIOTECH.COM
FAX: +1-540-855-7041

WWW.GENUINBIOTECH.COM

KD-Validated Anti-Histone deacetylase 6 Recombinant Rabbit Monoclonal Antibody

PAGE 4



Western blotting analysis using anti-Histone deacetylase 6 antibody (Cat#62136). Histone deacetylase 6 expression in wild type (WT) and Histone deacetylase 6 shRNA knockdown (KD) HT-1080 cells with 30 µg of total cell lysates. Hsp90 α serves as a loading control. The blot was incubated with anti-Histone deacetylase 6 antibody (Cat#62136, 1:20,000) and HRP-conjugated goat anti-rabbit secondary antibody (Cat#201, 1:20,000) respectively. Image was developed using FeQ™ ECL Substrate Kit (Cat#226).

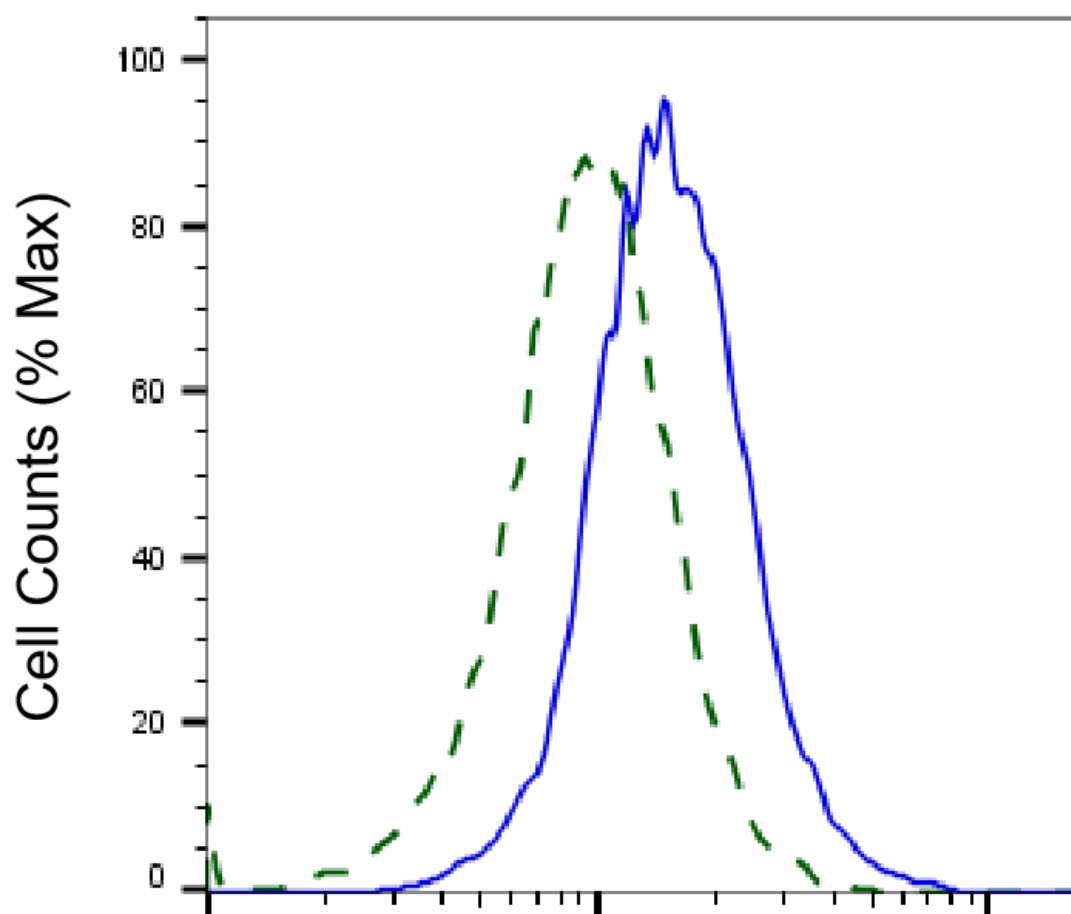
SUPPORT

SUPPORT@GENUINBIOTECH.COM
TEL: +1-540-855-7041

ORDERS

SALES@GENUINBIOTECH.COM
FAX: +1-540-855-7041

WWW.GENUINBIOTECH.COM



Copyright ©2025 Genuin Biotechnologies LLC

Histone deacetylase 6-Alexa Fluor® 647

Validation of Histone deacetylase 6 knockdown using flow cytometry. Wild-type(WT, Blue) and knockdown(KD, Green) HT1080 cells were stained with anti-Histone deacetylase 6 antibody (Cat#62136, 1:2,000) and analyzed using BD flow cytometer.