

KD-Validated Anti-JUNB Recombinant Rabbit Monoclonal Antibody



Catalog #: 62137

Aliases

JUNB; JunB Proto-Oncogene, AP-1 Transcription Factor Subunit; Transcription Factor AP-1 Subunit JunB; Transcription Factor JunB; Transcription Factor Jun-B; Jun B Proto-Oncogene; Activator Protein 1; AP-1

Background

Gene Name: JUNB

NCBI Gene Entry: [3726](#)

UniProt Entry: [P17275](#)

Application Information

Molecular Weight: Predicted, 36 kDa, observed, 43 kDa

Clonality: Rabbit monoclonal antibody

Clone ID: 23GB6175

Species Reactivity: Human, mouse, rat

Applications Tested: Western blotting (WB), flow cytometry (FCM), immunocytochemistry (IC)

Immunogen

A synthesized peptide derived from human JunB

Isotype

Rabbit IgG

Storage Buffer

Supplied in PBS (pH 7.4) containing 50% glycerol, and 0.02% sodium azide.

Storage

Store at -20 °C for one year.

Recommended Dilutions

Western Blotting (WB): 1:1,000-1:5,000

Flow Cytometry (FCM): 1:2,000

Immunocytochemistry (IC): 1:100-1:1,000

Note: This product is for research use only.

SUPPORT

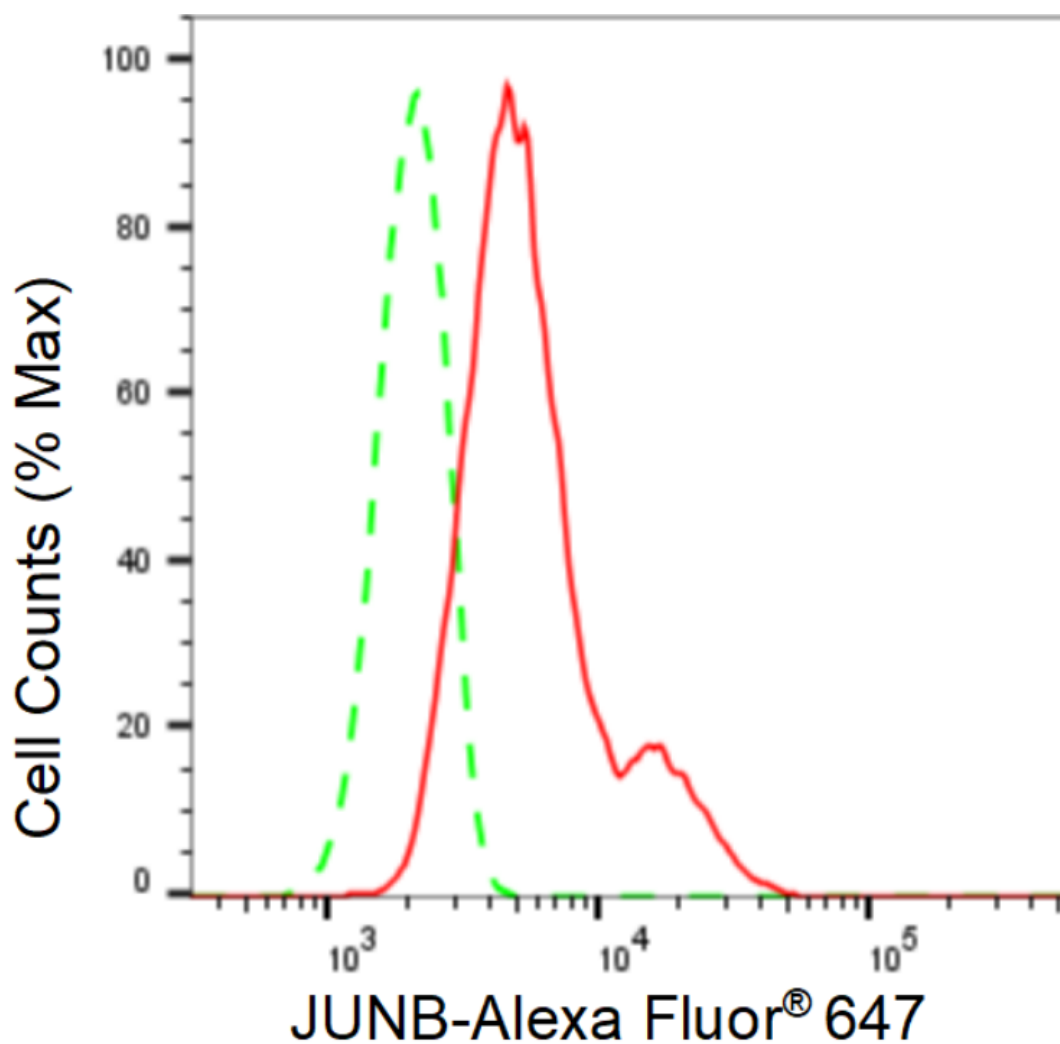
SUPPORT@GENUINBIOTECH.COM
TEL: +1-540-855-7041

ORDERS

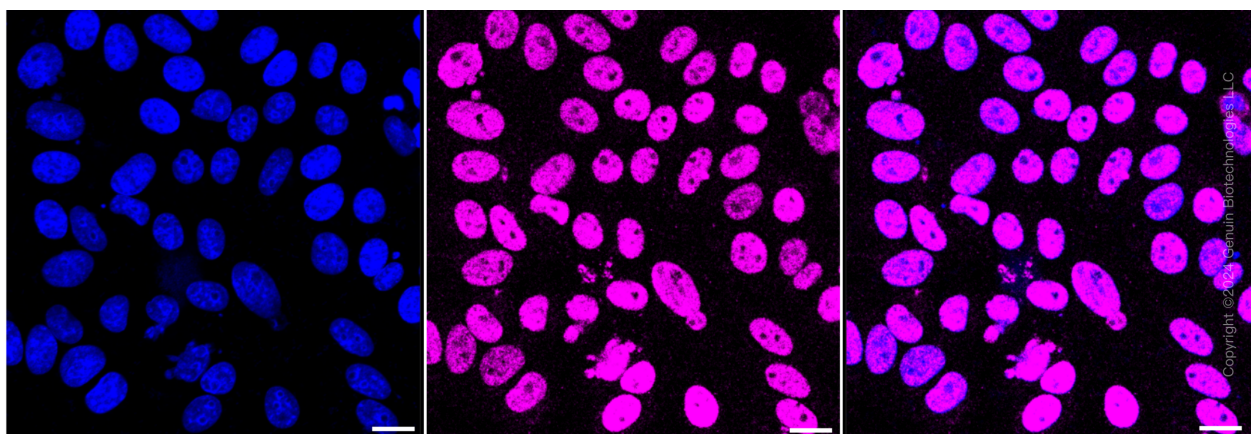
SALES@GENUINBIOTECH.COM
FAX: +1-540-855-7041

WWW.GENUINBIOTECH.COM

Validation Data



Flow cytometric analysis of JUNB expression in HepG2 cells using JUNB antibody (Cat#62137, 1:2,000). Green, isotype control; red, JUNB.



Immunocytochemical staining of HepG2 cells with anti-JUNB antibody (Cat#62137, 1:1,000).

SUPPORT

SUPPORT@GENUINBIOTECH.COM
TEL: +1-540-855-7041

ORDERS

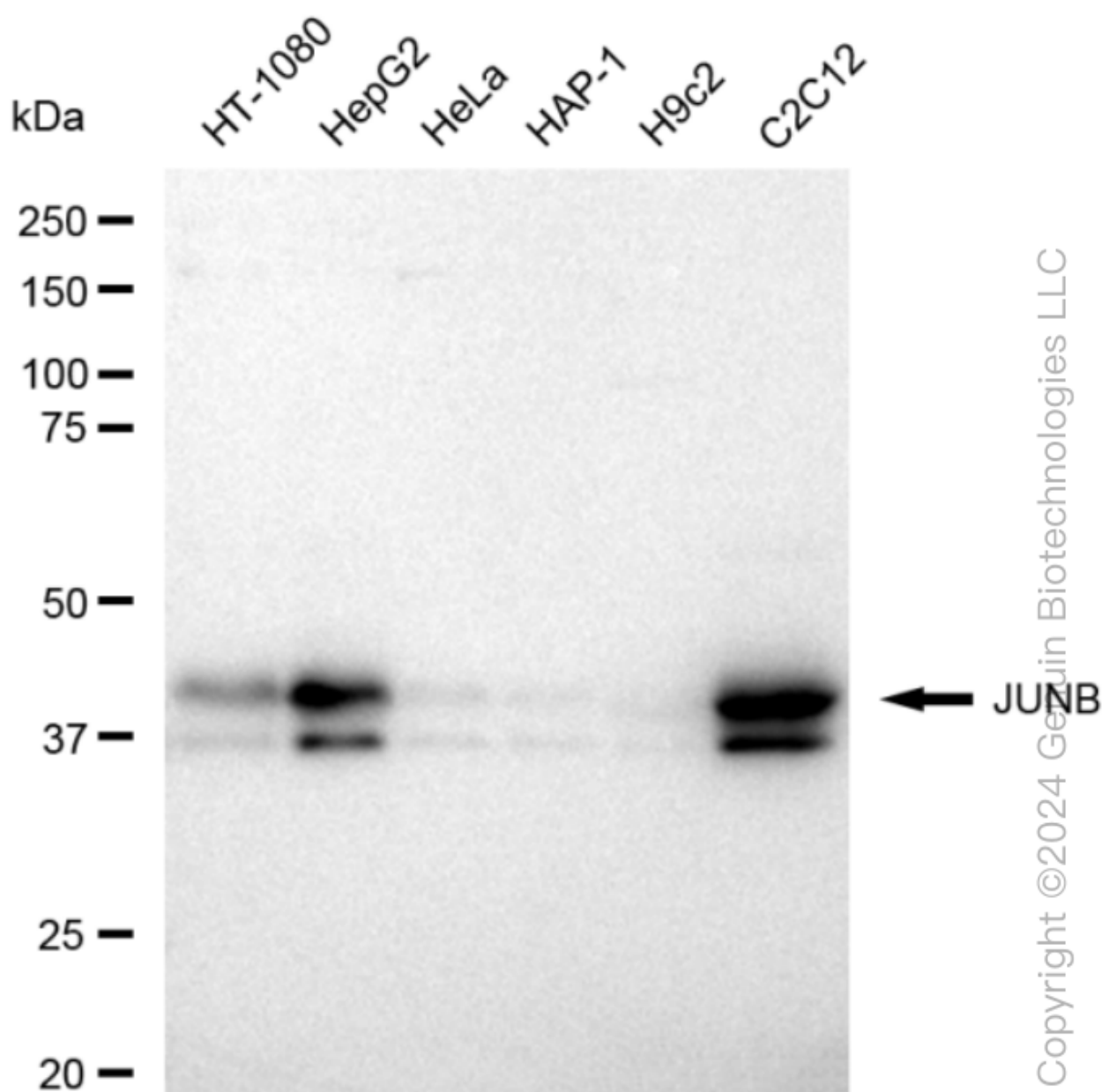
SALES@GENUINBIOTECH.COM
FAX: +1-540-855-7041

WWW.GENUINBIOTECH.COM

KD-Validated Anti-JUNB Recombinant Rabbit Monoclonal Antibody

PAGE 3

Nuclei were stained blue with DAPI; JUNB was stained magenta with Alexa Fluor® 647. Images were taken using Leica stellaris 5. Protein abundance based on laser Intensity and smart gain: Medium. Scale bar: 20 μ m.



Western blotting analysis using anti-JUNB antibody (Cat#62137). Total cell lysates (30 μ g) from various cell lines were loaded and separated by SDS-PAGE. The blot was incubated with anti-JUNB antibody (Cat#62137, 1:5,000) and HRP-conjugated goat anti-rabbit secondary antibody (Cat#201, 1:20,000) respectively. Image was developed using FeQ™ ECL Substrate Kit (Cat#226).

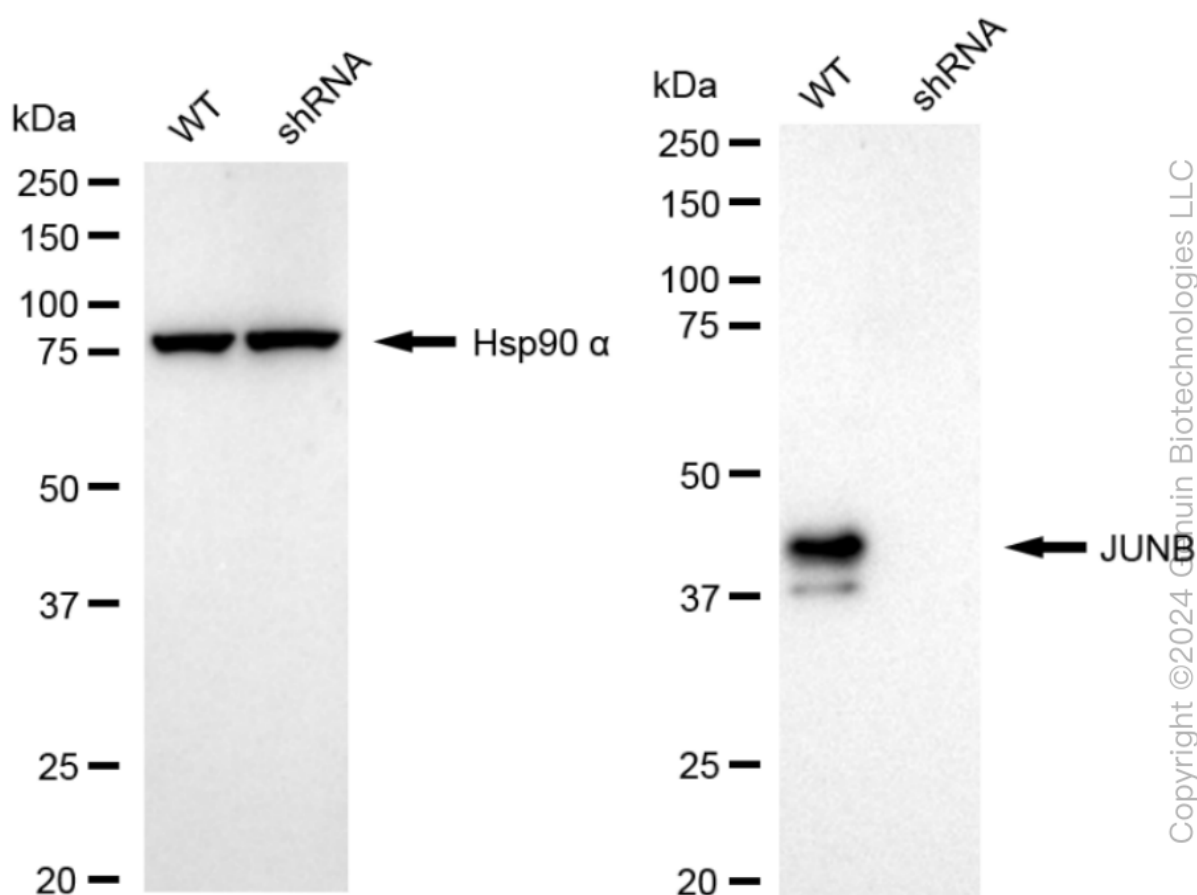
SUPPORT

SUPPORT@GENUINBIOTECH.COM
TEL: +1-540-855-7041

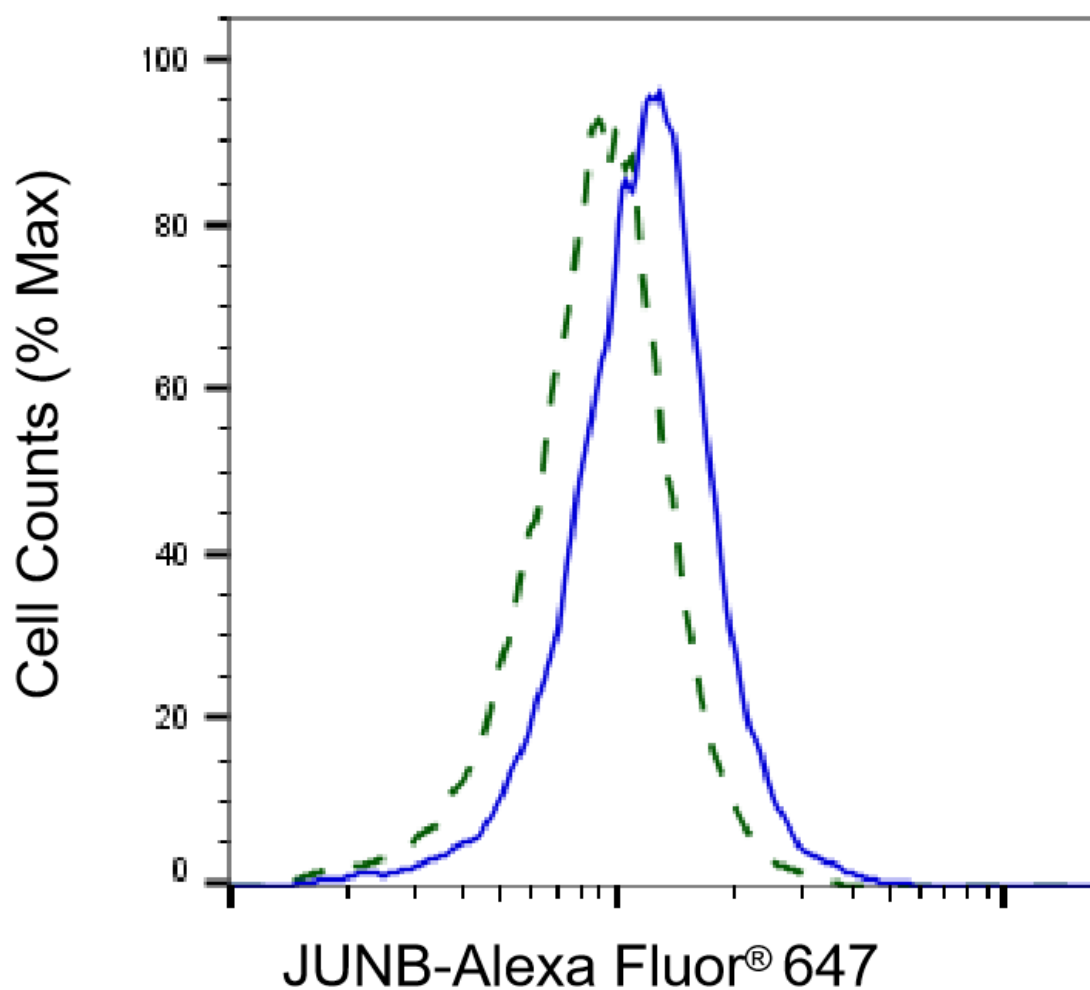
ORDERS

SALES@GENUINBIOTECH.COM
FAX: +1-540-855-7041

WWW.GENUINBIOTECH.COM



Western blotting analysis using anti-JunB antibody (Cat#62137). JunB expression in wild type (WT) and JunB shRNA knockdown (KD) HeLa cells with 20 μ g of total cell lysates. Hsp90 α serves as a loading control. The blot was incubated with anti-JunB antibody (Cat#62137, 1:5,000) and HRP-conjugated goat anti-rabbit secondary antibody (Cat#201, 1:20,000) respectively. Image was developed using NaQ™ ECL Substrate Kit (Cat#716).



Copyright ©2025 Genuin Biotechnologies LLC

Validation of JUNB knockdown using flow cytometry. Wild-type(WT, Blue) and knockdown(KD, Green) HeLa cells were stained with anti-JUNB antibody (Cat#62137, 1:2,000) and analyzed using BD flow cytometer.