

KD-Validated Anti-Hsp105 Recombinant Rabbit Monoclonal Antibody



Catalog #: 62140

Aliases

HSPH1; Heat Shock Protein Family H (Hsp110) Member 1; KIAA0201; NY-CO-25; HSP105B; HSP105A; Heat Shock 105kDa/110kDa Protein 1; Heat Shock Protein 105 KDa; Antigen NY-CO-25; HSP105; Heat Shock 110 KDa Protein; HSP110

Background

Gene Name: HSPH1

NCBI Gene Entry: [10808](#)

UniProt Entry: [Q92598](#)

Application Information

Molecular Weight: Predicted, 97 kDa, observed, 105 kDa

Clonality: Rabbit monoclonal antibody

Clone ID: 23GB6190

Species Reactivity: Human, mouse, rat

Applications Tested: Western blotting (WB), flow cytometry (FCM), immunocytochemistry (IC)

Immunogen

A synthesized peptide derived from human Hsp105

Isotype

Rabbit IgG

Storage Buffer

Supplied in PBS (pH 7.4) containing 50% glycerol, and 0.02% sodium azide.

Storage

Store at -20 °C for one year.

Recommended Dilutions

Western Blotting (WB): 1:1,000-1:5,000

Flow Cytometry (FCM): 1:2,000

Immunocytochemistry (IC): 1:100-1:1,000

Note: This product is for research use only.

SUPPORT

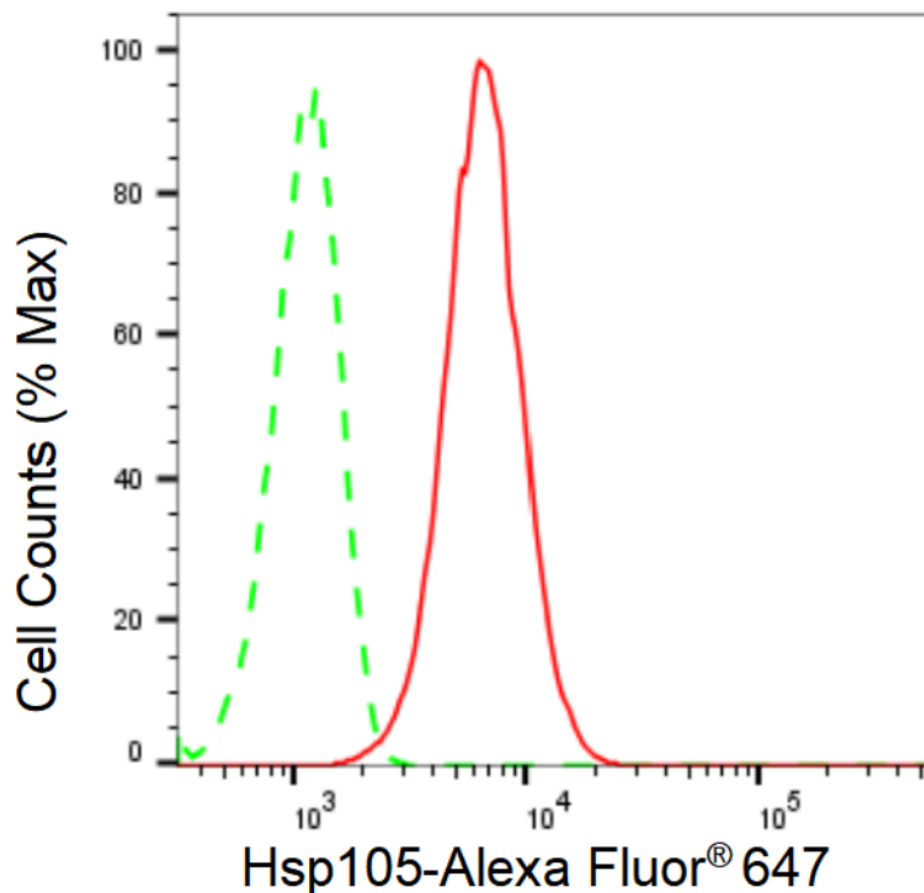
SUPPORT@GENUINBIOTECH.COM
TEL: +1-540-855-7041

ORDERS

SALES@GENUINBIOTECH.COM
FAX: +1-540-855-7041

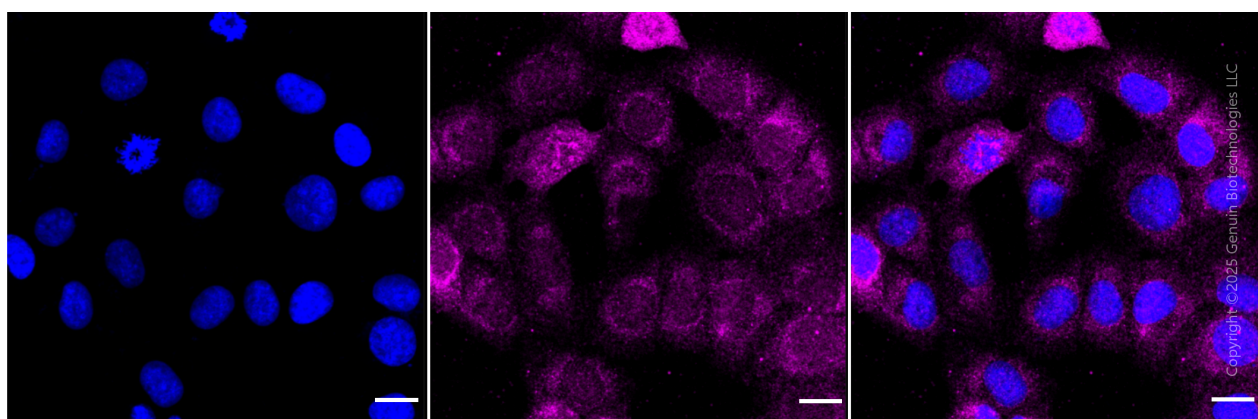
WWW.GENUINBIOTECH.COM

Validation Data



Copyright ©2024 Genuin Biotechnologies LLC

Flow cytometric analysis of Hsp105 expression in HT-1080 cells using Hsp105 antibody (Cat#62140, 1:2,000). Green, isotype control; red, Hsp105.



Copyright ©2025 Genuin Biotechnologies LLC

Immunocytochemical staining of HT-1080 cells with anti-Hsp105 antibody (Cat #62140, 1:1,000). Nuclei were stained blue with DAPI; Hsp105 was stained magenta with Alexa Fluor® 647. Images were taken using Leica stellaris 5. Protein abundance based on laser Intensity and smart gain: Medium. Scale bar, 20 µm.

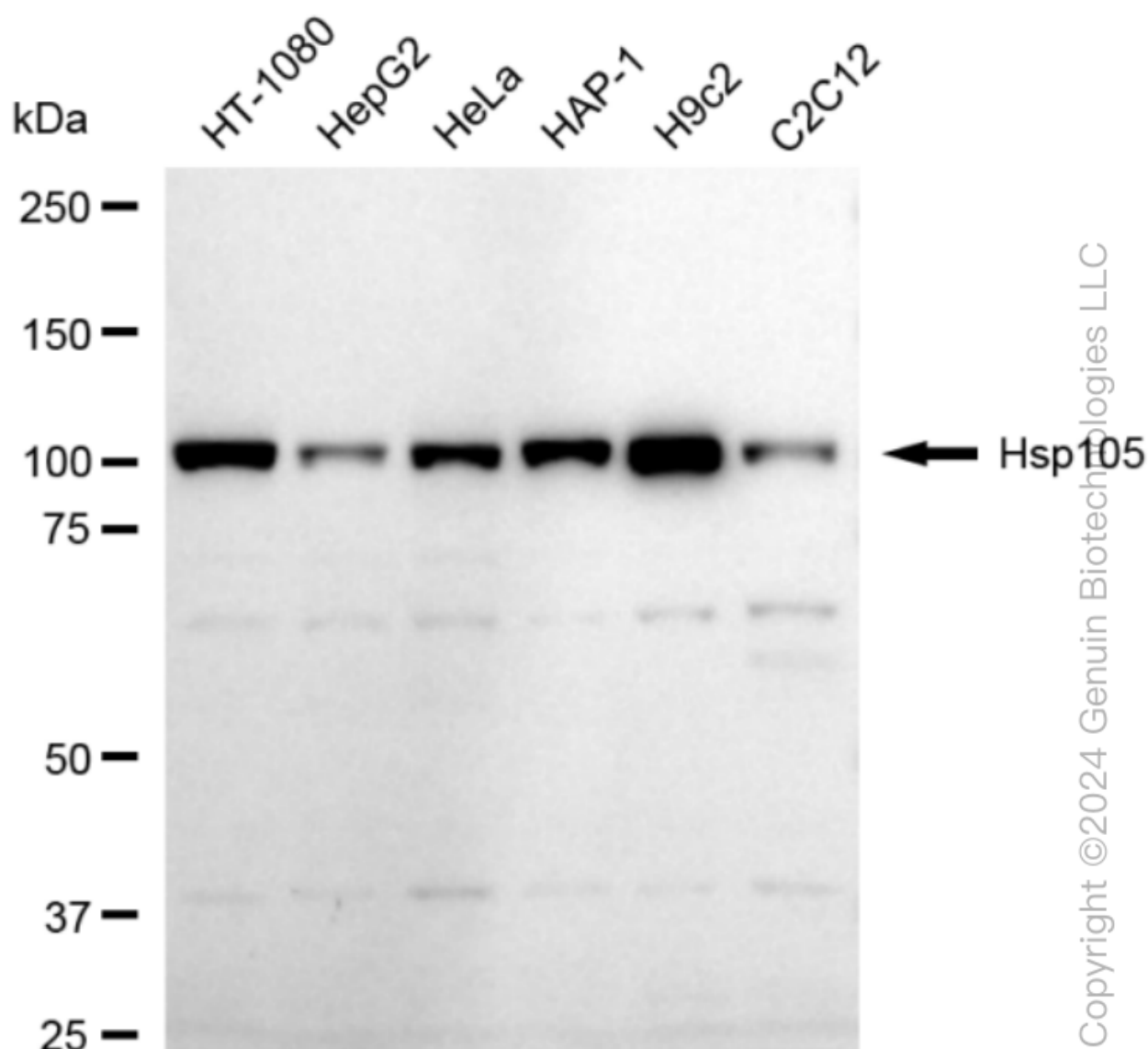
SUPPORT

SUPPORT@GENUINBIOTECH.COM
TEL: +1-540-855-7041

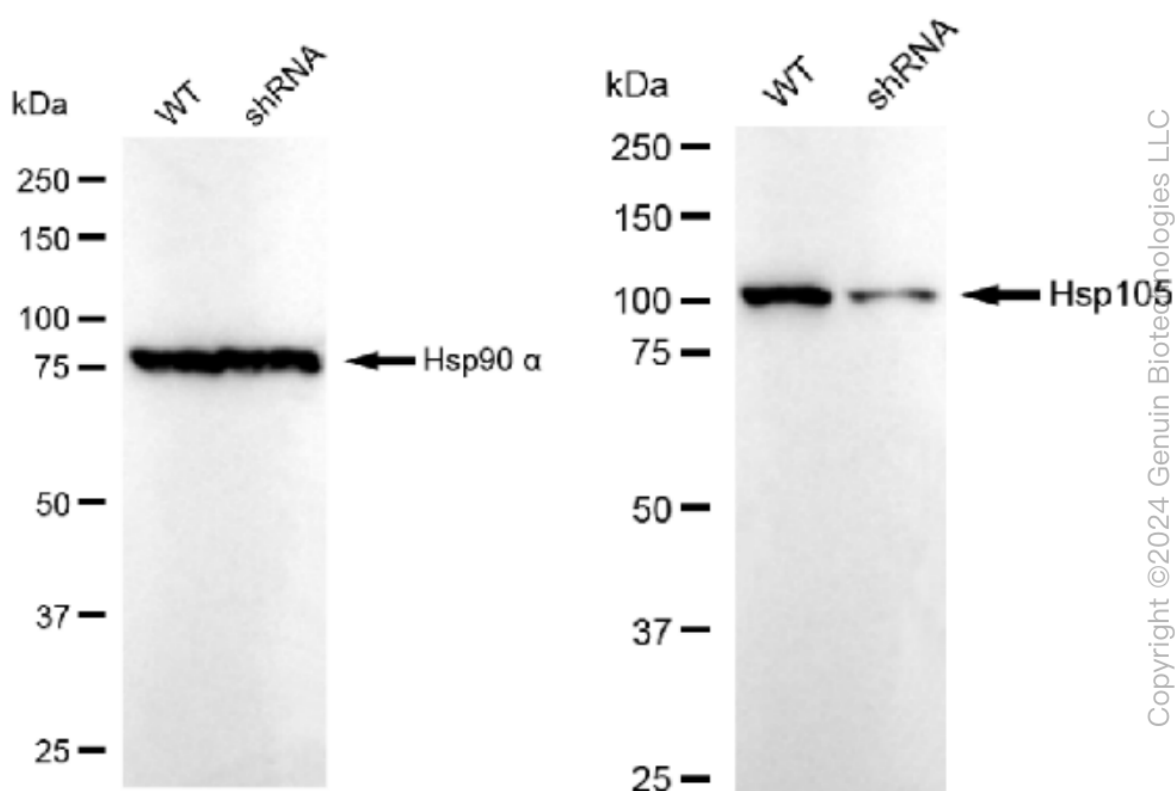
ORDERS

SALES@GENUINBIOTECH.COM
FAX: +1-540-855-7041

WWW.GENUINBIOTECH.COM



Western blotting analysis using anti-Hsp105 antibody (Cat#62140). Total cell lysates (30 μ g) from various cell lines were loaded and separated by SDS-PAGE. The blot was incubated with anti-Hsp105 antibody (Cat#62140, 1:5,000) and HRP-conjugated goat anti-rabbit secondary antibody (Cat#201, 1:20,000) respectively. Image was developed using FeQ™ ECL Substrate Kit (Cat#226).



Western blotting analysis using anti-Hsp105 antibody (Cat#62140). Hsp105 expression in wild type (WT) and Hsp105 shRNA knockdown (KD) HeLa cells with 30 µg of total cell lysates. Hsp90 α serves as a loading control. The blot was incubated with anti-Hsp105 antibody (Cat#62140, 1:5,000) and HRP-conjugated goat anti-rabbit secondary antibody (Cat#201, 1:20,000) respectively. Image was developed using FeQ™ ECL Substrate Kit (Cat#226).