

KD-Validated Anti-CDC42 Rabbit Monoclonal Antibody



Catalog #: 62142

Aliases

CDC42; Cell Division Cycle 42; Cell Division Control Protein 42 Homolog; G25K GTP-Binding Protein; DJ224A6.1.1 (Cell Division Cycle 42 (GTP-Binding Protein, 25kD)); 25kDa; DJ224A6.1.2 (Cell Division Cycle 42 (GTP-Binding Protein, 25kD)); Cell Division Cycle 42 (GTP Binding Protein, 25kDa); Growth-Regulating Protein; Cell Division Cycle 42 (GTP-Binding Protein, 25kD); GTP Binding Protein; 25kDa; GTP Binding Protein; GTP-Binding Protein; 25kD; CDC42Hs; Small GTP Binding Protein CDC42; G25K

Background

Gene Name: CDC42
NCBI Gene Entry: [998](#)
UniProt Entry: [P60953](#)

Application Information

Molecular Weight: Predicted, 21 kDa, observed, 21 kDa
Clonality: Rabbit monoclonal antibody
Clone ID: 23GB1025
Species Reactivity: Human, mouse, rat
Applications Tested: Western blotting (WB), flow cytometry (FCM), immunocytochemistry (IC)

Immunogen

Recombinant protein of human CDC42

Isotype

Rabbit IgG

Storage Buffer

Supplied in PBS (pH 7.4) containing 50% glycerol, and 0.02% sodium azide.

Storage

Store at -20 °C for one year.

Recommended Dilutions

Western Blotting (WB): 1:1,000-1:5,000
Flow Cytometry (FCM): 1:2,000
Immunocytochemistry (IC): 1:100-1:1,000

SUPPORT

SUPPORT@GENUINBIOTECH.COM
TEL: +1-540-855-7041

ORDERS

SALES@GENUINBIOTECH.COM
FAX: +1-540-855-7041

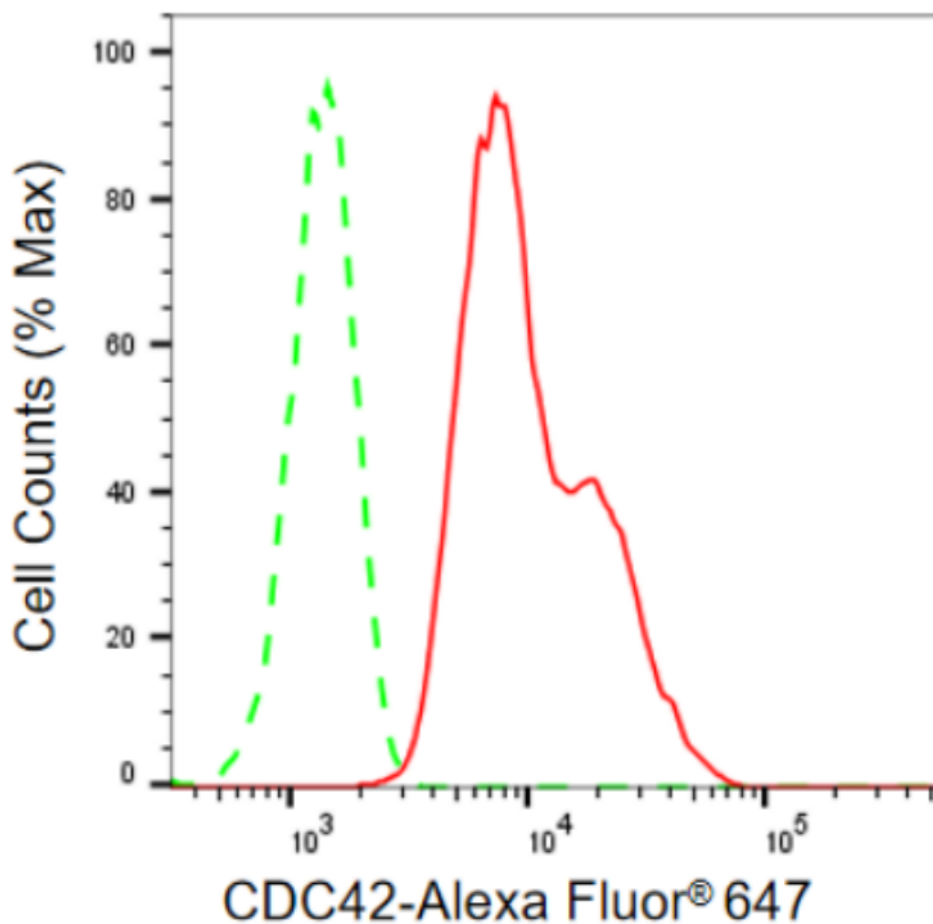
WWW.GENUINBIOTECH.COM

KD-Validated Anti-CDC42 Rabbit Monoclonal Antibody

PAGE 2

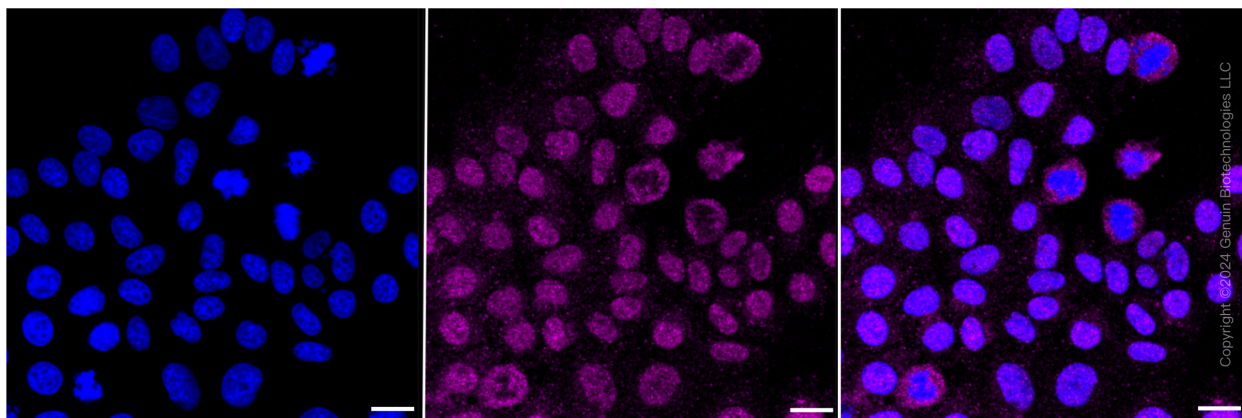
Note: This product is for research use only.

Validation Data



Copyright ©2024 Genuin Biotechnologies LLC

Flow cytometric analysis of CDC42 expression in HepG2 cells using CDC42 antibody (Cat#62142, 1:2,000). Green, isotype control; red, CDC42.



Copyright ©2024 Genuin Biotechnologies LLC

Immunocytochemical staining of HepG2 cells with CDC42 antibody (Cat#62142, 1:1,000). Nuclei

SUPPORT

SUPPORT@GENUINBIOTECH.COM
TEL: +1-540-855-7041

ORDERS

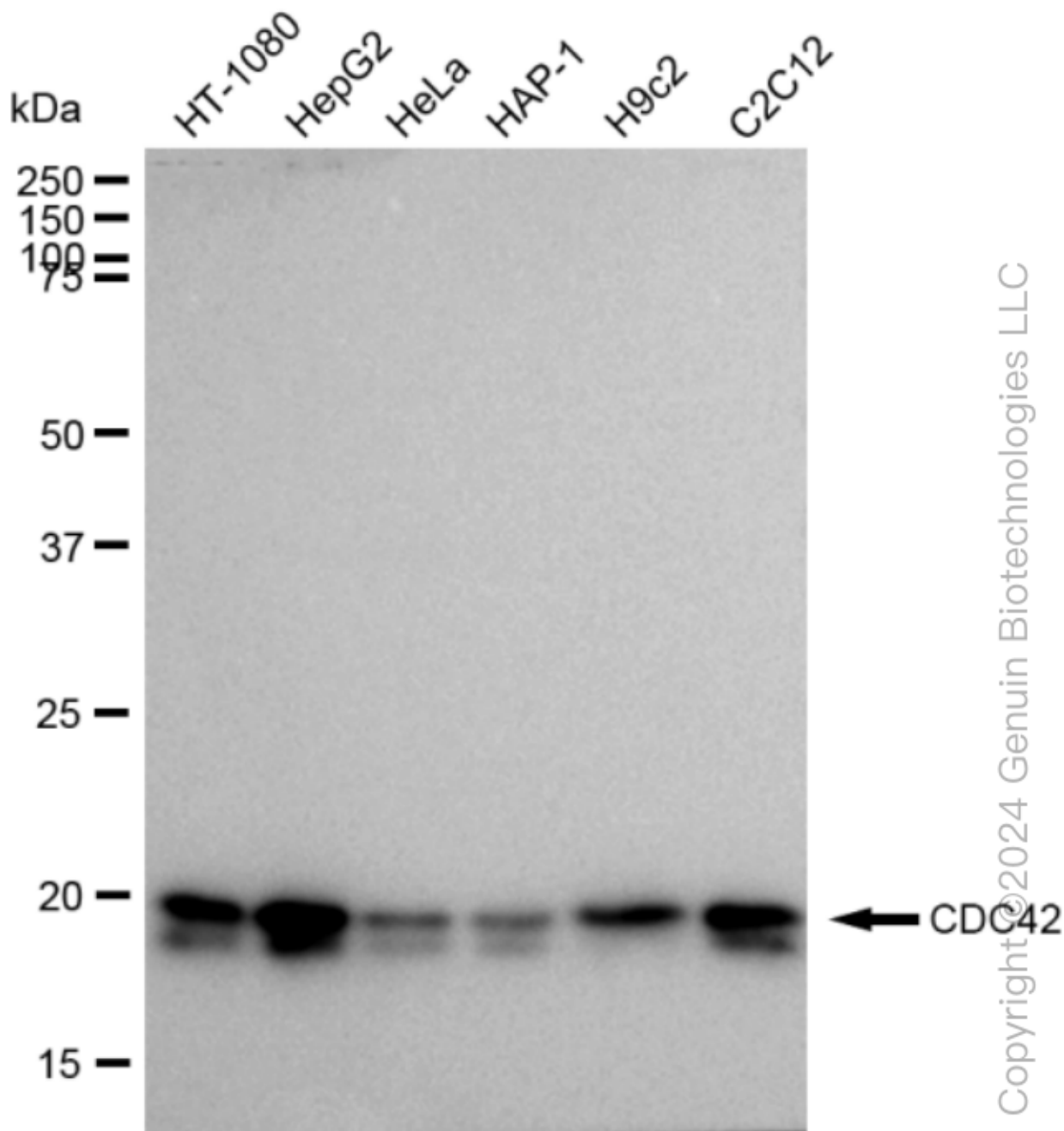
SALES@GENUINBIOTECH.COM
FAX: +1-540-855-7041

WWW.GENUINBIOTECH.COM

KD-Validated Anti-CDC42 Rabbit Monoclonal Antibody

PAGE 3

were stained blue with DAPI; CDC42 was stained magenta with Alexa Fluor® 647. Images were taken using Leica stellaris 5. Protein abundance based on laser Intensity and smart gain: Medium. Scale bar: 20 µm.



Western blotting analysis using anti-CDC42 antibody (Cat#62142). Total cell lysates (30 µg) from various cell lines were loaded and separated by SDS-PAGE. The blot was incubated with anti-CDC42 antibody (Cat#62142, 1:5,000) and HRP-conjugated goat anti-rabbit secondary antibody (Cat#201, 1:20,000) respectively. Image was developed using FeQ™ ECL Substrate Kit (Cat#226).

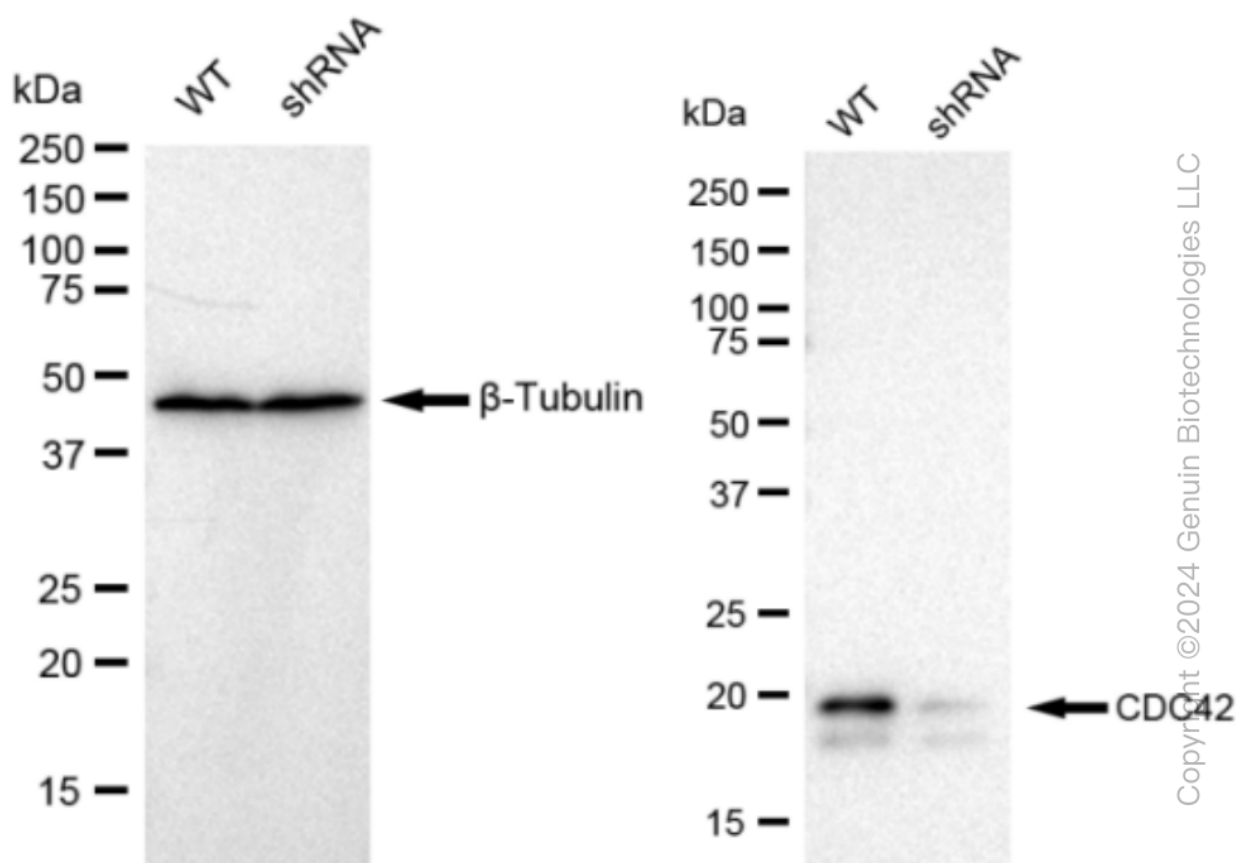
SUPPORT

SUPPORT@GENUINBIOTECH.COM
TEL: +1-540-855-7041

ORDERS

SALES@GENUINBIOTECH.COM
FAX: +1-540-855-7041

WWW.GENUINBIOTECH.COM



Western blotting analysis using anti-CDC42 antibody (Cat#62142). CDC42 expression in wild type (WT) and CDC42 shRNA knockdown (KD) HT-1080 cells with 30 µg of total cell lysates. β-Tubulin serves as a loading control. The blot was incubated with anti-CDC42 antibody (Cat#62142, 1:5,000) and HRP-conjugated goat anti-rabbit secondary antibody (Cat#201, 1:20,000) respectively. Image was developed using FeQ™ ECL Substrate Kit (Cat#226).