

# KD-Validated Anti-Lysine demethylase 1B Recombinant Rabbit Monoclonal Antibody



**Catalog #: 62155**

## Aliases

KDM1B; Lysine Demethylase 1B; LSD2; AOF1; Flavin-Containing Amine Oxidase Domain-Containing Protein 1; Lysine-Specific Histone Demethylase 1B; Lysine-Specific Histone Demethylase; Lysine (K)-Specific Demethylase 1B; DJ298J15.2; BA204B7.3; FLJ34109; FLJ33898; FLJ43328; C6orf193; Amine Oxidase (Flavin Containing) Domain 1; Chromosome 6 Open Reading Frame 193; Amine Oxidase, Flavin Containing 1; EC 1.14.99.66; C6ORF193

## Background

Gene Name: KDM1B

NCBI Gene Entry: [221656](#)

UniProt Entry: [Q8NB78](#)

## Application Information

Molecular Weight: Predicted, 92 kDa, observed, 75 kDa

Clonality: Rabbit monoclonal antibody

Clone ID: 23GB6265

Species Reactivity: Human, rat

Applications Tested: Western blotting (WB), flow cytometry (FCM), immunocytochemistry (IC)

## Immunogen

A synthesized peptide derived from human LSD2 / AOF1

## Isotype

Rabbit IgG

## Storage Buffer

Supplied in PBS (pH 7.4) containing 50% glycerol, and 0.02% sodium azide.

## Storage

Store at -20 °C for one year.

## Recommended Dilutions

Western Blotting (WB): 1:1,000-1:5,000

Flow Cytometry (FCM): 1:2,000

Immunocytochemistry (IC): 1:100-1:1,000

---

### SUPPORT

SUPPORT@GENUINBIOTECH.COM  
TEL: +1-540-855-7041

### ORDERS

SALES@GENUINBIOTECH.COM  
FAX: +1-540-855-7041

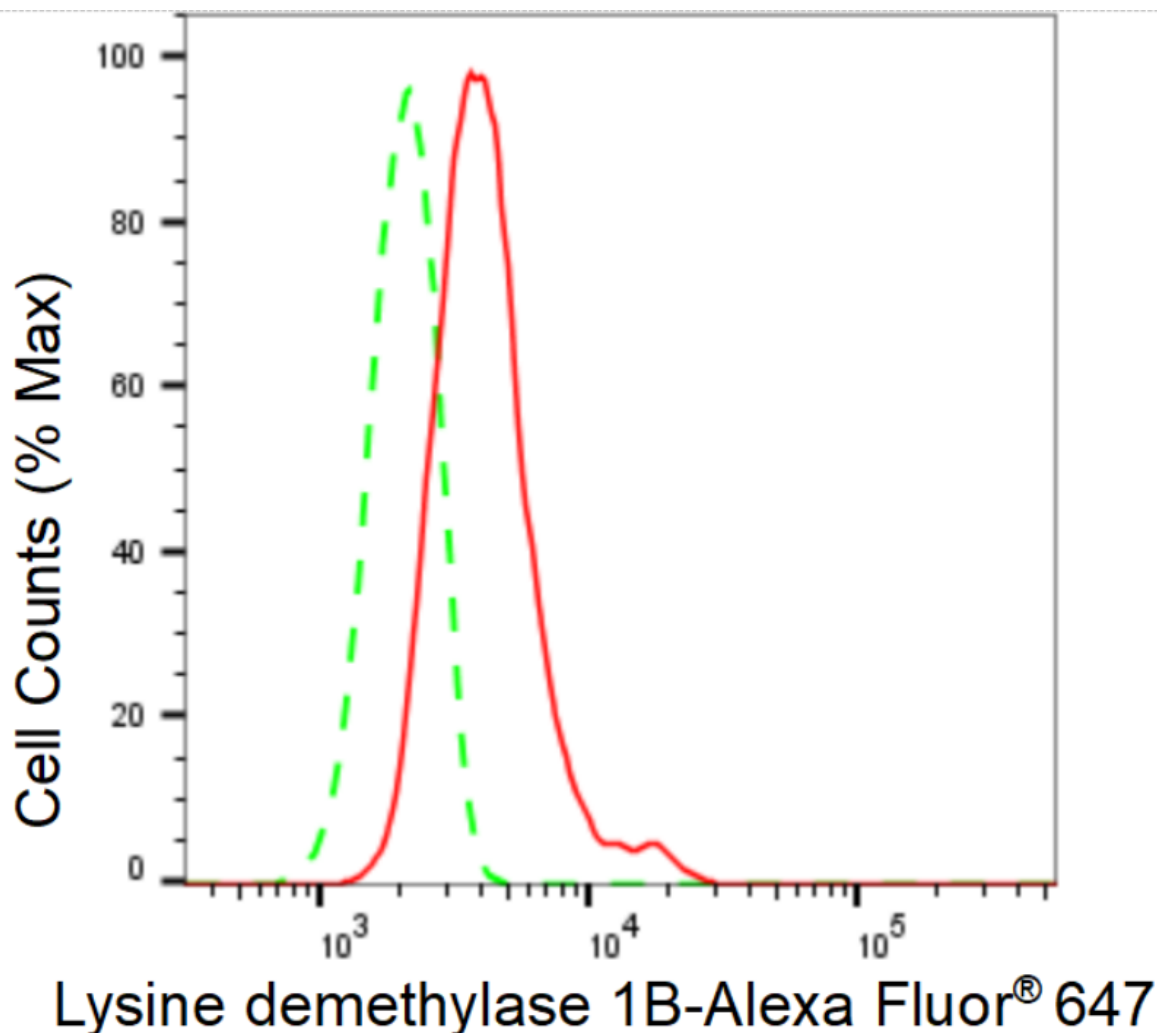
[WWW.GENUINBIOTECH.COM](http://WWW.GENUINBIOTECH.COM)

## KD-Validated Anti-Lysine demethylase 1B Recombinant Rabbit Monoclonal Antibody

PAGE 2

**Note:** This product is for research use only.

### Validation Data



Copyright ©2024 Genuin Biotechnologies LLC

Flow cytometric analysis of Lysine demethylase 1B expression in HepG2 cells using Lysine demethylase 1B antibody (Cat#62155, 1:2,000). Green, isotype control; red, Lysine demethylase 1B.

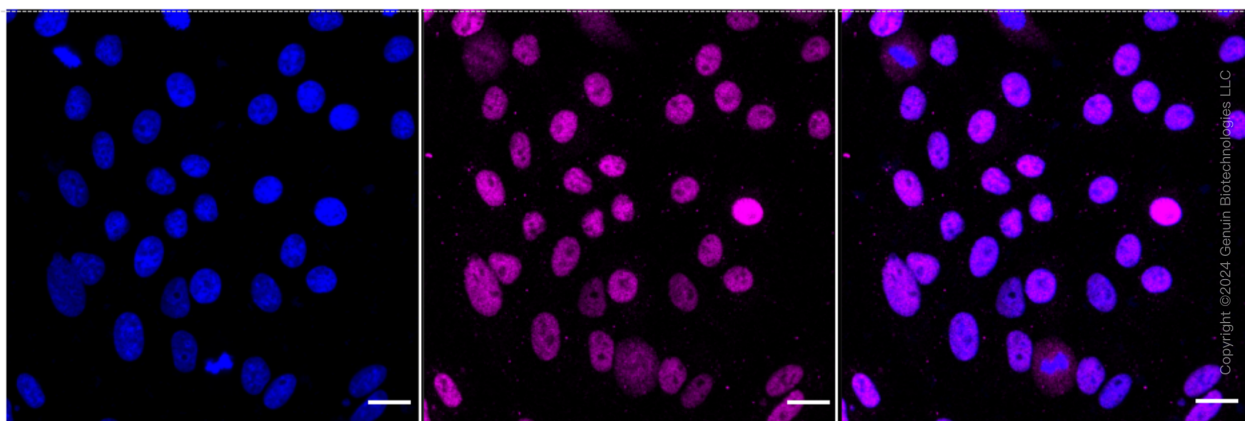
#### SUPPORT

SUPPORT@GENUINBIOTECH.COM  
TEL: +1-540-855-7041

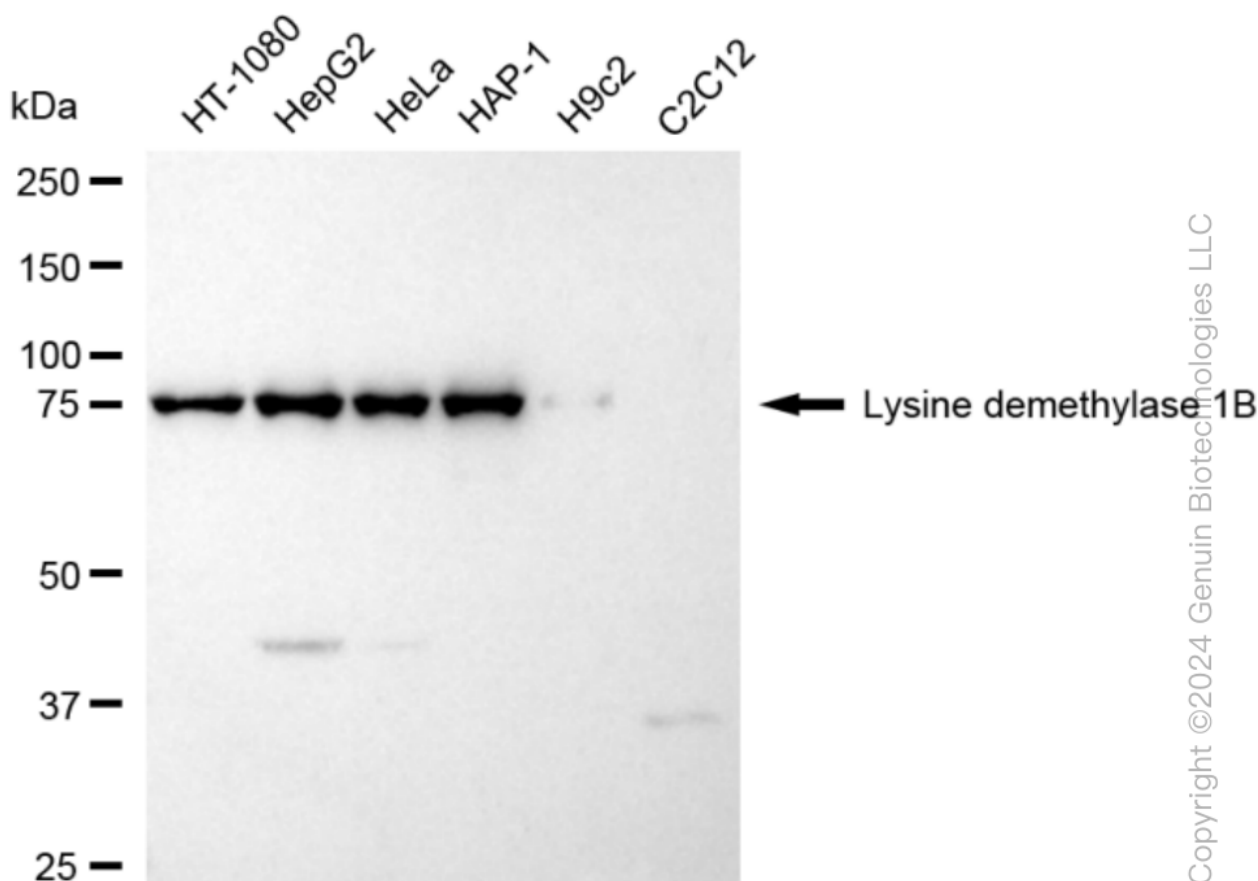
#### ORDERS

SALES@GENUINBIOTECH.COM  
FAX: +1-540-855-7041

WWW.GENUINBIOTECH.COM



Immunocytochemical staining of HepG2 cells with anti-Lysine demethylase 1B antibody (Cat#62155, 1:1,000). Nuclei were stained blue with DAPI; Lysine demethylase 1B was stained magenta with Alexa Fluor® 647. Images were taken using Leica stellaris 5. Protein abundance based on laser Intensity and smart gain: Medium. Scale bar: 20  $\mu$ m.

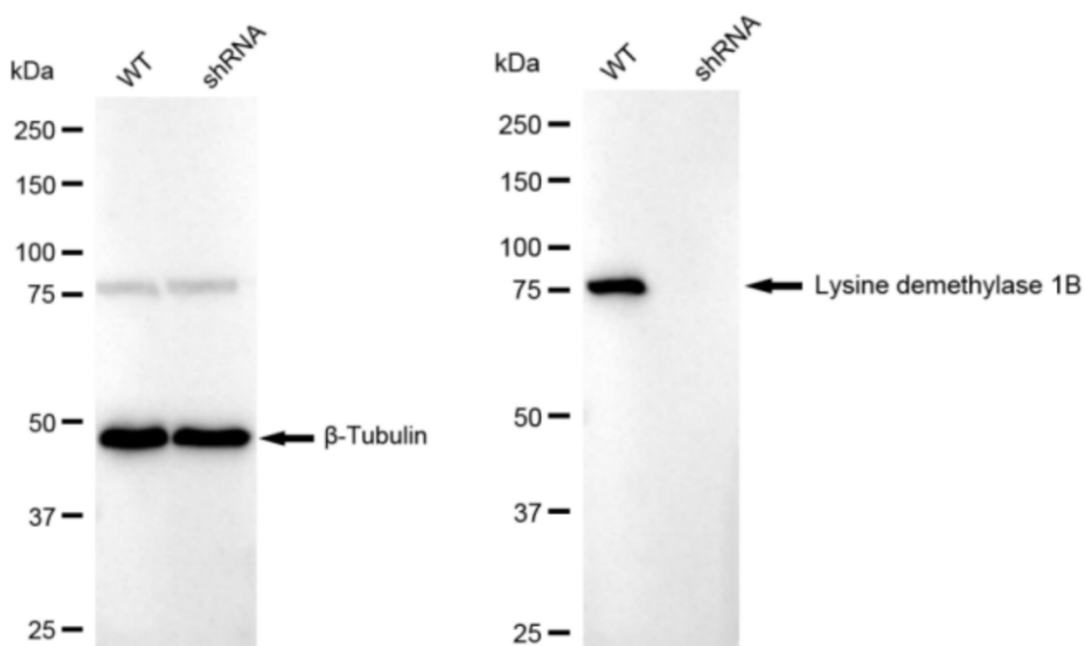


Western blotting analysis using anti-Lysine demethylase 1B antibody (Cat#62155). Total cell lysates (30  $\mu$ g) from various cell lines were loaded and separated by SDS-PAGE. The blot was incubated with anti-Lysine demethylase 1B antibody (Cat#62155, 1:5,000) and HRP-conjugated goat anti-rabbit secondary antibody (Cat#201, 1:20,000) respectively. Image was developed using

## KD-Validated Anti-Lysine demethylase 1B Recombinant Rabbit Monoclonal Antibody

PAGE 4

FeQ™ ECL Substrate Kit (Cat#226).



Copyright ©2024 Genuin Biotechnologies LLC

Western blotting analysis using anti-Lysine demethylase 1B antibody (Cat#62155). Lysine demethylase 1B expression in wild type (WT) and Lysine demethylase 1B shRNA knockdown (KD) HeLa cells with 30  $\mu$ g of total cell lysates.  $\beta$ -Tubulin serves as a loading control. The blot was incubated with anti-Lysine demethylase 1B antibody (Cat#62155, 1:5,000) and HRP-conjugated goat anti-rabbit secondary antibody (Cat#201, 1:20,000) respectively. Image was developed using FeQ™ ECL Substrate Kit (Cat#226).

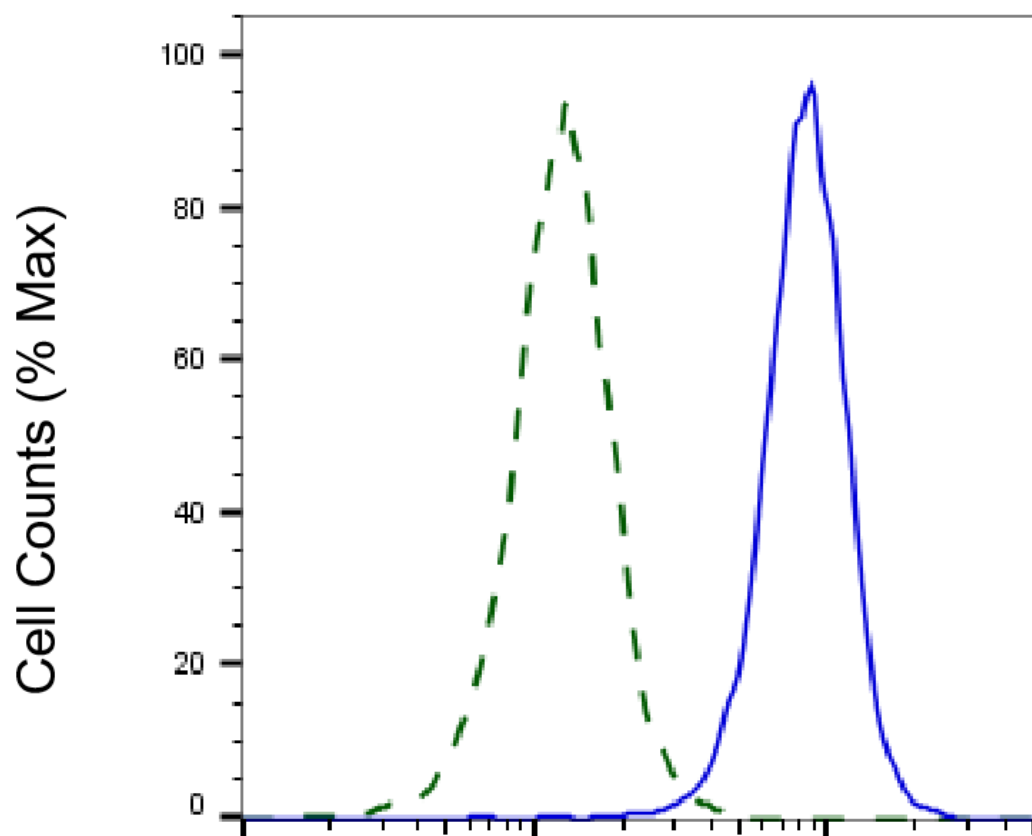
### SUPPORT

SUPPORT@GENUINBIOTECH.COM  
TEL: +1-540-855-7041

### ORDERS

SALES@GENUINBIOTECH.COM  
FAX: +1-540-855-7041

[WWW.GENUINBIOTECH.COM](http://WWW.GENUINBIOTECH.COM)



Copyright ©2025 Genuin Biotechnologies LLC

## Lysine demethylase 1B-Alexa Fluor® 647

Validation of Lysine demethylase 1B knockdown using flow cytometry. Wild-type(WT, Blue) and knockdown(KD, Green) HeLa cells were stained with anti-Lysine demethylase 1B antibody (Cat#62155, 1:2,000) and analyzed using BD flow cytometer.