

KD-Validated Anti-Growth factor receptor bound protein 2 Recombinant Rabbit



Catalog #: 62157

Aliases

GRB2; Growth Factor Receptor Bound Protein 2; Growth Factor Receptor-Bound Protein 2; NCKAP2; SH2/SH3 Adapter GRB2; Protein Ash; ASH; Epidermal Growth Factor Receptor-Binding Protein GRB2; Epididymis Secretory Sperm Binding Protein; Growth Factor Receptor-Bound Protein 3; Antibodyundant SRC Homology; Adapter Protein GRB2; EGFRBP-GRB2; MSTP084; Grb3-3; MST084; HT027

Background

Gene Name: GRB2

NCBI Gene Entry: [2885](#)

UniProt Entry: [P62993](#)

Application Information

Molecular Weight: Predicted, 25 kDa, observed, 25 kDa

Clonality: Rabbit monoclonal antibody

Clone ID: 23GB6275

Species Reactivity: Human, mouse, rat

Applications Tested: Western blotting (WB), flow cytometry (FCM), immunocytochemistry (IC)

Immunogen

A synthesized peptide derived from human GRB2

Isotype

Rabbit IgG

Storage Buffer

Supplied in PBS (pH 7.4) containing 50% glycerol, and 0.02% sodium azide.

Storage

Store at -20 °C for one year.

Recommended Dilutions

Western Blotting (WB): 1:1,000-1:5,000

Flow Cytometry (FCM): 1:2,000

Immunocytochemistry (IC): 1:100-1:1,000

SUPPORT

SUPPORT@GENUINBIOTECH.COM
TEL: +1-540-855-7041

ORDERS

SALES@GENUINBIOTECH.COM
FAX: +1-540-855-7041

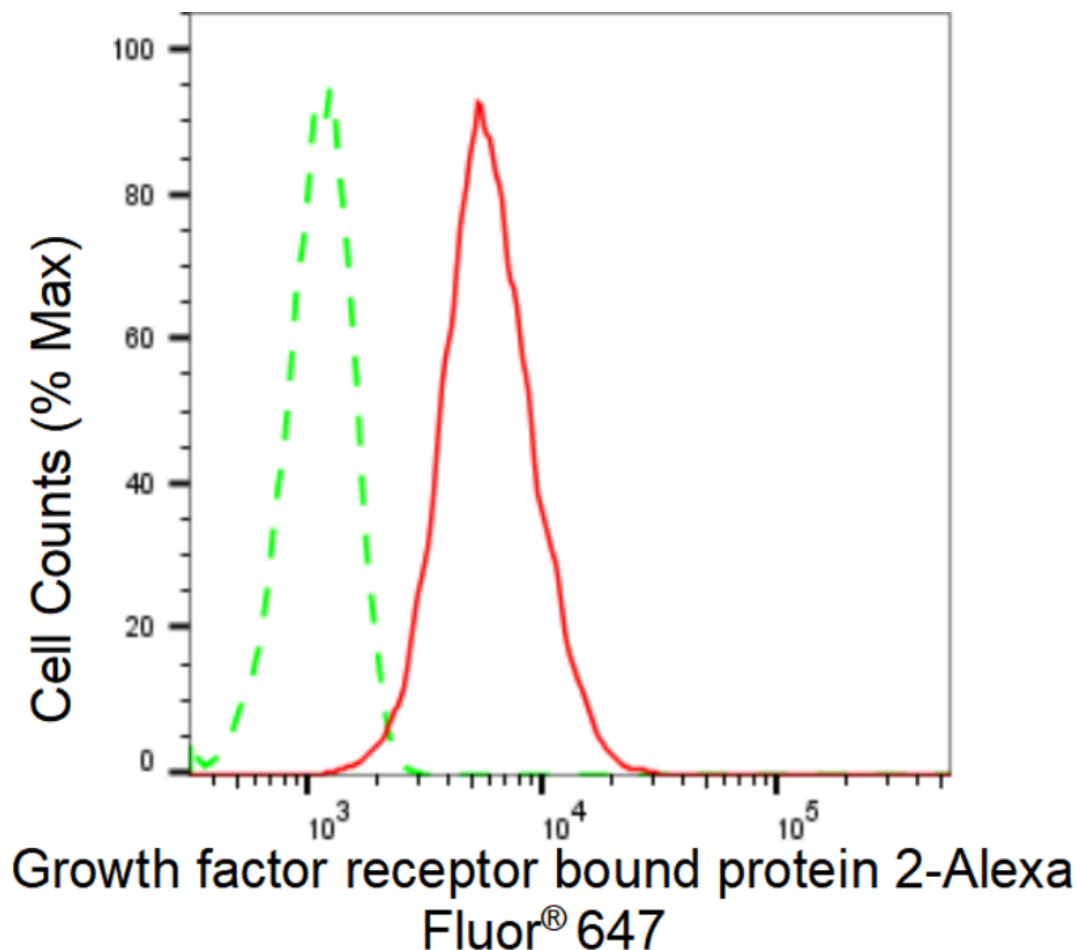
WWW.GENUINBIOTECH.COM

KD-Validated Anti-Growth factor receptor bound protein 2 Recombinant Rabbit

PAGE 2

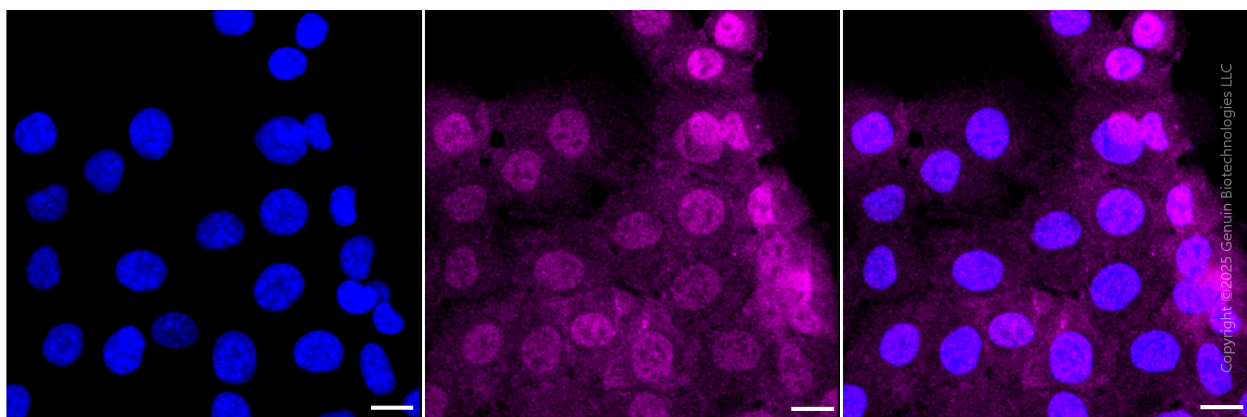
Note: This product is for research use only.

Validation Data



Copyright ©2024 Genuin Biotechnologies LLC

Flow cytometric analysis of Growth factor receptor bound protein 2 expression in HT-1080 cells using Growth factor receptor bound protein 2 antibody (Cat#62157, 1:2,000). Green, isotype control; red, Growth factor receptor bound protein 2.



Immunocytochemical staining of HT-1080 cells with anti-Growth factor receptor bound protein 2

SUPPORT

SUPPORT@GENUINBIOTECH.COM
TEL: +1-540-855-7041

ORDERS

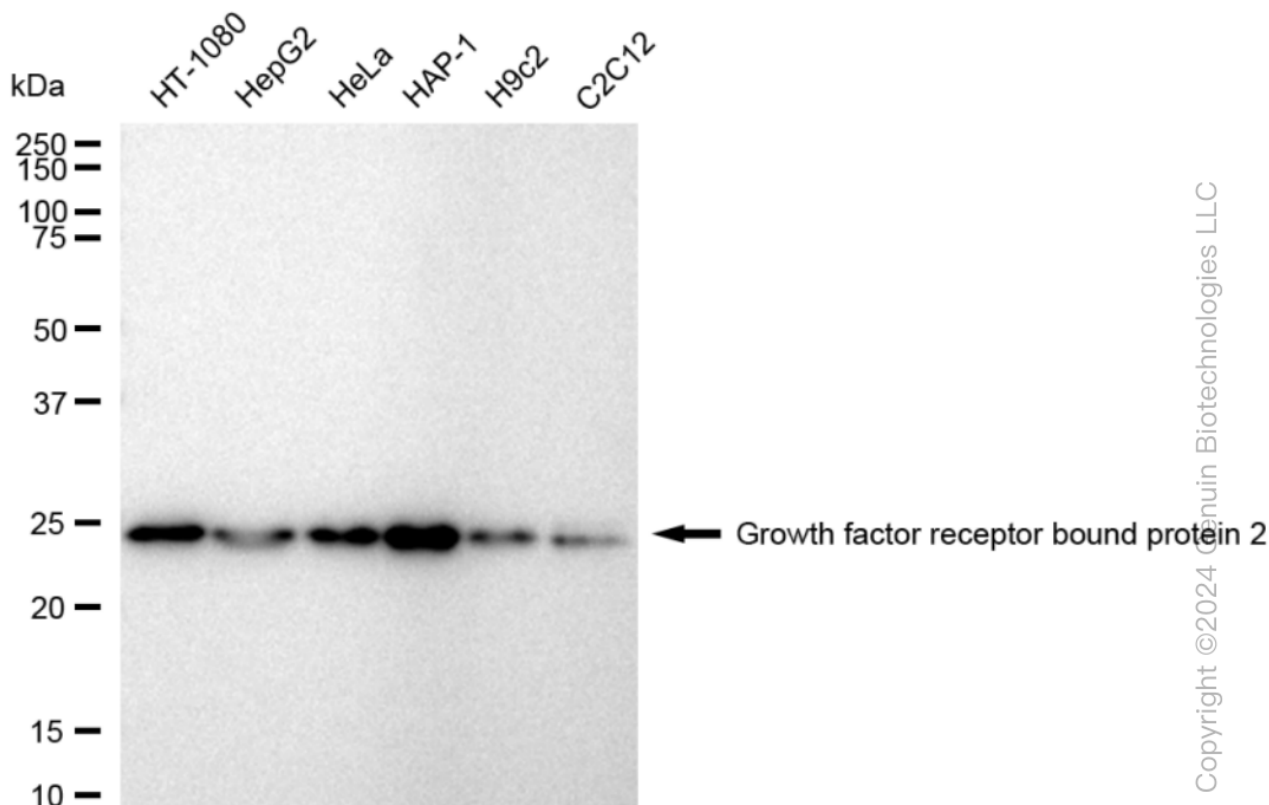
SALES@GENUINBIOTECH.COM
FAX: +1-540-855-7041

WWW.GENUINBIOTECH.COM

KD-Validated Anti-Growth factor receptor bound protein 2 Recombinant Rabbit

PAGE 3

antibody (Cat #62157, 1:1,000) . Nuclei were stained blue with DAPI; Growth factor receptor bound protein 2 was stained magenta with Alexa Fluor® 647. Images were taken using Leica stellaris 5. Protein abundance based on laser Intensity and smart gain: Medium. Scale bar, 20 μ m.



Western blotting analysis using anti-Growth factor receptor bound protein 2 antibody (Cat#62157). Total cell lysates (30 μ g) from various cell lines were loaded and separated by SDS-PAGE. The blot was incubated with anti-Growth factor receptor bound protein 2 antibody (Cat#62157, 1:5,000) and HRP-conjugated goat anti-rabbit secondary antibody (Cat#201, 1:20,000) respectively. Image was developed using FeQ™ ECL Substrate Kit (Cat#226).

SUPPORT

SUPPORT@GENUINBIOTECH.COM
TEL: +1-540-855-7041

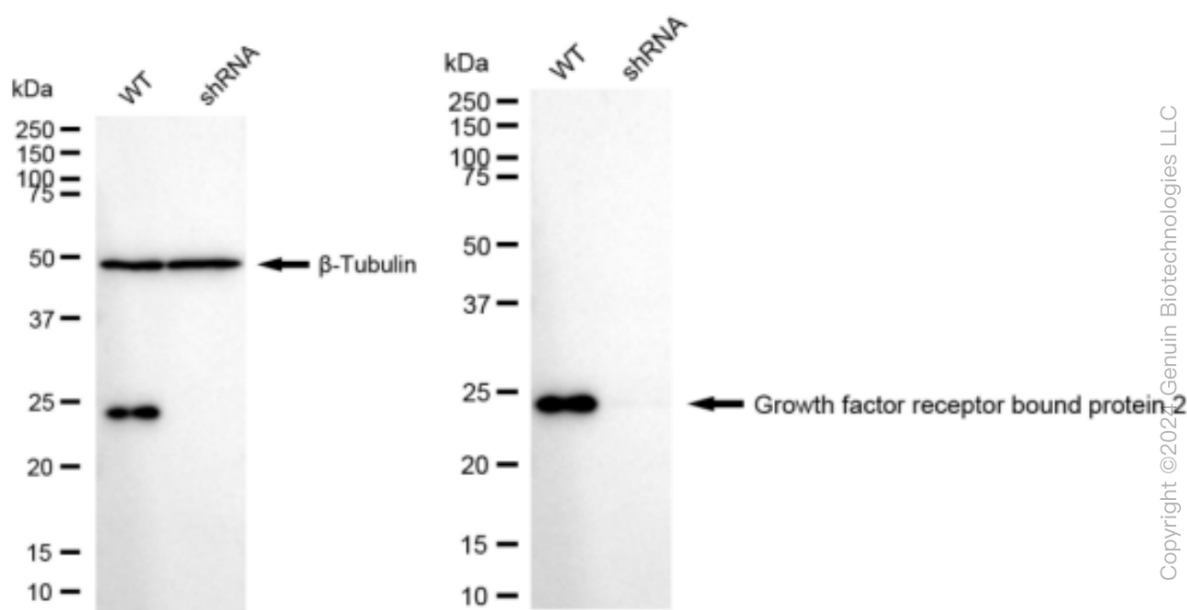
ORDERS

SALES@GENUINBIOTECH.COM
FAX: +1-540-855-7041

WWW.GENUINBIOTECH.COM

KD-Validated Anti-Growth factor receptor bound protein 2 Recombinant Rabbit

PAGE 4



Copyright ©2022 Genuin Biotechnologies LLC

Western blotting analysis using anti-Growth factor receptor bound protein 2 antibody (Cat#62157). Growth factor receptor bound protein 2 expression in wild type (WT) and Growth factor receptor bound protein 2 shRNA knockdown (KD) HeLa cells with 30 μ g of total cell lysates. β -Tubulin serves as a loading control. The blot was incubated with anti-Growth factor receptor bound protein 2 antibody (Cat#62157, 1:5,000) and HRP-conjugated goat anti-rabbit secondary antibody (Cat#201, 1:20,000) respectively. Image was developed using FeQ™ ECL Substrate Kit (Cat#226).

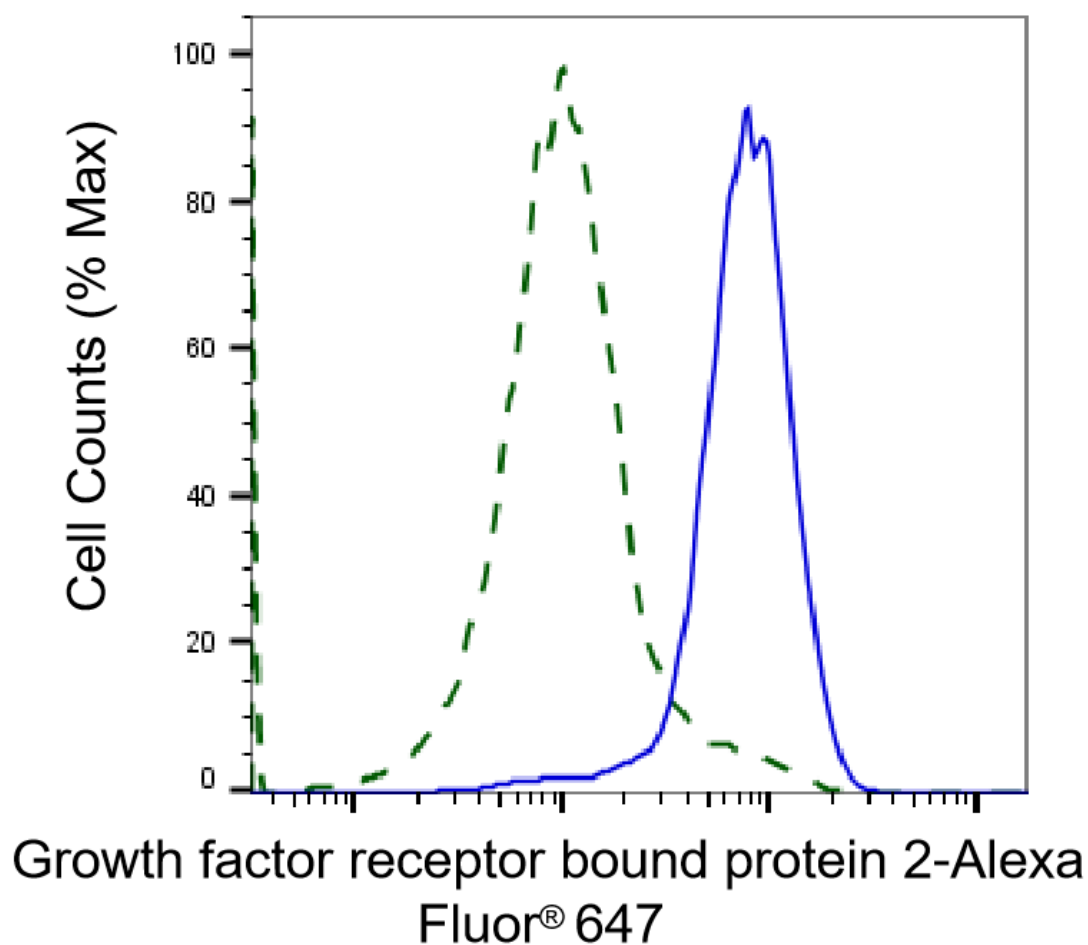
SUPPORT

SUPPORT@GENUINBIOTECH.COM
TEL: +1-540-855-7041

ORDERS

SALES@GENUINBIOTECH.COM
FAX: +1-540-855-7041

WWW.GENUINBIOTECH.COM



Copyright ©2025 Genuin Biotechnologies LLC

Validation of Growth factor receptor bound protein 2 knockdown using flow cytometry. Wild-type(WT, Blue) and knockdown(KD, Green) HeLa cells were stained with anti-Growth factor receptor bound protein 2 antibody (Cat#62157, 1:2,000) and analyzed using BD flow cytometer.