

# KD-Validated Anti-Caspase 6 Recombinant Rabbit Monoclonal Antibody



**Catalog #: 62176**

## Aliases

CASP6; Caspase 6; CSP-6; MCH2; Caspase-6; Caspase 6, Apoptosis-Related Cysteine Peptidase; Caspase 6, Apoptosis-Related Cysteine Protease; Mammalian Ced-3 Homologue; EC 3.4.22.59; Apoptotic Protease MCH-2; Apoptotic Protease Mch-2; CASPASE-6; EC 3.4.22; CASP-6

## Background

Gene Name: CASP6

NCBI Gene Entry: [839](#)

UniProt Entry: [P55212](#)

## Application Information

Molecular Weight: Predicted, 33 kDa, observed, 34 kDa

Clonality: Rabbit monoclonal antibody

Clone ID: 23GB1225

Species Reactivity: Human, mouse, rat

Applications Tested: Western blotting (WB), flow cytometry (FCM), immunocytochemistry (IC)

## Immunogen

A synthesized peptide derived from human Caspase-6

## Isotype

Rabbit IgG

## Storage Buffer

Supplied in PBS (pH 7.4) containing 50% glycerol, and 0.02% sodium azide.

## Storage

Store at -20 °C for one year.

## Recommended Dilutions

Western Blotting (WB): 1:1,000-1:5,000

Flow Cytometry (FCM): 1:2,000

Immunocytochemistry (IC): 1:100-1:1,000

**Note:** This product is for research use only.

---

### SUPPORT

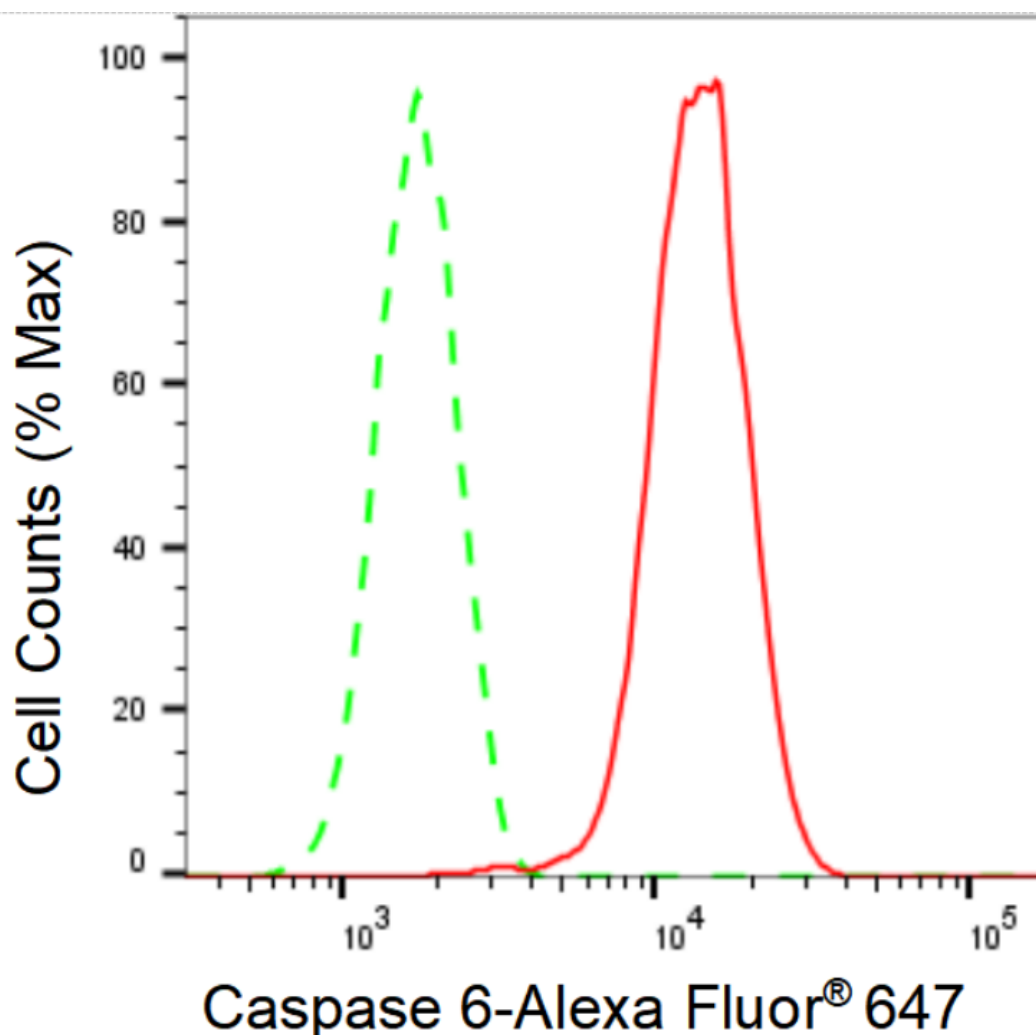
SUPPORT@GENUINBIOTECH.COM  
TEL: +1-540-855-7041

### ORDERS

SALES@GENUINBIOTECH.COM  
FAX: +1-540-855-7041

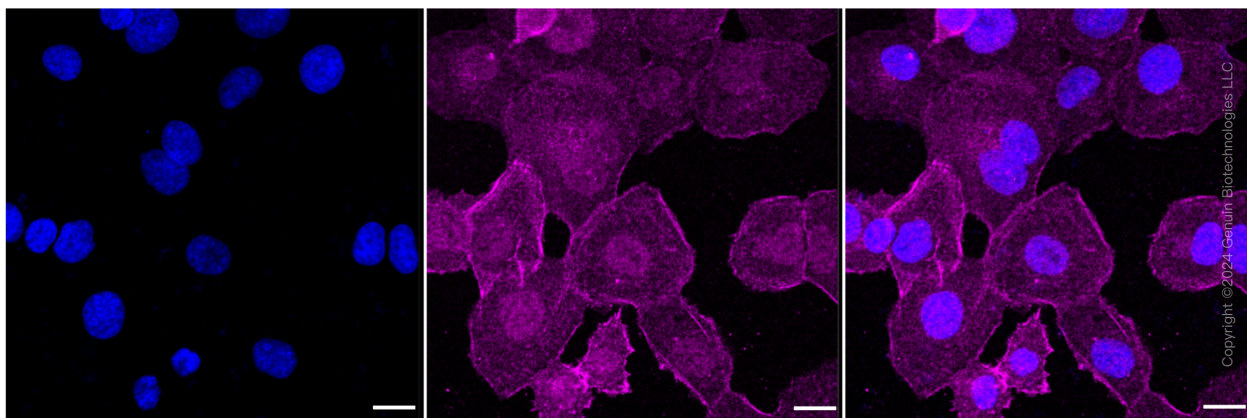
[WWW.GENUINBIOTECH.COM](http://WWW.GENUINBIOTECH.COM)

**Validation Data**



Copyright ©2024 Genuin Biotechnologies LLC

Flow cytometric analysis of Caspase 6 expression in HT-1080 cells using Caspase 6 antibody (Cat#62176, 1:2,000). Green, isotype control; red, Caspase 6.



Copyright ©2024 Genuin Biotechnologies LLC

Immunocytochemical staining of HT-1080 cells with Caspase 6 antibody (Cat#62176, 1:1,000).

**SUPPORT**

SUPPORT@GENUINBIOTECH.COM  
TEL: +1-540-855-7041

**ORDERS**

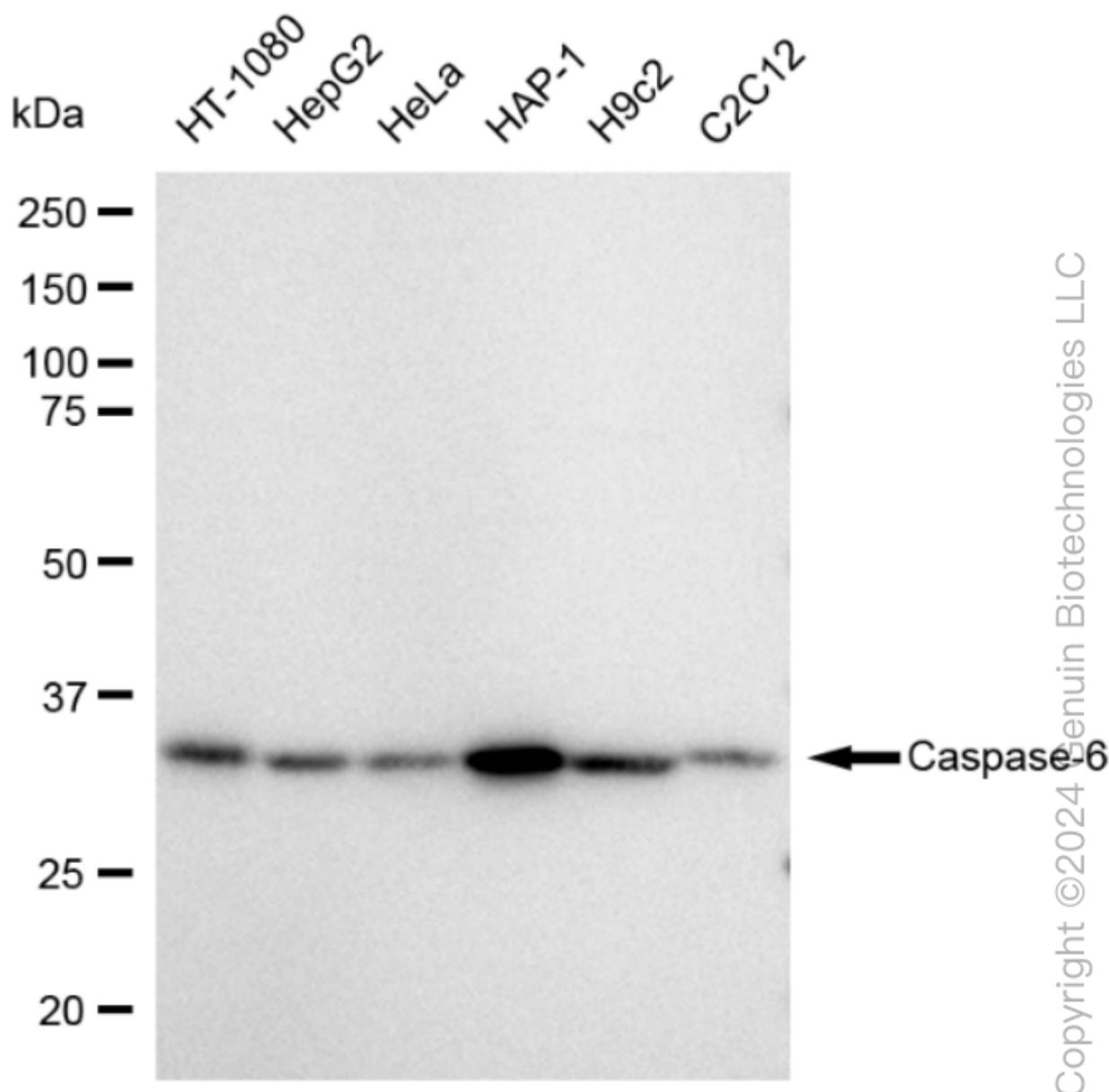
SALES@GENUINBIOTECH.COM  
FAX: +1-540-855-7041

**WWW.GENUINBIOTECH.COM**

## KD-Validated Anti-Caspase 6 Recombinant Rabbit Monoclonal Antibody

PAGE 3

Nuclei were stained blue with DAPI; Caspase 6 was stained magenta with Alexa Fluor® 647. Images were taken using Leica stellaris 5. Protein abundance based on laser Intensity and smart gain: Medium. Scale bar: 20  $\mu$ m.



Western blotting analysis using anti-Caspase 6 antibody (Cat#62176). Total cell lysates (30  $\mu$ g) from various cell lines were loaded and separated by SDS-PAGE. The blot was incubated with anti-Caspase 6 antibody (Cat#62176, 1:5,000) and HRP-conjugated goat anti-rabbit secondary antibody (Cat#201, 1:20,000) respectively. Image was developed using FeQ™ ECL Substrate Kit (Cat#226).

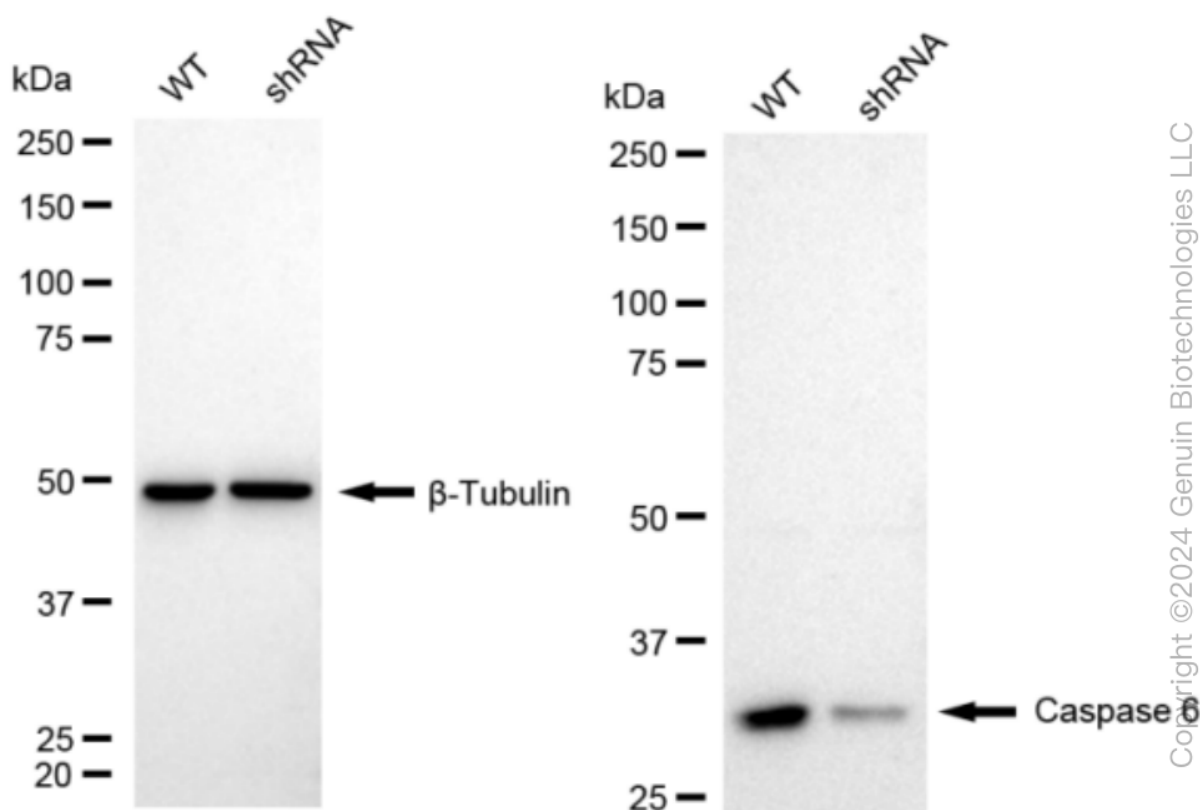
### SUPPORT

SUPPORT@GENUINBIOTECH.COM  
TEL: +1-540-855-7041

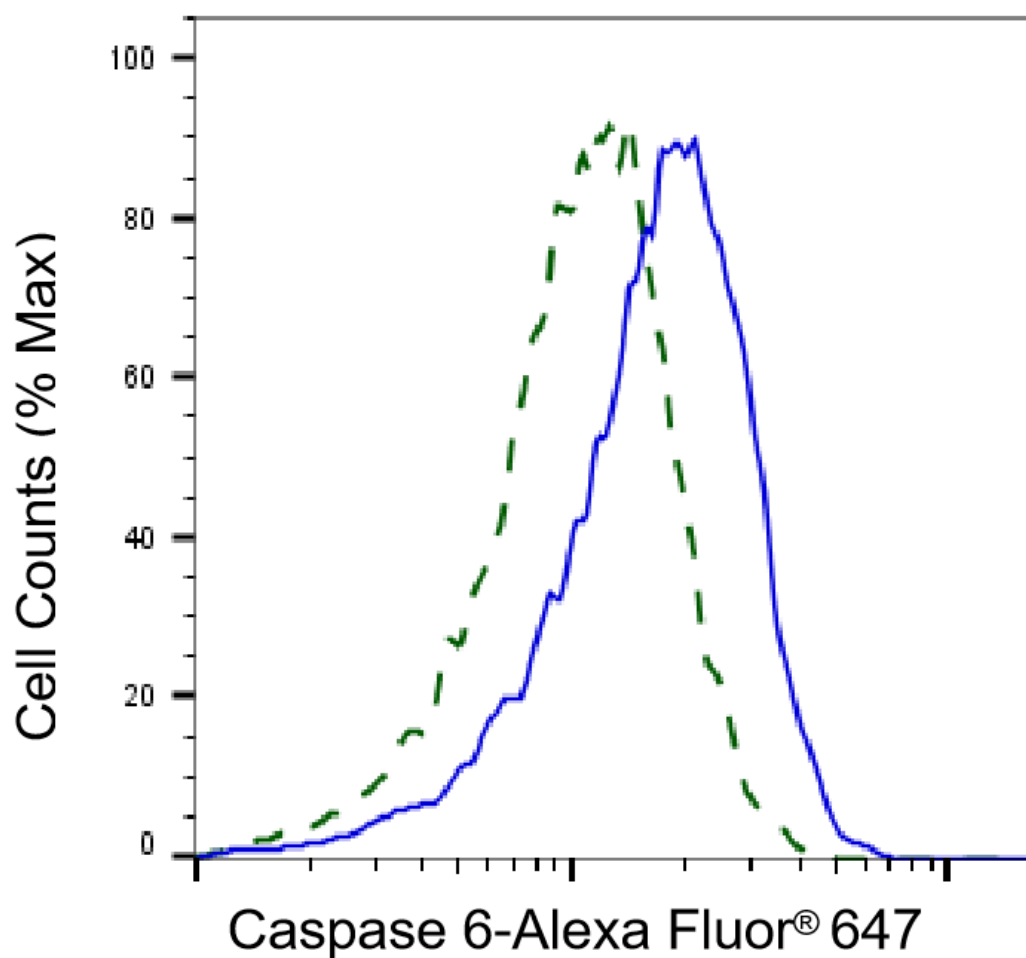
### ORDERS

SALES@GENUINBIOTECH.COM  
FAX: +1-540-855-7041

WWW.GENUINBIOTECH.COM



Western blotting analysis using anti-caspase 6 antibody (Cat#62176). Caspase 6 expression in wild-type (WT) and caspase 6 (CASP6) shRNA knockdown (KD) C2C12 cells with 20  $\mu$ g of total cell lysates.  $\beta$ -Tubulin serves as a loading control. The blot was incubated with anti-caspase 6 antibody (Cat#62176, 1:5,000) and HRP-conjugated goat anti-rabbit secondary antibody (Cat#201, 1:20,000) respectively. Image was developed using NaQ<sup>TM</sup> ECL Substrate Kit (Cat#716).



Copyright ©2025 Genuin Biotechnologies LLC

Validation of Caspase 6 knockdown using flow cytometry. Wild-type(WT, Blue) and knockdown(KD, Green) C2C12 cells were stained with anti-Caspase 6 antibody (Cat#62176, 1:2,000) and analyzed using BD flow cytometer.