

# KD-Validated Anti-HIF1AN Recombinant Rabbit Monoclonal Antibody



**Catalog #: 62181**

## Aliases

HIF1AN; Hypoxia Inducible Factor 1 Subunit Alpha Inhibitor; FIH1; Hypoxia-Inducible Factor Asparagine Hydroxylase; Hypoxia-Inducible Factor 1-Alpha Inhibitor; Peptide-Aspartate Beta-Dioxygenase; Factor Inhibiting HIF-1; FLJ20615; FLJ22027; FIH-1; Hypoxia Inducible Factor 1 Alpha Subunit Inhibitor; Factor Inhibiting HIF1; DKFZp762F1811; DKFZP762F1811; EC 1.14.11.30; EC 1.14.11.N4

## Background

Gene Name: HIF1AN

NCBI Gene Entry: [55662](#)

UniProt Entry: [Q9NWT6](#)

## Application Information

Molecular Weight: Predicted, 40 kDa, observed, 40 kDa

Clonality: Rabbit monoclonal antibody

Clone ID: 23GB6385

Species Reactivity: Human

Applications Tested: Western blotting (WB), flow cytometry (FCM), immunocytochemistry (IC)

## Immunogen

A synthesized peptide derived from human HIF1AN

## Isotype

Rabbit IgG

## Storage Buffer

Supplied in PBS (pH 7.4) containing 50% glycerol, and 0.02% sodium azide.

## Storage

Store at -20 °C for one year.

## Recommended Dilutions

Western Blotting (WB): 1:1,000-1:5,000

Flow Cytometry (FCM): 1:2,000

Immunocytochemistry (IC): 1:100-1:1,000

---

### SUPPORT

SUPPORT@GENUINBIOTECH.COM  
TEL: +1-540-855-7041

### ORDERS

SALES@GENUINBIOTECH.COM  
FAX: +1-540-855-7041

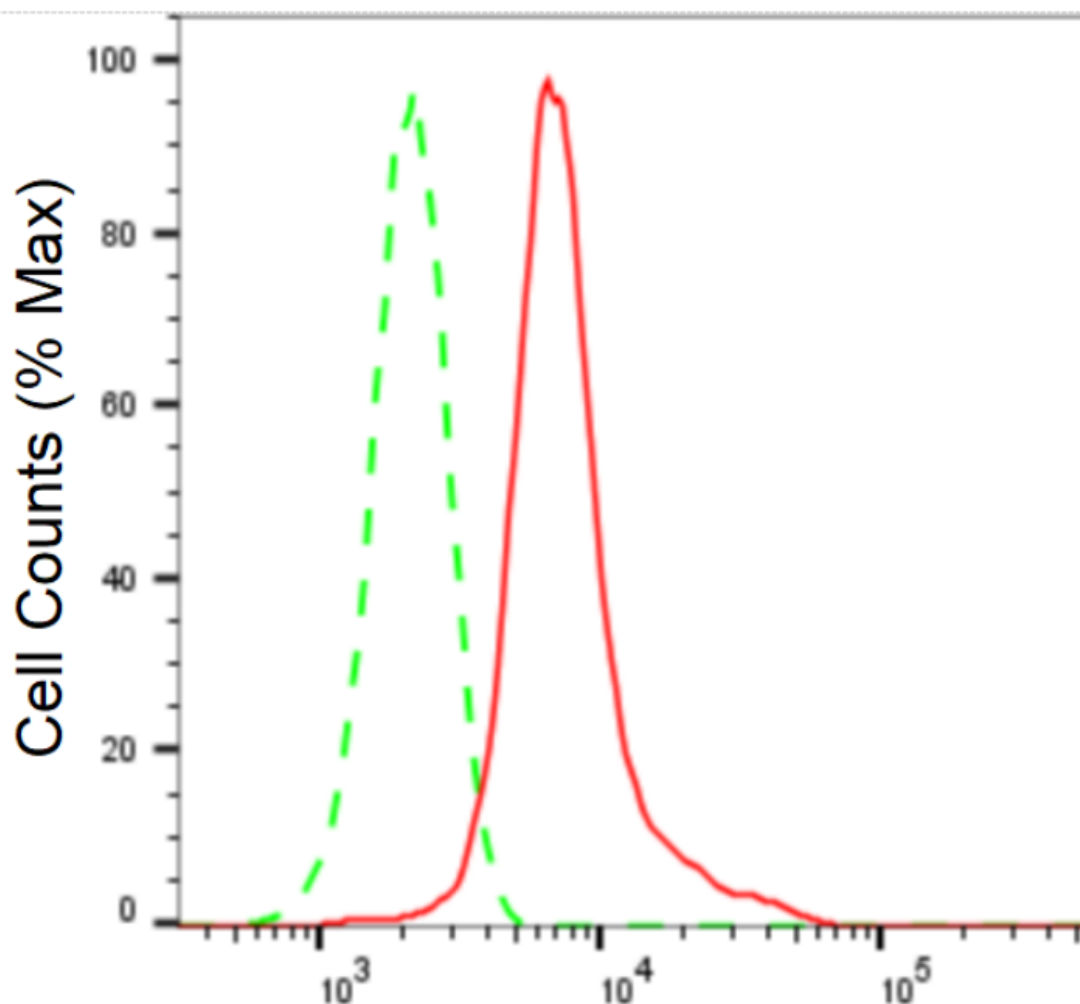
[WWW.GENUINBIOTECH.COM](http://WWW.GENUINBIOTECH.COM)

## KD-Validated Anti-HIF1AN Recombinant Rabbit Monoclonal Antibody

PAGE 2

**Note:** This product is for research use only.

### Validation Data



Copyright ©2024 Genuin Biotechnologies LLC

### HIF1AN-Alexa Fluor® 647

Flow cytometric analysis of HIF1AN expression in HeLa cells using HIF1AN antibody (Cat#62181, 1:2,000). GrHIF1ANotype control; red, HIF1AN.

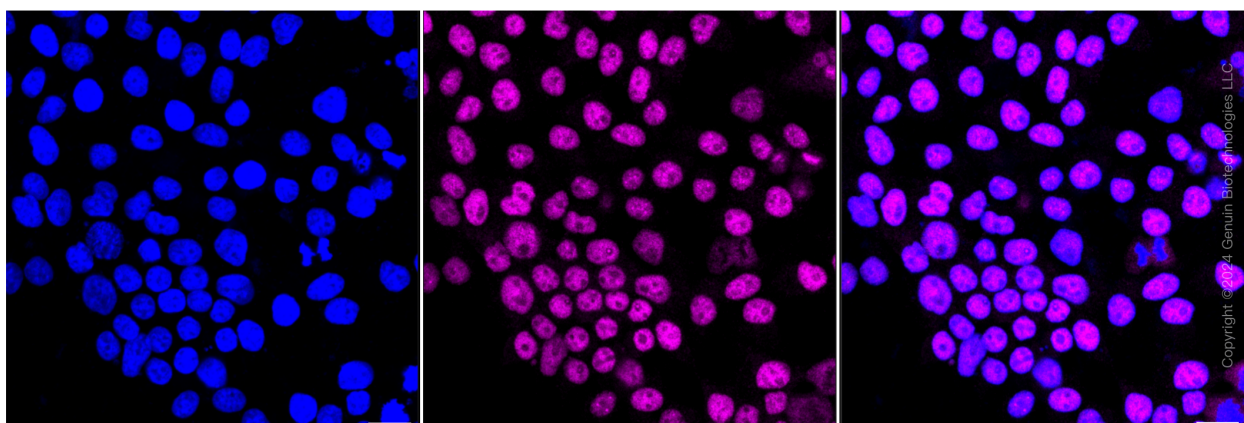
#### SUPPORT

SUPPORT@GENUINBIOTECH.COM  
TEL: +1-540-855-7041

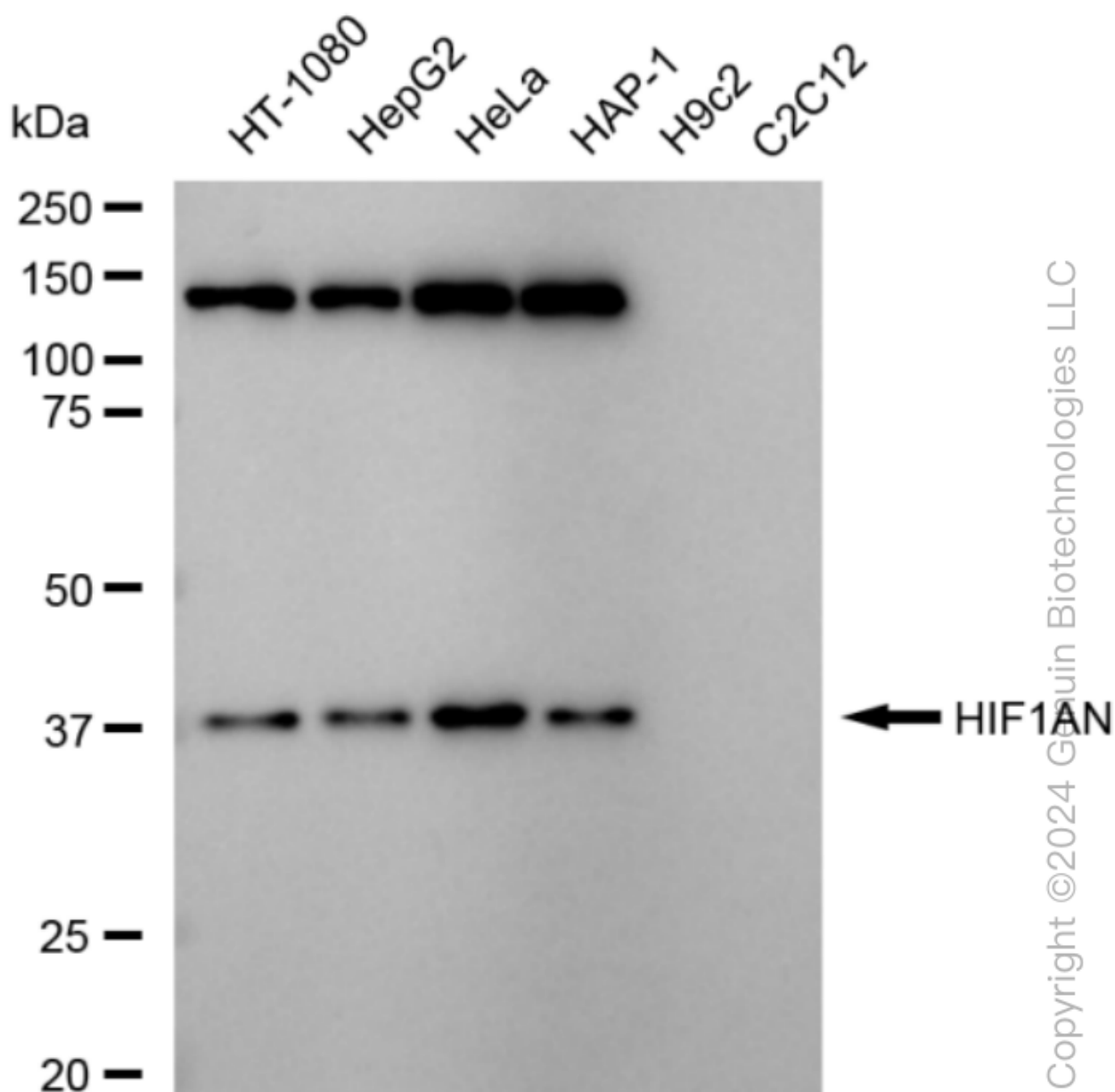
#### ORDERS

SALES@GENUINBIOTECH.COM  
FAX: +1-540-855-7041

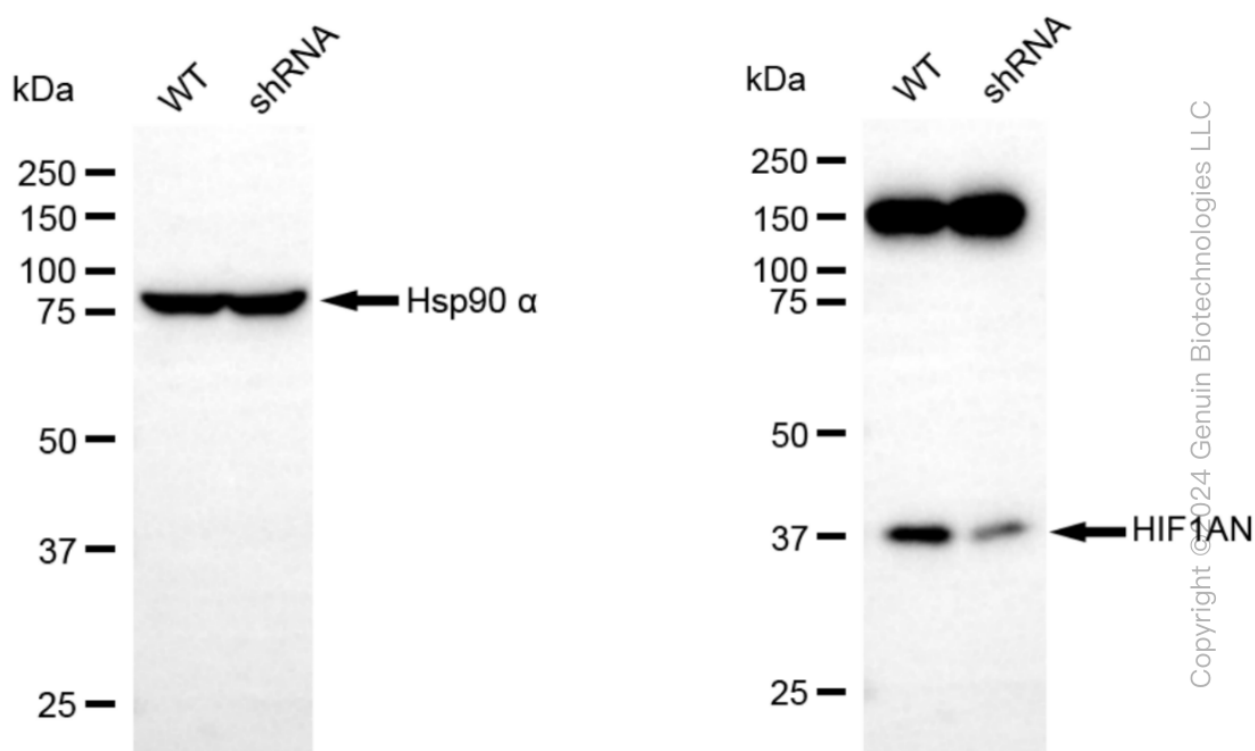
[WWW.GENUINBIOTECH.COM](http://WWW.GENUINBIOTECH.COM)



Immunocytochemical staining of HeLa cells with anti-HIF1AN antibody (Cat#62181, 1:1,000). Nuclei were stained blue with DAPI; HIF1AN was stained magenta with Alexa Fluor® 647. Images were taken using Leica stellaris 5. Protein abundance based on laser Intensity and smart gain: High. Scale bar: 20  $\mu$ m.



Western blotting analysis using anti-HIF1AN antibody (Cat#62181). Total cell lysates (30 µg) from various cell lines were loaded and separated by SDS-PAGE. The blot was incubated with anti-HIF1AN antibody (Cat#62181, 1:5,000) and HRP-conjugated goat anti-rabbit secondary antibody (Cat#201, 1:20,000) respectively. Image was developed using FeQ™ ECL Substrate Kit (Cat#226).



Western blotting analysis using anti-HIF1AN antibody (Cat#62181). HIF1AN expression in wild type (WT) and HIF1AN shRNA knockdown (KD) HeLa cells with 20 µg of total cell lysates. Hsp90 α serves as a loading control. The blot was incubated with anti-HIF1AN antibody (Cat#62181, 1:5,000) and HRP-conjugated goat anti-rabbit secondary antibody (Cat#201, 1:20,000) respectively. Image was developed using NaQ™ ECL Substrate Kit (Cat#716).