

# KD-Validated Anti-KHSRP Recombinant Rabbit Monoclonal Antibody



**Catalog #: 62192**

## Aliases

KHSRP; KH-Type Splicing Regulatory Protein; FUBP2; KSRP; FBP2; Far Upstream Element-Binding Protein; FUSE-Binding Protein; P75; Epididymis Secretory Sperm Binding Protein; KH Type-Splicing Regulatory Protein; FUSE Binding Protein 2

## Background

Gene Name: KHSRP

NCBI Gene Entry: [8570](#)

UniProt Entry: [Q92945](#)

## Application Information

Molecular Weight: Predicted, 73 kDa, observed, 73 kDa

Clonality: Rabbit monoclonal antibody

Clone ID: 23GB6435

Species Reactivity: Human, mouse, rat

Applications Tested: Western blotting (WB), flow cytometry (FCM), immunocytochemistry (IC)

## Immunogen

A synthesized peptide derived from human KHSRP

## Isotype

Rabbit IgG

## Storage Buffer

Supplied in PBS (pH 7.4) containing 50% glycerol, and 0.02% sodium azide.

## Storage

Store at -20 °C for one year.

## Recommended Dilutions

Western Blotting (WB): 1:1,000-1:5,000

Immunocytochemistry (IC): 1:100-1:1,000

Flow Cytometry (FCM): 1:2,000

**Note:** This product is for research use only.

---

### SUPPORT

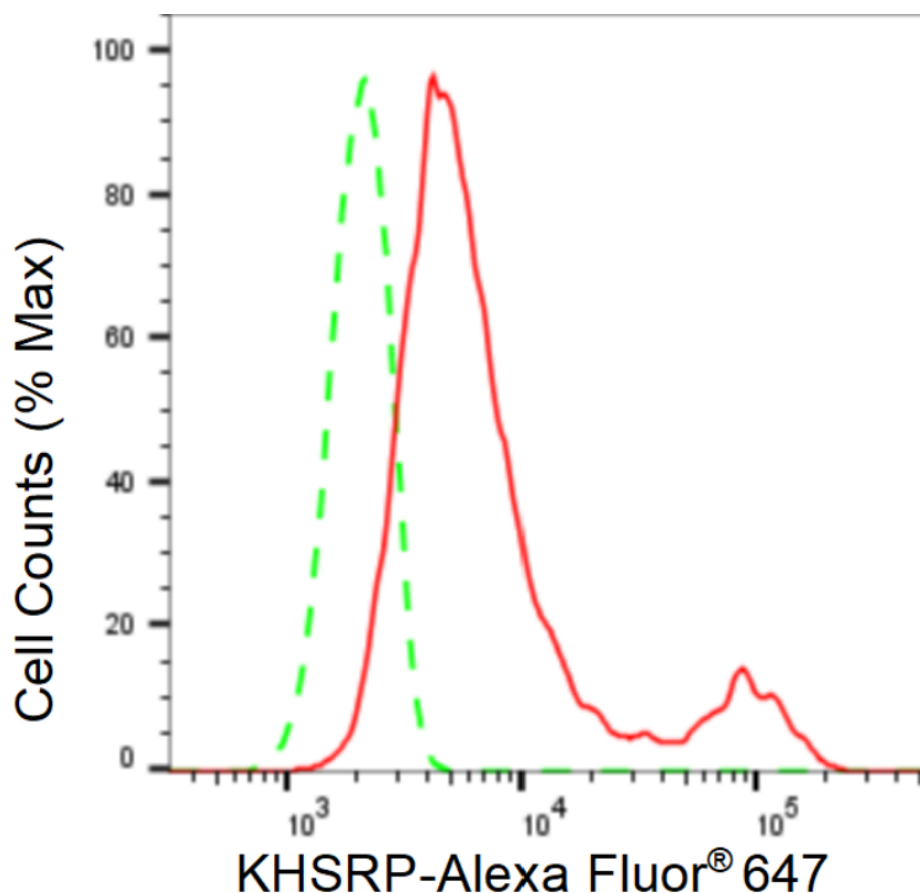
SUPPORT@GENUINBIOTECH.COM  
TEL: +1-540-855-7041

### ORDERS

SALES@GENUINBIOTECH.COM  
FAX: +1-540-855-7041

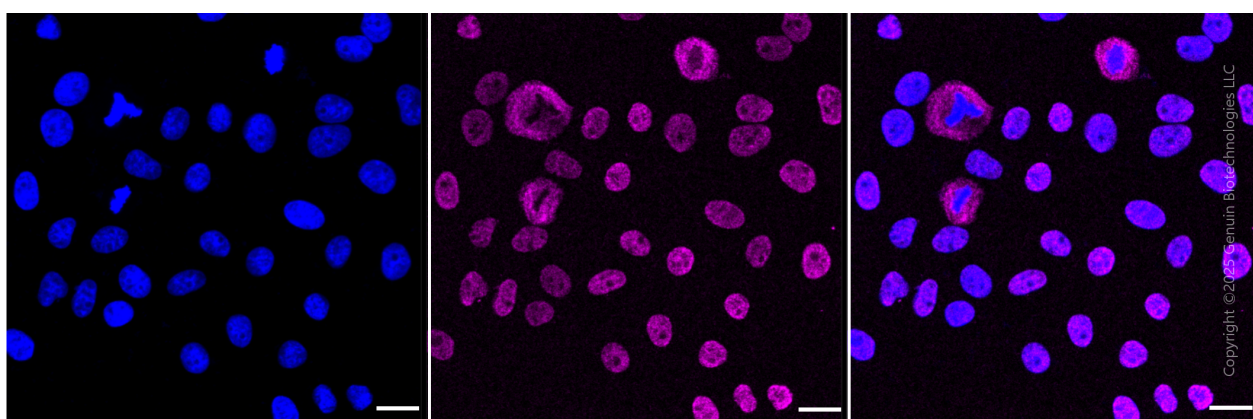
[WWW.GENUINBIOTECH.COM](http://WWW.GENUINBIOTECH.COM)

**Validation Data**



Copyright ©2024 Genuin Biotechnologies LLC

Flow cytometric analysis of KHSRP expression in HepG2 cells using KHSRP antibody (Cat#62192, 1:2,000). Green, isotype control; red, KHSRP.



Immunocytochemical staining of HepG2 cells with anti-KHSRP antibody (Cat #62192, 1:1,000) . Nuclei were stained blue with DAPI; KHSRP was stained magenta with Alexa Fluor® 647. Images were taken using Leica stellaris 5. Protein abundance based on laser Intensity and smart gain: Medium. Scale bar, 20  $\mu$ m.

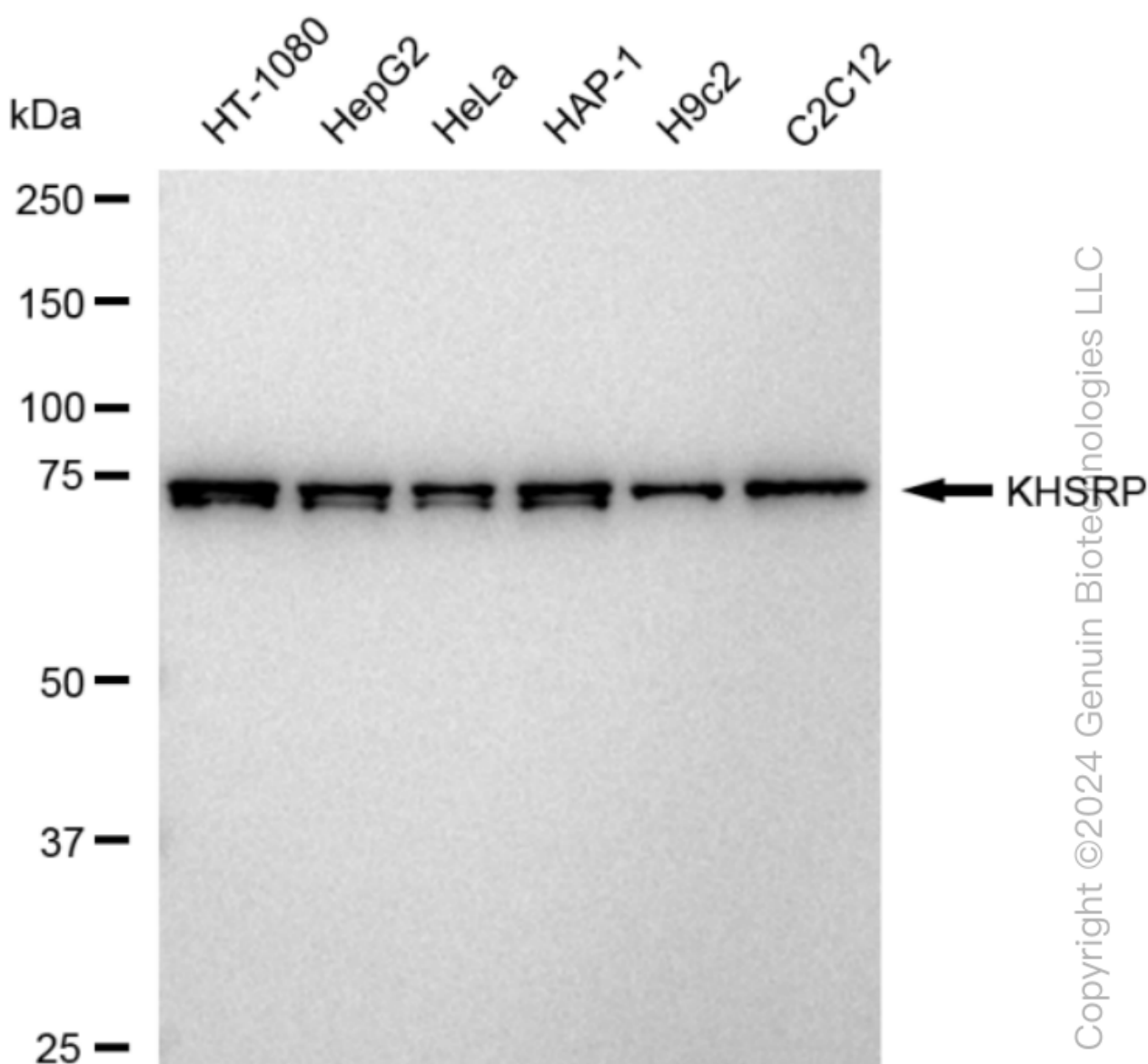
**SUPPORT**

SUPPORT@GENUINBIOTECH.COM  
TEL: +1-540-855-7041

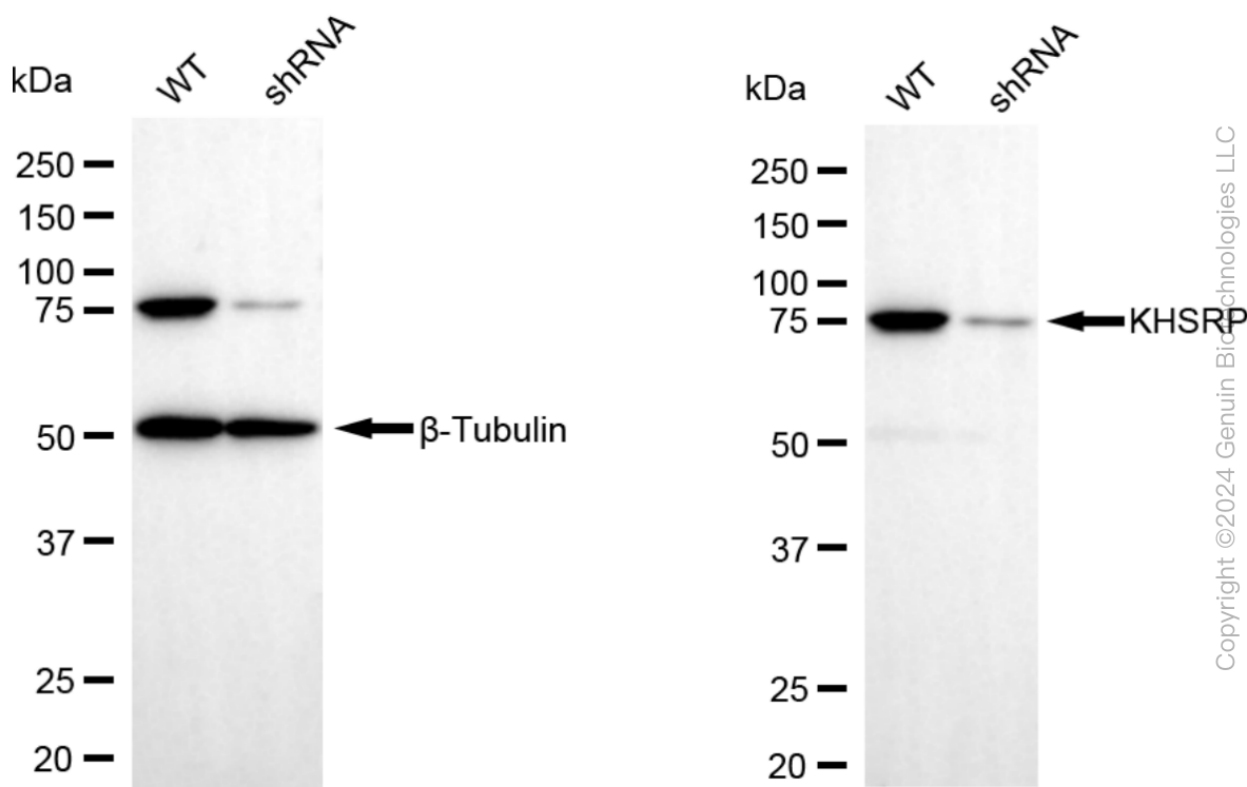
**ORDERS**

SALES@GENUINBIOTECH.COM  
FAX: +1-540-855-7041

**WWW.GENUINBIOTECH.COM**



Western blotting analysis using anti-KHSRP antibody (Cat#62192). Total cell lysates (30 µg) from various cell lines were loaded and separated by SDS-PAGE. The blot was incubated with anti-KHSRP antibody (Cat#62192, 1:5,000) and HRP-conjugated goat anti-rabbit secondary antibody (Cat#201, 1:20,000) respectively. Image was developed using FeQ™ ECL Substrate Kit (Cat#226).



Western blotting analysis using anti-KHSRP antibody (Cat#62192). KHSRP expression in wild type (WT) and KHSRP shRNA knockdown (KD) HeLa cells with 30 µg of total cell lysates. β-Tubulin serves as a loading control. The blot was incubated with anti-KHSRP antibody (Cat#62192, 1:5,000) and HRP-conjugated goat anti-rabbit secondary antibody (Cat#201, 1:20,000) respectively. Image was developed using FeQ™ ECL Substrate Kit (Cat#226).