

KD-Validated Anti-Keratin 17 Recombinant Rabbit Monoclonal Antibody



Catalog #: 62212

Aliases

KRT17; Keratin 17; Keratin, Type I Cytoskeletal 17; Keratin 17, Type I; Cytokeratin-17; CK-17; PCHC1; 39.1; K17; Keratin-17; PC2; PC

Background

Gene Name: KRT17

NCBI Gene Entry: [3872](#)

UniProt Entry: [Q04695](#)

Application Information

Molecular Weight: Predicted, 48 kDa, observed, 48 kDa

Clonality: Rabbit monoclonal antibody

Clone ID: 23GB6535

Species Reactivity: Human

Applications Tested: Western blotting (WB), flow cytometry (FCM), immunocytochemistry (IC)

Immunogen

A synthesized peptide derived from human Cytokeratin 17

Isotype

Rabbit IgG

Storage Buffer

Supplied in PBS (pH 7.4) containing 50% glycerol, and 0.02% sodium azide.

Storage

Store at -20 °C for one year.

Recommended Dilutions

Western Blotting (WB): 1:1,000-1:5,000

Flow Cytometry (FCM): 1:2,000

Immunocytochemistry (IC): 1:100-1:1,000

Note: This product is for research use only.

Validation Data

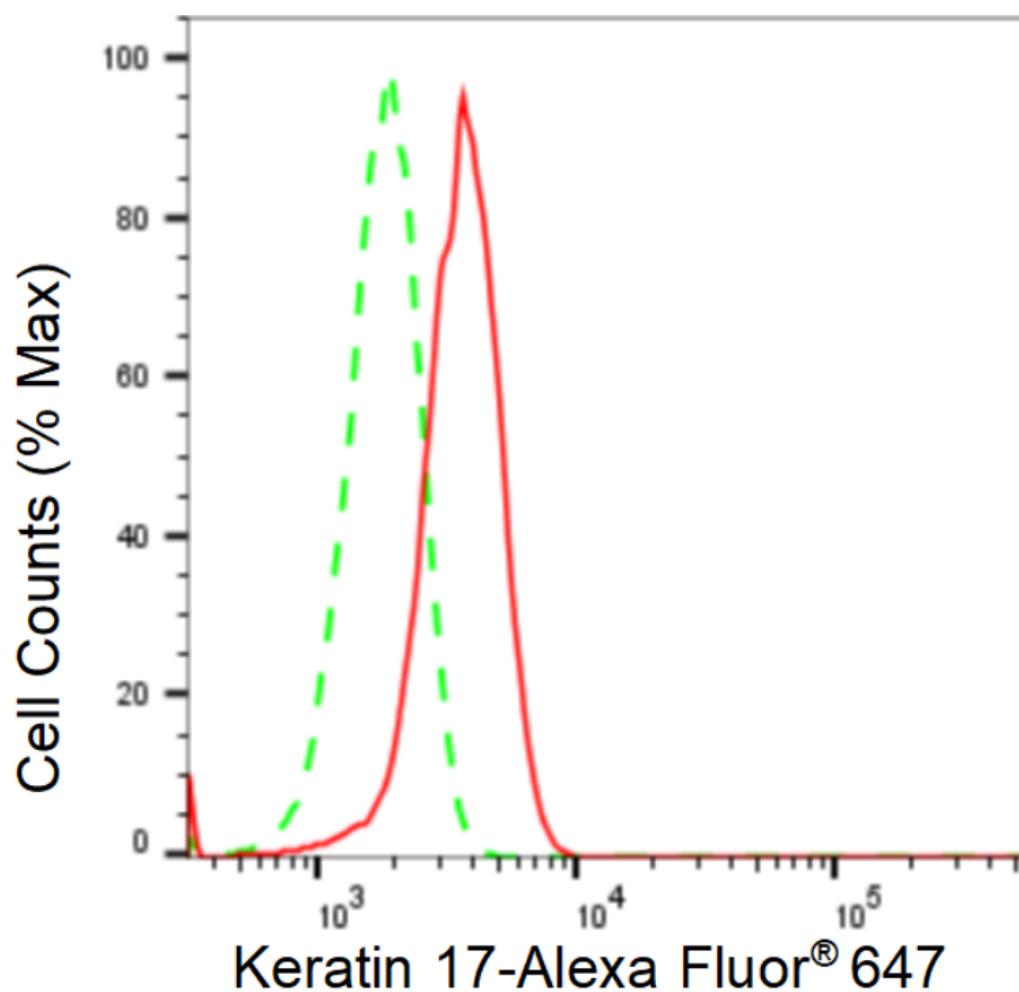
SUPPORT

SUPPORT@GENUINBIOTECH.COM
TEL: +1-540-855-7041

ORDERS

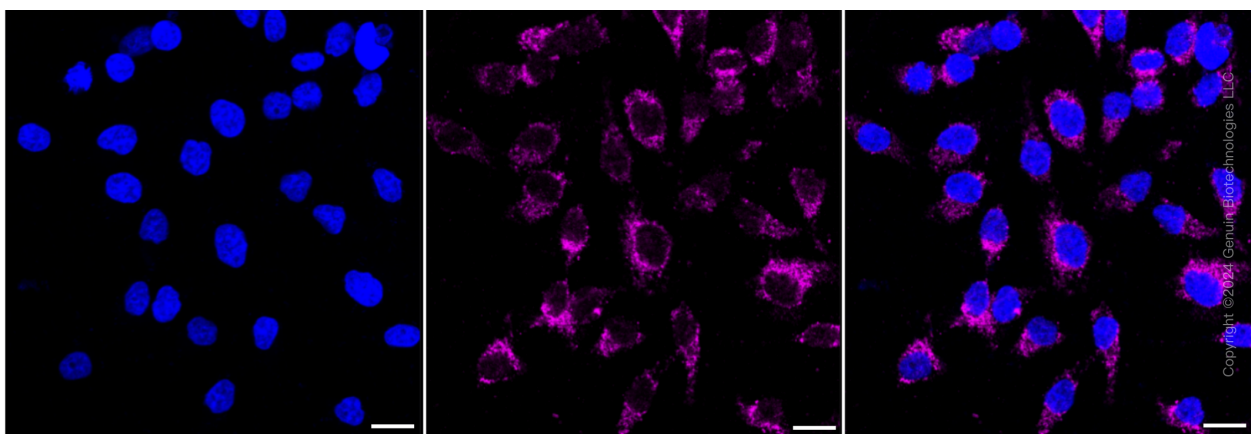
SALES@GENUINBIOTECH.COM
FAX: +1-540-855-7041

WWW.GENUINBIOTECH.COM



Copyright ©2024 Genuin Biotechnologies LLC

Flow cytometric analysis of Keratin 17 expression in HeLa cells using Keratin 17 antibody (Cat#62212, 1:2,000). Green, isotype control; red, Keratin 17.



Immunocytochemical staining of HeLa cells with anti-Keratin 17 antibody (Cat#62212, 1:1,000). Nuclei were stained blue with DAPI; Keratin 17 was stained magenta with Alexa Fluor® 647. Images were taken using Leica stellaris 5. Protein abundance based on laser Intensity and smart gain: Medium. Scale bar: 20 µm.

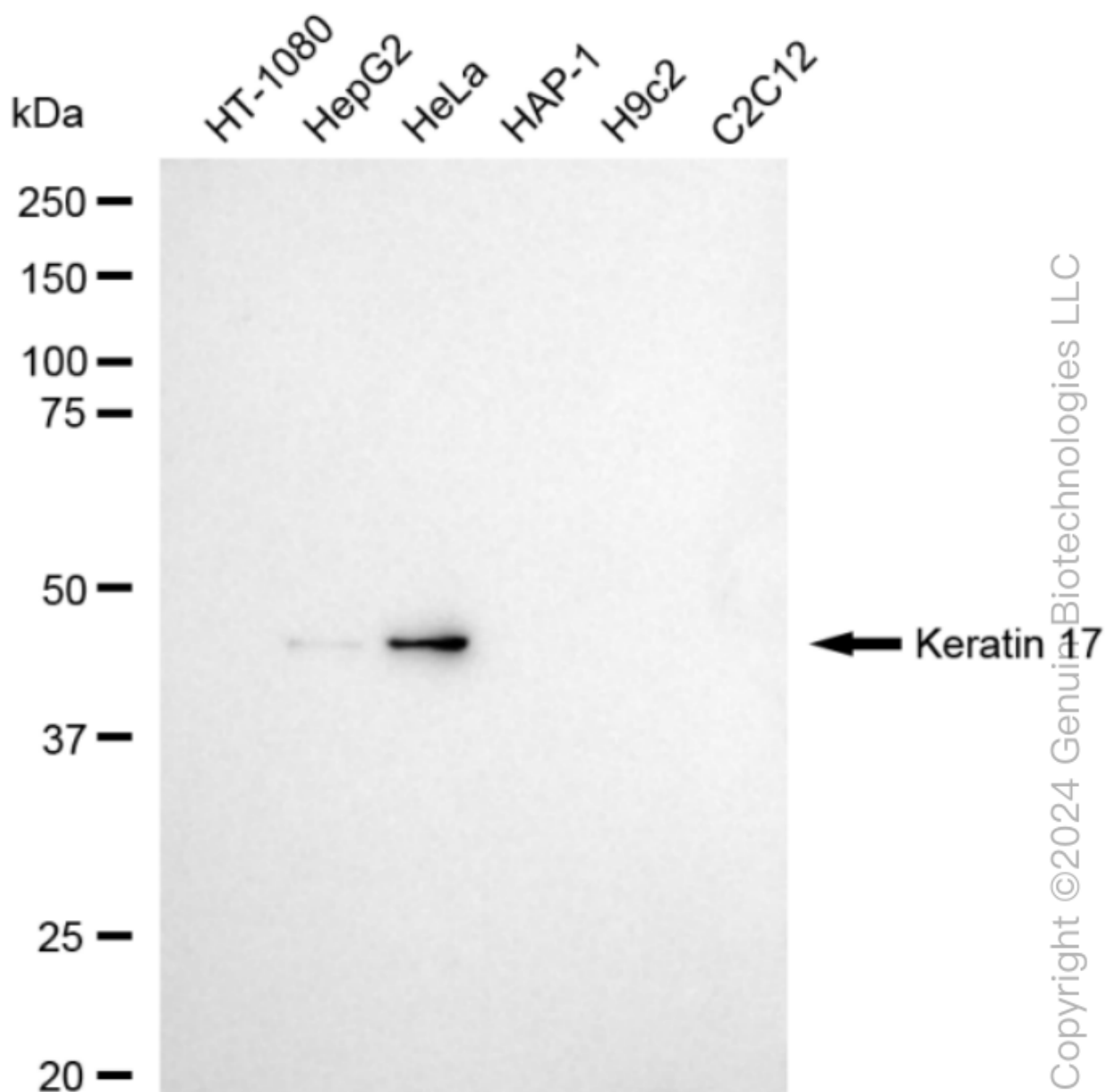
SUPPORT

SUPPORT@GENUINBIOTECH.COM
TEL: +1-540-855-7041

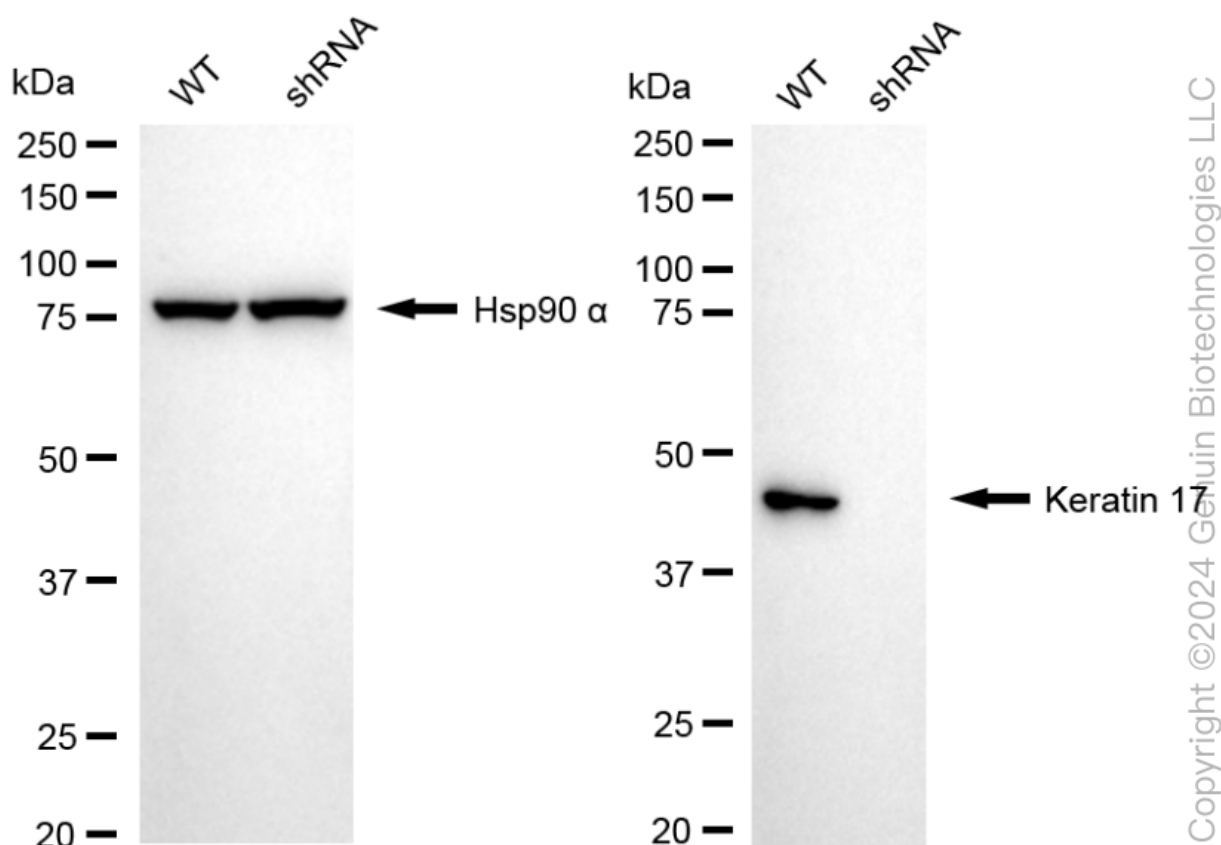
ORDERS

SALES@GENUINBIOTECH.COM
FAX: +1-540-855-7041

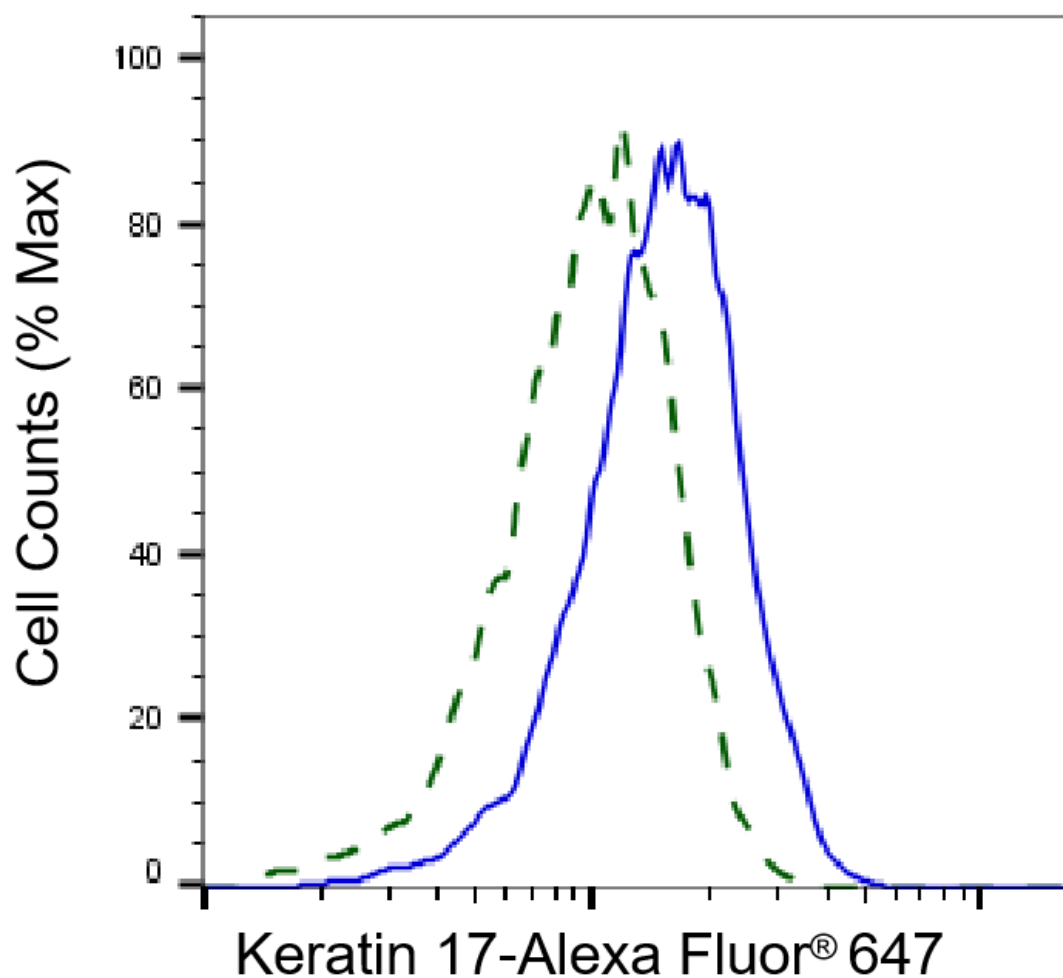
WWW.GENUINBIOTECH.COM



Western blotting analysis using anti-Keratin 17 antibody (Cat#62212). Total cell lysates (30 μ g) from various cell lines were loaded and separated by SDS-PAGE. The blot was incubated with anti-Keratin 17 antibody (Cat#62212, 1:5,000) and HRP-conjugated goat anti-rabbit secondary antibody (Cat#201, 1:20,000) respectively. Image was developed using FeQ™ ECL Substrate Kit (Cat#226).



Western blotting analysis using anti-Keratin 17 antibody (Cat#62212). Keratin 17 expression in wild type (WT) and Keratin 17 shRNA knockdown (KD) HeLa cells with 20 µg of total cell lysates. Hsp90 α serves as a loading control. The blot was incubated with anti-Keratin 17 antibody (Cat#62212, 1:5,000) and HRP-conjugated goat anti-rabbit secondary antibody (Cat#201, 1:20,000) respectively. Image was developed using NaQ™ ECL Substrate Kit (Cat#716).



Copyright ©2025 Genuin Biotechnologies LLC

Validation of Keratin 17 knockdown using flow cytometry. Wild-type(WT, Blue) and knockdown(KD, Green) HeLa cells were stained with anti-Keratin 17 antibody (Cat#62212, 1:2,000) and analyzed using BD flow cytometer.