

# KD-Validated Anti-Phospho-JunD (S255) Recombinant Rabbit Monoclonal Antibody



**Catalog #: 62216**

## Aliases

JUND; JunD Proto-Oncogene, AP-1 Transcription Factor Subunit; AP-1; Transcription Factor AP-1 Subunit JunD; Transcription Factor Jun-D; Transcription Factor JunD; Activator Protein 1; Jun D Proto-Oncogene; JunD-FL Isoform

## Background

Gene Name: JUND

NCBI Gene Entry: [3727](#)

UniProt Entry: [P17535](#)

## Application Information

Molecular Weight: Predicted, 35 kDa, observed, 38,42 kDa

Clonality: Rabbit monoclonal antibody

Clone ID: 23GB6555

Species Reactivity: Human, mouse, rat

Applications Tested: Western blotting (WB), flow cytometry (FCM), immunocytochemistry (IC)

## Immunogen

A synthesized peptide derived from human JunD

## Isotype

Rabbit IgG

## Storage Buffer

Supplied in PBS (pH 7.4) containing 50% glycerol, and 0.02% sodium azide.

## Storage

Store at -20 °C for one year.

## Recommended Dilutions

Western Blotting (WB): 1:1,000-1:5,000

Flow Cytometry (FCM): 1:2,000

Immunocytochemistry (IC): 1:100-1:1,000

**Note:** This product is for research use only.

---

### SUPPORT

SUPPORT@GENUINBIOTECH.COM  
TEL: +1-540-855-7041

### ORDERS

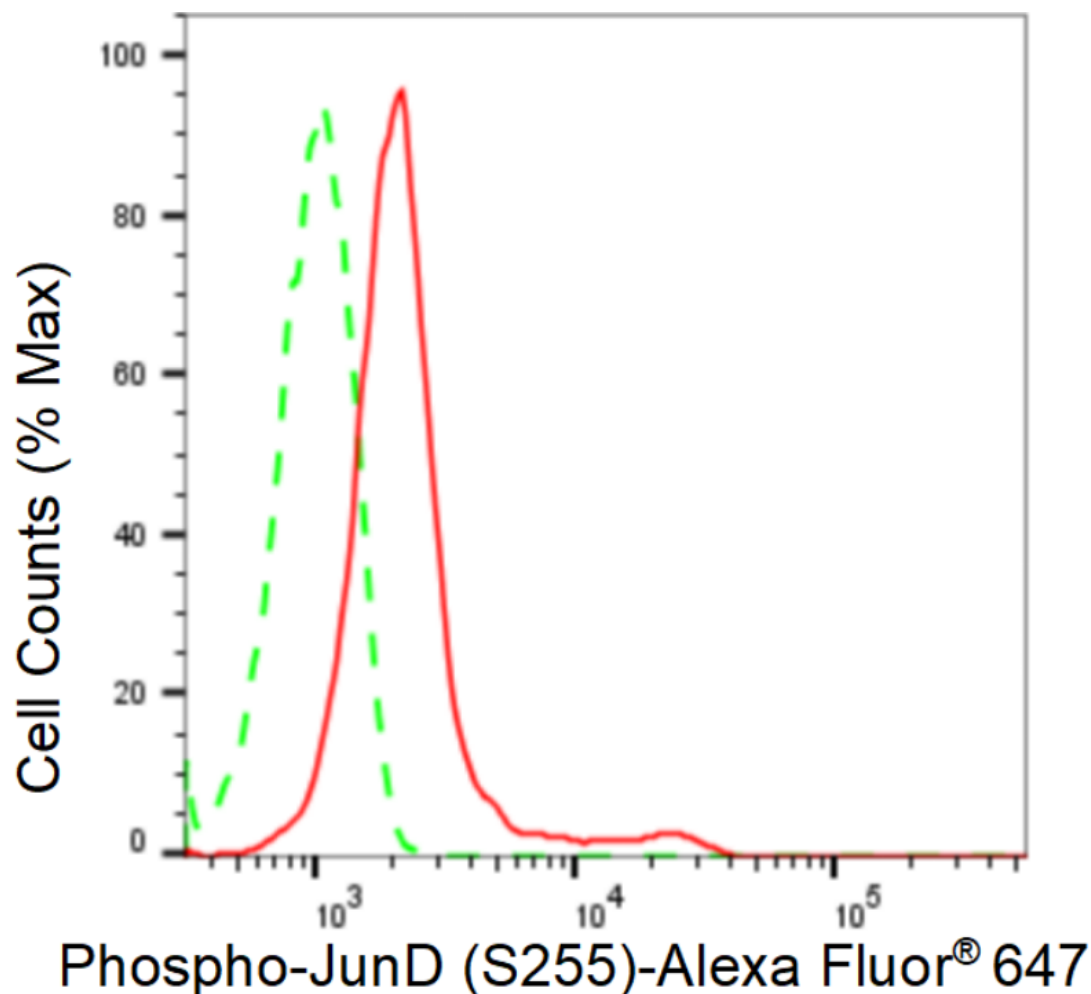
SALES@GENUINBIOTECH.COM  
FAX: +1-540-855-7041

[WWW.GENUINBIOTECH.COM](http://WWW.GENUINBIOTECH.COM)

# KD-Validated Anti-Phospho-JunD (S255) Recombinant Rabbit Monoclonal Antibody

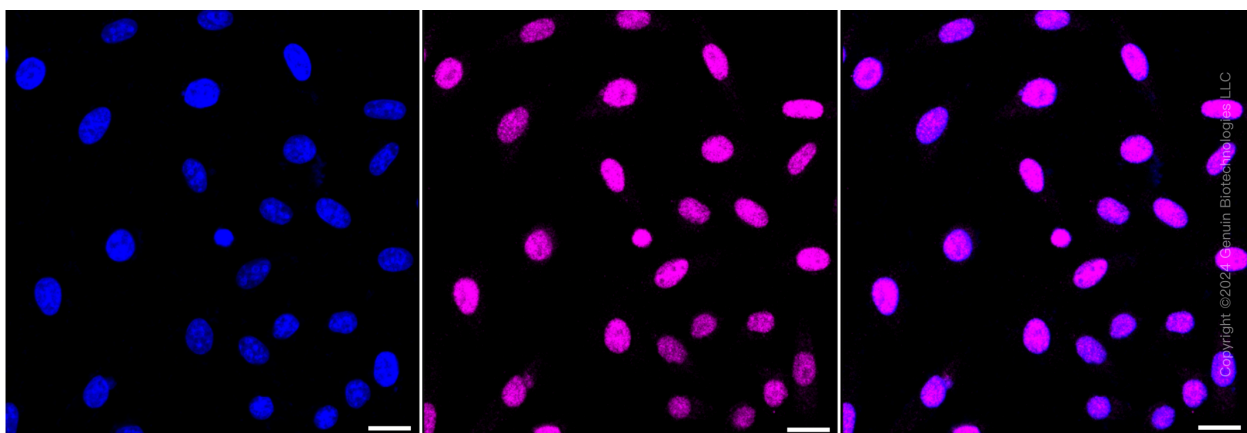
PAGE 2

## Validation Data



Copyright ©2024 Genuin Biotechnologies LLC

Flow cytometric analysis of Phospho-JunD (S255) expression in HepG2 cells using Phospho-JunD (S255) antibody (Cat#62216, 1:2,000). Green, isotype control; red, Phospho-JunD (S255).



Immunocytochemical staining of HepG2 cells with anti-Phospho-JunD (S255) antibody (Cat#62216, 1:1,000). Nuclei were stained blue with DAPI; Phospho-JunD (S255) was stained

### SUPPORT

SUPPORT@GENUINBIOTECH.COM  
TEL: +1-540-855-7041

### ORDERS

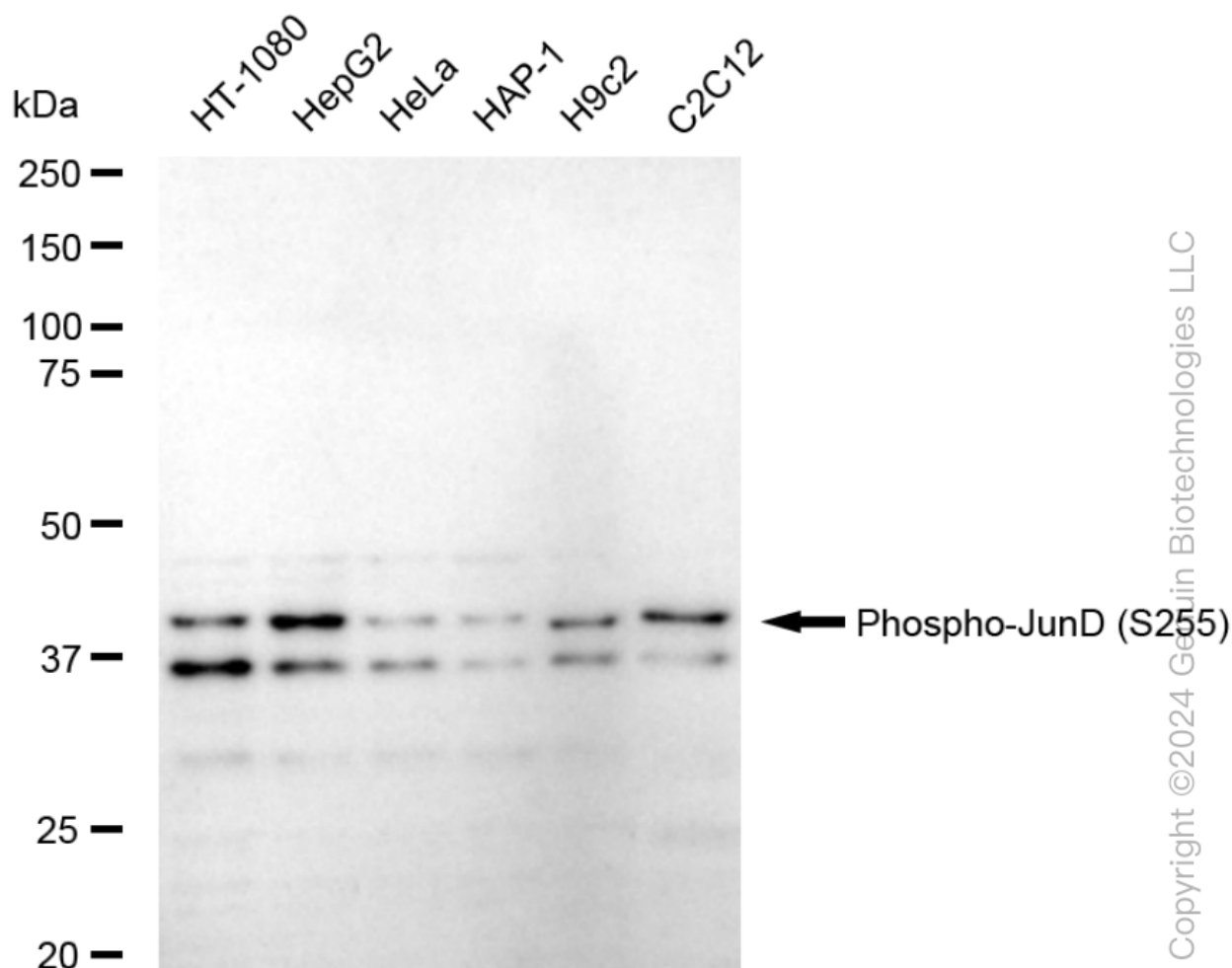
SALES@GENUINBIOTECH.COM  
FAX: +1-540-855-7041

WWW.GENUINBIOTECH.COM

## KD-Validated Anti-Phospho-JunD (S255) Recombinant Rabbit Monoclonal Antibody

PAGE 3

magenta with Alexa Fluor® 647. Images were taken using Leica stellaris 5. Protein abundance based on laser Intensity and smart gain: Medium. Scale bar: 20 µm.



Western blotting analysis using anti-Phospho-JunD (S255) antibody (Cat#62216). Total cell lysates (30 µg) from various cell lines were loaded and separated by SDS-PAGE. The blot was incubated with anti-Phospho-JunD (S255) antibody (Cat#62216, 1:5,000) and HRP-conjugated goat anti-rabbit secondary antibody (Cat#201, 1:20,000) respectively. Image was developed using FeQ™ ECL Substrate Kit (Cat#226).

### SUPPORT

SUPPORT@GENUINBIOTECH.COM  
TEL: +1-540-855-7041

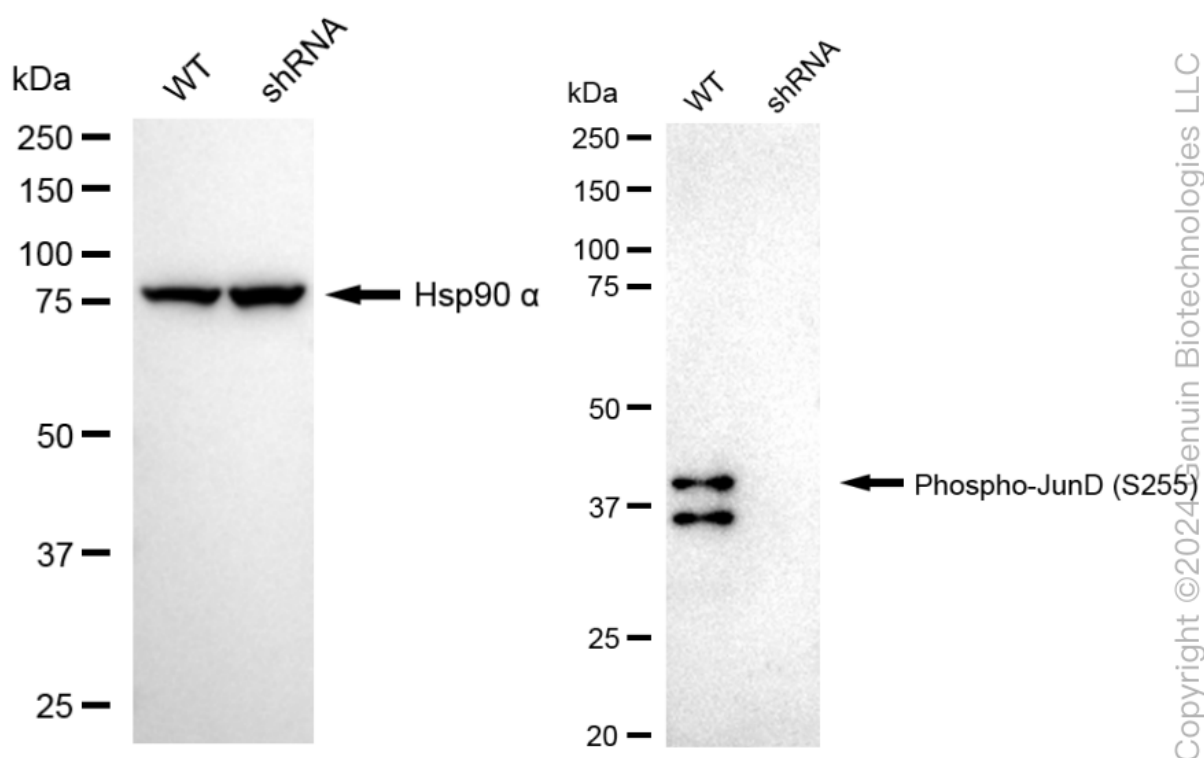
### ORDERS

SALES@GENUINBIOTECH.COM  
FAX: +1-540-855-7041

[WWW.GENUINBIOTECH.COM](http://WWW.GENUINBIOTECH.COM)

## KD-Validated Anti-Phospho-JunD (S255) Recombinant Rabbit Monoclonal Antibody

PAGE 4



Western blotting analysis using anti-Phospho-JunD (S255) antibody (Cat#62216). Phospho-JunD (S255) expression in wild type (WT) and Phospho-JunD (S255) shRNA knockdown (KD) HeLa cells with 20 µg of total cell lysates. Hsp90 α serves as a loading control. The blot was incubated with anti-Phospho-JunD (S255) antibody (Cat#62216, 1:5,000) and HRP-conjugated goat anti-rabbit secondary antibody (Cat#201, 1:20,000) respectively. Image was developed using NaQ™ ECL Substrate Kit (Cat#716).

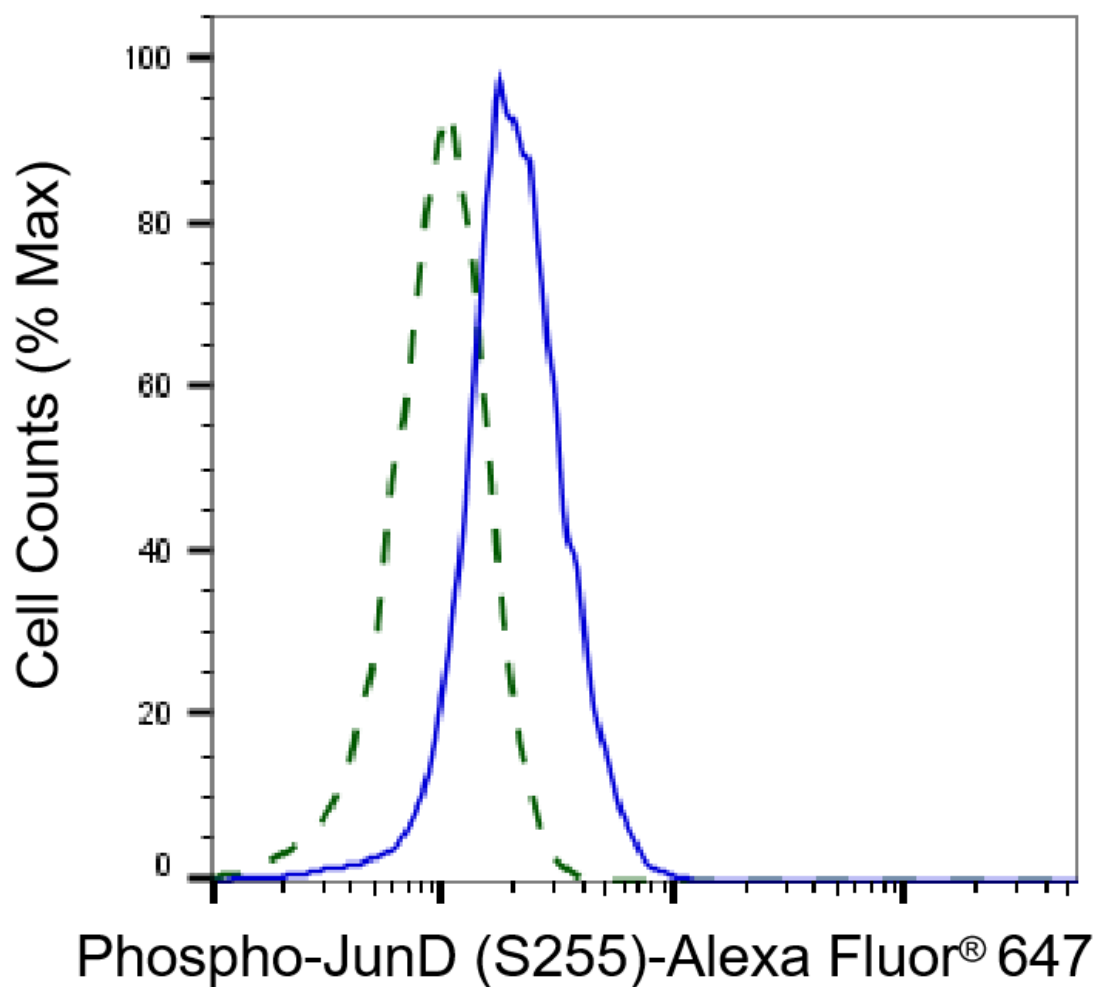
### SUPPORT

SUPPORT@GENUINBIOTECH.COM  
TEL: +1-540-855-7041

### ORDERS

SALES@GENUINBIOTECH.COM  
FAX: +1-540-855-7041

[WWW.GENUINBIOTECH.COM](http://WWW.GENUINBIOTECH.COM)



Validation of JunD knockdown using flow cytometry. Wild-type(WT, Blue) and knockdown(KD, Green) HeLa cells were stained with anti-Phospho-JunD (S255) antibody (Cat#62216, 1:2,000) and analyzed using BD flow cytometer.