

KD-Validated Anti-E2F transcription factor 1 Recombinant Rabbit Monoclonal Antibody



Catalog #: 62221

Aliases

E2F1; E2F Transcription Factor 1; RBBP3; RBP3; Retinoblastoma-Binding Protein 3 (E2F-Like); Retinoblastoma-Associated Protein 1; Retinoblastoma-Binding Protein 3; Transcription Factor E2F1; PRB-Binding Protein E2F-1; RBAP-1; RBBP-3; E2F-1; PBR3; RBAP1

Background

Gene Name: E2F1

NCBI Gene Entry: [1869](#)

UniProt Entry: [Q01094](#)

Application Information

Molecular Weight: Predicted, 47 kDa, observed, 65 kDa

Clonality: Rabbit monoclonal antibody

Clone ID: 23GB1505

Species Reactivity: Human, mouse, rat

Applications Tested: Western blotting (WB), flow cytometry (FCM), immunocytochemistry (IC)

Immunogen

A synthesized peptide derived from human E2F1

Isotype

Rabbit IgG

Storage Buffer

Supplied in PBS (pH 7.4) containing 50% glycerol, and 0.02% sodium azide.

Storage

Store at -20 °C for one year.

Recommended Dilutions

Western Blotting (WB): 1:1,000-1:5,000

Flow Cytometry (FCM): 1:2,000

Immunocytochemistry (IC): 1:100-1:1,000

Note: This product is for research use only.

SUPPORT

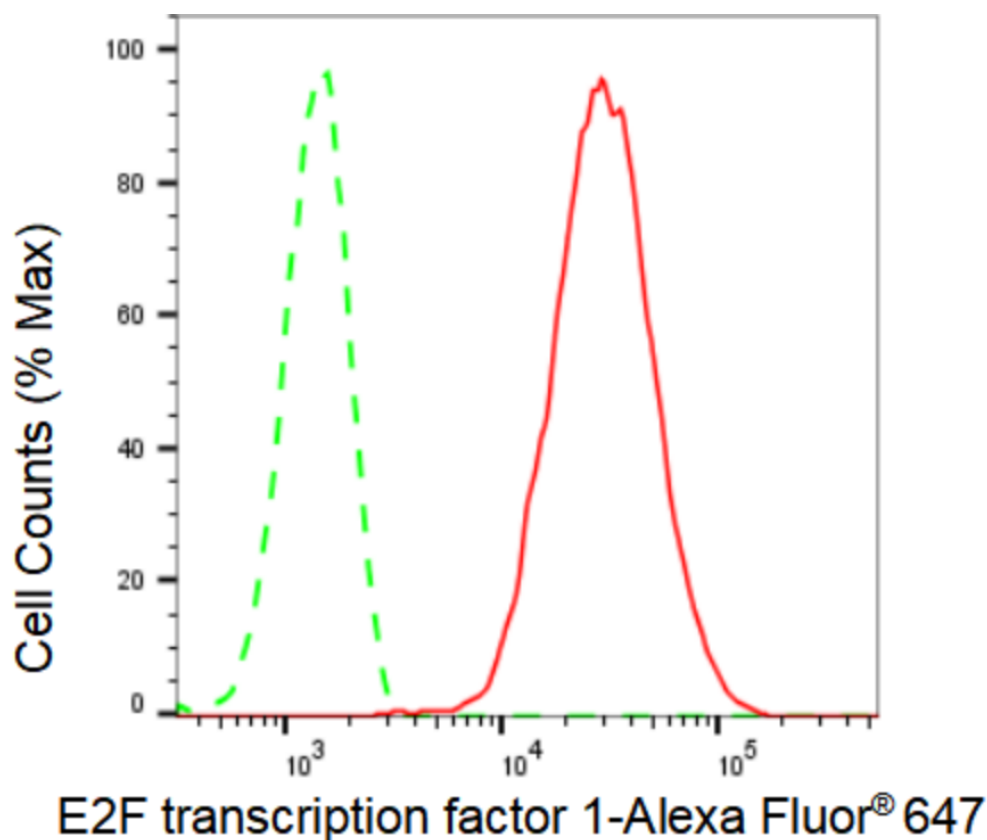
SUPPORT@GENUINBIOTECH.COM
TEL: +1-540-855-7041

ORDERS

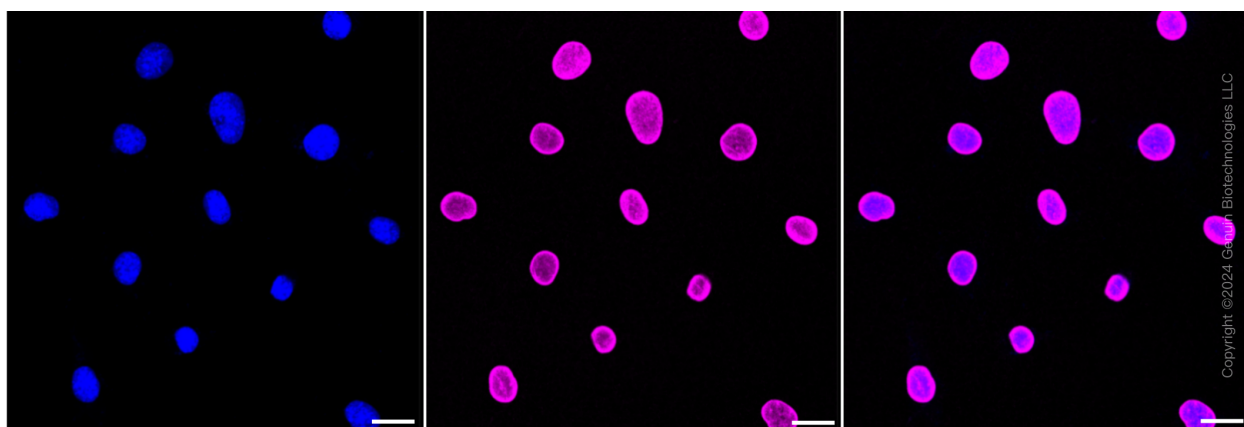
SALES@GENUINBIOTECH.COM
FAX: +1-540-855-7041

WWW.GENUINBIOTECH.COM

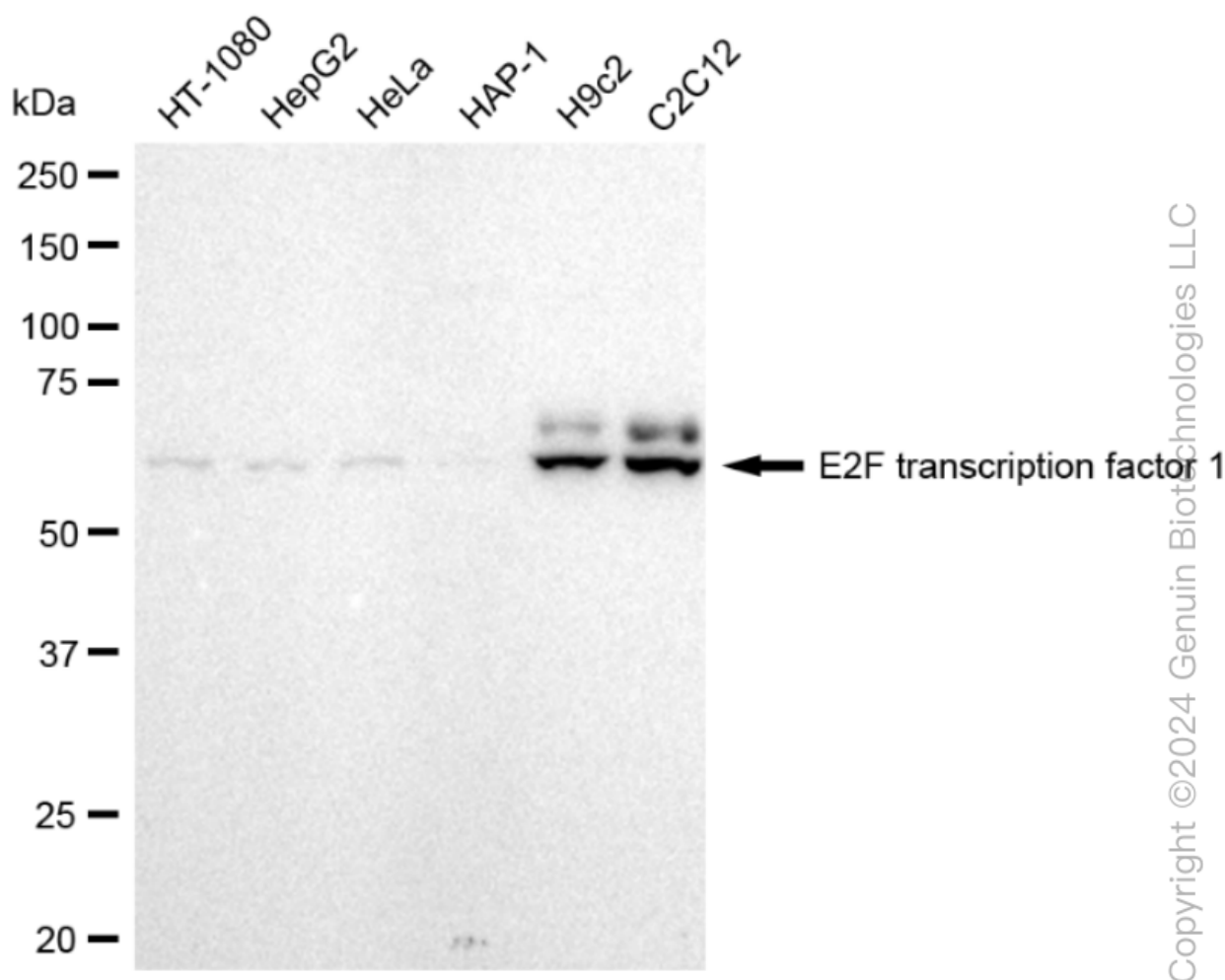
Validation Data



Copyright ©2024 Genuin Biotechnologies LLC



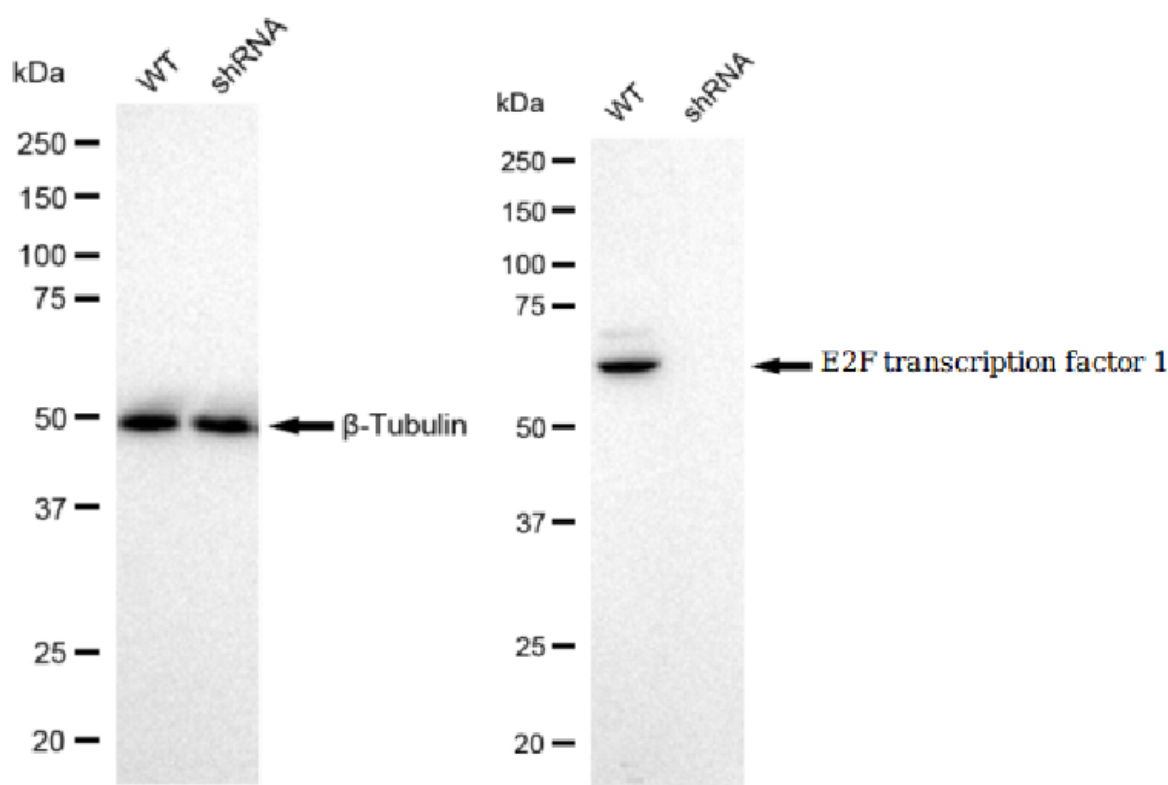
Copyright ©2024 Genuin Biotechnologies LLC



Western blotting analysis using anti-E2F transcription factor 1 antibody (Cat#62221). Total cell lysates (30 μ g) from various cell lines were loaded and separated by SDS-PAGE. The blot was incubated with anti-E2F transcription factor 1 antibody (Cat#62221, 1:5,000) and HRP-conjugated goat anti-rabbit secondary antibody (Cat#201, 1:20,000) respectively. Image was developed using FeQ™ ECL Substrate Kit (Cat#226).

KD-Validated Anti-E2F transcription factor 1 Recombinant Rabbit Monoclonal Antibody

PAGE 4



Copyright ©2024 Genuin Biotechnologies LLC

Western blotting analysis using anti-E2F transcription factor 1 antibody (Cat#62221). E2F transcription factor 1 expression in wild type (WT) and E2F transcription factor 1 shRNA knockdown (KD) HeLa cells with 30 µg of total cell lysates. β-Tubulin serves as a loading control. The blot was incubated with anti-E2F transcription factor 1 antibody (Cat#62221, 1:5,000) and HRP-conjugated goat anti-rabbit secondary antibody (Cat#201, 1:20,000) respectively. Image was developed using FeQ™ ECL Substrate Kit (Cat#226).

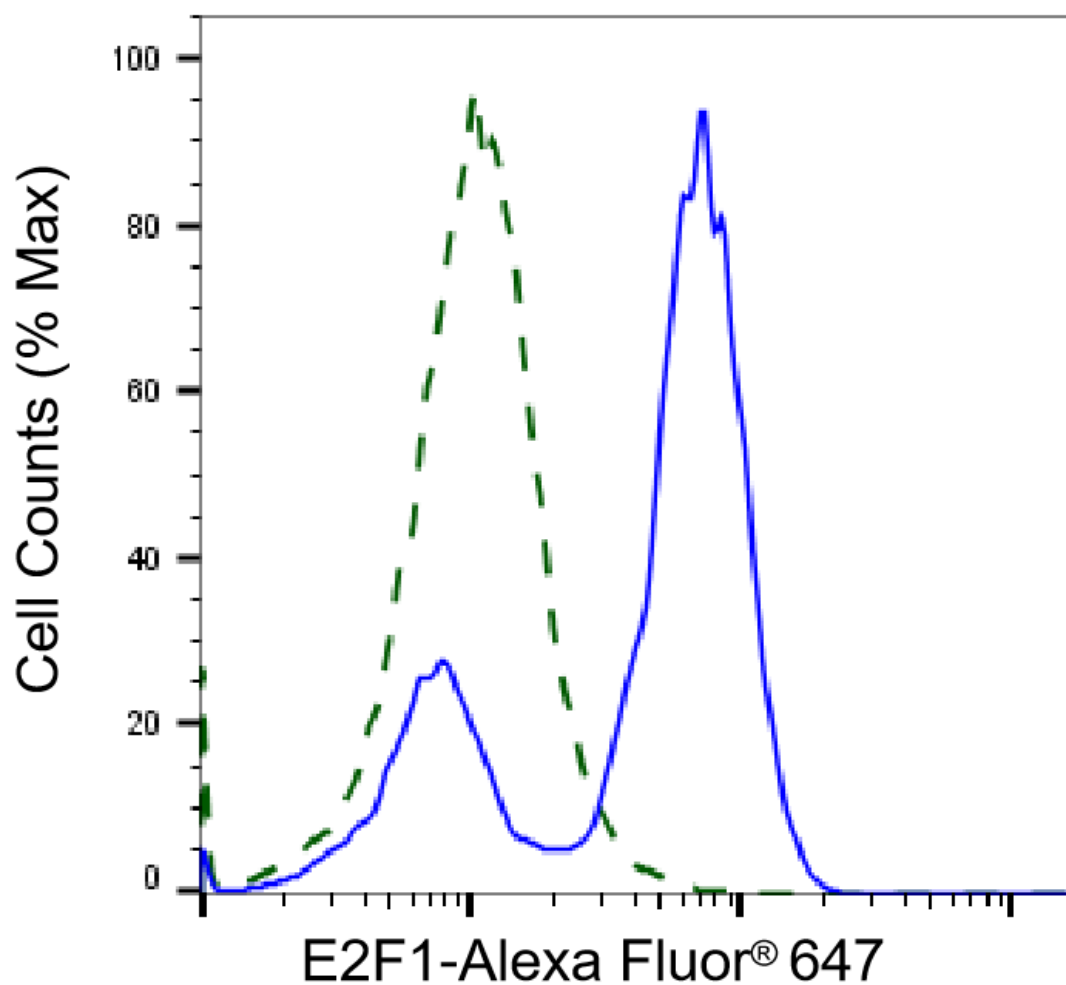
SUPPORT

SUPPORT@GENUINBIOTECH.COM
TEL: +1-540-855-7041

ORDERS

SALES@GENUINBIOTECH.COM
FAX: +1-540-855-7041

WWW.GENUINBIOTECH.COM



Copyright ©2025 Genuin Biotechnologies LLC

Validation of E2F1 knockdown using flow cytometry. Wild-type(WT, Blue) and knockdown(KD, Green) HeLa cells were stained with anti-E2F1 antibody (Cat#62221, 1:2,000) and analyzed using BD flow cytometer.