

KD-Validated Anti-MLD Recombinant Rabbit Monoclonal Antibody



Catalog #: 62231

Aliases

DEGS1; Delta 4-Desaturase, Sphingolipid 1; DES1; MLD; DEGS-1; FADS7; Cell Migration-Inducing Gene 15 Protein; Sphingolipid Delta(4)-Desaturase DES1; Sphingolipid Delta(4)-Desaturase 1; Dihydroceramide Desaturase 1; Membrane Lipid Desaturase; Retinol Isomerase; Des-1; Degenerative Spermatocyte Homolog 1, Lipid Desaturase (Drosophila); Degenerative Spermatocyte Homolog 1, Lipid Desaturase; Degenerative Spermatocyte Homolog, Lipid Desaturase; Membrane Fatty Acid (Lipid) Desaturase; Degenerative Spermatocyte Homolog 1; Migration-Inducing Gene 15 Protein; Sphingolipid Delta 4 Desaturase; Dihydroceramide Desaturase-1; EC 1.14.19.17; EC 5.2.1.-; HLD18; MIG15; DES-1; DEGS

Background

Gene Name: DEGS1

NCBI Gene Entry: [8560](#)

UniProt Entry: [O15121](#)

Application Information

Molecular Weight: Predicted, 38 kDa, observed, 34 kDa

Clonality: Rabbit monoclonal antibody

Clone ID: 23GB1215

Species Reactivity: Human

Applications Tested: Western blotting (WB), flow cytometry (FCM), immunocytochemistry (IC)

Immunogen

A synthesized peptide derived from human MLD

Isotype

Rabbit IgG

Storage Buffer

Supplied in PBS (pH 7.4) containing 50% glycerol, and 0.02% sodium azide.

Storage

Store at -20 °C for one year.

Recommended Dilutions

Western Blotting (WB): 1:1,000-1:5,000

SUPPORT

SUPPORT@GENUINBIOTECH.COM
TEL: +1-540-855-7041

ORDERS

SALES@GENUINBIOTECH.COM
FAX: +1-540-855-7041

WWW.GENUINBIOTECH.COM

KD-Validated Anti-MLD Recombinant Rabbit Monoclonal Antibody

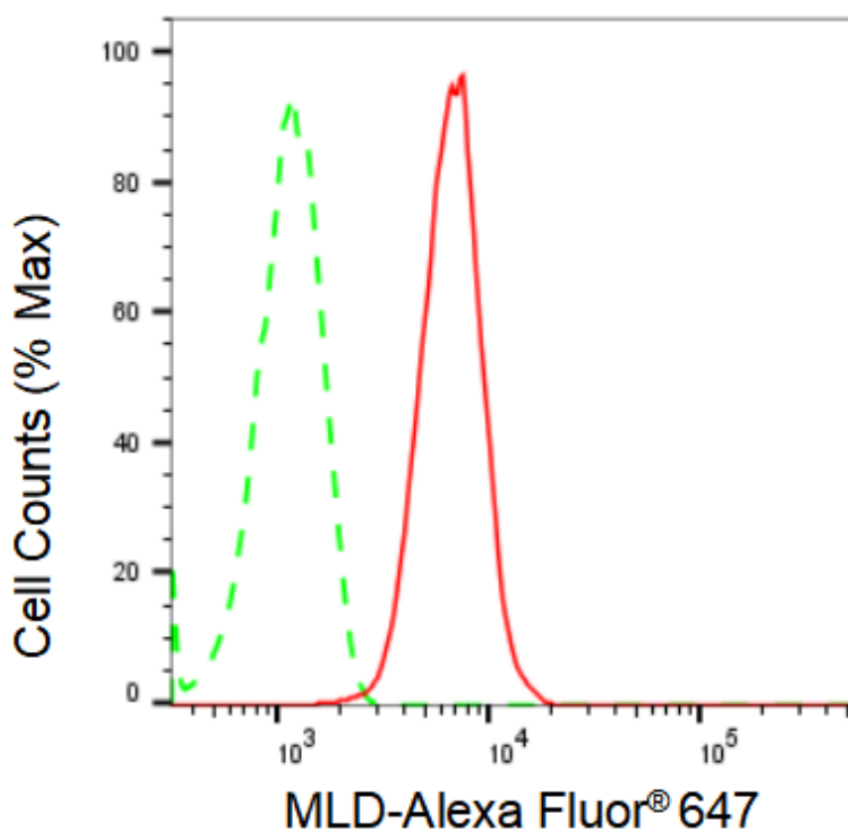
PAGE 2

Flow Cytometry (FCM): 1:2,000

Immunocytochemistry (IC): 1:100-1:1,000

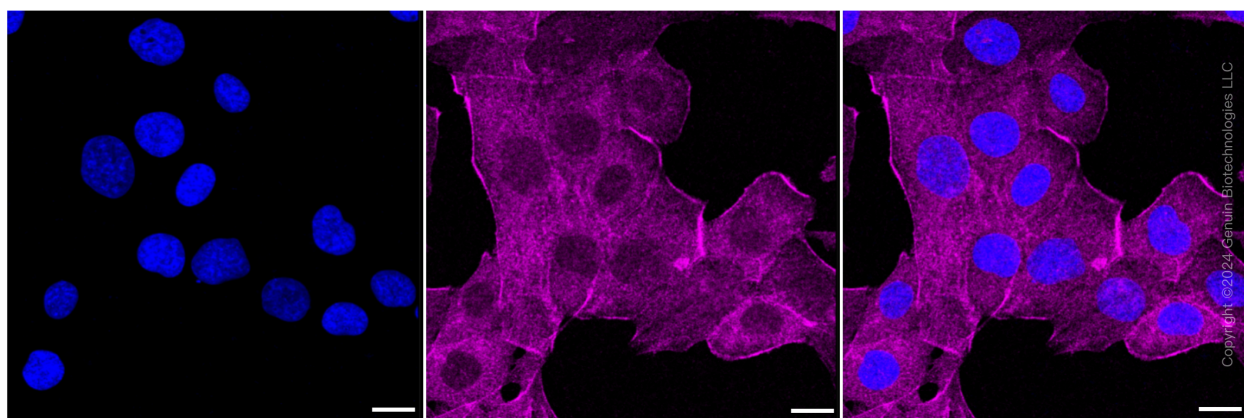
Note: This product is for research use only.

Validation Data



Copyright ©2024 Genuin Biotechnologies LLC

Flow cytometric analysis of MLD expression in HepG2 cells using MLD antibody (Cat#62231, 1:2,000). Green, isotype control; red, MLD.



Immunocytochemical staining of HT-1080 cells with MLD antibody (Cat#62231, 1:1,000). Nuclei

SUPPORT

SUPPORT@GENUINBIOTECH.COM
TEL: +1-540-855-7041

ORDERS

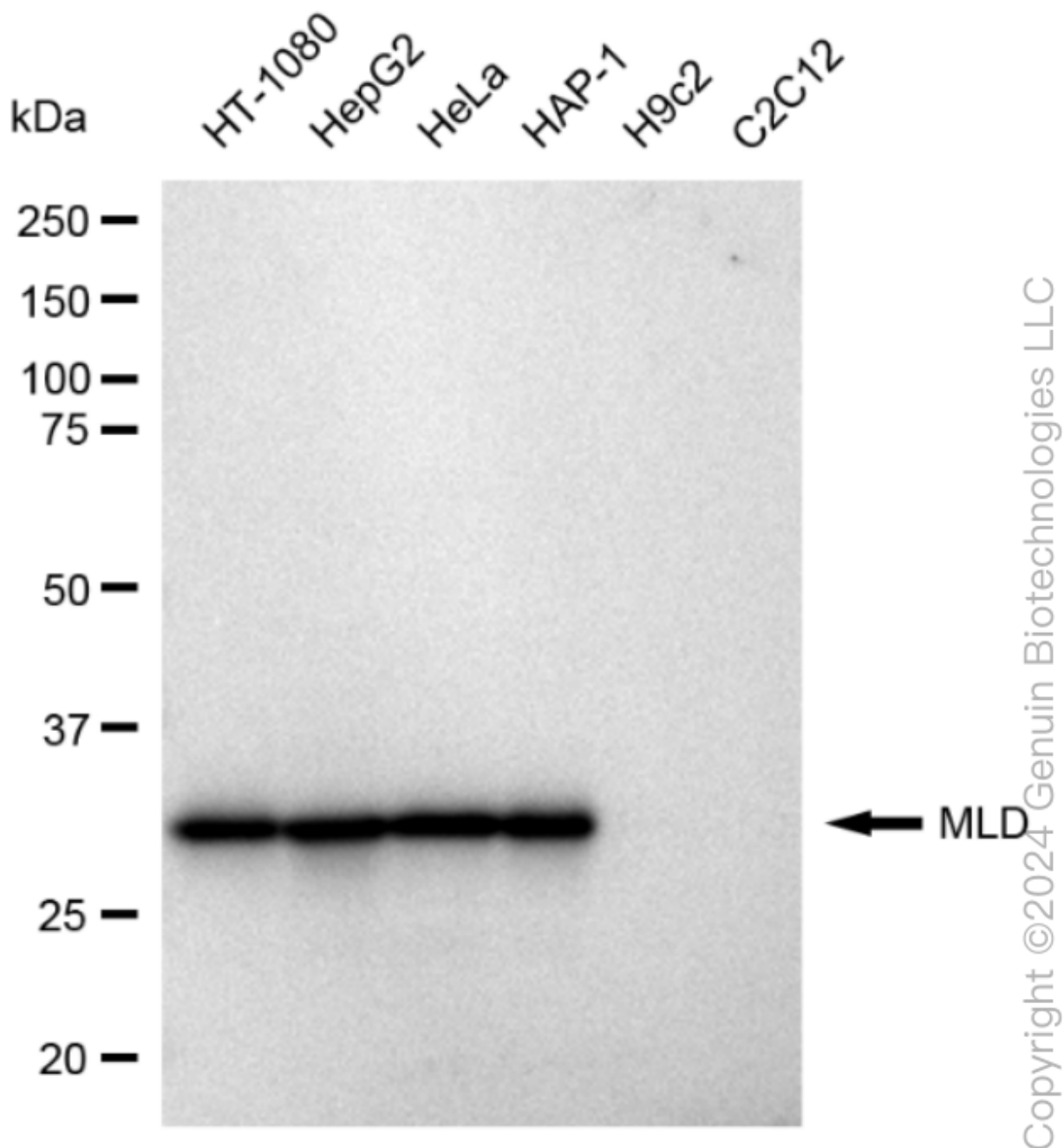
SALES@GENUINBIOTECH.COM
FAX: +1-540-855-7041

WWW.GENUINBIOTECH.COM

KD-Validated Anti-MLD Recombinant Rabbit Monoclonal Antibody

PAGE 3

were stained blue with DAPI; MLD was stained magenta with Alexa Fluor® 647. Images were taken using Leica stellaris 5. Protein abundance based on laser Intensity and smart gain: High. Scale bar: 20 µm.



Western blotting analysis using anti-MLD antibody (Cat#62231). Total cell lysates (30 µg) from various cell lines were loaded and separated by SDS-PAGE. The blot was incubated with anti-MLD antibody (Cat#62231, 1:5,000) and HRP-conjugated goat anti-rabbit secondary antibody (Cat#201, 1:20,000) respectively. Image was developed using FeQ™ ECL Substrate Kit (Cat#226).

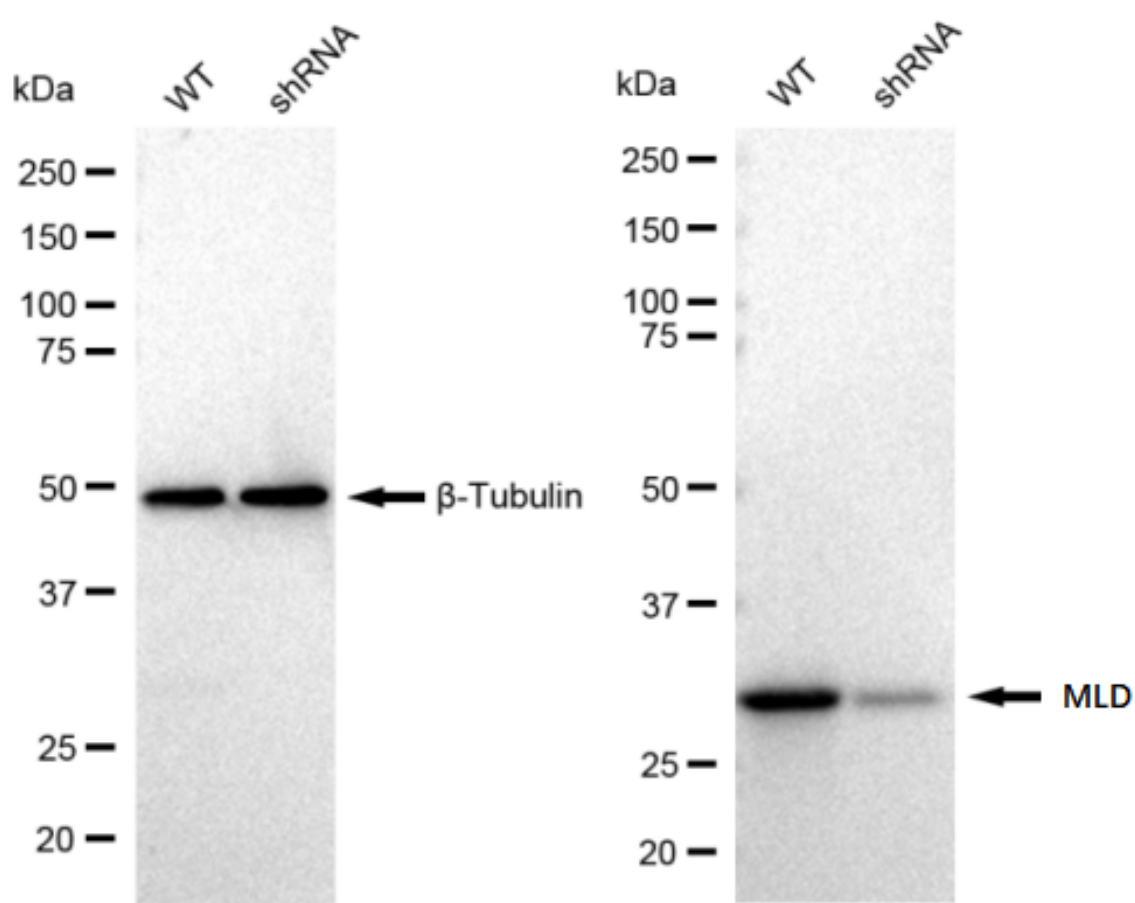
SUPPORT

SUPPORT@GENUINBIOTECH.COM
TEL: +1-540-855-7041

ORDERS

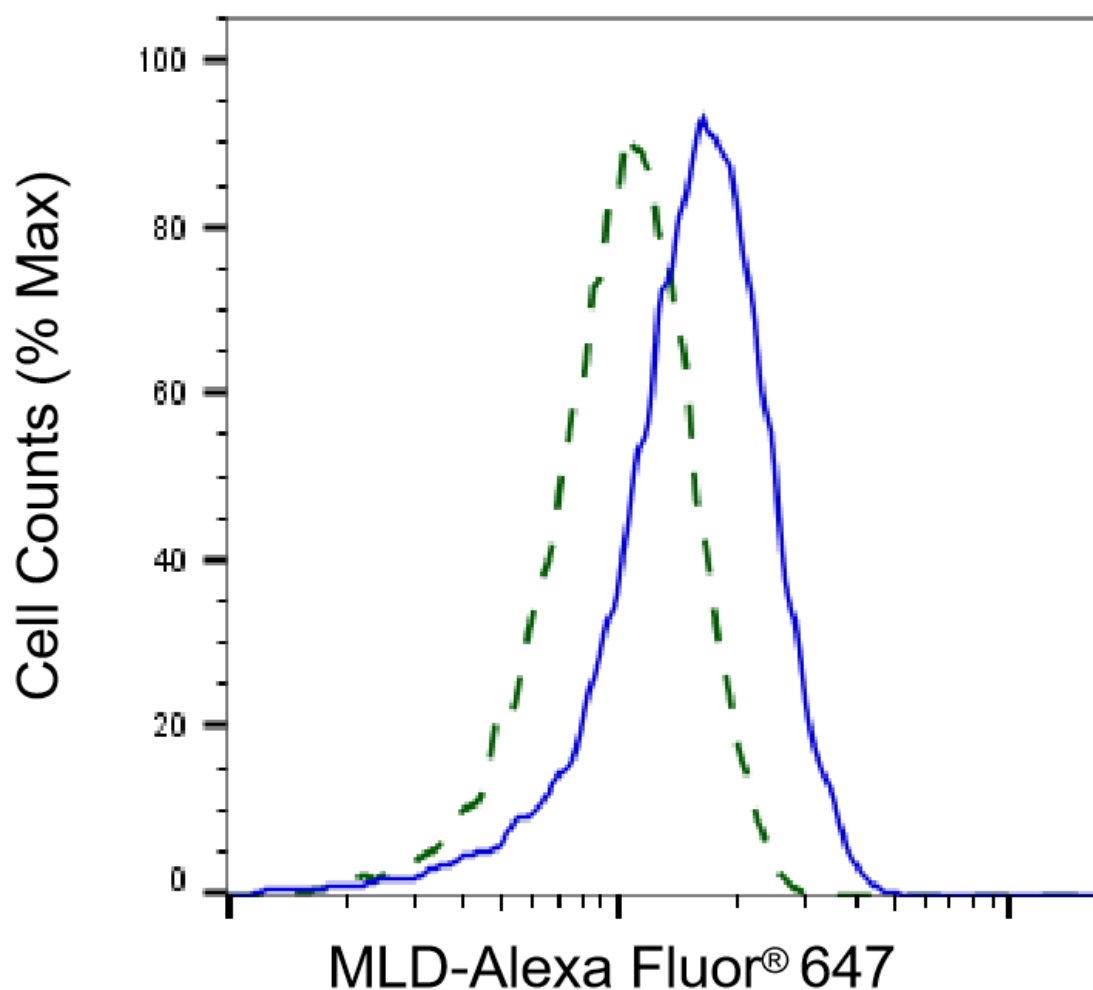
SALES@GENUINBIOTECH.COM
FAX: +1-540-855-7041

WWW.GENUINBIOTECH.COM



ight ©2024 Genuin Biotechnologies

Western blotting analysis using anti-MLD antibody (Cat#62231). MLD expression in wild type (WT) and MLD shRNA knockdown (KD) HT-1080 cells with 30 µg of total cell lysates. β-Tubulin serves as a loading control. The blot was incubated with anti-MLD antibody (Cat#62231, 1:5,000) and HRP-conjugated goat anti-rabbit secondary antibody (Cat#201, 1:20,000) respectively. Image was developed using FeQ™ ECL Substrate Kit (Cat#226).



Copyright ©2025 Genuin Biotechnologies LLC

Validation of MLD knockdown using flow cytometry. Wild-type(WT, Blue) and knockdown(KD, Green) HT-1080 cells were stained with anti-MLD antibody (Cat#62231, 1:2,000) and analyzed using BD flow cytometer.