

KD-Validated Anti-IL13 receptor alpha 1 Recombinant Rabbit Monoclonal Antibody



Catalog #: 62240

Aliases

IL13RA1; Interleukin 13 Receptor Subunit Alpha 1; CD213a1 Antigen; IL-13Ra; CD213a1; NR4; Interleukin-13 Receptor Subunit Alpha-1; Interleukin 13 Receptor, Alpha 1; IL-13 Receptor Subunit Alpha-1; IL13 Receptor Alpha-1 Chain; Cancer/Testis Antigen 19; IL-13R Subunit Alpha-1; CT19; IL-13R-Alpha-1; IL-13RA1; IL13RA; IL13R

Background

Gene Name: IL13RA1

NCBI Gene Entry: [3597](#)

UniProt Entry: [P78552](#)

Application Information

Molecular Weight: Predicted, 49 kDa, observed, 50 kDa

Clonality: Rabbit monoclonal antibody

Clone ID: 23GB6655

Species Reactivity: Human

Applications Tested: Western blotting (WB), flow cytometry (FCM), immunocytochemistry (IC)

Immunogen

A synthesized peptide derived from human IL13 receptor alpha 1

Isotype

Rabbit IgG

Storage Buffer

Supplied in PBS (pH 7.4) containing 50% glycerol, and 0.02% sodium azide.

Storage

Store at -20 °C for one year.

Recommended Dilutions

Western Blotting (WB): 1:1,000-1:5,000

Flow Cytometry (FCM): 1:2,000

Immunocytochemistry (IC): 1:100-1:1,000

SUPPORT

SUPPORT@GENUINBIOTECH.COM
TEL: +1-540-855-7041

ORDERS

SALES@GENUINBIOTECH.COM
FAX: +1-540-855-7041

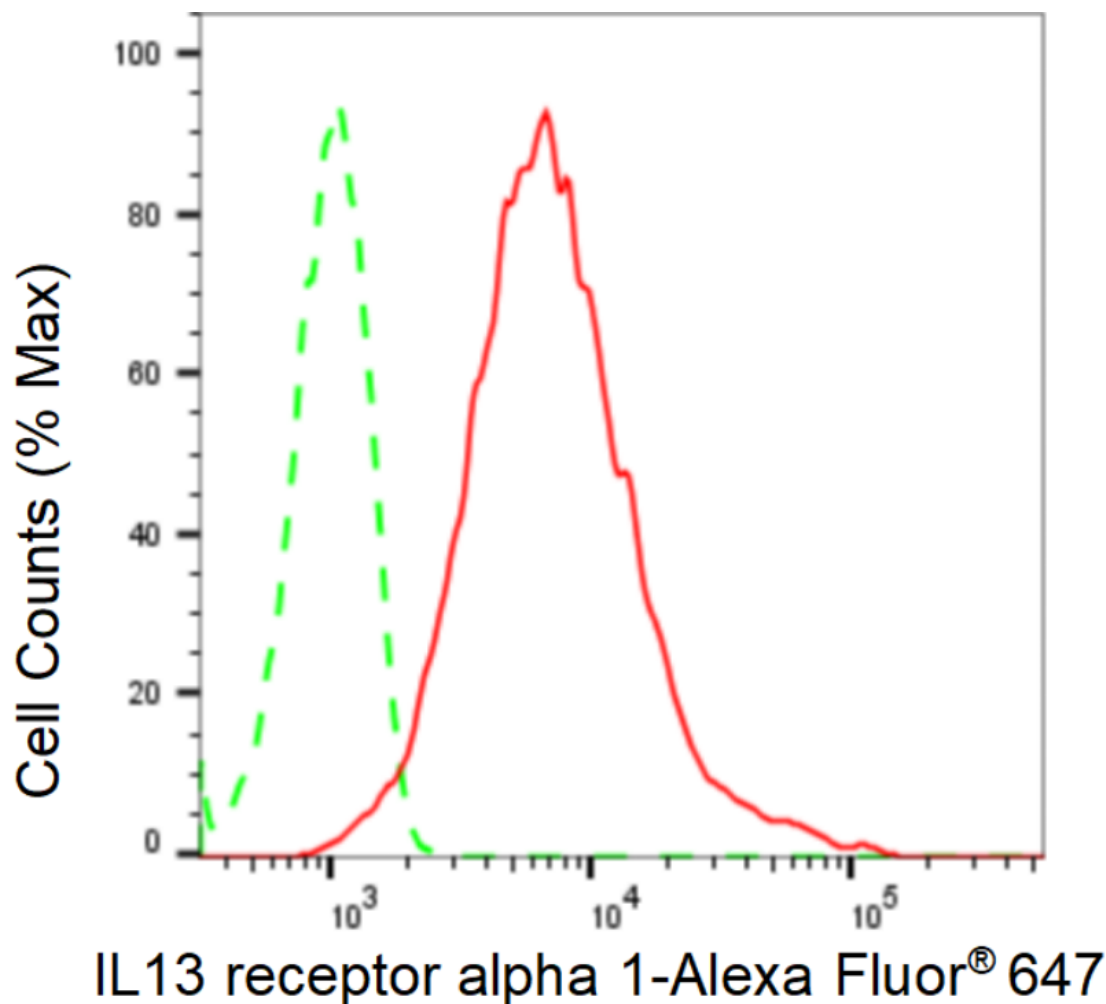
WWW.GENUINBIOTECH.COM

KD-Validated Anti-IL13 receptor alpha 1 Recombinant Rabbit Monoclonal Antibody

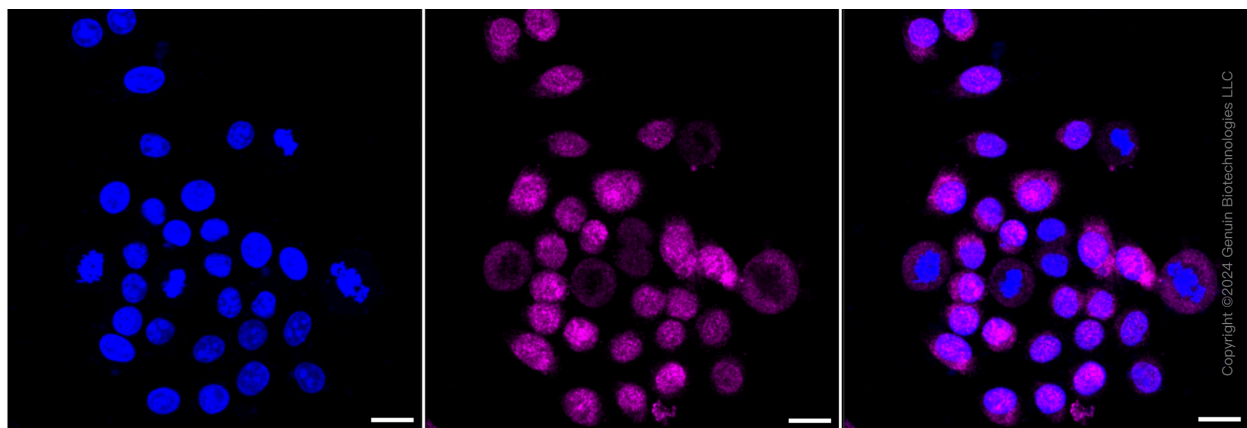
PAGE 2

Note: This product is for research use only.

Validation Data



Flow cytometric analysis of IL13 receptor alpha 1 expression in HepG2 cells using IL13 receptor alpha 1 antibody (Cat#62240, 1:2,000). Green, isotype control; red, IL13 receptor alpha 1.



SUPPORT

SUPPORT@GENUINBIOTECH.COM
TEL: +1-540-855-7041

ORDERS

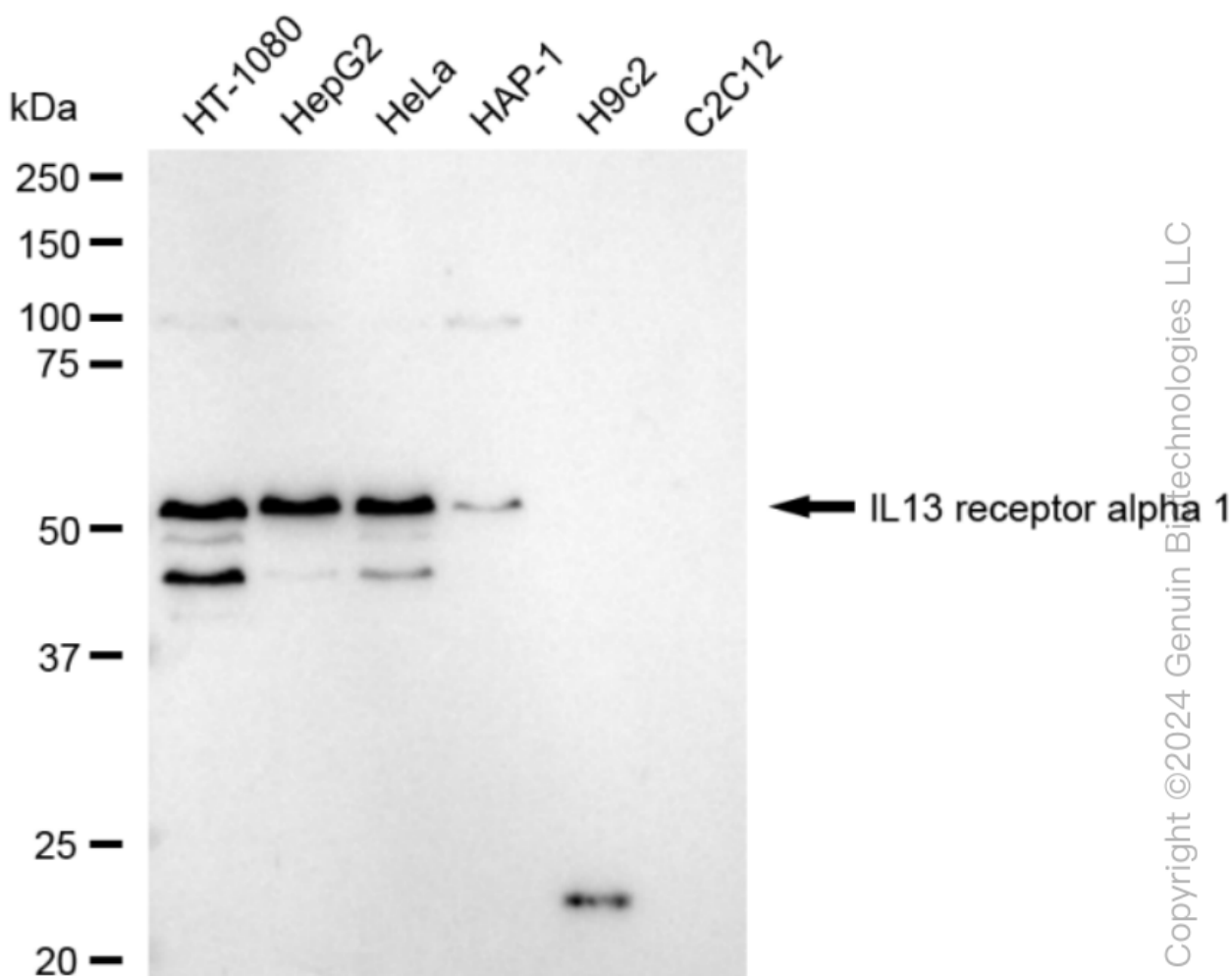
SALES@GENUINBIOTECH.COM
FAX: +1-540-855-7041

WWW.GENUINBIOTECH.COM

KD-Validated Anti-IL13 receptor alpha 1 Recombinant Rabbit Monoclonal Antibody

PAGE 3

Immunocytochemical staining of Hela cells with anti-IL13 receptor alpha 1 antibody (Cat#62240, 1:1,000). Nuclei were stained blue with DAPI; IL13 receptor alpha 1 was stained magenta with Alexa Fluor® 647. Images were taken using Leica stellaris 5. Protein abundance based on laser Intensity and smart gain: Medium. Scale bar: 20 μ m.



Western blotting analysis using anti-IL13 receptor alpha 1 antibody (Cat#62240). Total cell lysates (30 μ g) from various cell lines were loaded and separated by SDS-PAGE. The blot was incubated with anti-IL13 receptor alpha 1 antibody (Cat#62240, 1:5,000) and HRP-conjugated goat anti-rabbit secondary antibody (Cat#201, 1:20,000) respectively. Image was developed using FeQ™ ECL Substrate Kit (Cat#226).

SUPPORT

SUPPORT@GENUINBIOTECH.COM
TEL: +1-540-855-7041

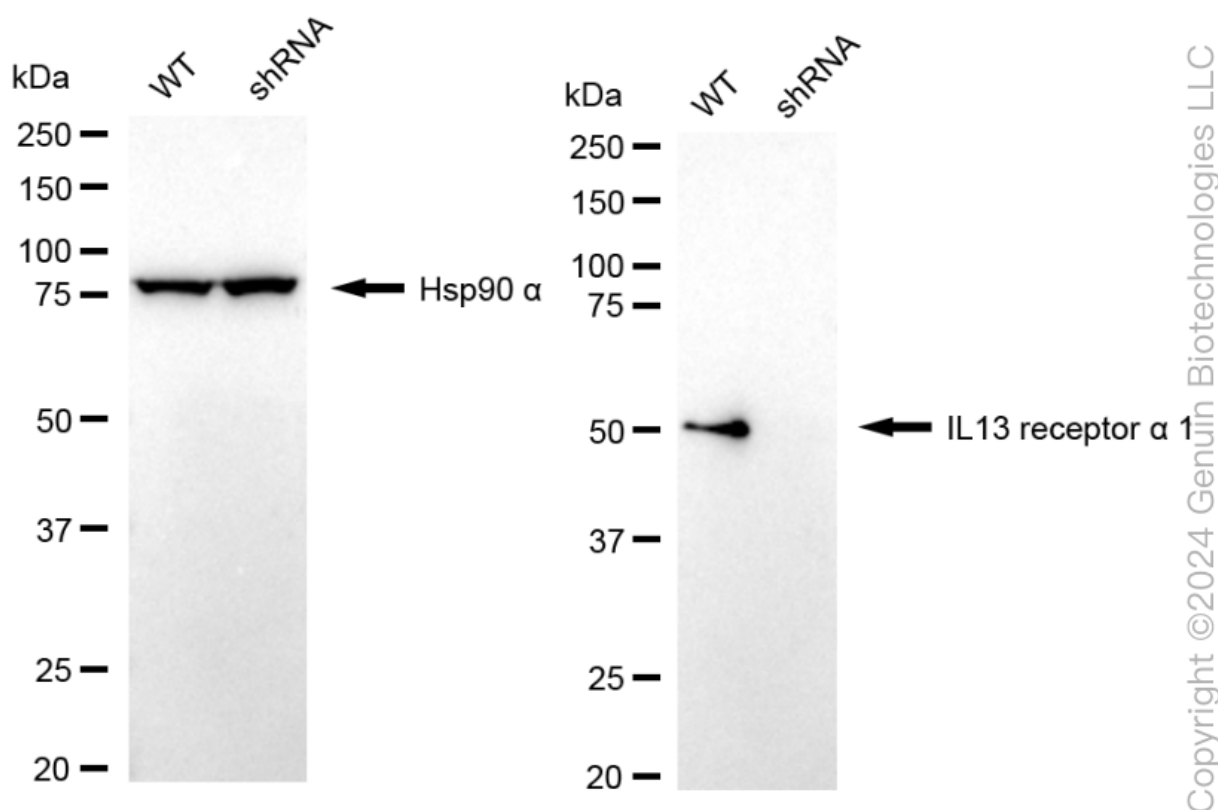
ORDERS

SALES@GENUINBIOTECH.COM
FAX: +1-540-855-7041

WWW.GENUINBIOTECH.COM

KD-Validated Anti-IL13 receptor alpha 1 Recombinant Rabbit Monoclonal Antibody

PAGE 4



Western blotting analysis using anti-IL13 receptor α 1 antibody (Cat#62240). IL13 receptor α 1 expression in wild type (WT) and IL13 receptor α 1 shRNA knockdown (KD) HeLa cells with 20 μ g of total cell lysates. Hsp90 α serves as a loading control. The blot was incubated with anti-IL13 receptor α 1 antibody (Cat#62240, 1:5,000) and HRP-conjugated goat anti-rabbit secondary antibody (Cat#201, 1:20,000) respectively. Image was developed using NaQTM ECL Substrate Kit (Cat#716).

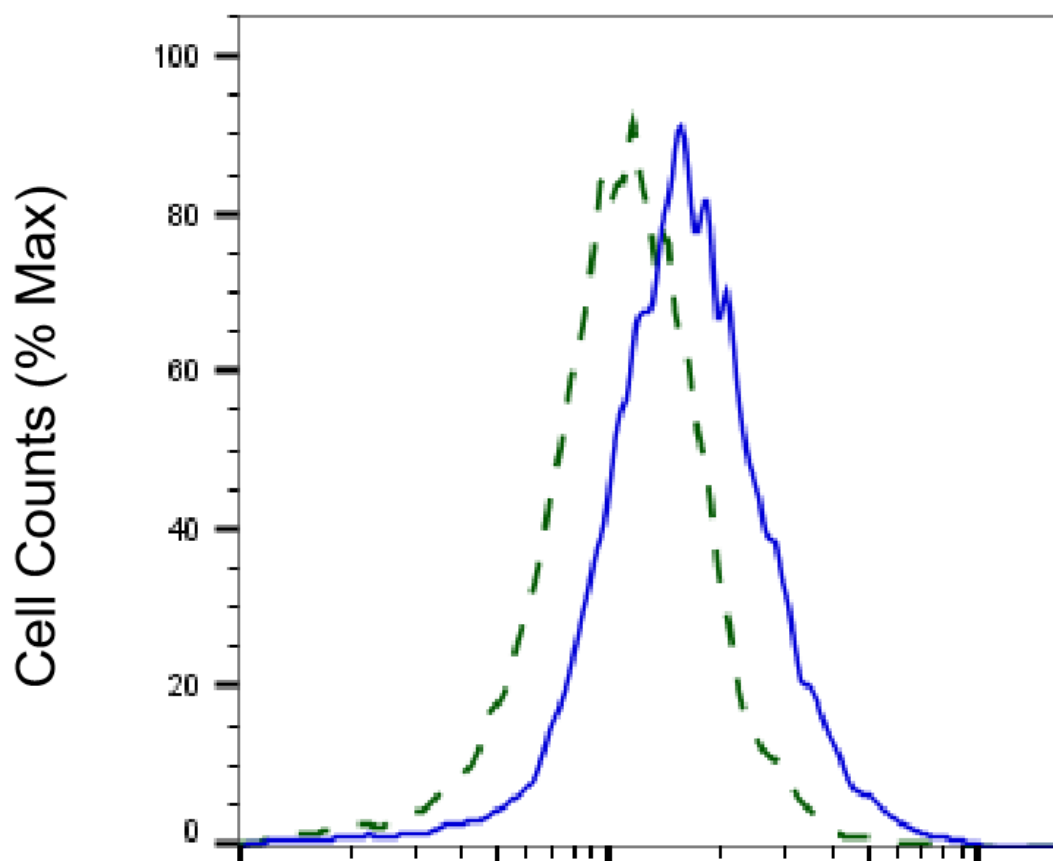
SUPPORT

SUPPORT@GENUINBIOTECH.COM
TEL: +1-540-855-7041

ORDERS

SALES@GENUINBIOTECH.COM
FAX: +1-540-855-7041

WWW.GENUINBIOTECH.COM



Copyright ©2025 Genuin Biotechnologies LLC

IL13 receptor alpha 1-Alexa Fluor® 647

Validation of IL13 receptor alpha 1 knockdown using flow cytometry. Wild-type(WT, Blue) and knockdown(KD, Green) HeLa cells were stained with anti-IL13 receptor alpha 1 antibody (Cat#62240, 1:2,000) and analyzed using BD flow cytometer.