

KD-Validated Anti-Phospho-Src (Y529) Recombinant Rabbit Monoclonal Antibody



Catalog #: 62248

Aliases

SRC; SRC Proto-Oncogene, Non-Receptor Tyrosine Kinase; C-Src; SRC1; ASV; V-Src Avian Sarcoma (Schmidt-Ruppin A-2) Viral Oncogene Homolog; Proto-Oncogene Tyrosine-Protein Kinase Src; Proto-Oncogene C-Src; EC 2.7.10.2; P60-Src; Protooncogene SRC, Rous Sarcoma; Tyrosine-Protein Kinase SRC-1; Tyrosine Kinase Pp60c-Src; Pp60c-Src; EC 2.7.10; THC6

Background

Gene Name: SRC

NCBI Gene Entry: [6714](#)

UniProt Entry: [P12931](#)

Application Information

Molecular Weight: Predicted, 60 kDa, observed, 60 kDa

Clonality: Rabbit monoclonal antibody

Clone ID: 23GB6690

Species Reactivity: Human, mouse, rat

Applications Tested: Western blotting (WB), flow cytometry (FCM), immunocytochemistry (IC)

Immunogen

A synthesized peptide derived from human Phospho-Src (Y529)

Isotype

Rabbit IgG

Storage Buffer

Supplied in PBS (pH 7.4) containing 50% glycerol, and 0.02% sodium azide.

Storage

Store at -20 °C for one year.

Recommended Dilutions

Western Blotting (WB): 1:1,000-1:5,000

Flow Cytometry (FCM): 1:2,000

Immunocytochemistry (IC): 1:100-1:1,000

SUPPORT

SUPPORT@GENUINBIOTECH.COM
TEL: +1-540-855-7041

ORDERS

SALES@GENUINBIOTECH.COM
FAX: +1-540-855-7041

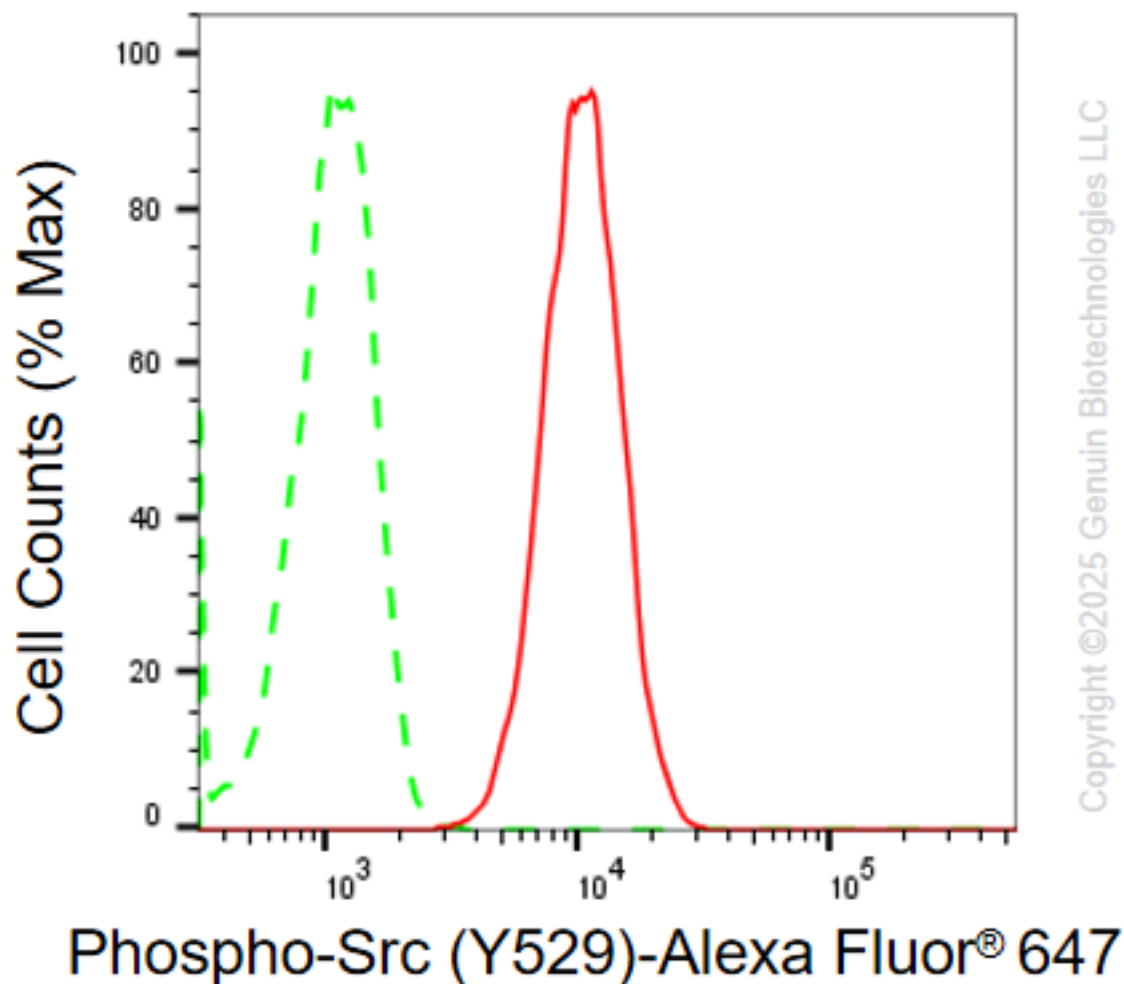
WWW.GENUINBIOTECH.COM

KD-Validated Anti-Phospho-Src (Y529) Recombinant Rabbit Monoclonal Antibody

PAGE 2

Note: This product is for research use only.

Validation Data



Flow cytometric analysis of Phospho-Src (Y529) expression in C2C12 cells using anti-Phospho-Src (Y529) antibody (Cat#62248, 1 μ g/2000). Green, isotype control; red, Phospho-Src (Y529).

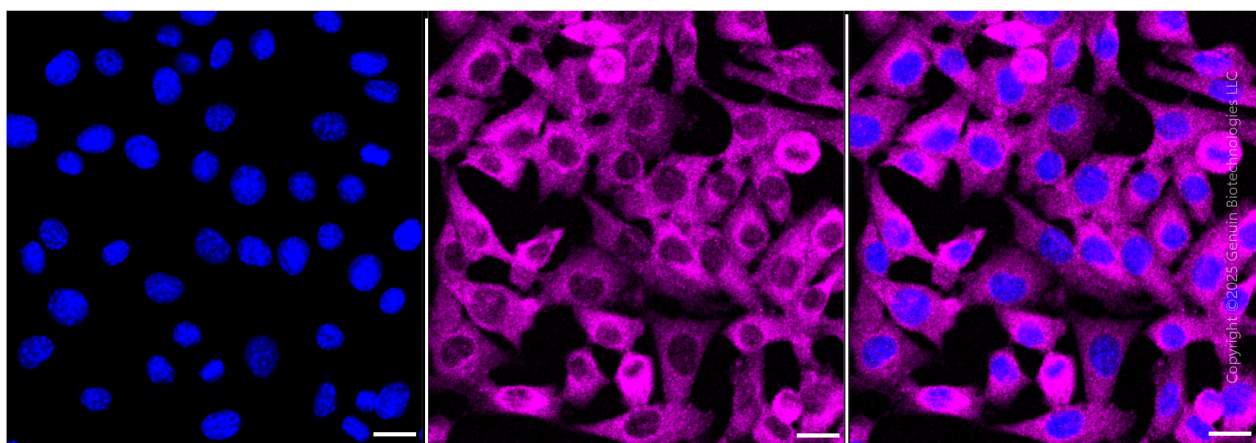
SUPPORT

SUPPORT@GENUINBIOTECH.COM
TEL: +1-540-855-7041

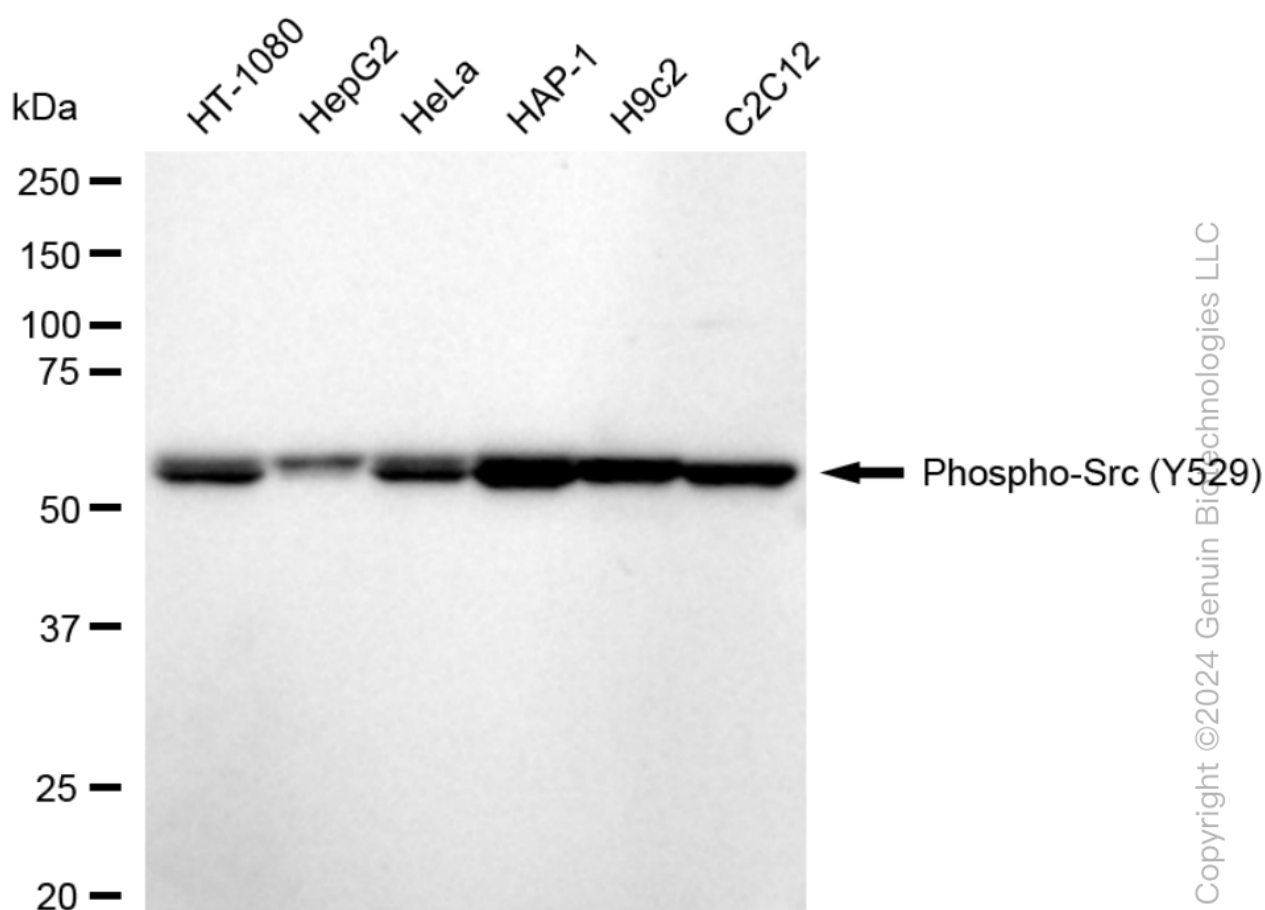
ORDERS

SALES@GENUINBIOTECH.COM
FAX: +1-540-855-7041

WWW.GENUINBIOTECH.COM



Immunocytochemical staining of HepG2 cells with anti-Phospho-Src (Y529) antibody (Cat#62248, 1:1,000) . Nuclei were stained blue with anti-DAPI; Phospho-Src (Y529) was stained magenta with Alexa Fluor® 647. Images were taken using Leica stellaris 5. Protein abundance based on laser Intensity and smart gain: Medium. Scale bar, 20 μ m.

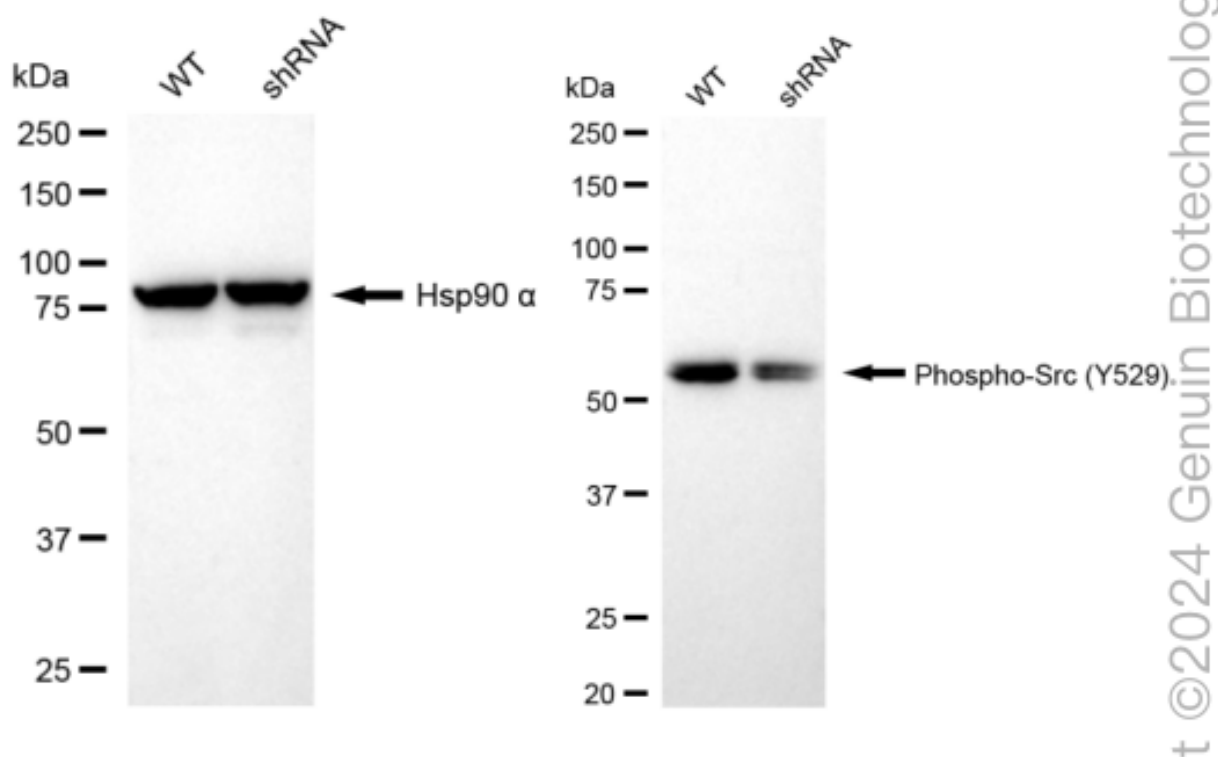


Western blotting analysis using anti-Phospho-Src (Y529) antibody (Cat#62248). Total cell lysates (30 μ g) from various cell lines were loaded and separated by SDS-PAGE. The blot was incubated with anti-Phospho-Src (Y529) antibody (Cat#62248, 1:5,000) and HRP-conjugated goat anti-

KD-Validated Anti-Phospho-Src (Y529) Recombinant Rabbit Monoclonal Antibody

PAGE 4

rabbit secondary antibody (Cat#201, 1:20,000) respectively. Image was developed using FeQ™ ECL Substrate Kit (Cat#226).



Western blotting analysis using anti-Phospho-Src (Y529) antibody (Cat#62248). Phospho-Src (Y529) expression in wild type (WT) and Phospho-Src (Y529) shRNA knockdown (KD) HT-1080 cells with 30 µg of total cell lysates. Hsp90 α serves as a loading control. The blot was incubated with anti-Phospho-Src (Y529) antibody (Cat#62248, 1:5,000) and HRP-conjugated goat anti-rabbit secondary antibody (Cat#201, 1:20,000) respectively. Image was developed using FeQ™ ECL Substrate Kit (Cat#226).

SUPPORT

SUPPORT@GENUINBIOTECH.COM
TEL: +1-540-855-7041

ORDERS

SALES@GENUINBIOTECH.COM
FAX: +1-540-855-7041

WWW.GENUINBIOTECH.COM