

KD-Validated Anti-Glutamic-oxaloacetic transaminase 2 Recombinant Rabbit



Catalog #: 62249

Aliases

GOT2; Glutamic-Oxaloacetic Transaminase 2; KYAT4; Kynurenine Aminotransferase IV; MAspAT; KATIV; KAT4; Plasma Membrane-Associated Fatty Acid-Binding Protein; Glutamic-Oxaloacetic Transaminase 2, Mitochondrial; Aspartate Aminotransferase, Mitochondrial; Kynurenine--Oxoglutarate Transaminase IV; Kynurenine--Oxoglutarate Transaminase 4; Glutamate Oxaloacetate Transaminase 2; Kynurenine Aminotransferase 4; Aspartate Aminotransferase 2; Fatty Acid-Binding Protein; Aspartate Transaminase 2; Transaminase A; EC 2.6.1.1; MitAAT; FABP-1; FABPpm; Glutamic-Oxaloacetic Transaminase 2, Mitochondrial (Aspartate Aminotransferase 2); EC 2.6.1.7; EC 2.6.1; MITAAT; DEE82

Background

Gene Name: GOT2

NCBI Gene Entry: [2806](#)

UniProt Entry: [P00505](#)

Application Information

Molecular Weight: Predicted, 48 kDa, observed, 43 kDa

Clonality: Rabbit monoclonal antibody

Clone ID: 23GB7985

Species Reactivity: Human, mouse, rat

Applications Tested: Western blotting (WB), flow cytometry (FCM), immunocytochemistry (IC)

Immunogen

A synthesized peptide derived from human GOT2

Isotype

Rabbit IgG

Storage Buffer

Supplied in PBS (pH 7.4) containing 50% glycerol, and 0.02% sodium azide.

Storage

Store at -20 °C for one year.

Recommended Dilutions

Western Blotting (WB): 1:1,000-1:5,000

SUPPORT

SUPPORT@GENUINBIOTECH.COM
TEL: +1-540-855-7041

ORDERS

SALES@GENUINBIOTECH.COM
FAX: +1-540-855-7041

WWW.GENUINBIOTECH.COM

KD-Validated Anti-Glutamic-oxaloacetic transaminase 2 Recombinant Rabbit

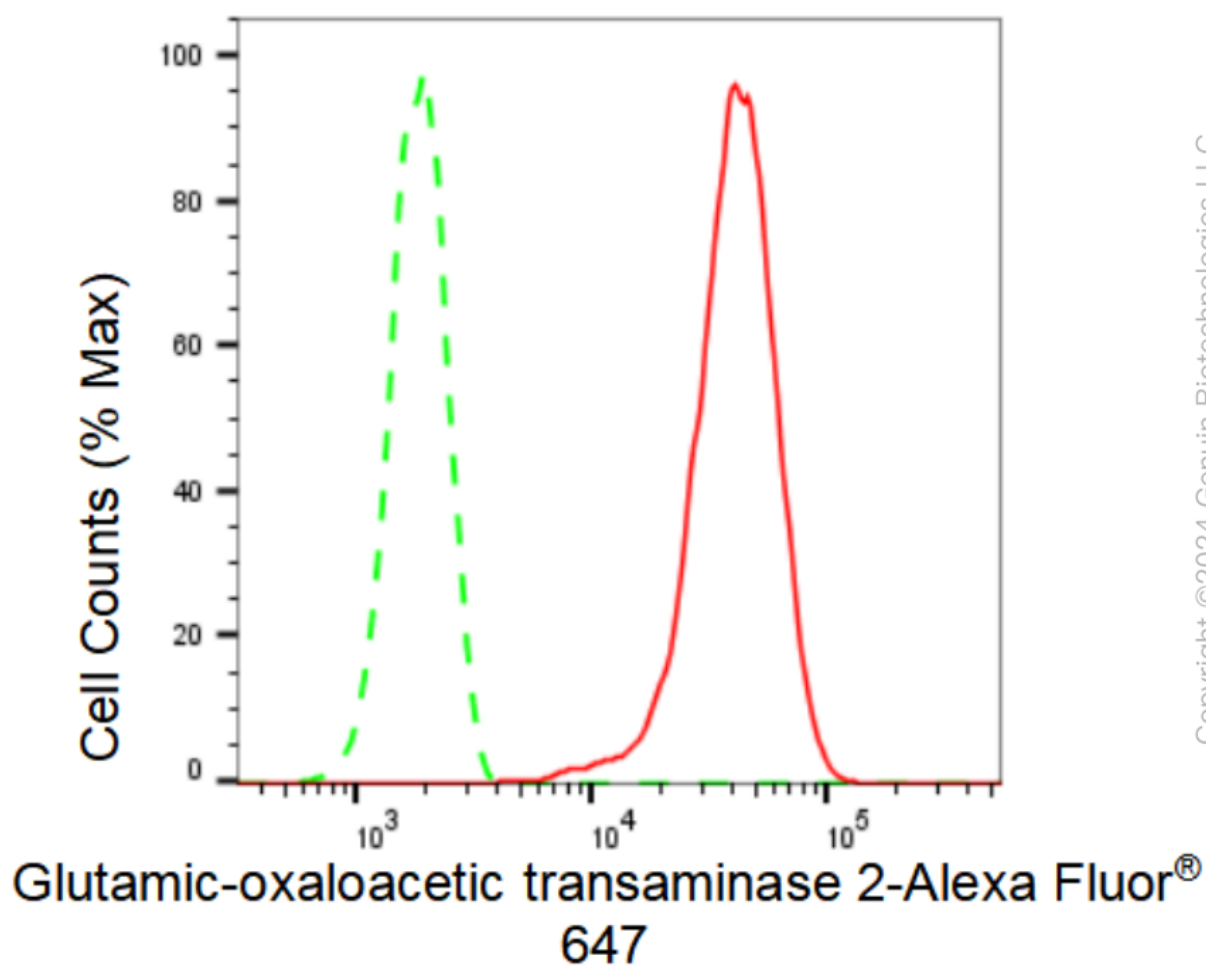
PAGE 2

Flow Cytometry (FCM): 1:2,000

Immunocytochemistry (IC): 1:100-1:1,000

Note: This product is for research use only.

Validation Data



Flow cytometric analysis of Glutamic-oxaloacetic transaminase 2 expression in HepG2 cells using Glutamic-oxaloacetic transaminase 2 antibody (Cat#62249, 1:2,000). Green, isotype control; red, Glutamic-oxaloacetic transaminase 2.

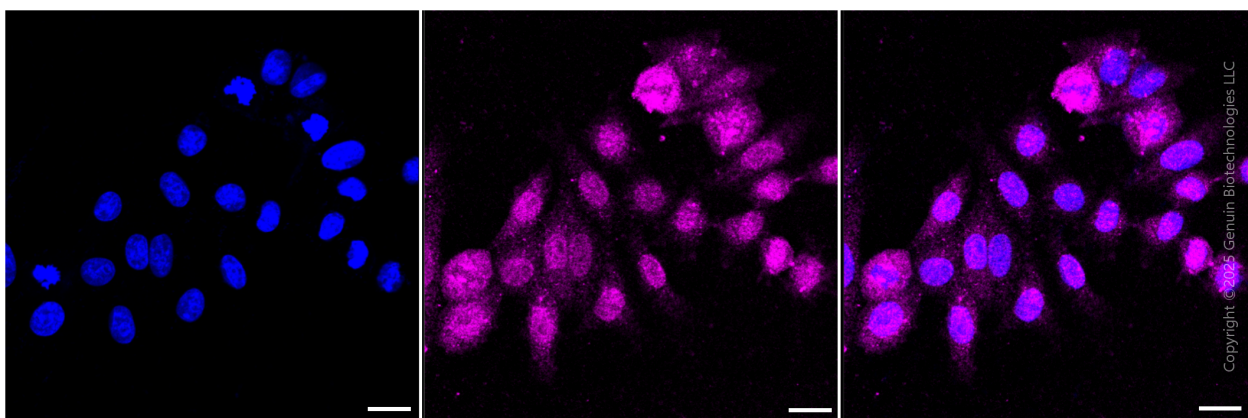
SUPPORT

SUPPORT@GENUINBIOTECH.COM
TEL: +1-540-855-7041

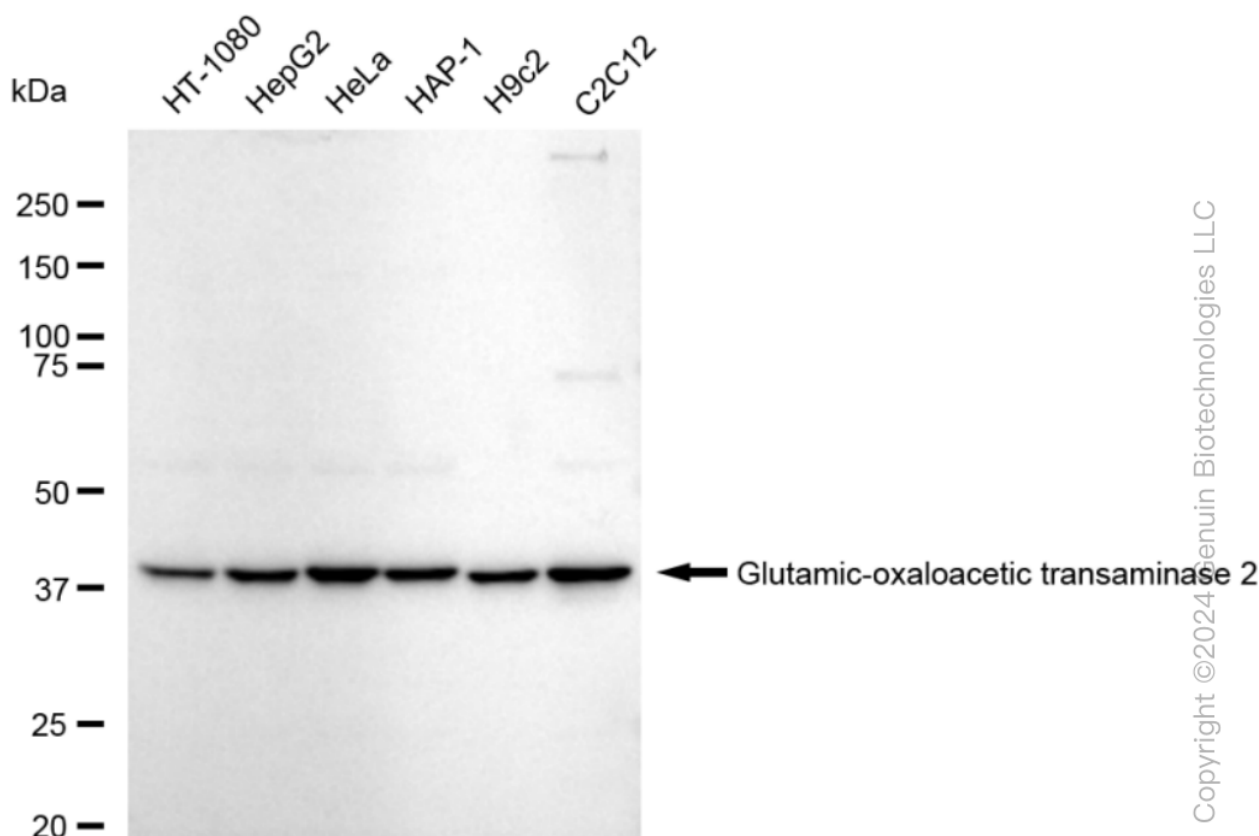
ORDERS

SALES@GENUINBIOTECH.COM
FAX: +1-540-855-7041

WWW.GENUINBIOTECH.COM



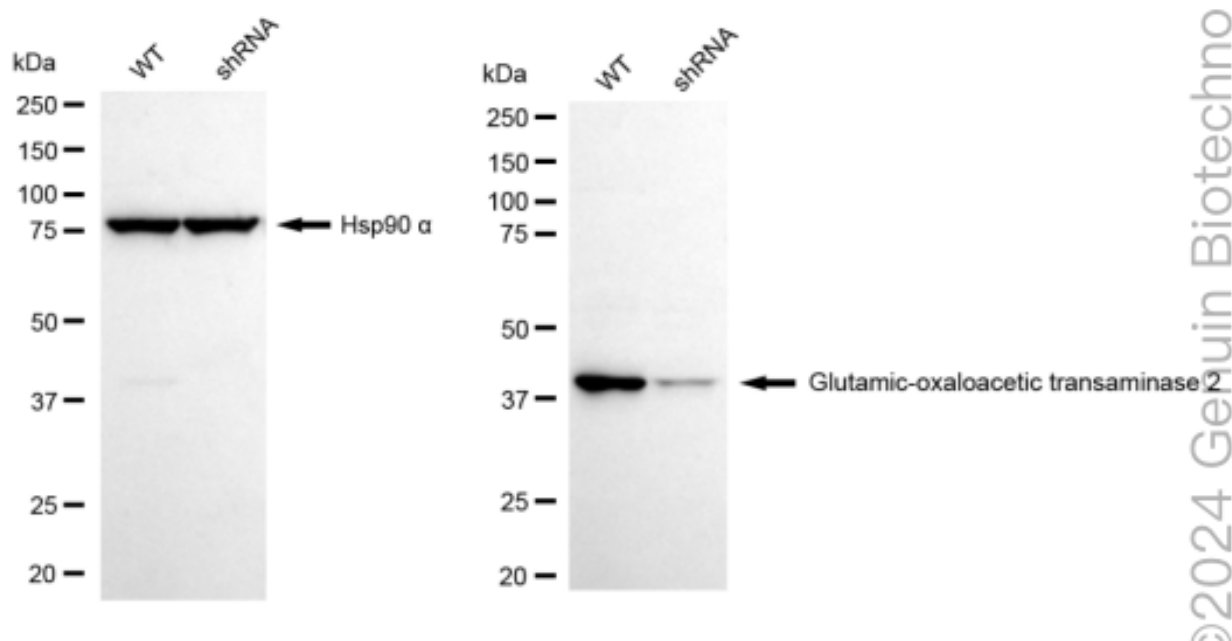
Immunocytochemical staining of HepG2 cells with anti-Glutamic-oxaloacetic transaminase 2 antibody (Cat#62249, 1:1000) . Nuclei were stained blue with DAPI; Glutamic-oxaloacetic transaminase 2 was stained magenta with Alexa Fluor® 647. Images were taken using Leica stellaris 5. Protein abundance based on laser Intensity and smart gain: Medium. Scale bar, 20 µm.



Western blotting analysis using anti-Glutamic-oxaloacetic transaminase 2 antibody (Cat#62249). Total cell lysates (30 µg) from various cell lines were loaded and separated by SDS-PAGE. The blot was incubated with anti-Glutamic-oxaloacetic transaminase 2 antibody (Cat#62249, 1:5,000) and HRP-conjugated goat anti-rabbit secondary antibody (Cat#201, 1:20,000) respectively. Image was developed using FeQ™ ECL Substrate Kit (Cat#226).

KD-Validated Anti-Glutamic-oxaloacetic transaminase 2 Recombinant Rabbit

PAGE 4



Western blotting analysis using anti-Glutamic-oxaloacetic transaminase 2 antibody (Cat#62249). Glutamic-oxaloacetic transaminase 2 expression in wild type (WT) and Glutamic-oxaloacetic transaminase 2 shRNA knockdown (KD) HeLa cells with 30 µg of total cell lysates. Hsp90 α serves as a loading control. The blot was incubated with anti-Glutamic-oxaloacetic transaminase 2 antibody (Cat#62249, 1:5,000) and HRP-conjugated goat anti-rabbit secondary antibody (Cat#201, 1:20,000) respectively. Image was developed using FeQ™ ECL Substrate Kit (Cat#226).

SUPPORT

SUPPORT@GENUINBIOTECH.COM
TEL: +1-540-855-7041

ORDERS

SALES@GENUINBIOTECH.COM
FAX: +1-540-855-7041

WWW.GENUINBIOTECH.COM