

KD-Validated Anti-GATAD2A Recombinant Rabbit Monoclonal Antibody



Catalog #: 62251

Aliases

GATAD2A; GATA Zinc Finger Domain Containing 2A; GATA Zinc Finger Domain-Containing Protein 2A; Transcriptional Repressor P66-Alpha; P66alpha; P66 Alpha; Hp66alpha; P66ALPHA

Background

Gene Name: GATAD2A

NCBI Gene Entry: [54815](#)

UniProt Entry: [Q86YP4](#)

Application Information

Molecular Weight: Predicted, 68 kDa, observed, 68 kDa

Clonality: Rabbit monoclonal antibody

Clone ID: 23GB5685

Species Reactivity: Human, mouse

Applications Tested: Western blotting (WB), flow cytometry (FCM), immunocytochemistry (IC)

Immunogen

A synthesized peptide derived from human p66 alpha

Isotype

Rabbit IgG

Storage Buffer

Supplied in PBS (pH 7.4) containing 50% glycerol, and 0.02% sodium azide.

Storage

Store at -20 °C for one year.

Recommended Dilutions

Western Blotting (WB): 1:1,000-1:5,000

Flow Cytometry (FCM): 1:2,000

Immunocytochemistry (IC): 1:100-1:1,000

Note: This product is for research use only.

Validation Data

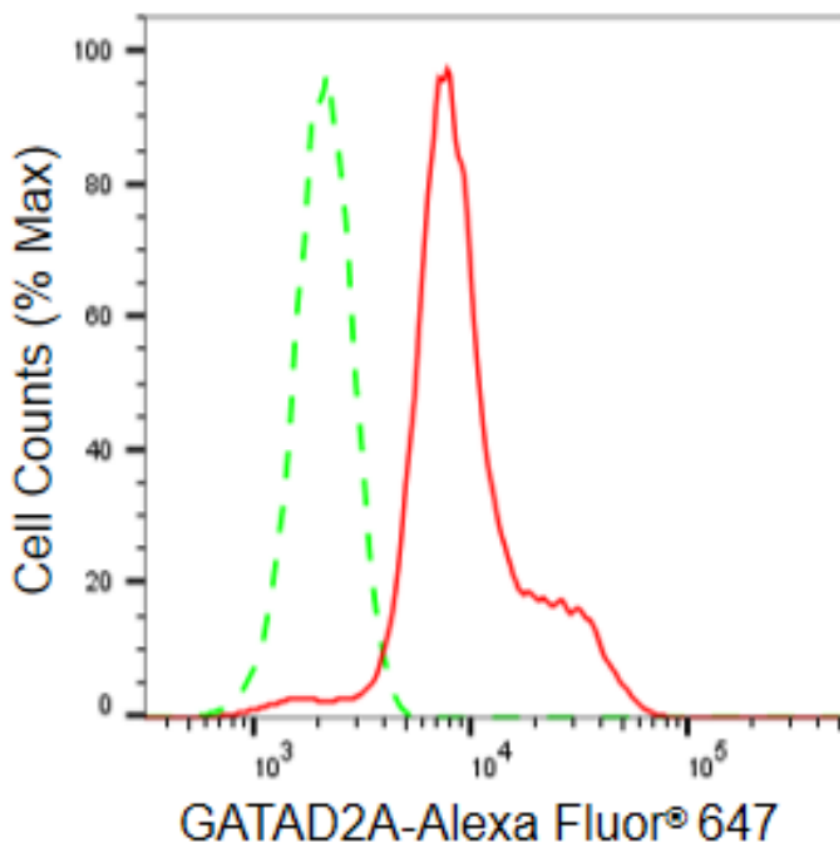
SUPPORT

SUPPORT@GENUINBIOTECH.COM
TEL: +1-540-855-7041

ORDERS

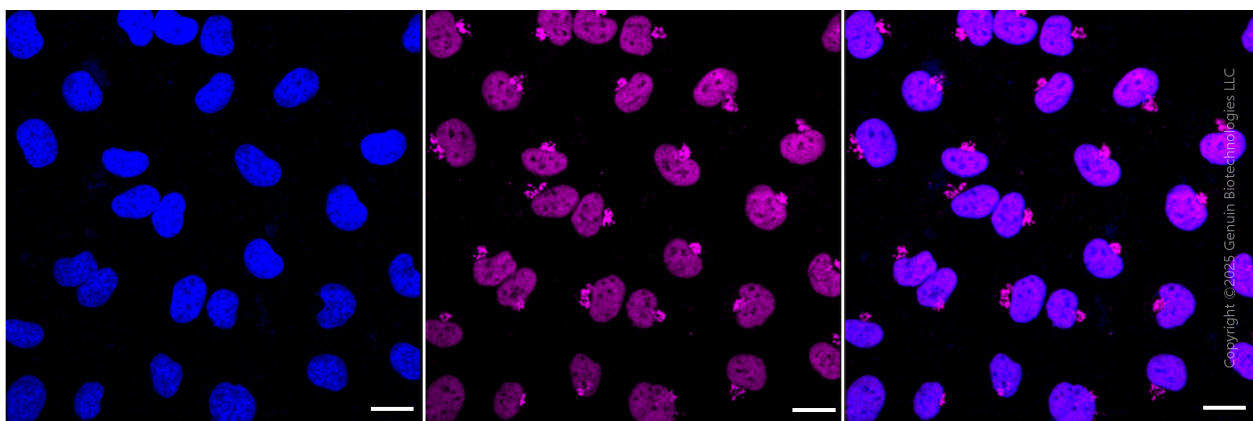
SALES@GENUINBIOTECH.COM
FAX: +1-540-855-7041

WWW.GENUINBIOTECH.COM



Copyright ©2024 Genuin Biotechnologies LLC

Flow cytometric analysis of GATAD2A expression in HeLa cells using GATAD2A antibody (Cat#62251, 1:2,000). Green, isotype control; red, GATAD2A.



Immunocytochemical staining of HeLa cells with anti-GATAD2A antibody (Cat#62251, 1:1,000). Nuclei were stained blue with DAPI; GATAD2A was stained magenta with Alexa Fluor® 647. Images were taken using Leica stellaris 5. Protein abundance based on laser Intensity and smart gain: Medium. Scale bar: 20 μ m.

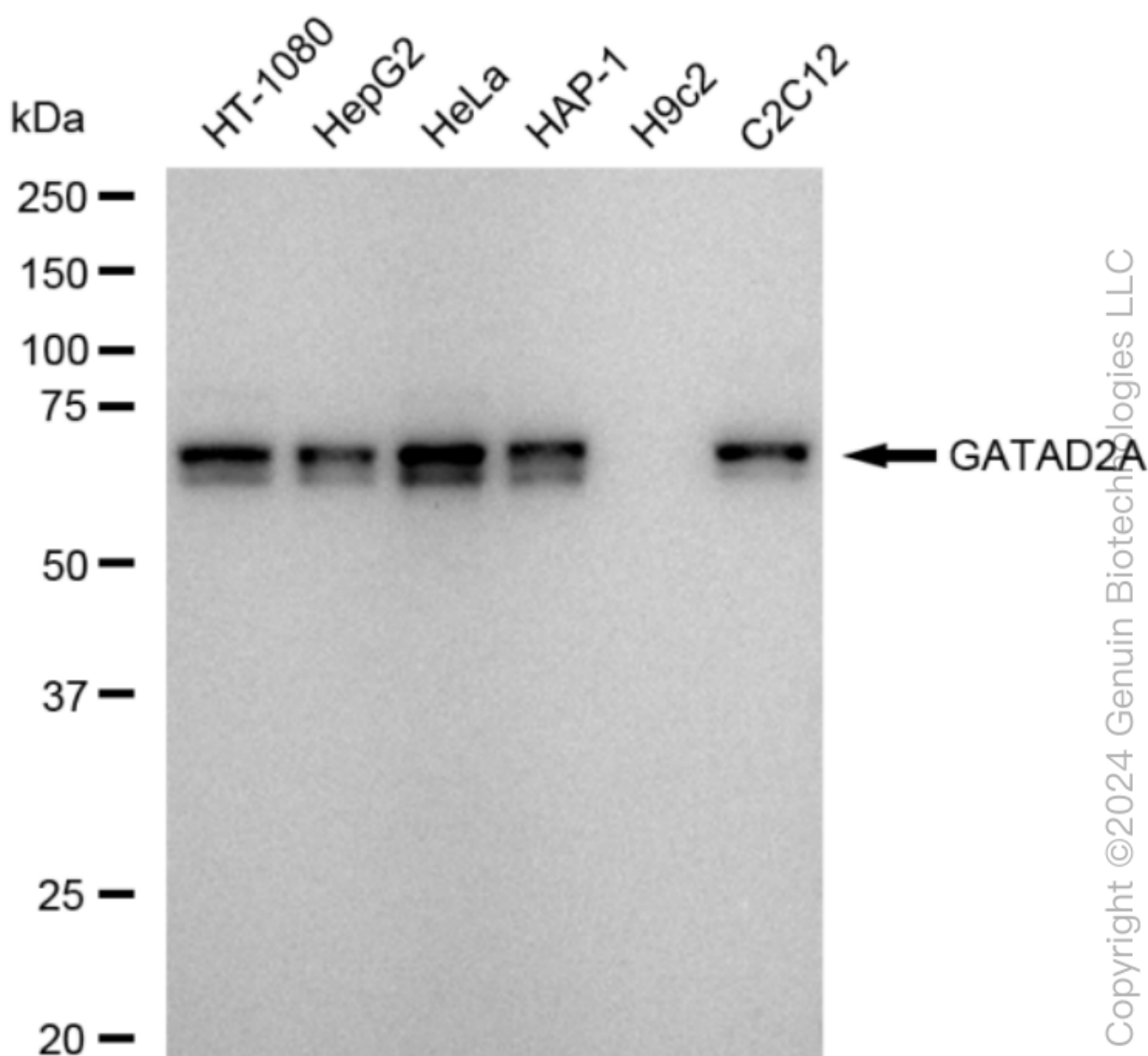
SUPPORT

SUPPORT@GENUINBIOTECH.COM
TEL: +1-540-855-7041

ORDERS

SALES@GENUINBIOTECH.COM
FAX: +1-540-855-7041

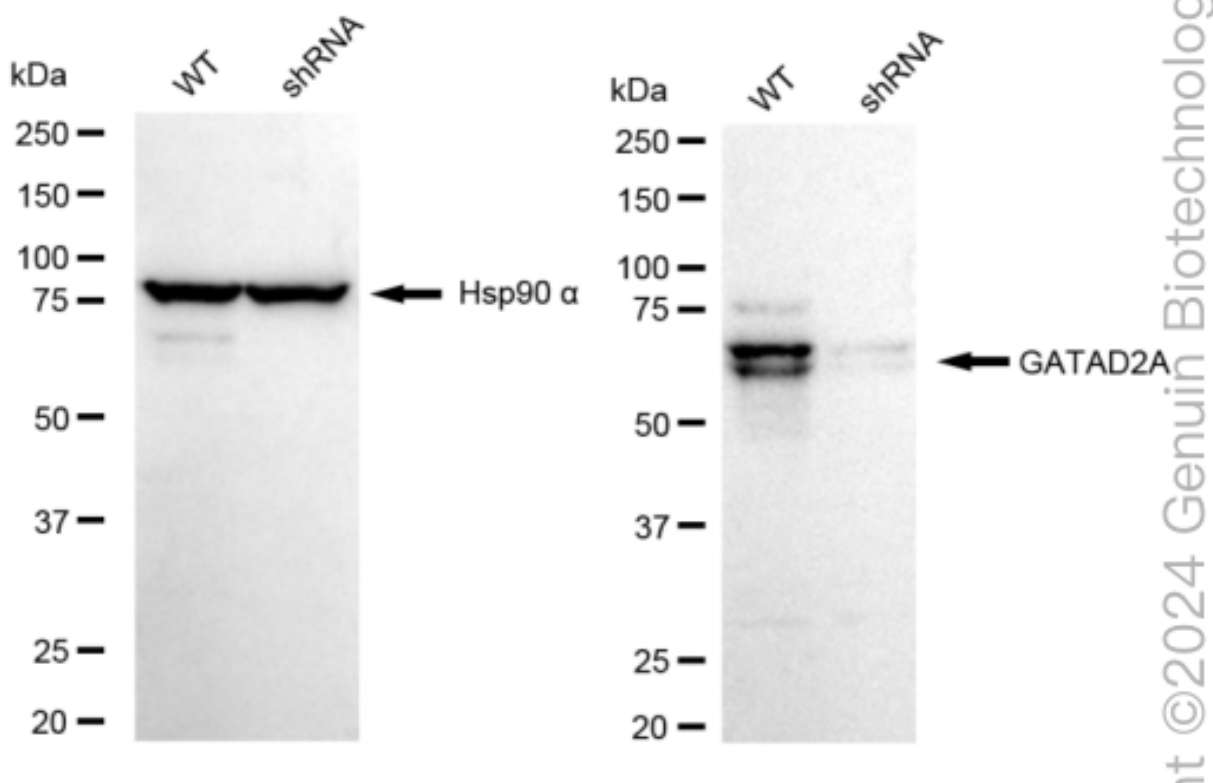
WWW.GENUINBIOTECH.COM



Western blotting analysis using anti-GATAD2A antibody (Cat#62251). Total cell lysates (30 µg) from various cell lines were loaded and separated by SDS-PAGE. The blot was incubated with anti-GATAD2A antibody (Cat#62251, 1:5,000) and HRP-conjugated goat anti-rabbit secondary antibody (Cat#201, 1:20,000) respectively. Image was developed using FeQ™ ECL Substrate Kit (Cat#226).

KD-Validated Anti-GATAD2A Recombinant Rabbit Monoclonal Antibody

PAGE 4



Western blotting analysis using anti-GATAD2A antibody (Cat#62251). GATAD2A expression in wild type (WT) and GATAD2A shRNA knockdown (KD) HeLa cells with 30 µg of total cell lysates. Hsp90 α serves as a loading control. The blot was incubated with anti-GATAD2A antibody (Cat#62251, 1:5,000) and HRP-conjugated goat anti-rabbit secondary antibody (Cat#201, 1:20,000) respectively. Image was developed using FeQ™ ECL Substrate Kit (Cat#226).

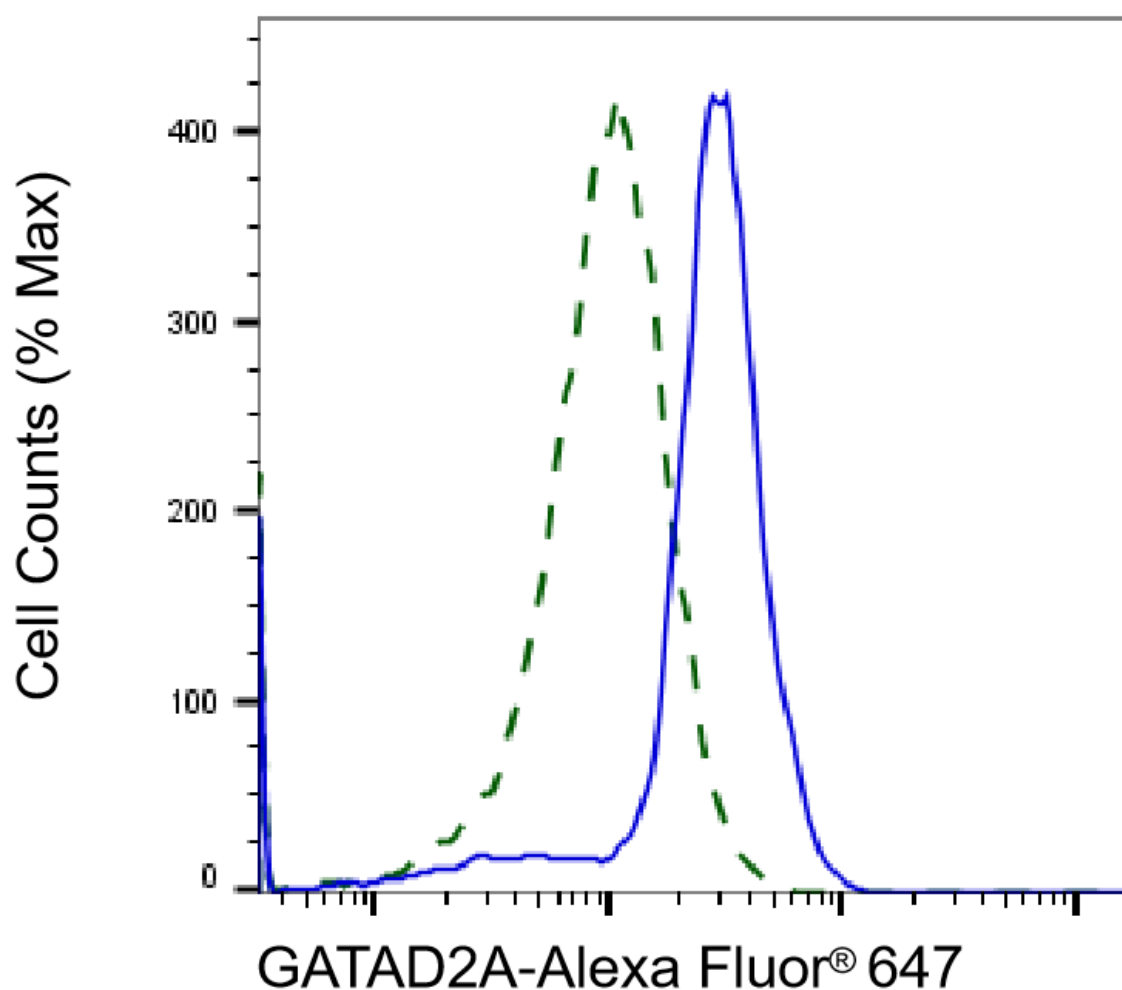
SUPPORT

SUPPORT@GENUINBIOTECH.COM
TEL: +1-540-855-7041

ORDERS

SALES@GENUINBIOTECH.COM
FAX: +1-540-855-7041

WWW.GENUINBIOTECH.COM



Copyright ©2025 Genuin Biotechnologies LLC

Validation of GATAD2A knockdown using flow cytometry. Wild-type(WT, Blue) and knockdown(KD, Green) HeLa cells were stained with anti-GATAD2A antibody (Cat#62251, 1:2,000) and analyzed using BD flow cytometer.