

KD-Validated Anti-Non-SMC Condensin I Complex Subunit D2 Recombinant Rabbit



Catalog #: 62273

Aliases

Non-SMC Condensin I Complex Subunit D2; HCAP-D2; CNAP1; KIAA0159; CAP-D2; Chromosome Condensation-Related SMC-Associated Protein 1; Chromosome-Associated Protein D2; Condensin Complex Subunit 1; XCAP-D2 Homolog; Chromosome Condensation Related SMC Associated Protein 1; Non-SMC Condensin I Complex, Subunit D2; MCPH21; CAPD2

Background

Gene Name: NCAPD2

NCBI Gene Entry: [9918](#)

UniProt Entry: [Q15021](#)

Application Information

Molecular Weight: Predicted, 157 kDa, observed, 150 kDa

Clonality: Rabbit monoclonal antibody

Clone ID: 24GB75

Species Reactivity: Human, mouse, rat

Applications Tested: Western blotting (WB), flow cytometry (FCM), immunocytochemistry (IC)

Immunogen

A synthesized peptide derived from human CNAP1

Isotype

Rabbit IgG

Storage Buffer

Supplied in PBS (pH 7.4) containing 50% glycerol, and 0.02% sodium azide.

Storage

Store at -20 °C for one year.

Recommended Dilutions

Western Blotting (WB): 1:1,000-1:5,000

Flow Cytometry (FCM): 1:2,000

Immunocytochemistry (IC): 1:100-1:1,000

SUPPORT

SUPPORT@GENUINBIOTECH.COM
TEL: +1-540-855-7041

ORDERS

SALES@GENUINBIOTECH.COM
FAX: +1-540-855-7041

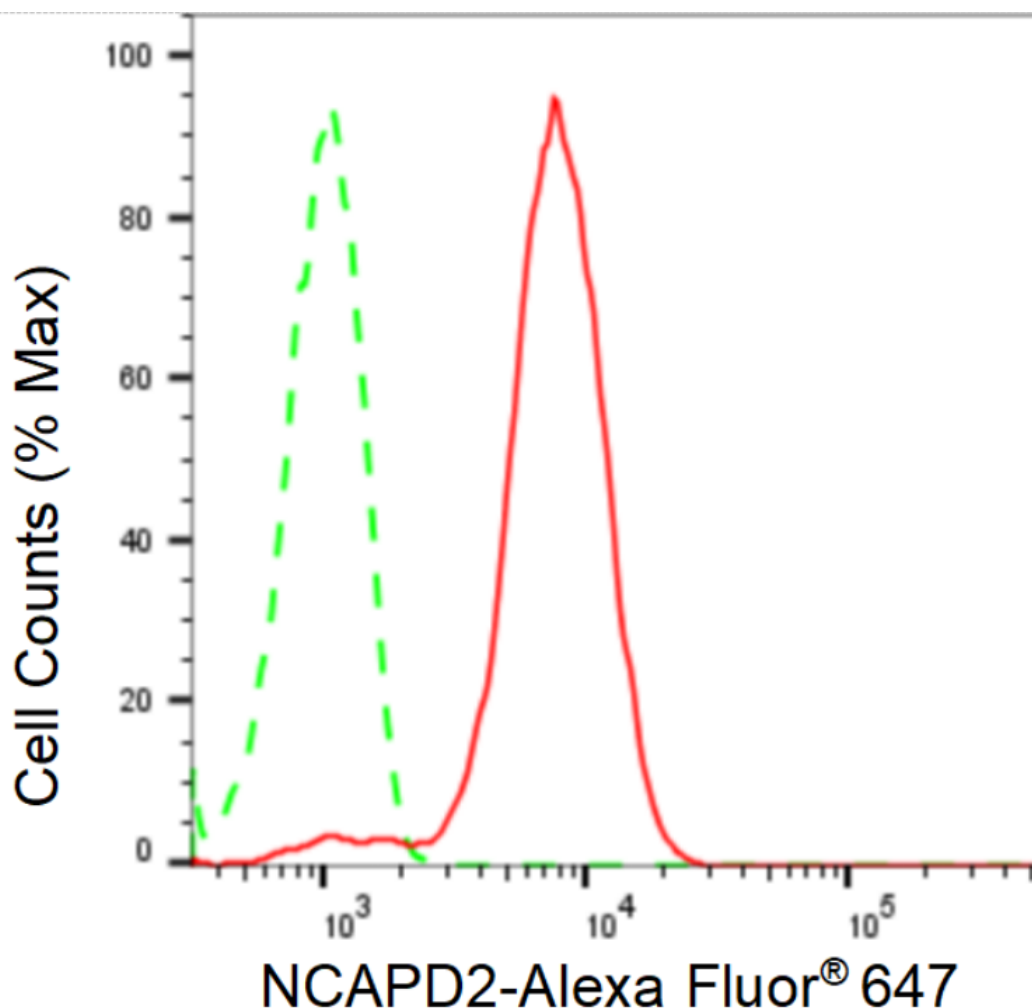
WWW.GENUINBIOTECH.COM

KD-Validated Anti-Non-SMC Condensin I Complex Subunit D2 Recombinant Rabbit

PAGE 2

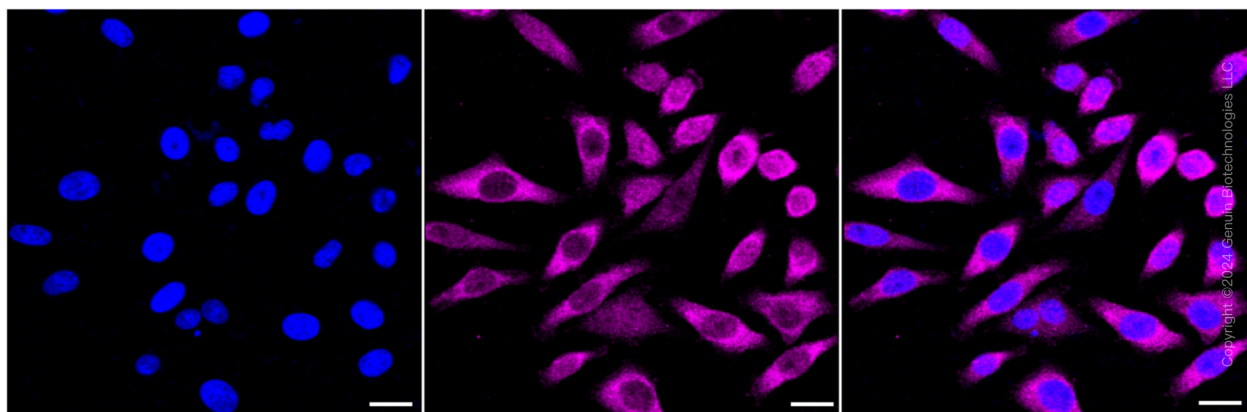
Note: This product is for research use only.

Validation Data



Copyright ©2024 Genuin Biotechnologies LLC

Flow cytometric analysis of NCAPD2 expression in HepG2 cells using NCAPD2 antibody (Cat#62273, 1:2,000). Green, isotype control; red, NCAPD2.



Copyright ©2024 Genuin Biotechnologies LLC

SUPPORT

SUPPORT@GENUINBIOTECH.COM
TEL: +1-540-855-7041

ORDERS

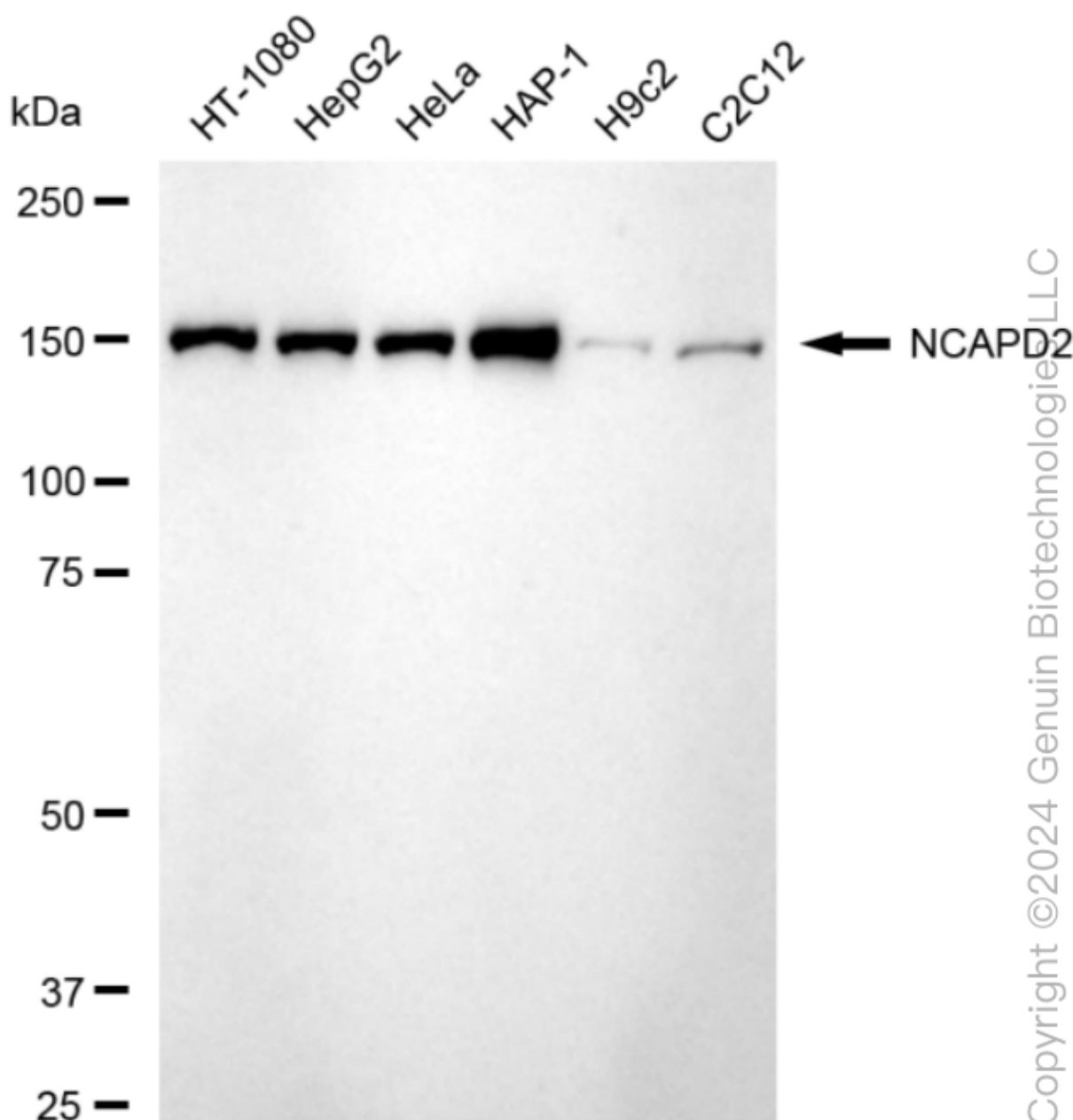
SALES@GENUINBIOTECH.COM
FAX: +1-540-855-7041

WWW.GENUINBIOTECH.COM

KD-Validated Anti-Non-SMC Condensin I Complex Subunit D2 Recombinant Rabbit

PAGE 3

Immunocytochemical staining of HepG2 cells with anti-NCAPD2 antibody (Cat#62273, 1:1,000). Nuclei were stained blue with DAPI; NCAPD2 was stained magenta with Alexa Fluor® 647. Images were taken using Leica stellaris 5. Protein abundance based on laser Intensity and smart gain: Medium. Scale bar: 20 μ m.



Western blotting analysis using anti-NCAPD2 antibody (Cat#62273). Total cell lysates (30 μ g) from various cell lines were loaded and separated by SDS-PAGE. The blot was incubated with anti-NCAPD2 antibody (Cat#62273, 1:5,000) and HRP-conjugated goat anti-rabbit secondary antibody (Cat#201, 1:20,000) respectively. Image was developed using FeQ™ ECL Substrate Kit (Cat#226).

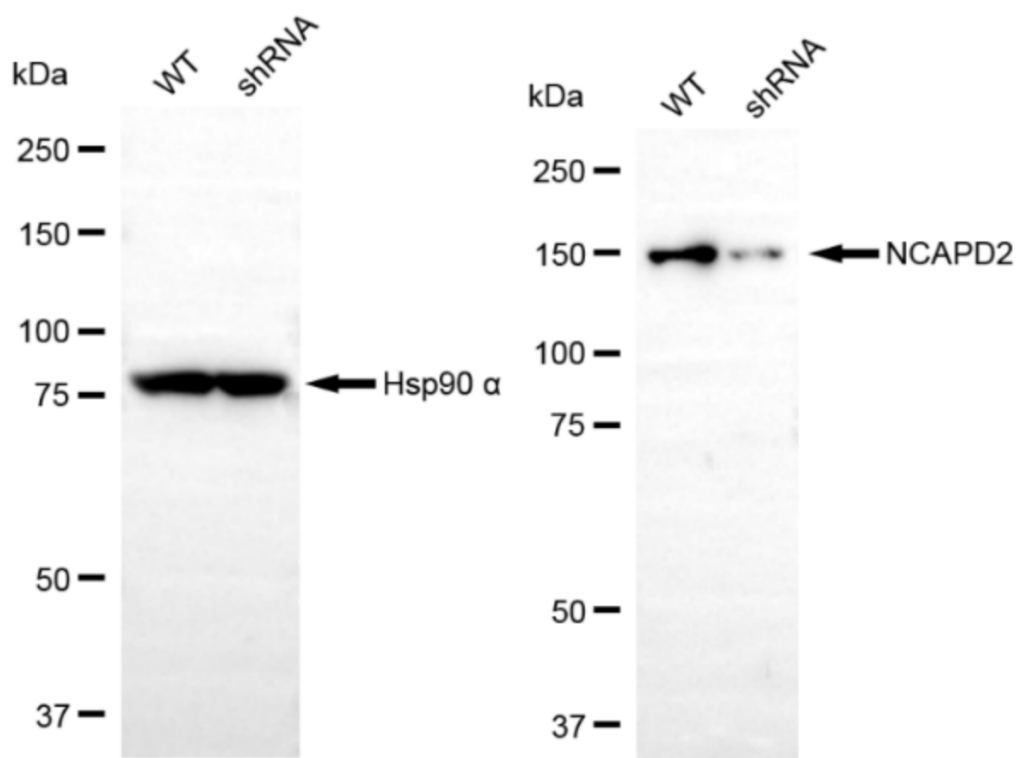
SUPPORT

SUPPORT@GENUINBIOTECH.COM
TEL: +1-540-855-7041

ORDERS

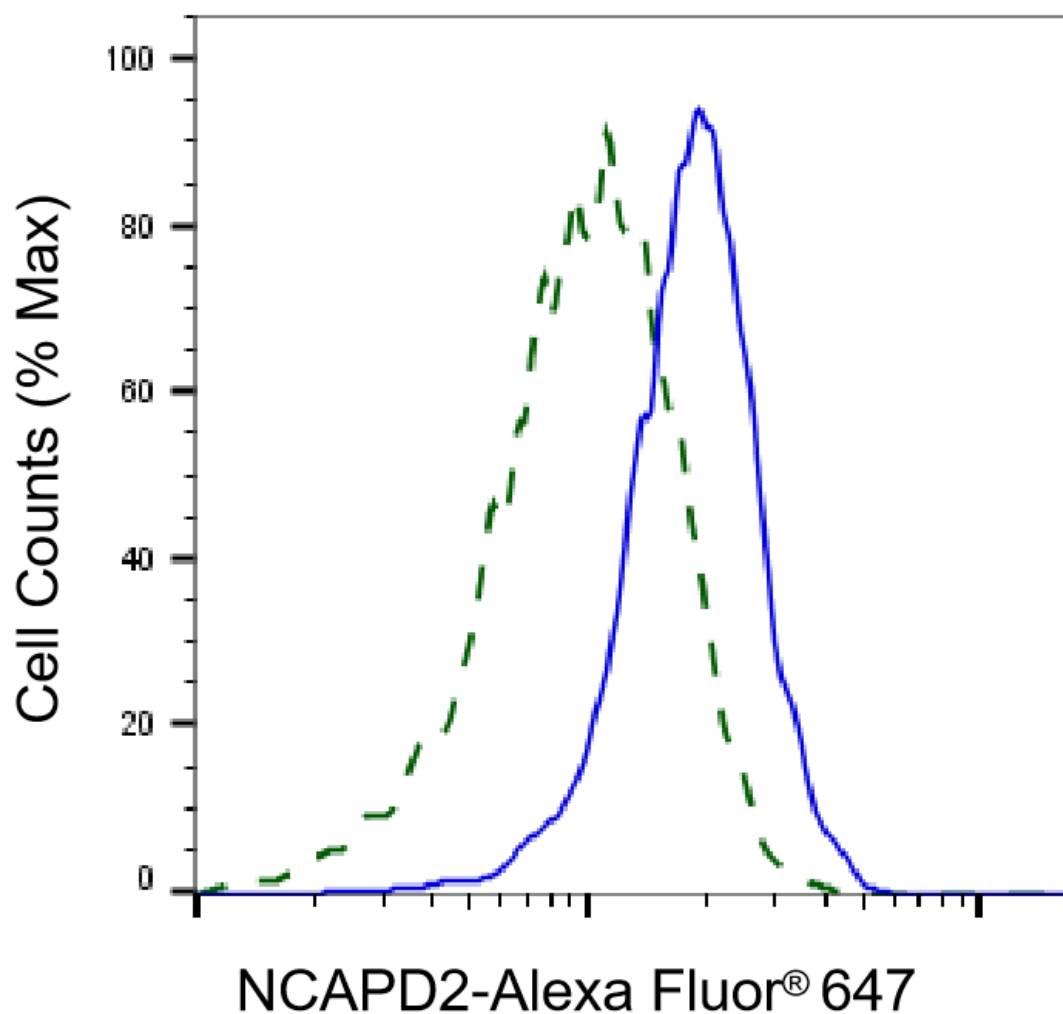
SALES@GENUINBIOTECH.COM
FAX: +1-540-855-7041

WWW.GENUINBIOTECH.COM



Copyright ©2024 Genuin Biotechnologies LLC

Western blotting analysis using anti-NCAPD2 antibody (Cat#62273). NCAPD2 expression in wild type (WT) and NCAPD2 shRNA knockdown (KD) HeLa cells with 20 μ g of total cell lysates. Hsp90 α serves as a loading control. The blot was incubated with anti-NCAPD2 antibody (Cat#62273, 1:5,000) and HRP-conjugated goat anti-rabbit secondary antibody (Cat#201, 1:20,000) respectively. Image was developed using NaQTM ECL Substrate Kit (Cat#716).



Copyright ©2025 Genuin Biotechnologies LLC

Validation of NCAPD2 knockdown using flow cytometry. Wild-type(WT, Blue) and knockdown(KD, Green) HeLa cells were stained with anti-NCAPD2 antibody (Cat#62273, 1:2,000) and analyzed using BD flow cytometer.