

KD-Validated Anti-Musashi RNA Binding Protein 2 Recombinant Rabbit Monoclonal



Catalog #: 62304

Aliases

Musashi RNA Binding Protein 2; RNA-Binding Protein Musashi Homolog 2; Musashi-2; Musashi Homolog 2 (Drosophila); Musashi Homolog 2; MSI2H

Background

Gene Name: MSI2

NCBI Gene Entry: [124540](#)

UniProt Entry: [Q96DH6](#)

Application Information

Molecular Weight: Predicted, 35 kDa, observed, 35 kDa

Clonality: Rabbit monoclonal antibody

Clone ID: 24GB225

Species Reactivity: Human, mouse, rat

Applications Tested: Western blotting (WB), flow cytometry (FCM), immunocytochemistry (IC)

Immunogen

A synthesized peptide derived from human MSI2

Isotype

Rabbit IgG

Storage Buffer

Supplied in PBS (pH 7.4) containing 50% glycerol, and 0.02% sodium azide.

Storage

Store at -20 °C for one year.

Recommended Dilutions

Western Blotting (WB): 1:1,000-1:5,000

Flow Cytometry (FCM): 1:2,000

Immunocytochemistry (IC): 1:100-1:1,000

Note: This product is for research use only.

Validation Data

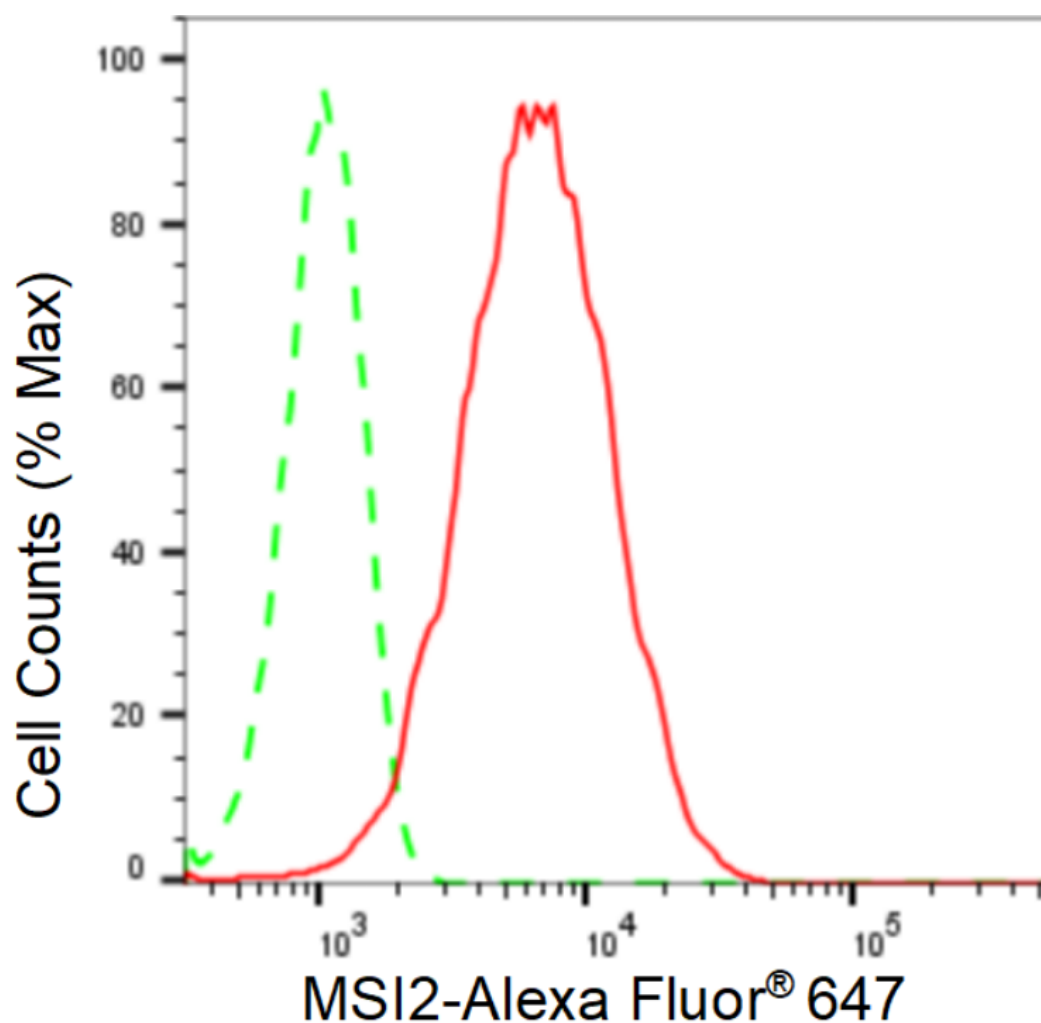
SUPPORT

SUPPORT@GENUINBIOTECH.COM
TEL: +1-540-855-7041

ORDERS

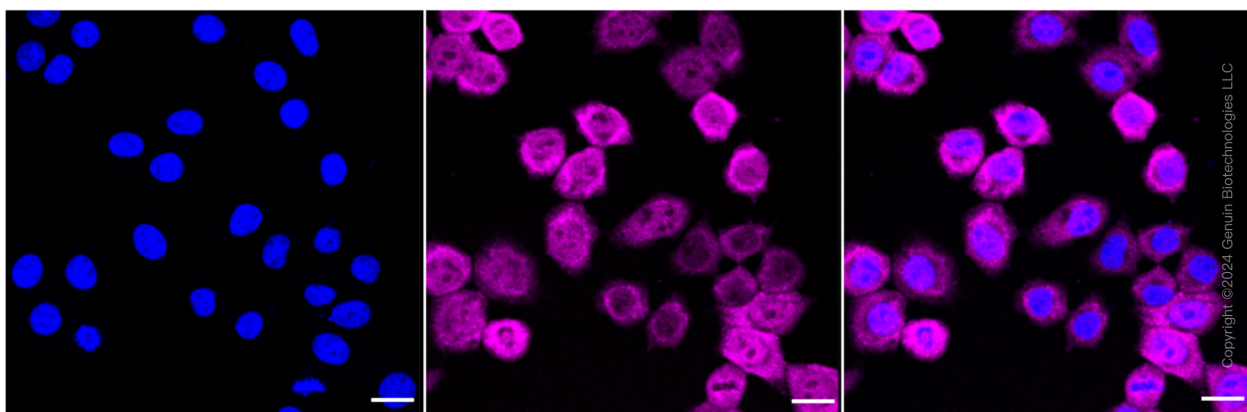
SALES@GENUINBIOTECH.COM
FAX: +1-540-855-7041

WWW.GENUINBIOTECH.COM



Copyright ©2024 Genuin Biotechnologies LLC

Flow cytometric analysis of MSI2 expression in HepG2 cells using MSI2 antibody (Cat#62304, 1:2,000). Green, isotype control; red, MSI2.



Copyright ©2024 Genuin Biotechnologies LLC

Immunocytochemical staining of HepG2 cells with anti-MSI2 antibody (Cat#62304, 1:1,000). Nuclei were stained blue with DAPI; MSI2 was stained magenta with Alexa Fluor® 647. Images were taken using Leica stellaris 5. Protein abundance based on laser Intensity and smart gain:

SUPPORT

SUPPORT@GENUINBIOTECH.COM
TEL: +1-540-855-7041

ORDERS

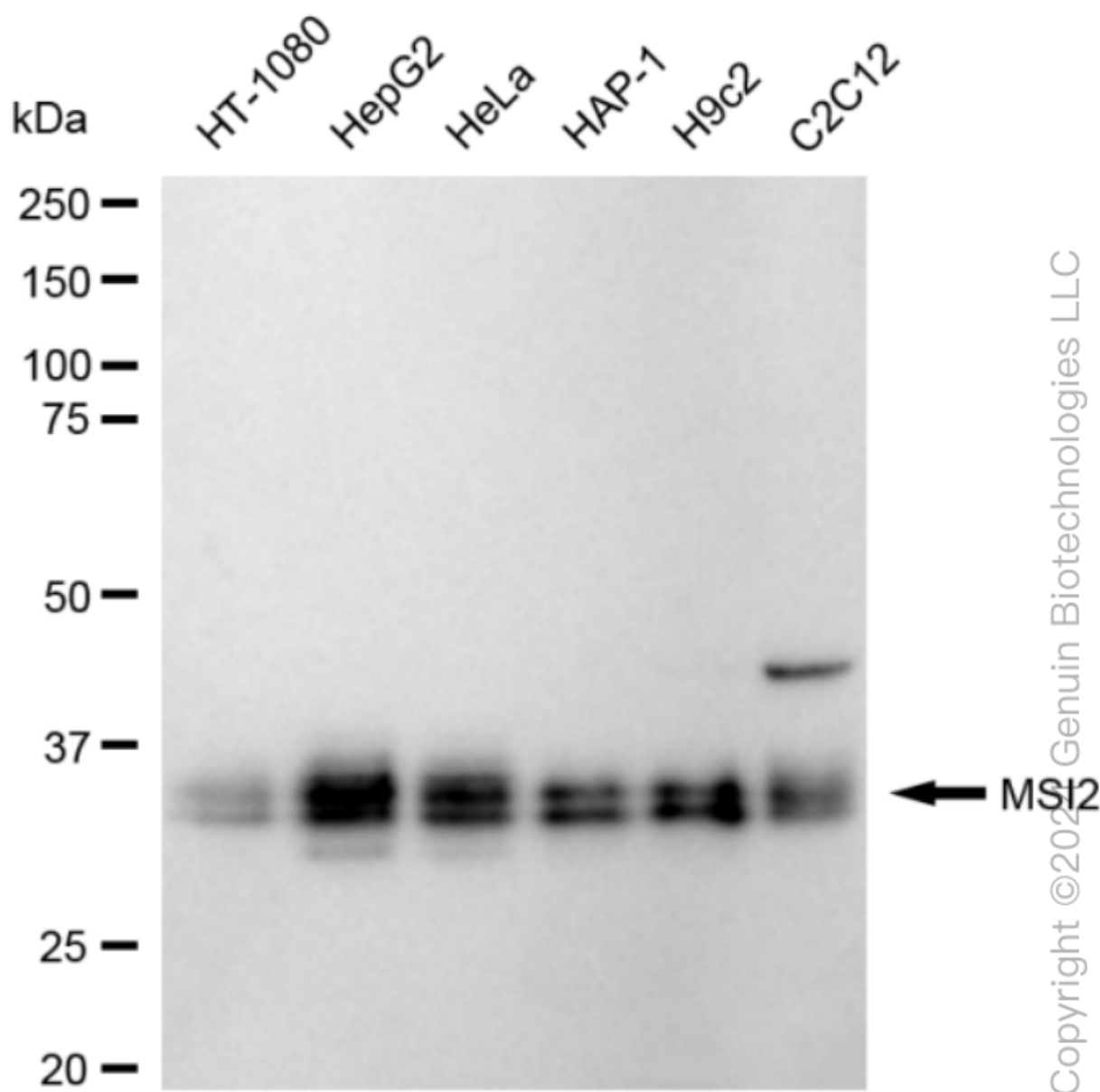
SALES@GENUINBIOTECH.COM
FAX: +1-540-855-7041

WWW.GENUINBIOTECH.COM

KD-Validated Anti-Musashi RNA Binding Protein 2 Recombinant Rabbit Monoclonal

PAGE 3

High. Scale bar: 20 μ m.



Western blotting analysis using anti-MSI2 antibody (Cat#62304). Total cell lysates (30 μ g) from various cell lines were loaded and separated by SDS-PAGE. The blot was incubated with anti-MSI2 antibody (Cat#62304, 1:5,000) and HRP-conjugated goat anti-rabbit secondary antibody (Cat#201, 1:20,000) respectively. Image was developed using FeQ™ ECL Substrate Kit (Cat#226).

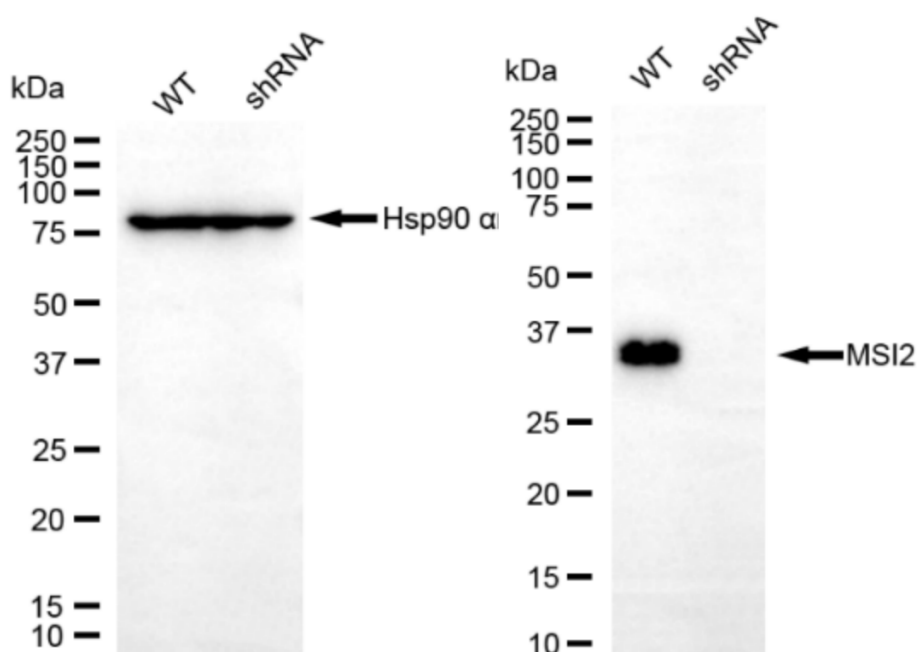
SUPPORT

SUPPORT@GENUINBIOTECH.COM
TEL: +1-540-855-7041

ORDERS

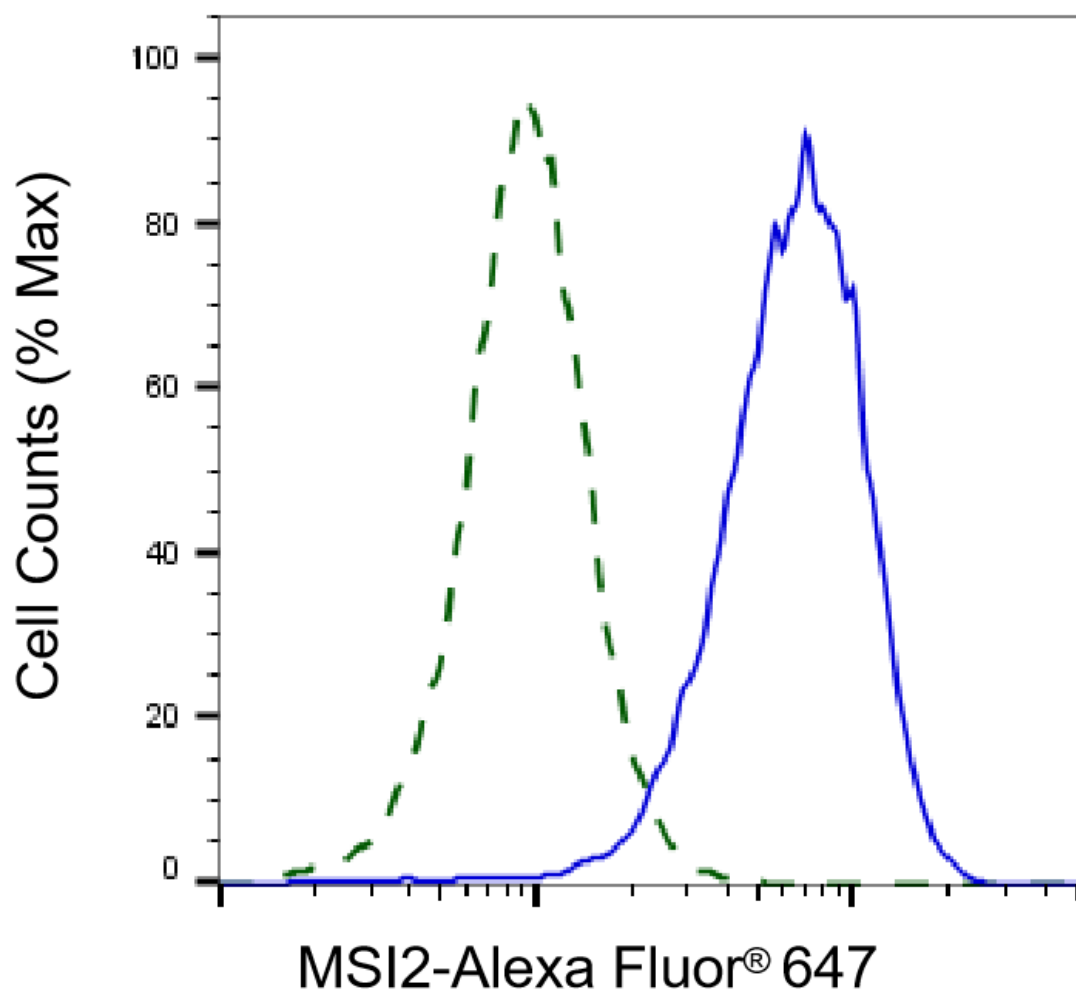
SALES@GENUINBIOTECH.COM
FAX: +1-540-855-7041

WWW.GENUINBIOTECH.COM



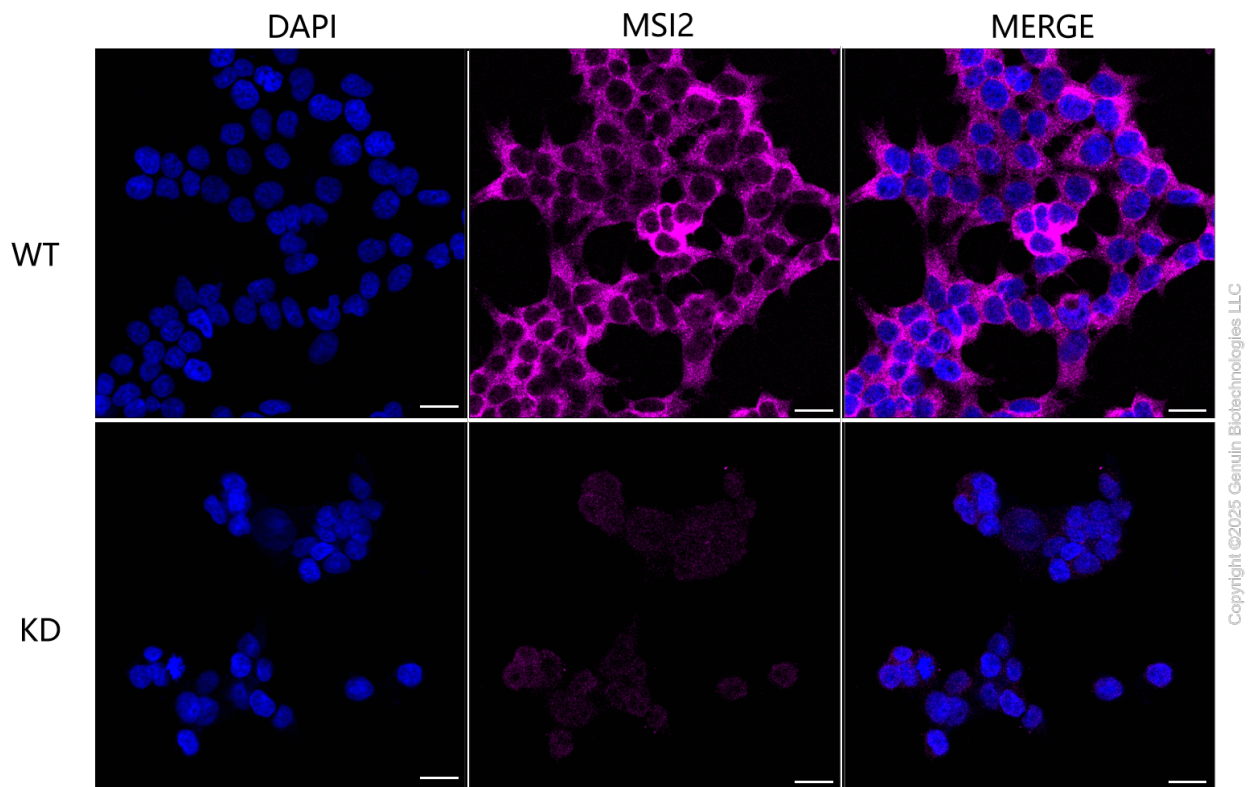
Copyright ©2024 Genuin Biotechnologies LLC

Western blotting analysis using anti-MSI2 antibody (Cat#62304). MSI2 expression in wild type (WT) and MSI2 shRNA knockdown (KD) HeLa cells with 20 µg of total cell lysates. β-Tubulin serves as a loading control. The blot was incubated with anti-MSI2 antibody (Cat#62304, 1:5,000) and HRP-conjugated goat anti-rabbit secondary antibody (Cat#201, 1:20,000) respectively. Image was developed using NaQ™ ECL Substrate Kit (Cat#716).



Copyright ©2025 Genuin Biotechnologies LLC

Validation of MSI2 knockdown using flow cytometry. Wild-type(WT, Blue) and knockdown(KD, Green) HeLa cells were stained with anti-MSI2 antibody (Cat#62304, 1:2,000) and analyzed using BD flow cytometer.



Immunocytochemical staining of HeLa cells using anti-MSI2 antibody (Cat#62304, 1:1,000), Top panel: wild-type (WT); Bottom panel: MSI2 shRNA knockdown (KD). Nuclei were stained blue with DAPI; MSI2 was stained magenta with Alexa Fluor® 647. Scale bar, 20 μ m. Permeabilization: Triton.