

KD-Validated Anti-MYD88 Recombinant Rabbit Monoclonal Antibody



Catalog #: 62307

Aliases

MYD88 Innate Immune Signal Transduction Adaptor; Myeloid Differentiation Primary Response Protein MyD88; Myeloid Differentiation Primary Response Gene (88); Myeloid Differentiation Primary Response 88; TLR Adaptor MYD88; Mutant Myeloid Differentiation Primary Response 88; MYD88D; IMD68; WM1

Background

Gene Name: MYD88

NCBI Gene Entry: [4615](#)

UniProt Entry: [Q99836](#)

Application Information

Molecular Weight: Predicted, 33 kDa, observed, 33 kDa

Clonality: Rabbit monoclonal antibody

Clone ID: 24GB240

Species Reactivity: Human

Applications Tested: Western blotting (WB), flow cytometry (FCM), immunocytochemistry (IC)

Immunogen

A synthesized peptide derived from human MyD88

Isotype

Rabbit IgG

Storage Buffer

Supplied in PBS (pH 7.4) containing 50% glycerol, and 0.02% sodium azide.

Storage

Store at -20 °C for one year.

Recommended Dilutions

Western Blotting (WB): 1:1,000-1:5,000, Flow Cytometry (FCM): 1:2,000, Immunocytochemistry (IC): 1:100-1:1,000

Note: This product is for research use only.

SUPPORT

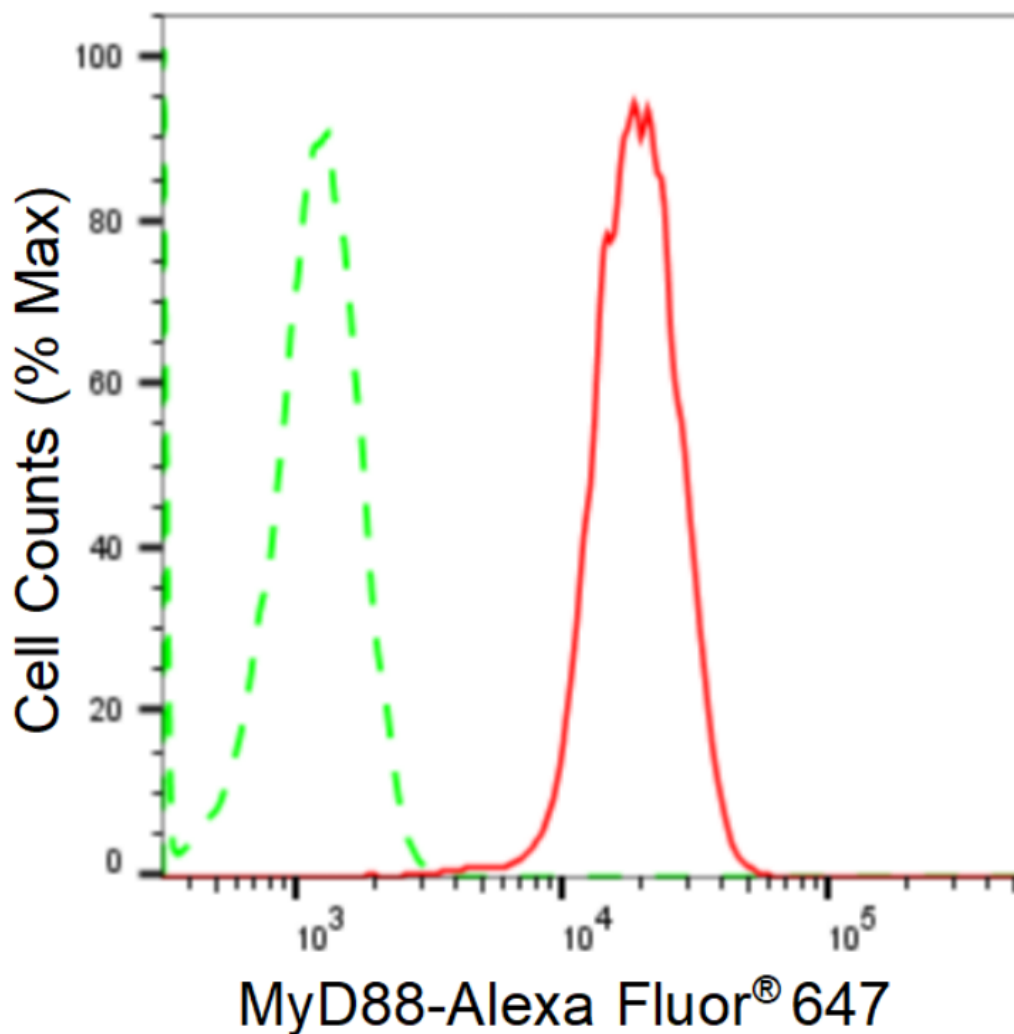
SUPPORT@GENUINBIOTECH.COM
TEL: +1-540-855-7041

ORDERS

SALES@GENUINBIOTECH.COM
FAX: +1-540-855-7041

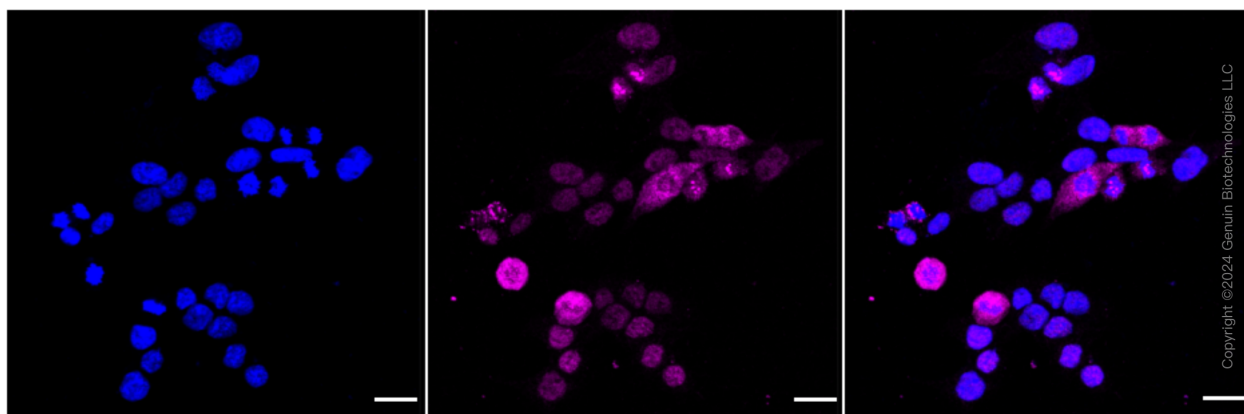
WWW.GENUINBIOTECH.COM

Validation Data



Copyright ©2024 Genuin Biotechnologies LLC

Flow cytometric analysis of MyD88 expression in HAP-1 cells using anti-MyD88 antibody (Cat#62307, 1:2,000). Green, isotype control; red, MyD88.



Immunocytochemical staining of HAP-1 cells with anti-MyD88 antibody (Cat#62307, 1:1,000).

SUPPORT

SUPPORT@GENUINBIOTECH.COM
TEL: +1-540-855-7041

ORDERS

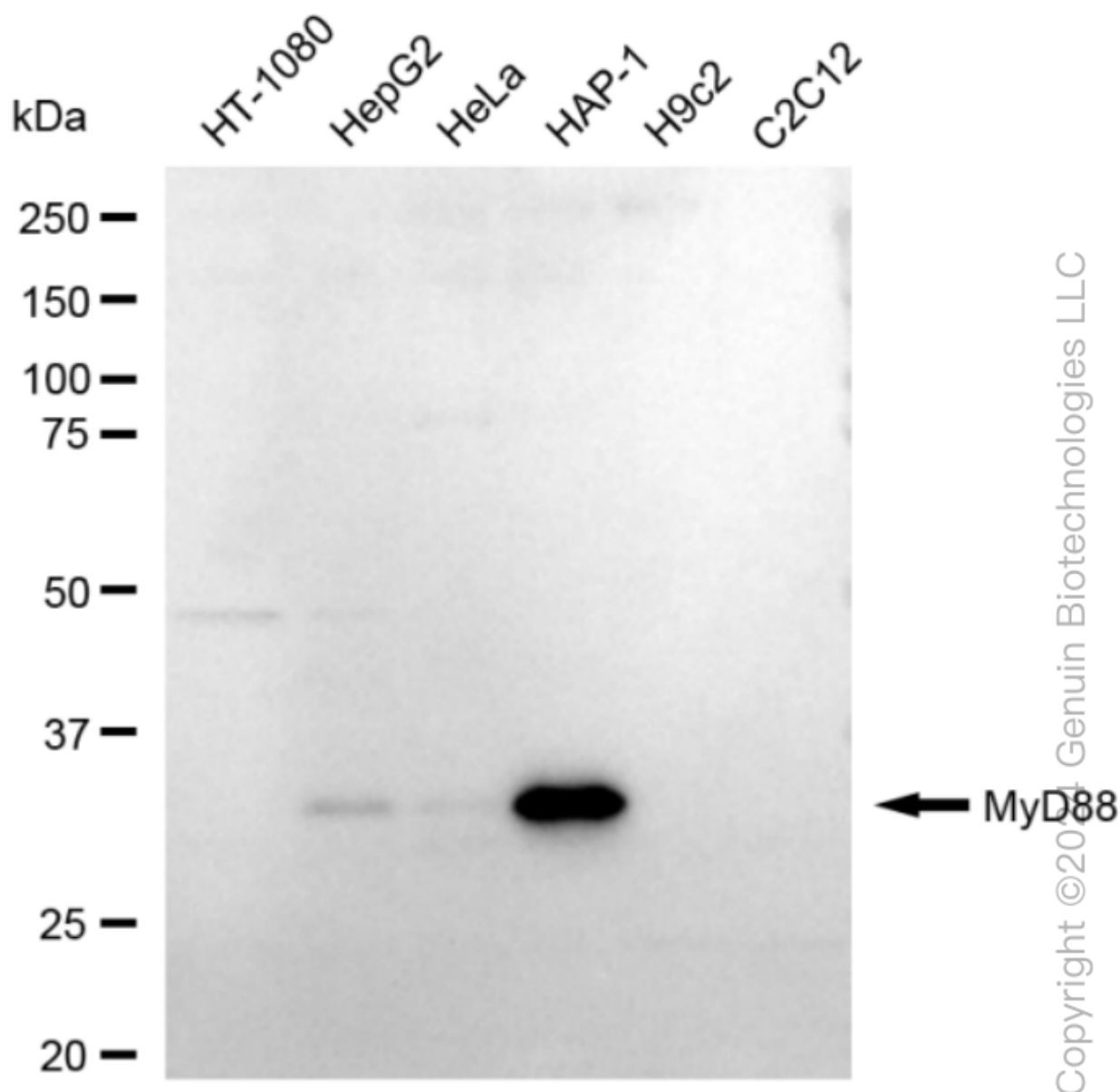
SALES@GENUINBIOTECH.COM
FAX: +1-540-855-7041

WWW.GENUINBIOTECH.COM

KD-Validated Anti-MYD88 Recombinant Rabbit Monoclonal Antibody

PAGE 3

Nuclei were stained blue with DAPI; MyD88 was stained magenta with Alexa Fluor® 647. Images were taken using Leica stellaris 5. Protein abundance based on laser Intensity and smart gain: High. Scale bar: 20 μ m.



Western blotting analysis using anti-MyD88 antibody (Cat#62307). Total cell lysates (30 μ g) from various cell lines were loaded and separated by SDS-PAGE. The blot was incubated with anti-MyD88 antibody (Cat#62307, 1:5,000) and HRP-conjugated goat anti-rabbit secondary antibody (Cat#201, 1:20,000) respectively. Image was developed using FeQ™ ECL Substrate Kit (Cat#226).

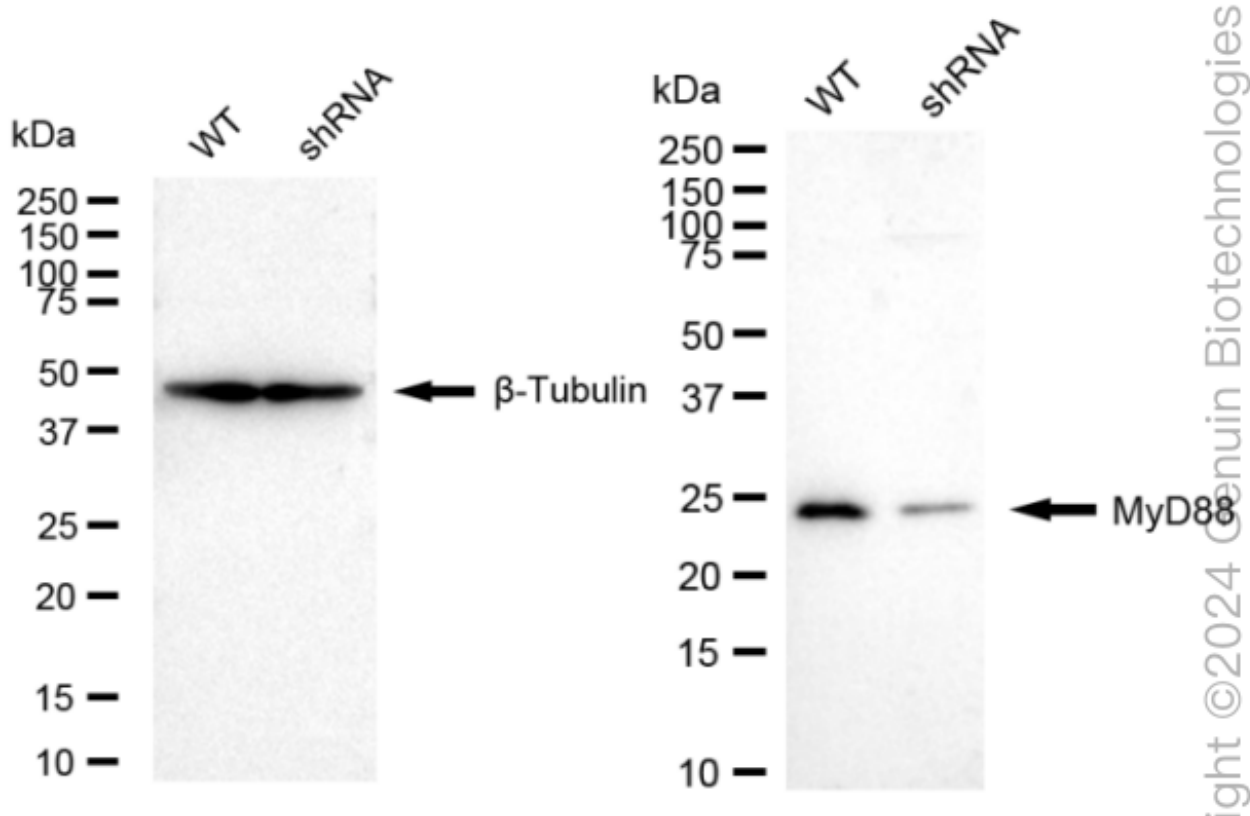
SUPPORT

SUPPORT@GENUINBIOTECH.COM
TEL: +1-540-855-7041

ORDERS

SALES@GENUINBIOTECH.COM
FAX: +1-540-855-7041

WWW.GENUINBIOTECH.COM



Western blotting analysis using anti-MyD88 antibody (Cat#62307). MyD88 expression in wild type (WT) and MyD88 shRNA knockdown (KD) HT-1080 cells with 20 µg of total cell lysates. β-Tubulin serves as a loading control. The blot was incubated with anti-MyD88 antibody (Cat#62307, 1:5,000) and HRP-conjugated goat anti-rabbit secondary antibody (Cat#201, 1:20,000) respectively. Image was developed using NaQ™ ECL Substrate Kit (Cat#716).