

KD-Validated Anti-MAP3K2 Recombinant Rabbit Monoclonal Antibody



Catalog #: 62312

Aliases

Mitogen-Activated Protein Kinase Kinase Kinase 2; MEKK2B; MEKK2; MAPK/ERK Kinase Kinase 2; MAP/ERK Kinase Kinase 2; MEK Kinase 2; MEKK 2; EC 2.7.11.25; MAPKKK2

Background

Gene Name: MAP3K2

NCBI Gene Entry: [10746](#)

UniProt Entry: [Q9Y2U5](#)

Application Information

Molecular Weight: Predicted, 70 kDa, observed, 70 kDa

Clonality: Rabbit monoclonal antibody

Clone ID: 24GB260

Species Reactivity: Human, mouse, rat

Applications Tested: Western blotting (WB), flow cytometry (FCM), immunocytochemistry (IC)

Immunogen

A synthesized peptide derived from human MEKK2

Isotype

Rabbit IgG

Storage Buffer

Supplied in PBS (pH 7.4) containing 50% glycerol, and 0.02% sodium azide.

Storage

Store at -20 °C for one year.

Recommended Dilutions

Western Blotting (WB): 1:4,000-1:20,000

Flow Cytometry (FCM): 1:2,000

Immunocytochemistry (IC): 1:100-1:1,000

Note: This product is for research use only.

Validation Data

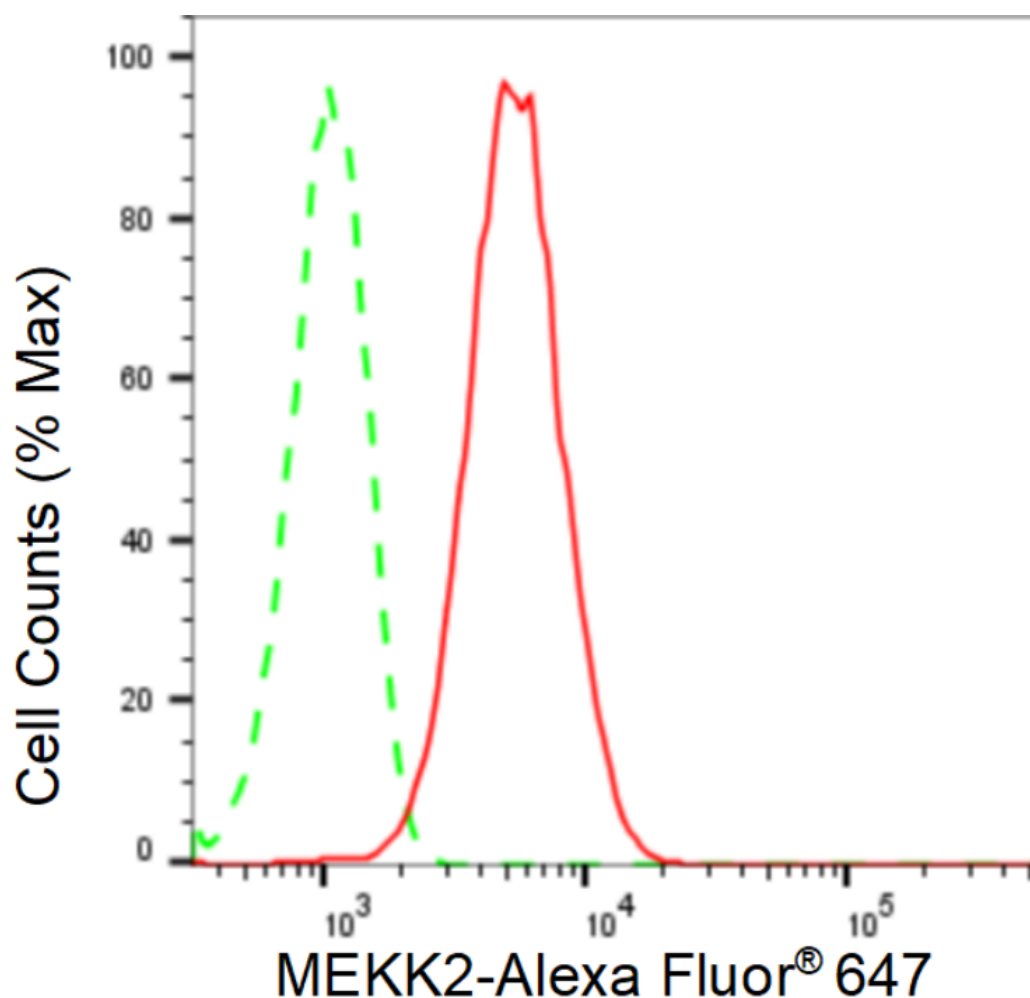
SUPPORT

SUPPORT@GENUINBIOTECH.COM
TEL: +1-540-855-7041

ORDERS

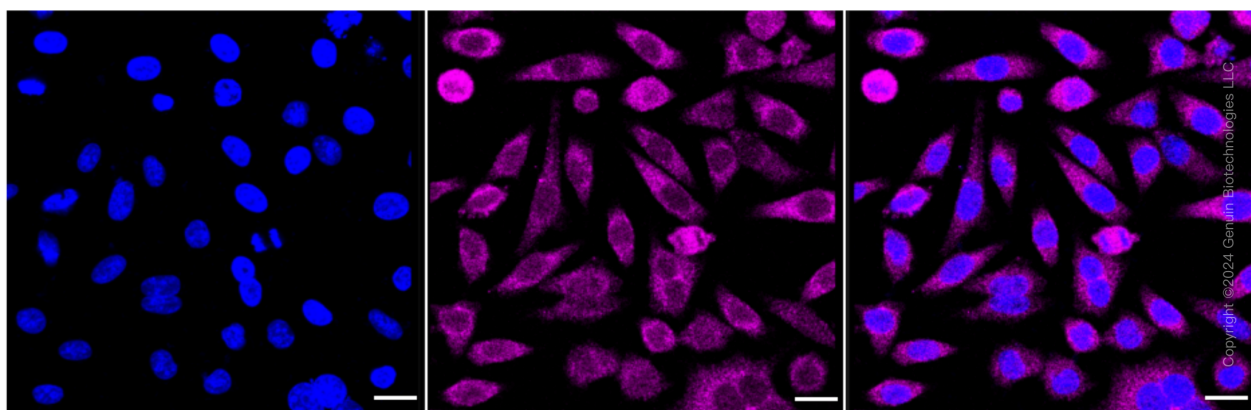
SALES@GENUINBIOTECH.COM
FAX: +1-540-855-7041

WWW.GENUINBIOTECH.COM



Copyright ©2024 Genuin Biotechnologies LLC

Flow cytometric analysis of MEKK2 expression in HepG2 cells using MEKK2 antibody (Cat#62312, 1:2,000). Green, isotype control; red, MEKK2.



Copyright ©2024 Genuin Biotechnologies LLC

Immunocytochemical staining of HeLa cells with anti-MEKK2 antibody (Cat#62312, 1:1,000). Nuclei were stained blue with DAPI; MEKK2 was stained magenta with Alexa Fluor[®] 647. Images were taken using Leica stellaris 5. Protein abundance based on laser Intensity and smart

SUPPORT

SUPPORT@GENUINBIOTECH.COM
TEL: +1-540-855-7041

ORDERS

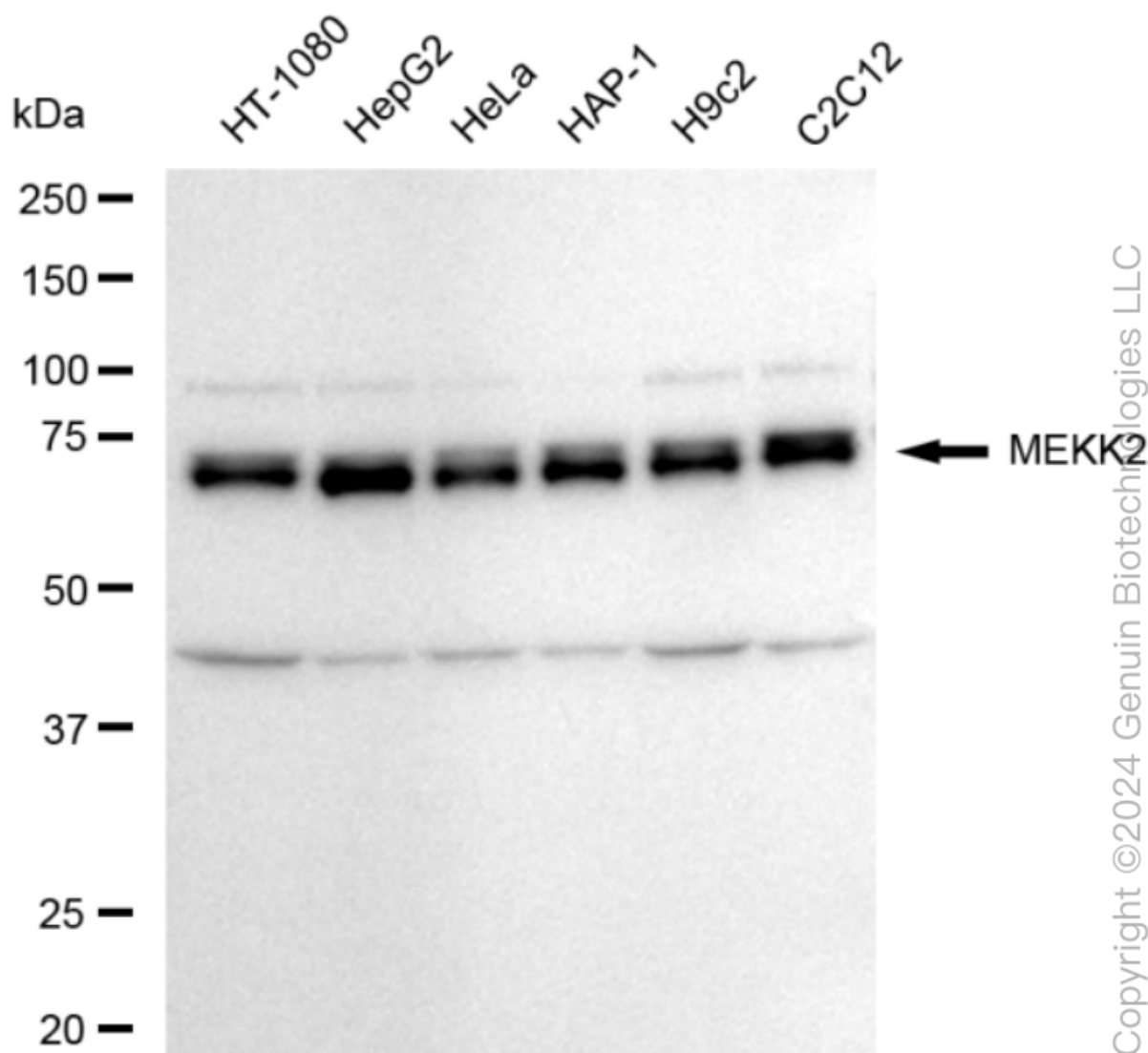
SALES@GENUINBIOTECH.COM
FAX: +1-540-855-7041

WWW.GENUINBIOTECH.COM

KD-Validated Anti-MAP3K2 Recombinant Rabbit Monoclonal Antibody

PAGE 3

gain: Medium. Scale bar: 20 μ m.



Western blotting analysis using anti-MEKK2 antibody (Cat#62312). Total cell lysates (30 μ g) from various cell lines were loaded and separated by SDS-PAGE. The blot was incubated with anti-MEKK2 antibody (Cat#62312, 1:20,000) and HRP-conjugated goat anti-rabbit secondary antibody (Cat#201, 1:20,000) respectively. Image was developed using FeQ™ ECL Substrate Kit (Cat#226).

SUPPORT

SUPPORT@GENUINBIOTECH.COM
TEL: +1-540-855-7041

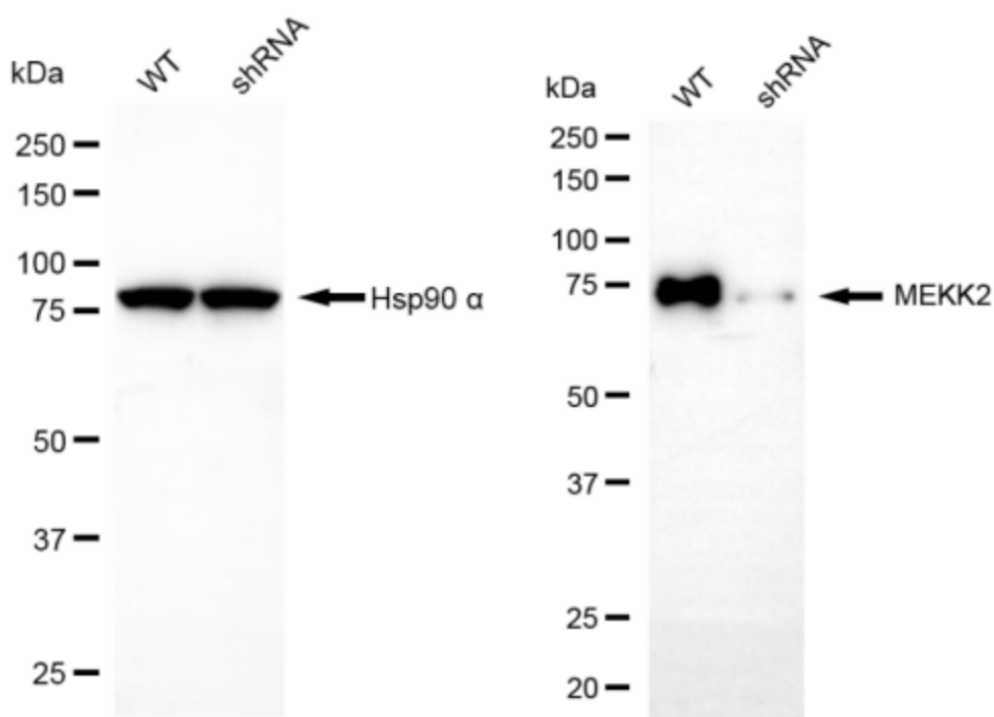
ORDERS

SALES@GENUINBIOTECH.COM
FAX: +1-540-855-7041

WWW.GENUINBIOTECH.COM

KD-Validated Anti-MAP3K2 Recombinant Rabbit Monoclonal Antibody

PAGE 4



Copyright ©2024 Genuin Biotechnologies LLC

Western blotting analysis using anti-MEKK2 antibody (Cat#62312). MEKK2 expression in wild type (WT) and MEKK2 shRNA knockdown (KD) HT-1080 cells with 20 µg of total cell lysates. Hsp90 α serves as a loading control. The blot was incubated with anti-MEKK2 antibody (Cat#62312, 1:20,000) and HRP-conjugated goat anti-rabbit secondary antibody (Cat#201, 1:20,000) respectively. Image was developed using NaQ™ ECL Substrate Kit (Cat#716).

SUPPORT

SUPPORT@GENUINBIOTECH.COM
TEL: +1-540-855-7041

ORDERS

SALES@GENUINBIOTECH.COM
FAX: +1-540-855-7041

WWW.GENUINBIOTECH.COM