

KD-Validated Anti-DGCR8 Recombinant Rabbit Monoclonal Antibody



Catalog #: 62316

Aliases

DGCR8; DGCR8 Microprocessor Complex Subunit; DGCRK6; DiGeorge Syndrome Critical Region Gene 8; Microprocessor Complex Subunit DGCR8; DiGeorge Syndrome Critical Region 8; C22orf12; Pasha; Gy1; DGCR8, Microprocessor Complex Subunit; Chromosome 22 Open Reading Frame 12; C22ORF12; PASHA; GY1

Background

Gene Name: DGCR8

NCBI Gene Entry: [54487](#)

UniProt Entry: [Q8WYQ5](#)

Application Information

Molecular Weight: Predicted, 86 kDa, observed, 110 kDa

Clonality: Rabbit monoclonal antibody

Clone ID: 23GB1615

Species Reactivity: Human, mouse, rat

Applications Tested: Western blotting (WB), flow cytometry (FCM), immunocytochemistry (IC)

Immunogen

A synthesized peptide derived from human DGCR8

Isotype

Rabbit IgG

Storage Buffer

Supplied in PBS (pH 7.4) containing 50% glycerol, and 0.02% sodium azide.

Storage

Store at -20 °C for one year.

Recommended Dilutions

Western Blotting (WB): 1:1,000-1:5,000

Flow Cytometry (FCM): 1:2,000

Immunocytochemistry (IC): 1:100-1:1,000

SUPPORT

SUPPORT@GENUINBIOTECH.COM
TEL: +1-540-855-7041

ORDERS

SALES@GENUINBIOTECH.COM
FAX: +1-540-855-7041

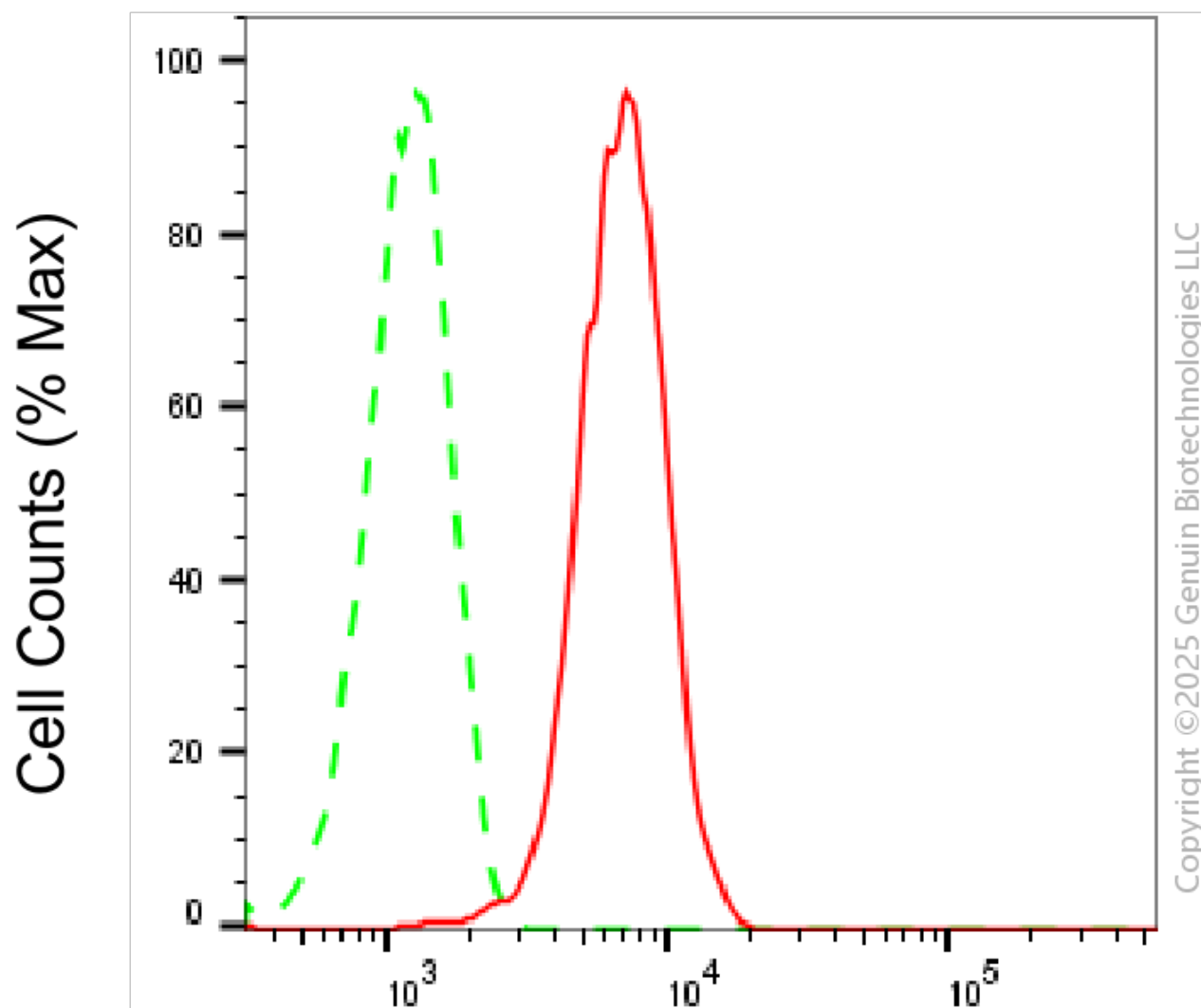
WWW.GENUINBIOTECH.COM

KD-Validated Anti-DGCR8 Recombinant Rabbit Monoclonal Antibody

PAGE 2

Note: This product is for research use only.

Validation Data



DGCR8-Alexa Fluor® 647

Flow cytometric analysis of DGCR8 expression in HepG2 cells using anti-DGCR8 antibody (Cat #62316, 1:2,000). Green, isotype control; red, DGCR8.

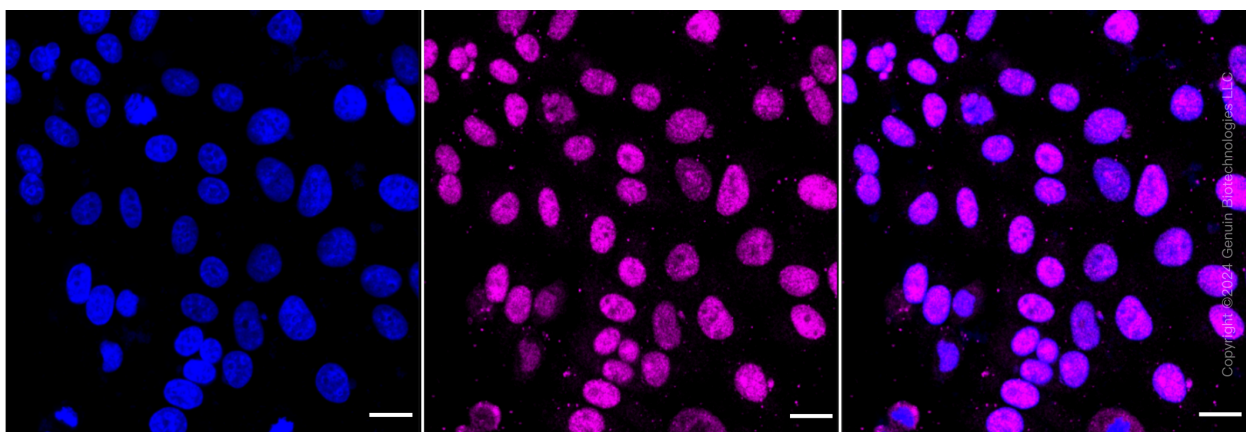
SUPPORT

SUPPORT@GENUINBIOTECH.COM
TEL: +1-540-855-7041

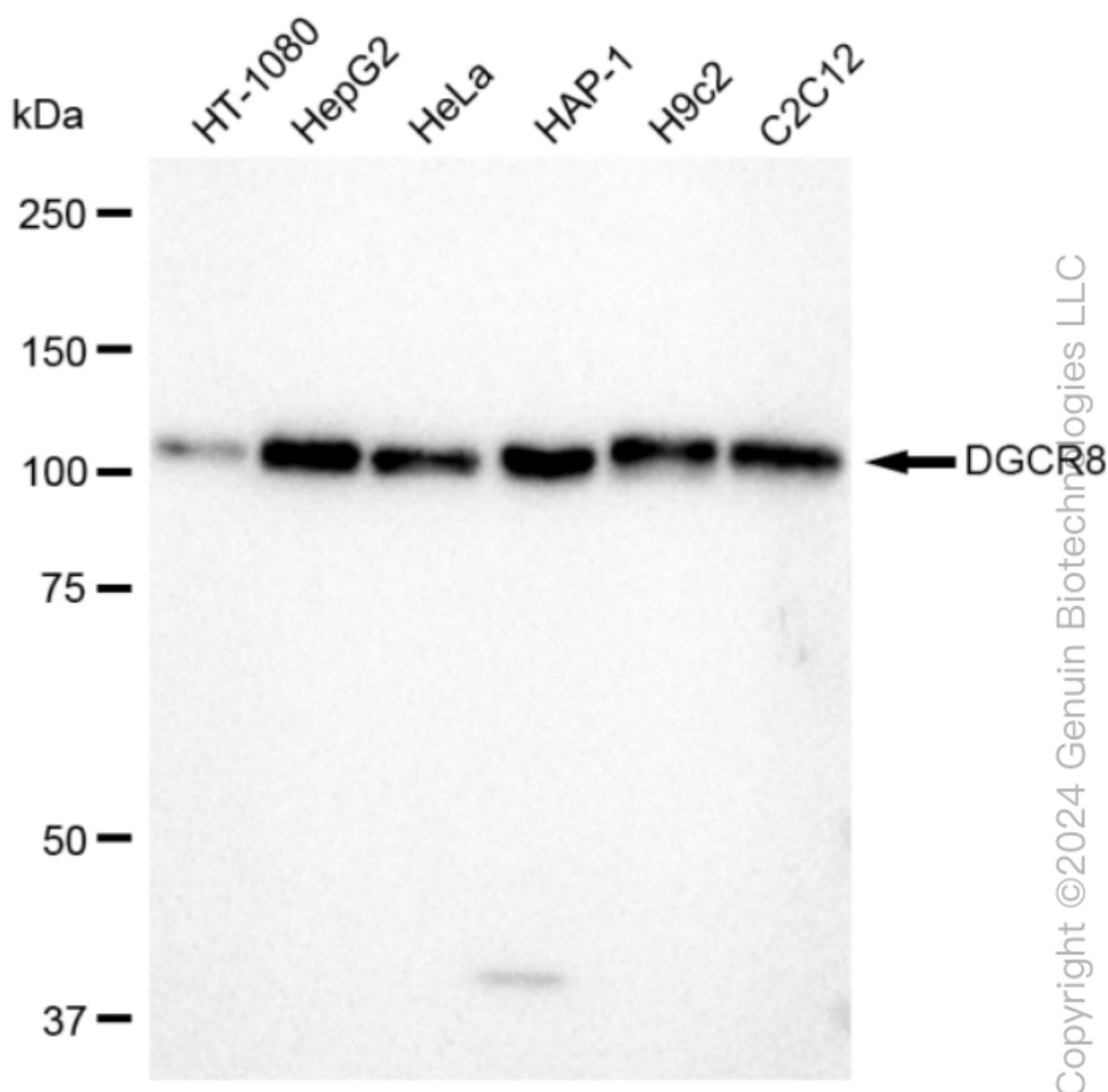
ORDERS

SALES@GENUINBIOTECH.COM
FAX: +1-540-855-7041

WWW.GENUINBIOTECH.COM



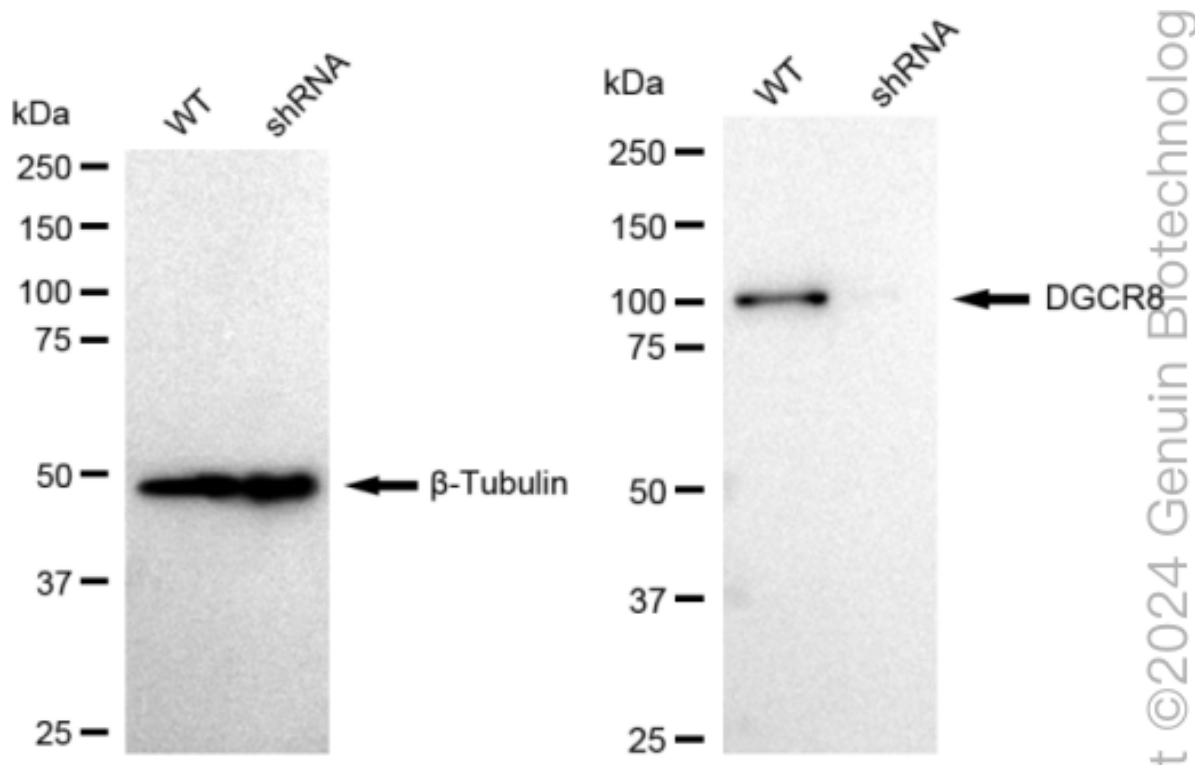
Immunocytochemical staining of HepG2 cells with anti-DGCR8 antibody (Cat#62316, 1:1,000). Nuclei were stained blue with DAPI; DGCR8 was stained magenta with Alexa Fluor® 647. Images were taken using Leica stellaris 5. Protein abundance based on laser Intensity and smart gain: Medium. Scale bar: 20 μ m.



Western blotting analysis using anti-DGCR8 antibody (Cat#62316). Total cell lysates (30 µg) from various cell lines were loaded and separated by SDS-PAGE. The blot was incubated with anti-DGCR8 antibody (Cat#62316, 1:5,000) and HRP-conjugated goat anti-rabbit secondary antibody (Cat#201, 1:20,000) respectively. Image was developed using FeQ™ ECL Substrate Kit (Cat#226).

KD-Validated Anti-DGCR8 Recombinant Rabbit Monoclonal Antibody

PAGE 5



Western blotting analysis using anti-DGCR8 antibody (Cat#62316). DGCR8 expression in wild type (WT) and DGCR8 shRNA knockdown (KD) HeLa cells with 30 μ g of total cell lysates. β -Tubulin serves as a loading control. The blot was incubated with anti-DGCR8 antibody (Cat#62316, 1:5,000) and HRP-conjugated goat anti-rabbit secondary antibody (Cat#201, 1:20,000) respectively. Image was developed using FeQTM ECL Substrate Kit (Cat#226).

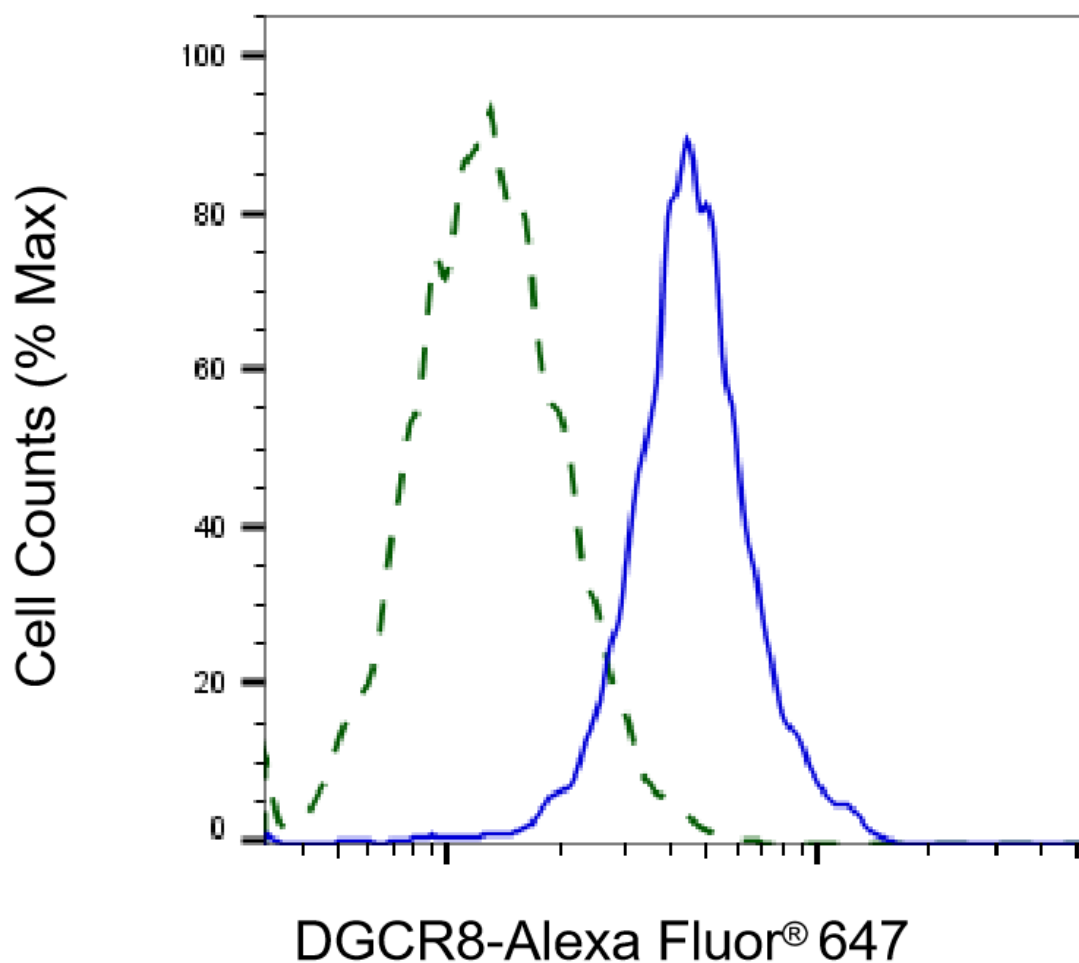
SUPPORT

SUPPORT@GENUINBIOTECH.COM
TEL: +1-540-855-7041

ORDERS

SALES@GENUINBIOTECH.COM
FAX: +1-540-855-7041

WWW.GENUINBIOTECH.COM



Copyright ©2025 Genuin Biotechnologies LLC

Validation of DGCR8 knockdown using flow cytometry. Wild-type(WT, Blue) and knockdown(KD, Green) HeLa cells were stained with anti-DGCR8 antibody (Cat#62316, 1:2,000) and analyzed using BD flow cytometer.