

KD-Validated Anti-Phospho-MEK1 (S298) Recombinant Rabbit Monoclonal Antibody



Catalog #: 62318

Aliases

Mitogen-Activated Protein Kinase Kinase 1; MEK1; Dual Specificity Mitogen-Activated Protein Kinase Kinase 1; MAPK/ERK Kinase 1; MAPKK1; PRKMK1; MKK1; ERK Activator Kinase 1; MAP Kinase Kinase 1; EC 2.7.12.2; MAPKK 1; MEK 1; Protein Kinase, Mitogen-Activated, Kinase 1 (MAP Kinase Kinase 1); CFC3; MEL

Background

Gene Name: MAP2K1

NCBI Gene Entry: [5604](#)

UniProt Entry: [Q02750](#)

Application Information

Molecular Weight: Predicted, 43 kDa, observed, 45 kDa

Clonality: Rabbit monoclonal antibody

Clone ID: 24GB285

Species Reactivity: Human, mouse, rat

Applications Tested: Western blotting (WB), flow cytometry (FCM), immunocytochemistry (IC)

Immunogen

A synthesized peptide derived from human MEK1

Isotype

Rabbit IgG

Storage Buffer

Supplied in PBS (pH 7.4) containing 50% glycerol, and 0.02% sodium azide.

Storage

Store at -20 °C for one year.

Recommended Dilutions

Western Blotting (WB): 1:1,000-1:5,000

Flow Cytometry (FCM): 1:2,000

Immunocytochemistry (IC): 1:100-1:1,000

SUPPORT

SUPPORT@GENUINBIOTECH.COM
TEL: +1-540-855-7041

ORDERS

SALES@GENUINBIOTECH.COM
FAX: +1-540-855-7041

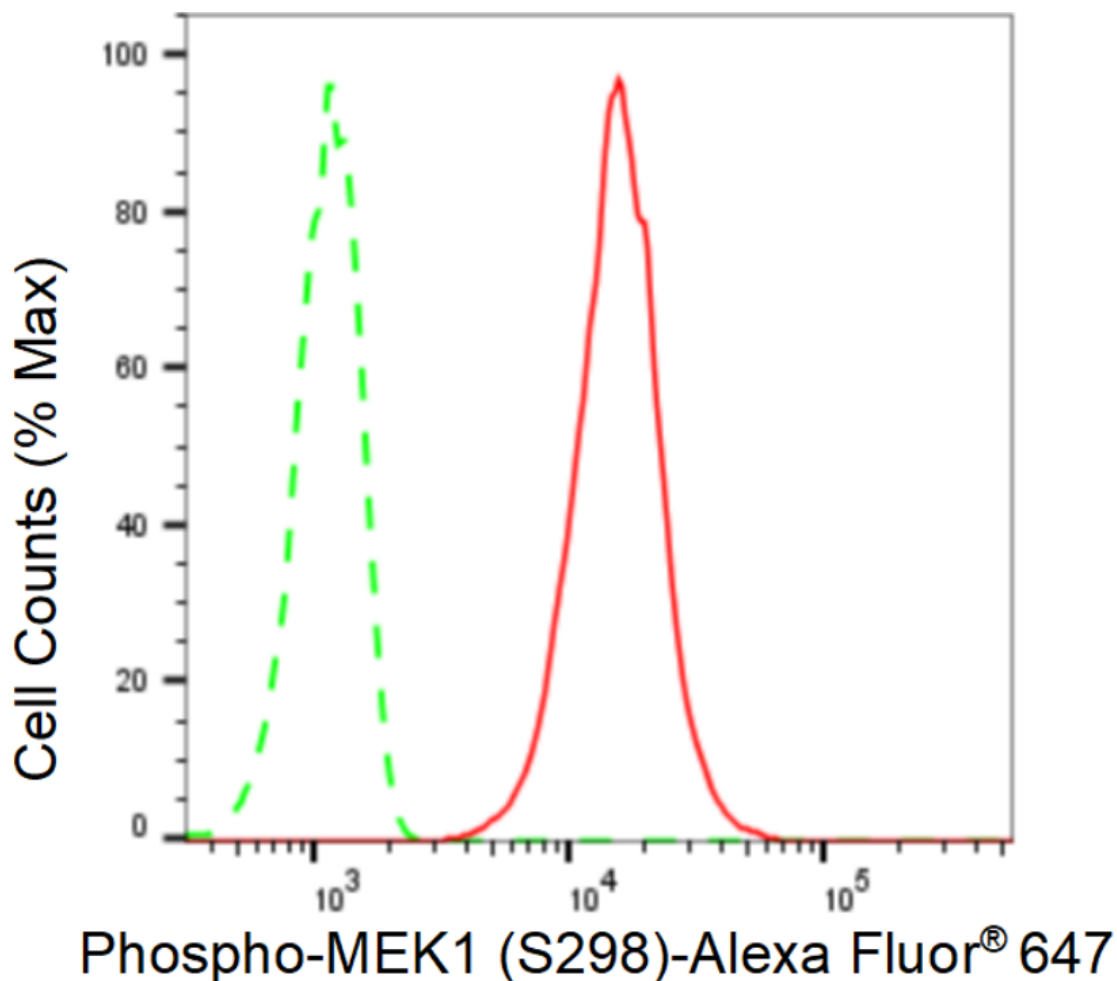
WWW.GENUINBIOTECH.COM

KD-Validated Anti-Phospho-MEK1 (S298) Recombinant Rabbit Monoclonal Antibody

PAGE 2

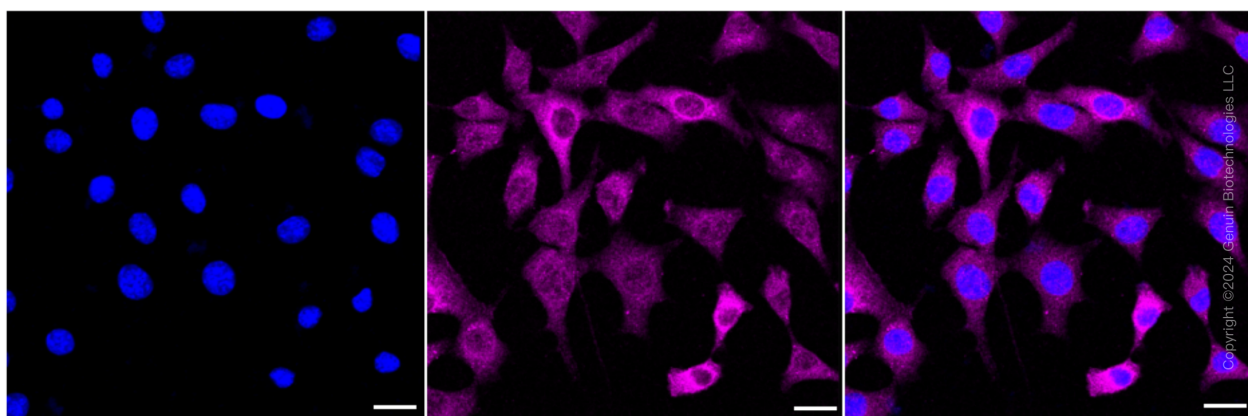
Note: This product is for research use only.

Validation Data



Copyright ©2024 Genuin Biotechnologies LLC

Flow cytometric analysis of Phospho-MEK1 (S298) expression in C2C12 cells using Phospho-MEK1 (S298) antibody (Cat#62318, 1:2,000). Green, isotype control; red, Phospho-MEK1 (S298).



SUPPORT

SUPPORT@GENUINBIOTECH.COM
TEL: +1-540-855-7041

ORDERS

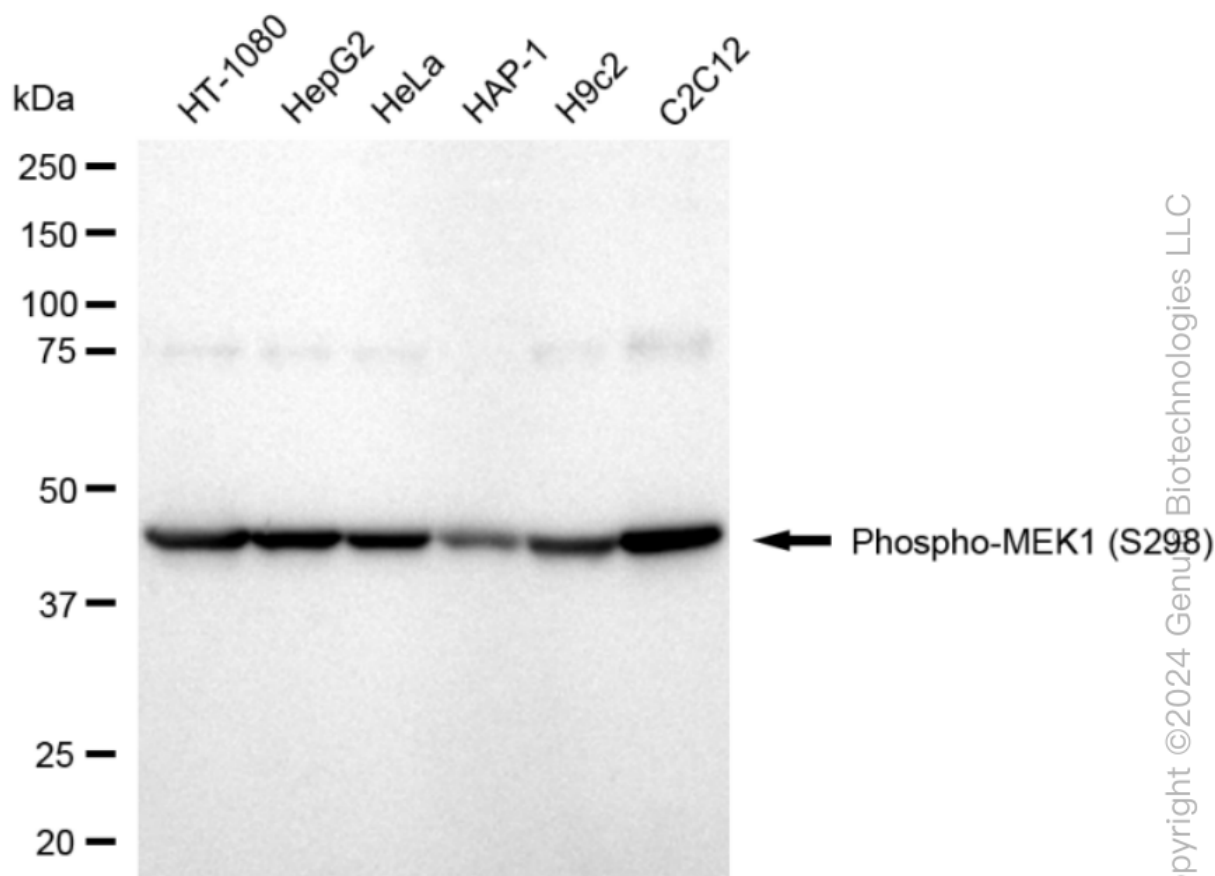
SALES@GENUINBIOTECH.COM
FAX: +1-540-855-7041

WWW.GENUINBIOTECH.COM

KD-Validated Anti-Phospho-MEK1 (S298) Recombinant Rabbit Monoclonal Antibody

PAGE 3

Immunocytochemical staining of C2C12 cells with anti-Phospho-MEK1 (S298) antibody (Cat#62318, 1:1,000). Nuclei were stained blue with DAPI; Phospho-MEK1 (S298) was stained magenta with Alexa Fluor® 647. Images were taken using Leica stellaris 5. Protein abundance based on laser Intensity and smart gain: Medium. Scale bar: 20 μ m.



Western blotting analysis using anti-Phospho-MEK1 (S298) antibody (Cat#62318). Total cell lysates (30 μ g) from various cell lines were loaded and separated by SDS-PAGE. The blot was incubated with anti-Phospho-MEK1 (S298) antibody (Cat#62318, 1:5,000) and HRP-conjugated goat anti-rabbit secondary antibody (Cat#201, 1:20,000) respectively. Image was developed using FeQ™ ECL Substrate Kit (Cat#226).

SUPPORT

SUPPORT@GENUINBIOTECH.COM
TEL: +1-540-855-7041

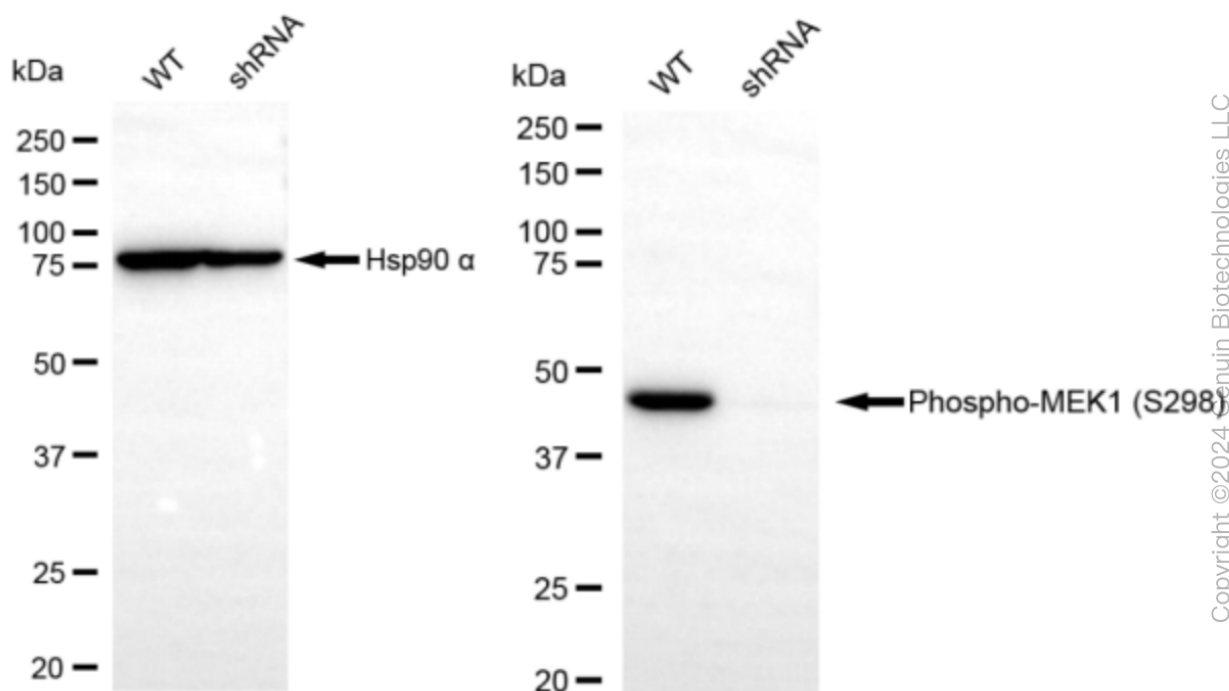
ORDERS

SALES@GENUINBIOTECH.COM
FAX: +1-540-855-7041

WWW.GENUINBIOTECH.COM

KD-Validated Anti-Phospho-MEK1 (S298) Recombinant Rabbit Monoclonal Antibody

PAGE 4



Western blotting analysis using anti-Phospho-MEK1 (S298) antibody (Cat#62318). Phospho-MEK1 (S298) expression in wild type (WT) and Phospho-MEK1 (S298) shRNA knockdown (KD) HeLa cells with 20 µg of total cell lysates. Hsp90 α serves as a loading control. The blot was incubated with anti-Phospho-MEK1 (S298) antibody (Cat#62318, 1:5,000) and HRP-conjugated goat anti-rabbit secondary antibody (Cat#201, 1:20,000) respectively. Image was developed using NaQ™ ECL Substrate Kit (Cat#716).

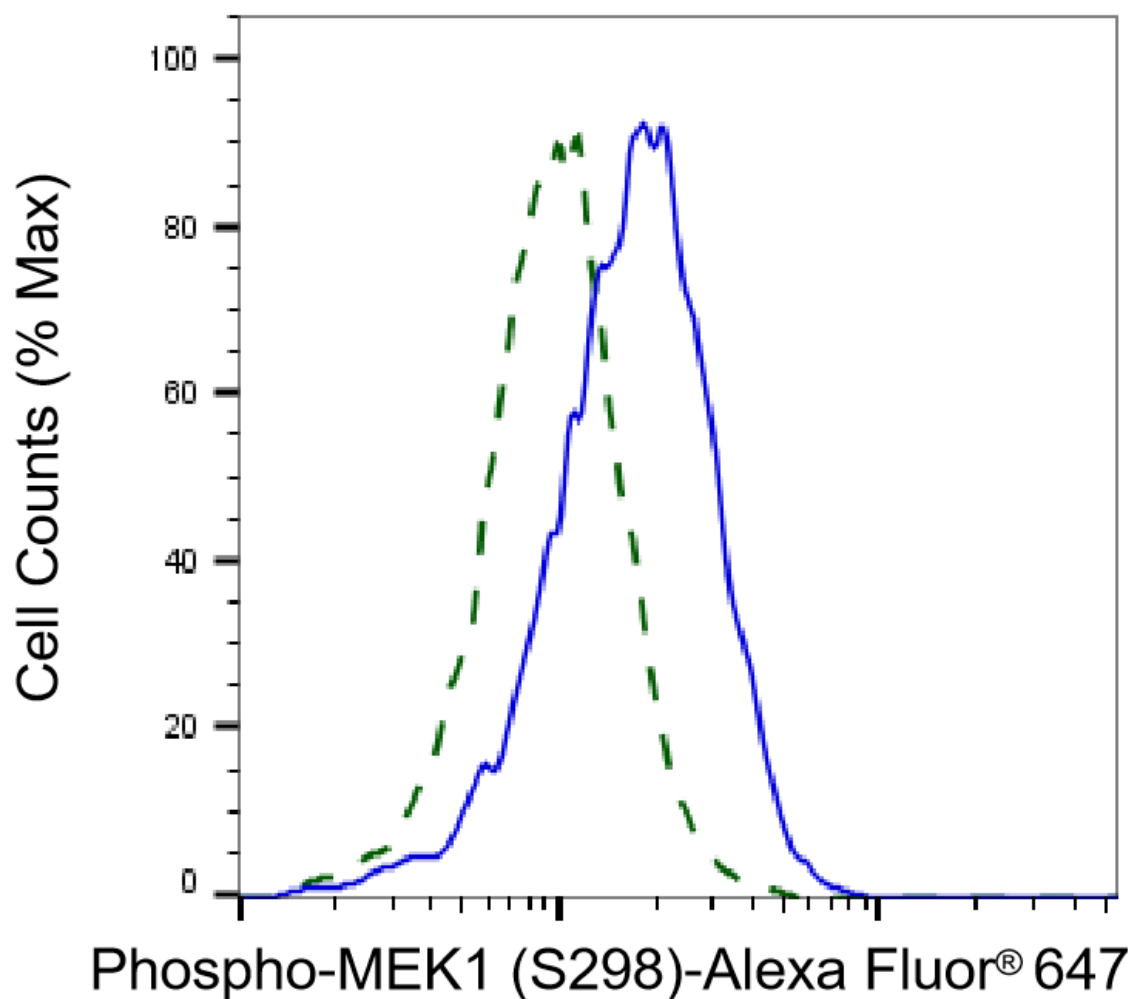
SUPPORT

SUPPORT@GENUINBIOTECH.COM
TEL: +1-540-855-7041

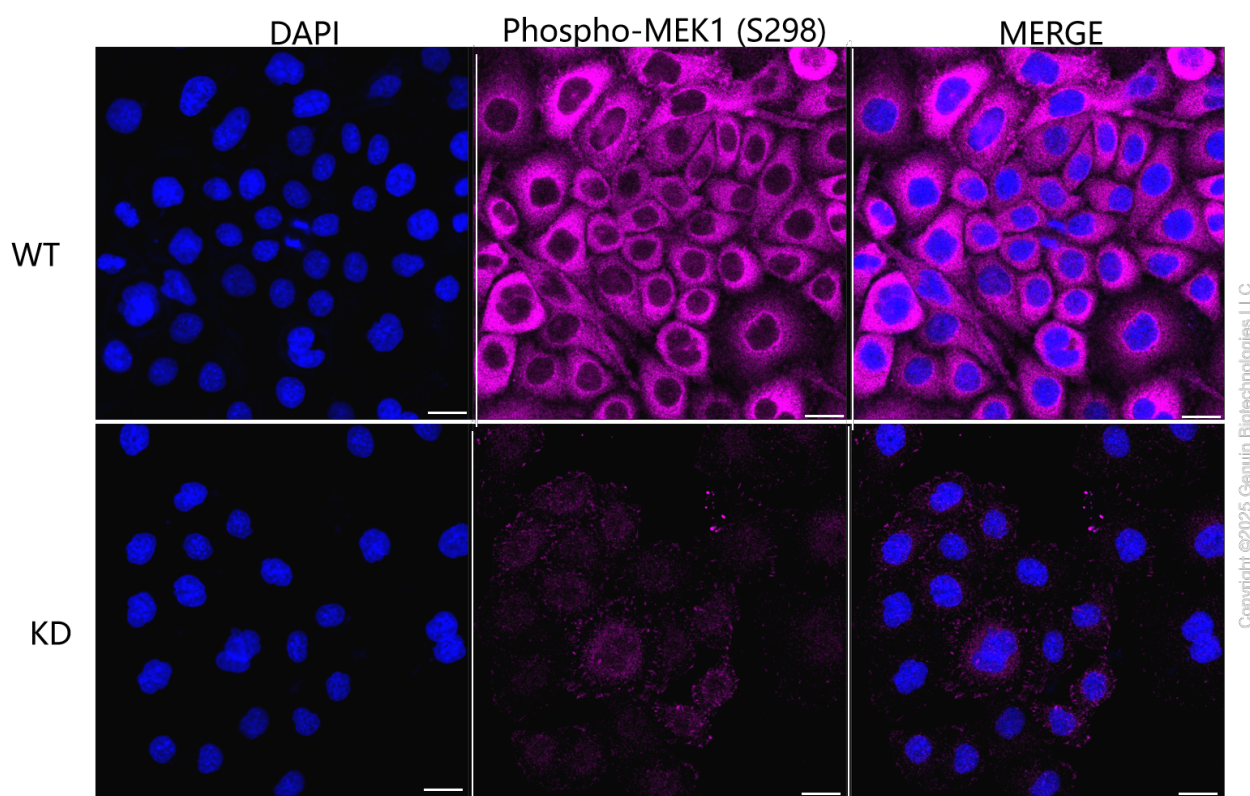
ORDERS

SALES@GENUINBIOTECH.COM
FAX: +1-540-855-7041

WWW.GENUINBIOTECH.COM



Validation of MEK1 knockdown using flow cytometry. Wild-type(WT, Blue) and knockdown(KD, Green) HeLa cells were stained with anti-Phospho-MEK1 (S298) antibody (Cat#62318, 1:2,000) and analyzed using BD flow cytometer.



Immunocytochemical staining of HeLa cells using anti-Phospho-MEK1 (S298) antibody (Cat#62318, 1:1,000), Top panel: wild-type (WT); Bottom panel: Phospho-MEK1 (S298) shRNA knockdown (KD). Nuclei were stained blue with DAPI; Phospho-MEK1 (S298) was stained magenta with Alexa Fluor® 647. Scale bar, 20 μ m. Permeabilization: Triton.