

KD-Validated Anti-Phospho-mTOR (S2448) Recombinant Rabbit Monoclonal Antibody



Catalog #: 62330

Aliases

Mechanistic Target Of Rapamycin Kinase; RAFT1; RAPT1; Rapamycin And FKBP12 Target 1; Mammalian Target Of Rapamycin; FRAP1; FRAP2; FRAP; FK506-Binding Protein 12-Rapamycin Complex-Associated Protein 1; Mechanistic Target Of Rapamycin (Serine/Threonine Kinase); FK506 Binding Protein 12-Rapamycin Associated Protein 2; FKBP12-Rapamycin Complex-Associated Protein 1; Serine/Threonine-Protein Kinase MTOR; Rapamycin Associated Protein FRAP2; FKBP-Rapamycin Associated Protein; Mechanistic Target Of Rapamycin; Rapamycin Target Protein 1; FLJ44809; DJ576K7.1 (FK506 Binding Protein 12-Rapamycin Associated Protein 1); FK506 Binding Protein 12-Rapamycin Associated Protein 1; FKBP12-Rapamycin Complex-Associated Protein; Rapamycin Target Protein; EC 2.7.11.1; MTOR; SKS

Background

Gene Name: MTOR

NCBI Gene Entry: [2475](#)

UniProt Entry: [P42345](#)

Application Information

Molecular Weight: Predicted, 289 kDa, observed, 289 kDa

Clonality: Rabbit monoclonal antibody

Clone ID: 24GB330

Species Reactivity: Human, mouse, rat

Applications Tested: Western blotting (WB), flow cytometry (FCM), immunocytochemistry (IC)

Immunogen

A synthesized peptide derived from human Phospho-mTOR (S2448)

Isotype

Rabbit IgG

Storage Buffer

Supplied in PBS (pH 7.4) containing 50% glycerol, and 0.02% sodium azide.

Storage

Store at -20 °C for one year.

Recommended Dilutions

SUPPORT

SUPPORT@GENUINBIOTECH.COM
TEL: +1-540-855-7041

ORDERS

SALES@GENUINBIOTECH.COM
FAX: +1-540-855-7041

WWW.GENUINBIOTECH.COM

KD-Validated Anti-Phospho-mTOR (S2448) Recombinant Rabbit Monoclonal Antibody

PAGE 2

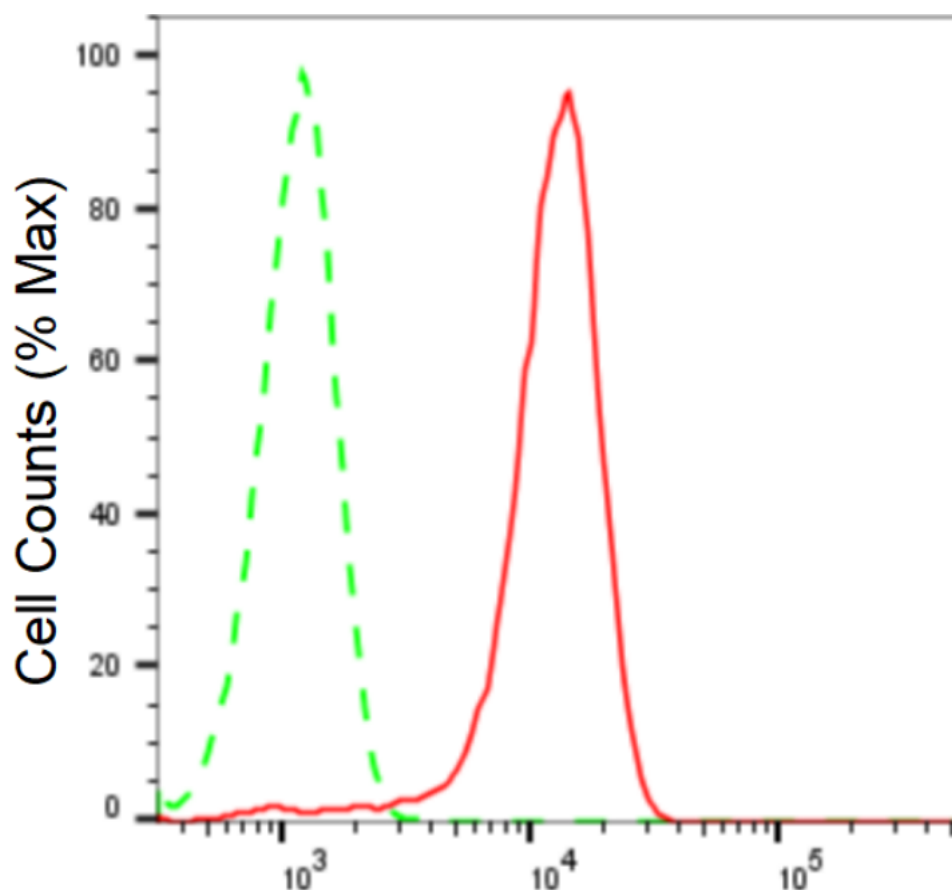
Western Blotting (WB): 1:1,000-1:5,000

Flow Cytometry (FCM): 1:2,000

Immunocytochemistry (IC): 1:100-1:1,000

Note: This product is for research use only.

Validation Data



Copyright ©2024 Genuin Biotechnologies LLC

Phospho-mTOR (S2448)-Alexa Fluor® 647

Flow cytometric analysis of Phospho-mTOR (S2448) expression in HeLa cells using Phospho-mTOR (S2448) antibody (Cat#62330, 1:2,000). Green, isotype control; red, Phospho-mTOR (S2448).

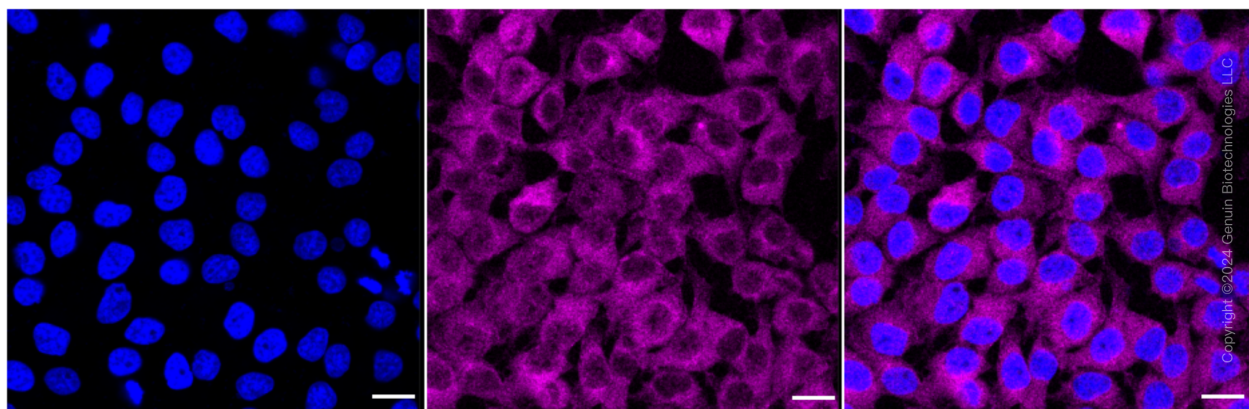
SUPPORT

SUPPORT@GENUINBIOTECH.COM
TEL: +1-540-855-7041

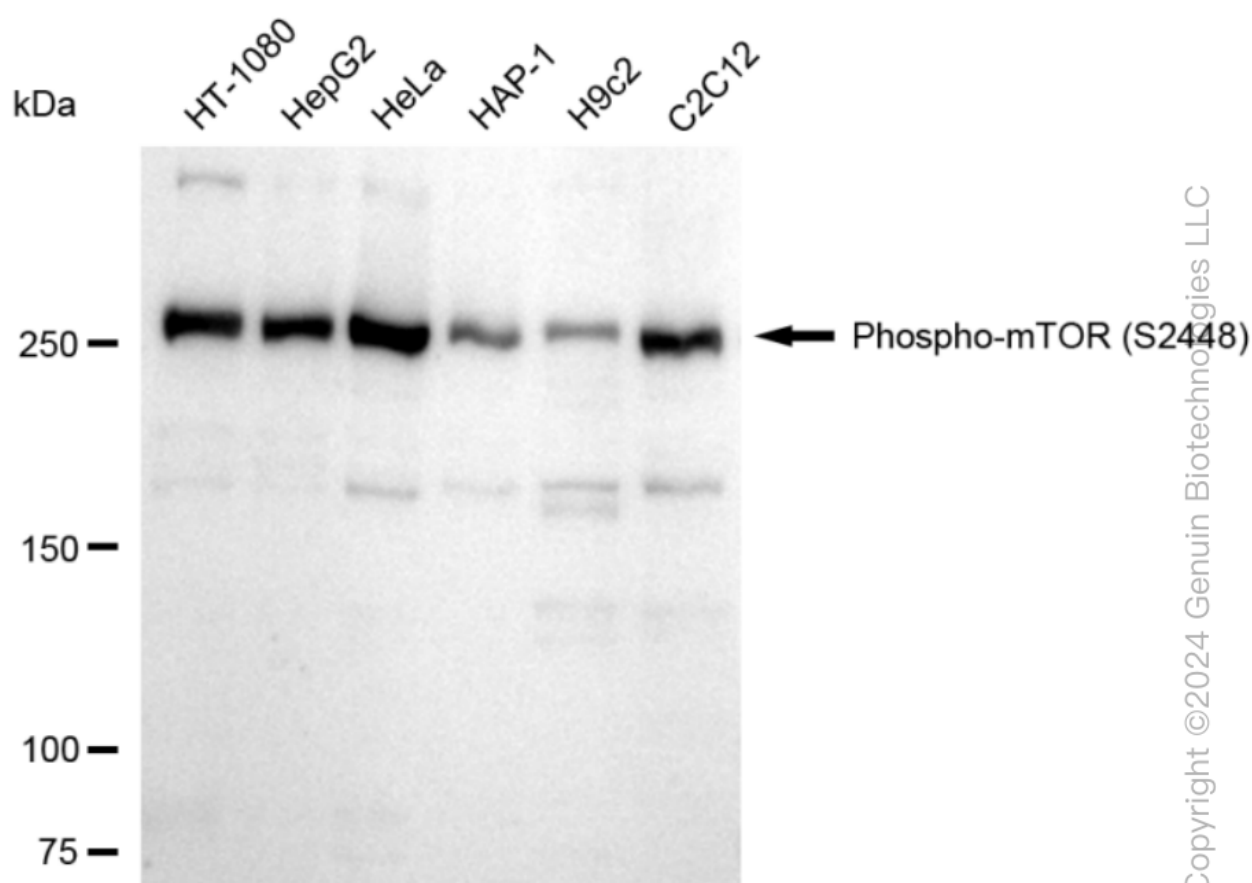
ORDERS

SALES@GENUINBIOTECH.COM
FAX: +1-540-855-7041

WWW.GENUINBIOTECH.COM



Immunocytochemical staining of HeLa cells with anti-Phospho-mTOR (S2448) antibody (Cat#62330, 1:1,000). Nuclei were stained blue with DAPI; Phospho-mTOR (S2448) was stained magenta with Alexa Fluor® 647. Images were taken using Leica stellaris 5. Protein abundance based on laser Intensity and smart gain: Medium. Scale bar: 20 μ m.

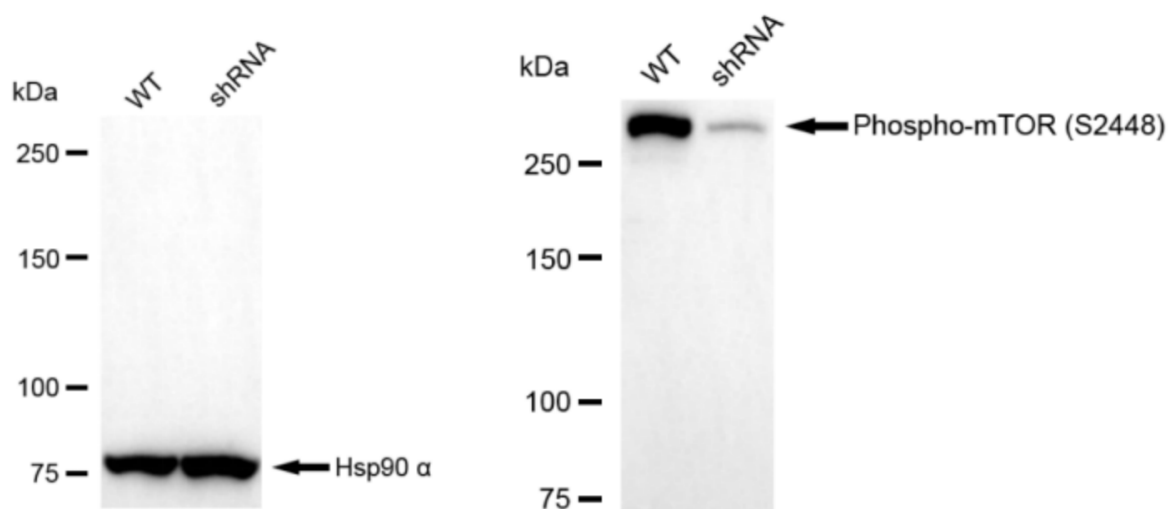


Western blotting analysis using anti-Phospho-mTOR (S2448) antibody (Cat#62330). Total cell lysates (30 μ g) from various cell lines were loaded and separated by SDS-PAGE. The blot was incubated with anti-Phospho-mTOR (S2448) antibody (Cat#62330, 1:5,000) and HRP-conjugated

KD-Validated Anti-Phospho-mTOR (S2448) Recombinant Rabbit Monoclonal Antibody

PAGE 4

goat anti-rabbit secondary antibody (Cat#201, 1:20,000) respectively. Image was developed using FeQ™ ECL Substrate Kit (Cat#226).



Western blotting analysis using anti-Phospho-mTOR (S2448) antibody (Cat#62330). Phospho-mTOR (S2448) expression in wild type (WT) and Phospho-mTOR (S2448) shRNA knockdown (KD) HeLa cells with 20 µg of total cell lysates. Hsp90 α serves as a loading control. The blot was incubated with anti-Phospho-mTOR (S2448) antibody (Cat#62330, 1:5,000) and HRP-conjugated goat anti-rabbit secondary antibody (Cat#201, 1:20,000) respectively. Image was developed using NaQ™ ECL Substrate Kit (Cat#716).

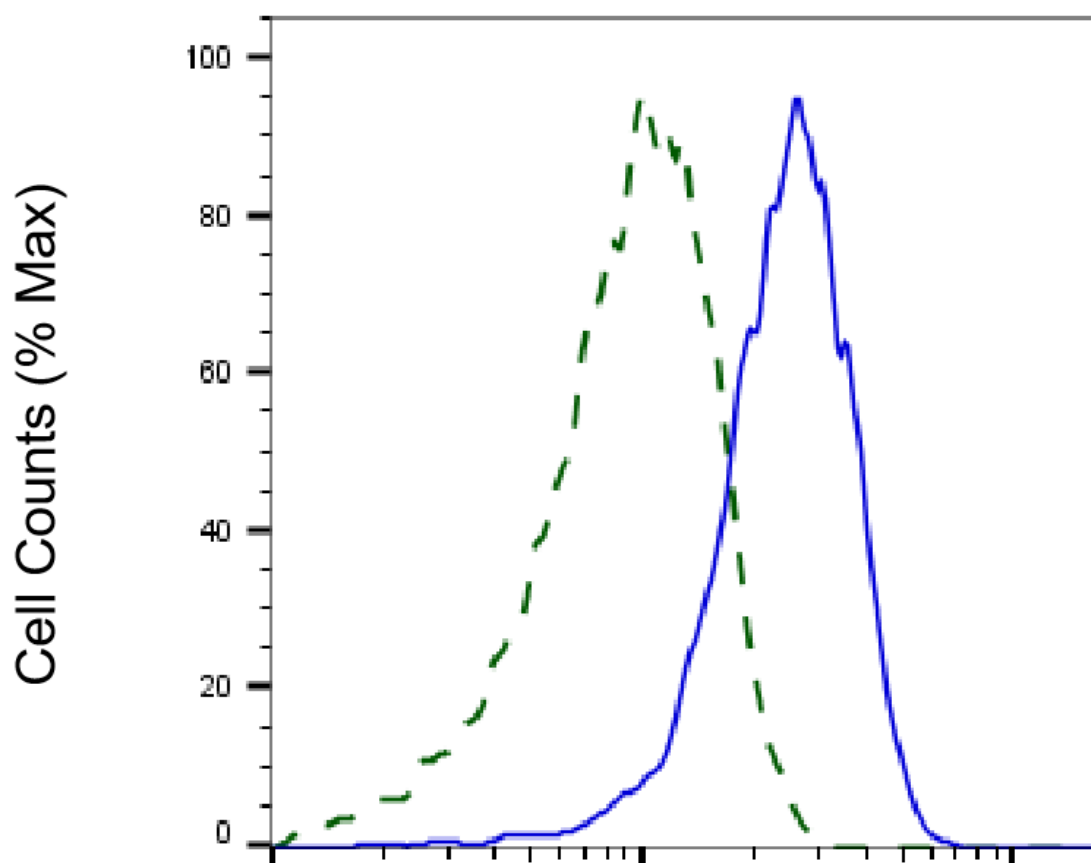
SUPPORT

SUPPORT@GENUINBIOTECH.COM
TEL: +1-540-855-7041

ORDERS

SALES@GENUINBIOTECH.COM
FAX: +1-540-855-7041

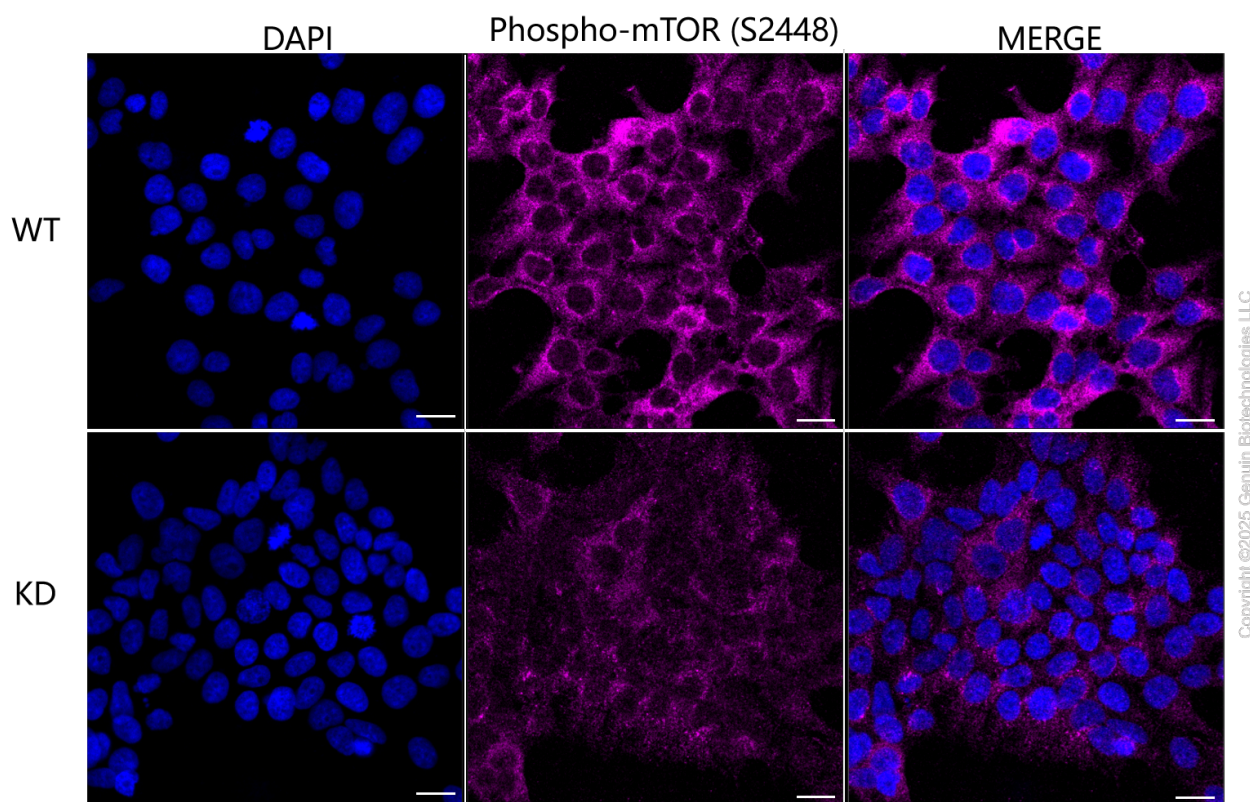
WWW.GENUINBIOTECH.COM



Copyright ©2025 Genuin Biotechnologies LLC

Phospho-mTOR (S2448)-Alexa Fluor® 647

Validation of mTOR knockdown using flow cytometry. Wild-type(WT, Blue) and knockdown(KD, Green) HeLa cells were stained with anti-Phospho-mTOR (S2448) antibody (Cat#62330, 1:2,000) and analyzed using BD flow cytometer.



Immunocytochemical staining of HeLa cells using anti-Phospho-mTOR (S2448) antibody (Cat#62330, 1:1,000), Top panel: wild-type (WT); Bottom panel: Phospho-mTOR (S2448) shRNA knockdown (KD). Nuclei were stained blue with DAPI; Phospho-mTOR (S2448) was stained magenta with Alexa Fluor® 647. Scale bar, 20 μ m.