

KD-Validated Anti-NAD(P)H Quinone Dehydrogenase 1 Recombinant Rabbit



Catalog #: 62335

Aliases

NAD(P)H Quinone Dehydrogenase 1; QR1; DTD; DT-Diaphorase; NMOR1; DHQU; DIA4; Diaphorase (NADH/NADPH) (Cytochrome B-5 Reductase); NAD(P)H Dehydrogenase [Quinone] 1; NAD(P)H Dehydrogenase, Quinone 1; NAD(P)H:Quinone Oxidoreductase 1; NAD(P)H-Quinone Oxidoreductase; Phylloquinone Reductase; Menadione Reductase; Quinone Reductase 1; Azoreductase; EC 1.6.5.2; NAD(P)H:Quinone Acceptor Oxidoreductase Type 1; NAD(P)H:Menadione Oxidoreductase 1; NAD(P)H:Quinone Oxidoreductase; Dioxin-Inducible 1; Quinone Reductase; Diaphorase-4; NMORI

Background

Gene Name: NQO1

NCBI Gene Entry: [1728](#)

UniProt Entry: [P15559](#)

Application Information

Molecular Weight: Predicted, 31 kDa, observed, 29 kDa

Clonality: Rabbit monoclonal antibody

Clone ID: 24GB355

Species Reactivity: Human, mouse, rat

Applications Tested: Western blotting (WB), flow cytometry (FCM), immunocytochemistry (IC)

Immunogen

A synthesized peptide derived from human NQO1

Isotype

Rabbit IgG

Storage Buffer

Supplied in PBS (pH 7.4) containing 50% glycerol, and 0.02% sodium azide.

Storage

Store at -20 °C for one year.

Recommended Dilutions

Western Blotting (WB): 1:1,000-1:5,000

Flow Cytometry (FCM): 1:2,000

SUPPORT

SUPPORT@GENUINBIOTECH.COM
TEL: +1-540-855-7041

ORDERS

SALES@GENUINBIOTECH.COM
FAX: +1-540-855-7041

WWW.GENUINBIOTECH.COM

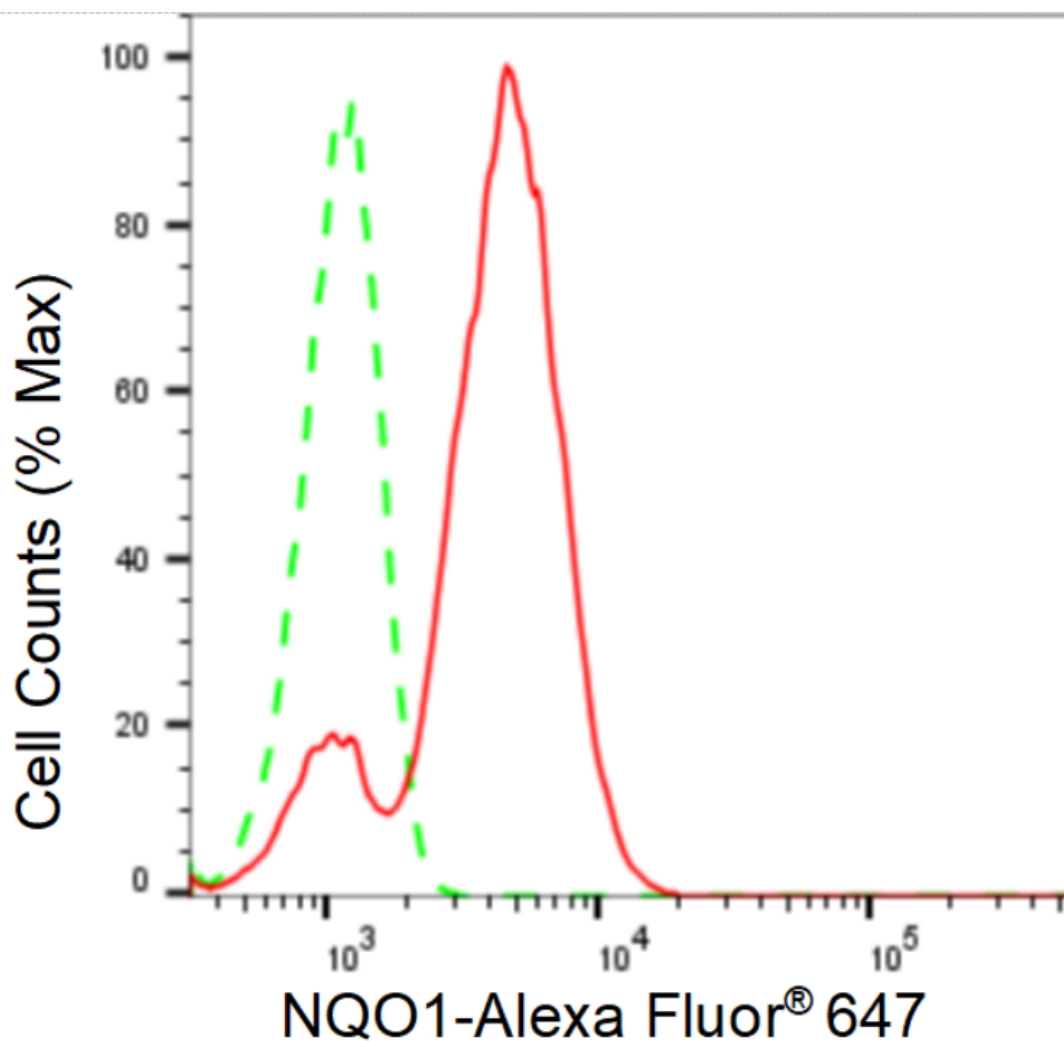
KD-Validated Anti-NAD(P)H Quinone Dehydrogenase 1 Recombinant Rabbit

PAGE 2

Immunocytochemistry (IC): 1:100-1:1,000

Note: This product is for research use only.

Validation Data



Copyright ©2024 Genuin Biotechnologies LLC

Flow cytometric analysis of NQO1 expression in HT-1080 cells using NQO1 antibody (Cat#62335, 1:2,000). Green, isotype control; red, NQO1.

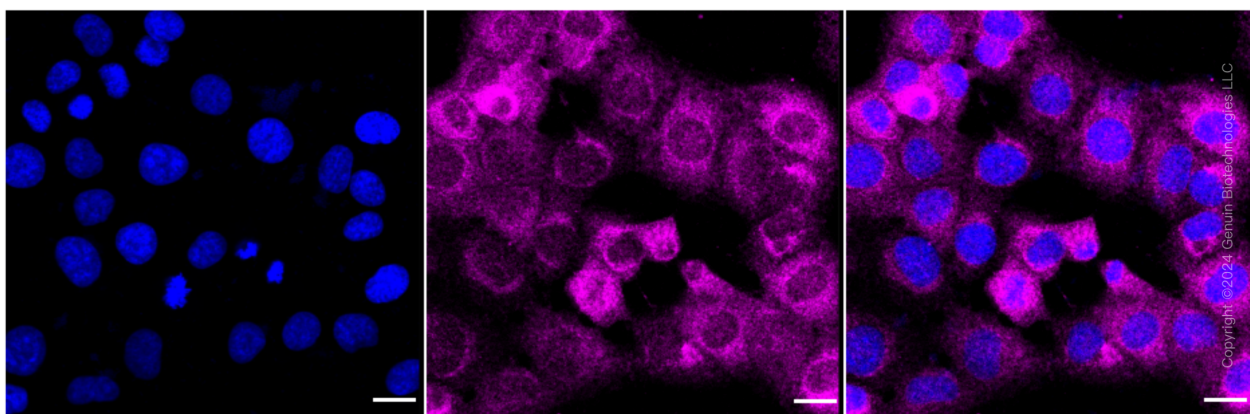
SUPPORT

SUPPORT@GENUINBIOTECH.COM
TEL: +1-540-855-7041

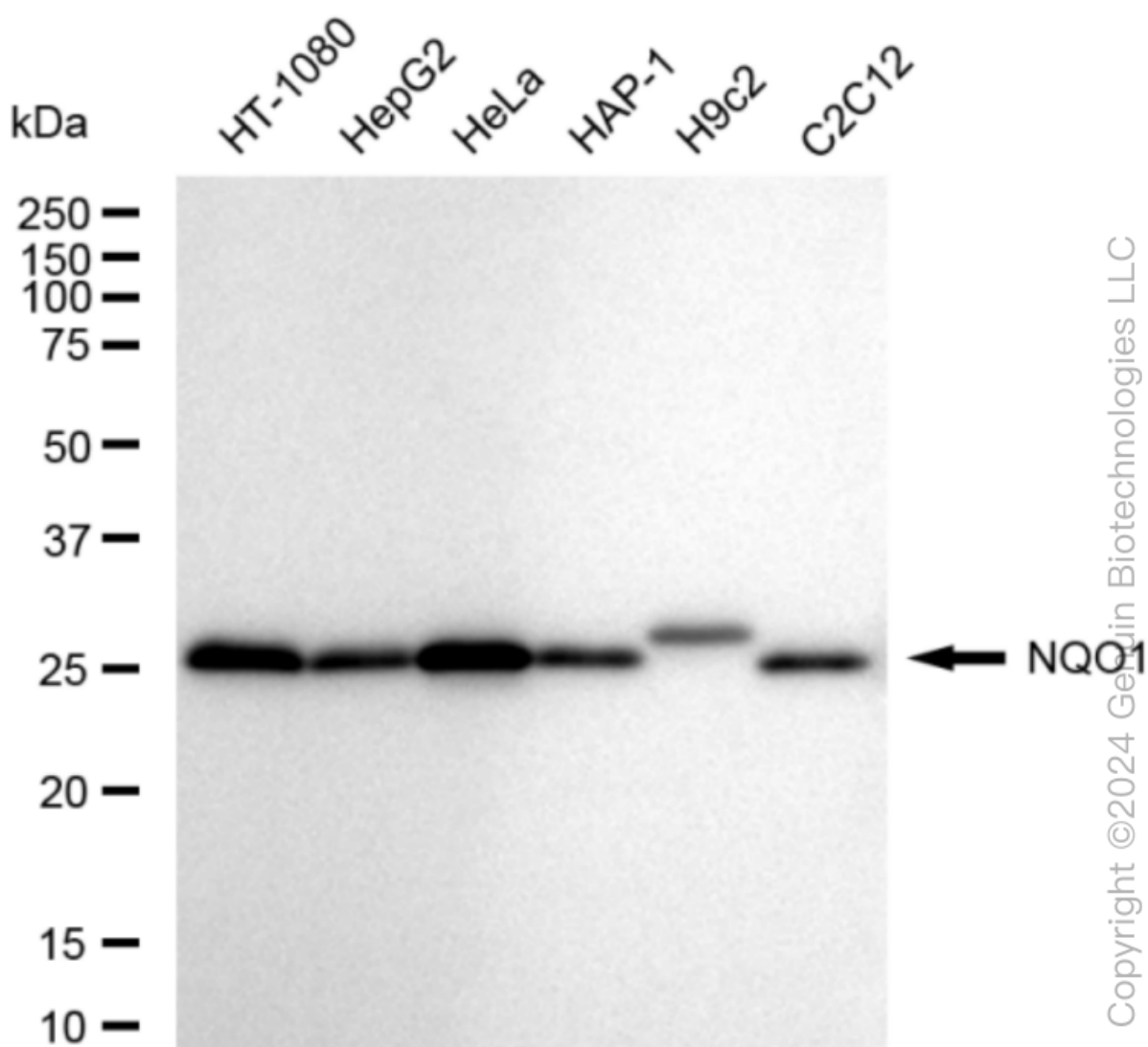
ORDERS

SALES@GENUINBIOTECH.COM
FAX: +1-540-855-7041

WWW.GENUINBIOTECH.COM



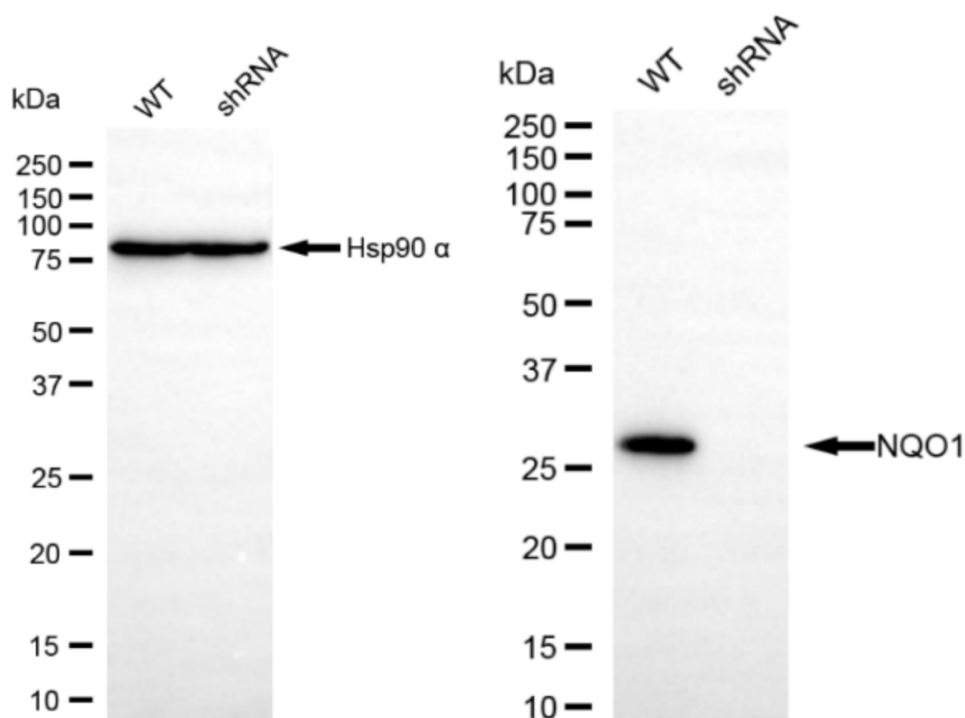
Immunocytochemical staining of HT-1080 cells with anti-NQO1 antibody (Cat#62335, 1:1,000). Nuclei were stained blue with DAPI; NQO1 was stained magenta with Alexa Fluor® 647. Images were taken using Leica stellaris 5. Protein abundance based on laser Intensity and smart gain: Medium. Scale bar: 20 μ m.



KD-Validated Anti-NAD(P)H Quinone Dehydrogenase 1 Recombinant Rabbit

PAGE 4

Western blotting analysis using anti-NQO1 antibody (Cat#62335). Total cell lysates (30 µg) from various cell lines were loaded and separated by SDS-PAGE. The blot was incubated with anti-NQO1 antibody (Cat#62335, 1:5,000) and HRP-conjugated goat anti-rabbit secondary antibody (Cat#201, 1:20,000) respectively. Image was developed using FeQ™ ECL Substrate Kit (Cat#226).



Copyright ©2024 Genuin Biotechnologies LLC

Western blotting analysis using anti-NQO1 antibody (Cat#62335). NQO1 expression in wild type (WT) and NQO1 shRNA knockdown (KD) HeLa cells with 20 µg of total cell lysates. β-Tubulin serves as a loading control. The blot was incubated with anti-NQO1 antibody (Cat#62335, 1:5,000) and HRP-conjugated goat anti-rabbit secondary antibody (Cat#201, 1:20,000) respectively. Image was developed using NaQ™ ECL Substrate Kit (Cat#716).

SUPPORT

SUPPORT@GENUINBIOTECH.COM
TEL: +1-540-855-7041

ORDERS

SALES@GENUINBIOTECH.COM
FAX: +1-540-855-7041

WWW.GENUINBIOTECH.COM