

KD-Validated Anti-Poly(A) Binding Protein Nuclear 1 Recombinant Rabbit Monoclonal



Catalog #: 62337

Aliases

Poly(A) Binding Protein Nuclear 1; PAB2 ; PABP2; Polyadenylate-Binding Protein 2; PABP-2; PABII; OPMD; Polyadenylate-Binding Nuclear Protein 1; Poly(A)-Binding Protein, Nuclear 1; Poly(A) Binding Protein, Nuclear 1; Nuclear Poly(A)-Binding Protein 1; Poly(A) Binding Protein II; Poly(A)-Binding Protein II; Poly(A) Binding Protein 2; Poly(A)-Binding Protein 2

Background

Gene Name: PABPN1

NCBI Gene Entry: [8106](#)

UniProt Entry: [Q86U42](#)

Application Information

Molecular Weight: Predicted, 33 kDa, observed, 49 kDa

Clonality: Rabbit monoclonal antibody

Clone ID: 24GB365

Species Reactivity: Human, mouse, rat

Applications Tested: Western blotting (WB), flow cytometry (FCM), immunocytochemistry (IC)

Immunogen

A synthesized peptide derived from human PABPN1

Isotype

Rabbit IgG

Storage Buffer

Supplied in PBS (pH 7.4) containing 50% glycerol, and 0.02% sodium azide.

Storage

Store at -20 °C for one year.

Recommended Dilutions

Western Blotting (WB): 1:1,000-1:5,000

Flow Cytometry (FCM): 1:2,000

Immunocytochemistry (IC): 1:100-1:1,000

SUPPORT

SUPPORT@GENUINBIOTECH.COM
TEL: +1-540-855-7041

ORDERS

SALES@GENUINBIOTECH.COM
FAX: +1-540-855-7041

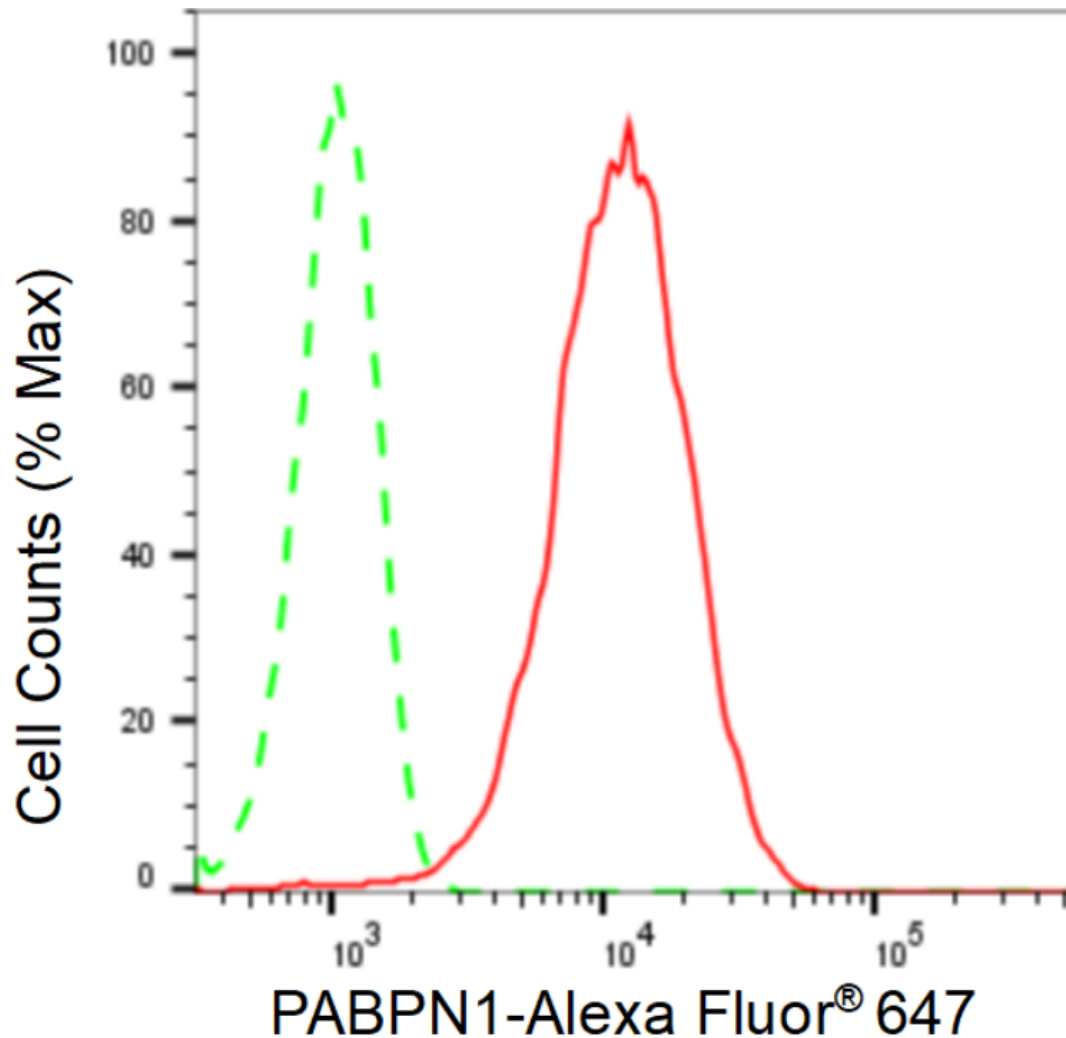
WWW.GENUINBIOTECH.COM

KD-Validated Anti-Poly(A) Binding Protein Nuclear 1 Recombinant Rabbit Monoclonal

PAGE 2

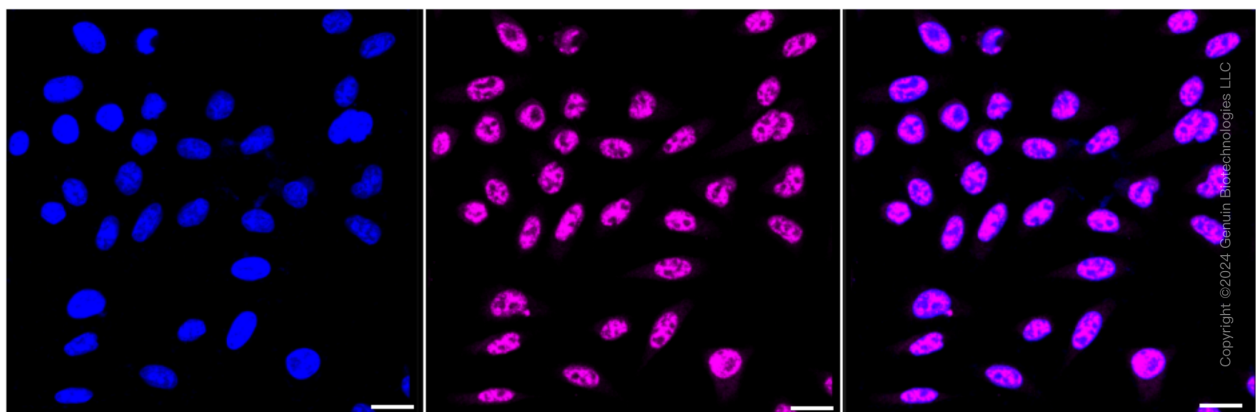
Note: This product is for research use only.

Validation Data



Copyright ©2024 Genuin Biotechnologies LLC

Flow cytometric analysis of PABPN1 expression in HepG2 cells using PABPN1 antibody (Cat#62337, 1:2,000). Green, isotype control; red, PABPN1.



Copyright ©2024 Genuin Biotechnologies LLC

SUPPORT

SUPPORT@GENUINBIOTECH.COM
TEL: +1-540-855-7041

ORDERS

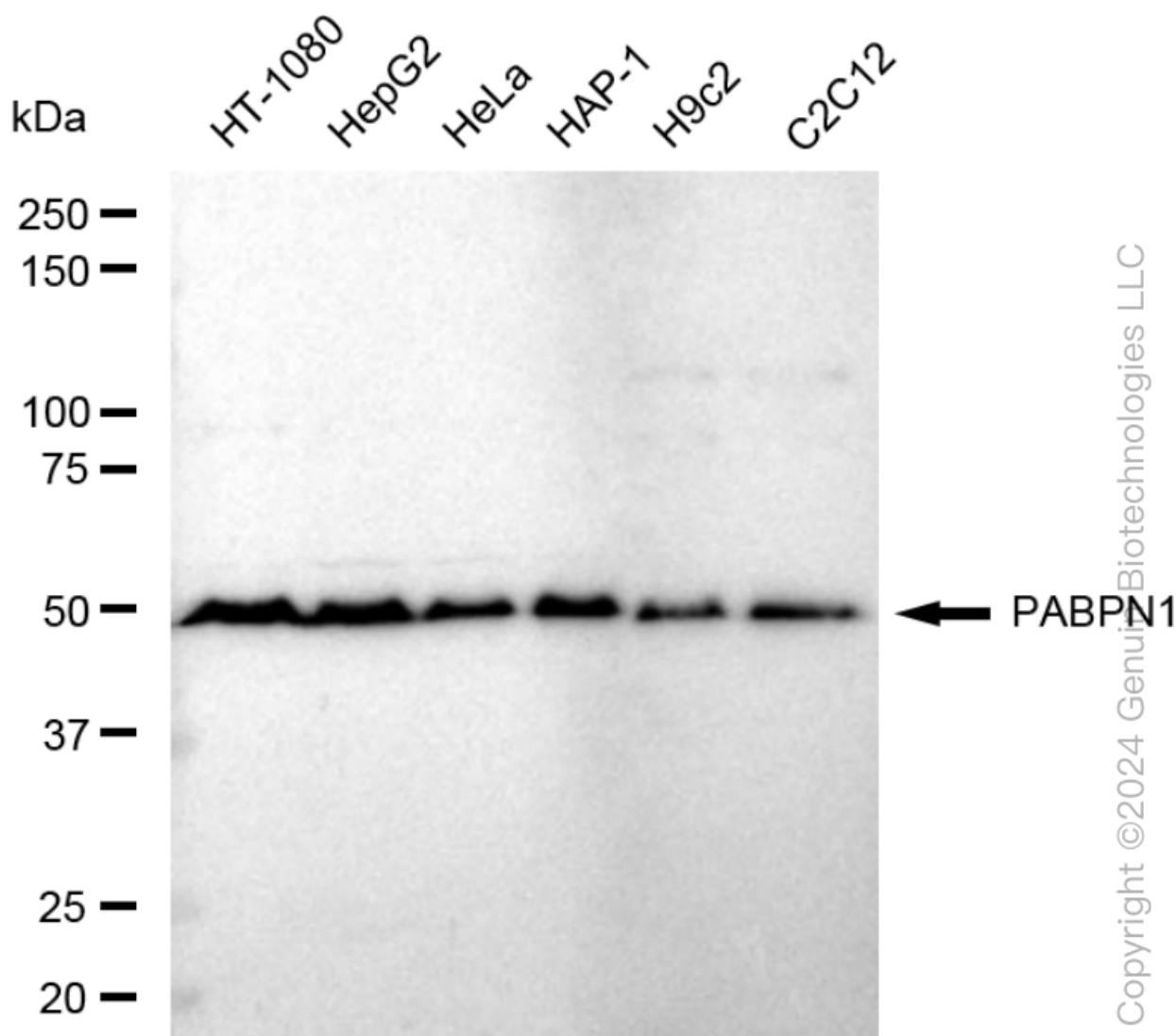
SALES@GENUINBIOTECH.COM
FAX: +1-540-855-7041

WWW.GENUINBIOTECH.COM

KD-Validated Anti-Poly(A) Binding Protein Nuclear 1 Recombinant Rabbit Monoclonal

PAGE 3

Immunocytochemical staining of Hela cells with anti-PABPN1 antibody (Cat#62337, 1:1,000). Nuclei were stained blue with DAPI; PABPN1 was stained magenta with Alexa Fluor® 647. Images were taken using Leica stellaris 5. Protein abundance based on laser Intensity and smart gain: High. Scale bar: 20 μ m.



Western blotting analysis using anti-PABPN1 antibody (Cat#62337). Total cell lysates (30 μ g) from various cell lines were loaded and separated by SDS-PAGE. The blot was incubated with anti-PABPN1 antibody (Cat#62337, 1:5,000) and HRP-conjugated goat anti-rabbit secondary antibody (Cat#201, 1:20,000) respectively. Image was developed using FeQ™ ECL Substrate Kit (Cat#226).

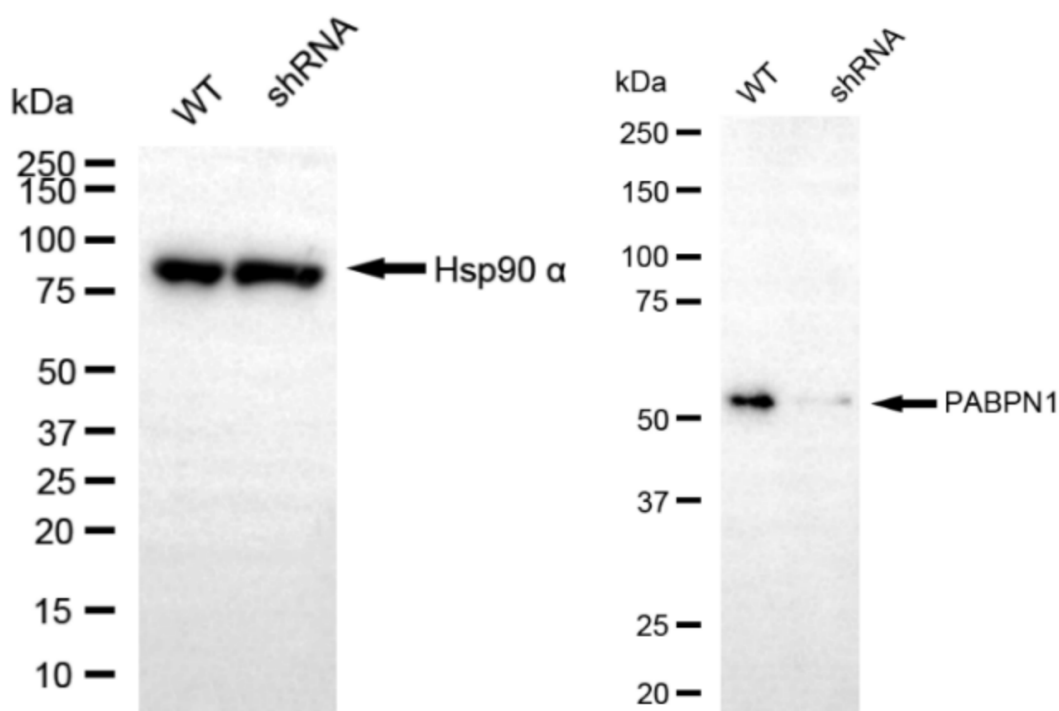
SUPPORT

SUPPORT@GENUINBIOTECH.COM
TEL: +1-540-855-7041

ORDERS

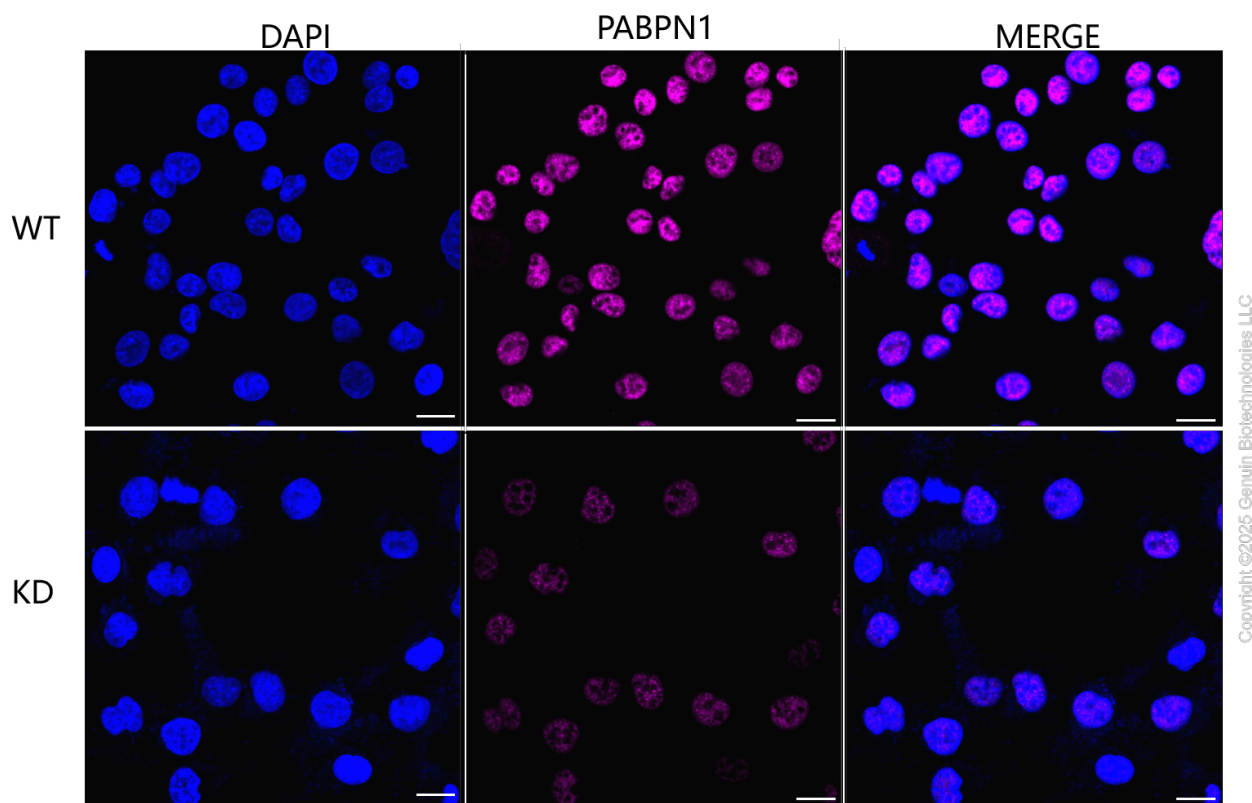
SALES@GENUINBIOTECH.COM
FAX: +1-540-855-7041

WWW.GENUINBIOTECH.COM



Copyright ©2024 Genuin Biotechnologies LLC

Western blotting analysis using anti-PABPN1 antibody (Cat#62337). PABPN1 expression in wild type (WT) and PABPN1 shRNA knockdown (KD) HT-1080 cells with 20 μ g of total cell lysates. Hsp90 α serves as a loading control. The blot was incubated with anti-PABPN1 antibody (Cat#62337, 1:5,000) and HRP-conjugated goat anti-rabbit secondary antibody (Cat#201, 1:20,000) respectively. Image was developed using NaQ™ ECL Substrate Kit (Cat#716).



Immunocytochemical staining of HT1080 cells using anti-PABPN1 antibody (Cat#62337, 1:1,000), Top panel: wild-type (WT); Bottom panel: PABPN1 shRNA knockdown (KD). Nuclei were stained blue with DAPI; PABPN1 was stained magenta with Alexa Fluor® 647. Scale bar, 20 μ m. Permeabilization: Triton.