

KD-Validated Anti-Metastasis Associated 1 Family Member 2 Recombinant Rabbit



Catalog #: 62344

Aliases

Metastasis Associated 1 Family Member 2; MTA1L1; Metastasis Associated Gene Family, Member 2; P53 Target Protein In Deacetylase Complex; Metastasis-Associated Protein MTA2; Metastasis-Associated 1-Like 1; MTA1-L1 Protein; MTA1-L1; PID; Metastasis -Associated Gene 1-Like 1; Metastasis-Associated Protein 2

Background

Gene Name: MTA2

NCBI Gene Entry: [9219](#)

UniProt Entry: [O94776](#)

Application Information

Molecular Weight: Predicted, 75 kDa, observed, 73 kDa

Clonality: Rabbit monoclonal antibody

Clone ID: 24GB400

Species Reactivity: Human

Applications Tested: Western blotting (WB), flow cytometry (FCM), immunocytochemistry (IC)

Immunogen

A synthesized peptide derived from human MTA2

Isotype

Rabbit IgG

Storage Buffer

Supplied in PBS (pH 7.4) containing 50% glycerol, and 0.02% sodium azide.

Storage

Store at -20 °C for one year.

Recommended Dilutions

Western Blotting (WB): 1:1,000-1:5,000

Flow Cytometry (FCM): 1:2,000

Immunocytochemistry (IC): 1:100-1:1,000

SUPPORT

SUPPORT@GENUINBIOTECH.COM
TEL: +1-540-855-7041

ORDERS

SALES@GENUINBIOTECH.COM
FAX: +1-540-855-7041

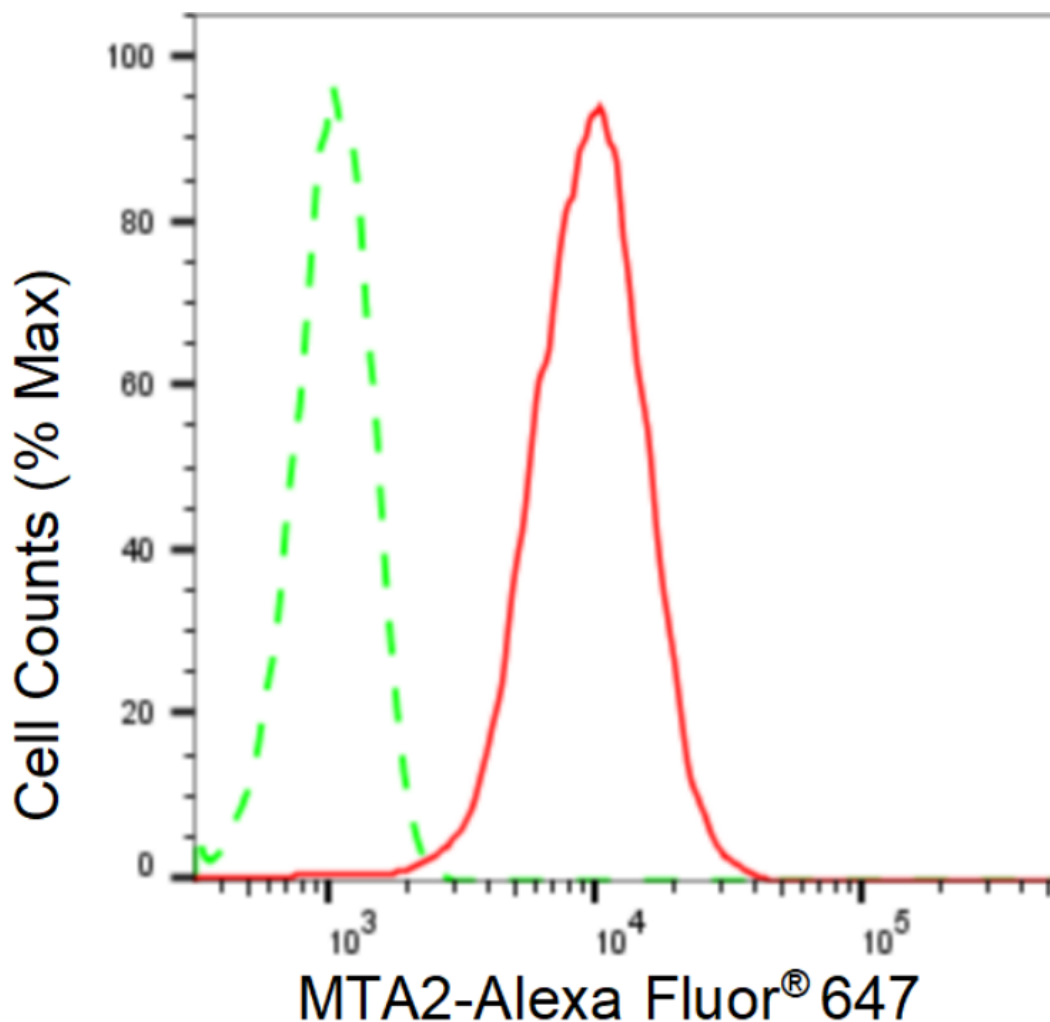
WWW.GENUINBIOTECH.COM

KD-Validated Anti-Metastasis Associated 1 Family Member 2 Recombinant Rabbit

PAGE 2

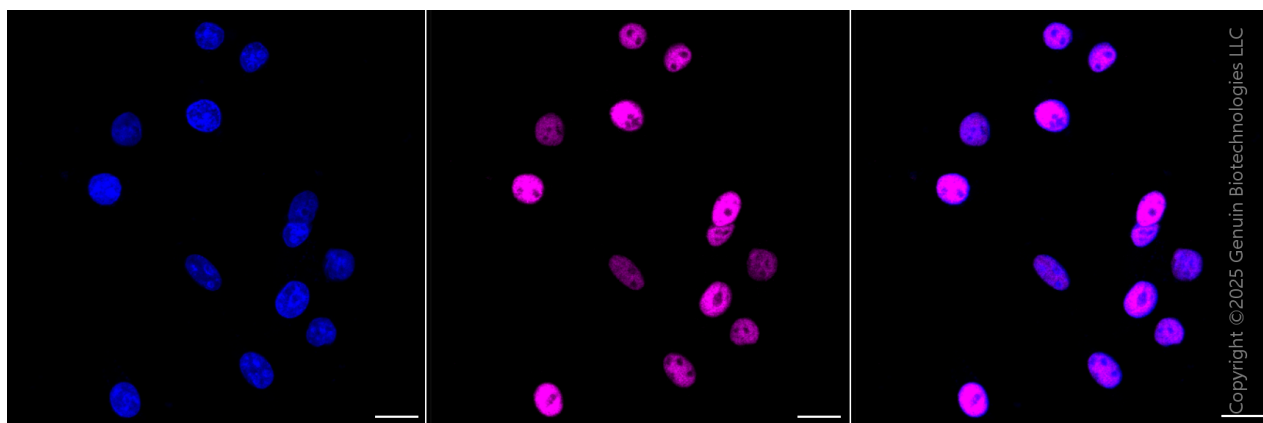
Note: This product is for research use only.

Validation Data



Copyright ©2024 Genuin Biotechnologies LLC

Flow cytometric analysis of MTA2 expression in HepG2 cells using MTA2 antibody (Cat#62344, 1:2,000). Green, isotype control; red, MTA2.



Copyright ©2025 Genuin Biotechnologies LLC

SUPPORT

SUPPORT@GENUINBIOTECH.COM
TEL: +1-540-855-7041

ORDERS

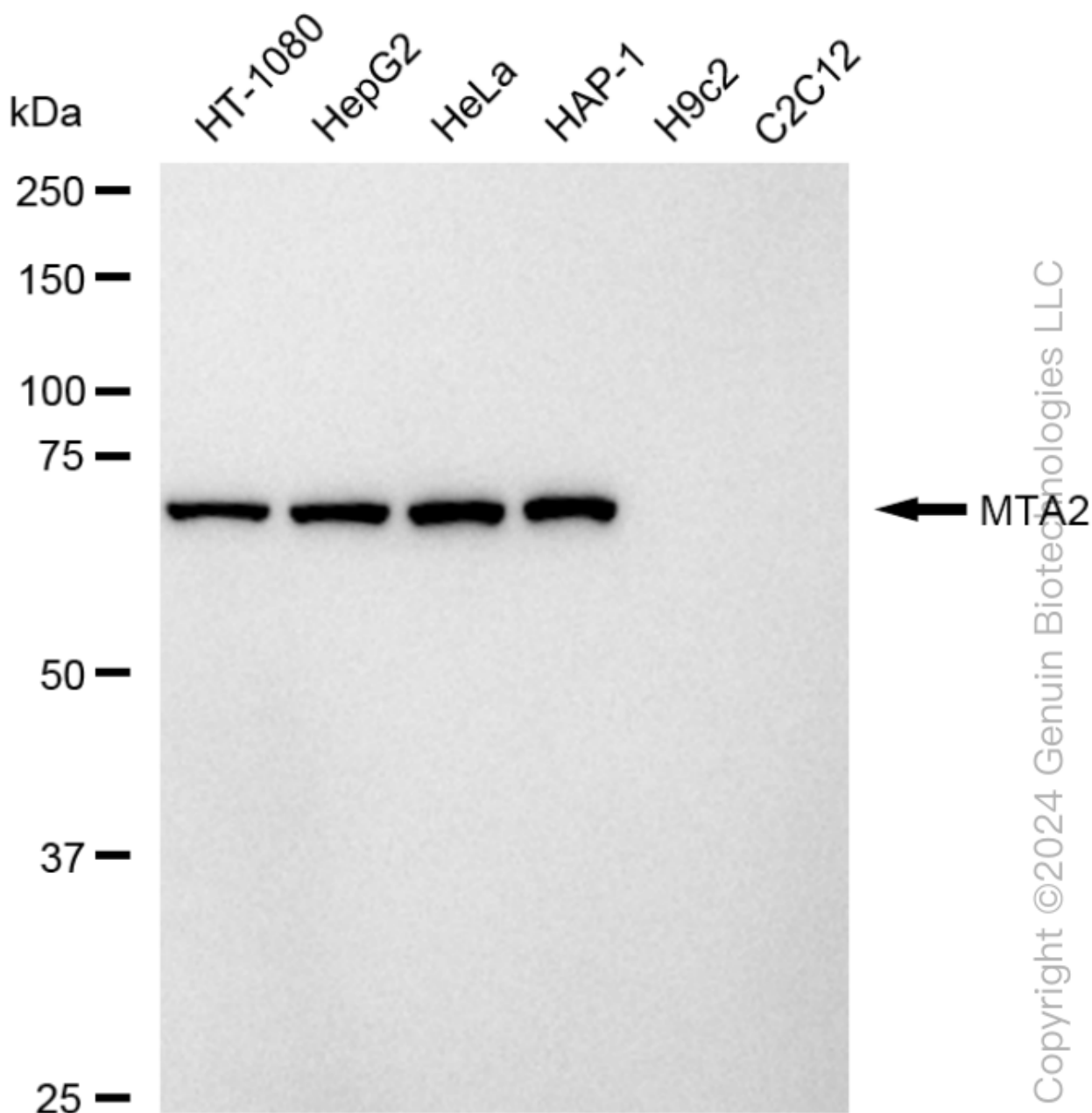
SALES@GENUINBIOTECH.COM
FAX: +1-540-855-7041

WWW.GENUINBIOTECH.COM

KD-Validated Anti-Metastasis Associated 1 Family Member 2 Recombinant Rabbit

PAGE 3

Immunocytochemical staining of HepG2 cells with anti-MTA2 antibody (Cat#62344, 1:1,000). Nuclei were stained blue with DAPI; MTA2 was stained magenta with Alexa Fluor® 647. Images were taken using Leica stellaris 5. Protein abundance based on laser Intensity and Smart Gain□ High. Scale bar, 20 μm.



Western blotting analysis using anti-MTA2 antibody (Cat#62344). Total cell lysates (30 μg) from various cell lines were loaded and separated by SDS-PAGE. The blot was incubated with anti-MTA2 antibody (Cat#62344, 1:5,000) and HRP-conjugated goat anti-rabbit secondary antibody (Cat#201, 1:20,000) respectively. Image was developed using FeQ™ ECL Substrate Kit (Cat#226).

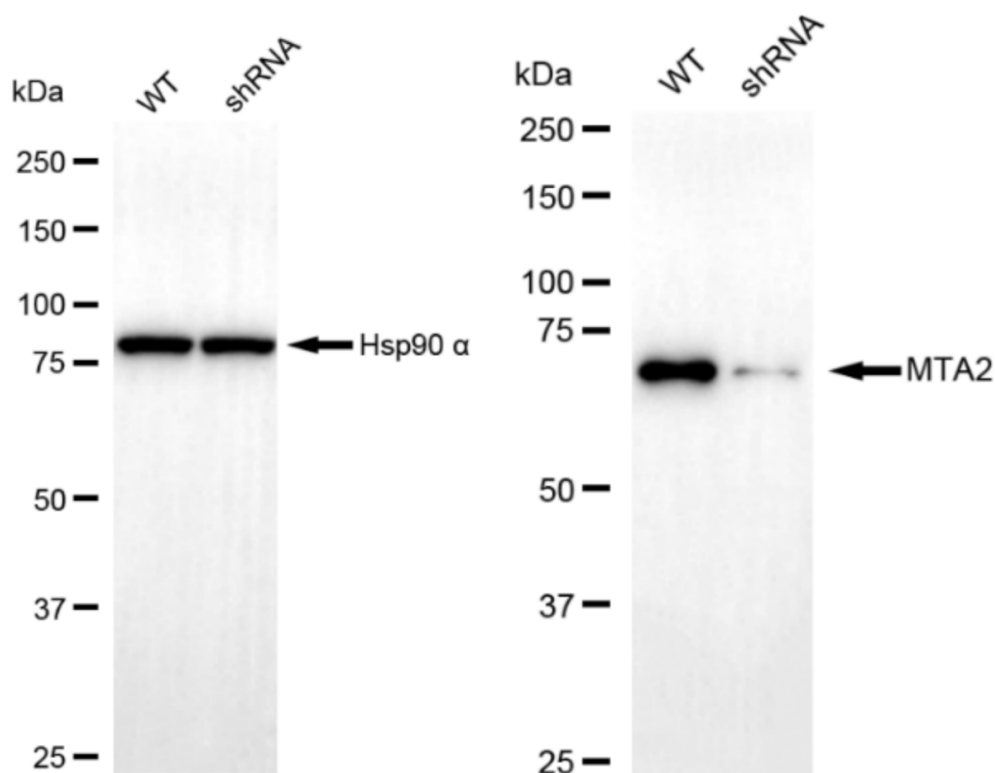
SUPPORT

SUPPORT@GENUINBIOTECH.COM
TEL: +1-540-855-7041

ORDERS

SALES@GENUINBIOTECH.COM
FAX: +1-540-855-7041

WWW.GENUINBIOTECH.COM



Copyright ©2024 Genuin Biotechnologies LLC

Western blotting analysis using anti-MTA2 antibody (Cat#62344). MTA2 expression in wild type (WT) and MTA2 shRNA knockdown (KD) HeLa cells with 20 µg of total cell lysates. β-Tubulin serves as a loading control. The blot was incubated with anti-MTA2 antibody (Cat#62344, 1:5,000) and HRP-conjugated goat anti-rabbit secondary antibody (Cat#201, 1:20,000) respectively. Image was developed using NaQ™ ECL Substrate Kit (Cat#716).