

KD-Validated Anti-Methyl-CpG Binding Domain Protein 1 Recombinant Rabbit



Catalog #: 62346

Aliases

Methyl-CpG Binding Domain Protein 1; CXXC3; PCM1; Protein Containing Methyl-CpG-Binding Domain 1; Methyl-CpG-Binding Domain Protein 1; CXXC-Type Zinc Finger Protein 3; Protein Containing MBD 1; The Regulator Of Fibroblast Growth Factor 2 (FGF-2) Transcription; Methyl-CpG-Binding Protein MBD1; RFT

Background

Gene Name: MBD1

NCBI Gene Entry: [4152](#)

UniProt Entry: [Q9UIS9](#)

Application Information

Molecular Weight: Predicted, 67 kDa, observed, 70-80 kDa

Clonality: Rabbit monoclonal antibody

Clone ID: 24GB405

Species Reactivity: Human, rat

Applications Tested: Western blotting (WB), flow cytometry (FCM), immunocytochemistry (IC)

Immunogen

A synthesized peptide derived from human MBD1

Isotype

Rabbit IgG

Storage Buffer

Supplied in PBS (pH 7.4) containing 50% glycerol, and 0.02% sodium azide.

Storage

Store at -20 °C for one year.

Recommended Dilutions

Western Blotting (WB): 1:1,000-1:5,000

Flow Cytometry (FCM): 1:2,000

Immunocytochemistry (IC): 1:100-1:1,000

SUPPORT

SUPPORT@GENUINBIOTECH.COM
TEL: +1-540-855-7041

ORDERS

SALES@GENUINBIOTECH.COM
FAX: +1-540-855-7041

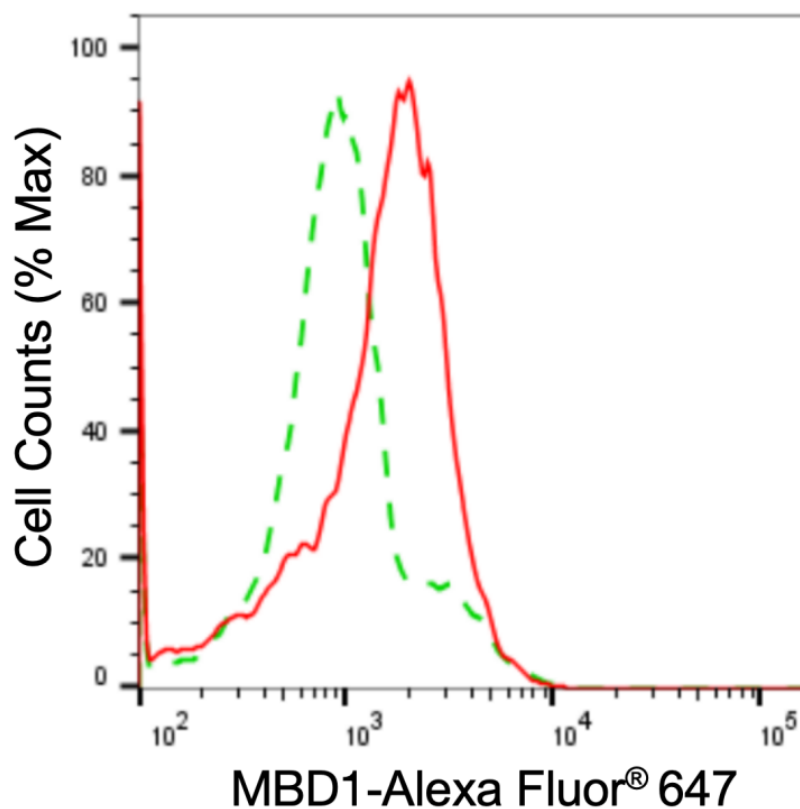
WWW.GENUINBIOTECH.COM

KD-Validated Anti-Methyl-CpG Binding Domain Protein 1 Recombinant Rabbit

PAGE 2

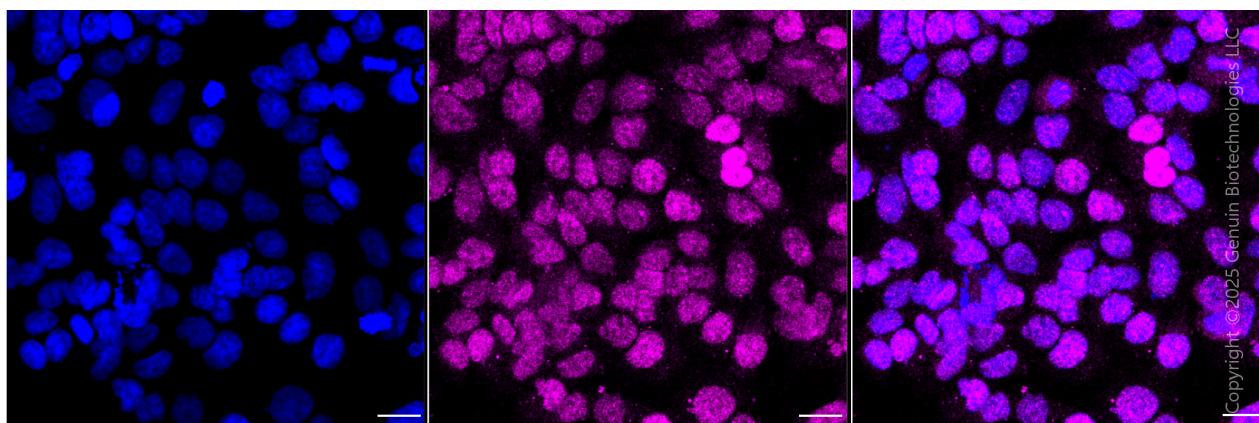
Note: This product is for research use only.

Validation Data



Copyright ©2024 Genuin Biotechnologies LLC

Flow cytometric analysis of MBD1 expression in HAP-1 cells using anti-MBD1 antibody (Cat#62346, 1:2,000). Green, isotype control; red, MBD1.



Immunocytochemical staining of HAP1 cells with anti-MBD1 antibody (Cat#62346, 1:1,000) . Nuclei were stained blue with DAPI; MBD1 was stained magenta with Alexa Fluor® 647. Images were taken using Leica stellaris 5. Protein abundance based on laser Intensity and smart gain:Low. Scale bar, 20 µm.

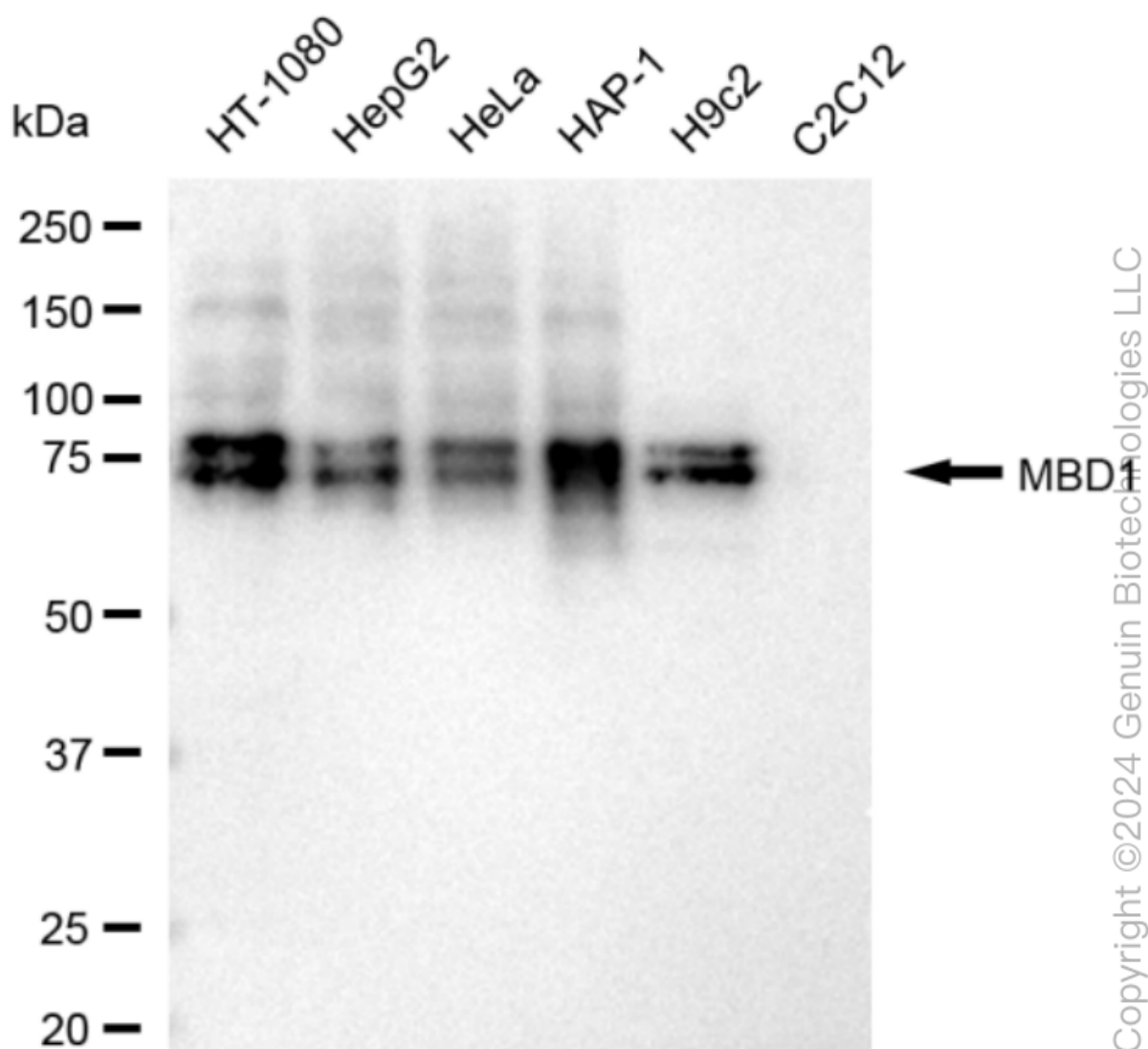
SUPPORT

SUPPORT@GENUINBIOTECH.COM
TEL: +1-540-855-7041

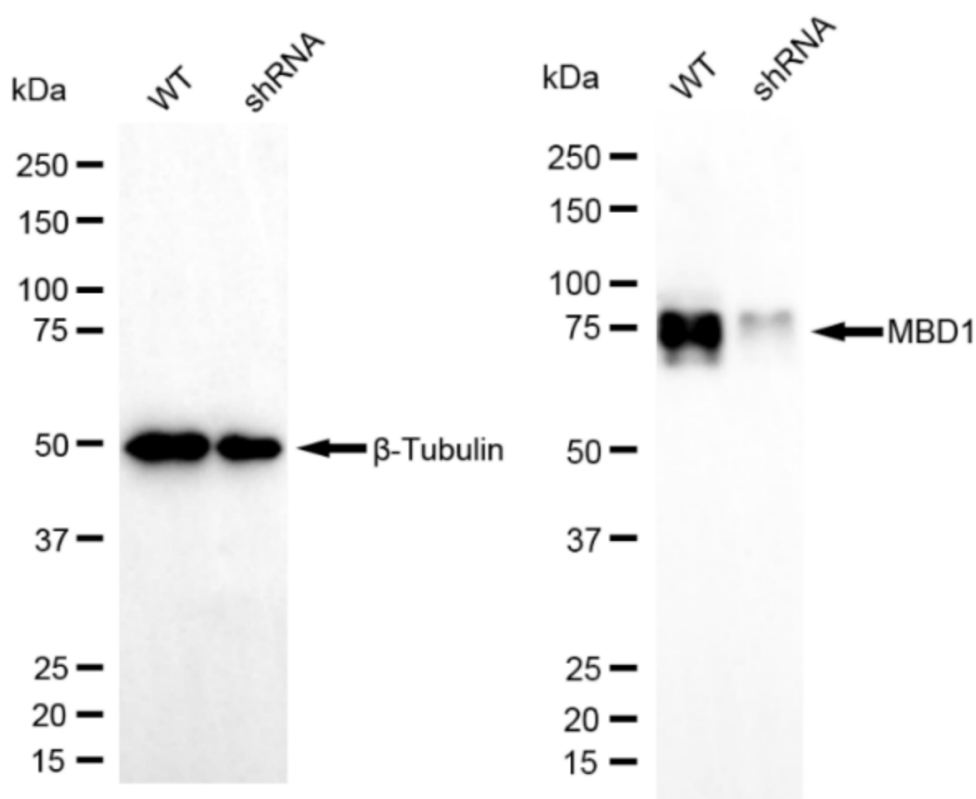
ORDERS

SALES@GENUINBIOTECH.COM
FAX: +1-540-855-7041

WWW.GENUINBIOTECH.COM

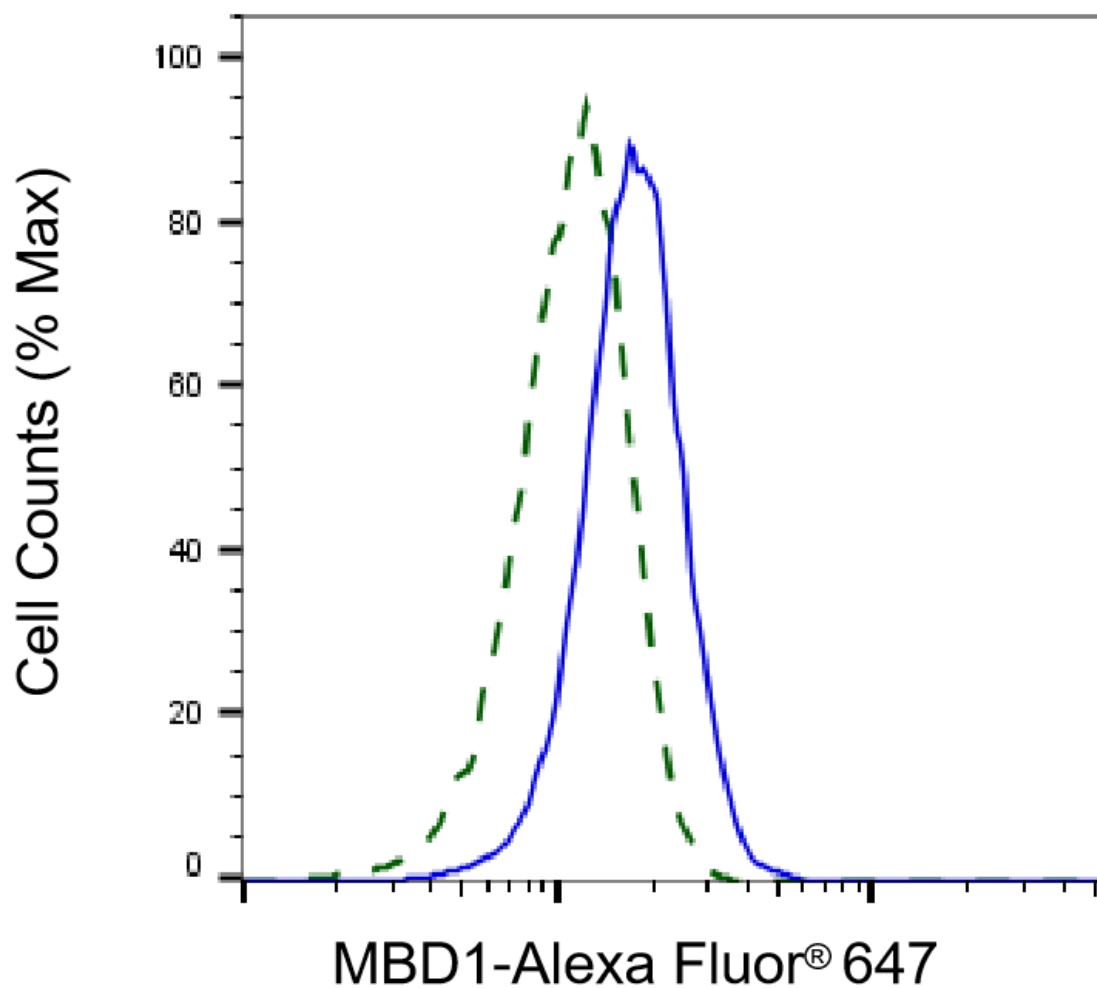


Western blotting analysis using anti-MBD1 antibody (Cat#62346). Total cell lysates (30 µg) from various cell lines were loaded and separated by SDS-PAGE. The blot was incubated with anti-MBD1 antibody (Cat#62346, 1:5,000) and HRP-conjugated goat anti-rabbit secondary antibody (Cat#201, 1:20,000) respectively. Image was developed using FeQ™ ECL Substrate Kit (Cat#226).



Copyright ©2024 Genuin Biotechnologies LLC

Western blotting analysis using anti-MBD1 antibody (Cat#62346). MBD1 expression in wild type (WT) and MBD1 shRNA knockdown (KD) HeLa cells with 20 μ g of total cell lysates. Hsp90 α serves as a loading control. The blot was incubated with anti-MBD1 antibody (Cat#62346, 1:5,000) and HRP-conjugated goat anti-rabbit secondary antibody (Cat#201, 1:20,000) respectively. Image was developed using NaQ™ ECL Substrate Kit (Cat#716).



Copyright ©2025 Genuin Biotechnologies LLC

Validation of MBD1 knockdown using flow cytometry. Wild-type(WT, Blue) and knockdown(KD, Green) HeLa cells were stained with anti-MBD1 antibody (Cat#62346, 1:2,000) and analyzed using BD flow cytometer.