

KD-Validated Anti-Methyl-CpG Binding Domain Protein 2 Recombinant Rabbit



Catalog #: 62358

Aliases

Methyl-CpG Binding Domain Protein 2; Methyl-CpG-Binding Domain Protein 2; Demethylase; DMTase; Methyl-CpG-Binding Protein MBD2; NY-CO-41

Background

Gene Name: MBD2

NCBI Gene Entry: [8932](#)

UniProt Entry: [Q9UBB5](#)

Application Information

Molecular Weight: Predicted, 43 kDa, observed, 29,43 kDa

Clonality: Rabbit monoclonal antibody

Clone ID: 24GB460

Species Reactivity: Human, mouse, rat

Applications Tested: Western blotting (WB), flow cytometry (FCM), immunocytochemistry (IC)

Immunogen

A synthesized peptide derived from human MBD2

Isotype

Rabbit IgG

Storage Buffer

Supplied in PBS (pH 7.4) containing 50% glycerol, and 0.02% sodium azide.

Storage

Store at -20 °C for one year.

Recommended Dilutions

Western Blotting (WB): 1:2,000-1:10,000

Flow Cytometry (FCM): 1:2,000

Immunocytochemistry (IC): 1:100-1:1,000

Note: This product is for research use only.

Validation Data

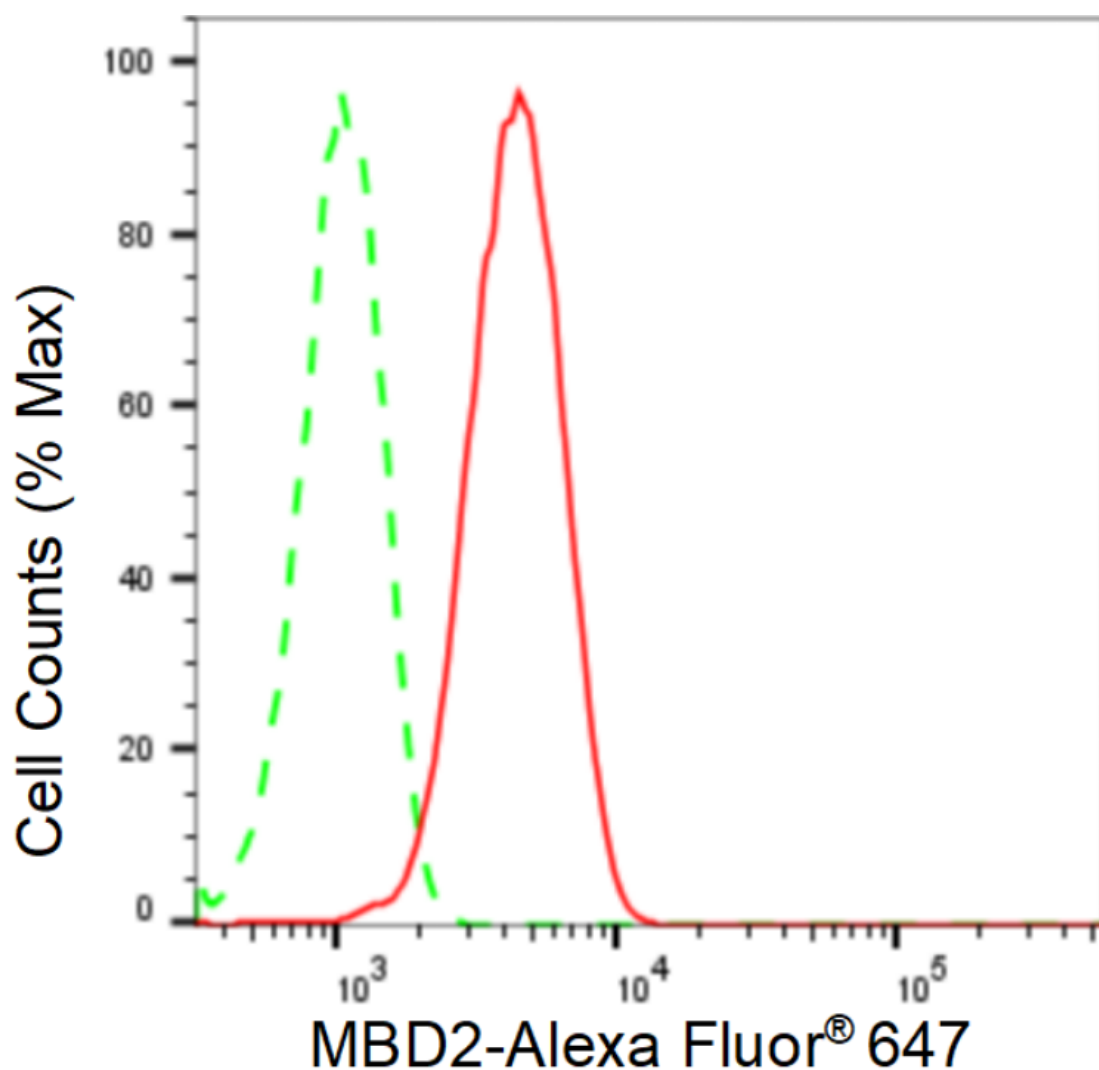
SUPPORT

SUPPORT@GENUINBIOTECH.COM
TEL: +1-540-855-7041

ORDERS

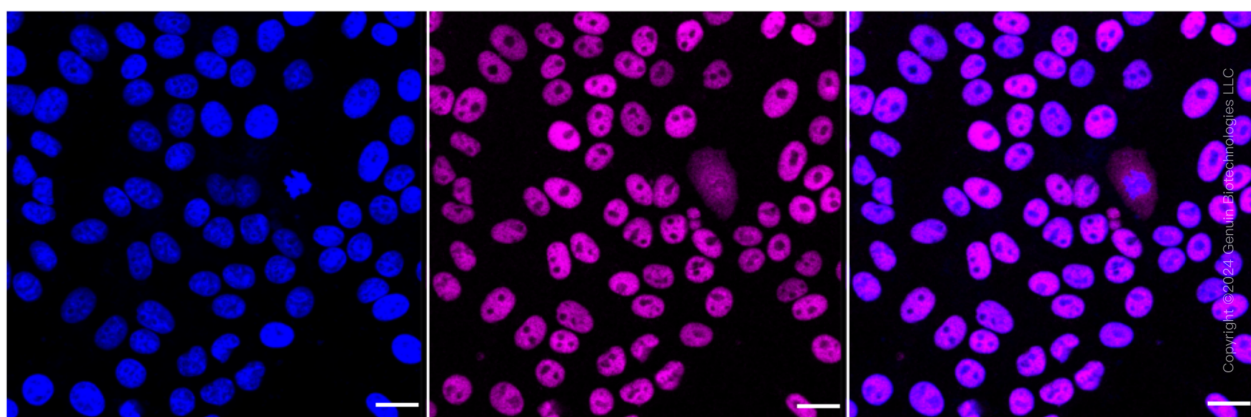
SALES@GENUINBIOTECH.COM
FAX: +1-540-855-7041

WWW.GENUINBIOTECH.COM



Copyright ©2024 Genuin Biotechnologies LLC

Flow cytometric analysis of MBD2 expression in HepG2 cells using MBD2 antibody (Cat#62358, 1:2,000). Green, isotype control; red, MBD2.



Copyright ©2024 Genuin Biotechnologies LLC

Immunocytochemical staining of HepG2 cells with anti-MBD2 antibody (Cat#62358, 1:1,000). Nuclei were stained blue with DAPI; MBD2 was stained magenta with Alexa Fluor® 647. Images

SUPPORT

SUPPORT@GENUINBIOTECH.COM
TEL: +1-540-855-7041

ORDERS

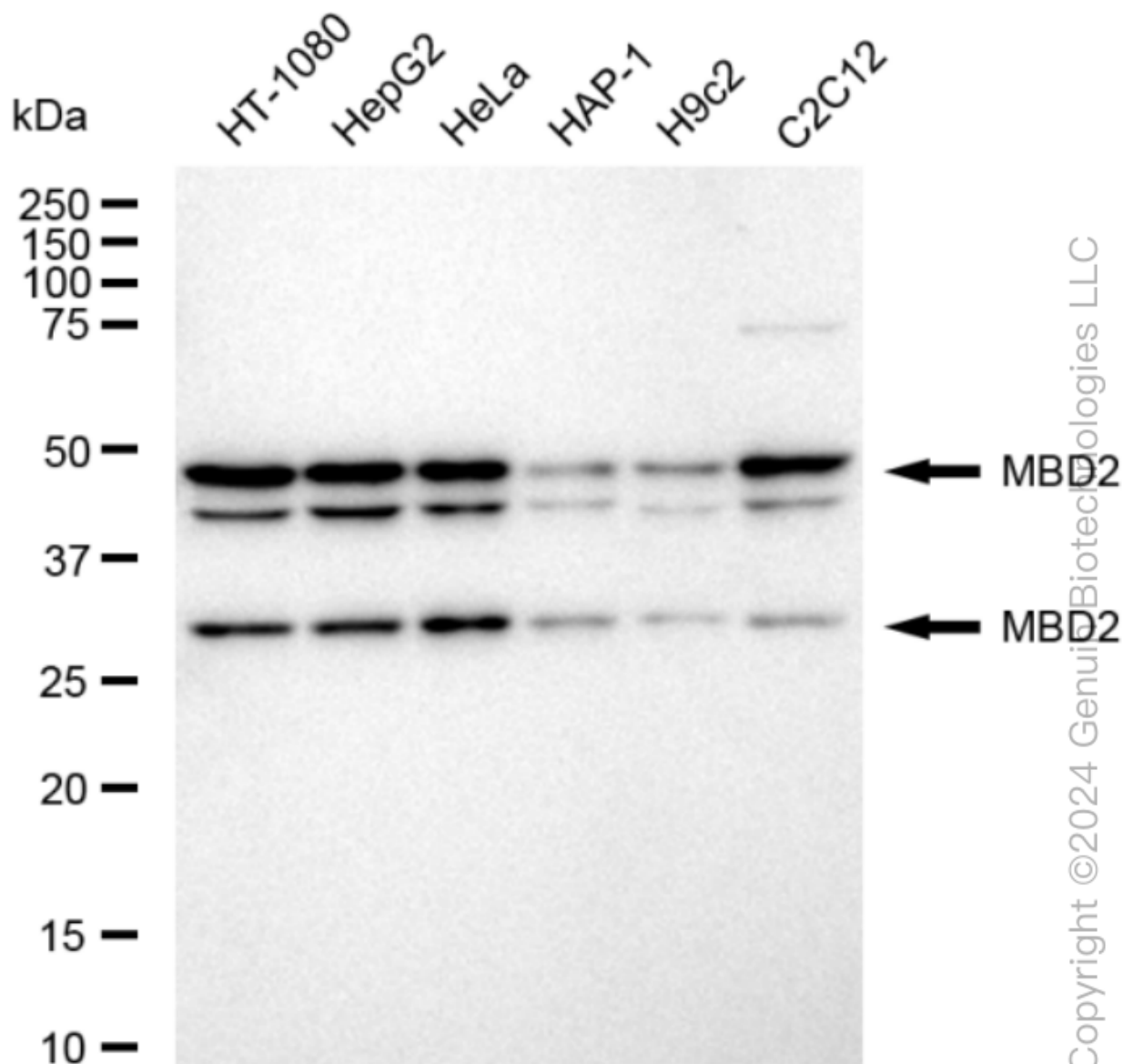
SALES@GENUINBIOTECH.COM
FAX: +1-540-855-7041

WWW.GENUINBIOTECH.COM

KD-Validated Anti-Methyl-CpG Binding Domain Protein 2 Recombinant Rabbit

PAGE 3

were taken using Leica stellaris 5. Protein abundance based on laser Intensity and smart gain: Medium. Scale bar: 20 μ m.



Western blotting analysis using anti-MBD2 antibody (Cat#62358). Total cell lysates (30 μ g) from various cell lines were loaded and separated by SDS-PAGE. The blot was incubated with anti-MBD2 antibody (Cat#62358, 1:10,000) and HRP-conjugated goat anti-rabbit secondary antibody (Cat#201, 1:20,000) respectively. Image was developed using FeQ™ ECL Substrate Kit (Cat#226).

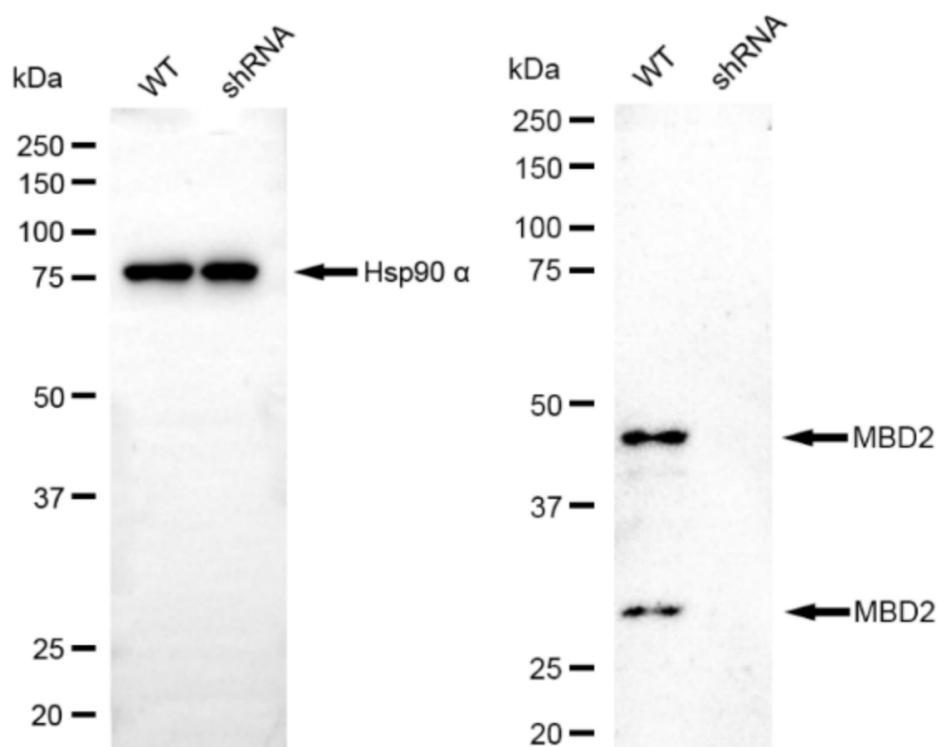
SUPPORT

SUPPORT@GENUINBIOTECH.COM
TEL: +1-540-855-7041

ORDERS

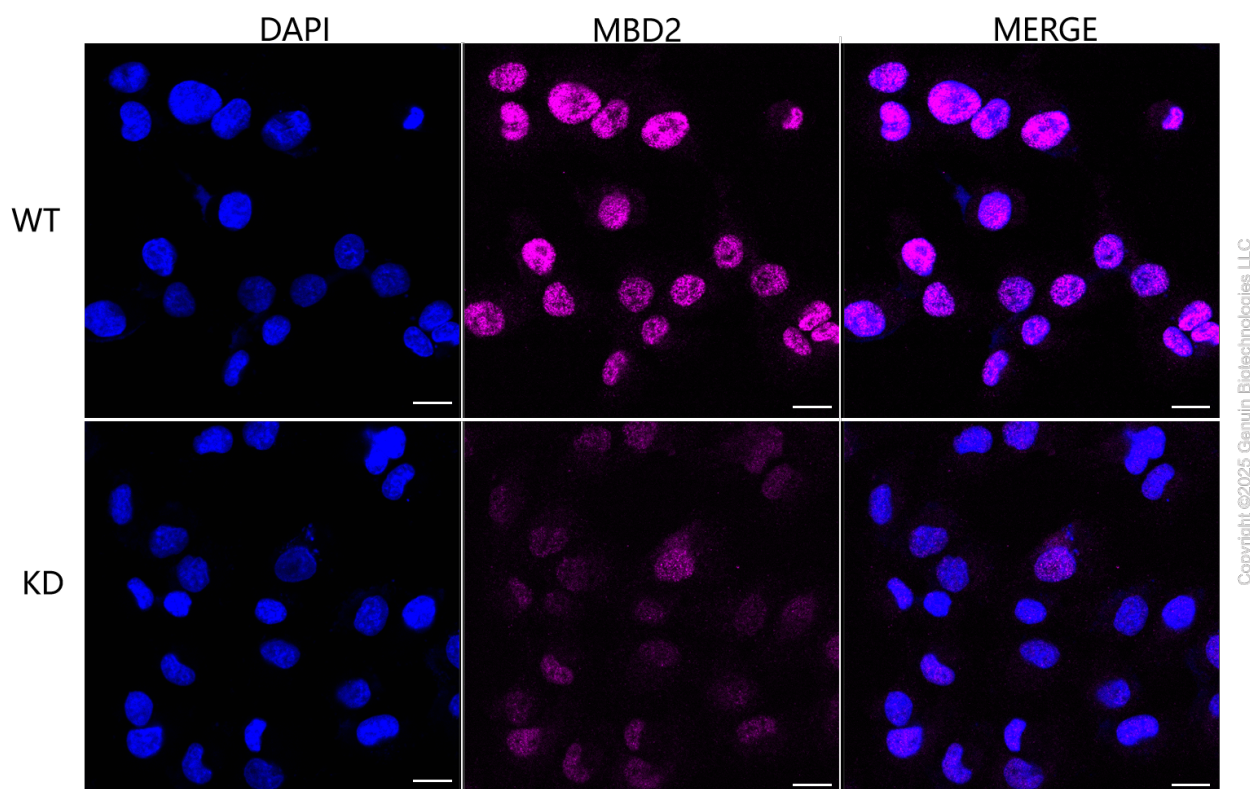
SALES@GENUINBIOTECH.COM
FAX: +1-540-855-7041

WWW.GENUINBIOTECH.COM



Copyright ©2024 Genuin Biotechnologies LLC

Western blotting analysis using anti-MBD2 antibody (Cat#62358). MBD2 expression in wild type (WT) and MBD2 shRNA knockdown (KD) HT-1080 cells with 20 µg of total cell lysates. β-Tubulin serves as a loading control. The blot was incubated with anti-MBD2 antibody (Cat#62358, 1:10,000) and HRP-conjugated goat anti-rabbit secondary antibody (Cat#201, 1:20,000) respectively. Image was developed using NaQ™ ECL Substrate Kit (Cat#716).



Immunocytochemical staining of HT-1080 cells using anti-MBD2 antibody (Cat#62358, 1:1,000), Top panel: wild-type (WT); Bottom panel: MBD2 shRNA knockdown (KD). Nuclei were stained blue with DAPI; MBD2 was stained magenta with Alexa Fluor® 647. Scale bar, 20 μ m. Permeabilization: Triton.