

KD-Validated Anti-Non-Homologous End Joining Factor 1 Recombinant Rabbit



Catalog #: 62363

Aliases

Non-Homologous End Joining Factor 1; XLF; XRCC4-Like Factor; Non-Homologous End-Joining Factor 1; Nonhomologous End-Joining Factor 1; Protein Cernunnos; Cernunnos; FLJ12610

Background

Gene Name: NHEJ1

NCBI Gene Entry: [79840](#)

UniProt Entry: [Q9H9Q4](#)

Application Information

Molecular Weight: Predicted, 33 kDa, observed, 39 kDa

Clonality: Rabbit monoclonal antibody

Clone ID: 24GB480

Species Reactivity: Human

Applications Tested: Western blotting (WB), flow cytometry (FCM), immunocytochemistry (IC)

Immunogen

A synthesized peptide derived from human XLF

Isotype

Rabbit IgG

Storage Buffer

Supplied in PBS (pH 7.4) containing 50% glycerol, and 0.02% sodium azide.

Storage

Store at -20 °C for one year.

Recommended Dilutions

Western Blotting (WB): 1:1,000-1:5,000

Flow Cytometry (FCM): 1:2,000

Immunocytochemistry (IC): 1:100-1:1,000

Note: This product is for research use only.

SUPPORT

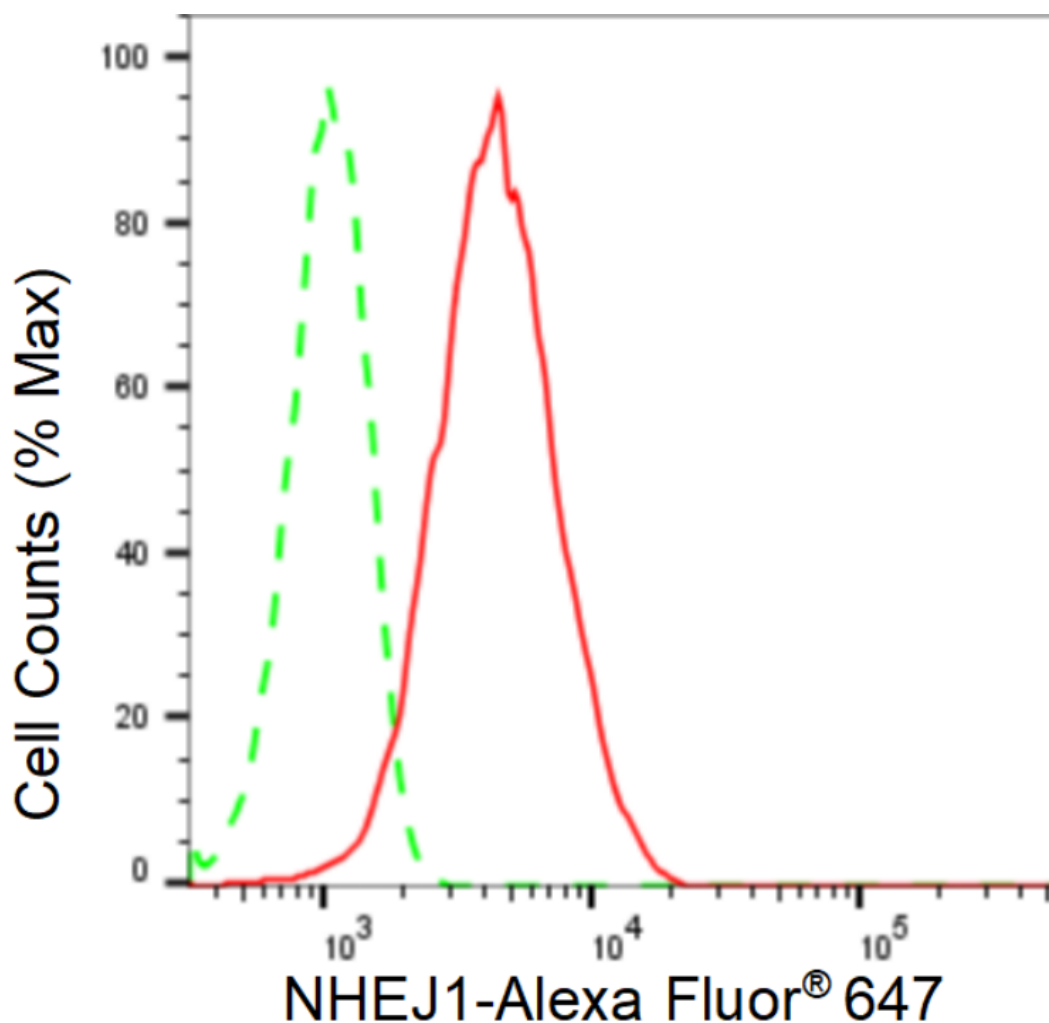
SUPPORT@GENUINBIOTECH.COM
TEL: +1-540-855-7041

ORDERS

SALES@GENUINBIOTECH.COM
FAX: +1-540-855-7041

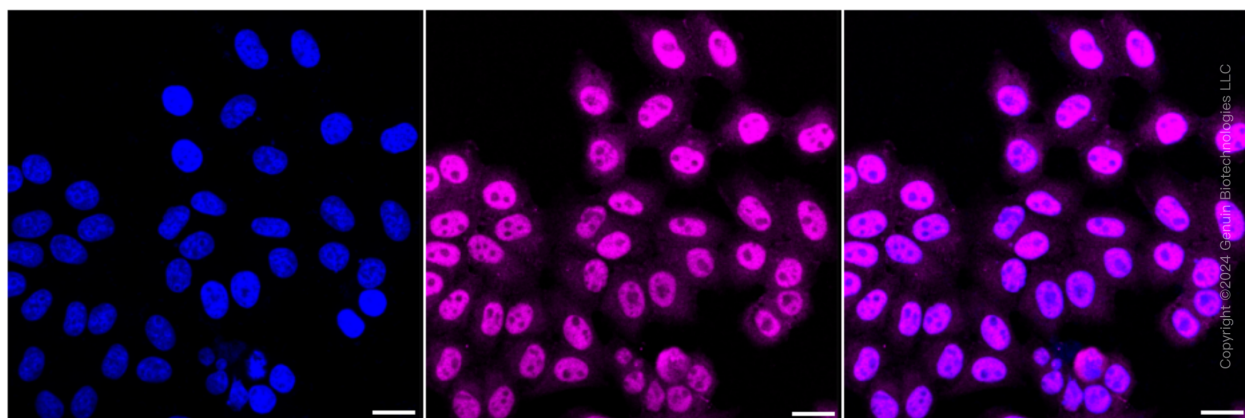
WWW.GENUINBIOTECH.COM

Validation Data



Copyright ©2024 Genuin Biotechnologies LLC

Flow cytometric analysis of NHEJ1 expression in HepG2 cells using NHEJ1 antibody (Cat#62363, 1:2,000). Green, isotype control; red, NHEJ1.



Copyright ©2024 Genuin Biotechnologies LLC

Immunocytochemical staining of HepG2 cells with anti-NHEJ1 antibody (Cat#62363, 1:1,000).

SUPPORT

SUPPORT@GENUINBIOTECH.COM
TEL: +1-540-855-7041

ORDERS

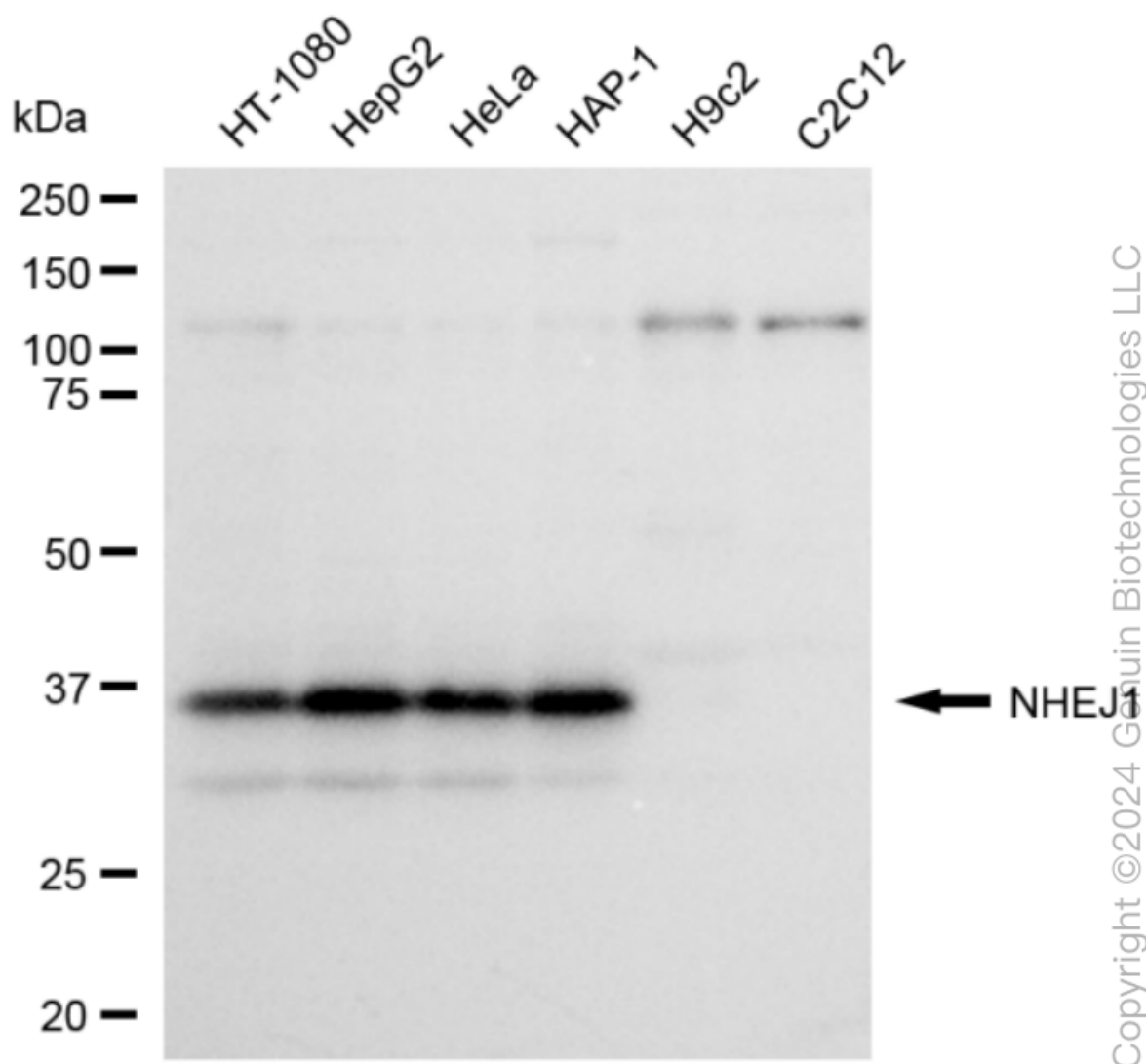
SALES@GENUINBIOTECH.COM
FAX: +1-540-855-7041

WWW.GENUINBIOTECH.COM

KD-Validated Anti-Non-Homologous End Joining Factor 1 Recombinant Rabbit

PAGE 3

Nuclei were stained blue with DAPI; NHEJ1 was stained magenta with Alexa Fluor® 647. Images were taken using Leica stellaris 5. Protein abundance based on laser Intensity and smart gain: High. Scale bar: 20 µm.



Western blotting analysis using anti-NHEJ1 antibody (Cat#62363). Total cell lysates (30 µg) from various cell lines were loaded and separated by SDS-PAGE. The blot was incubated with anti-NHEJ1 antibody (Cat#62363, 1:5,000) and HRP-conjugated goat anti-rabbit secondary antibody (Cat#201, 1:20,000) respectively. Image was developed using FeQ™ ECL Substrate Kit (Cat#226).

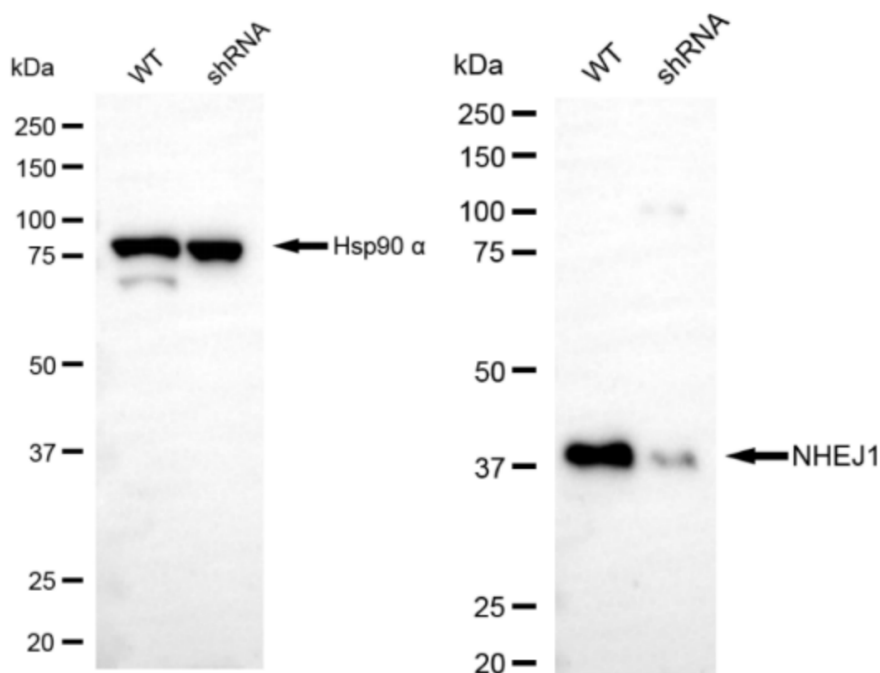
SUPPORT

SUPPORT@GENUINBIOTECH.COM
TEL: +1-540-855-7041

ORDERS

SALES@GENUINBIOTECH.COM
FAX: +1-540-855-7041

WWW.GENUINBIOTECH.COM



Copyright ©2024 Genuin Biotechnologies LLC

Western blotting analysis using anti-NHEJ1 antibody (Cat#62363). NHEJ1 expression in wild type (WT) and NHEJ1 shRNA knockdown (KD) HeLa cells with 20 µg of total cell lysates. β-Tubulin serves as a loading control. The blot was incubated with anti-NHEJ1 antibody (Cat#62363, 1:5,000) and HRP-conjugated goat anti-rabbit secondary antibody (Cat#201, 1:20,000) respectively. Image was developed using NaQ™ ECL Substrate Kit (Cat#716).