

# KD-Validated Anti-NSDHL Recombinant Rabbit Monoclonal Antibody



**Catalog #: 62364**

## Aliases

NAD(P) Dependent Steroid Dehydrogenase-Like; SDR31E1; XAP104; H105e3; Sterol-4-Alpha-Carboxylate 3-Dehydrogenase, Decarboxylating; Short Chain Dehydrogenase/Reductase Family 31E, Member 1; Protein H105e3; EC 1.1.1.170; NAD(P) Dependent Steroid Dehydrogenase-Like Protein Transcript; Epididymis Secretory Sperm Binding Protein; H105E3

## Background

Gene Name: NSDHL

NCBI Gene Entry: [50814](#)

UniProt Entry: [Q15738](#)

## Application Information

Molecular Weight: Predicted, 42 kDa, observed, 38 kDa

Clonality: Rabbit monoclonal antibody

Clone ID: 24GB485

Species Reactivity: Human

Applications Tested: Western blotting (WB), flow cytometry (FCM), immunocytochemistry (IC)

## Immunogen

A synthesized peptide derived from human NSDHL

## Isotype

Rabbit IgG

## Storage Buffer

Supplied in PBS (pH 7.4) containing 50% glycerol, and 0.02% sodium azide.

## Storage

Store at -20 °C for one year.

## Recommended Dilutions

Western Blotting (WB): 1:1,000-1:5,000

Flow Cytometry (FCM): 1:2,000

Immunocytochemistry (IC): 1:100-1:1,000

---

### SUPPORT

SUPPORT@GENUINBIOTECH.COM  
TEL: +1-540-855-7041

### ORDERS

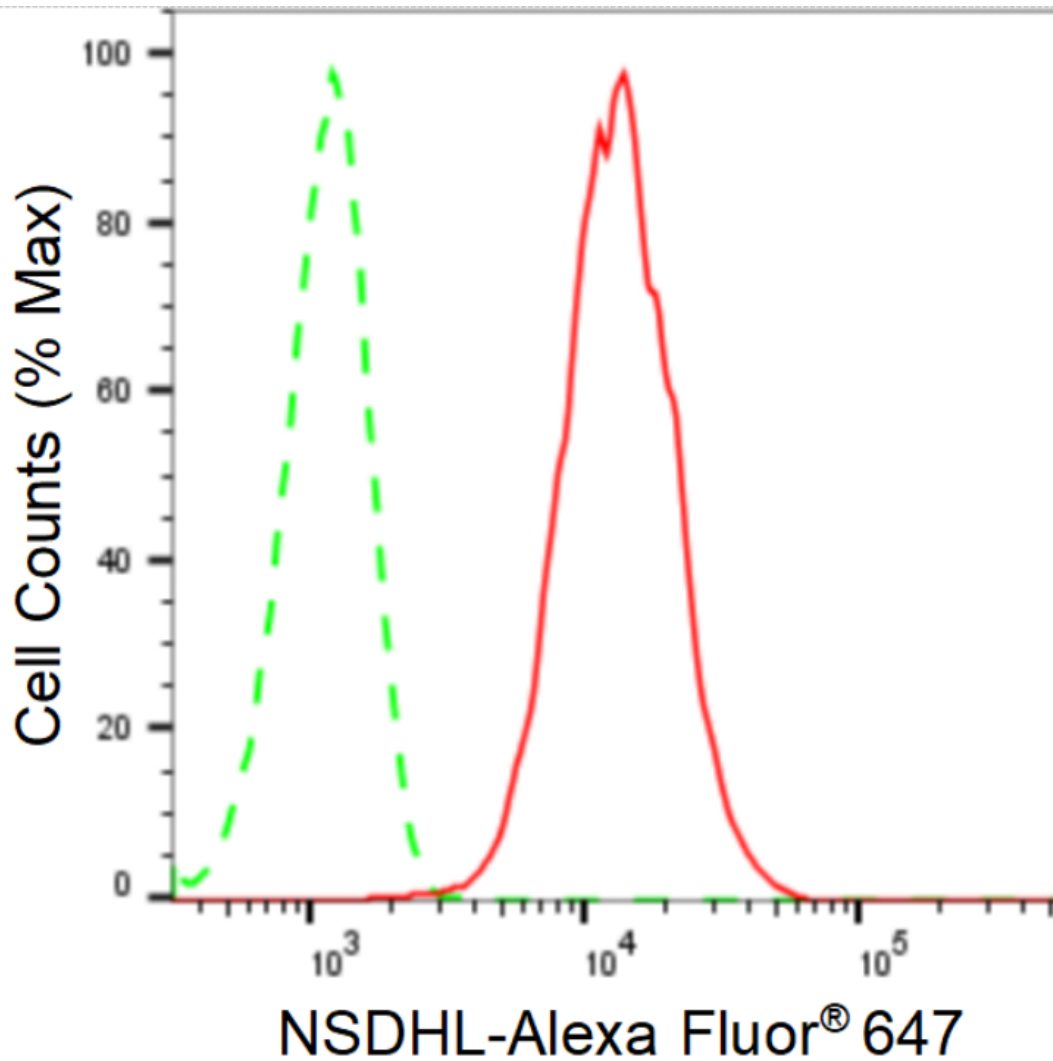
SALES@GENUINBIOTECH.COM  
FAX: +1-540-855-7041

[WWW.GENUINBIOTECH.COM](http://WWW.GENUINBIOTECH.COM)

# KD-Validated Anti-NSDHL Recombinant Rabbit Monoclonal Antibody

**Note:** This product is for research use only.

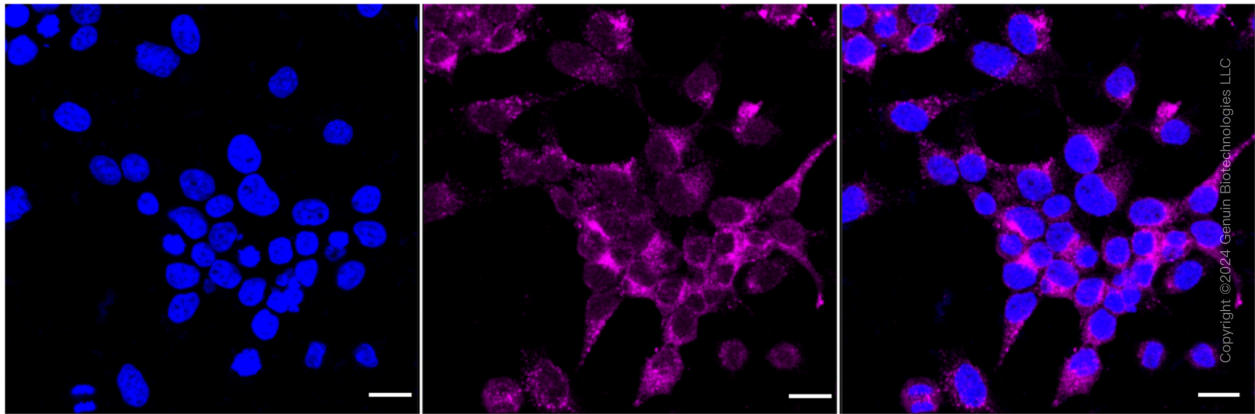
## Validation Data



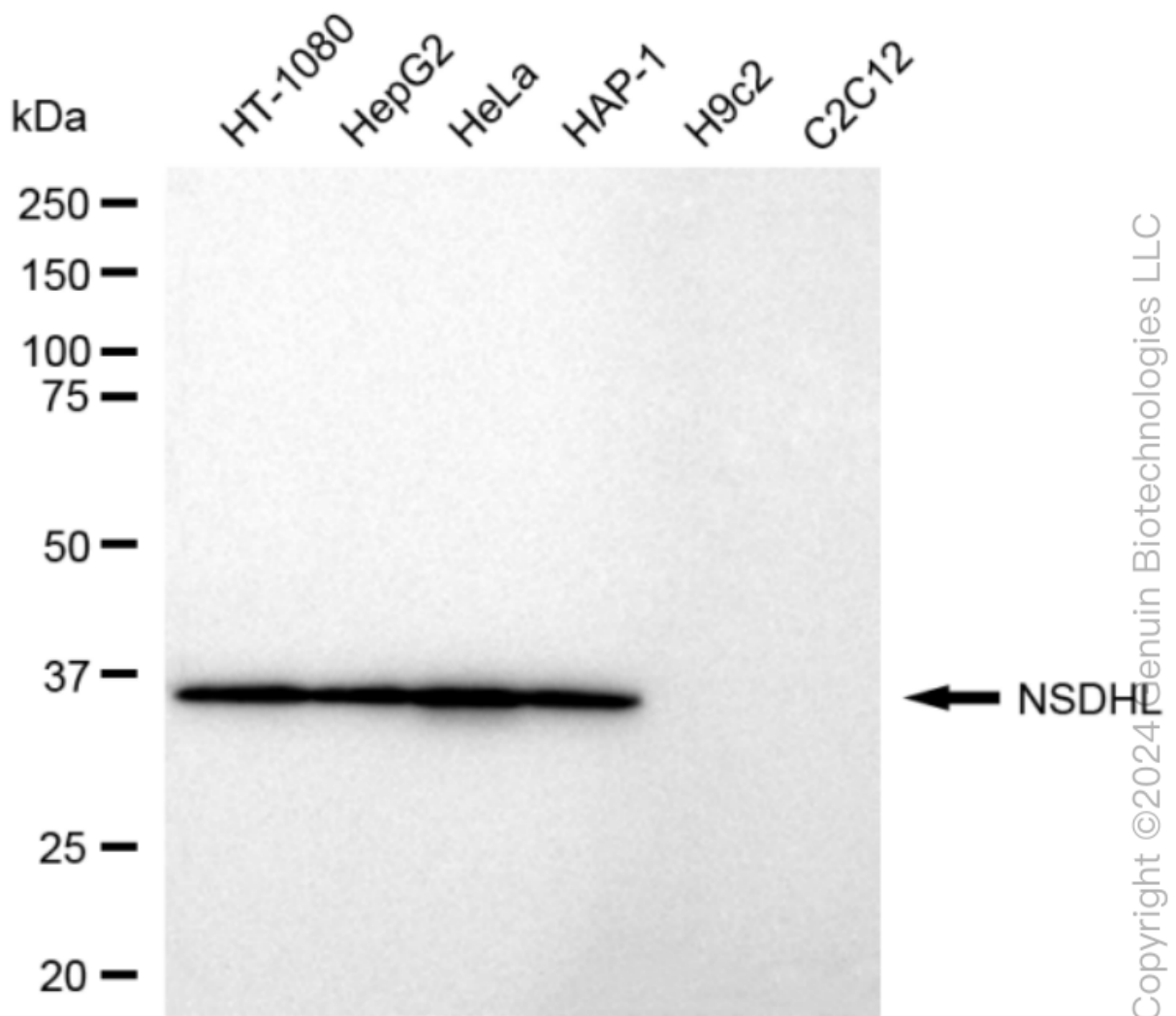
Copyright ©2024 Genuin Biotechnologies LLC

Flow cytometric analysis of NSDHL expression in HeLa cells using NSDHL antibody (Cat#62364, 1:2,000). Green, isotype control; red, NSDHL.

# KD-Validated Anti-NSDHL Recombinant Rabbit Monoclonal Antibody



Immunocytochemical staining of HeLa cells with anti-NSDHL antibody (Cat#62364, 1:1,000). Nuclei were stained blue with DAPI; NSDHL was stained magenta with Alexa Fluor® 647. Images were taken using Leica stellaris 5. Protein abundance based on laser Intensity and smart gain: Medium. Scale bar: 20 µm.



**SUPPORT**

SUPPORT@GENUINBIOTECH.COM  
TEL: +1-540-855-7041

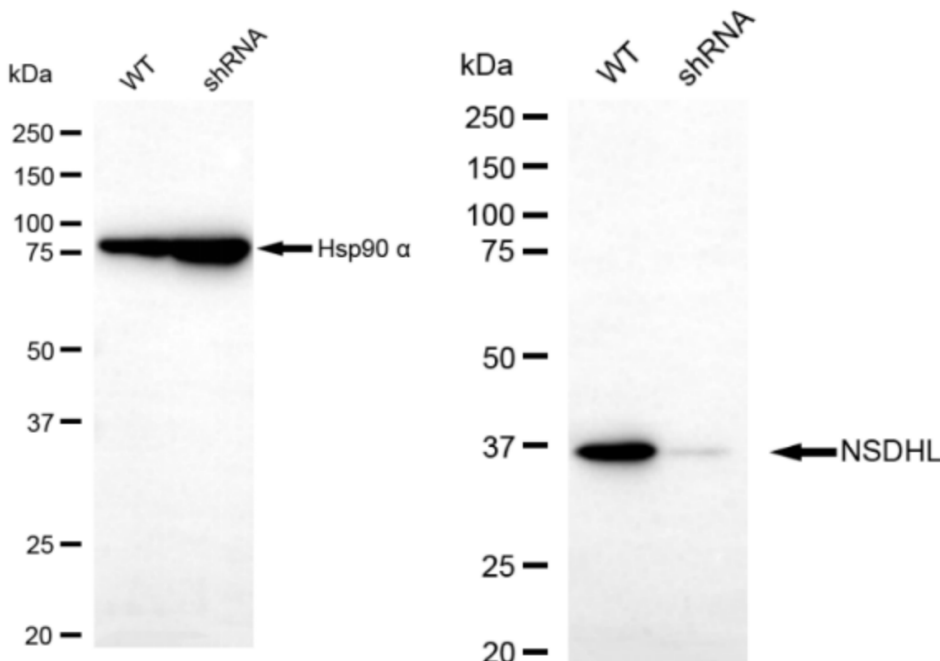
**ORDERS**

SALES@GENUINBIOTECH.COM  
FAX: +1-540-855-7041

[WWW.GENUINBIOTECH.COM](http://WWW.GENUINBIOTECH.COM)

## KD-Validated Anti-NSDHL Recombinant Rabbit Monoclonal Antibody

Western blotting analysis using anti-NSDHL antibody (Cat#62364). Total cell lysates (30  $\mu$ g) from various cell lines were loaded and separated by SDS-PAGE. The blot was incubated with anti-NSDHL antibody (Cat#62364, 1:5,000) and HRP-conjugated goat anti-rabbit secondary antibody (Cat#201, 1:20,000) respectively. Image was developed using FeQ™ ECL Substrate Kit (Cat#226).



Copyright ©2024 Genuin Biotechnologies LLC

Western blotting analysis using anti-NSDHL antibody (Cat#62364). NSDHL expression in wild type (WT) and NSDHL shRNA knockdown (KD) HeLa cells with 20  $\mu$ g of total cell lysates.  $\beta$ -Tubulin serves as a loading control. The blot was incubated with anti-NSDHL antibody (Cat#62364, 1:5,000) and HRP-conjugated goat anti-rabbit secondary antibody (Cat#201, 1:20,000) respectively. Image was developed using NaQ™ ECL Substrate Kit (Cat#716).

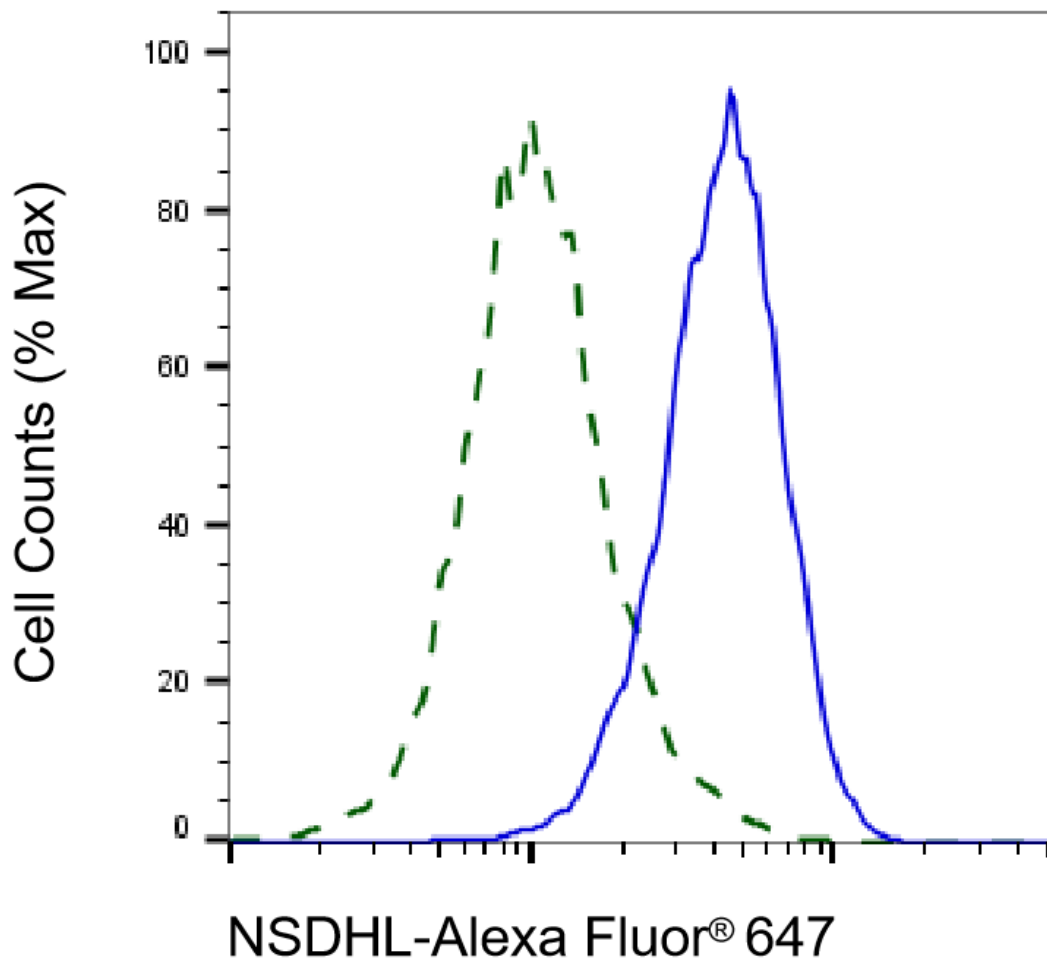
### SUPPORT

SUPPORT@GENUINBIOTECH.COM  
TEL: +1-540-855-7041

### ORDERS

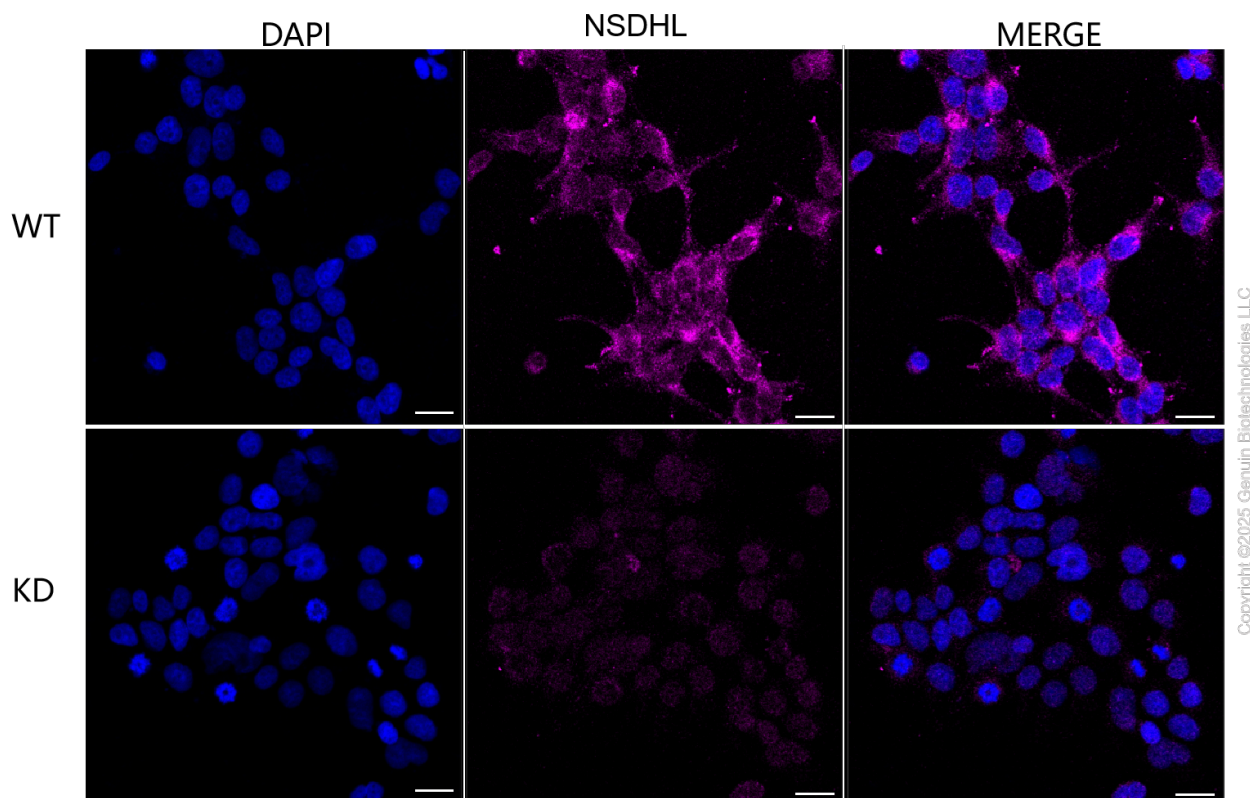
SALES@GENUINBIOTECH.COM  
FAX: +1-540-855-7041

WWW.GENUINBIOTECH.COM



Copyright ©2025 Genuin Biotechnologies LLC

Validation of NSDHL knockdown using flow cytometry. Wild-type(WT, Blue) and knockdown(KD, Green) HeLa cells were stained with anti-NSDHL antibody (Cat#62364, 1:2,000) and analyzed using BD flow cytometer.



Immunocytochemical staining of HeLa cells using anti-NSDHL antibody (Cat#62364, 1:1,000), Top panel: wild-type (WT); Bottom panel: NSDHL shRNA knockdown (KD). Nuclei were stained blue with DAPI; NSDHL was stained magenta with Alexa Fluor® 647. Scale bar, 20  $\mu$ m.