

KD-Validated Anti-Matrin 3 Recombinant Rabbit Monoclonal Antibody



Catalog #: 62374

Aliases

Matrin 3; KIAA0723; VCPDM; Matrin-3; MGC9105; MPD2; Vocal Cord And Pharyngeal Weakness With Distal Myopathy; Myopathy, Distal 2; ALS21

Background

Gene Name: MATR3

NCBI Gene Entry: [9782](#)

UniProt Entry: [P43243](#)

Application Information

Molecular Weight: Predicted, 95 kDa, observed, 125 kDa

Clonality: Rabbit monoclonal antibody

Clone ID: 24GB535

Species Reactivity: Human, mouse, rat

Applications Tested: Western blotting (WB), flow cytometry (FCM), immunocytochemistry (IC)

Immunogen

A synthesized peptide derived from human Matrin 3

Isotype

Rabbit IgG

Storage Buffer

Supplied in PBS (pH 7.4) containing 50% glycerol, and 0.02% sodium azide.

Storage

Store at -20 °C for one year.

Recommended Dilutions

Western Blotting (WB): 1:1,000-1:5,000

Flow Cytometry (FCM): 1:2,000

Immunocytochemistry (IC): 1:100-1:1,000

Note: This product is for research use only.

Validation Data

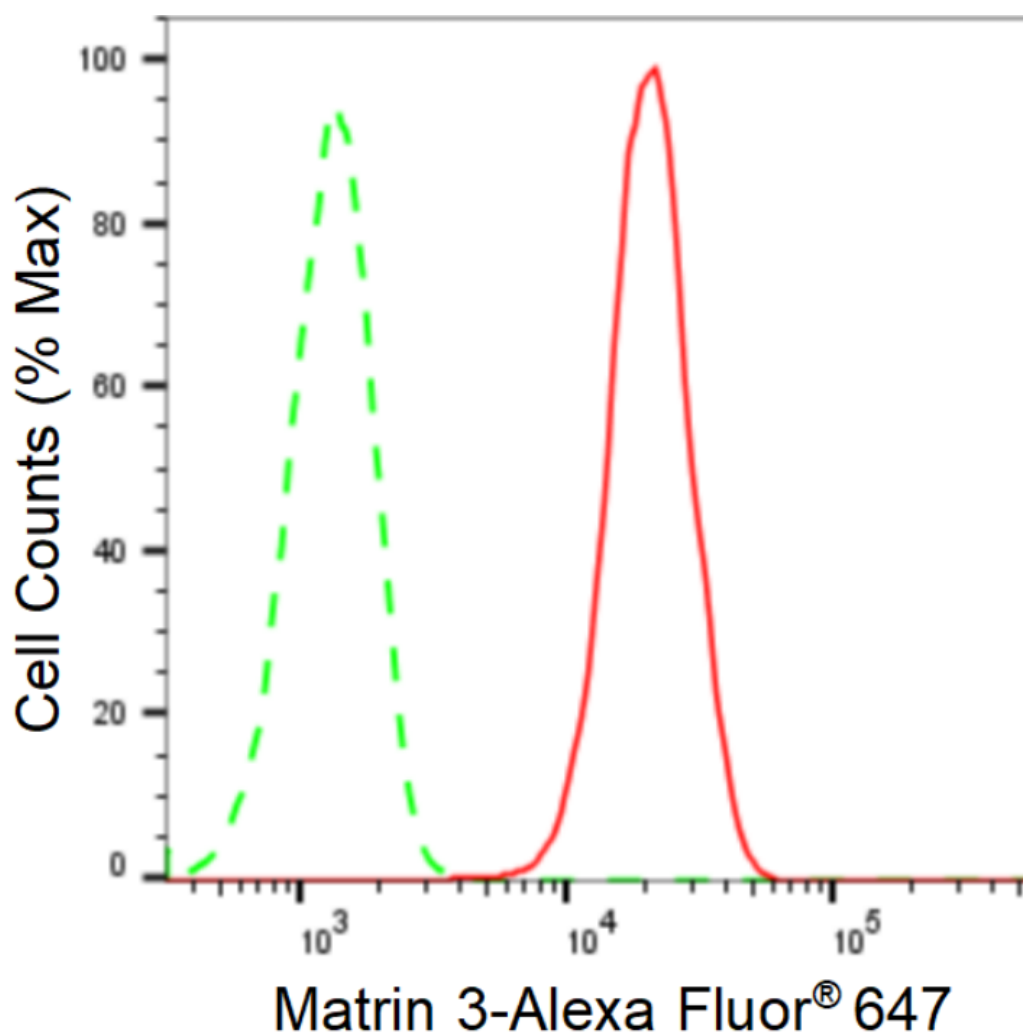
SUPPORT

SUPPORT@GENUINBIOTECH.COM
TEL: +1-540-855-7041

ORDERS

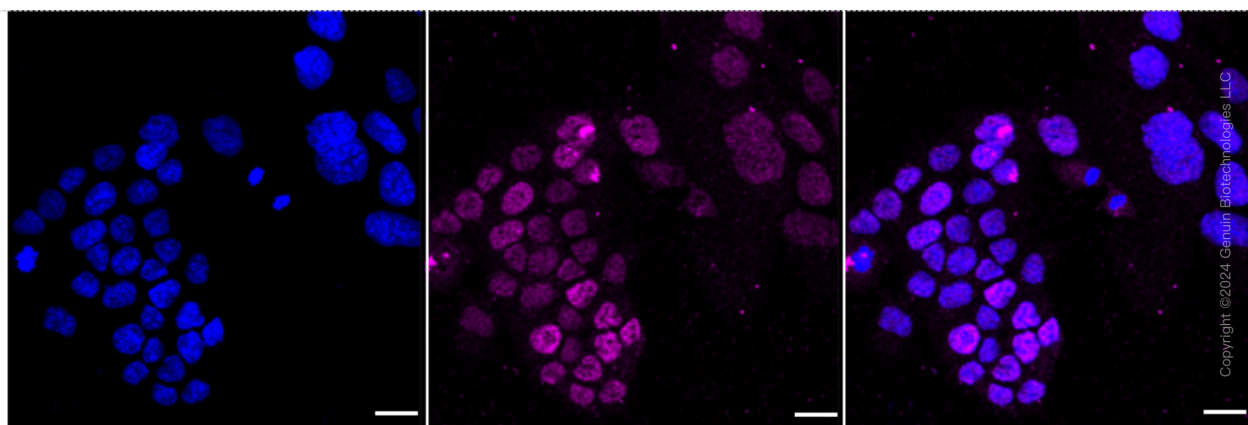
SALES@GENUINBIOTECH.COM
FAX: +1-540-855-7041

WWW.GENUINBIOTECH.COM



Copyright ©2024 Genuin Biotechnologies LLC

Flow cytometric analysis of Matrin 3 expression in HAP-1 cells using anti-Matrin 3 antibody (Cat#62374, 1:2,000). Green, isotype control; red, Matrin 3.



Immunocytochemical staining of HAP-1 cells with anti-Matrin 3 antibody (Cat#62374, 1:1,000). Nuclei were stained blue with DAPI; Matrin 3 was stained magenta with Alexa Fluor® 647.

SUPPORT

SUPPORT@GENUINBIOTECH.COM
TEL: +1-540-855-7041

ORDERS

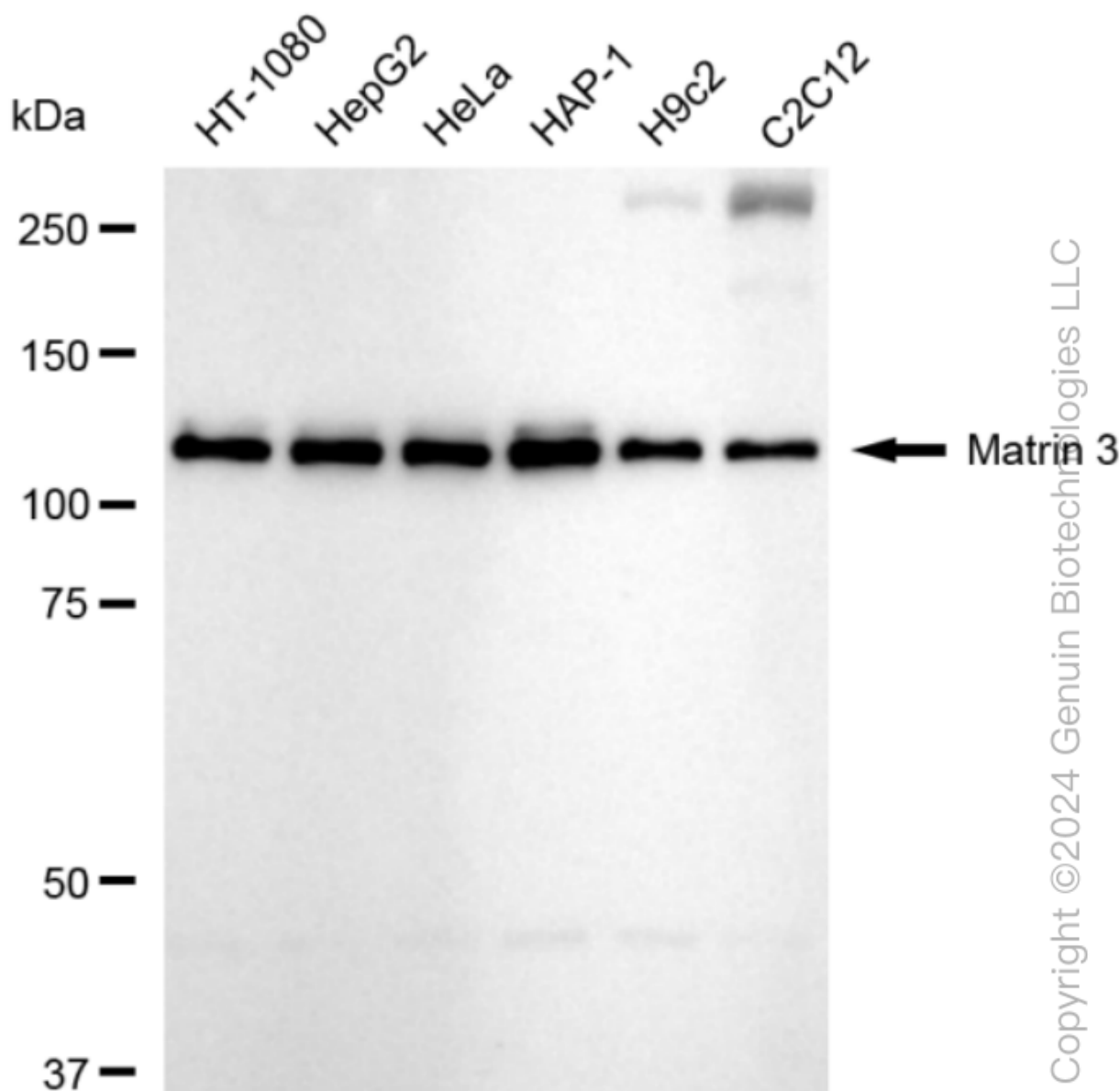
SALES@GENUINBIOTECH.COM
FAX: +1-540-855-7041

WWW.GENUINBIOTECH.COM

KD-Validated Anti-Matrin 3 Recombinant Rabbit Monoclonal Antibody

PAGE 3

Images were taken using Leica stellaris 5. Protein abundance based on laser Intensity and smart gain: Medium. Scale bar: 20 μ m.



Western blotting analysis using anti-Matrin 3 antibody (Cat#62374). Total cell lysates (30 μ g) from various cell lines were loaded and separated by SDS-PAGE. The blot was incubated with anti-Matrin 3 antibody (Cat#62374, 1:5,000) and HRP-conjugated goat anti-rabbit secondary antibody (Cat#201, 1:20,000) respectively. Image was developed using FeQ™ ECL Substrate Kit (Cat#226).

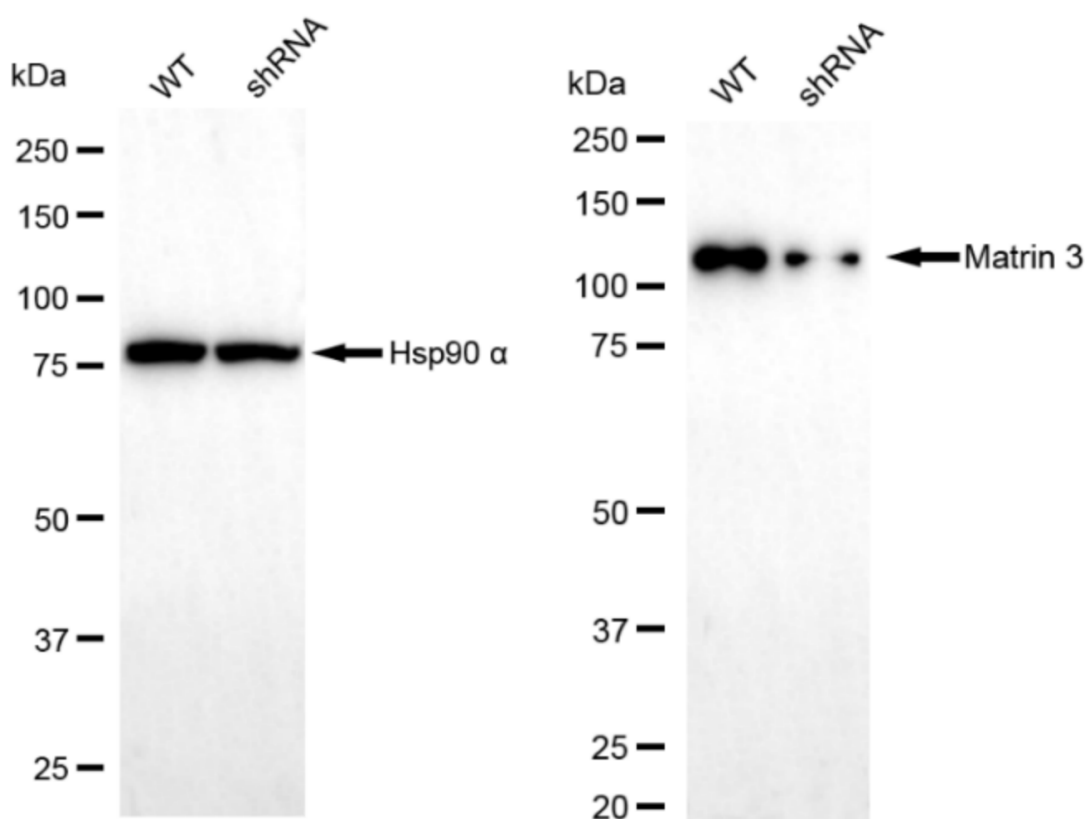
SUPPORT

SUPPORT@GENUINBIOTECH.COM
TEL: +1-540-855-7041

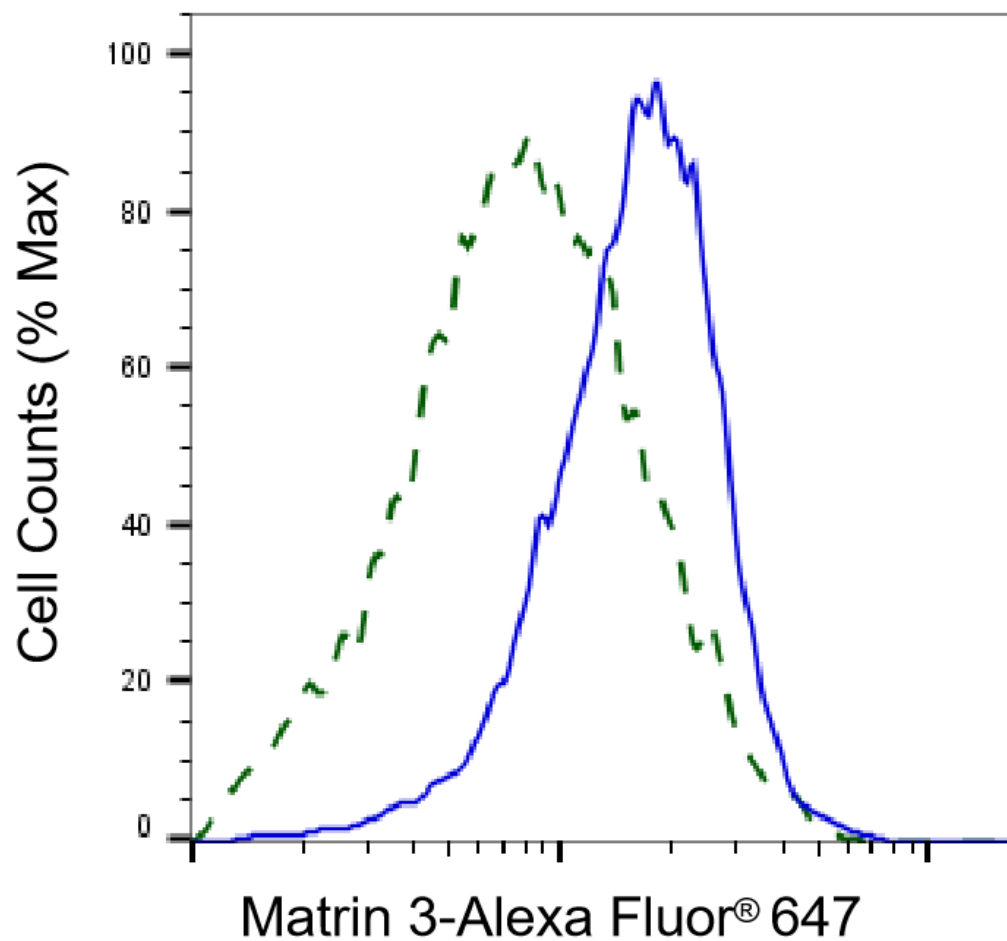
ORDERS

SALES@GENUINBIOTECH.COM
FAX: +1-540-855-7041

WWW.GENUINBIOTECH.COM



Western blotting analysis using anti-Matrin 3 antibody (Cat#62374). Matrin 3 expression in wild type (WT) and Matrin 3 shRNA knockdown (KD) HeLa cells with 20 μ g of total cell lysates. β -Tubulin serves as a loading control. The blot was incubated with anti-Matrin 3 antibody (Cat#62374, 1:5,000) and HRP-conjugated goat anti-rabbit secondary antibody (Cat#201, 1:20,000) respectively. Image was developed using NaQ™ ECL Substrate Kit (Cat#716).



Validation of Matrin 3 knockdown using flow cytometry. Wild-type(WT, Blue) and knockdown(KD, Green) HeLa cells were stained with anti-Matrin 3 antibody (Cat#62374, 1:2,000) and analyzed using BD flow cytometer.