

KD-Validated Anti-Mov10 RNA Helicase Recombinant Rabbit Monoclonal Antibody



Catalog #: 62382

Aliases

Mov10 RNA Helicase; Mov10 RISC Complex RNA Helicase; FSAP113; Gb110; Functional Spliceosome-Associated Protein 113; Moloney Leukemia Virus 10 Protein; Armitage Homolog; Helicase MOV-10; MGC2948; Mov10, Moloney Leukemia Virus 10, Homolog (Mouse); Mov10 (Moloney Leukemia Virus 10, Mouse) Homolog; Mov10, Moloney Leukemia Virus 10, Homolog; Putative Helicase MOV-10; EC 3.6.4.13; KIAA1631; EC 3.6.1

Background

Gene Name: MOV10

NCBI Gene Entry: [4343](#)

UniProt Entry: [Q9HCE1](#)

Application Information

Molecular Weight: Predicted, 114 kDa, observed, 114 kDa

Clonality: Rabbit monoclonal antibody

Clone ID: 24GB575

Species Reactivity: Human, mouse, rat

Applications Tested: Western blotting (WB), flow cytometry (FCM), immunocytochemistry (IC)

Immunogen

A synthesized peptide derived from human Mov10

Isotype

Rabbit IgG

Storage Buffer

Supplied in PBS (pH 7.4) containing 50% glycerol, and 0.02% sodium azide.

Storage

Store at -20 °C for one year.

Recommended Dilutions

Western Blotting (WB): 1:1,000-1:5,000

Flow Cytometry (FCM): 1:2,000

Immunocytochemistry (IC): 1:100-1:1,000

SUPPORT

SUPPORT@GENUINBIOTECH.COM
TEL: +1-540-855-7041

ORDERS

SALES@GENUINBIOTECH.COM
FAX: +1-540-855-7041

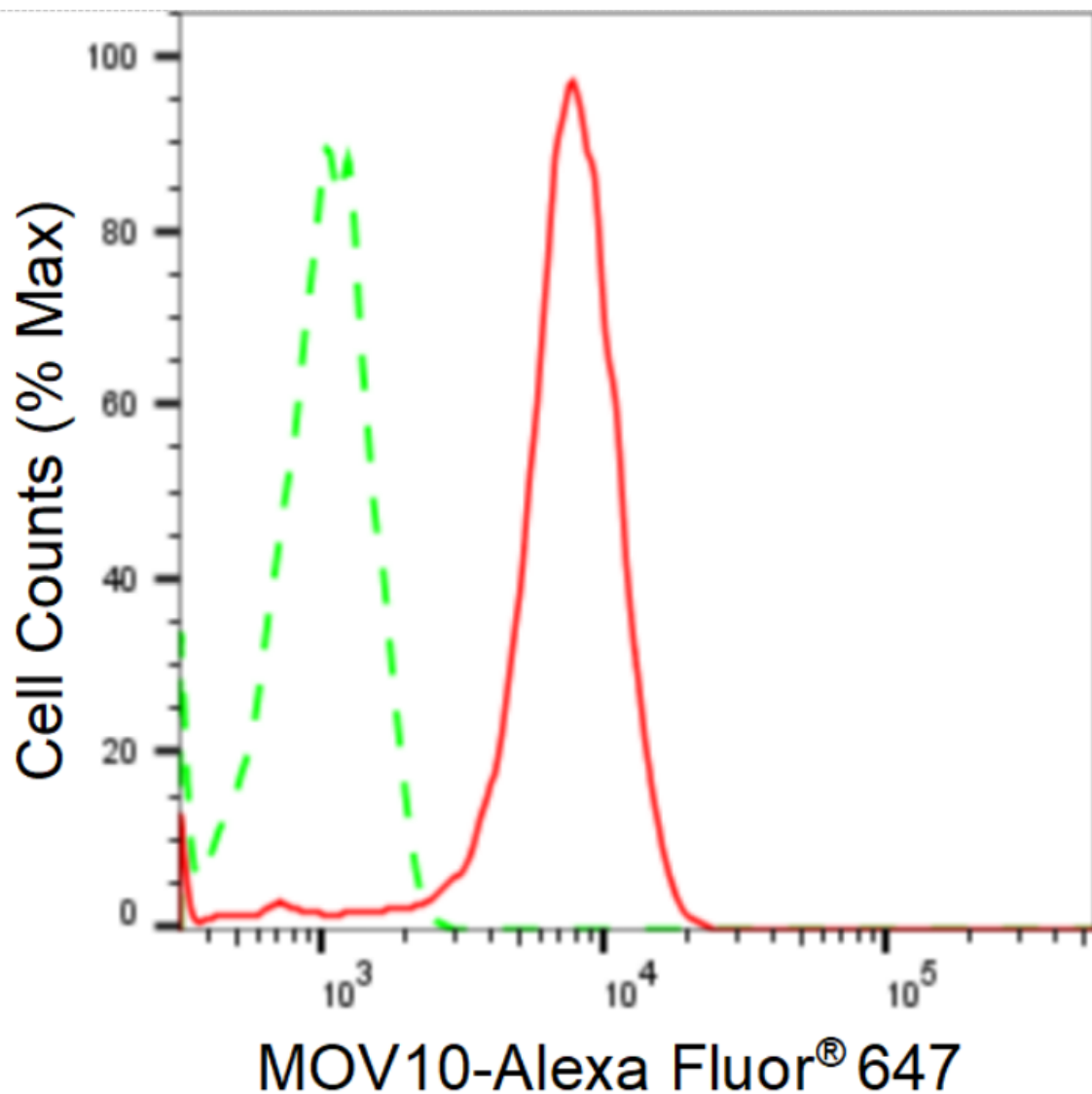
WWW.GENUINBIOTECH.COM

KD-Validated Anti-Mov10 RNA Helicase Recombinant Rabbit Monoclonal Antibody

PAGE 2

Note: This product is for research use only.

Validation Data



Copyright ©2024 Genuin Biotechnologies LLC

Flow cytometric analysis of MOV10 expression in HeLa cells using anti-MOV10 antibody (Cat#62382, 1:2,000). Green, isotype control; red, MOV10.

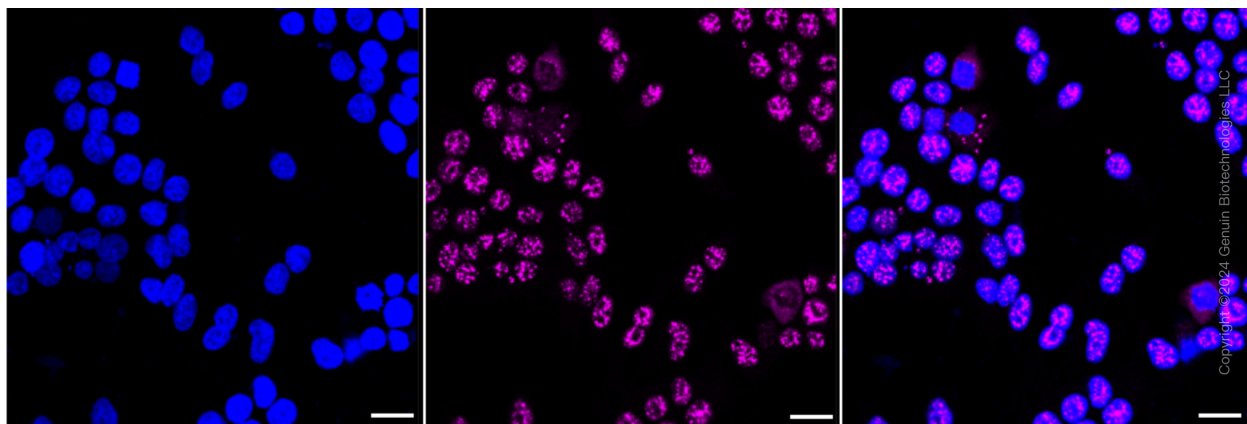
SUPPORT

SUPPORT@GENUINBIOTECH.COM
TEL: +1-540-855-7041

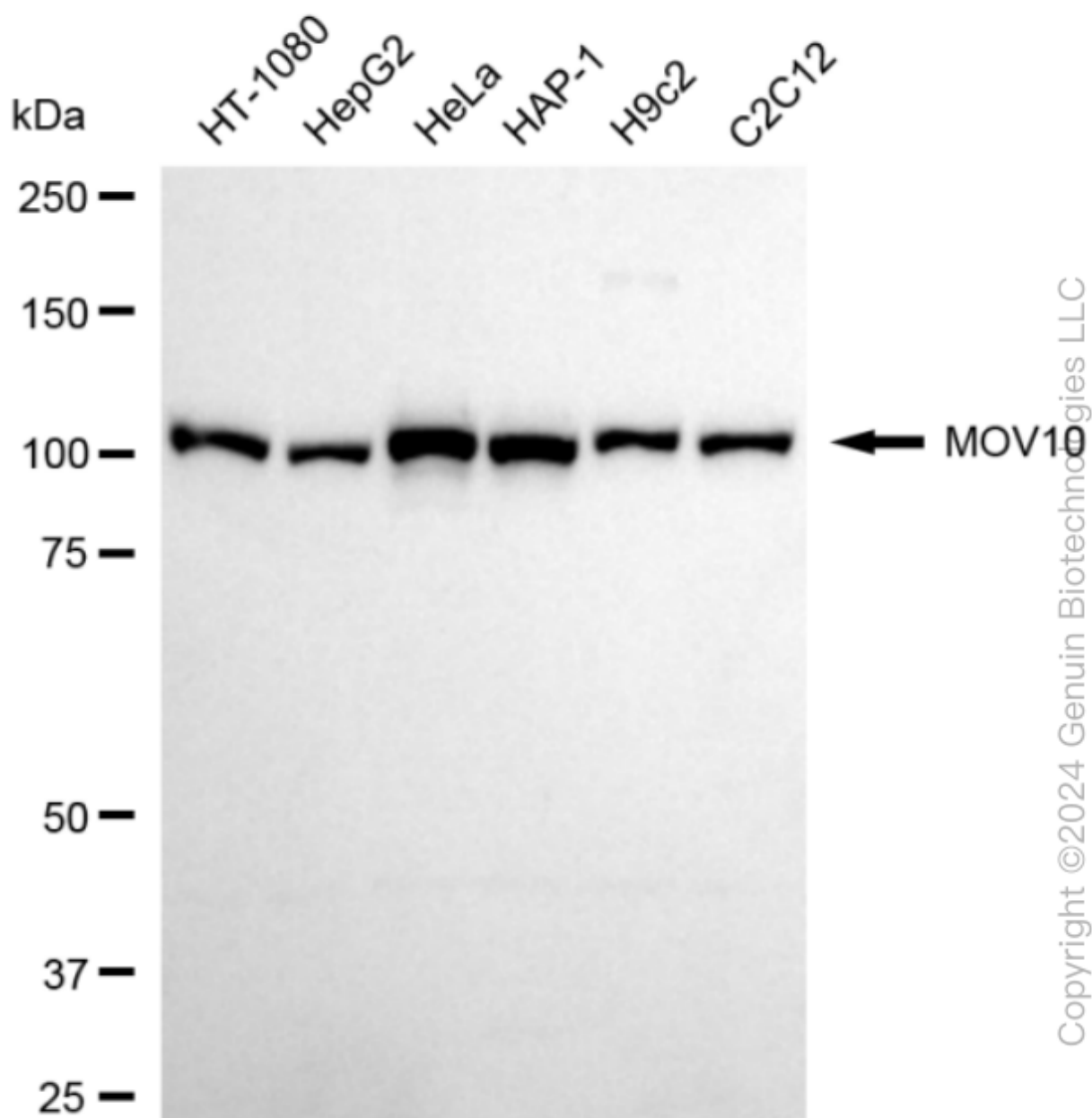
ORDERS

SALES@GENUINBIOTECH.COM
FAX: +1-540-855-7041

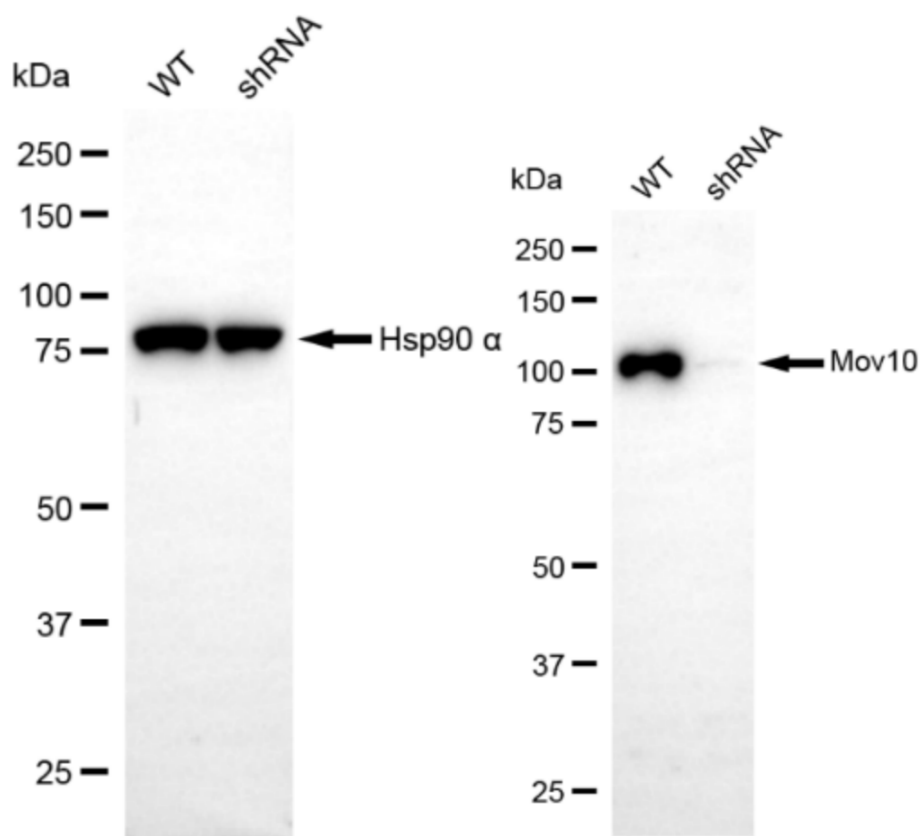
WWW.GENUINBIOTECH.COM



Immunocytochemical staining of HeLa cells with anti-MOV10 antibody (Cat#62382, 1:1,000). Nuclei were stained blue with DAPI; MOV10 was stained magenta with Alexa Fluor® 647. Images were taken using Leica stellaris 5. Protein abundance based on laser Intensity and smart gain: High. Scale bar: 20 μ m.



Western blotting analysis using anti-MOV10 antibody (Cat#62382). Total cell lysates (30 µg) from various cell lines were loaded and separated by SDS-PAGE. The blot was incubated with anti-MOV10 antibody (Cat#62382, 1:5,000) and HRP-conjugated goat anti-rabbit secondary antibody (Cat#201, 1:20,000) respectively. Image was developed using FeQ™ ECL Substrate Kit (Cat#226).



Copyright ©2024 Genuin Biotechnologies LLC

Western blotting analysis using anti-Mov10 antibody (Cat#62382). Mov10 expression in wild type (WT) and Mov10 shRNA knockdown (KD) HeLa cells with 20 µg of total cell lysates. Hsp90 α serves as a loading control. The blot was incubated with anti-Mov10 antibody (Cat#62382, 1:5,000) and HRP-conjugated goat anti-rabbit secondary antibody (Cat#201, 1:20,000) respectively. Image was developed using NaQ™ ECL Substrate Kit (Cat#716).