

# KD-Validated Anti-Proliferation-Associated 2G4 Recombinant Rabbit Monoclonal Antibody



**Catalog #: 62383**

## Aliases

Proliferation-Associated 2G4; EBP1; IRES-Specific Cellular Transacting Factor 45; Proliferation-Associated Protein 2G4; Proliferation-Associated 2G4, 38kDa; Proliferation-Associated 2G4, 38kD; Cell Cycle Protein P38-2G4 Homolog; ErbB-3 Receptor Binding Protein; ErbB3-Binding Protein 1; ITAF45; HG4-1; ErbB3-Binding Protein Ebp1; ErbB-3 Binding Protein 1; P38-2G4

## Background

Gene Name: PA2G4

NCBI Gene Entry: [5036](#)

UniProt Entry: [Q9UQ80](#)

## Application Information

Molecular Weight: Predicted, 44 kDa, observed, 42 kDa

Clonality: Rabbit monoclonal antibody

Clone ID: 24GB580

Species Reactivity: Human, mouse, rat

Applications Tested: Western blotting (WB), flow cytometry (FCM), immunocytochemistry (IC)

## Immunogen

A synthesized peptide derived from human EBP1 / PA2G4

## Isotype

Rabbit IgG

## Storage Buffer

Supplied in PBS (pH 7.4) containing 50% glycerol, and 0.02% sodium azide.

## Storage

Store at -20 °C for one year.

## Recommended Dilutions

Western Blotting (WB): 1:1,000-1:5,000

Flow Cytometry (FCM): 1:2,000

Immunocytochemistry (IC): 1:100-1:1,000

---

### SUPPORT

SUPPORT@GENUINBIOTECH.COM  
TEL: +1-540-855-7041

### ORDERS

SALES@GENUINBIOTECH.COM  
FAX: +1-540-855-7041

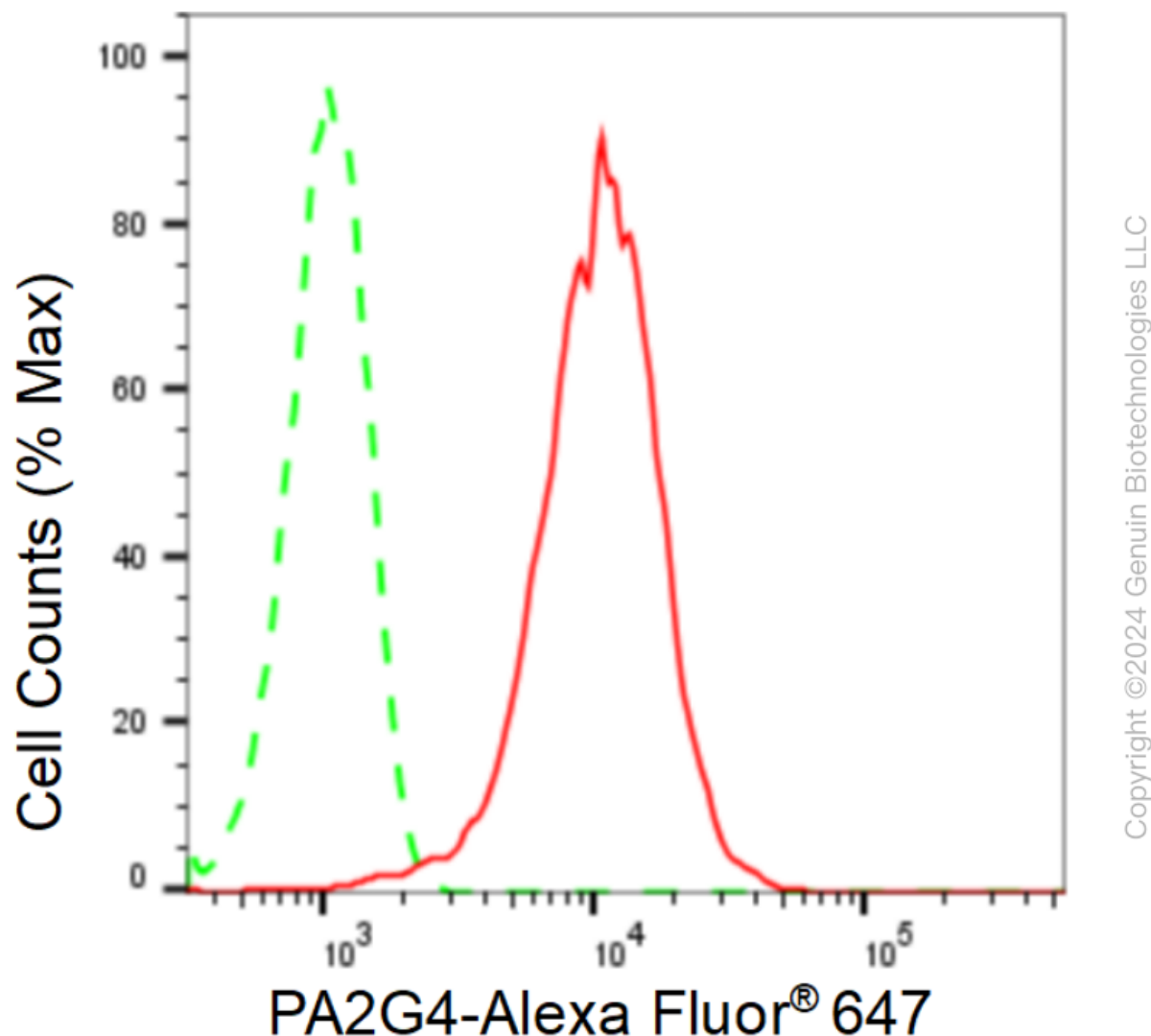
[WWW.GENUINBIOTECH.COM](http://WWW.GENUINBIOTECH.COM)

## KD-Validated Anti-Proliferation-Associated 2G4 Recombinant Rabbit Monoclonal Antibody

PAGE 2

**Note:** This product is for research use only.

### Validation Data



Flow cytometric analysis of PA2G4 expression in HepG2 cells using PA2G4 antibody (Cat#62383, 1:2,000). Green, isotype control; red, PA2G4.

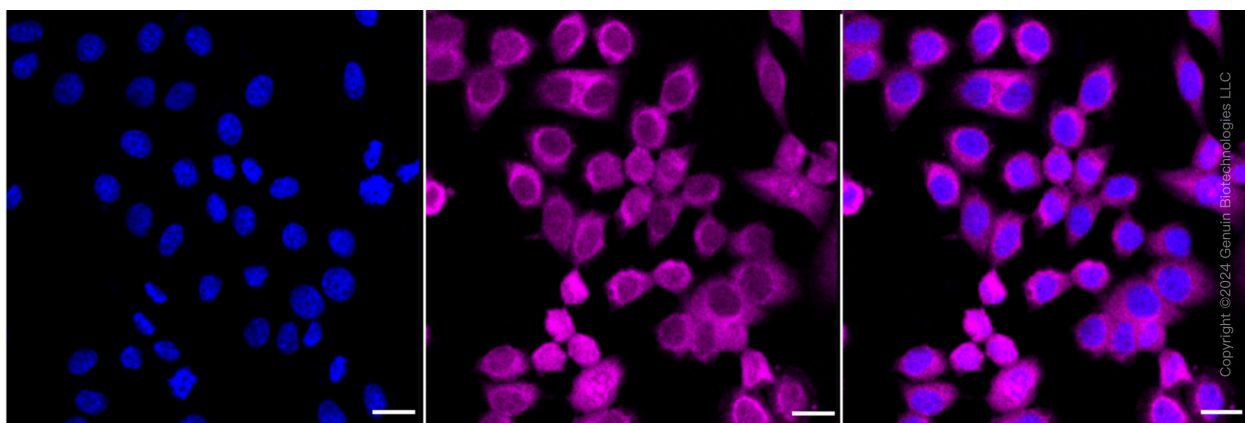
#### SUPPORT

SUPPORT@GENUINBIOTECH.COM  
TEL: +1-540-855-7041

#### ORDERS

SALES@GENUINBIOTECH.COM  
FAX: +1-540-855-7041

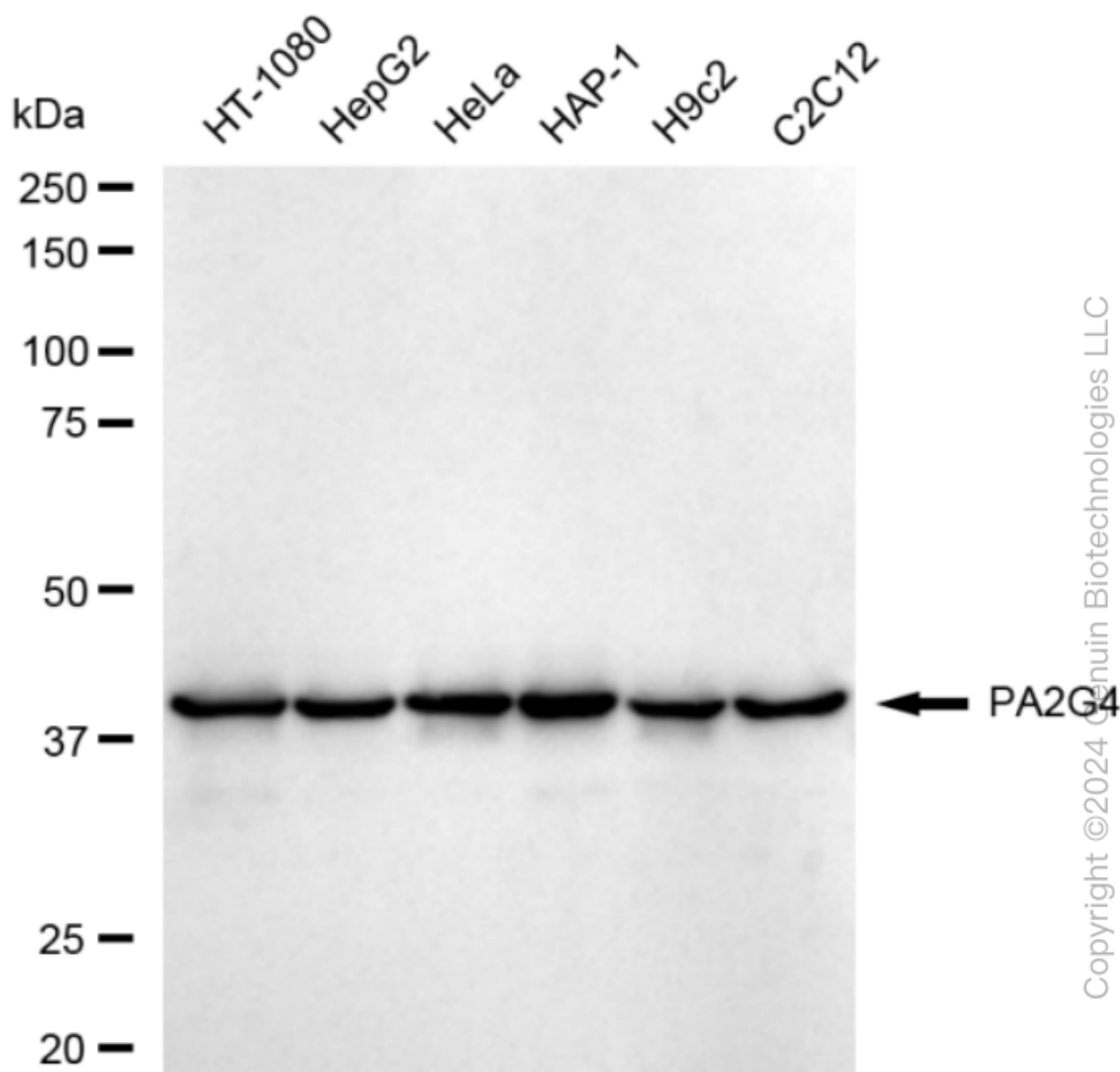
[WWW.GENUINBIOTECH.COM](http://WWW.GENUINBIOTECH.COM)



Immunocytochemical staining of HepG2 cells with anti-PA2G4 antibody (Cat#62383, 1:1,000). Nuclei were stained blue with DAPI; PA2G4 was stained magenta with Alexa Fluor® 647. Images were taken using Leica stellaris 5. Protein abundance based on laser Intensity and smart gain: Medium. Scale bar: 20  $\mu$ m.

## KD-Validated Anti-Proliferation-Associated 2G4 Recombinant Rabbit Monoclonal Antibody

PAGE 4



Western blotting analysis using anti-PA2G4 antibody (Cat#62383). Total cell lysates (30  $\mu$ g) from various cell lines were loaded and separated by SDS-PAGE. The blot was incubated with anti-PA2G4 antibody (Cat#62383, 1:5,000) and HRP-conjugated goat anti-rabbit secondary antibody (Cat#201, 1:20,000) respectively. Image was developed using FeQ™ ECL Substrate Kit (Cat#226).

### SUPPORT

SUPPORT@GENUINBIOTECH.COM  
TEL: +1-540-855-7041

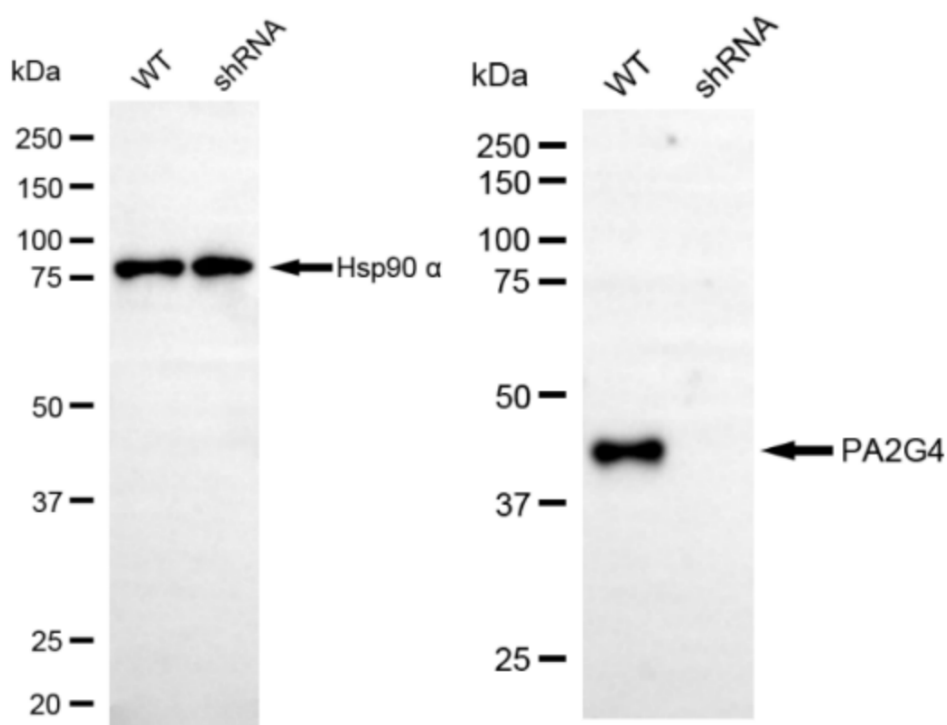
### ORDERS

SALES@GENUINBIOTECH.COM  
FAX: +1-540-855-7041

[WWW.GENUINBIOTECH.COM](http://WWW.GENUINBIOTECH.COM)

## KD-Validated Anti-Proliferation-Associated 2G4 Recombinant Rabbit Monoclonal Antibody

PAGE 5



Copyright ©2024 Genuin Biotechnologies LLC

Western blotting analysis using anti-PA2G4 antibody (Cat#62383). PA2G4 expression in wild type (WT) and PA2G4 shRNA knockdown (KD) HeLa cells with 20 µg of total cell lysates. Hsp90 α serves as a loading control. The blot was incubated with anti-PA2G4 antibody (Cat#62383, 1:5,000) and HRP-conjugated goat anti-rabbit secondary antibody (Cat#201, 1:20,000) respectively. Image was developed using NaQ™ ECL Substrate Kit (Cat#716).

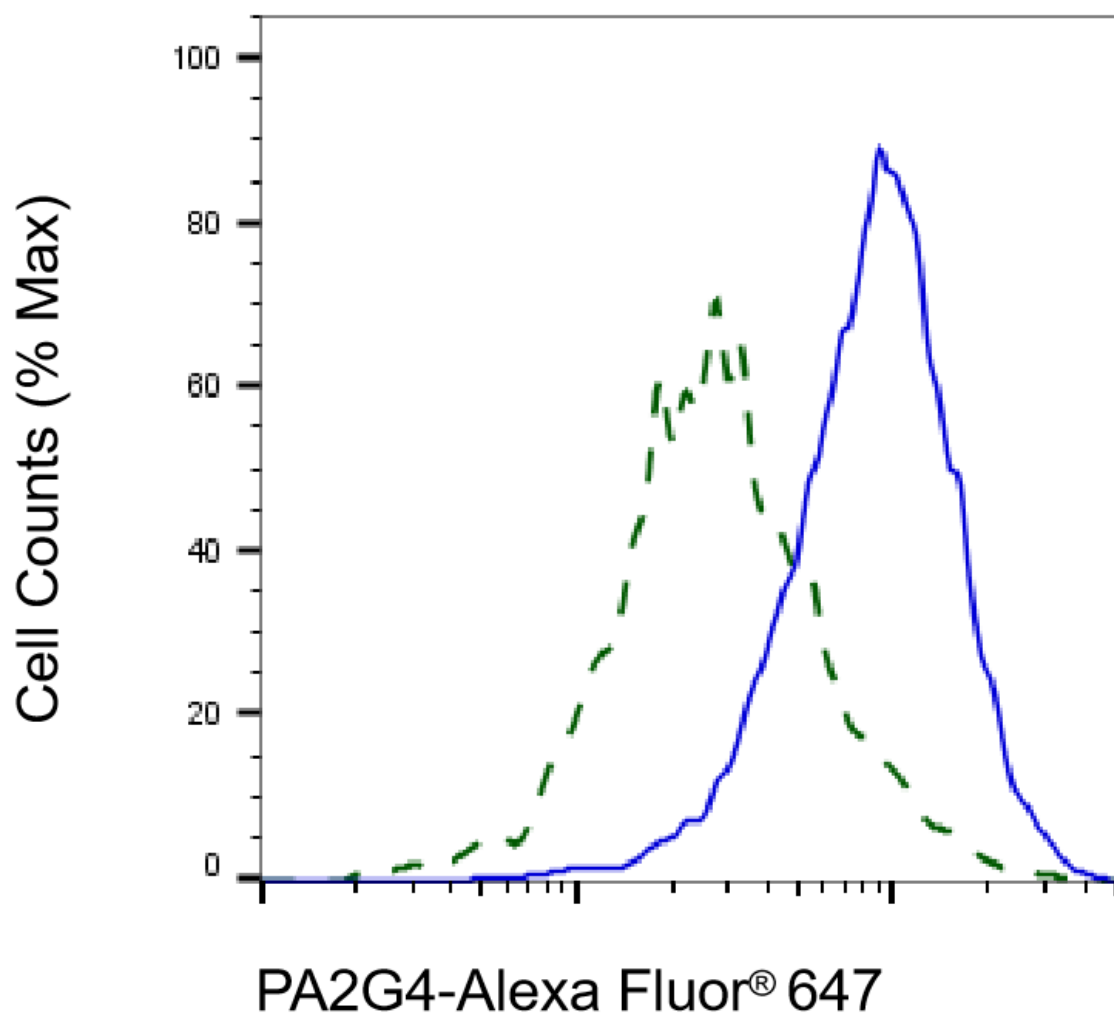
### SUPPORT

SUPPORT@GENUINBIOTECH.COM  
TEL: +1-540-855-7041

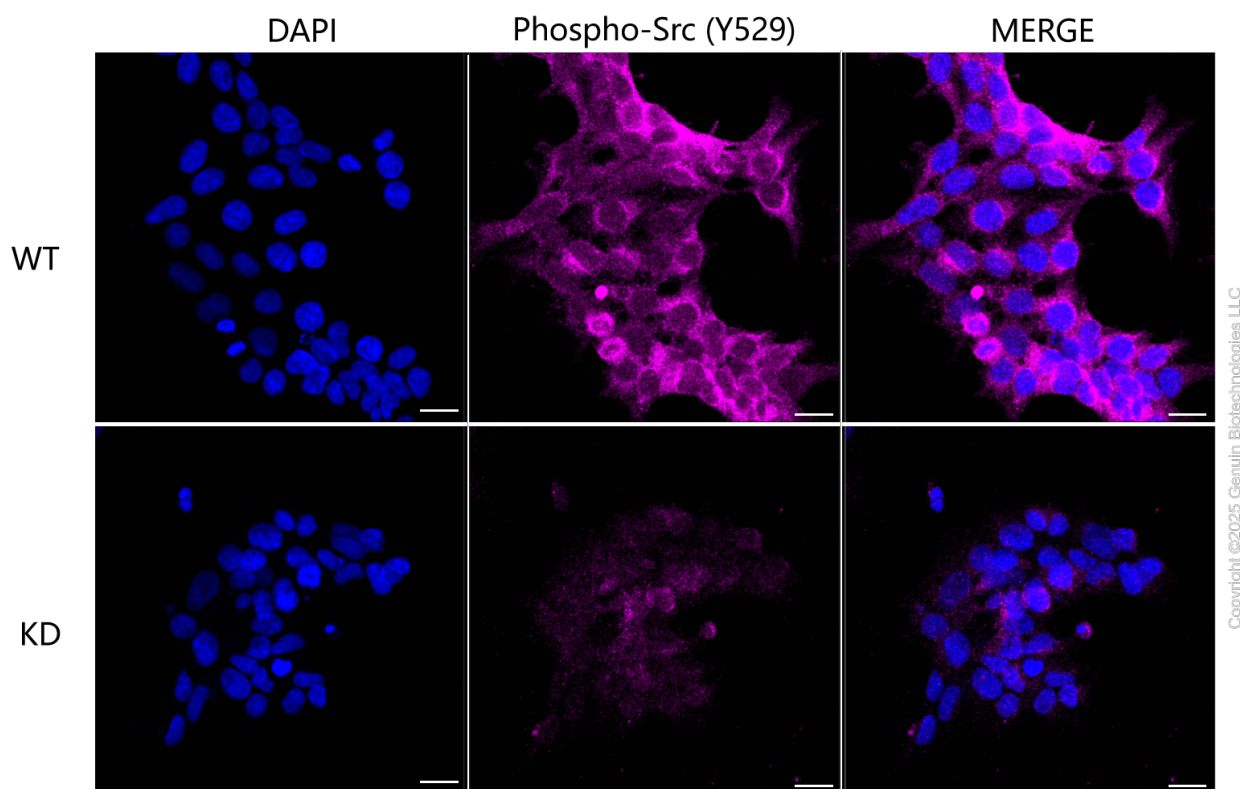
### ORDERS

SALES@GENUINBIOTECH.COM  
FAX: +1-540-855-7041

[WWW.GENUINBIOTECH.COM](http://WWW.GENUINBIOTECH.COM)



Validation of PA2G4 knockdown using flow cytometry. Wild-type(WT, Blue) and knockdown(KD, Green) HeLa cells were stained with anti-PA2G4 antibody (Cat#62383, 1:2,000) and analyzed using BD flow cytometer.



Immunocytochemical staining of HeLa cells using anti-Phospho-Src (Y529) antibody (Cat#62383, 1:1,000), Top panel: wild-type (WT); Bottom panel: Phospho-Src (Y529) shRNA knockdown (KD). Nuclei were stained blue with DAPI; Phospho-Src (Y529) was stained magenta with Alexa Fluor® 647. Scale bar, 20  $\mu$ m.