

# KD-Validated Anti-Nemo Like Kinase Recombinant Rabbit Monoclonal Antibody



**Catalog #: 62384**

## Aliases

Nemo Like Kinase; Serine/Threonine-Protein Kinase NLK; Nemo-Like Kinase; EC 2.7.11.24; Protein LAK1; EC 2.7.11; LAK1

## Background

Gene Name: NLK

NCBI Gene Entry: [51701](#)

UniProt Entry: [Q9UBE8](#)

## Application Information

Molecular Weight: Predicted, 58 kDa, observed, 58 kDa

Clonality: Rabbit monoclonal antibody

Clone ID: 24GB585

Species Reactivity: Human

Applications Tested: Western blotting (WB), flow cytometry (FCM), immunocytochemistry (IC)

## Immunogen

A synthesized peptide derived from human NLK

## Isotype

Rabbit IgG

## Storage Buffer

Supplied in PBS (pH 7.4) containing 50% glycerol, and 0.02% sodium azide.

## Storage

Store at -20 °C for one year.

## Recommended Dilutions

Western Blotting (WB): 1:1,000-1:5,000

Flow Cytometry (FCM): 1:2,000

Immunocytochemistry (IC): 1:100-1:1,000

**Note:** This product is for research use only.

## Validation Data

---

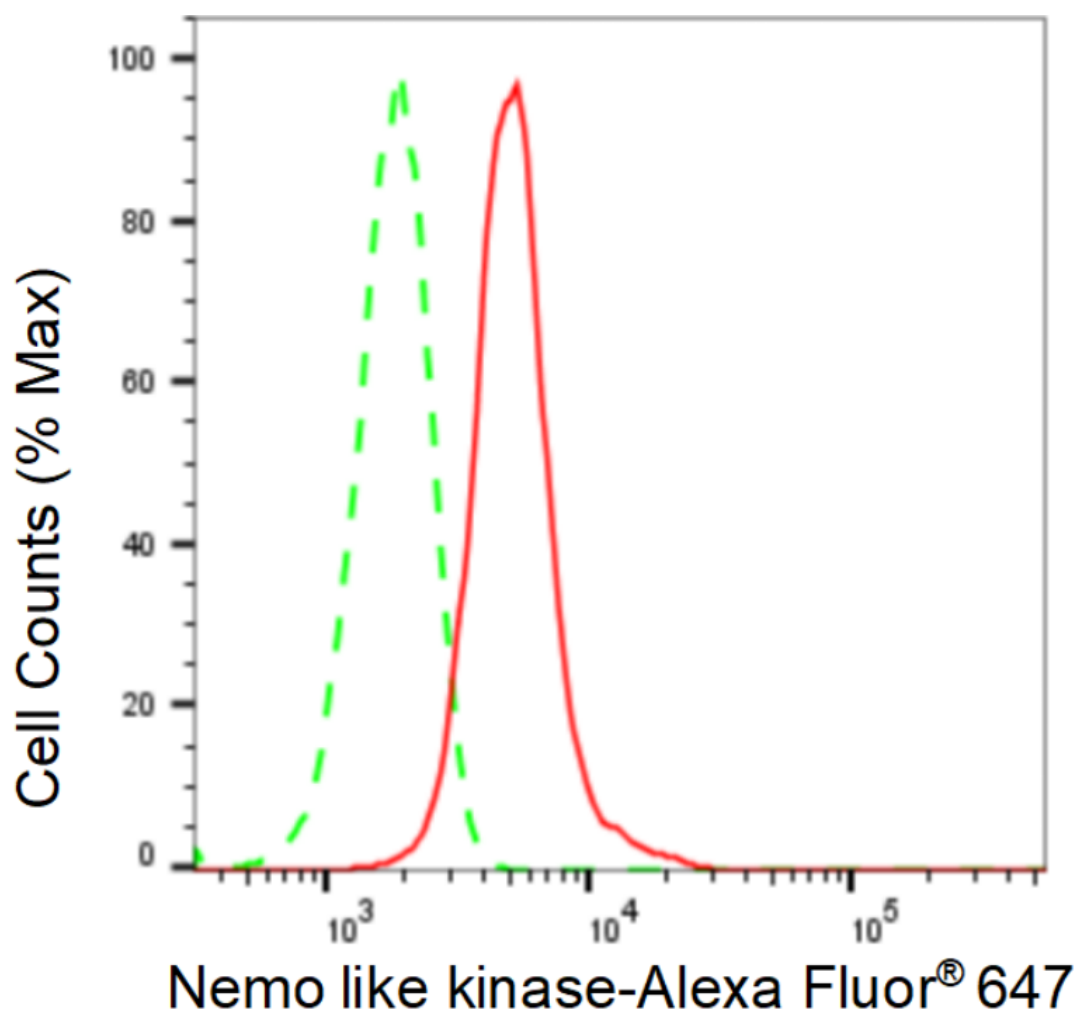
### SUPPORT

SUPPORT@GENUINBIOTECH.COM  
TEL: +1-540-855-7041

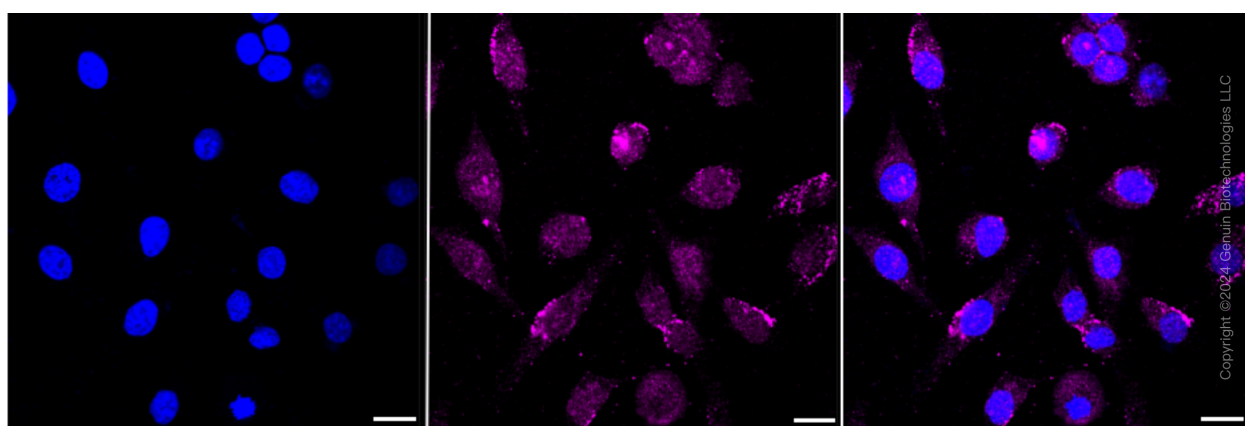
### ORDERS

SALES@GENUINBIOTECH.COM  
FAX: +1-540-855-7041

[WWW.GENUINBIOTECH.COM](http://WWW.GENUINBIOTECH.COM)



Flow cytometric analysis of Nemo like kinase expression in HeLa cells using Nemo like kinase antibody (Cat#62384, 1:2,000). Green, isotype control; red, Nemo like kinase.



Immunocytochemical staining of HeLa cells with anti-Nemo like kinase antibody (Cat#62384, 1:1,000). Nuclei were stained blue with DAPI; Nemo like kinase was stained magenta with Alexa Fluor® 647. Images were taken using Leica stellaris 5. Protein abundance based on laser Intensity

**SUPPORT**

SUPPORT@GENUINBIOTECH.COM  
TEL: +1-540-855-7041

**ORDERS**

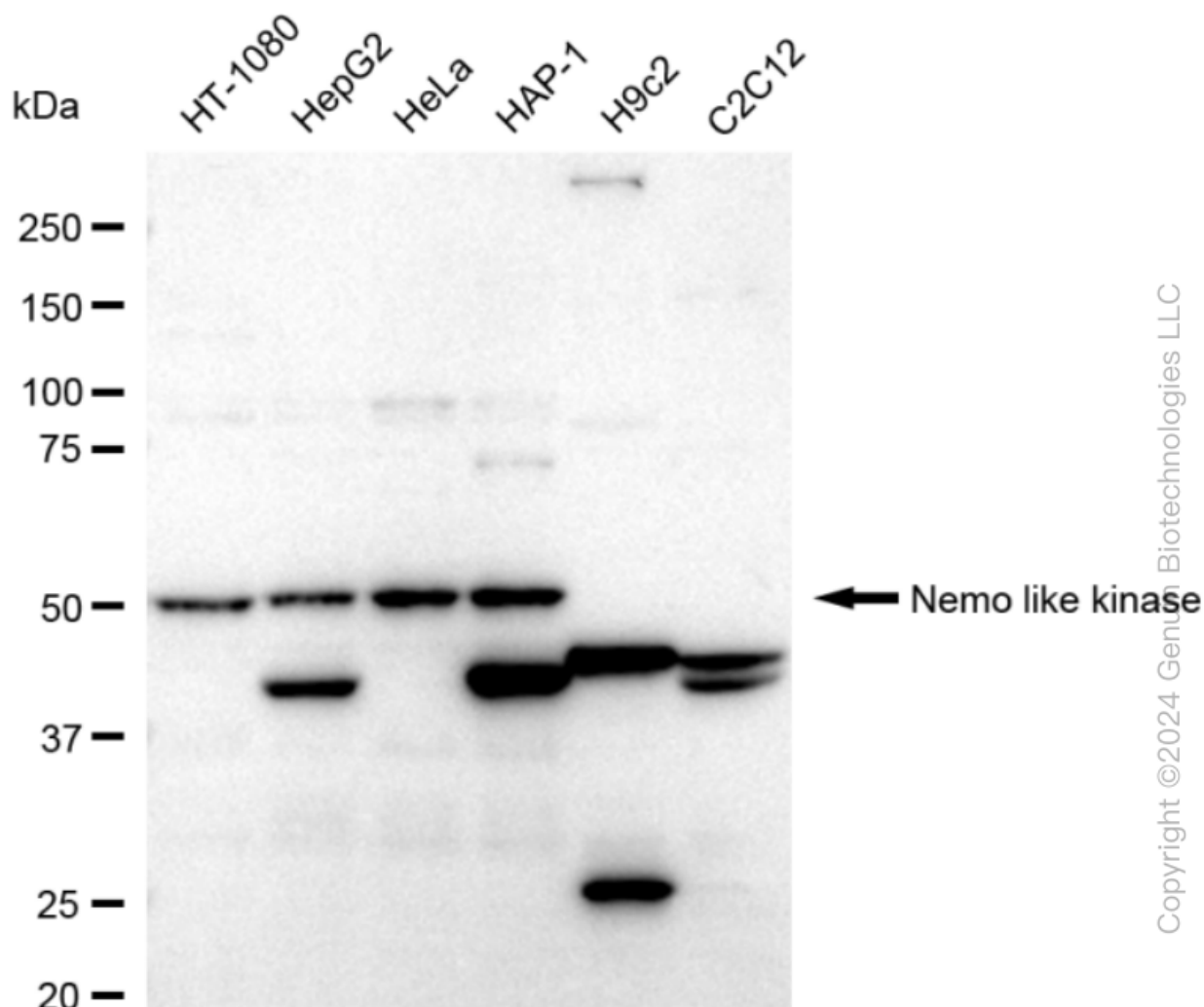
SALES@GENUINBIOTECH.COM  
FAX: +1-540-855-7041

**WWW.GENUINBIOTECH.COM**

## KD-Validated Anti-Nemo Like Kinase Recombinant Rabbit Monoclonal Antibody

PAGE 3

and smart gain: Medium. Scale bar: 20  $\mu$ m.



Western blotting analysis using anti-Nemo like kinase antibody (Cat#62384). Total cell lysates (30  $\mu$ g) from various cell lines were loaded and separated by SDS-PAGE. The blot was incubated with anti-Nemo like kinase antibody (Cat#62384, 1:5,000) and HRP-conjugated goat anti-rabbit secondary antibody (Cat#201, 1:20,000) respectively. Image was developed using FeQ™ ECL Substrate Kit (Cat#226).

### SUPPORT

SUPPORT@GENUINBIOTECH.COM  
TEL: +1-540-855-7041

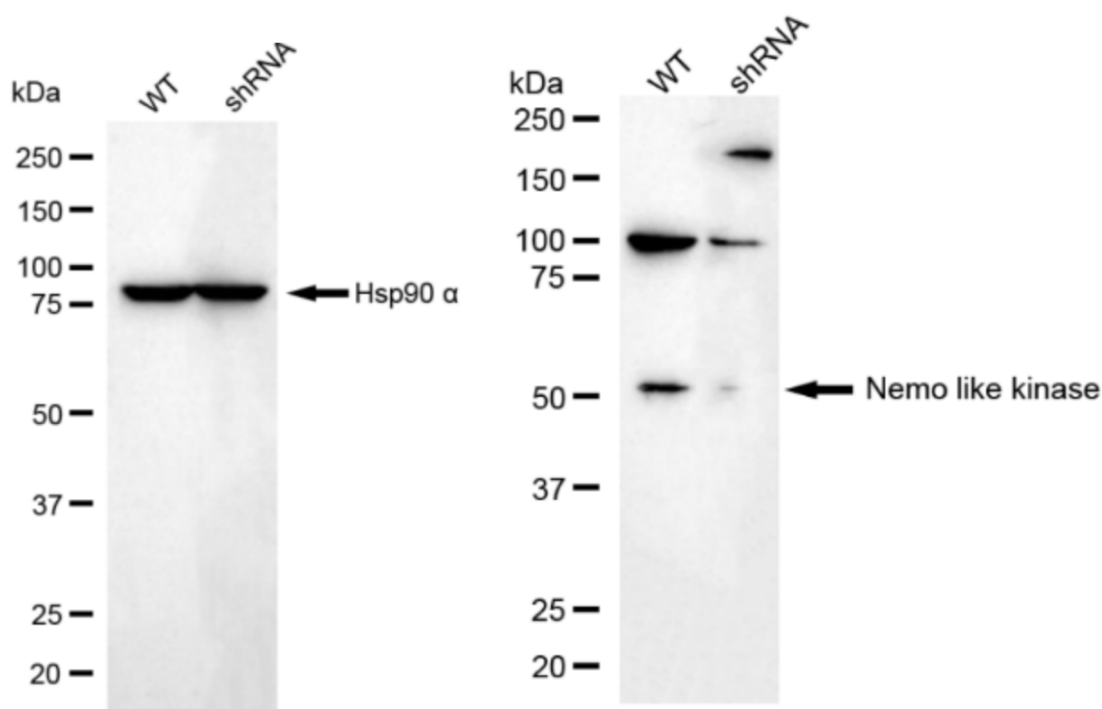
### ORDERS

SALES@GENUINBIOTECH.COM  
FAX: +1-540-855-7041

WWW.GENUINBIOTECH.COM

## KD-Validated Anti-Nemo Like Kinase Recombinant Rabbit Monoclonal Antibody

PAGE 4



Copyright ©2024 Genuin Biotechnologies LLC

Western blotting analysis using anti-Nemo like kinase antibody (Cat#62384). Nemo like kinase expression in wild type (WT) and Nemo like kinase shRNA knockdown (KD) HT-1080 cells with 20  $\mu$ g of total cell lysates. Hsp90  $\alpha$  serves as a loading control. The blot was incubated with anti-Nemo like kinase antibody (Cat#62384, 1:5,000) and HRP-conjugated goat anti-rabbit secondary antibody (Cat#201, 1:20,000) respectively. Image was developed using NaQ™ ECL Substrate Kit (Cat#716).

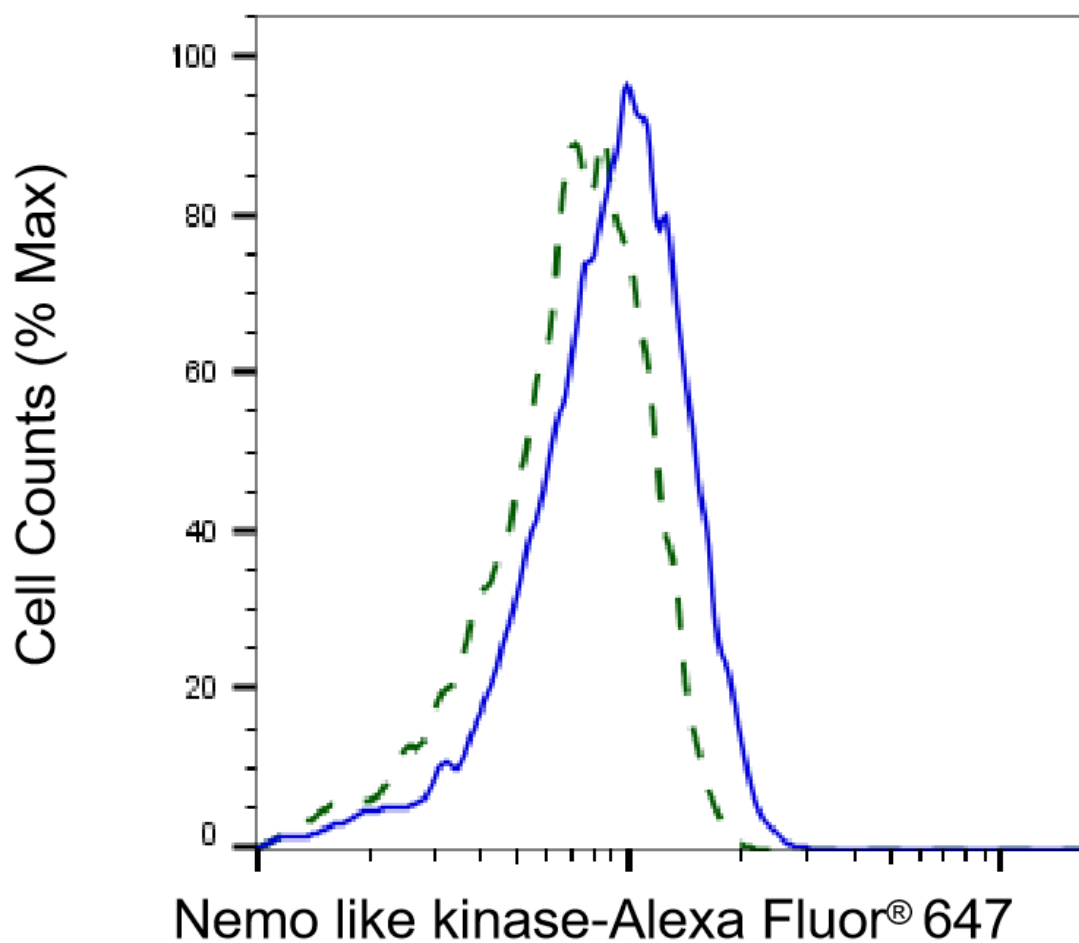
### SUPPORT

SUPPORT@GENUINBIOTECH.COM  
TEL: +1-540-855-7041

### ORDERS

SALES@GENUINBIOTECH.COM  
FAX: +1-540-855-7041

[WWW.GENUINBIOTECH.COM](http://WWW.GENUINBIOTECH.COM)



Copyright ©2025 Genuin Biotechnologies LLC

Validation of Nemo like kinase knockdown using flow cytometry. Wild-type(WT, Blue) and knockdown(KD, Green) HT-1080 cells were stained with anti-Nemo like kinase antibody (Cat#62384, 1:2,000) and analyzed using BD flow cytometer.