

# KD-Validated Anti-NDUFA13 Recombinant Rabbit Monoclonal Antibody



**Catalog #: 62387**

## Aliases

NADH:Ubiquinone Oxidoreductase Subunit A13; GRIM-19; GRIM19; CGI-39; CDA016; B16.6; Gene Associated With Retinoic And Interferon-Induced Mortality 19 Protein; Gene Associated With Retinoic And IFN-Induced Mortality 19 Protein; NADH Dehydrogenase [Ubiquinone] 1 Alpha Subcomplex Subunit 13; NADH Dehydrogenase (Ubiquinone) 1 Alpha Subcomplex, 13; NADH-Ubiquinone Oxidoreductase B16.6 Subunit; Cell Death Regulatory Protein GRIM-19; Complex I B16.6 Subunit; Complex I-B16.6; CI-B16.6; Cell Death-Regulatory Protein GRIM19; MC1DN28

## Background

Gene Name: NDUFA13

NCBI Gene Entry: [51079](#)

UniProt Entry: [Q9P0J0](#)

## Application Information

Molecular Weight: Predicted, 17 kDa, observed, 17 kDa

Clonality: Rabbit monoclonal antibody

Clone ID: 24GB600

Species Reactivity: Human

Applications Tested: Western blotting (WB), immunocytochemistry (IC)

## Immunogen

A synthesized peptide derived from human GRIM19

## Isotype

Rabbit IgG

## Storage Buffer

Supplied in PBS (pH 7.4) containing 50% glycerol, and 0.02% sodium azide.

## Storage

Store at -20 °C for one year.

## Recommended Dilutions

Western Blotting (WB): 1:1,000-1:5,000

Immunocytochemistry (IC): 1:100-1:1,000

---

### SUPPORT

SUPPORT@GENUINBIOTECH.COM  
TEL: +1-540-855-7041

### ORDERS

SALES@GENUINBIOTECH.COM  
FAX: +1-540-855-7041

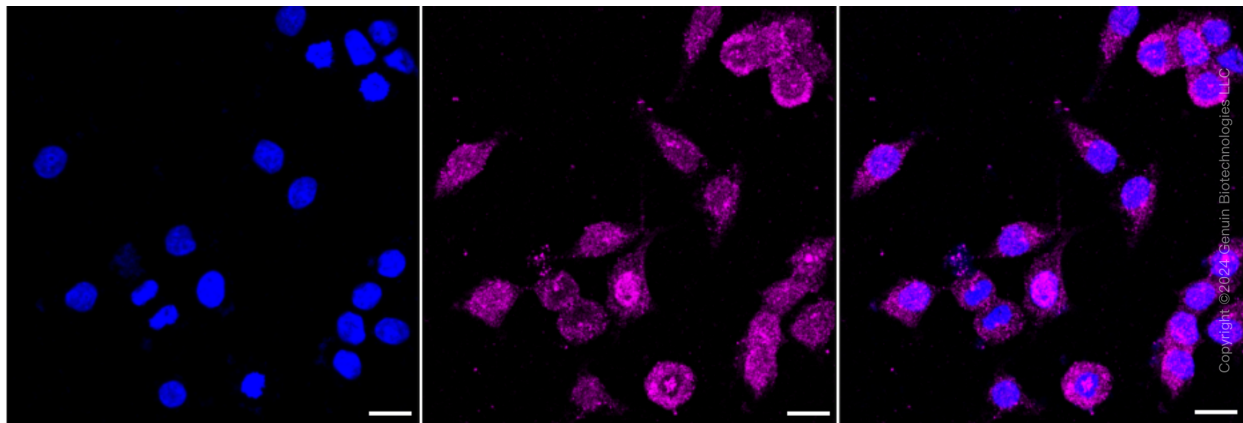
[WWW.GENUINBIOTECH.COM](http://WWW.GENUINBIOTECH.COM)

## KD-Validated Anti-NDUFA13 Recombinant Rabbit Monoclonal Antibody

PAGE 2

**Note:** This product is for research use only.

### Validation Data



Immunocytochemical staining of HeLa cells with anti-NDUFA13 antibody (Cat#62387, 1:1,000). Nuclei were stained blue with DAPI; NDUFA13 was stained magenta with Alexa Fluor® 647. Images were taken using Leica stellaris 5. Protein abundance based on laser Intensity and smart gain: Medium. Scale bar: 20  $\mu$ m.

---

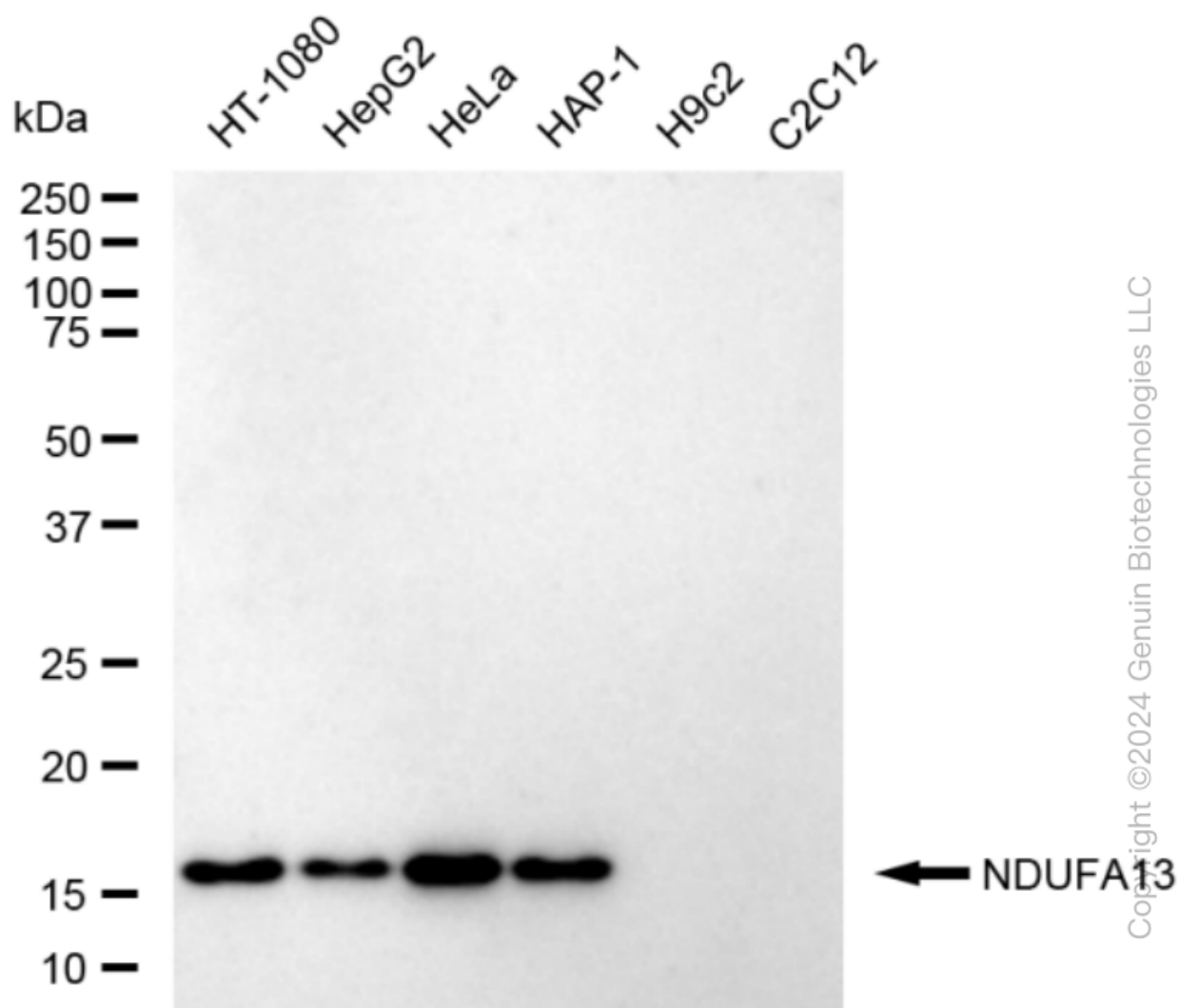
#### SUPPORT

SUPPORT@GENUINBIOTECH.COM  
TEL: +1-540-855-7041

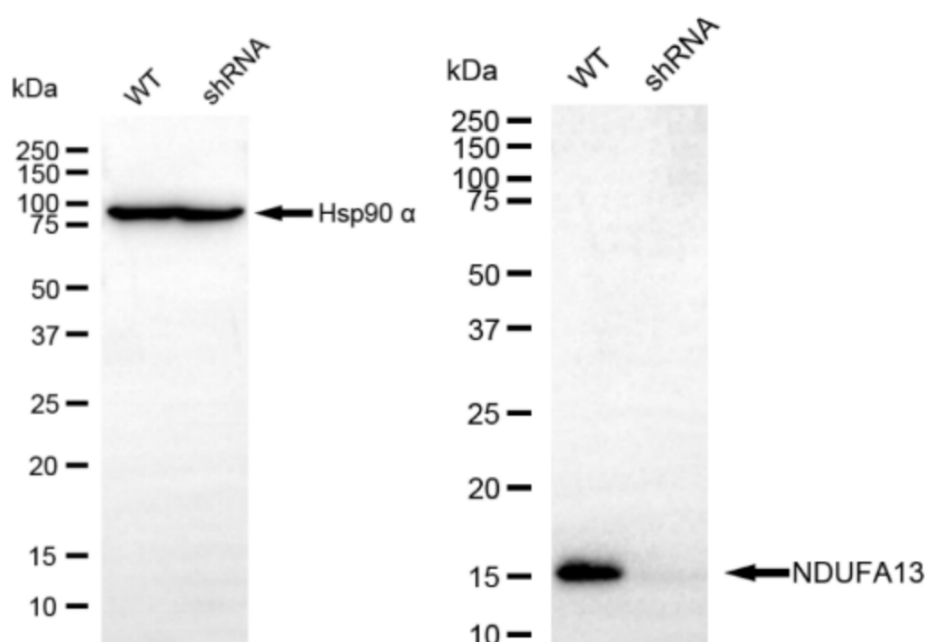
#### ORDERS

SALES@GENUINBIOTECH.COM  
FAX: +1-540-855-7041

[WWW.GENUINBIOTECH.COM](http://WWW.GENUINBIOTECH.COM)

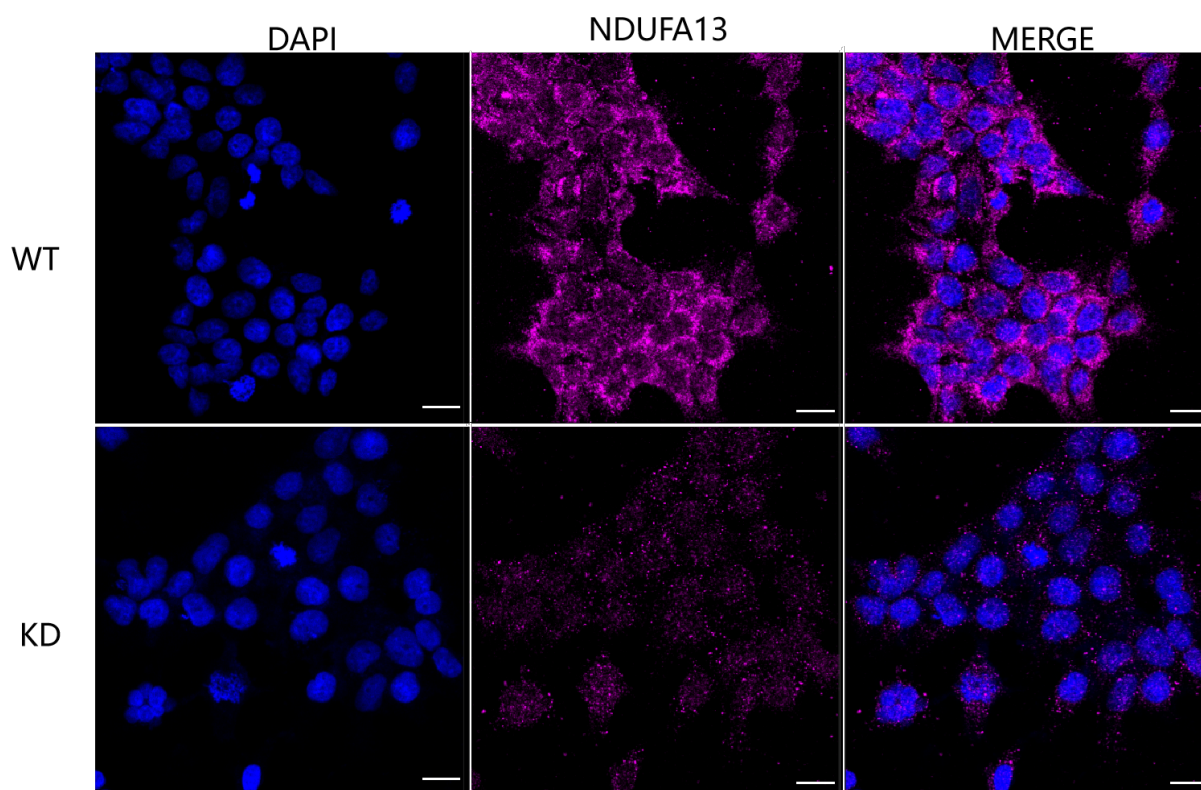


Western blotting analysis using anti-NDUFA13 antibody (Cat#62387). Total cell lysates (30 µg) from various cell lines were loaded and separated by SDS-PAGE. The blot was incubated with anti-NDUFA13 antibody (Cat#62387, 1:5,000) and HRP-conjugated goat anti-rabbit secondary antibody (Cat#201, 1:20,000) respectively. Image was developed using FeQ™ ECL Substrate Kit (Cat#226).



Copyright ©2024 Genuin Biotechnologies LLC

Western blotting analysis using anti-NDUFA13 antibody (Cat#62387). NDUFA13 expression in wild type (WT) and NDUFA13 shRNA knockdown (KD) HeLa cells with 20 µg of total cell lysates. β-Tubulin serves as a loading control. The blot was incubated with anti-NDUFA13 antibody (Cat#62387, 1:5,000) and HRP-conjugated goat anti-rabbit secondary antibody (Cat#201, 1:20,000) respectively. Image was developed using NaQ™ ECL Substrate Kit (Cat#716).



Copyright ©2025 Genuin Biotechnologies LLC

## **KD-Validated Anti-NDUFA13 Recombinant Rabbit Monoclonal Antibody**

PAGE 5

Immunocytochemical staining of HeLa cells using anti-NDUFA13 antibody (Cat#62387, 1:1,000), Top panel: wild-type (WT); Bottom panel: NDUFA13 shRNA knockdown (KD). Nuclei were stained blue with DAPI; NDUFA13 was stained magenta with Alexa Fluor® 647. Scale bar, 20 µm. Permeabilization: Triton.

---

### **SUPPORT**

SUPPORT@GENUINBIOTECH.COM  
TEL: +1-540-855-7041

### **ORDERS**

SALES@GENUINBIOTECH.COM  
FAX: +1-540-855-7041

**WWW.GENUINBIOTECH.COM**