

KD-Validated Anti-MARK2 Recombinant Rabbit Monoclonal Antibody



Catalog #: 62402

Aliases

Microtubule Affinity Regulating Kinase 2; Par1b; MAP/Microtubule Affinity-Regulating Kinase 2; ELKL Motif Kinase 1; PAR-1B; PAR-1; EMK1; Serine/Threonine-Protein Kinase MARK2; Ser/Thr Protein Kinase PAR-1B; PAR1 Homolog B; EC 2.7.11.1; EMK-1; Serine/Threonine Protein Kinase EMK; Testicular Tissue Protein Li 117; Protein-Serine/Threonine Kinase; Serine/Threonine Kinase; ELKL Motif Kinase; PAR1 Homolog; EC 2.7.11.26; EC 2.7.11; Par-1b

Background

Gene Name: MARK2

NCBI Gene Entry: [2011](#)

UniProt Entry: [Q7KZI7](#)

Application Information

Molecular Weight: Predicted, 88 kDa, observed, 74 kDa

Clonality: Rabbit monoclonal antibody

Clone ID: 24GB675

Species Reactivity: Human, mouse

Applications Tested: Western blotting (WB), flow cytometry (FCM), immunocytochemistry (IC)

Immunogen

A synthesized peptide derived from human MARK2

Isotype

Rabbit IgG

Storage Buffer

Supplied in PBS (pH 7.4) containing 50% glycerol, and 0.02% sodium azide.

Storage

Store at -20 °C for one year.

Recommended Dilutions

Western Blotting (WB): 1:1,000-1:5,000

Flow Cytometry (FCM): 1:2,000

Immunocytochemistry (IC): 1:100-1:1,000

SUPPORT

SUPPORT@GENUINBIOTECH.COM
TEL: +1-540-855-7041

ORDERS

SALES@GENUINBIOTECH.COM
FAX: +1-540-855-7041

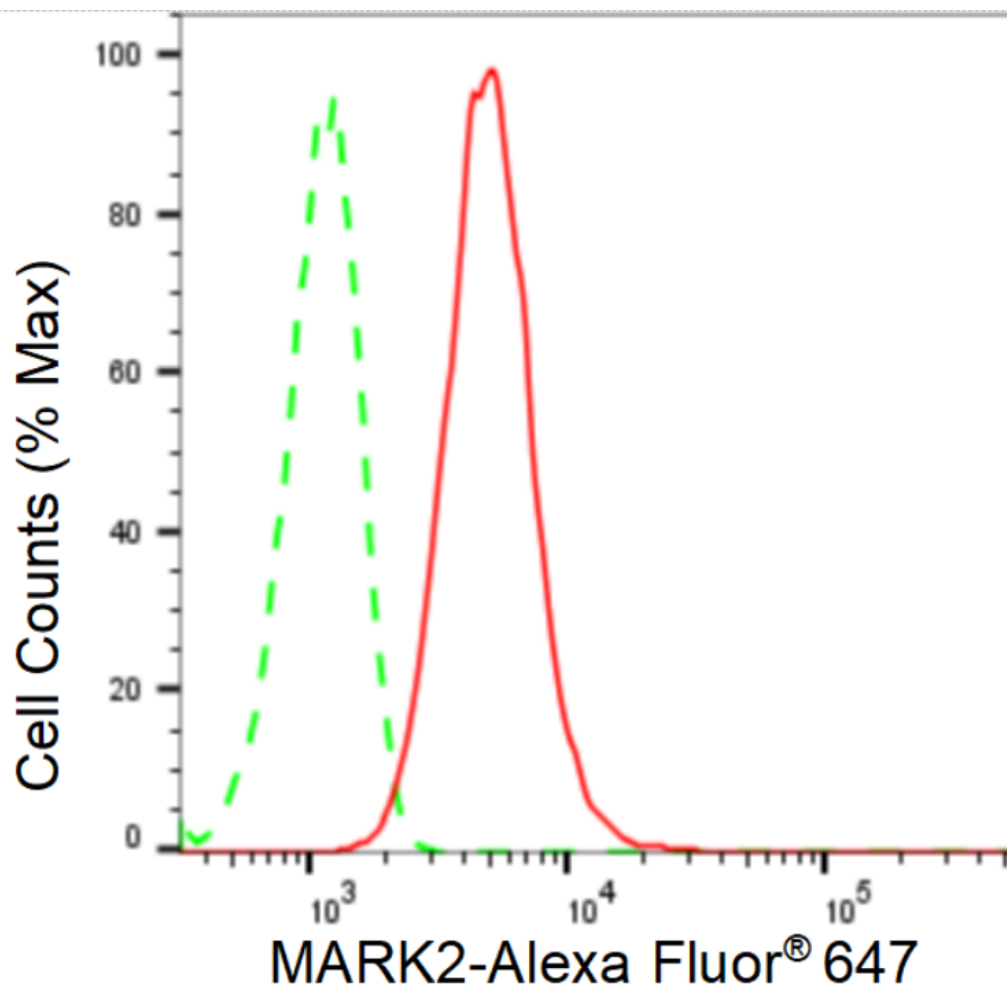
WWW.GENUINBIOTECH.COM

KD-Validated Anti-MARK2 Recombinant Rabbit Monoclonal Antibody

PAGE 2

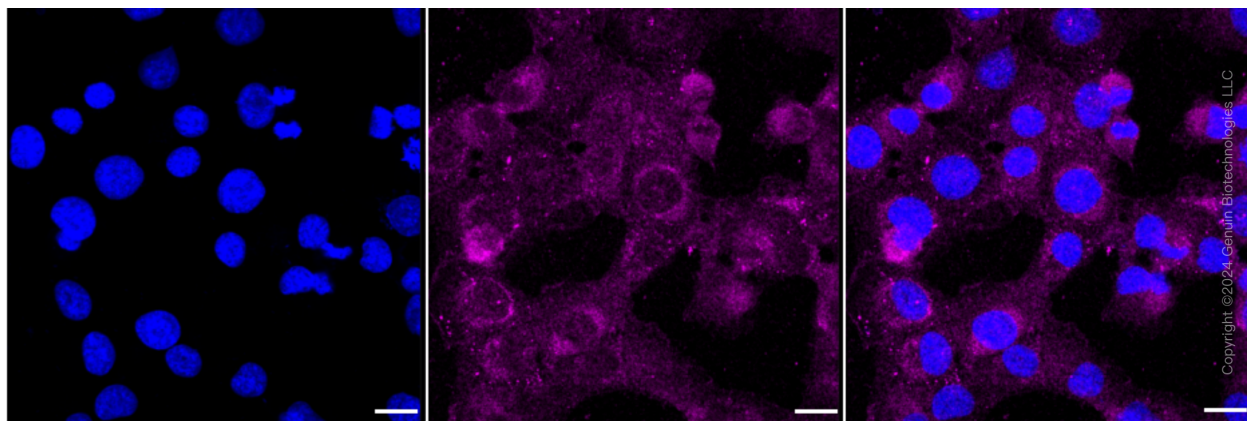
Note: This product is for research use only.

Validation Data



Copyright ©2024 Genuin Biotechnologies LLC

Flow cytometric analysis of MARK2 expression in HT-1080 cells using MARK2 antibody (Cat#62402, 1:2,000). Green, isotype control; red, MARK2.



Copyright ©2024 Genuin Biotechnologies LLC

SUPPORT

SUPPORT@GENUINBIOTECH.COM
TEL: +1-540-855-7041

ORDERS

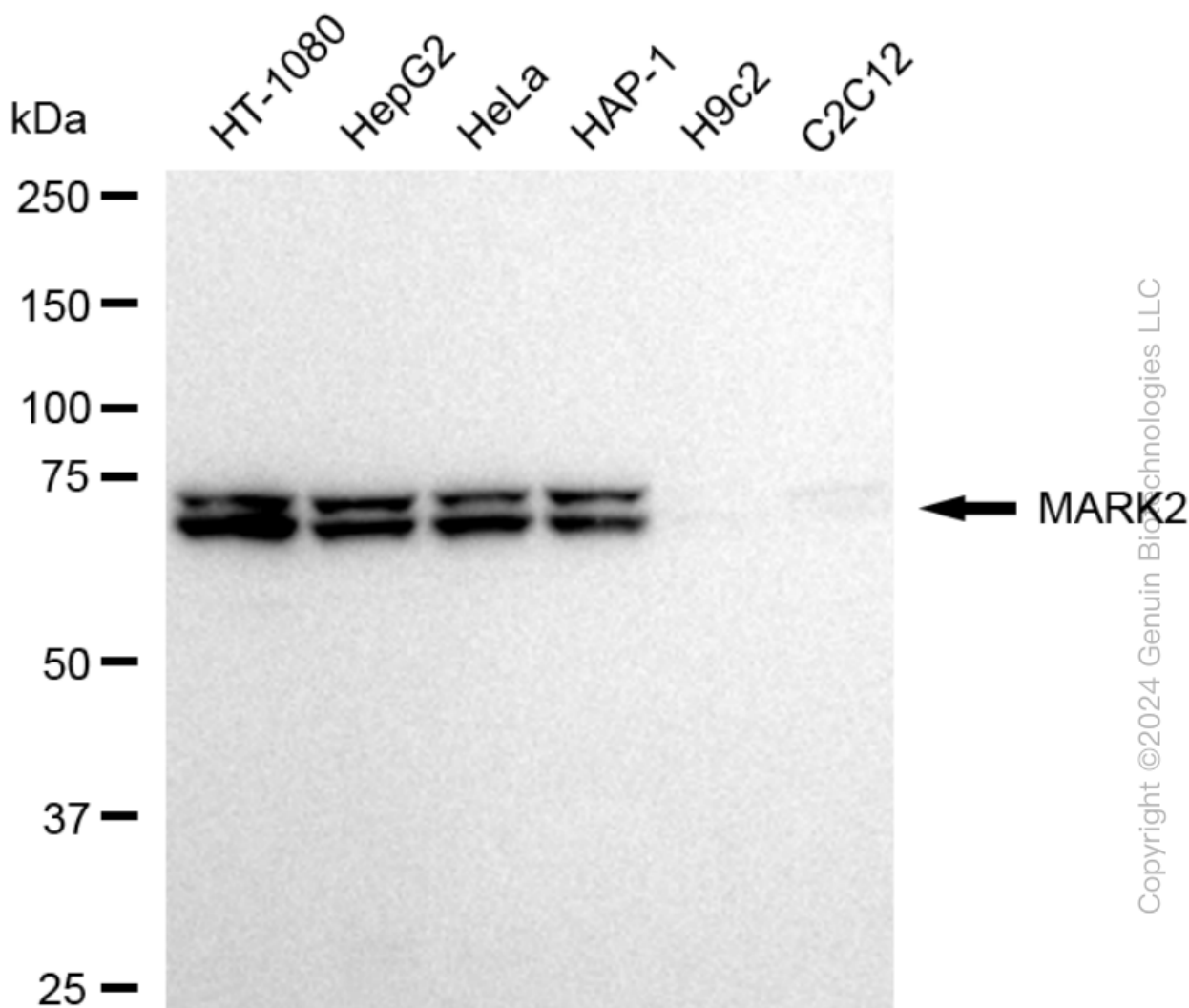
SALES@GENUINBIOTECH.COM
FAX: +1-540-855-7041

WWW.GENUINBIOTECH.COM

KD-Validated Anti-MARK2 Recombinant Rabbit Monoclonal Antibody

PAGE 3

Immunocytochemical staining of HT-1080 cells with anti-MARK2 antibody (Cat#62402, 1:1,000). Nuclei were stained blue with DAPI; MARK2 was stained magenta with Alexa Fluor® 647. Images were taken using Leica stellaris 5. Protein abundance based on laser Intensity and smart gain: Medium. Scale bar: 20 μ m.



Western blotting analysis using anti-MARK2 antibody (Cat#62402). Total cell lysates (30 μ g) from various cell lines were loaded and separated by SDS-PAGE. The blot was incubated with anti-MARK2 antibody (Cat#62402, 1:5,000) and HRP-conjugated goat anti-rabbit secondary antibody (Cat#201, 1:20,000) respectively. Image was developed using FeQ™ ECL Substrate Kit (Cat#226).

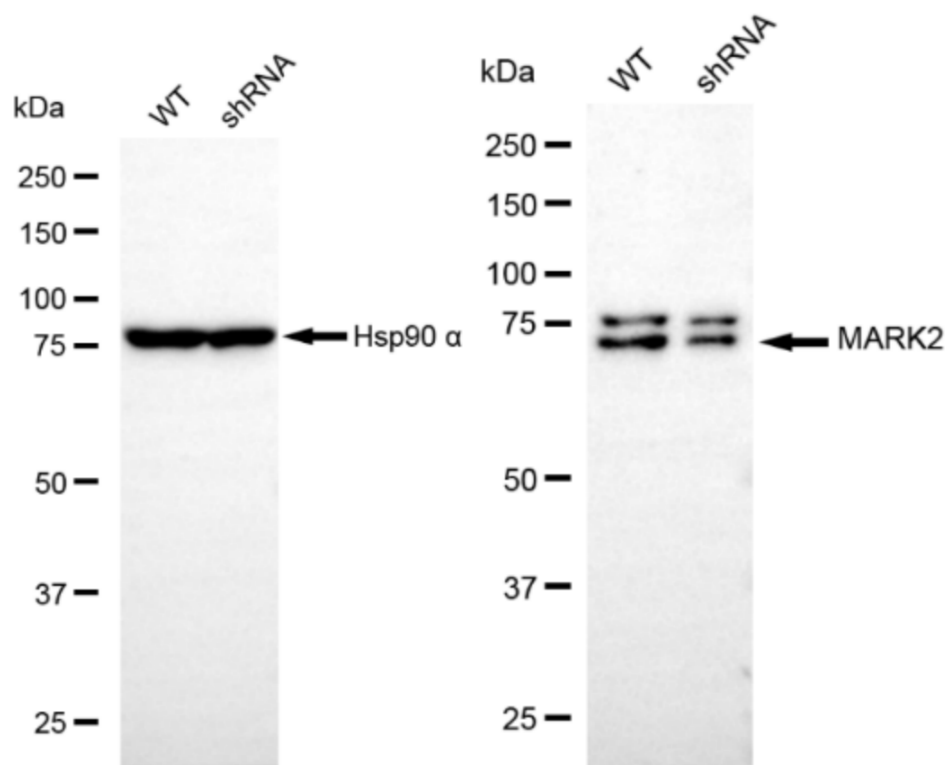
SUPPORT

SUPPORT@GENUINBIOTECH.COM
TEL: +1-540-855-7041

ORDERS

SALES@GENUINBIOTECH.COM
FAX: +1-540-855-7041

WWW.GENUINBIOTECH.COM



Copyright ©2024 Genuin Biotechnologies LLC

Western blotting analysis using anti-MARK2 antibody (Cat#62402). MARK2 expression in wild type (WT) and MARK2 shRNA knockdown (KD) HeLa cells with 20 µg of total cell lysates. β-Tubulin serves as a loading control. The blot was incubated with anti-MARK2 antibody (Cat#62402, 1:5,000) and HRP-conjugated goat anti-rabbit secondary antibody (Cat#201, 1:20,000) respectively. Image was developed using NaQ™ ECL Substrate Kit (Cat#716).