

KD-Validated Anti-Olfactomedin 4 Recombinant Rabbit Monoclonal Antibody



Catalog #: 62403

Aliases

Olfactomedin 4; GW112; OlfD; GC1; G-CSF-Stimulated Clone 1 Protein; Antiapoptotic Protein GW112; Olfactomedin-4; HGC-1; HOLfD; OLM4; BA209J19.1; UNQ362

Background

Gene Name: OLFM4

NCBI Gene Entry: [10562](#)

UniProt Entry: [Q6UX06](#)

Application Information

Molecular Weight: Predicted, 57 kDa, observed, 54 kDa

Clonality: Rabbit monoclonal antibody

Clone ID: 24GB680

Species Reactivity: Human, mouse, rat

Applications Tested: Western blotting (WB), flow cytometry (FCM), immunocytochemistry (IC)

Immunogen

A synthesized peptide derived from human OLFM4

Isotype

Rabbit IgG

Storage Buffer

Supplied in PBS (pH 7.4) containing 50% glycerol, and 0.02% sodium azide.

Storage

Store at -20 °C for one year.

Recommended Dilutions

Western Blotting (WB): 1:1,000-1:5,000

Flow Cytometry (FCM): 1:2,000

Immunocytochemistry (IC): 1:100-1:1,000

Note: This product is for research use only.

Validation Data

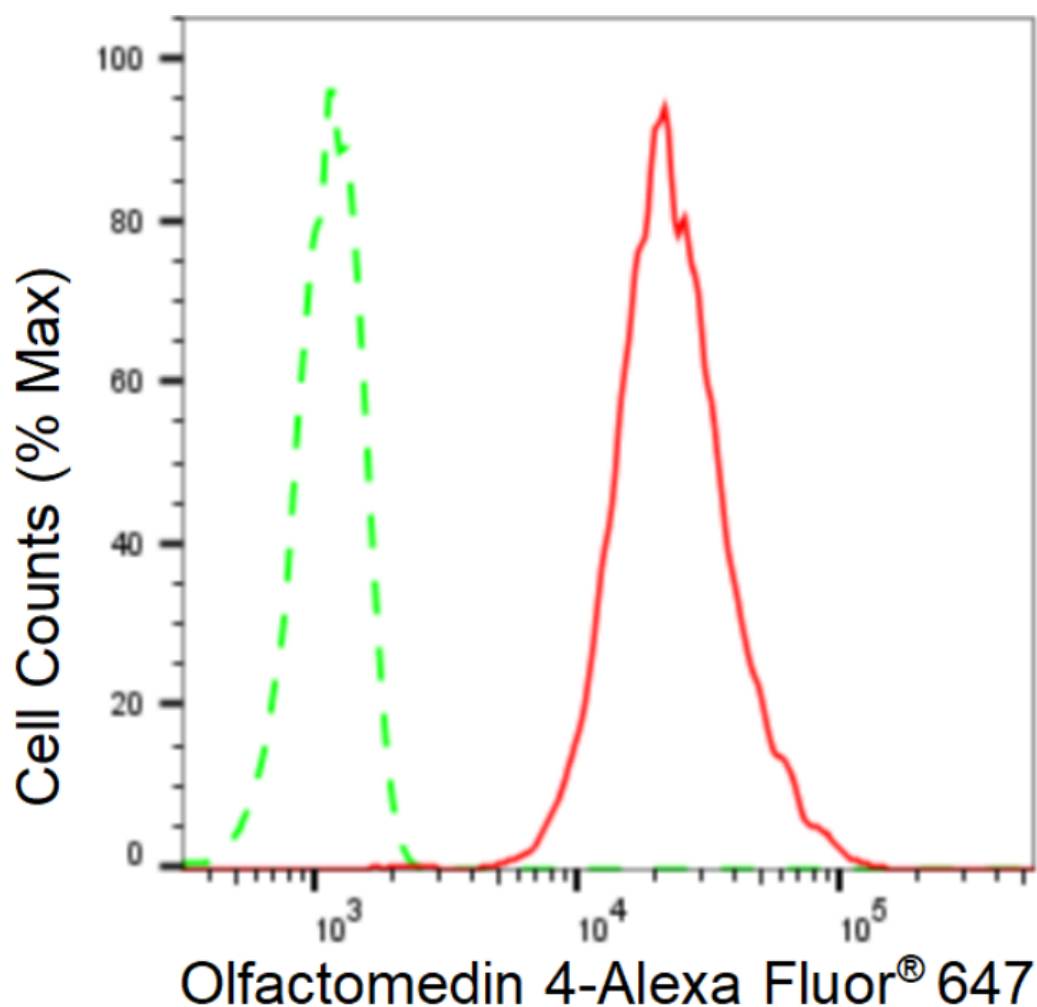
SUPPORT

SUPPORT@GENUINBIOTECH.COM
TEL: +1-540-855-7041

ORDERS

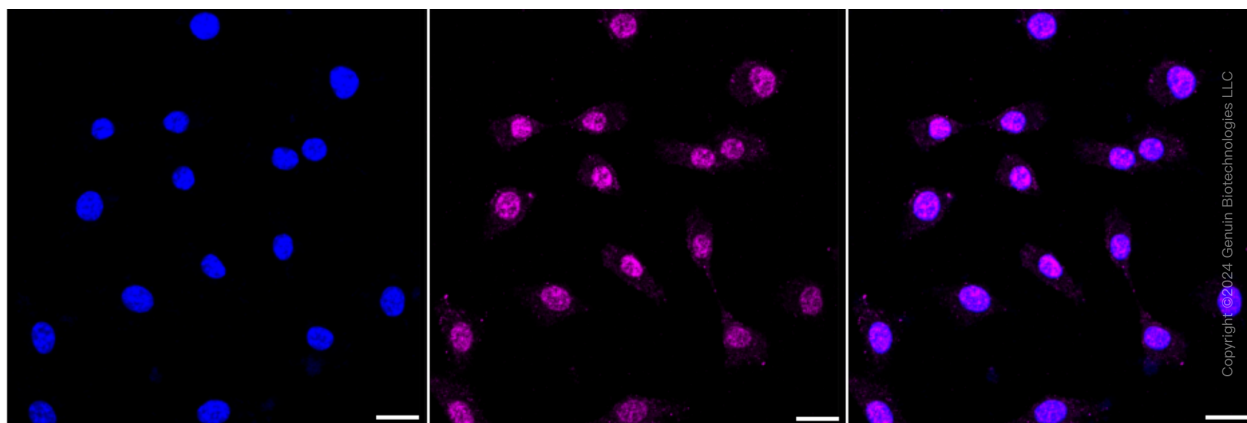
SALES@GENUINBIOTECH.COM
FAX: +1-540-855-7041

WWW.GENUINBIOTECH.COM



Copyright ©2024 Genuin Biotechnologies LLC

Flow cytometric analysis of Olfactomedin 4 expression in C2C12 cells using Olfactomedin 4 antibody (Cat#62403, 1:2,000). Green, isotype control; red, Olfactomedin 4.



Immunocytochemical staining of C2C12 cells with anti-Olfactomedin 4 antibody (Cat#62403, 1:1,000). Nuclei were stained blue with DAPI; Olfactomedin 4 was stained magenta with Alexa Fluor® 647. Images were taken using Leica stellaris 5. Protein abundance based on laser Intensity

SUPPORT

SUPPORT@GENUINBIOTECH.COM
TEL: +1-540-855-7041

ORDERS

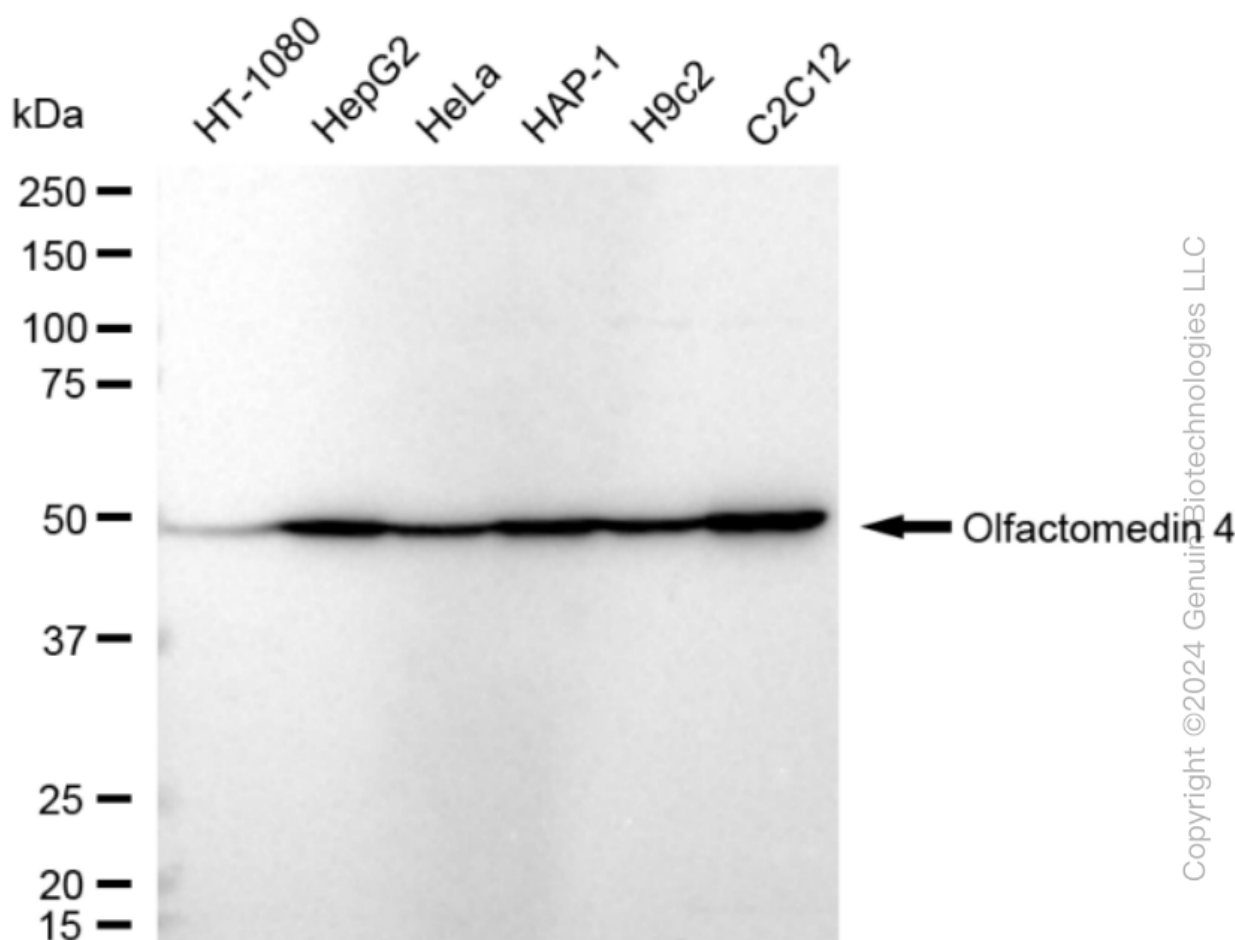
SALES@GENUINBIOTECH.COM
FAX: +1-540-855-7041

WWW.GENUINBIOTECH.COM

KD-Validated Anti-Olfactomedin 4 Recombinant Rabbit Monoclonal Antibody

PAGE 3

and smart gain: High. Scale bar: 20 μ m.



Western blotting analysis using anti-Olfactomedin 4 antibody (Cat#62403). Total cell lysates (30 μ g) from various cell lines were loaded and separated by SDS-PAGE. The blot was incubated with anti-Olfactomedin 4 antibody (Cat#62403, 1:5,000) and HRP-conjugated goat anti-rabbit secondary antibody (Cat#201, 1:20,000) respectively. Image was developed using FeQ™ ECL Substrate Kit (Cat#226).

SUPPORT

SUPPORT@GENUINBIOTECH.COM
TEL: +1-540-855-7041

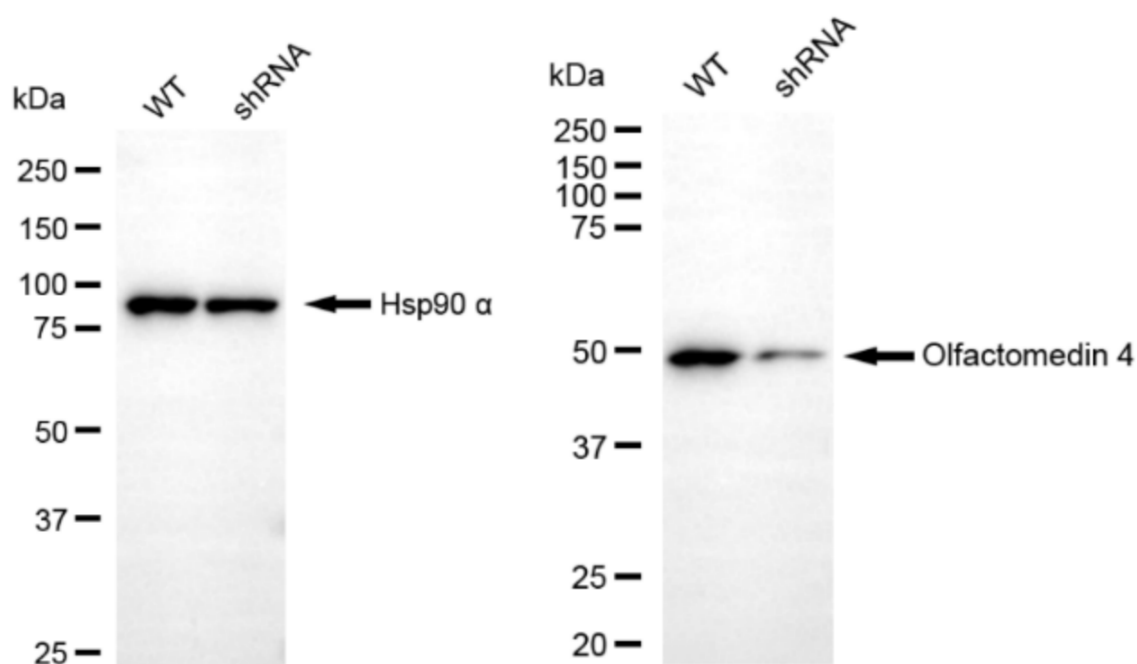
ORDERS

SALES@GENUINBIOTECH.COM
FAX: +1-540-855-7041

WWW.GENUINBIOTECH.COM

KD-Validated Anti-Olfactomedin 4 Recombinant Rabbit Monoclonal Antibody

PAGE 4



Copyright ©2024 Genuin Biotechnologies LLC

Western blotting analysis using anti-Olfactomedin 4 antibody (Cat#62403). Olfactomedin 4 expression in wild type (WT) and Olfactomedin 4 shRNA knockdown (KD) HeLa cells with 20 µg of total cell lysates. Hsp90 α serves as a loading control. The blot was incubated with anti-Olfactomedin 4 antibody (Cat#62403, 1:5,000) and HRP-conjugated goat anti-rabbit secondary antibody (Cat#201, 1:20,000) respectively. Image was developed using NaQ™ ECL Substrate Kit (Cat#716).

SUPPORT

SUPPORT@GENUINBIOTECH.COM
TEL: +1-540-855-7041

ORDERS

SALES@GENUINBIOTECH.COM
FAX: +1-540-855-7041

WWW.GENUINBIOTECH.COM