

KD-Validated Anti-Galactosidase beta 1 Recombinant Rabbit Monoclonal Antibody



Catalog #: 62411

Aliases

GLB1; Galactosidase Beta 1; ELNR1; EBP; Elastin Receptor 1, 67kDa; Elastin Binding Protein; Acid; Beta-Galactosidase; Beta-Galactosidase; EC 3.2.1.23; Lactase; Elastin Receptor 1 (67kD); Galactosidase, Beta 1; Elastin Receptor 1; MPS4B

Background

Gene Name: GLB1

NCBI Gene Entry: [2720](#)

UniProt Entry: [P16278](#)

Application Information

Molecular Weight: Predicted, 76 kDa, observed, 76 kDa

Clonality: Rabbit monoclonal antibody

Clone ID: 23GB1580

Species Reactivity: Human

Applications Tested: Western blotting (WB), flow cytometry (FCM), immunocytochemistry (IC)

Immunogen

A synthesized peptide derived from human GLB1

Isotype

Rabbit IgG

Storage Buffer

Supplied in PBS (pH 7.4) containing 50% glycerol, and 0.02% sodium azide.

Storage

Store at -20 °C for one year.

Recommended Dilutions

Western Blotting (WB): 1:1,000-1:5,000

Flow Cytometry (FCM): 1:2,000

Immunocytochemistry (IC): 1:100-1:1,000

Note: This product is for research use only.

SUPPORT

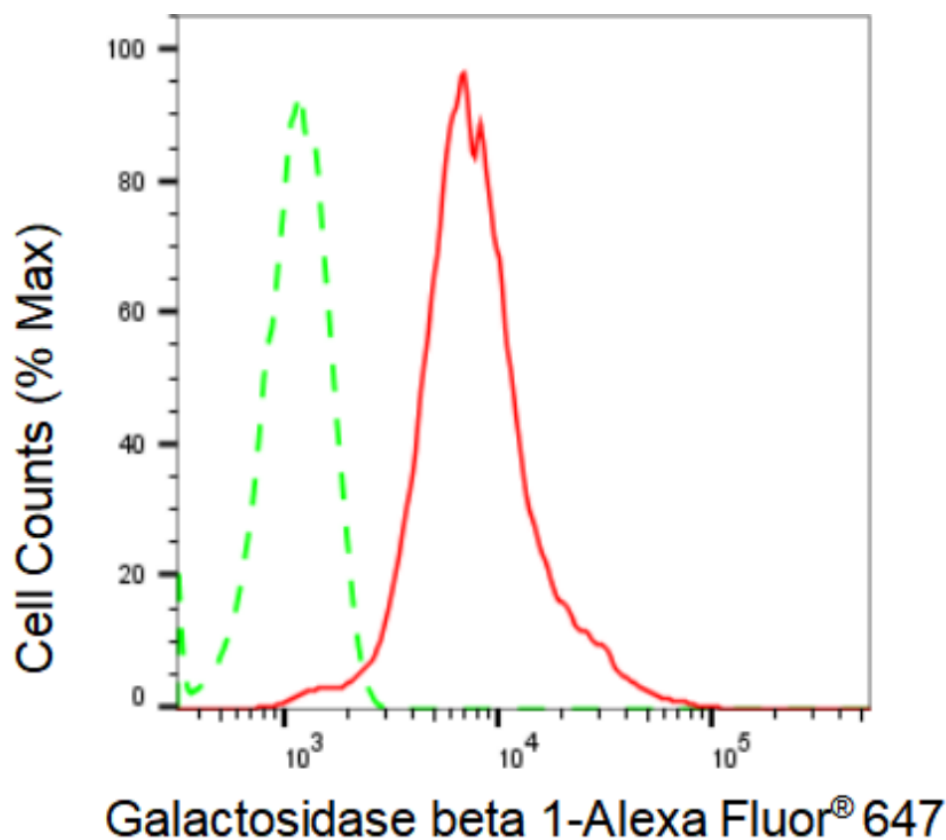
SUPPORT@GENUINBIOTECH.COM
TEL: +1-540-855-7041

ORDERS

SALES@GENUINBIOTECH.COM
FAX: +1-540-855-7041

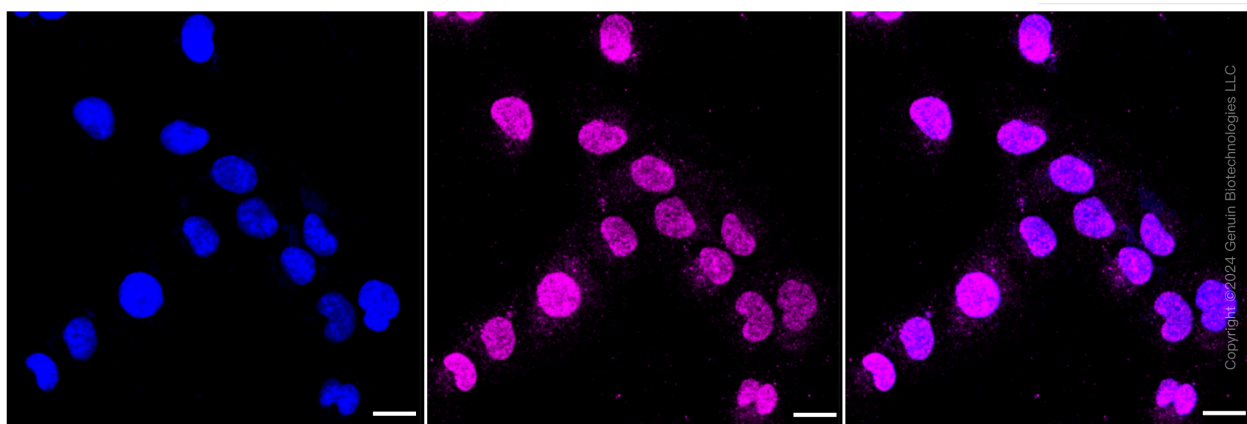
WWW.GENUINBIOTECH.COM

Validation Data



Copyright ©2024 Genuin Biotechnologies LLC

Flow cytometric analysis of Galactosidase beta 1 expression in HepG2 cells using Galactosidase beta 1 antibody (Cat#62411, 1:2,000). Green, isotype control; red, Galactosidase beta 1.



Copyright ©2024 Genuin Biotechnologies LLC

Immunocytochemical staining of HT-1080 cells with Galactosidase beta 1 antibody (Cat#62411, 1:1,000). Nuclei were stained blue with DAPI; Galactosidase beta 1 was stained magenta with Alexa Fluor® 647. Images were taken using Leica stellaris 5. Protein abundance based on laser Intensity and smart gain: Medium. Scale bar: 20 μ m.

SUPPORT

SUPPORT@GENUINBIOTECH.COM
TEL: +1-540-855-7041

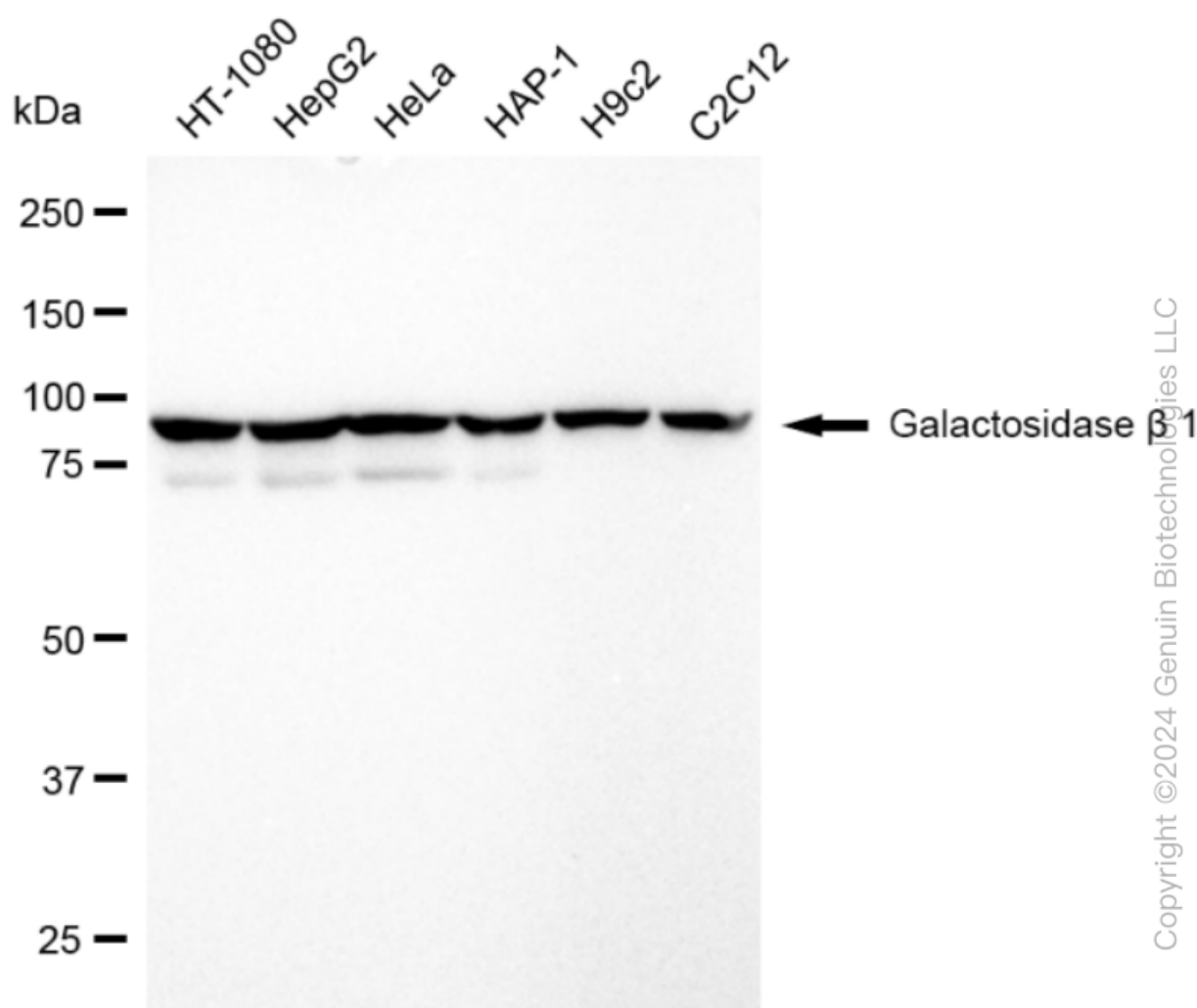
ORDERS

SALES@GENUINBIOTECH.COM
FAX: +1-540-855-7041

WWW.GENUINBIOTECH.COM

KD-Validated Anti-Galactosidase beta 1 Recombinant Rabbit Monoclonal Antibody

PAGE 3



Western blotting analysis using anti-Galactosidase beta 1 antibody (Cat#62411). Total cell lysates (30 µg) from various cell lines were loaded and separated by SDS-PAGE. The blot was incubated with anti-Galactosidase beta 1 antibody (Cat#62411, 1:5,000) and HRP-conjugated goat anti-rabbit secondary antibody (Cat#201, 1:20,000) respectively. Image was developed using FeQ™ ECL Substrate Kit (Cat#226).

SUPPORT

SUPPORT@GENUINBIOTECH.COM
TEL: +1-540-855-7041

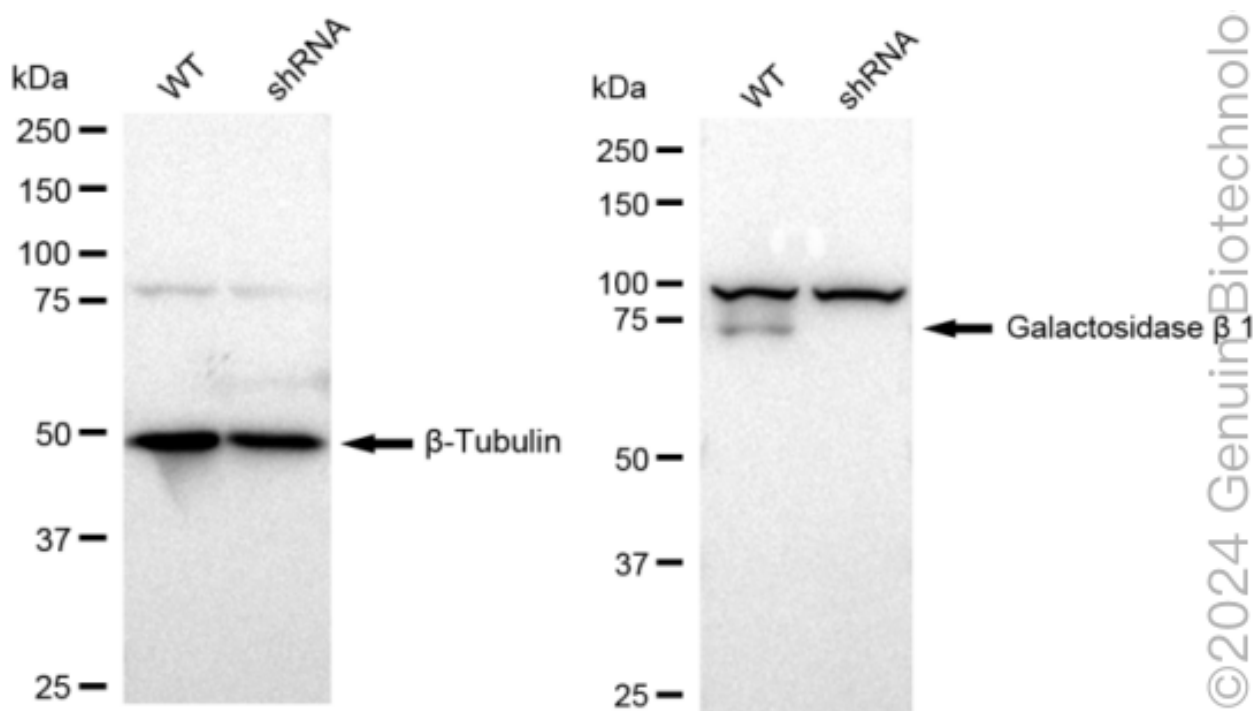
ORDERS

SALES@GENUINBIOTECH.COM
FAX: +1-540-855-7041

WWW.GENUINBIOTECH.COM

KD-Validated Anti-Galactosidase beta 1 Recombinant Rabbit Monoclonal Antibody

PAGE 4



Western blotting analysis using anti-Galactosidase beta 1 antibody (Cat#62411). Galactosidase beta 1 expression in wild type (WT) and galactosidase beta 1 shRNA knockdown (KD) HeLa cells with 30 μ g of total cell lysates. β -Tubulin serves as a loading control. The blot was incubated with anti-Galactosidase beta 1 antibody (Cat#62411, 1:5,000) and HRP-conjugated goat anti-rabbit secondary antibody (Cat#201, 1:20,000) respectively. Image was developed using FeQ™ ECL Substrate Kit (Cat#226).

SUPPORT

SUPPORT@GENUINBIOTECH.COM
TEL: +1-540-855-7041

ORDERS

SALES@GENUINBIOTECH.COM
FAX: +1-540-855-7041

WWW.GENUINBIOTECH.COM