

KD-Validated Anti-LYN Proto-Oncogene Recombinant Rabbit Monoclonal Antibody



Catalog #: 62412

Aliases

LYN Proto-Oncogene, Src Family Tyrosine Kinase; JTK8; V-Yes-1 Yamaguchi Sarcoma Viral Related Oncogene Homolog; Lck/Yes-Related Novel Protein Tyrosine Kinase; Tyrosine-Protein Kinase Lyn; EC 2.7.10.2; P53Lyn; P56Lyn; EC 2.7.10; SAIDV

Background

Gene Name: LYN

NCBI Gene Entry: [4067](#)

UniProt Entry: [P07948](#)

Application Information

Molecular Weight: Predicted, 59 kDa, observed, 56 kDa

Clonality: Rabbit monoclonal antibody

Clone ID: 24GB720

Species Reactivity: Human, mouse, rat

Applications Tested: Western blotting (WB), flow cytometry (FCM), immunocytochemistry (IC)

Immunogen

A synthesized peptide derived from human Lyn

Isotype

Rabbit IgG

Storage Buffer

Supplied in PBS (pH 7.4) containing 50% glycerol, and 0.02% sodium azide.

Storage

Store at -20 °C for one year.

Recommended Dilutions

Western Blotting (WB): 1:1,000-1:5,000

Flow Cytometry (FCM): 1:2,000

Immunocytochemistry (IC): 1:100-1:1,000

Note: This product is for research use only.

SUPPORT

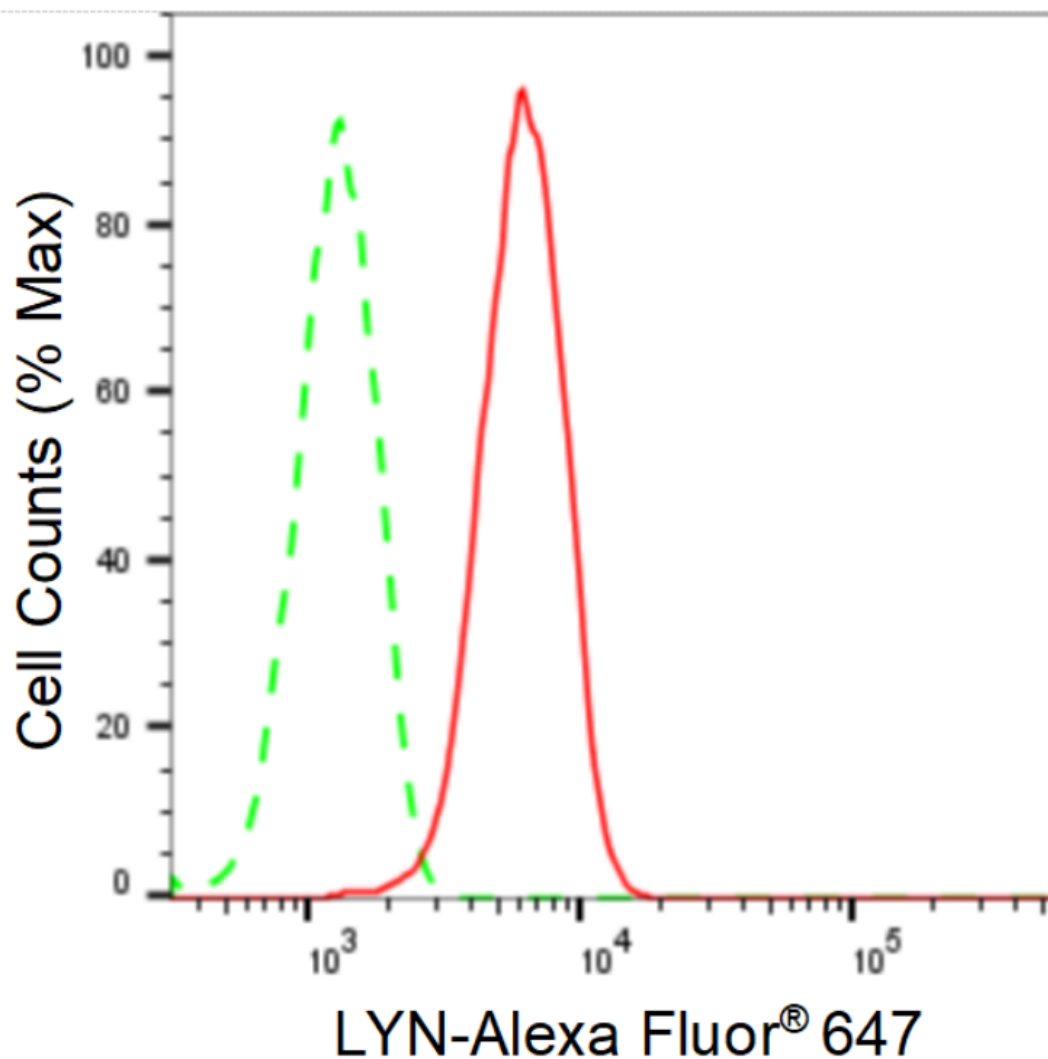
SUPPORT@GENUINBIOTECH.COM
TEL: +1-540-855-7041

ORDERS

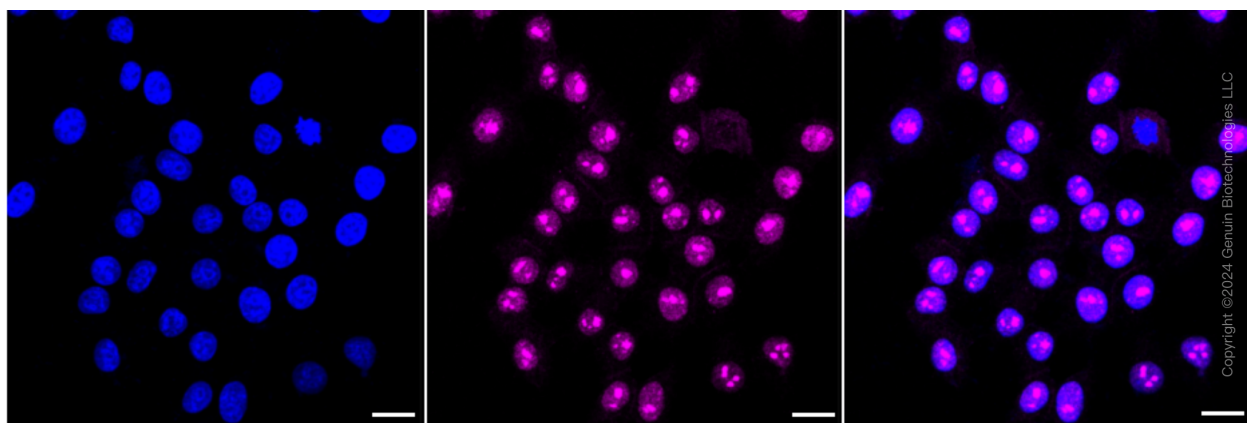
SALES@GENUINBIOTECH.COM
FAX: +1-540-855-7041

WWW.GENUINBIOTECH.COM

Validation Data



Flow cytometric analysis of LYN expression in HepG2 cells using anti-LYN antibody (Cat#62412, 1:2,000). Green, isotype control; red, LYN.



Immunocytochemical staining of HepG2 cells with anti-LYN antibody (Cat#62412, 1:1,000).

SUPPORT

SUPPORT@GENUINBIOTECH.COM
TEL: +1-540-855-7041

ORDERS

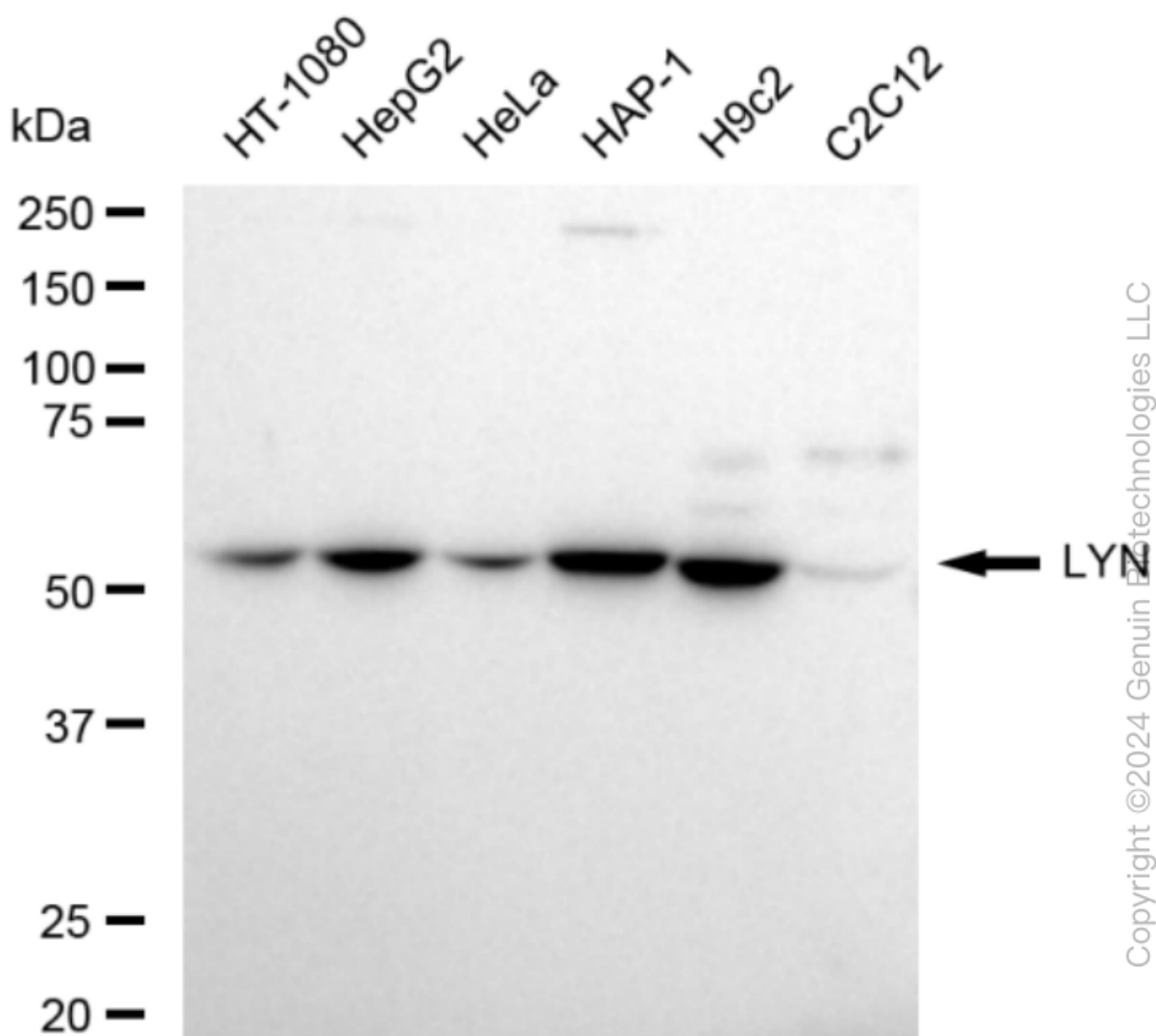
SALES@GENUINBIOTECH.COM
FAX: +1-540-855-7041

WWW.GENUINBIOTECH.COM

KD-Validated Anti-LYN Proto-Oncogene Recombinant Rabbit Monoclonal Antibody

PAGE 3

Nuclei were stained blue with DAPI; LYN was stained magenta with Alexa Fluor® 647. Images were taken using Leica stellaris 5. Protein abundance based on laser Intensity and smart gain: High. Scale bar: 20 µm.



Western blotting analysis using anti-LYN antibody (Cat#62412). Total cell lysates (30 µg) from various cell lines were loaded and separated by SDS-PAGE. The blot was incubated with anti-LYN antibody (Cat#62412, 1:5,000) and HRP-conjugated goat anti-rabbit secondary antibody (Cat#201, 1:20,000) respectively. Image was developed using FeQ™ ECL Substrate Kit (Cat#226).

SUPPORT

SUPPORT@GENUINBIOTECH.COM
TEL: +1-540-855-7041

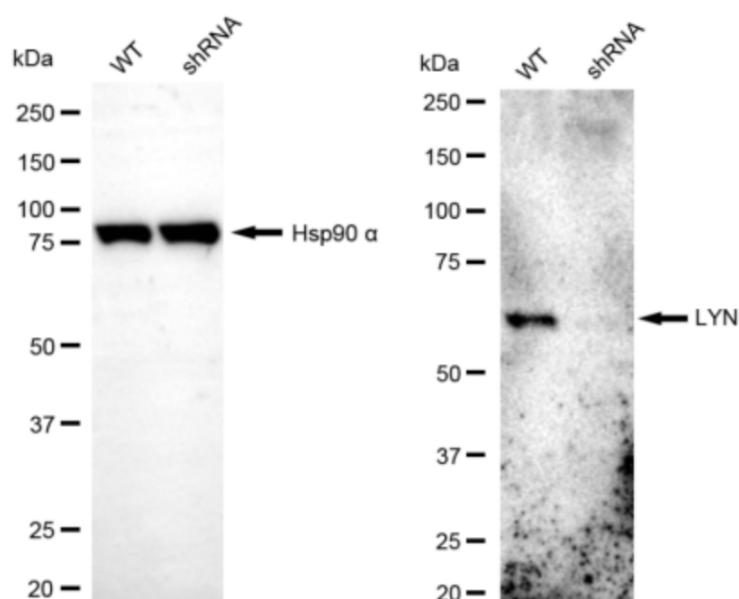
ORDERS

SALES@GENUINBIOTECH.COM
FAX: +1-540-855-7041

WWW.GENUINBIOTECH.COM

KD-Validated Anti-LYN Proto-Oncogene Recombinant Rabbit Monoclonal Antibody

PAGE 4



Copyright ©2024 Genuin Biotechnologies LLC

Western blotting analysis using anti-LYN antibody (Cat#62412). LYN expression in wild type (WT) and LYN shRNA knockdown (KD) HeLa cells with 30 μ g of total cell lysates. Hsp90 α serves as a loading control. The blot was incubated with anti-LYN antibody (Cat#62412, 1:5,000) and HRP-conjugated goat anti-rabbit secondary antibody (Cat#201, 1:20,000) respectively. Image was developed using NaQ™ ECL Substrate Kit (Cat#716).

SUPPORT

SUPPORT@GENUINBIOTECH.COM
TEL: +1-540-855-7041

ORDERS

SALES@GENUINBIOTECH.COM
FAX: +1-540-855-7041

WWW.GENUINBIOTECH.COM