

KD-Validated Anti-Pyruvate Dehydrogenase E2 Rabbit Monoclonal Antibody



Catalog #: 62417

Aliases

DLAT; Dihydrolipoamide S-Acetyltransferase; PBC;DLTA; PDC-E2; PDCE2; M2 Antigen Complex 70 KDa Subunit; E2 Component Of Pyruvate Dehydrogenase Complex; EC 2.3.1.12; Dihydrolipoamide Acetyltransferase Component Of Pyruvate Dehydrogenase Complex; Dihydrolipoyllysine-Residue Acetyltransferase Component Of Pyruvate Dehydrogenase Complex Mitochondrial; Pyruvate Dehydrogenase Complex Component E2; 70 KDa Mitochondrial Autoantigen Of Primary Biliary Cirrhosis; EC 2.3.1

Background

Gene Name: DLAT

NCBI Gene Entry: [1737](#)

UniProt Entry: [P10515](#)

Application Information

Molecular Weight: Predicted, 69 kDa, observed, 69 kDa

Clonality: Rabbit monoclonal antibody

Clone ID: 23GB1010

Species Reactivity: Human, mouse, rat

Applications Tested: Western blotting (WB), flow cytometry (FCM), immunocytochemistry (IC)

Immunogen

A synthesized peptide derived from human Pyruvate Dehydrogenase E2

Isotype

Rabbit IgG

Storage Buffer

Supplied in PBS (pH 7.4) containing 50% glycerol, and 0.02% sodium azide.

Storage

Store at -20 °C for one year.

Recommended Dilutions

Western Blotting (WB): 1:1,000-1:5,000

Flow Cytometry (FCM): 1:2,000

Immunocytochemistry (IC): 1:100-1:1,000

SUPPORT

SUPPORT@GENUINBIOTECH.COM
TEL: +1-540-855-7041

ORDERS

SALES@GENUINBIOTECH.COM
FAX:+1-540-855-7041

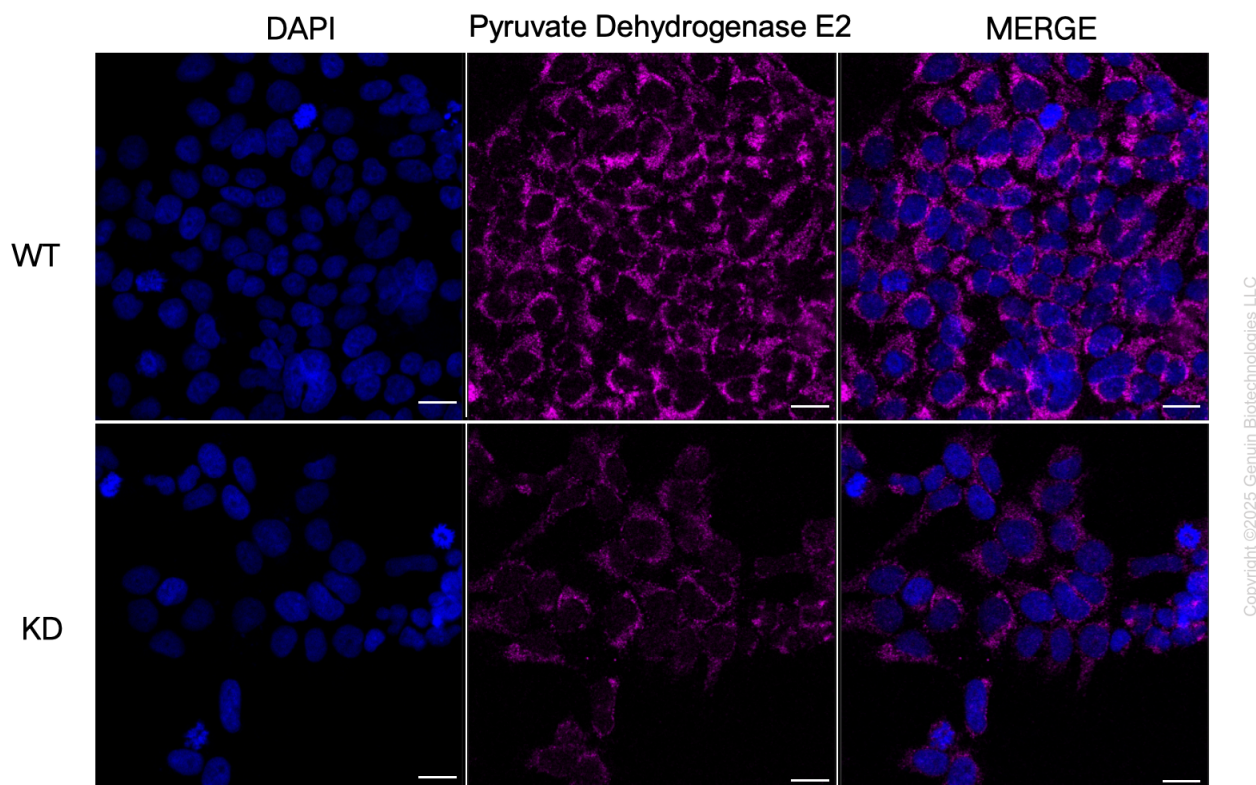
WWW.GENUINBIOTECH.COM

KD-Validated Anti-Pyruvate Dehydrogenase E2 Rabbit Monoclonal Antibody

PAGE 2

Note: This product is for research use only.

Validation Data



Immunocytochemical staining of HeLa cells using anti-Pyruvate Dehydrogenase E2 antibody (Cat#62417, 1:1,000), Top panel: wild-type (WT); Bottom panel: Pyruvate Dehydrogenase E2 shRNA knockdown (KD). Nuclei were stained blue with DAPI; Acyl-CoA dehydrogenase short chain was stained magenta with Alexa Fluor® 647. Scale bar, 20 μ m.

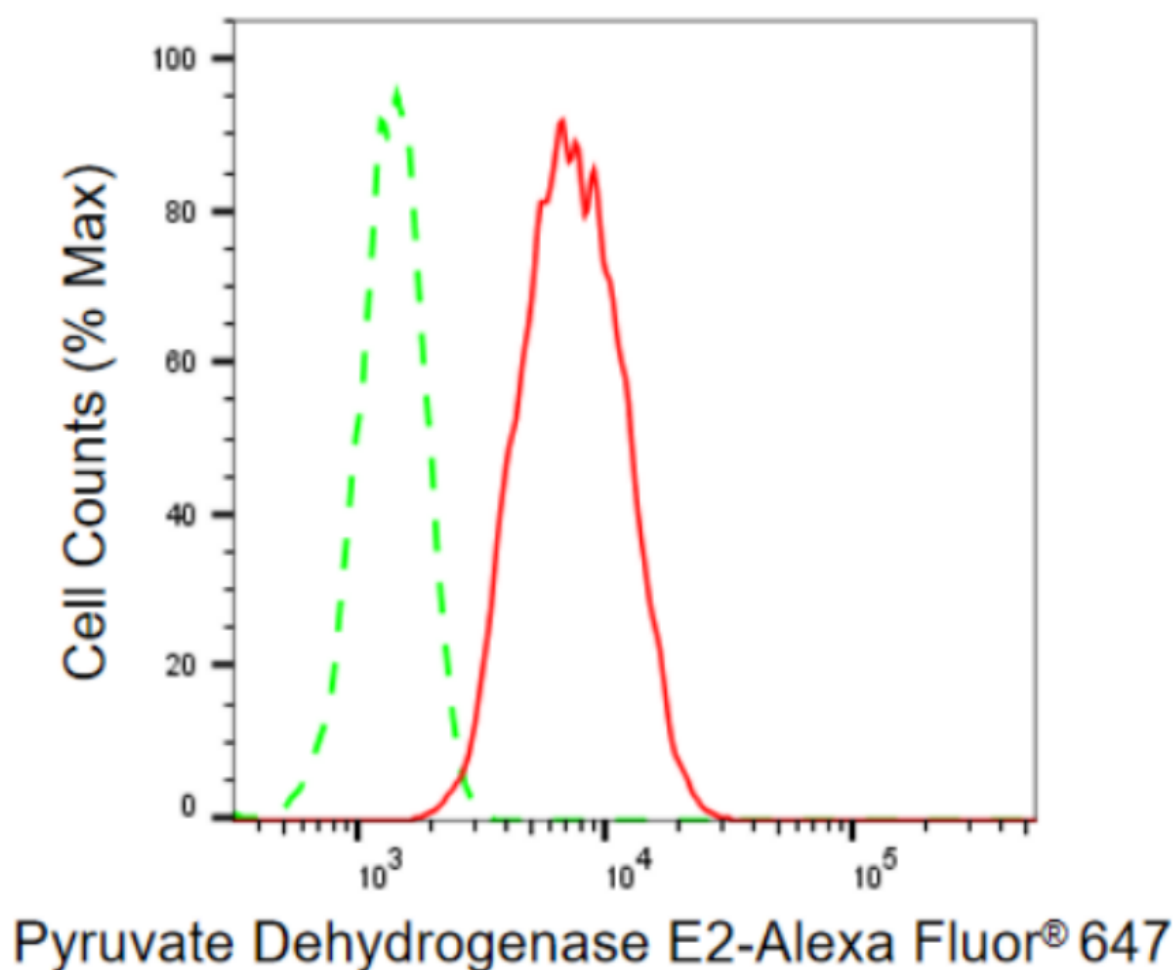
SUPPORT

SUPPORT@GENUINBIOTECH.COM
TEL: +1-540-855-7041

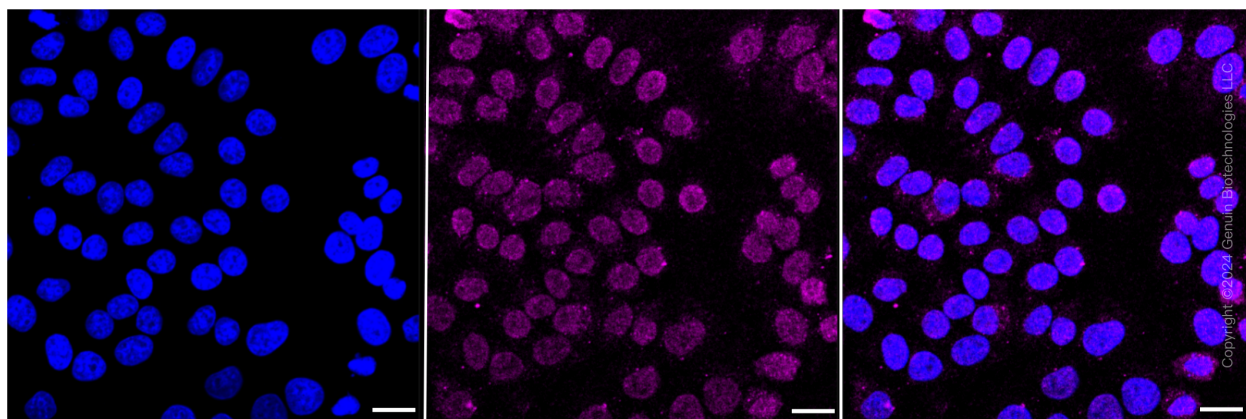
ORDERS

SALES@GENUINBIOTECH.COM
FAX: +1-540-855-7041

WWW.GENUINBIOTECH.COM



Flow cytometric analysis of Pyruvate Dehydrogenase E2 expression in HepG2 cells using Pyruvate Dehydrogenase E2 antibody (Cat#62417, 1:2,000). Green, isotype control; red, Pyruvate Dehydrogenase E2.



Immunocytochemical staining of HepG2 cells with Pyruvate Dehydrogenase E2 antibody (Cat#62417, 1:1,000). Nuclei were stained blue with DAPI; Pyruvate Dehydrogenase E2 was stained magenta with Alexa Fluor® 647. Images were taken using Leica stellaris 5. Protein

SUPPORT

SUPPORT@GENUINBIOTECH.COM
TEL: +1-540-855-7041

ORDERS

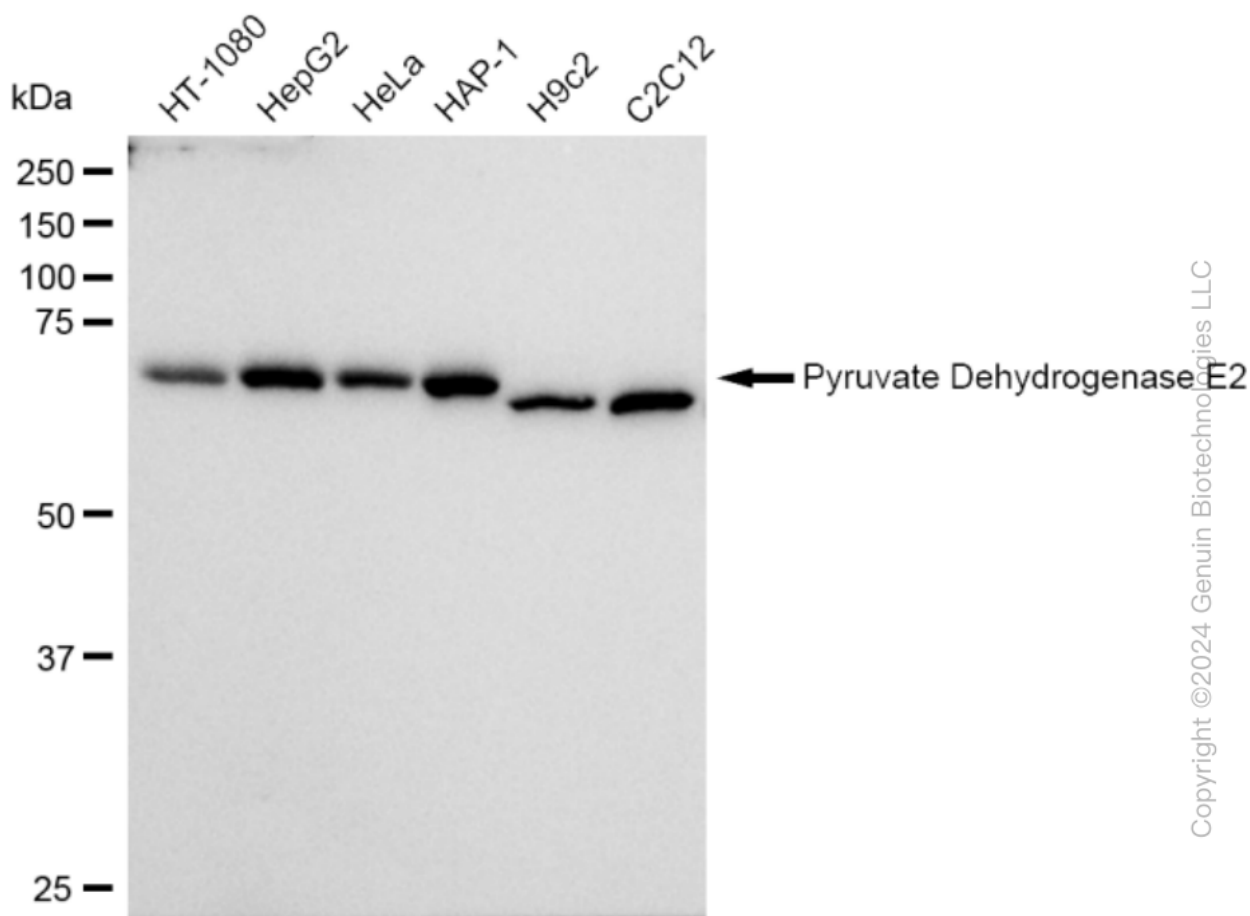
SALES@GENUINBIOTECH.COM
FAX: +1-540-855-7041

WWW.GENUINBIOTECH.COM

KD-Validated Anti-Pyruvate Dehydrogenase E2 Rabbit Monoclonal Antibody

PAGE 4

abundance based on laser Intensity and smart gain: Low. Scale bar: 20 μ m.



Copyright ©2024 Genuin Biotechnologies LLC

Western blotting analysis using anti-Pyruvate Dehydrogenase E2 antibody (Cat#62417). Total cell lysates (30 μ g) from various cell lines were loaded and separated by SDS-PAGE. The blot was incubated with anti-Pyruvate Dehydrogenase E2 antibody (Cat#62417, 1:5,000) and HRP-conjugated goat anti-rabbit secondary antibody (Cat#201, 1:50,000) respectively. Image was developed using FeQ™ ECL Substrate Kit (Cat#226).

SUPPORT

SUPPORT@GENUINBIOTECH.COM
TEL: +1-540-855-7041

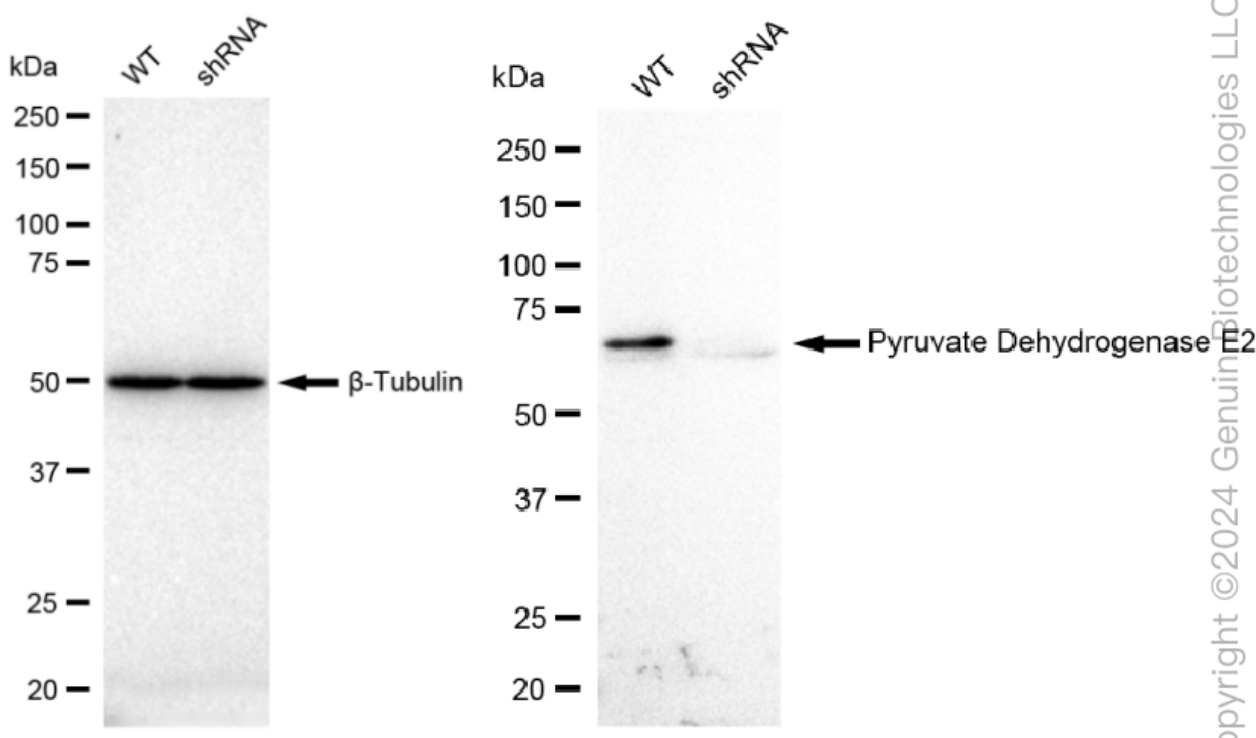
ORDERS

SALES@GENUINBIOTECH.COM
FAX: +1-540-855-7041

WWW.GENUINBIOTECH.COM

KD-Validated Anti-Pyruvate Dehydrogenase E2 Rabbit Monoclonal Antibody

PAGE 5



Western blotting analysis using anti-Pyruvate Dehydrogenase E2 antibody (Cat#62417). Pyruvate Dehydrogenase E2 expression in wild type (WT) and Pyruvate Dehydrogenase E2 shRNA knockdown (KD) HT-1080 cells with 30 μ g of total cell lysates. β -Tubulin serves as a loading control. The blot was incubated with anti-Pyruvate Dehydrogenase E2 antibody (Cat#62417, 1:5,000) and HRP-conjugated goat anti-rabbit secondary antibody (Cat#201, 1:20,000) respectively. Image was developed using FeQ™ ECL Substrate Kit (Cat#226).

SUPPORT

SUPPORT@GENUINBIOTECH.COM
TEL: +1-540-855-7041

ORDERS

SALES@GENUINBIOTECH.COM
FAX: +1-540-855-7041

WWW.GENUINBIOTECH.COM