

# KD-Validated Anti-RAVER2 Recombinant Rabbit Monoclonal Antibody



**Catalog #: 62432**

## Aliases

Ribonucleoprotein, PTB Binding 2; KIAA1579; Ribonucleoprotein PTB-Binding 2; Protein Raver-2; FLJ10770; Ribonucleoprotein, PTB-Binding 2

## Background

Gene Name: RAVR2

NCBI Gene Entry: [55225](#)

UniProt Entry: [Q9HCJ3](#)

## Application Information

Molecular Weight: Predicted, 74 kDa, observed, 74 kDa

Clonality: Rabbit monoclonal antibody

Clone ID: 24GB810

Species Reactivity: Human

Applications Tested: Western blotting (WB), flow cytometry (FCM), immunocytochemistry (IC)

## Immunogen

A synthesized peptide derived from human RAVR2

## Isotype

Rabbit IgG

## Storage Buffer

Supplied in PBS (pH 7.4) containing 50% glycerol, and 0.02% sodium azide.

## Storage

Store at -20 °C for one year.

## Recommended Dilutions

Western Blotting (WB): 1:1,000-1:5,000

Flow Cytometry (FCM): 1:2,000

Immunocytochemistry (IC): 1:100-1:1,000

**Note:** This product is for research use only.

## Validation Data

---

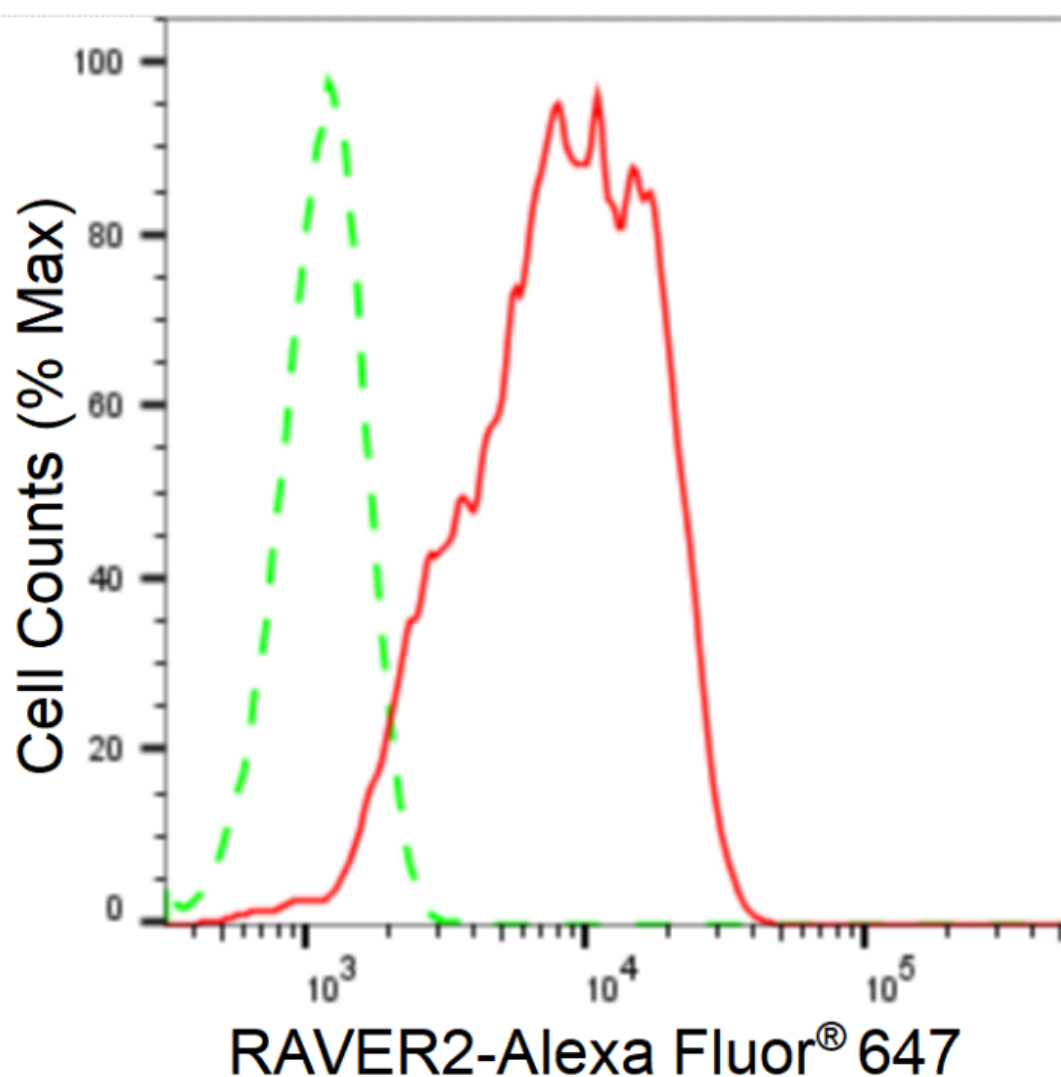
### SUPPORT

SUPPORT@GENUINBIOTECH.COM  
TEL: +1-540-855-7041

### ORDERS

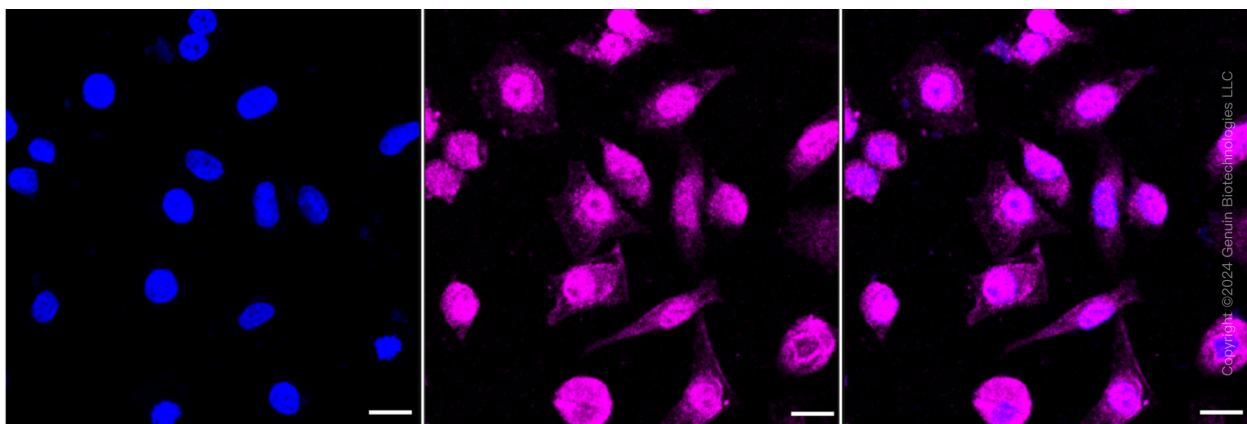
SALES@GENUINBIOTECH.COM  
FAX: +1-540-855-7041

[WWW.GENUINBIOTECH.COM](http://WWW.GENUINBIOTECH.COM)



Copyright ©2024 Genuin Biotechnologies LLC

Flow cytometric analysis of RAVER2 expression in HeLa cells using RAVER2 antibody (Cat#62432, 1:2,000). Green, isotype control; red, RAVER2.



Immunocytochemical staining of HeLa cells with anti-RAVER2 antibody (Cat#62432, 1:1,000).

**SUPPORT**

SUPPORT@GENUINBIOTECH.COM  
TEL: +1-540-855-7041

**ORDERS**

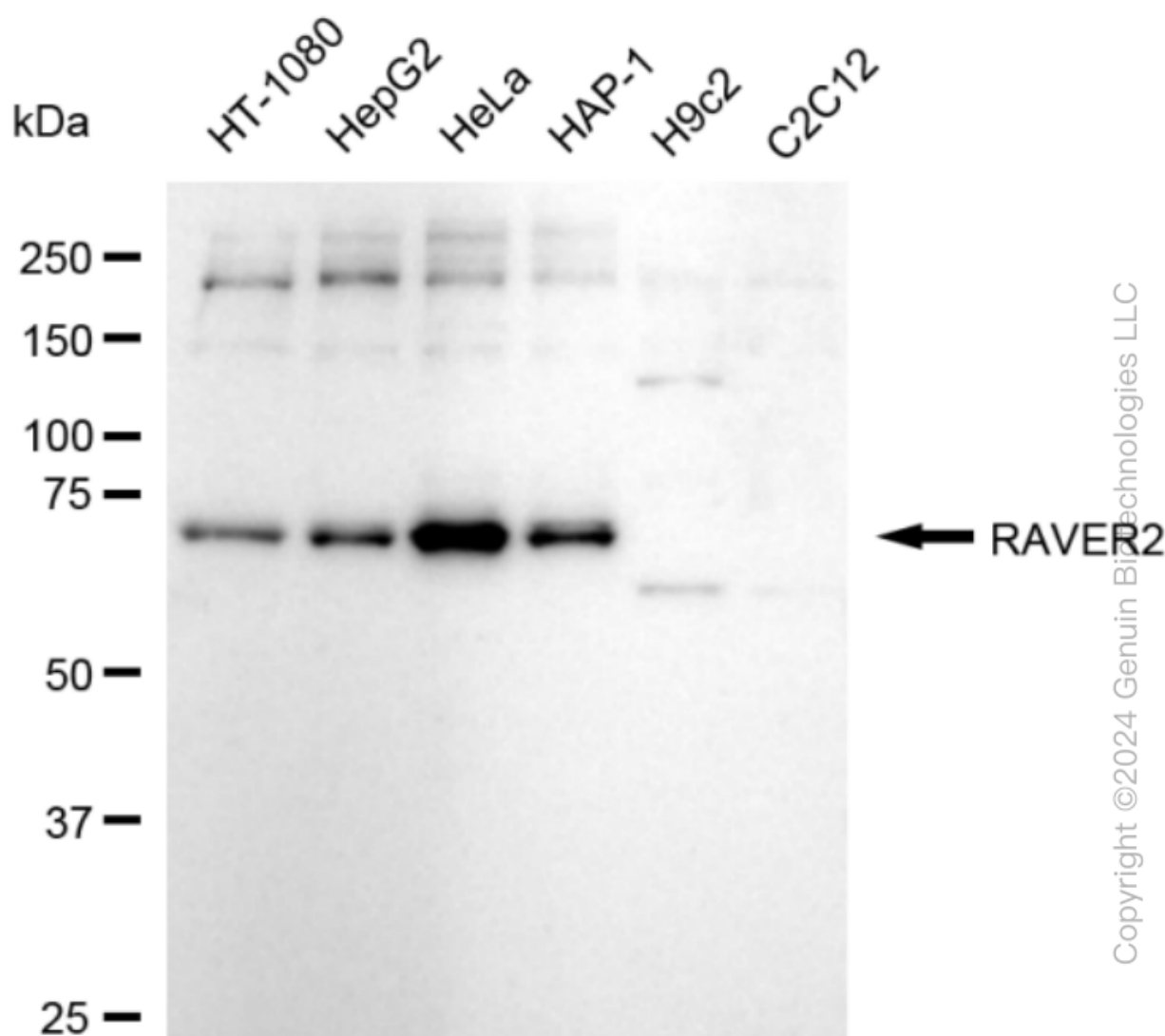
SALES@GENUINBIOTECH.COM  
FAX: +1-540-855-7041

**WWW.GENUINBIOTECH.COM**

## KD-Validated Anti-RAVER2 Recombinant Rabbit Monoclonal Antibody

PAGE 3

Nuclei were stained blue with DAPI; RAVER2 was stained magenta with Alexa Fluor® 647. Images were taken using Leica stellaris 5. Protein abundance based on laser Intensity and smart gain: Medium. Scale bar: 20  $\mu$ m.



Western blotting analysis using anti-RAVER2 antibody (Cat#62432). Total cell lysates (30  $\mu$ g) from various cell lines were loaded and separated by SDS-PAGE. The blot was incubated with anti-RAVER2 antibody (Cat#62432, 1:5,000) and HRP-conjugated goat anti-rabbit secondary antibody (Cat#201, 1:20,000) respectively. Image was developed using FeQ™ ECL Substrate Kit (Cat#226).

### SUPPORT

SUPPORT@GENUINBIOTECH.COM  
TEL: +1-540-855-7041

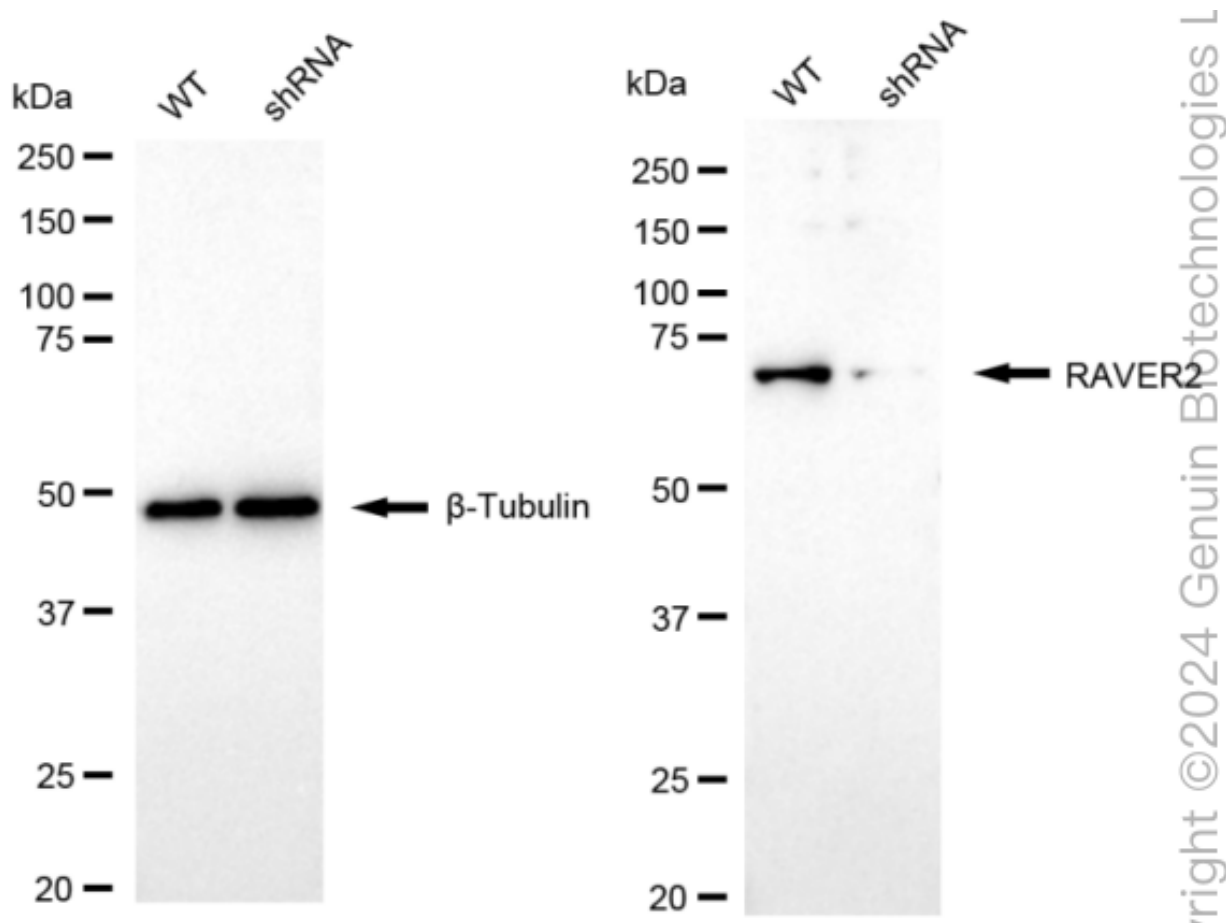
### ORDERS

SALES@GENUINBIOTECH.COM  
FAX: +1-540-855-7041

[WWW.GENUINBIOTECH.COM](http://WWW.GENUINBIOTECH.COM)

## KD-Validated Anti-RAVER2 Recombinant Rabbit Monoclonal Antibody

PAGE 4



Western blotting analysis using anti-RAVER2 antibody (Cat#62432). RAVER2 expression in wild type (WT) and RAVER2 shRNA knockdown (KD) HeLa cells with 20  $\mu$ g of total cell lysates.  $\beta$ -Tubulin serves as a loading control. The blot was incubated with anti-RAVER2 antibody (Cat#62432, 1:5,000) and HRP-conjugated goat anti-rabbit secondary antibody (Cat#201, 1:20,000) respectively. Image was developed using NaQ<sup>TM</sup> ECL Substrate Kit (Cat#716).

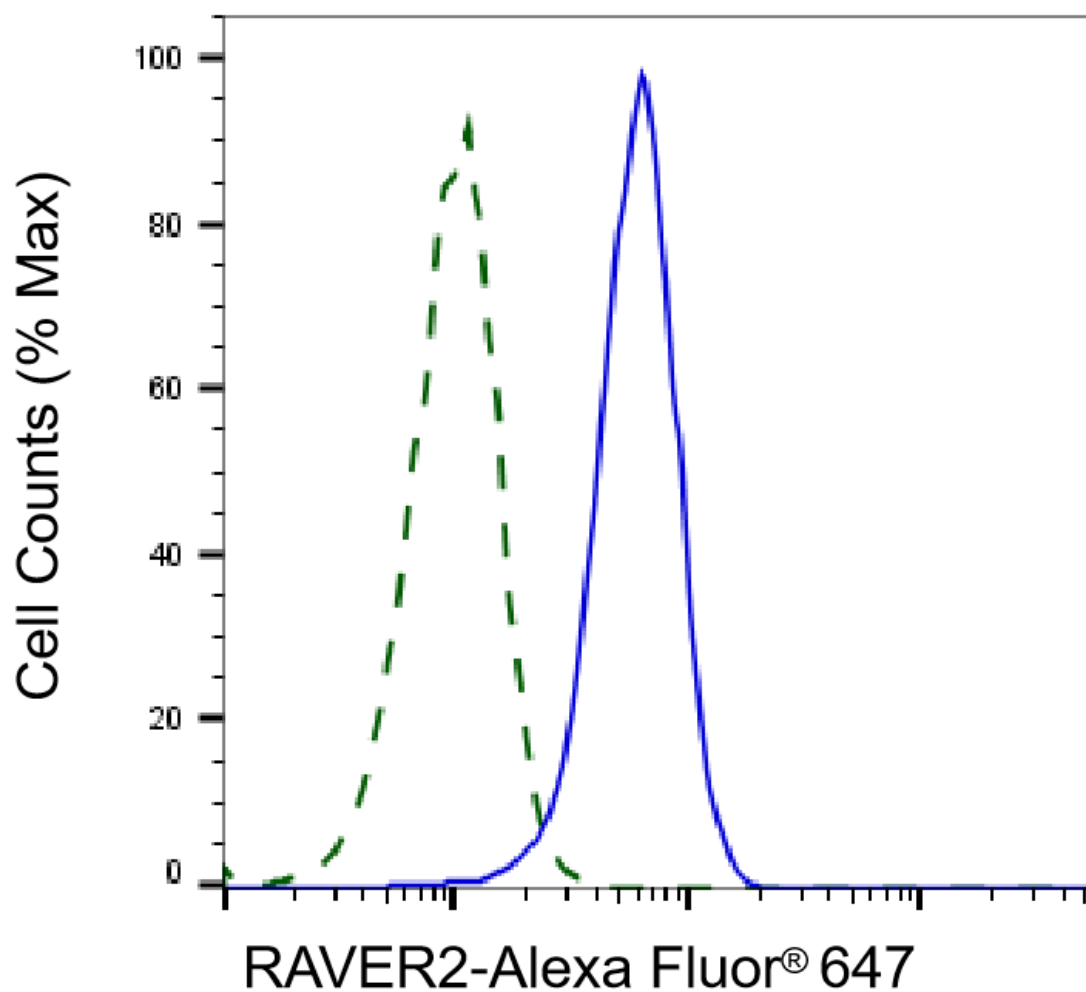
### SUPPORT

SUPPORT@GENUINBIOTECH.COM  
TEL: +1-540-855-7041

### ORDERS

SALES@GENUINBIOTECH.COM  
FAX: +1-540-855-7041

WWW.GENUINBIOTECH.COM



Copyright ©2025 Genuin Biotechnologies LLC

Validation of RAVeR2 knockdown using flow cytometry. Wild-type(WT, Blue) and knockdown(KD, Green) HeLa cells were stained with anti-RAVeR2 antibody (Cat#62432, 1:2,000) and analyzed using BD flow cytometer.