

KD-Validated Anti-Rab4 Recombinant Rabbit Monoclonal Antibody



Catalog #: 62435

Aliases

RAB4A, Member RAS Oncogene Family; HRES-1/RAB4; RAB4; Ras-Related Protein Rab-4A; HTLV-1 Related Endogenous Sequence; EC 3.6.5.2; HRES-1; HRES1

Background

Gene Name: RAB4A

NCBI Gene Entry: [5867](#)

UniProt Entry: [P20338](#)

Application Information

Molecular Weight: Predicted, 24 kDa, observed, 24 kDa

Clonality: Rabbit monoclonal antibody

Clone ID: 24GB825

Species Reactivity: Human, mouse, rat

Applications Tested: Western blotting (WB), flow cytometry (FCM), immunocytochemistry (IC)

Immunogen

A synthesized peptide derived from human Rab4

Isotype

Rabbit IgG

Storage Buffer

Supplied in PBS (pH 7.4) containing 50% glycerol, and 0.02% sodium azide.

Storage

Store at -20 °C for one year.

Recommended Dilutions

Western Blotting (WB): 1:1,000-1:5,000

Flow Cytometry (FCM): 1:2,000

Immunocytochemistry (IC): 1:100-1:1,000

Note: This product is for research use only.

Validation Data

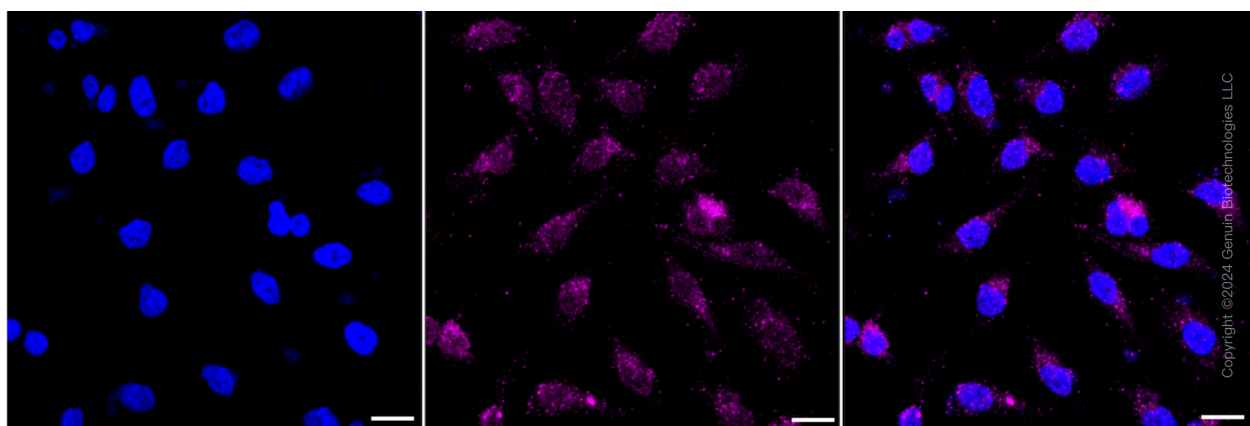
SUPPORT

SUPPORT@GENUINBIOTECH.COM
TEL: +1-540-855-7041

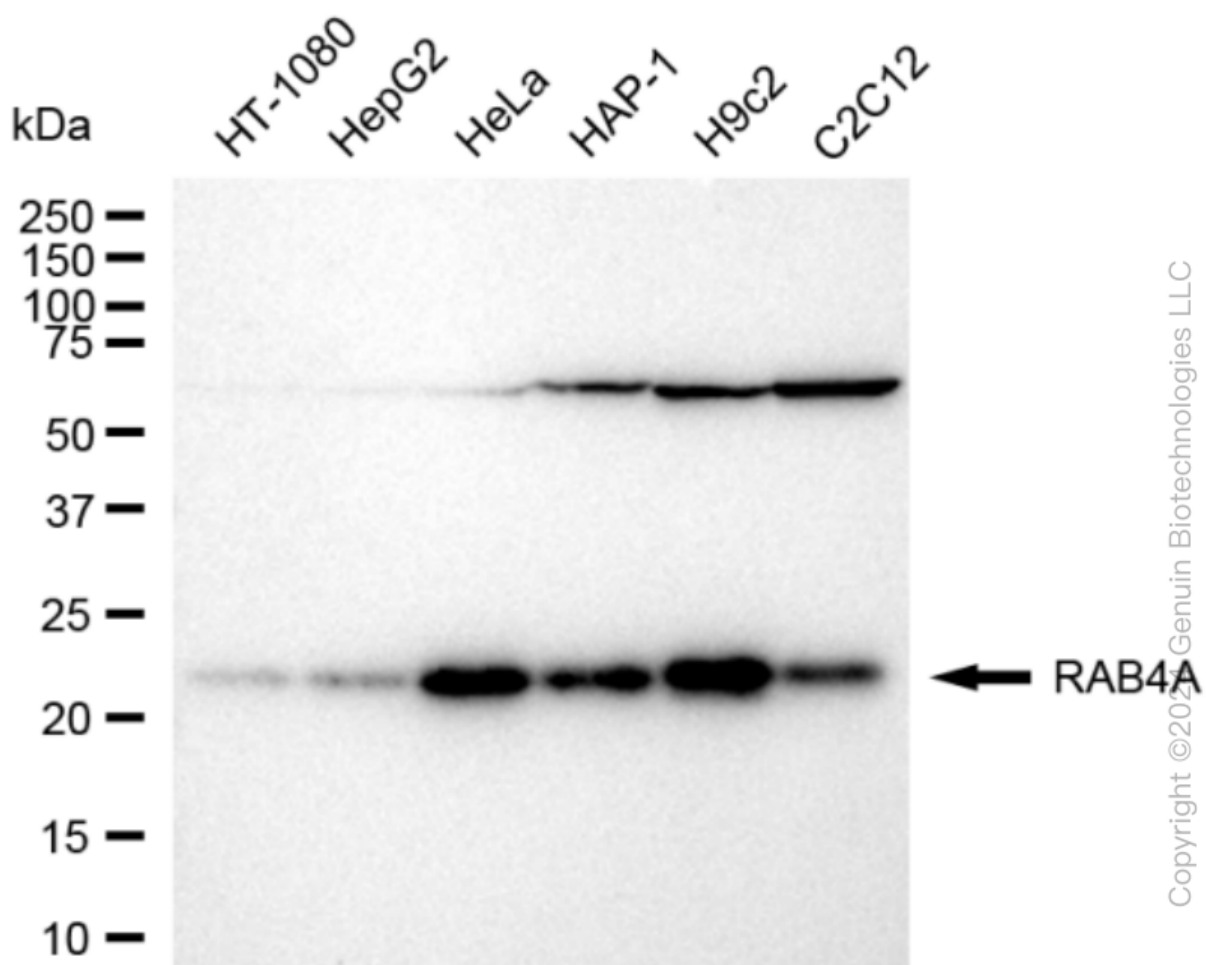
ORDERS

SALES@GENUINBIOTECH.COM
FAX: +1-540-855-7041

WWW.GENUINBIOTECH.COM



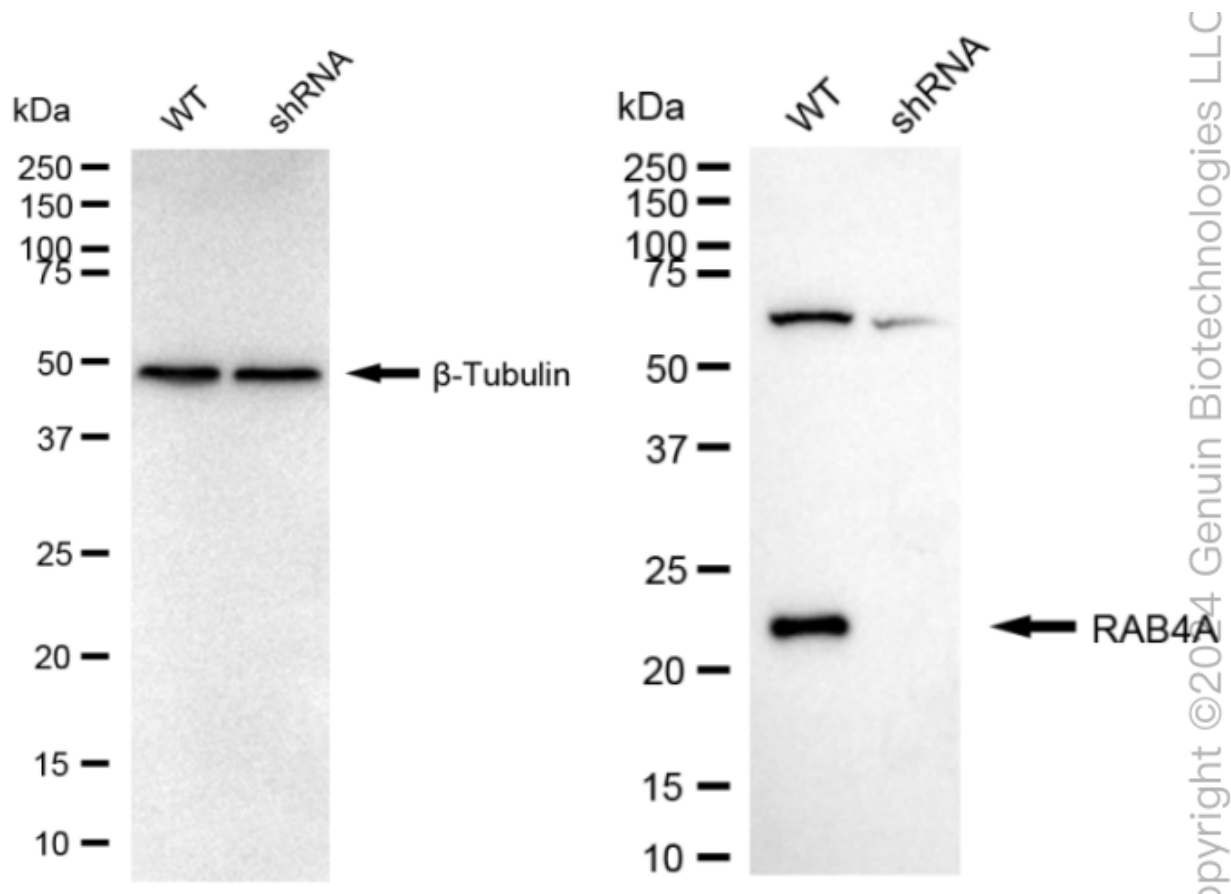
Immunocytochemical staining of HeLa cells with anti-RAB4A antibody (Cat#62435, 1:1,000). Nuclei were stained blue with DAPI; RAB4A was stained magenta with Alexa Fluor® 647. Images were taken using Leica stellaris 5. Protein abundance based on laser Intensity and smart gain: Medium. Scale bar: 20 μ m.



KD-Validated Anti-Rab4 Recombinant Rabbit Monoclonal Antibody

PAGE 3

Western blotting analysis using anti-RAB4A antibody (Cat#62435). Total cell lysates (30 µg) from various cell lines were loaded and separated by SDS-PAGE. The blot was incubated with anti-RAB4A antibody (Cat#62435, 1:5,000) and HRP-conjugated goat anti-rabbit secondary antibody (Cat#201, 1:20,000) respectively. Image was developed using FeQ™ ECL Substrate Kit (Cat#226).



Western blotting analysis using anti-RAB4A antibody (Cat#62435). RAB4A expression in wild type (WT) and RAB4A shRNA knockdown (KD) HeLa cells with 20 µg of total cell lysates. β-Tubulin serves as a loading control. The blot was incubated with anti-RAB4A antibody (Cat#62435, 1:5,000) and HRP-conjugated goat anti-rabbit secondary antibody (Cat#201, 1:20,000) respectively. Image was developed using NaQ™ ECL Substrate Kit (Cat#716).

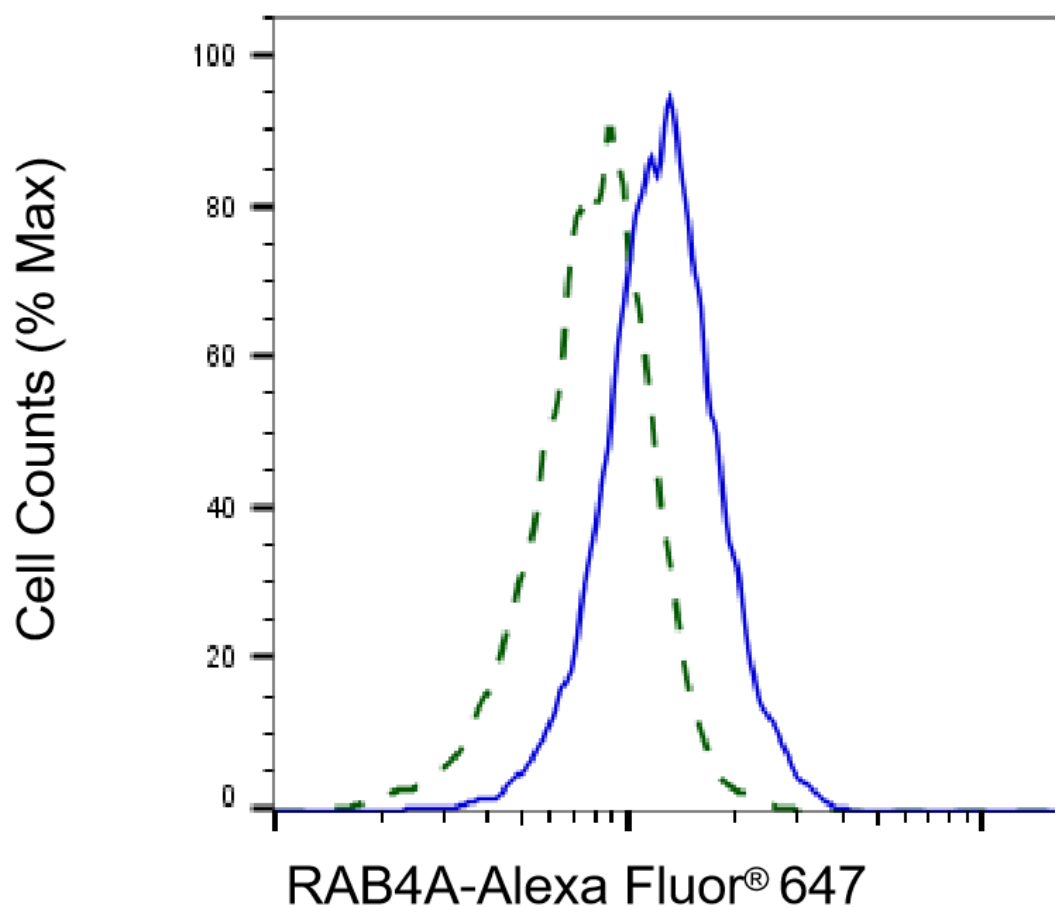
SUPPORT

SUPPORT@GENUINBIOTECH.COM
TEL: +1-540-855-7041

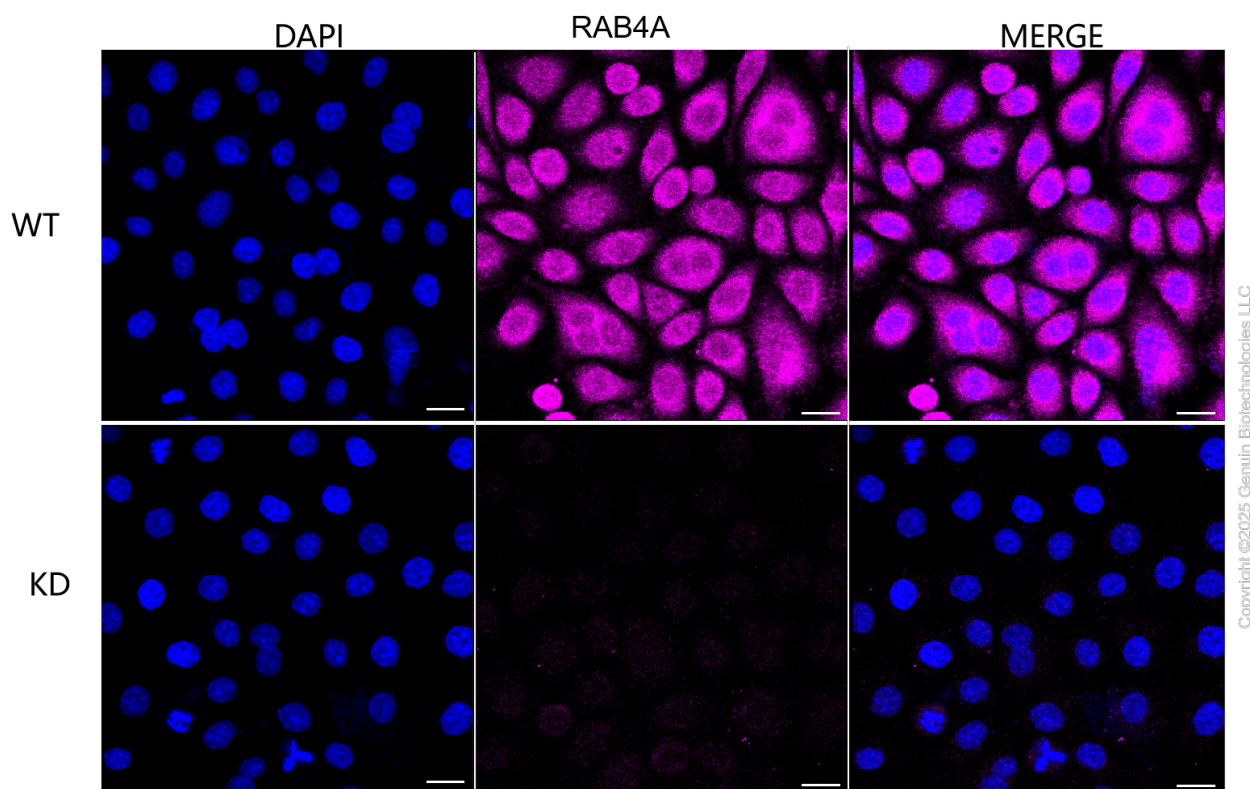
ORDERS

SALES@GENUINBIOTECH.COM
FAX: +1-540-855-7041

WWW.GENUINBIOTECH.COM



Validation of RAB4A knockdown using flow cytometry. Wild-type(WT, Blue) and knockdown(KD, Green) HeLa cells were stained with anti-RAB4A antibody (Cat#62435, 1:2,000) and analyzed using BD flow cytometer.



Immunocytochemical staining of HeLa cells using anti-RAB4A antibody (Cat#62435, 1:1,000), Top panel: wild-type (WT); Bottom panel: Adiponectin receptor 1 shRNA knockdown (KD). Nuclei were stained blue with DAPI; RAB4A was stained magenta with Alexa Fluor® 647. Scale bar, 20 μ m. Permeabilization: Triton.