

# KD-Validated Anti-PRMT5 Recombinant Rabbit Monoclonal Antibody



**Catalog #: 62439**

## Aliases

Protein Arginine Methyltransferase 5; SKB1Hs; HRMT1L5; SKB1; Histone-Arginine N-Methyltransferase PRMT5; Protein Arginine N-Methyltransferase 5; Shk1 Kinase-Binding Protein 1 Homolog; 72 KDa ICln-Binding Protein; Jak-Binding Protein 1; SKB1 Homolog; IBP72; JBP1; HMT1 HnRNP Methyltransferase-Like 5; Skb1 (S. Pombe) Homolog; SKB1 Homolog (S. Pombe); EC 2.1.1.320; HSL7

## Background

Gene Name: PRMT5

NCBI Gene Entry: [10419](#)

UniProt Entry: [O14744](#)

## Application Information

Molecular Weight: Predicted, 73 kDa, observed, 73 kDa

Clonality: Rabbit monoclonal antibody

Clone ID: 24GB845

Species Reactivity: Human, mouse, rat

Applications Tested: Western blotting (WB), flow cytometry (FCM), immunocytochemistry (IC)

## Immunogen

A synthesized peptide derived from human PRMT5

## Isotype

Rabbit IgG

## Storage Buffer

Supplied in PBS (pH 7.4) containing 50% glycerol, and 0.02% sodium azide.

## Storage

Store at -20 °C for one year.

## Recommended Dilutions

Western Blotting (WB): 1:2,000-1:10,000

Flow Cytometry (FCM): 1:2,000

Immunocytochemistry (IC): 1:100-1:1,000

---

### SUPPORT

SUPPORT@GENUINBIOTECH.COM  
TEL: +1-540-855-7041

### ORDERS

SALES@GENUINBIOTECH.COM  
FAX: +1-540-855-7041

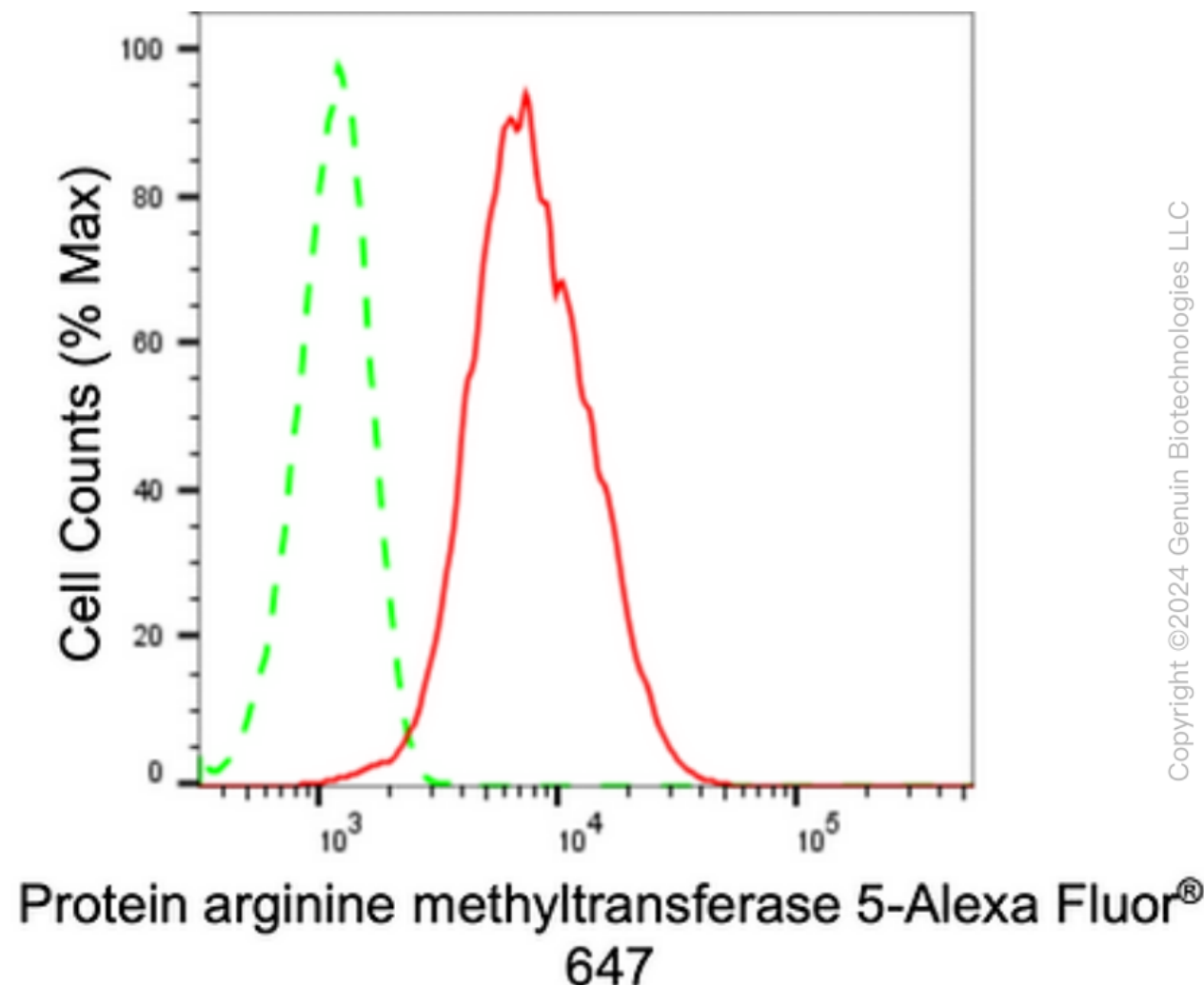
[WWW.GENUINBIOTECH.COM](http://WWW.GENUINBIOTECH.COM)

## KD-Validated Anti-PRMT5 Recombinant Rabbit Monoclonal Antibody

PAGE 2

**Note:** This product is for research use only.

### Validation Data



Flow cytometric analysis of Protein arginine methyltransferase 5 expression in HeLa cells using Protein arginine methyltransferase 5 antibody (Cat#62439, 1:2,000). Green, isotype control; red, Protein arginine methyltransferase 5.

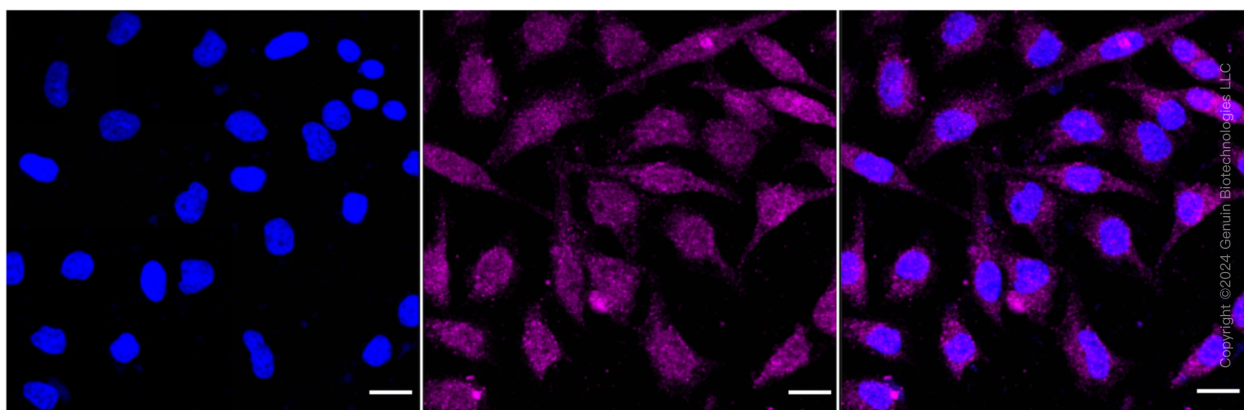
#### SUPPORT

SUPPORT@GENUINBIOTECH.COM  
TEL: +1-540-855-7041

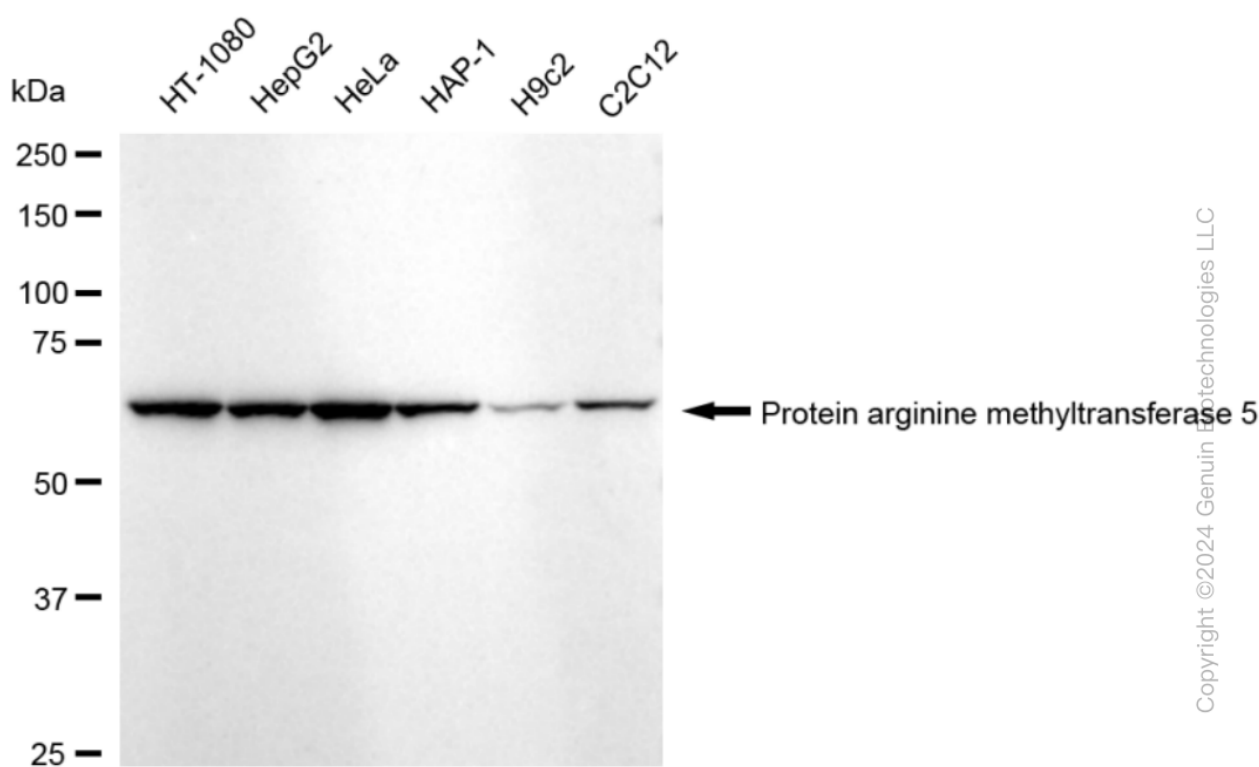
#### ORDERS

SALES@GENUINBIOTECH.COM  
FAX: +1-540-855-7041

[WWW.GENUINBIOTECH.COM](http://WWW.GENUINBIOTECH.COM)



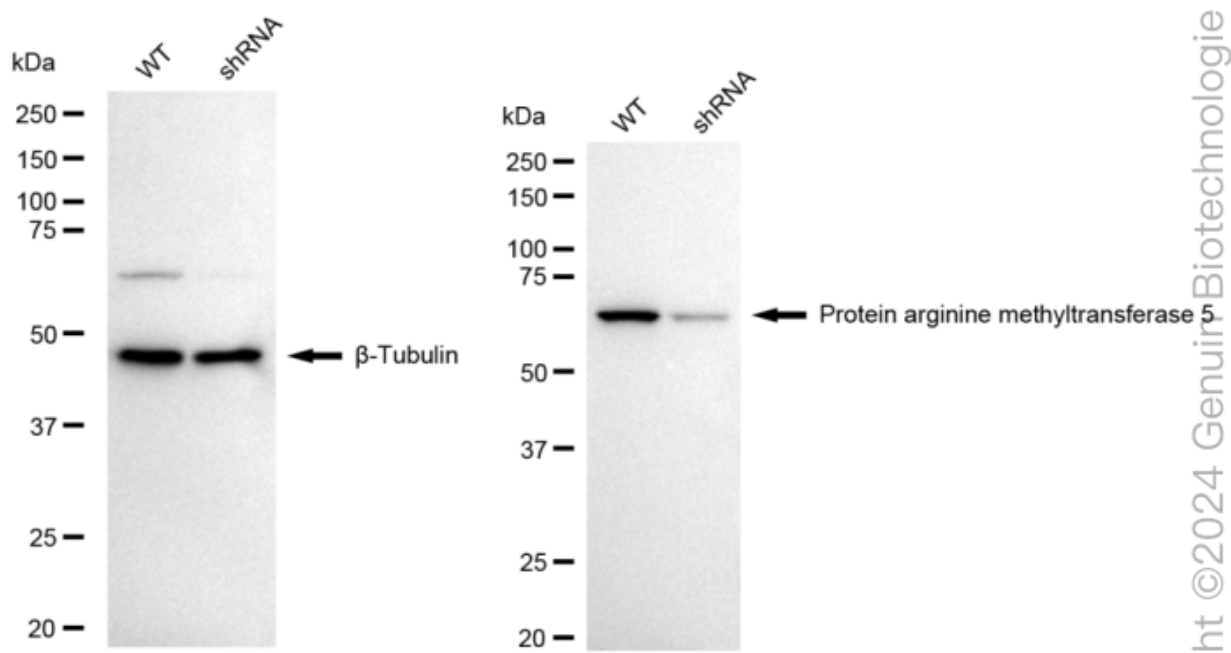
Immunocytochemical staining of HeLa cells with anti-Protein arginine methyltransferase 5 antibody (Cat#62439, 1:1,000). Nuclei were stained blue with DAPI; Protein arginine methyltransferase 5 was stained magenta with Alexa Fluor® 647. Images were taken using Leica stellaris 5. Protein abundance based on laser Intensity and smart gain: Medium. Scale bar: 20  $\mu$ m.



Western blotting analysis using anti-Protein arginine methyltransferase 5 antibody (Cat#62439). Total cell lysates (30  $\mu$ g) from various cell lines were loaded and separated by SDS-PAGE. The blot was incubated with anti-Protein arginine methyltransferase 5 antibody (Cat#62439, 1:10,000) and HRP-conjugated goat anti-rabbit secondary antibody (Cat#201, 1:20,000) respectively. Image was developed using FeQ™ ECL Substrate Kit (Cat#226).

## KD-Validated Anti-PRMT5 Recombinant Rabbit Monoclonal Antibody

PAGE 4



Western blotting analysis using anti-protein arginine methyltransferase 5 antibody (Cat#62439). Protein arginine methyltransferase 5 expression in wild-type (WT) and protein arginine methyltransferase 5 (PRMT5) shRNA knockdown (KD) HeLa cells with 20  $\mu$ g of total cell lysates.  $\beta$ -Tubulin serves as a loading control. The blot was incubated with anti-protein arginine methyltransferase 5 antibody (Cat#62439, 1:10,000) and HRP-conjugated goat anti-rabbit secondary antibody (Cat#201, 1:20,000) respectively. Image was developed using NaQ™ ECL Substrate Kit (Cat#716).

### SUPPORT

SUPPORT@GENUINBIOTECH.COM  
TEL: +1-540-855-7041

### ORDERS

SALES@GENUINBIOTECH.COM  
FAX: +1-540-855-7041

[WWW.GENUINBIOTECH.COM](http://WWW.GENUINBIOTECH.COM)