

KD-Validated Anti-RalA Binding Protein 1 Recombinant Rabbit Monoclonal Antibody



Catalog #: 62445

Aliases

RalA Binding Protein 1; RLIP76; RIP1; Dinitrophenyl S-Glutathione ATPase; 76 KDa Ral-Interacting Protein; Ral-Interacting Protein 1; RalA-Binding Protein 1; DNP-SG ATPase; RLIP1; RIP; EC 7.6.2.2; EC 7.6.2.3; RalBP1; RLIP

Background

Gene Name: RALBP1

NCBI Gene Entry: [10928](#)

UniProt Entry: [Q15311](#)

Application Information

Molecular Weight: Predicted, 76 kDa, observed, 95 kDa

Clonality: Rabbit monoclonal antibody

Clone ID: 24GB875

Species Reactivity: Human, mouse, rat

Applications Tested: Western blotting (WB), flow cytometry (FCM), immunocytochemistry (IC)

Immunogen

A synthesized peptide derived from human RALBP1

Isotype

Rabbit IgG

Storage Buffer

Supplied in PBS (pH 7.4) containing 50% glycerol, and 0.02% sodium azide.

Storage

Store at -20 °C for one year.

Recommended Dilutions

Western Blotting (WB): 1:2000-1:10,000

Flow Cytometry (FCM): 1:2,000

Immunocytochemistry (IC): 1:100-1:1,000

Note: This product is for research use only.

SUPPORT

SUPPORT@GENUINBIOTECH.COM
TEL: +1-540-855-7041

ORDERS

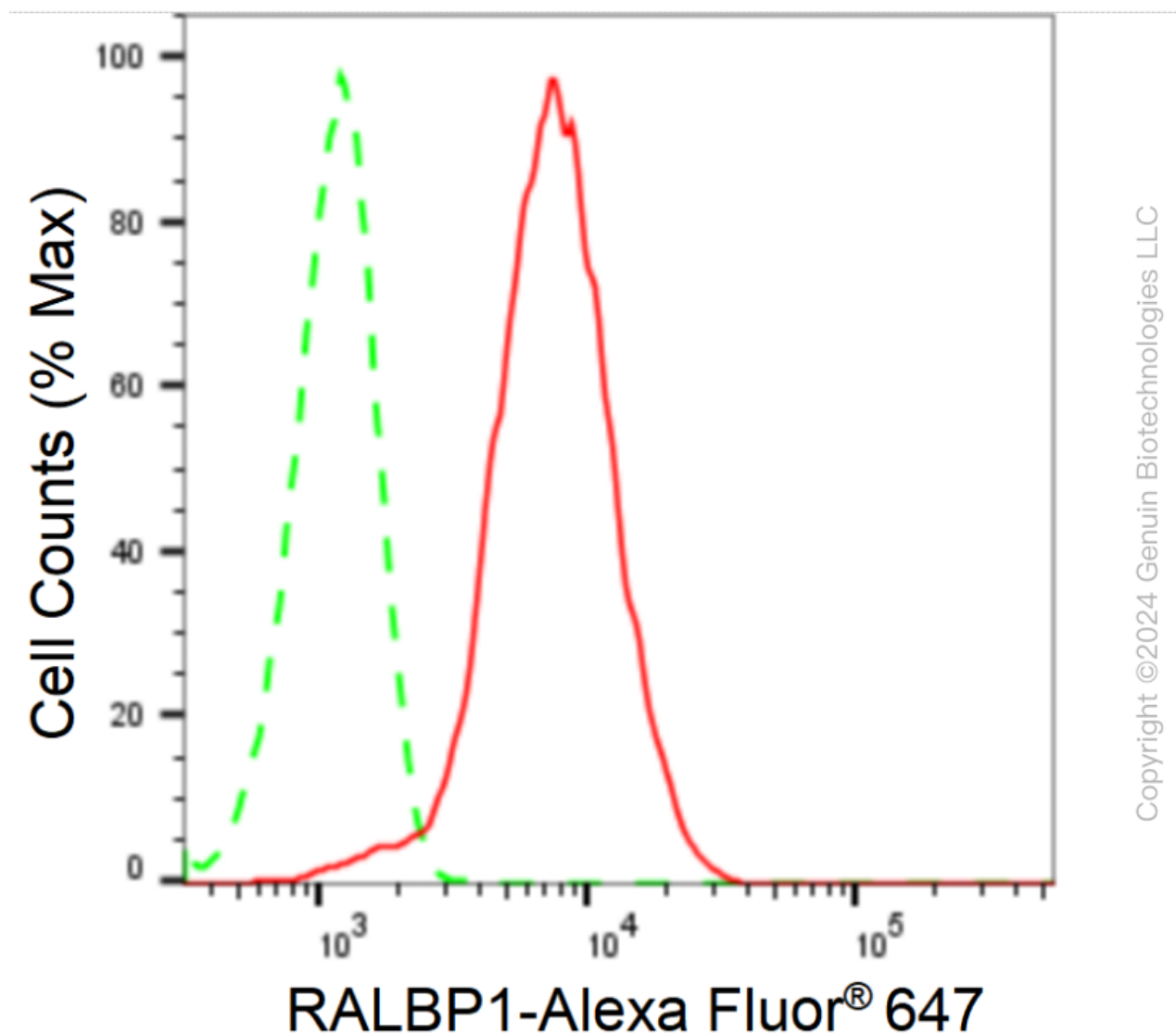
SALES@GENUINBIOTECH.COM
FAX: +1-540-855-7041

WWW.GENUINBIOTECH.COM

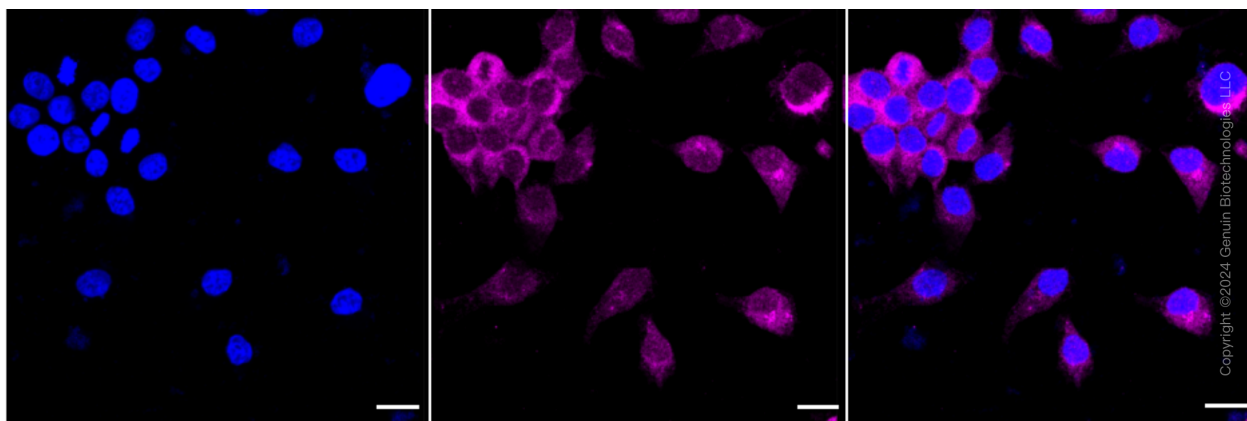
KD-Validated Anti-RalA Binding Protein 1 Recombinant Rabbit Monoclonal Antibody

PAGE 2

Validation Data



Flow cytometric analysis of RALBP1 expression in HeLa cells using RALBP1 antibody (Cat#62445, 1:2,000). Green, isotype control; red, RALBP1.



SUPPORT

SUPPORT@GENUINBIOTECH.COM
TEL: +1-540-855-7041

ORDERS

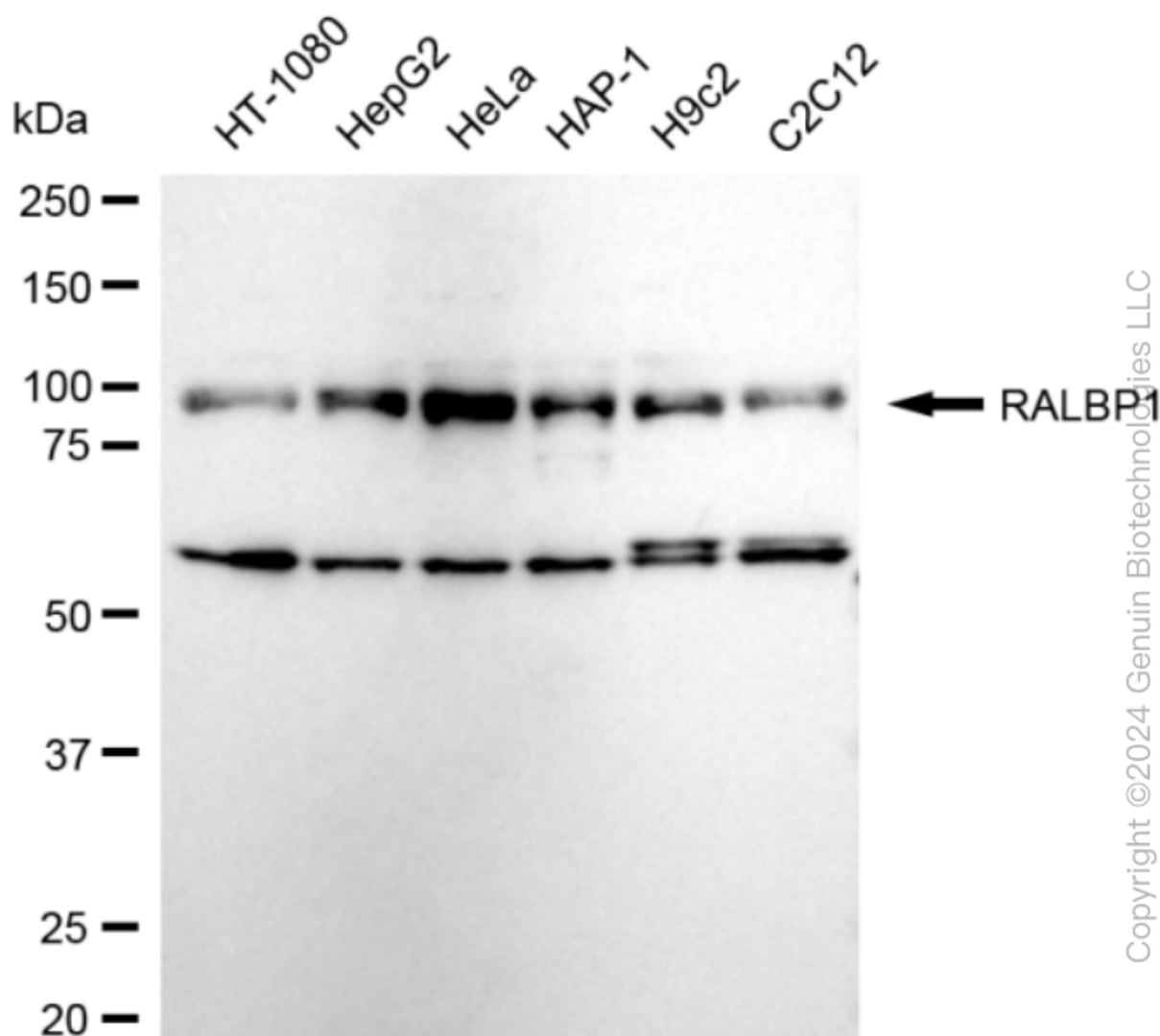
SALES@GENUINBIOTECH.COM
FAX: +1-540-855-7041

WWW.GENUINBIOTECH.COM

KD-Validated Anti-RalA Binding Protein 1 Recombinant Rabbit Monoclonal Antibody

PAGE 3

Immunocytochemical staining of HeLa cells with anti-RALBP1 antibody (Cat#62445, 1:1,000). Nuclei were stained blue with DAPI; RALBP1 was stained magenta with Alexa Fluor® 647. Images were taken using Leica stellaris 5. Protein abundance based on laser Intensity and smart gain: Medium. Scale bar: 20 μ m.



Western blotting analysis using anti-RALBP1 antibody (Cat#62445). Total cell lysates (30 μ g) from various cell lines were loaded and separated by SDS-PAGE. The blot was incubated with anti-RALBP1 antibody (Cat#62445, 1:10,000) and HRP-conjugated goat anti-rabbit secondary antibody (Cat#201, 1:20,000) respectively. Image was developed using FeQ™ ECL Substrate Kit (Cat#226).

SUPPORT

SUPPORT@GENUINBIOTECH.COM
TEL: +1-540-855-7041

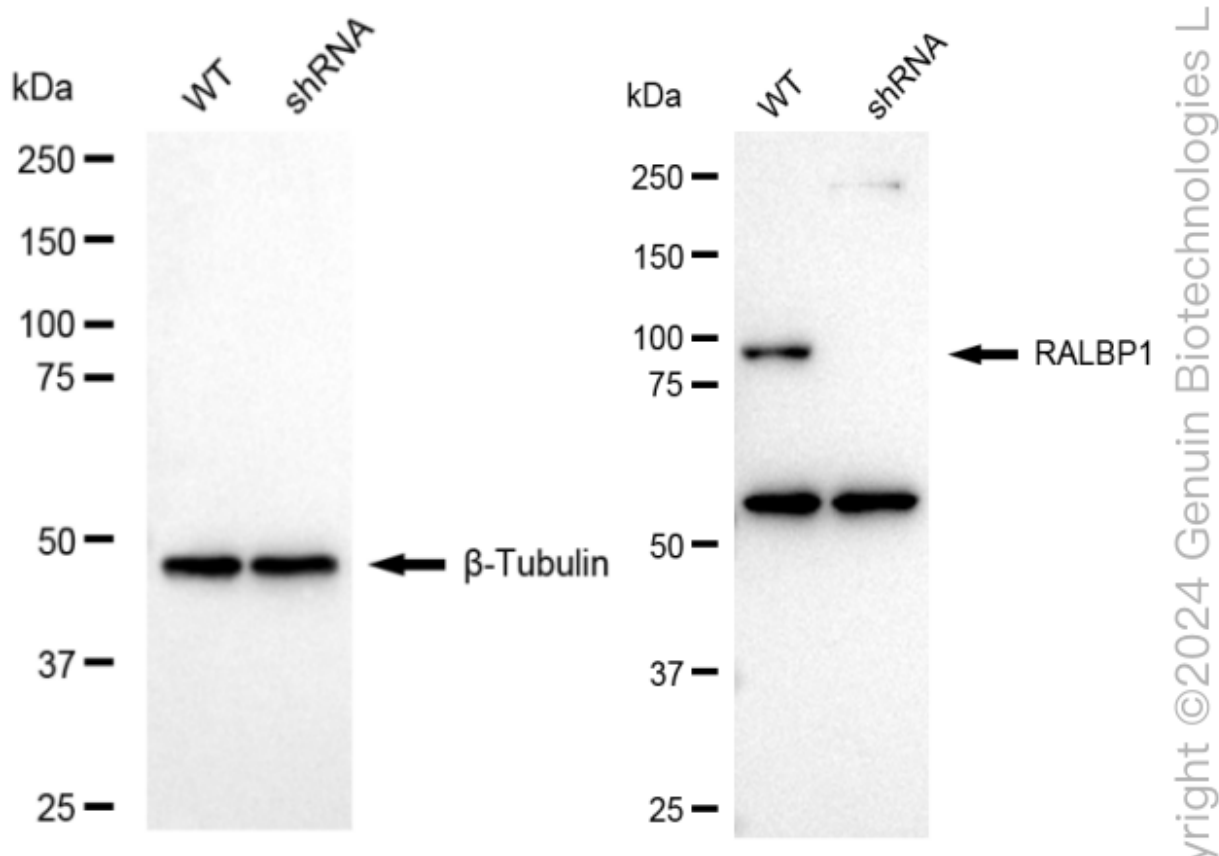
ORDERS

SALES@GENUINBIOTECH.COM
FAX: +1-540-855-7041

WWW.GENUINBIOTECH.COM

KD-Validated Anti-RalA Binding Protein 1 Recombinant Rabbit Monoclonal Antibody

PAGE 4



Western blotting analysis using anti-RALBP1 antibody (Cat#62445). RALBP1 expression in wild type (WT) and RALBP1 shRNA knockdown (KD) HeLa cells with 20 μ g of total cell lysates. β -Tubulin serves as a loading control. The blot was incubated with anti-RALBP1 antibody (Cat#62445, 1:10,000) and HRP-conjugated goat anti-rabbit secondary antibody (Cat#201, 1:20,000) respectively. Image was developed using NaQ™ ECL Substrate Kit (Cat#716).

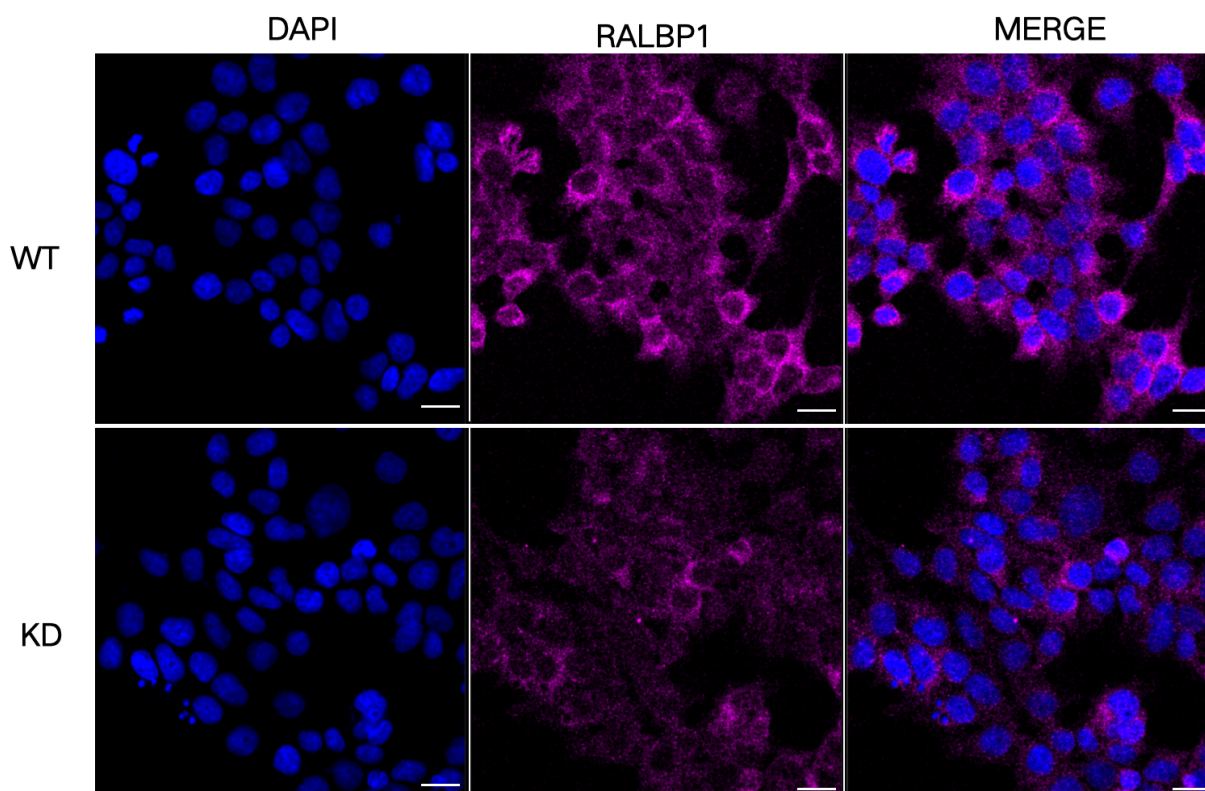
SUPPORT

SUPPORT@GENUINBIOTECH.COM
TEL: +1-540-855-7041

ORDERS

SALES@GENUINBIOTECH.COM
FAX: +1-540-855-7041

WWW.GENUINBIOTECH.COM



Copyright ©2025 Genuin Biotechnologies LLC

Immunocytochemical staining of HeLa cells using anti-RALBP1 antibody (Cat#62445, 1:1,000), Top panel: wild-type (WT); Bottom panel: RALBP1 shRNA knockdown (KD). Nuclei were stained blue with DAPI; Acyl-CoA dehydrogenase short chain was stained magenta with Alexa Fluor® 647. Scale bar, 20 μ m.