

KD-Validated Anti-Phospho-Paxillin (Y118) Recombinant Rabbit Monoclonal Antibody



Catalog #: 62450

Aliases

Paxillin; Testicular Tissue Protein Li 134

Background

Gene Name: PXN

NCBI Gene Entry: [5829](#)

UniProt Entry: [P49023](#)

Application Information

Molecular Weight: Predicted, 65 kDa, observed, 68 kDa

Clonality: Rabbit monoclonal antibody

Clone ID: 24GB900

Species Reactivity: Human, mouse, rat

Applications Tested: Western blotting (WB), immunocytochemistry (IC)

Immunogen

A synthesized peptide derived from human Paxillin

Isotype

Rabbit IgG

Storage Buffer

Supplied in PBS (pH 7.4) containing 50% glycerol, and 0.02% sodium azide.

Storage

Store at -20 °C for one year.

Recommended Dilutions

Western Blotting (WB): 1:1,000-1:5,000

Immunocytochemistry (IC): 1:100-1:1,000

Note: This product is for research use only.

Validation Data

SUPPORT

SUPPORT@GENUINBIOTECH.COM
TEL: +1-540-855-7041

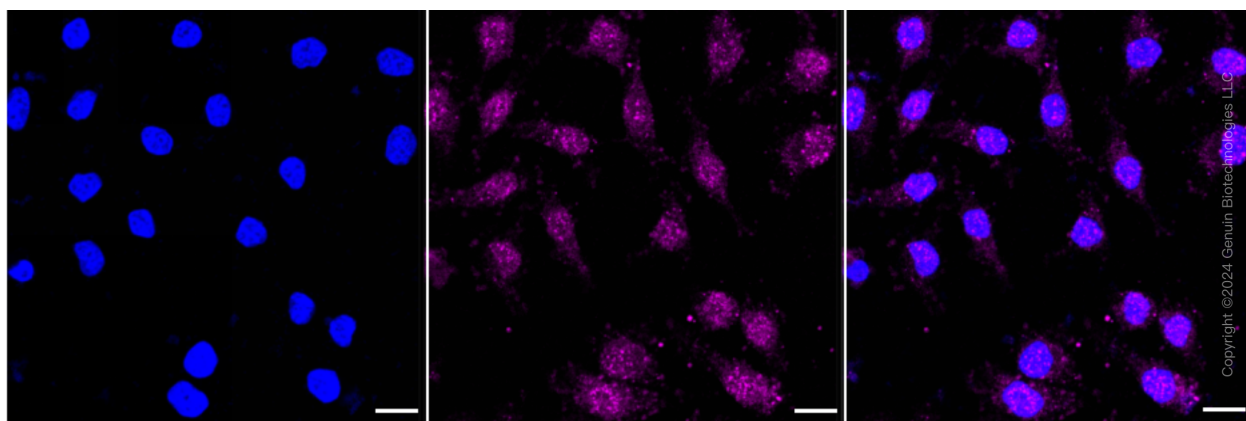
ORDERS

SALES@GENUINBIOTECH.COM
FAX: +1-540-855-7041

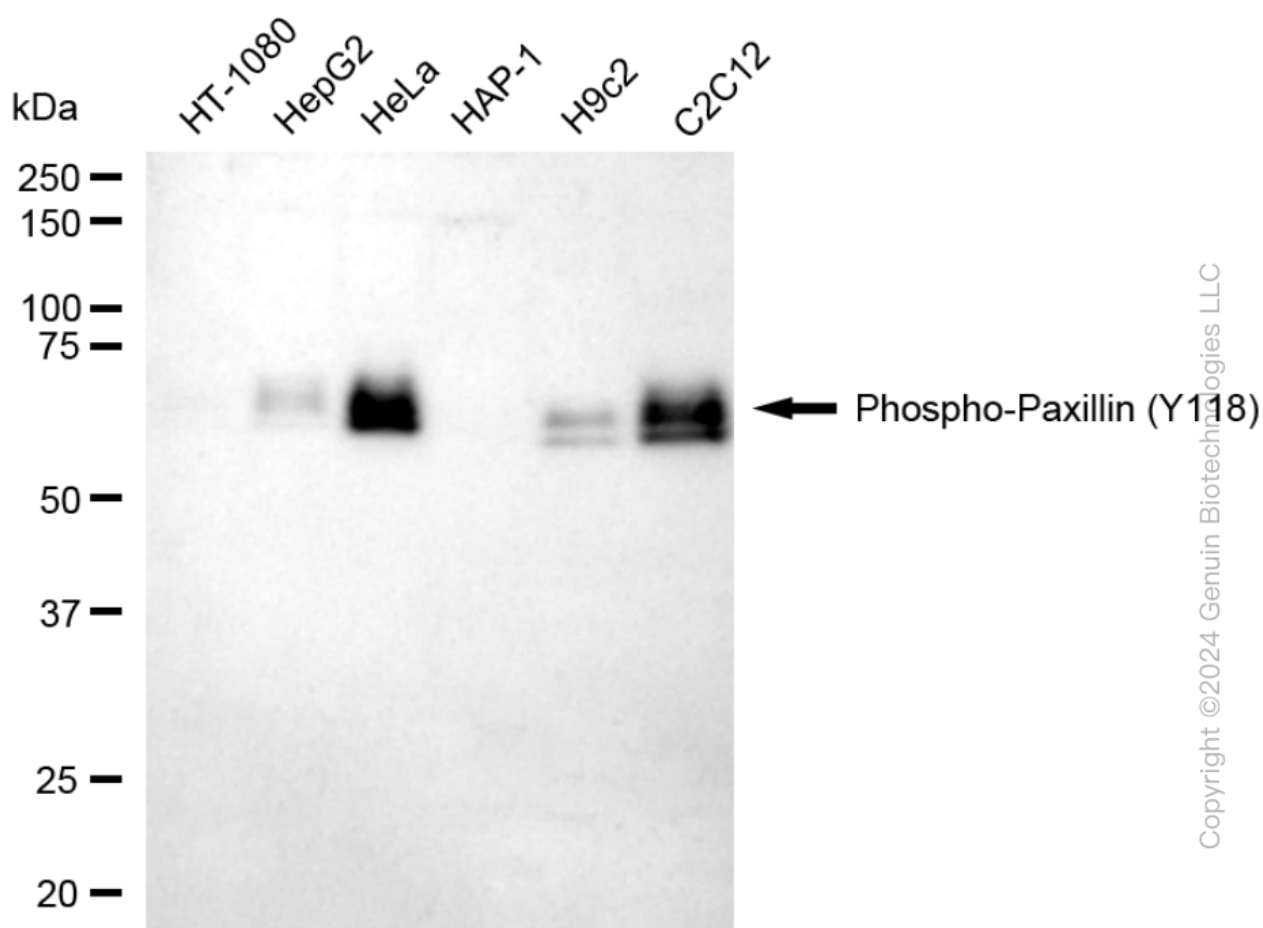
WWW.GENUINBIOTECH.COM

KD-Validated Anti-Phospho-Paxillin (Y118) Recombinant Rabbit Monoclonal Antibody

PAGE 2



Immunocytochemical staining of HeLa cells with anti-Phospho-Paxillin (Y118) antibody (Cat#62450, 1:1,000). Nuclei were stained blue with DAPI; Phospho-Paxillin (Y118) was stained magenta with Alexa Fluor® 647. Images were taken using Leica stellaris 5. Protein abundance based on laser Intensity and smart gain: Low. Scale bar: 20 μ m.



Western blotting analysis using anti-Phospho-Paxillin (Y118) antibody (Cat#62450). Total cell lysates (30 μ g) from various cell lines were loaded and separated by SDS-PAGE. The blot was incubated with anti-Phospho-Paxillin (Y118) antibody (Cat#62450, 1:5,000) and HRP-conjugated

SUPPORT

SUPPORT@GENUINBIOTECH.COM
TEL: +1-540-855-7041

ORDERS

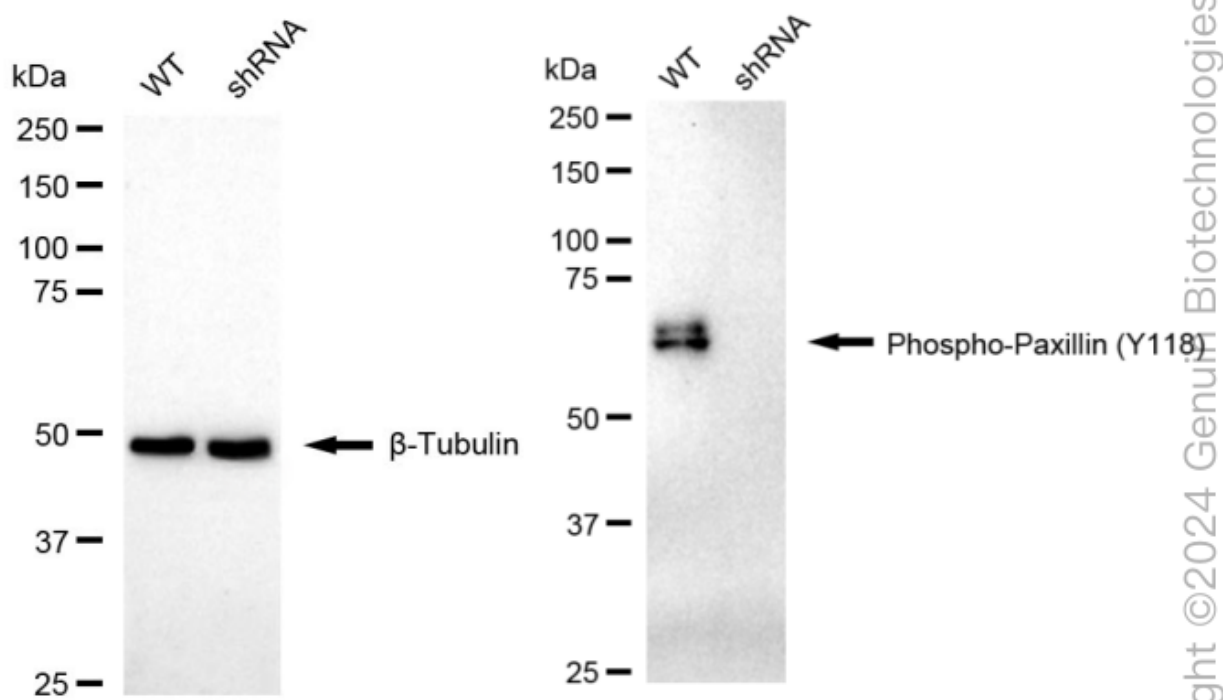
SALES@GENUINBIOTECH.COM
FAX: +1-540-855-7041

WWW.GENUINBIOTECH.COM

KD-Validated Anti-Phospho-Paxillin (Y118) Recombinant Rabbit Monoclonal Antibody

PAGE 3

goat anti-rabbit secondary antibody (Cat#201, 1:20,000) respectively. Image was developed using FeQ™ ECL Substrate Kit (Cat#226).



Western blotting analysis using anti-Phospho-Paxillin (Y118) antibody (Cat#62450). Phospho-Paxillin (Y118) expression in wild type (WT) and Phospho-Paxillin (Y118) shRNA knockdown (KD) HeLa cells with 20 μ g of total cell lysates. β -Tubulin serves as a loading control. The blot was incubated with anti-Phospho-Paxillin (Y118) antibody (Cat#62450, 1:5,000) and HRP-conjugated goat anti-rabbit secondary antibody (Cat#201, 1:20,000) respectively. Image was developed using NaQ™ ECL Substrate Kit (Cat#716).

SUPPORT

SUPPORT@GENUINBIOTECH.COM
TEL: +1-540-855-7041

ORDERS

SALES@GENUINBIOTECH.COM
FAX: +1-540-855-7041

WWW.GENUINBIOTECH.COM