

# KD-Validated Anti-Peptidylprolyl Isomerase A Recombinant Rabbit Monoclonal Antibody



**Catalog #: 62452**

## Aliases

Peptidylprolyl Isomerase A; CYPA; Peptidyl-Prolyl Cis-Trans Isomerase A; Cyclosporin A-Binding Protein; Cyclophilin A; Rotamase A; EC 5.2.1.8; PPIase A; Epididymis Secretory Sperm Binding Protein Li 69p; Peptidylprolyl Isomerase A (Cyclophilin A); T Cell Cyclophilin; HEL-S-69p; CYPH

## Background

Gene Name: PPIA

NCBI Gene Entry: [5478](#)

UniProt Entry: [P62937](#)

## Application Information

Molecular Weight: Predicted, 18 kDa, observed, 18 kDa

Clonality: Rabbit monoclonal antibody

Clone ID: 24GB905

Species Reactivity: Human, mouse

Applications Tested: Western blotting (WB), flow cytometry (FCM), immunocytochemistry (IC)

## Immunogen

A synthesized peptide derived from human Cyclophilin A

## Isotype

Rabbit IgG

## Storage Buffer

Supplied in PBS (pH 7.4) containing 50% glycerol, and 0.02% sodium azide.

## Storage

Store at -20 °C for one year.

## Recommended Dilutions

Western Blotting (WB): 1:1,000-1:5,000

Flow Cytometry (FCM): 1:2,000

Immunocytochemistry (IC): 1:100-1:1,000

---

### SUPPORT

SUPPORT@GENUINBIOTECH.COM  
TEL: +1-540-855-7041

### ORDERS

SALES@GENUINBIOTECH.COM  
FAX: +1-540-855-7041

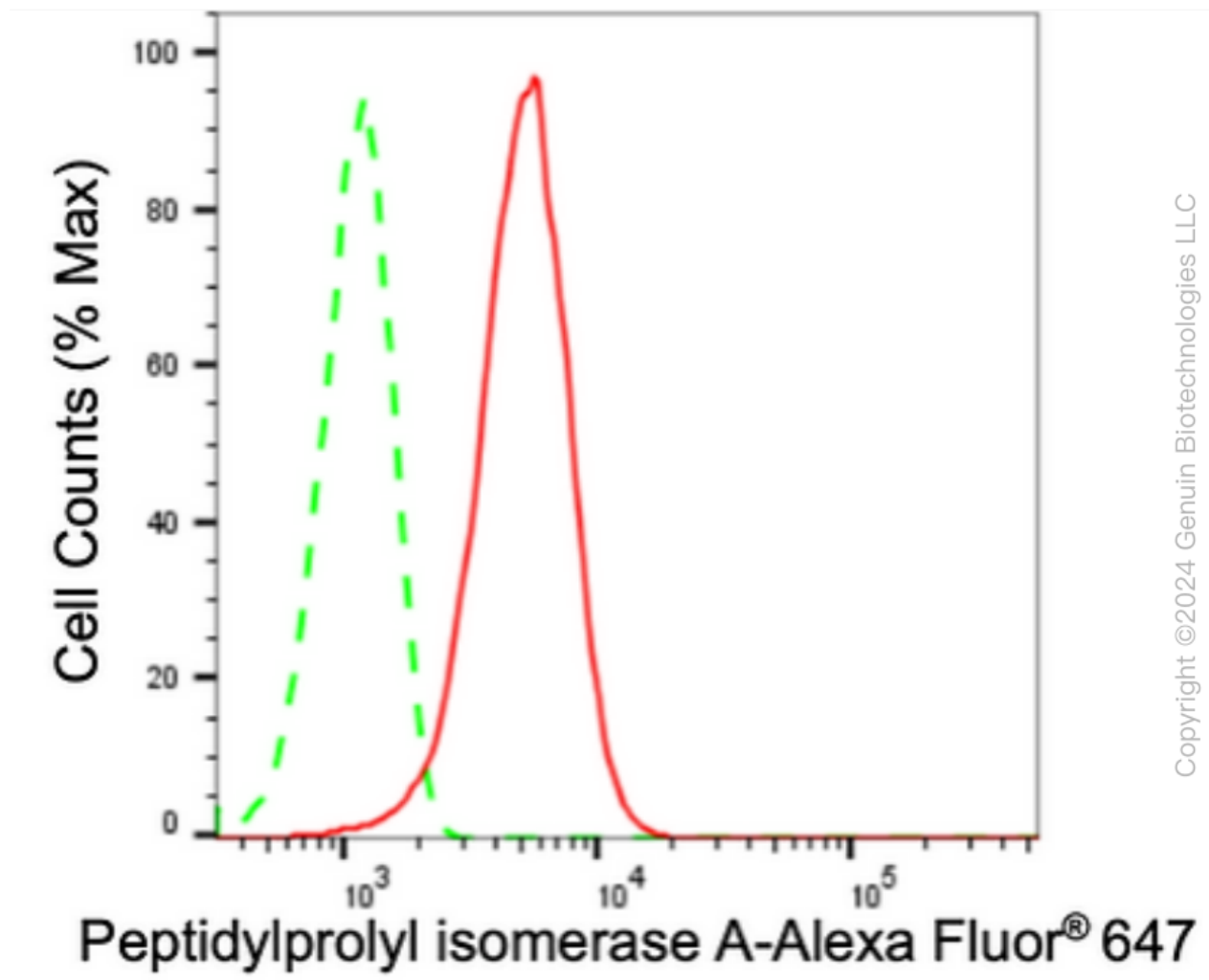
[WWW.GENUINBIOTECH.COM](http://WWW.GENUINBIOTECH.COM)

## KD-Validated Anti-Peptidylprolyl Isomerase A Recombinant Rabbit Monoclonal Antibody

PAGE 2

**Note:** This product is for research use only.

### Validation Data



Flow cytometric analysis of Peptidylprolyl isomerase A expression in HepG2 cells using anti-Peptidylprolyl isomerase A antibody (Cat#62452, 1:2,000). Green, isotype control; red, Peptidylprolyl isomerase A.

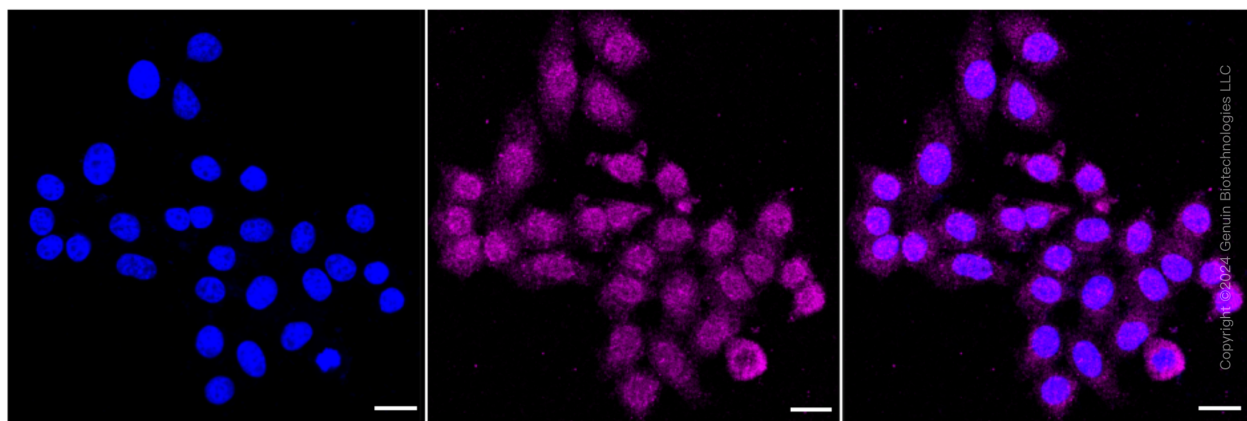
#### SUPPORT

SUPPORT@GENUINBIOTECH.COM  
TEL: +1-540-855-7041

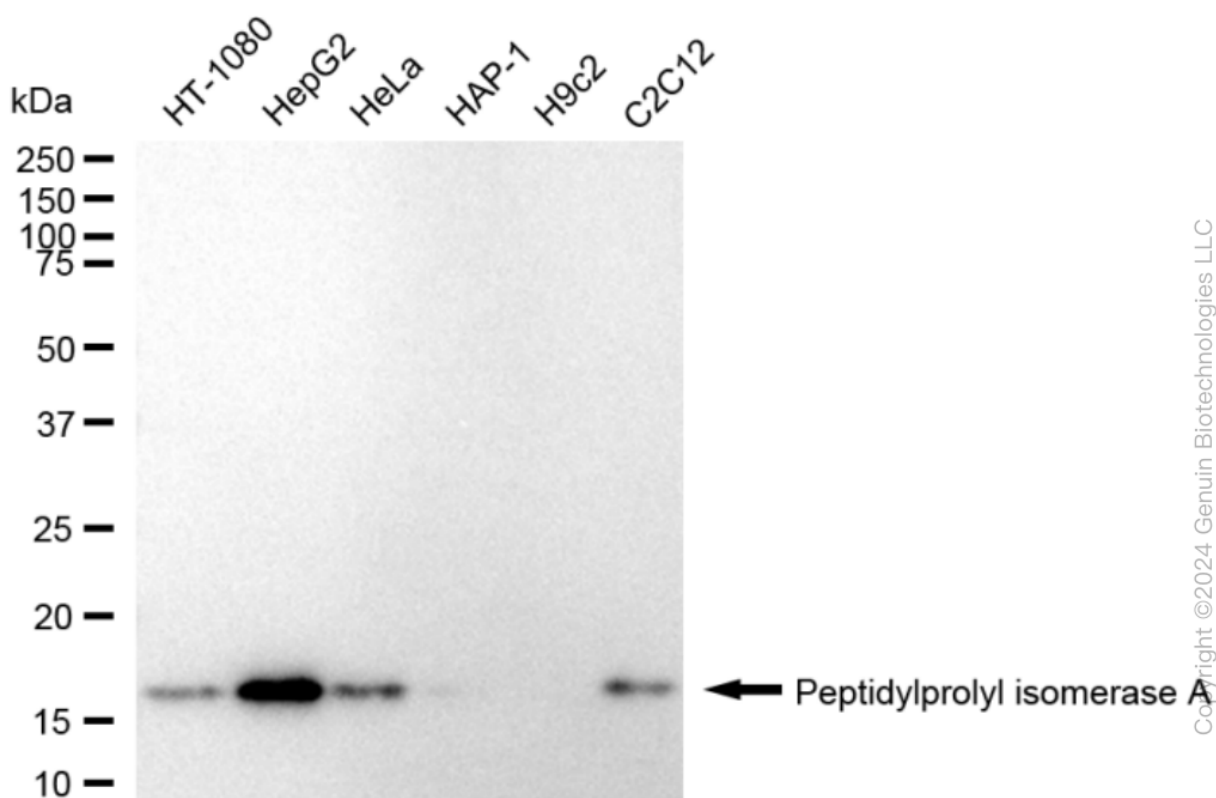
#### ORDERS

SALES@GENUINBIOTECH.COM  
FAX: +1-540-855-7041

[WWW.GENUINBIOTECH.COM](http://WWW.GENUINBIOTECH.COM)



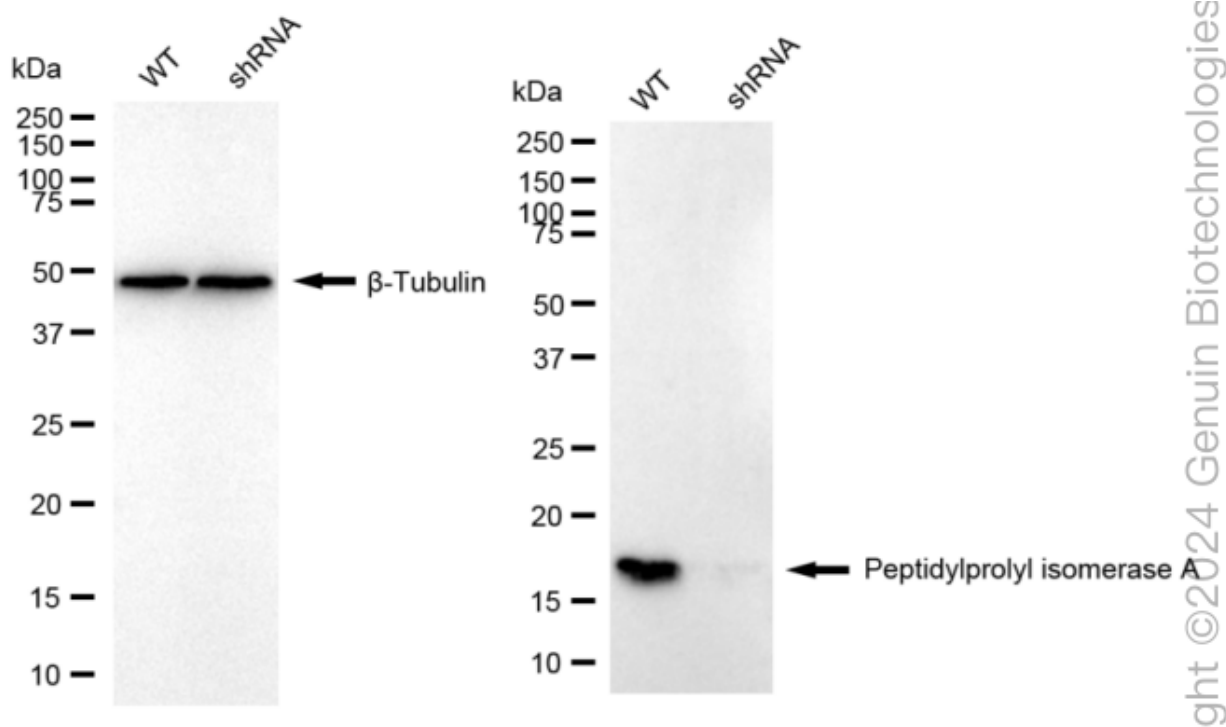
Immunocytochemical staining of HepG2 cells with anti-Peptidylprolyl isomerase A antibody (Cat#62452, 1:1,000). Nuclei were stained blue with DAPI; Peptidylprolyl isomerase A was stained magenta with Alexa Fluor® 647. Images were taken using Leica stellaris 5. Protein abundance based on laser Intensity and smart gain: Low. Scale bar: 20  $\mu$ m.



Western blotting analysis using anti-Peptidylprolyl isomerase A antibody (Cat#62452). Total cell lysates (30  $\mu$ g) from various cell lines were loaded and separated by SDS-PAGE. The blot was incubated with anti-Peptidylprolyl isomerase A antibody (Cat#62452, 1:5,000) and HRP-conjugated goat anti-rabbit secondary antibody (Cat#201, 1:20,000) respectively. Image was developed using FeQ™ ECL Substrate Kit (Cat#226).

## KD-Validated Anti-Peptidylprolyl Isomerase A Recombinant Rabbit Monoclonal Antibody

PAGE 4



Western blotting analysis using anti-peptidylprolyl isomerase A antibody (Cat#62452). Peptidylprolyl isomerase A expression in wild-type (WT) and peptidylprolyl isomerase A (PPIA) shRNA knockdown (KD) HeLa cells with 30  $\mu$ g of total cell lysates.  $\beta$ -Tubulin serves as a loading control. The blot was incubated with anti-peptidylprolyl isomerase A antibody (Cat#62452, 1:5,000) and HRP-conjugated goat anti-rabbit secondary antibody (Cat#201, 1:20,000) respectively. Image was developed using NaQ<sup>TM</sup> ECL Substrate Kit (Cat#716).

### SUPPORT

SUPPORT@GENUINBIOTECH.COM  
TEL: +1-540-855-7041

### ORDERS

SALES@GENUINBIOTECH.COM  
FAX: +1-540-855-7041

[WWW.GENUINBIOTECH.COM](http://WWW.GENUINBIOTECH.COM)