

KD-Validated Anti-Peroxiredoxin 6 Recombinant Rabbit Monoclonal Antibody



Catalog #: 62453

Aliases

Peroxiredoxin 6; AiPLA2; NSGPx; AOP2; KIAA0106; 1-Cys; PRX; P29; Acidic Calcium-Independent Phospholipase A2; Lysophosphatidylcholine Acyltransferase 5; Glutathione-Dependent Peroxiredoxin; Non-Selenium Glutathione Peroxidase; Red Blood Cells Page Spot 12; Lyso-PC Acyltransferase 5; LPC Acyltransferase 5; Antioxidant Protein 2; Liver 2D Page Spot 40; 1-Cys Peroxiredoxin; Peroxiredoxin-6; 24 KDa Protein; 1-Cys PRX; MGC46173; LPCAT-5; Epididymis Secretory Sperm Binding Protein Li 128m; EC 1.11.1.27; EC 1.11.1.15; EC 2.3.1.23; HEL-S-128m; EC 3.1.1.4

Background

Gene Name: PRDX6

NCBI Gene Entry: [9588](#)

UniProt Entry: [P30041](#)

Application Information

Molecular Weight: Predicted, 25 kDa, observed, 25 kDa

Clonality: Rabbit monoclonal antibody

Clone ID: 24GB910

Species Reactivity: Human, rat

Applications Tested: Western blotting (WB), flow cytometry (FCM), immunocytochemistry (IC)

Immunogen

A synthesized peptide derived from human PRDX6

Isotype

Rabbit IgG

Storage Buffer

Supplied in PBS (pH 7.4) containing 50% glycerol, and 0.02% sodium azide.

Storage

Store at -20 °C for one year.

Recommended Dilutions

Western Blotting (WB): 1:1,000-1:5,000

Flow Cytometry (FCM): 1:2,000

SUPPORT

SUPPORT@GENUINBIOTECH.COM
TEL: +1-540-855-7041

ORDERS

SALES@GENUINBIOTECH.COM
FAX: +1-540-855-7041

WWW.GENUINBIOTECH.COM

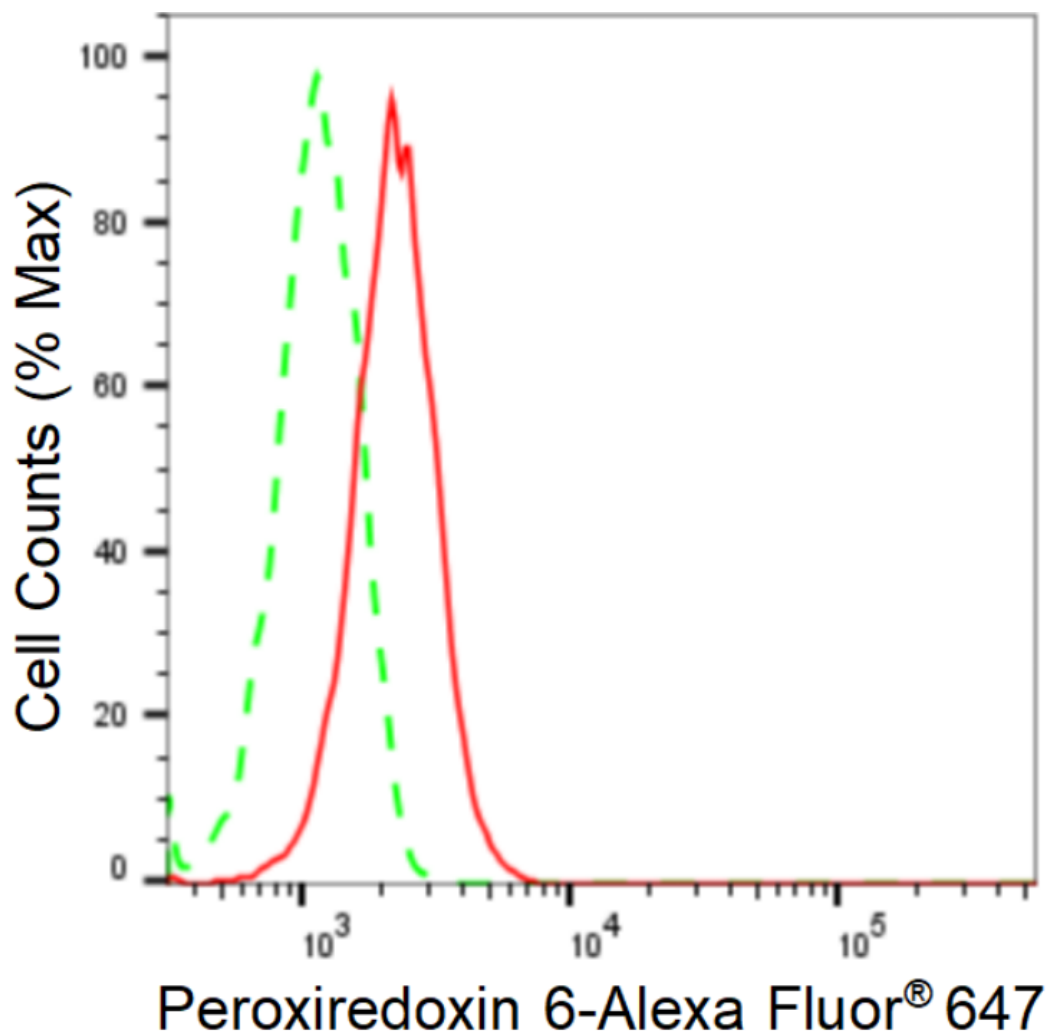
KD-Validated Anti-Peroxiredoxin 6 Recombinant Rabbit Monoclonal Antibody

PAGE 2

Immunocytochemistry (IC): 1:100-1:1,000

Note: This product is for research use only.

Validation Data



Copyright ©2024 Genuin Biotechnologies LLC

Flow cytometric analysis of Peroxiredoxin 6 expression in HepG2 cells using anti-Peroxiredoxin 6 antibody (Cat#62453, 1:2,000). Green, isotype control; red, Peroxiredoxin 6.

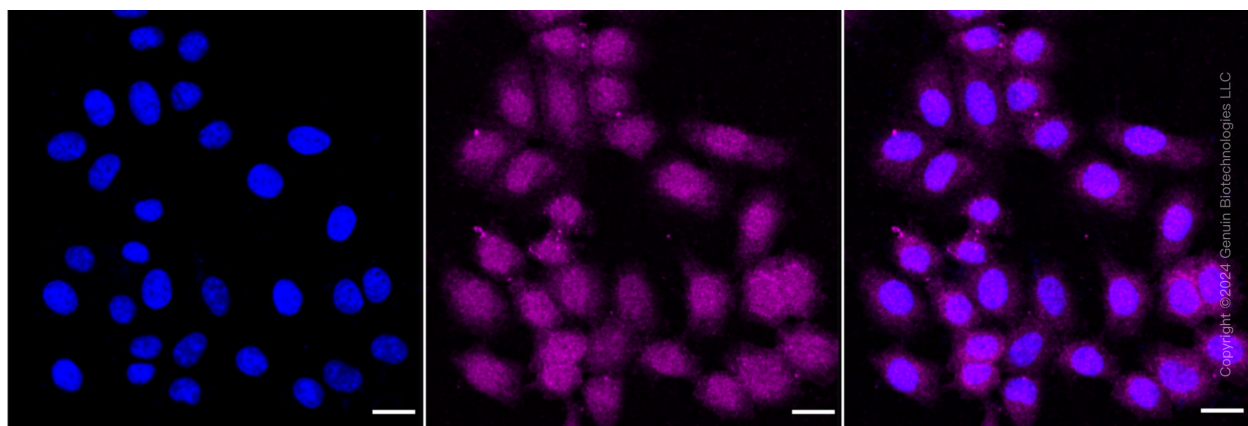
SUPPORT

SUPPORT@GENUINBIOTECH.COM
TEL: +1-540-855-7041

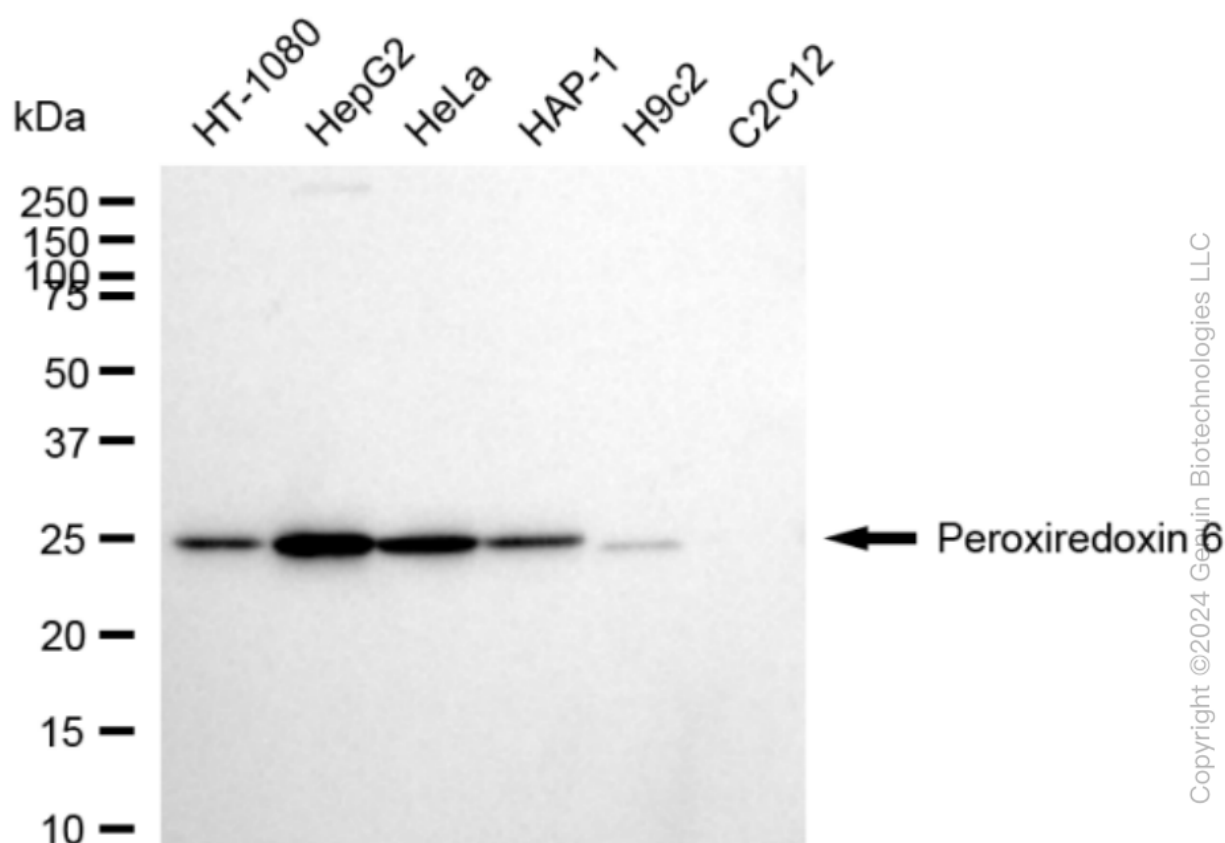
ORDERS

SALES@GENUINBIOTECH.COM
FAX: +1-540-855-7041

WWW.GENUINBIOTECH.COM



Immunocytochemical staining of HepG2 cells with anti-Peroxiredoxin 6 antibody (Cat#62453, 1:1,000). Nuclei were stained blue with DAPI; Peroxiredoxin 6 was stained magenta with Alexa Fluor® 647. Images were taken using Leica stellaris 5. Protein abundance based on laser Intensity and smart gain: Medium. Scale bar: 20 µm.

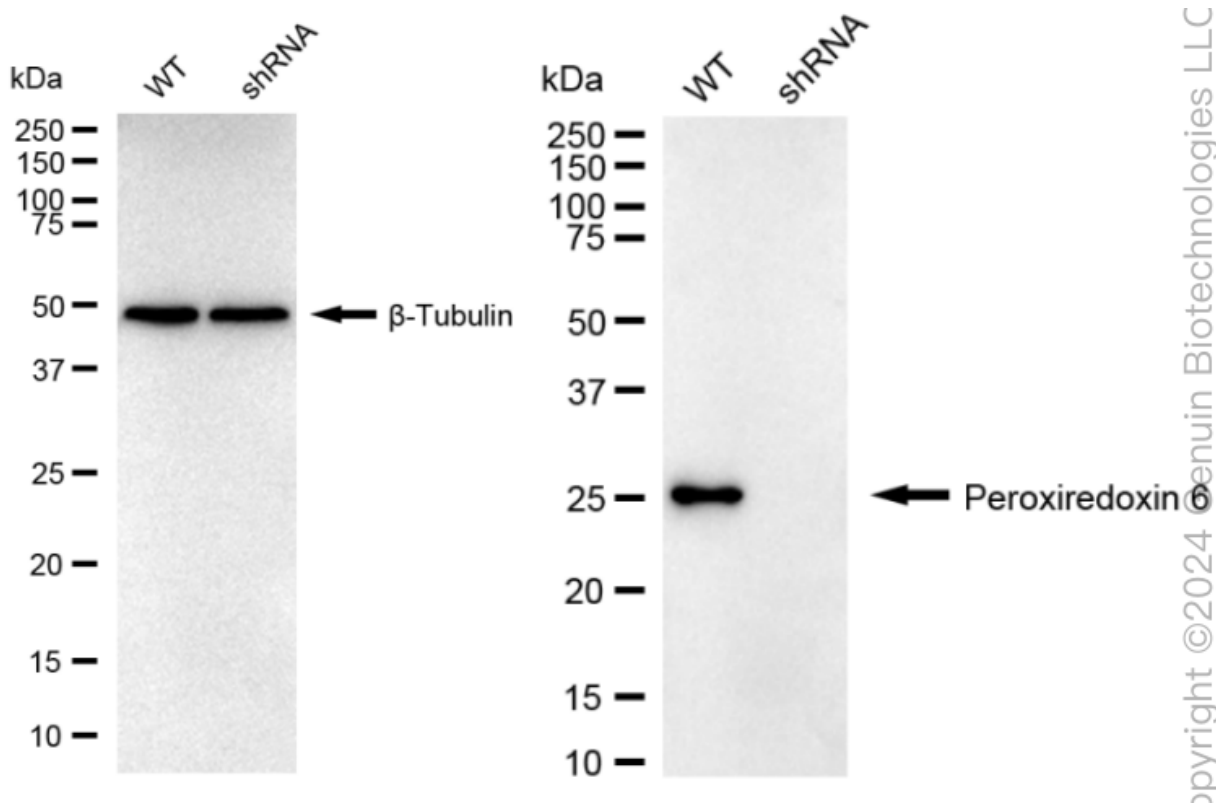


Western blotting analysis using anti-Peroxiredoxin 6 antibody (Cat#62453). Total cell lysates (30 µg) from various cell lines were loaded and separated by SDS-PAGE. The blot was incubated with anti-Peroxiredoxin 6 antibody (Cat#62453, 1:5,000) and HRP-conjugated goat anti-rabbit secondary antibody (Cat#201, 1:20,000) respectively. Image was developed using FeQ™ ECL

KD-Validated Anti-Peroxiredoxin 6 Recombinant Rabbit Monoclonal Antibody

PAGE 4

Substrate Kit (Cat#226).



Western blotting analysis using anti-Peroxiredoxin 6 antibody (Cat#62453). Peroxiredoxin 6 expression in wild type (WT) and Peroxiredoxin 6 shRNA knockdown (KD) HeLa cells with 20 μ g of total cell lysates. β -Tubulin serves as a loading control. The blot was incubated with anti-Peroxiredoxin 6 antibody (Cat#62453, 1:5,000) and HRP-conjugated goat anti-rabbit secondary antibody (Cat#201, 1:20,000) respectively. Image was developed using NaQ™ ECL Substrate Kit (Cat#716).

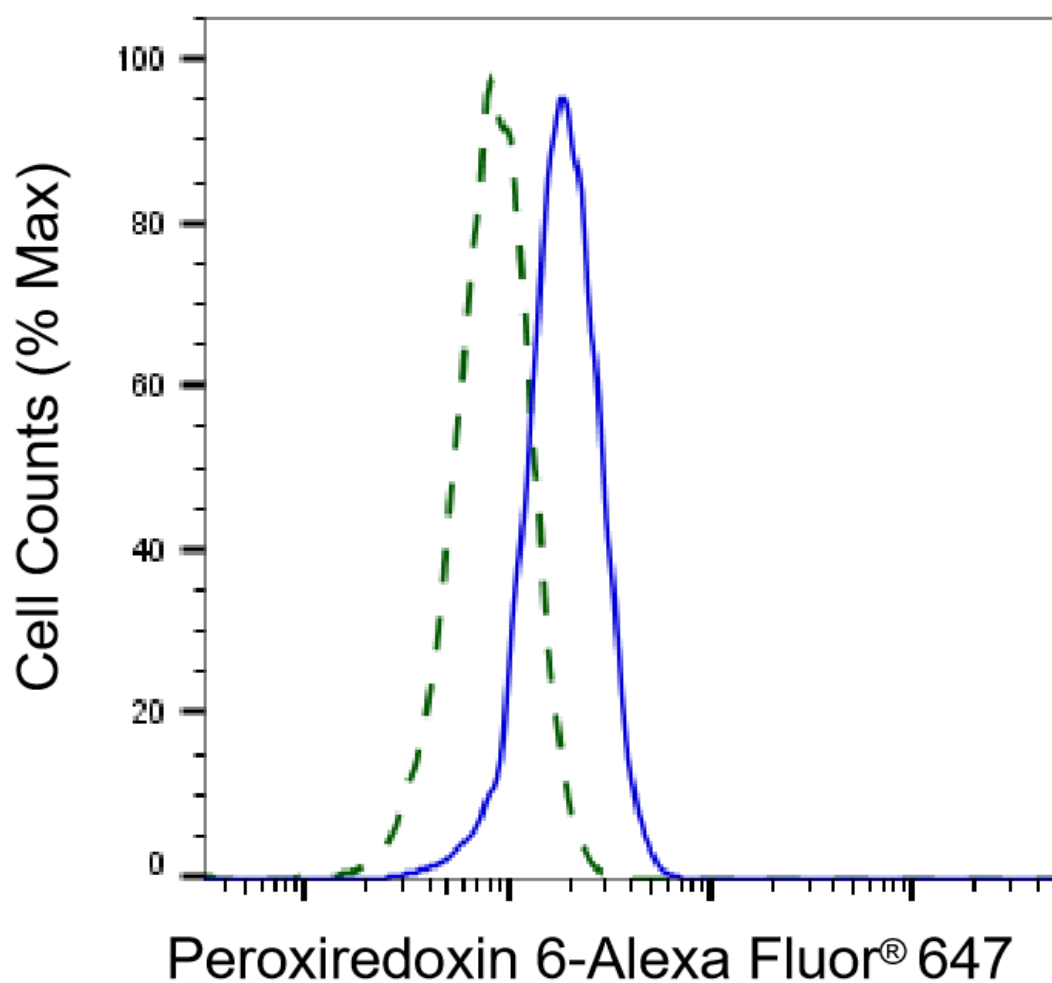
SUPPORT

SUPPORT@GENUINBIOTECH.COM
TEL: +1-540-855-7041

ORDERS

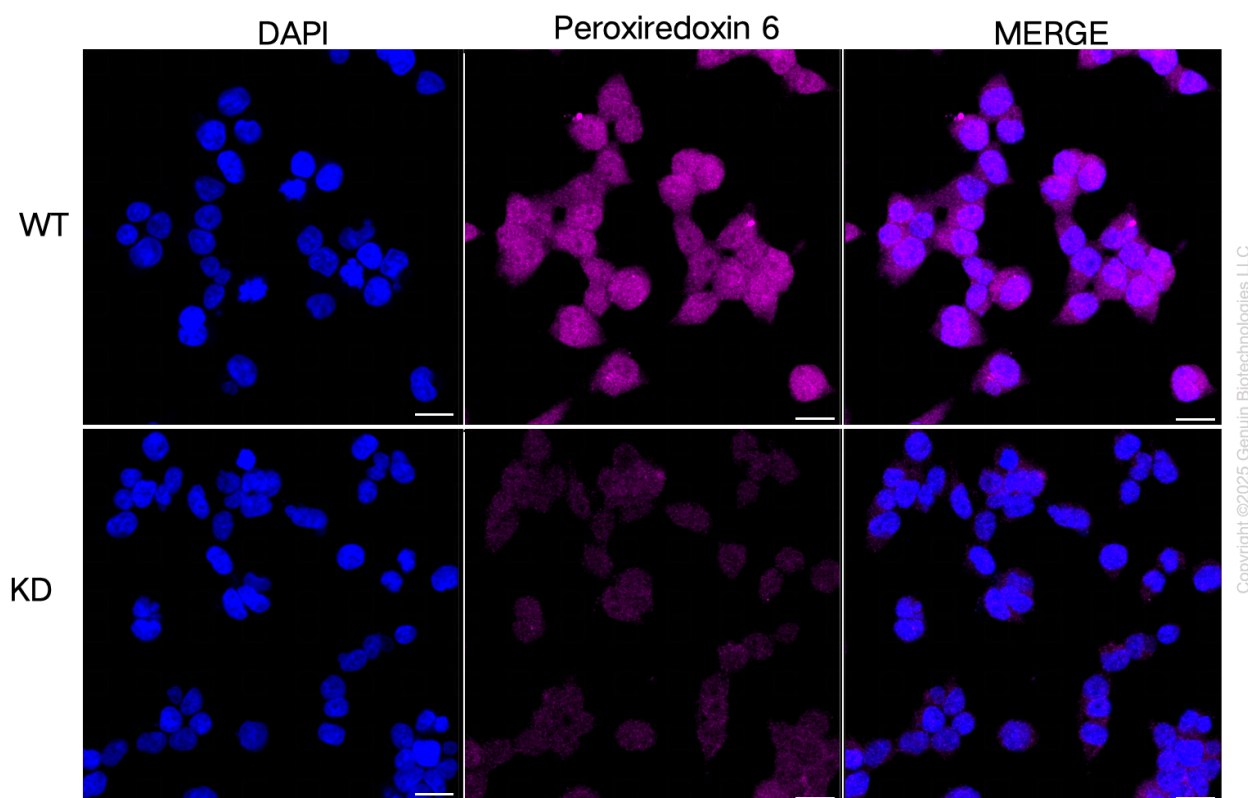
SALES@GENUINBIOTECH.COM
FAX: +1-540-855-7041

WWW.GENUINBIOTECH.COM



Copyright ©2025 Genuin Biotechnologies LLC

Validation of Peroxiredoxin 6 knockdown using flow cytometry. Wild-type(WT, Blue) and knockdown(KD, Green) HeLa cells were stained with anti-Peroxiredoxin 6 antibody (Cat#62453, 1:2,000) and analyzed using BD flow cytometer.



Immunocytochemical staining of HeLa cells using anti-Peroxiredoxin 6 antibody (Cat#62453, 1:1,000), Top panel: wild-type (WT); Bottom panel: Peroxiredoxin 6 shRNA knockdown (KD). Nuclei were stained blue with DAPI; Peroxiredoxin 6 was stained magenta with Alexa Fluor® 647. Scale bar, 20 μ m.