

# KD-Validated Anti-Pre-mRNA Processing Factor 4 Recombinant Rabbit Monoclonal



**Catalog #: 62466**

## Aliases

Pre-mRNA Processing Factor 4; PRP4; U4/U6 Small Nuclear Ribonucleoprotein Prp4; SNRNP60; HPRP4P; Prp4p; HPRP4; PRP4/STK/WD Splicing Factor; U4/U6 SnRNP 60 KDa Protein; WD Splicing Factor Prp4; PRP4 Homolog; PRP4 Pre-mRNA Processing Factor 4 Homolog (Yeast); PRP4 Pre-mRNA Processing Factor 4 Homolog; HPrp4; RP70

## Background

Gene Name: PRPF4

NCBI Gene Entry: [9128](#)

UniProt Entry: [O43172](#)

## Application Information

Molecular Weight: Predicted, 58 kDa, observed, 58 kDa

Clonality: Rabbit monoclonal antibody

Clone ID: 24GB975

Species Reactivity: Human, mouse, rat

Applications Tested: Western blotting (WB), flow cytometry (FCM), immunocytochemistry (IC)

## Immunogen

A synthesized peptide derived from human PRPF4

## Isotype

Rabbit IgG

## Storage Buffer

Supplied in PBS (pH 7.4) containing 50% glycerol, and 0.02% sodium azide.

## Storage

Store at -20 °C for one year.

## Recommended Dilutions

Western Blotting (WB): 1:1,000-1:5,000

Flow Cytometry (FCM): 1:2,000

Immunocytochemistry (IC): 1:100-1:1,000

---

### SUPPORT

SUPPORT@GENUINBIOTECH.COM  
TEL: +1-540-855-7041

### ORDERS

SALES@GENUINBIOTECH.COM  
FAX: +1-540-855-7041

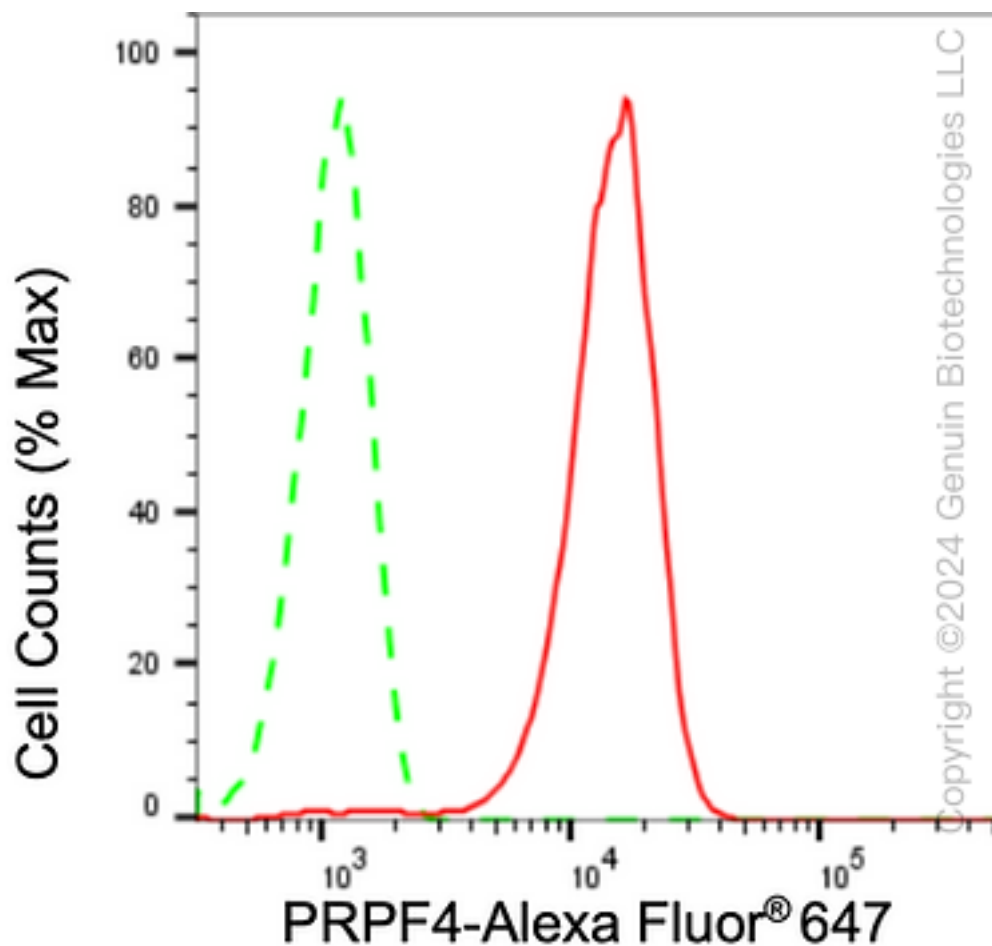
[WWW.GENUINBIOTECH.COM](http://WWW.GENUINBIOTECH.COM)

# KD-Validated Anti-Pre-MRNA Processing Factor 4 Recombinant Rabbit Monoclonal

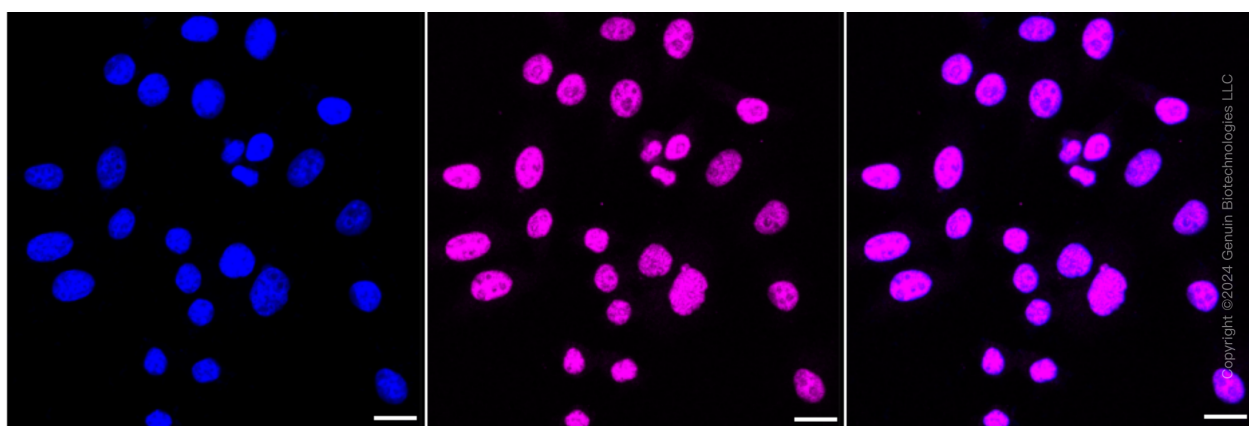
PAGE 2

**Note:** This product is for research use only.

## Validation Data



Flow cytometric analysis of PRPF4 expression in HepG2 cells using anti-PRPF4 antibody (Cat#62466, 1:2,000). Green, isotype control; red, PRPF4.



Immunocytochemical staining of HepG2 cells with anti-PRPF4 antibody (Cat#62466, 1:1,000). Nuclei were stained blue with DAPI; PRPF4 was stained magenta with Alexa Fluor® 647. Images

### SUPPORT

SUPPORT@GENUINBIOTECH.COM  
TEL: +1-540-855-7041

### ORDERS

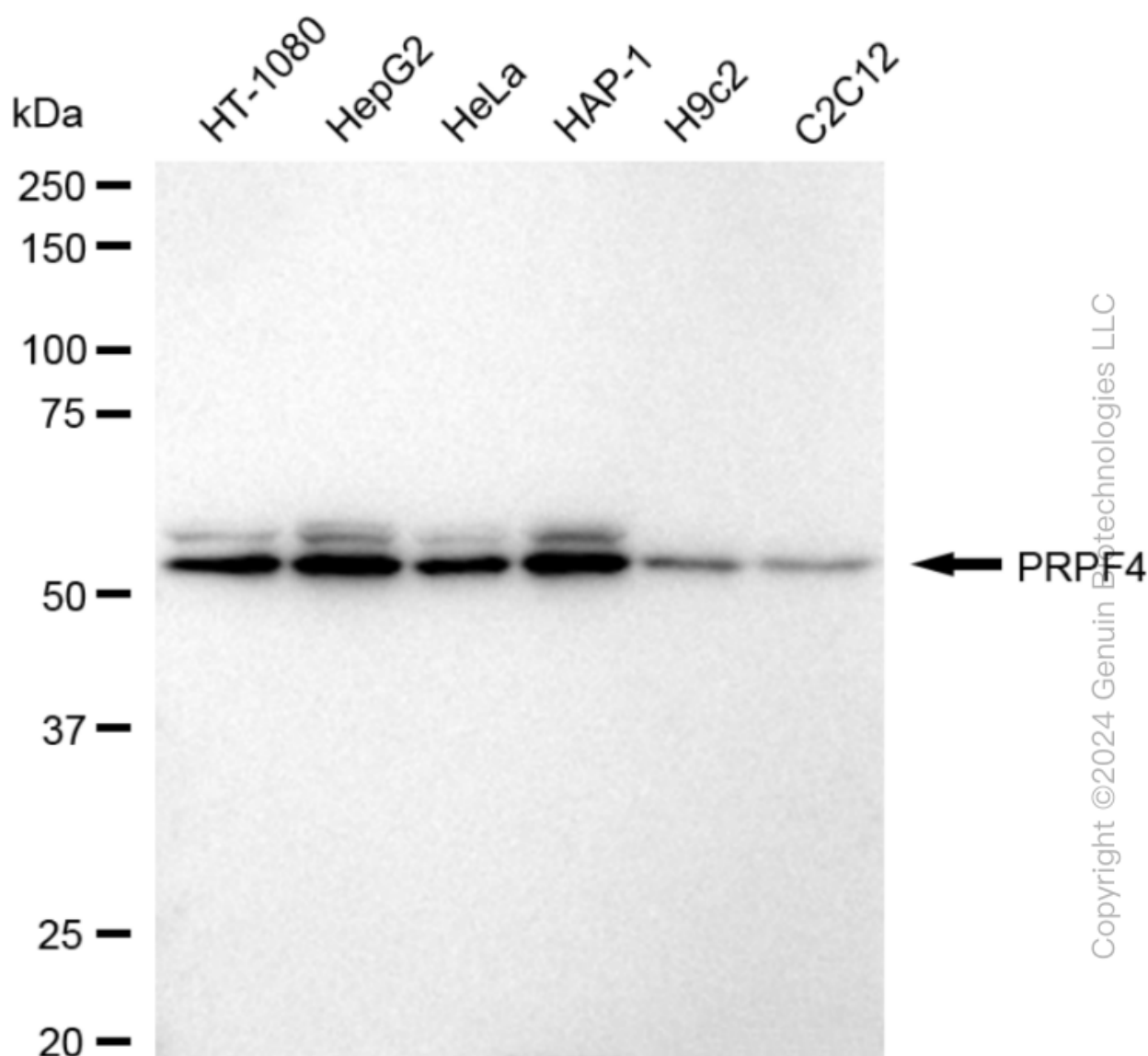
SALES@GENUINBIOTECH.COM  
FAX: +1-540-855-7041

[WWW.GENUINBIOTECH.COM](http://WWW.GENUINBIOTECH.COM)

## KD-Validated Anti-Pre-mRNA Processing Factor 4 Recombinant Rabbit Monoclonal

PAGE 3

were taken using Leica stellaris 5. Protein abundance based on laser Intensity and smart gain: High. Scale bar: 20  $\mu$ m.



Western blotting analysis using anti-PRPF4 antibody (Cat#62466). Total cell lysates (30  $\mu$ g) from various cell lines were loaded and separated by SDS-PAGE. The blot was incubated with anti-PRPF4 antibody (Cat#62466, 1:5,000) and HRP-conjugated goat anti-rabbit secondary antibody (Cat#201, 1:20,000) respectively. Image was developed using FeQ™ ECL Substrate Kit (Cat#226).

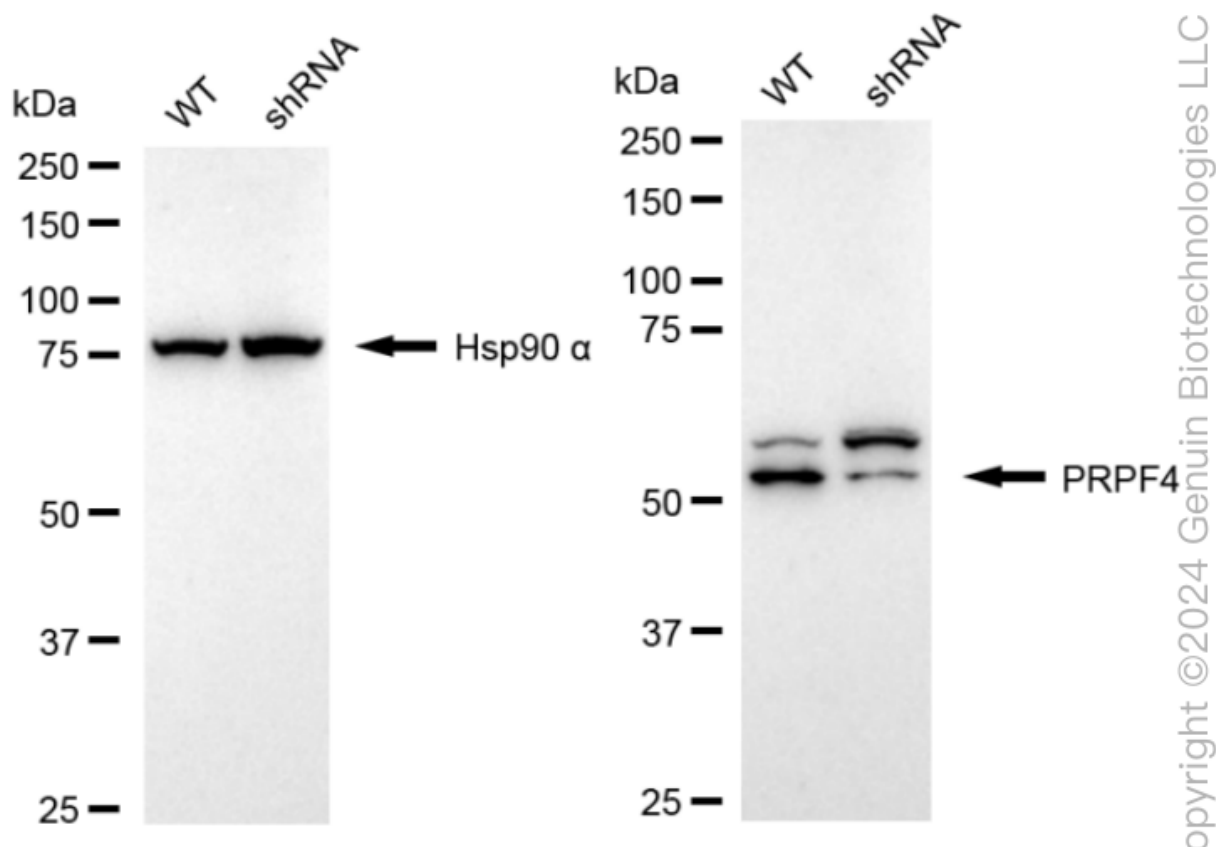
### SUPPORT

SUPPORT@GENUINBIOTECH.COM  
TEL: +1-540-855-7041

### ORDERS

SALES@GENUINBIOTECH.COM  
FAX: +1-540-855-7041

[WWW.GENUINBIOTECH.COM](http://WWW.GENUINBIOTECH.COM)



Western blotting analysis using anti-PRPF4 antibody (Cat#62466). PRPF4 expression in wild type (WT) and PRPF4 shRNA knockdown (KD) HeLa cells with 20 µg of total cell lysates. Hsp90 α serves as a loading control. The blot was incubated with anti-PRPF4 antibody (Cat#62466, 1:5,000) and HRP-conjugated goat anti-rabbit secondary antibody (Cat#201, 1:20,000) respectively. Image was developed using NaQ™ ECL Substrate Kit (Cat#716).